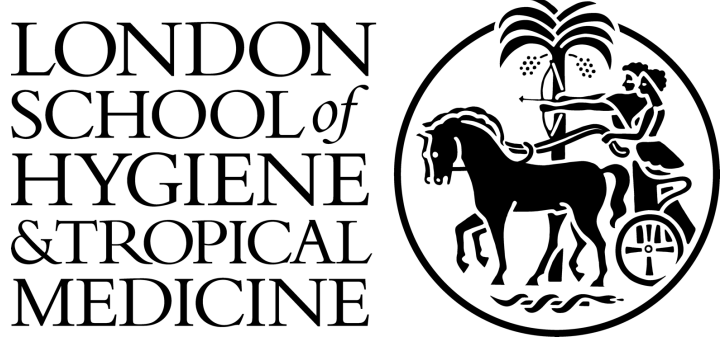
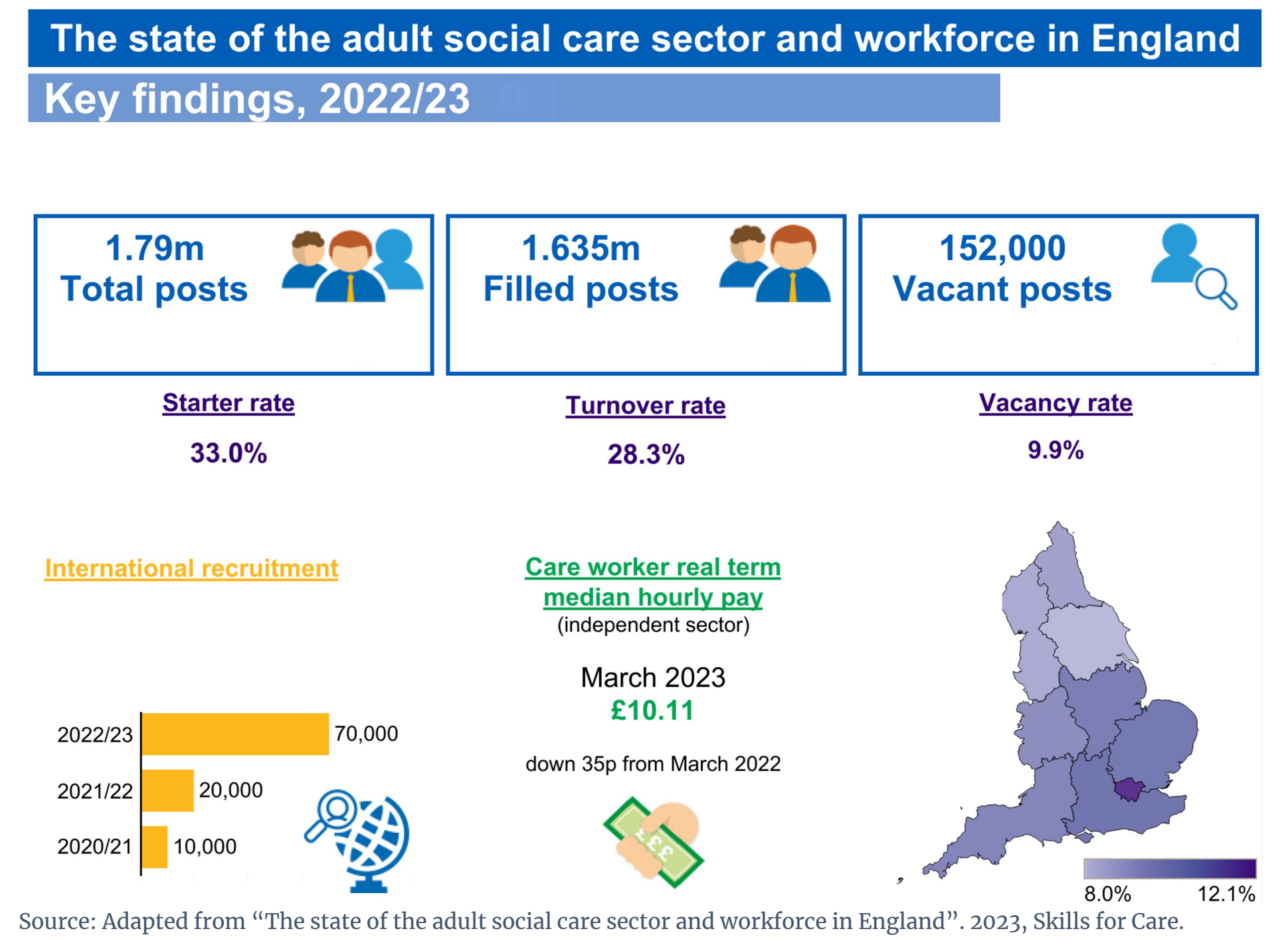


Examining England's 2023 Social Care Workforce Reforms: Insights and Challenges Ahead

Meherunissa Hamid, Mirza Lalani, Richard Grieve, David Lugo Palacios, Nicholas Mays, Shereen Hussein
Department of Health Services Research and Policy, London School of Hygiene & Tropical Medicine



Context



Source: Adapted from “The state of the adult social care sector and workforce in England”. 2023, Skills for Care.

Purpose of the Study

In 2023, the UK government proposed Adult Social Care Workforce reforms in England to address recruitment and retention issues, focusing on workforce training and upskilling ^{1,2}.

New Care Certificate	Digital Skills Passport	Care Workforce Pathway
Delegation of Principles	Upskilling and Training Initiatives	

This study examines the purpose of the recent Adult Social Care reforms and the prospective challenges associated with their implementation to develop an evaluation programme.

Methods

Scoping Evidence Review

- Workforce Training
- Long-Term Adult Care
- UK and Countries with similar Social Care Structures

Key Informant Interviews

- National policy makers
- NGO representatives

Scoping Review: UK & International Learning

Policies can be driven by unanticipated change
Significance of the evolving nature of the context
Care markets are not free markets
Care policies cannot be isolated from broader policies and other mega trends
Balance between local and central decision-making powers
Need for structural support
Training and career development cannot be isolated from the working conditions and pay across the sector
Inequalities and diversity produce differentiated impacts

References

1. Department of Health and Social Care (2021) People at the Heart of Care: adult social care reform white paper.
2. Department of Health and Social Care (2023). Adult social care system reform: next steps to put People at the Heart of Care.
3. The state of the adult social care sector and workforce in England. 2023, Skills for Care.

Key Informant Interviews: Challenges & Implications

Devolved care policies vary across nations, but UK-wide policies, limit change
Social care reforms intersect with other policy reforms
Care workers have limited policy influence

Recommendations

1. Comprehensive strategy involving all stakeholders.
2. Long term research to track the effects of policy adaptations.
3. Equitable access to training and development.
4. Workforce development initiatives must be tailored to the unique features of the social care sector.

Acknowledgements

This study is funded by the National Institute for Health Research (NIHR) [Developmental Phase for A Mixed-Methods Evaluation of Adult Social Care Workforce Reforms (NIHR206541)]. The views expressed are those of the authors and are not necessarily those of the NIHR or the Department of Health and Social Care.

FUNDED BY

NIHR | National Institute for Health and Care Research