

# Elevated Fecal Mitochondrial DNA from Symptomatic Norovirus Infections Suggests Potential Health Relevance of Human Mitochondrial DNA in Fecal Source Tracking

Kevin J. Zhu, Brittany Suttner, Jackie Knee, Drew Capone, Christine L. Moe, Christine E. Stauber, Kostas T. Konstantinidis, Thomas E. Wallach, Amy J. Pickering, and Joe Brown\*



Cite This: *Environ. Sci. Technol. Lett.* 2022, 9, 543–550



Read Online

ACCESS |



Metrics & More



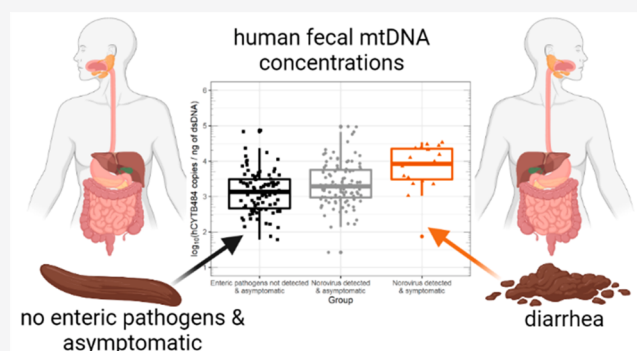
Article Recommendations



Supporting Information

**ABSTRACT:** An end goal of fecal source tracking (FST) is to provide information on risk of transmission of waterborne illnesses associated with fecal contamination. Ideally, concentrations of FST markers in ambient waters would reflect exposure risk. Human mtDNA is an FST marker that is exclusively human in origin and may be elevated in feces of individuals experiencing gastrointestinal inflammation. In this study, we examined whether human mtDNA is elevated in fecal samples from individuals with symptomatic norovirus infections using samples from the United States (US), Mozambique, and Bangladesh. We quantified hCYTB484 (human mtDNA) and HF183/BacR287 (human-associated *Bacteroides*) FST markers using droplet digital polymerase chain reaction. We observed the greatest difference in concentrations of hCYTB484 when comparing samples from individuals with symptomatic norovirus infections versus individuals without norovirus infections or diarrhea symptoms:  $\log_{10}$  increase of 1.42 in US samples (3,820% increase,  $p$ -value = 0.062), 0.49 in Mozambique (308% increase,  $p$ -value = 0.061), and 0.86 in Bangladesh (648% increase,  $p$ -value = 0.035). We did not observe any trends in concentrations of HF183/BacR287 in the same samples. These results suggest concentrations of fecal mtDNA may increase during symptomatic norovirus infection and that mtDNA in environmental samples may represent an unambiguously human source-tracking marker that correlates with enteric pathogen exposure risk.

**KEYWORDS:** fecal source tracking, human mtDNA, enteric infection, diarrhea, biomarker of gastrointestinal inflammation



## INTRODUCTION

Fecal source tracking (FST) aims to detect fecal contamination in environmental samples and identify the source using a variety of chemical and biological methods. Method validation studies to date have demonstrated FST markers targeting human-associated microbial DNA to have variable sensitivity (true positive rate) and specificity (true negative rate) across geographies.<sup>1–5</sup> Human mitochondrial DNA (mtDNA) markers, having been demonstrated to have high sensitivity<sup>6–9</sup> and high specificity<sup>6–9</sup> across varying geographies, may complement the use of microbial FST targets, especially in settings or environmental matrices where other FST markers have not been previously validated.<sup>9</sup>

In addition to retaining high sensitivity and specificity, an ideal FST marker would also convey information about the risk associated with detected fecal contamination; increasing concentration of FST markers in environmental samples should indicate increasing risk of gastrointestinal and other waterborne illnesses associated with exposure.<sup>10</sup> This increasing risk may be due to an increase in fecal input generally

increasing chances of pathogens being present or due to a fecal source present with particularly high concentrations of infectious pathogens. However, such a marker has not yet been identified. mtDNA FST markers differ from microbial markers because they target host DNA instead of host-associated microbial DNA. The main cellular sources of fecal mtDNA are thought to be intestinal epithelial cells (IEC)<sup>6,7</sup> and white blood cells (leukocytes).<sup>6,11</sup> IECs constitute the intestinal epithelium that prevents the entry of harmful substances into the body while selectively allowing entry of beneficial nutrients. Leukocytes transmigrate into the intestinal lumen during enteric infections. Because of these origins, fecal mtDNA concentrations may exhibit baseline levels during

Received: February 25, 2022

Revised: May 10, 2022

Accepted: May 11, 2022

Published: May 18, 2022



Table 1. Sample Frame for This Study

Study population	Individuals from which samples were collected	Ages of individuals	enteric <sup>-</sup> asymptomatic	noro <sup>+</sup> asymptomatic	noro <sup>+</sup> symptomatic
US <sup>a</sup>	11	Adult (18–50 years of age)	11	6	5
Mozambique	66	Children (<4 years of age)	26	29	11
Bangladesh	120	Children (<5 years of age)	49	68	3

<sup>a</sup>All US samples were part of paired samples (pre-challenge and post-challenge) from 11 individuals. Six individuals did not develop symptoms; five individuals did develop symptoms.

homeostasis (e.g., IEC shedding to balance IEC proliferation) with elevated levels during inflammatory events (e.g., infection triggering leukocyte transmigration, increased apoptosis, IEC extrusion and shedding).<sup>12,13</sup>

A key assumption often used when assessing risk associated with fecal indicators is that concentrations of fecal indicators covary with concentrations of sewage present and, therefore, concentrations of pathogens. If concentrations of mtDNA FST markers increase during cases of enteric infections, specifically in symptomatic cases where vomiting and/or diarrhea facilitates the shedding of pathogens, mtDNA markers may advance the capabilities of FST markers by providing risk information beyond the assumed covariance between concentrations of indicator and pathogen. Associations between mtDNA FST markers and enteric infections have not yet been studied, and it is unknown whether concentrations of fecal mtDNA are indicative of symptomatic enteric infections.

The aim of this study was to investigate whether concentrations of a human mtDNA FST marker are higher in feces from individuals with symptomatic norovirus infections than feces from individuals without. We used archived fecal samples from participants in studies conducted in the US, Mozambique, and Bangladesh and compared fecal mtDNA concentrations across three groups: (1) no detected enteric infection and no diarrhea, (2) norovirus infection and no diarrhea, and (3) norovirus infection and diarrhea. We hypothesized that concentrations of fecal mtDNA will be higher in feces from symptomatic norovirus infections versus those from individuals with asymptomatic norovirus infections or no enteric infections.

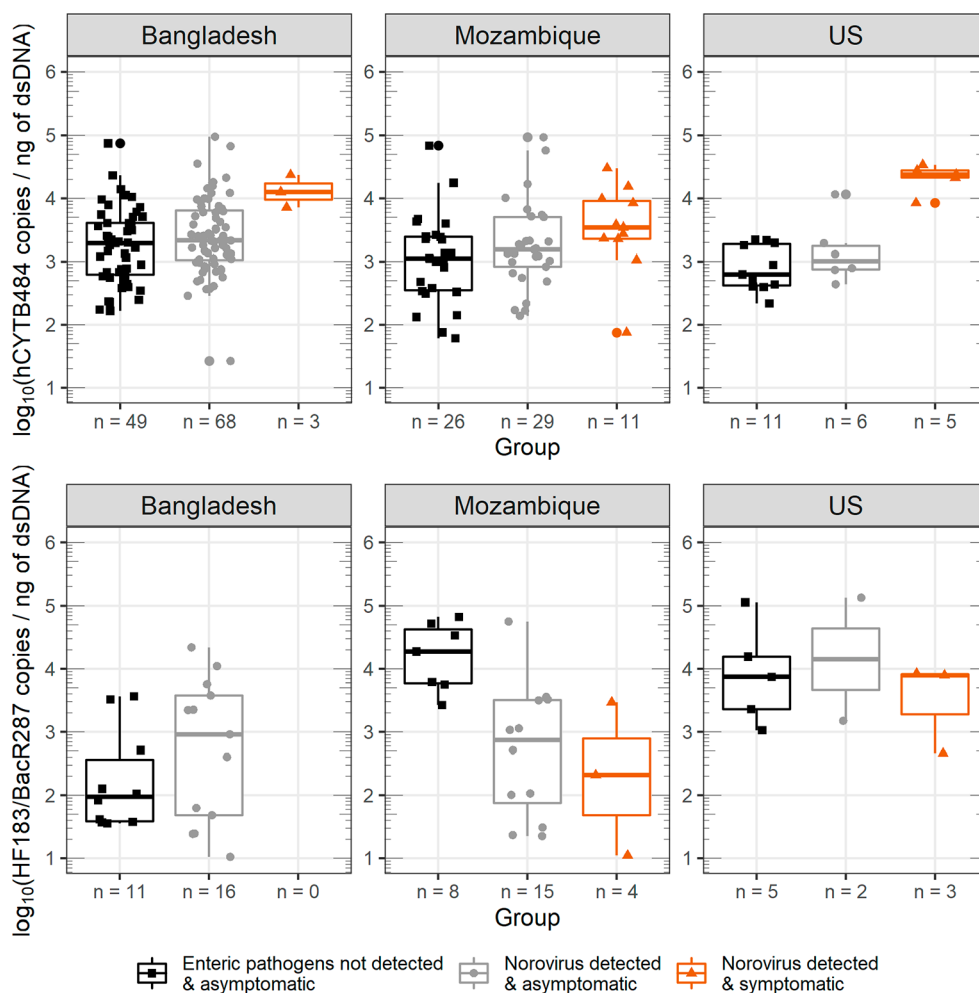
## MATERIALS AND METHODS

**Feces Samples.** We obtained human fecal samples from three different studies conducted in the US, Mozambique, and Bangladesh. We first investigated the US samples, using pairs of one pre-challenge and one post-challenge sample per subject from a norovirus Genogroup I (GI) challenge study in which norovirus-spiked oysters were used as the intentional exposure.<sup>14</sup> These pre-challenge and post-challenge pairs were from six subjects who developed asymptomatic norovirus infections and five subjects who developed symptomatic norovirus infections (Table 1). In the challenge study, symptoms (chills, cramping, diarrhea, fatigue, fever, headache, myalgia, nausea, vomiting, white blood cell shift) were recorded during the challenge period and follow-up visits.<sup>14</sup> To be classified as symptomatic, a subject had to have at least one of the above symptoms, with fever requiring at least one other associated symptom.

Following initial results from the US samples (Figure S1), we expanded the analysis to include archived fecal samples from two other studies: (1) a cross-sectional study of child (under four years of age) enteric infections in urban Maputo, Mozambique<sup>15,16</sup> and (2) an experimental trial evaluating the

effect of passive chlorination devices at shared water points on child (under five years of age) diarrhea prevalence in urban Bangladesh.<sup>17,18</sup> We classified the fecal samples using the following criteria: (1) no enteric pathogens detected and from individuals with no reported diarrhea (hereafter referred to as enteric<sup>-</sup>asymptomatic), (2) norovirus GI/GII detected and from individuals with no reported diarrhea (noro<sup>+</sup>asymptomatic), and (3) norovirus GI/GII detected and from individuals with reported diarrhea (noro<sup>+</sup>symptomatic). Detection of enteric pathogens in the archived Mozambique and Bangladesh samples was determined by the Luminex (Austin, Texas, US) xTAG Gastrointestinal Pathogen Panel RUO (GPP) in previous studies.<sup>15,18</sup> The GPP detects the nucleic acid markers of 15 bacterial, viral, and parasitic enteric pathogens, including norovirus GI/GII with a limit of detection for norovirus GI/GII on the order of 10<sup>6</sup> genome copies/gram of feces.<sup>19</sup> There were low numbers of norovirus-positive feces in the Mozambique and Bangladesh samples, and feces positive for norovirus were often positive for another GPP target.<sup>15,18</sup> Because of this, we included norovirus-positive feces that were positive for additional pathogen(s) in the noro<sup>+</sup>asymptomatic and noro<sup>+</sup>symptomatic groups. We identified enteric<sup>-</sup>asymptomatic samples by selecting feces that were negative for all Luminex GPP targets. Reported diarrhea in the Bangladesh and Mozambique studies was based on caregiver-reported diarrhea criteria of greater than or equal to three loose or watery feces in a 24-h period with a one-week recall period. Because the Bangladesh<sup>17</sup> and Mozambique<sup>15</sup> studies observed low prevalence of caregiver-reported diarrhea, we were limited in the number of noro<sup>+</sup>symptomatic samples we could examine (Table 1).

**DNA Extraction and ddPCR.** Prior to DNA extraction, we stored fecal samples at −80 °C. For US samples, we performed DNA extractions using 0.1 g of fecal sample and the MO BIO PowerSoil kit (Carlsbad, CA, USA) following manufacturer's instructions. For Mozambique and Bangladesh samples, we performed DNA extractions using 0.1 g of fecal sample and the Qiagen QIAamp 96 PowerFecal QIAcube HT Kit automated on the Qiagen QIAcube HT platform (Hilden, Germany) following manufacturer's instructions, using soil grinding SK38 bead tubes (Bertin Corp., Rockville, MD, USA) containing 650 μL of prewarmed Buffer PW1 and homogenizing the bead tubes on a vortexer for 10 min. Following DNA extraction, we stored all extracts at −80 °C until analysis. We quantified hCYTB484<sup>9</sup> and HF183/BacR287<sup>20</sup> markers through droplet digital polymerase chain reaction (ddPCR) on Bio-Rad QX200 Droplet Digital PCR (Hercules, CA, USA) using methods developed previously<sup>9</sup> and normalized marker concentrations to nanograms of double stranded DNA (ng dsDNA) as measured by Qubit 3.0 Fluorometer with Qubit High Sensitivity DNA kits (ThermoFisher Scientific, Waltham, MA, USA) to account for differences in moisture content between feces and any potential differential recovery between



**Figure 1.** Box and whisker plots of hCYTB484 (top plot) and HF183/BacR287 (bottom plot) concentrations for the various health statuses in this study. Horizontal lines (box) denote the 25th, 50th, and 75th percentiles, and the end of the vertical lines (whiskers) denote the maximum or minimum value of the data that is within 1.5 times the interquartile range over the 75th percentile or under the 25th percentile. All concentrations are plotted as  $\log_{10}$  (concentration +1), and concentrations from feces are normalized to concentration of dsDNA (ng of dsDNA determined by Qubit). The number of quantifiable samples is shown at the x-axis tick mark of each box and whisker (n = #). HF183/BacR287 plots have different numbers of quantifiable samples because HF183/BacR287 was detected in only 52% of all samples and quantifiable in 31% of all samples.

**Table 2. Comparison of  $\log_{10}$  Human mtDNA Copies Normalized to ng of dsDNA among Different Health Status Groups**

Sample set	Kruskal–Wallis test	enteric <sup>-</sup> asymptomatic versus noro <sup>+</sup> asymptomatic			noro <sup>+</sup> asymptomatic versus noro <sup>+</sup> symptomatic			enteric <sup>-</sup> asymptomatic versus noro <sup>+</sup> asymptomatic		
	p-value	$\log_{10}$ increase in mean hCYTB484 copies/ng dsDNA	p-value	effect size <sup>d</sup>	$\log_{10}$ increase in mean hCYTB484 copies/ng dsDNA	p-value	effect size <sup>d</sup>	$\log_{10}$ increase in mean hCYTB484 copies/ng dsDNA	p-value	effect size <sup>d</sup>
US	N/A	0.25 (168%)	1 <sup>c</sup>	0.60	N/A	N/A	N/A	1.42 (3,820%)	0.062 <sup>c</sup>	4.3
Mozambique	0.068	0.22 (138%)	0.36 <sup>b</sup>	0.32	0.27 (223%)	0.15 <sup>b</sup>	0.39	0.49 (308%)	0.061 <sup>b</sup>	0.70
Bangladesh	0.024	0.16 (111%)	0.14 <sup>b</sup>	0.27	0.70 (585%)	0.057 <sup>b</sup>	1.2	0.86 (648%)	0.035 <sup>ba</sup>	1.5

<sup>a</sup>Statistically significant result at the  $\alpha = 0.05$  level. <sup>b</sup>Dunn test adjusted with the Benjamini–Hochberg method for multiple comparisons. <sup>c</sup>Wilcoxon signed rank paired test for paired pre-challenge and post-challenge samples for each individual. <sup>d</sup>Effect size reported as the difference between the two sample means divided by the pooled standard deviation of the  $\log_{10}$  transformed data (Cohen’s *d*). The larger the effect size is, the larger the difference between the mean of the two sample distributions is.

kits.<sup>21</sup> Results of biological replicates for a subset of samples are in the Supporting Information (Table S1). Minimum information for publication of quantitative digital PCR

experiments<sup>22</sup> is included in the Supporting Information (Table S2). For both assays, we classified samples as not detected if amplification was below our analytical limit of

detection of three positive partitions per ddPCR well.<sup>9</sup> For the analytical lower limit of quantification, we used previously established assay-specific limits.<sup>9</sup>

**Data Analysis.** Because the US samples were collected pre-challenge and post-challenge from each subject, we applied the Wilcoxon signed rank paired test. For the Mozambique and Bangladesh sample sets (cross-sectional data), we used the Kruskal–Wallis test, followed with the Dunn test with Benjamini–Hochberg adjustment. We calculated effect sizes for  $\log_{10}$  transformed concentrations through a difference in means approach using Cohen's *d*, the difference between the two means divided by the pooled standard deviation. To compare the relative influences of potential confounders, we fitted a generalized linear model (GLM) using a Gaussian identity function to the Mozambique and Bangladesh sample sets using reported diarrhea and norovirus GI/GII detected/not detected (as determined by the GPP) as the independent variables and  $\log_{10}$  values of hCYTB484 normalized to ng of dsDNA as the dependent variable while adjusting for number of pathogens detected (as determined by the GPP), sex, age (continuous, number of months), and study population (Mozambique or Bangladesh). More information on model fitting can be found in the [Supporting Information](#). We performed data analyses in R version 4.0.1.

## RESULTS AND DISCUSSION

We detected hCYTB484 above quantifiable levels in 100% of the samples in this study and found increases in hCYTB484 in samples from symptomatic norovirus infections. We observed the largest differences in median hCYTB484 copies/ng dsDNA between the enteric<sup>-</sup>asymptomatic and noro<sup>+</sup>symptomatic groups ([Figure 1](#), [Table 2](#)): a  $\log_{10}$  increase of 1.42 for US samples (3,820% increase, *p*-value of 0.062, effect size = 4.3), 0.49 increase for Mozambique samples (308% increase, *p*-value of 0.061, effect size = 0.70), and 0.86 increase for Bangladesh samples (648% increase, *p*-value of 0.035, statistically significant at  $\alpha = 0.05$  level, effect size = 1.5). The larger effect sizes between enteric<sup>-</sup>asymptomatic and noro<sup>+</sup>symptomatic versus enteric<sup>-</sup>asymptomatic and noro<sup>+</sup>asymptomatic across all three countries ([Table 2](#)) suggest that fecal mtDNA concentrations are higher in symptomatic norovirus infections than in asymptomatic norovirus infections (effect sizes calculated as the difference between means normalized to the pooled standard deviation). To investigate what variables influenced fecal mtDNA concentrations, we standardized the GLM regression coefficients to account for different units of measurements and variances of each variable. The standardized GLM regression coefficients ([Table S3](#)) show reported diarrhea (0.16, 95% CI: 0–0.32, *p*-value = 0.045), norovirus detected (0.12, 95% CI: –0.16–0.39, *p*-value = 0.38), age in months (–0.12, 95% CI: –0.28–0.03, *p*-value = 0.12), and study population (Bangladesh or Mozambique) (0.19, 95% CI: –0.36 – –0.03, *p*-value = 0.018) as having the largest magnitudes. However, only reported diarrhea and study population had *p*-values less than 0.05 (0.045 and 0.018, respectively). Comparison of the standardized regression coefficients after adjusting for other potential biological confounders suggest that, of the variables tested, diarrhea and study population had the largest influences on fecal mtDNA concentrations.

The largest increase in concentrations of fecal mtDNA occurred in the US samples, for several possible reasons. First, epithelial cell proliferation declines with age.<sup>23</sup> Compared to

the adults in the US study, the children in the Mozambique and Bangladesh studies may have had higher levels of proliferation even when not experiencing diarrhea. Second, fecal mtDNA concentrations may have varied due to environmental enteric dysfunction (EED).<sup>24</sup> The Mozambique and Bangladesh study settings had high prevalence of enteric pathogen exposure<sup>15,18</sup> as measured by frequency of pathogen detection in feces:<sup>25</sup> estimated 86% and 88% of feces containing one or more pathogens in Mozambique and Bangladesh samples, respectively. EED, a condition caused by persistent exposure to enteric pathogens, infections, or perturbations and characterized by deleterious changes in the intestinal epithelium, can result in malabsorption and diminished growth and development in children. Despite deleterious changes associated with EED that may potentially change fecal mtDNA concentrations, such as reduced intestinal villi, EED typically presents with few or no acute symptoms, potentially reducing in the effect size we observed in samples from Mozambique and Bangladesh. Lastly, the method of reporting diarrhea differed between the US versus Mozambique and Bangladesh samples: clinical monitoring versus caregiver reported. Caregiver-reported diarrhea is subject to recall biases,<sup>26,27</sup> which may have resulted in misclassification of samples.

We did not observe any increases in HF183/BacR287 marker copies/ng dsDNA between the enteric<sup>-</sup>asymptomatic and noro<sup>+</sup>symptomatic groups ([Figure 1](#)), indicating that the elevated mtDNA concentrations may be specific to mtDNA and not due to a bulk increase in fecal markers. Furthermore, we detected the HF183/BacR287 marker in 52% of samples, with only 31% of samples above the analytical lower limit of quantification (quantifiable), a finding consistent with assessments of HF183 in individual human feces across the globe.<sup>5,28</sup> In contrast, we quantified hCYTB484 in 100% of samples in this study. HF183/BacR287 was quantifiable in less than a third of the samples and did not exhibit any consistent pattern between the enteric<sup>-</sup>asymptomatic and noro<sup>+</sup>symptomatic groups, suggesting that HF183/BacR287 is not widely quantifiable across individual humans nor are levels of HF183/BacR287 concentration indicative of changes in intestinal inflammatory status. For these reasons, these results suggest HF183/BacR287 would be less useful as a biomarker of intestinal inflammation.

A variety of sources and processes related to the health of the gastrointestinal system influence fecal mtDNA concentrations. Because the integrity of the intestinal epithelium is essential to the host's health, IECs proliferate and are removed in a highly active and regulated cycle.<sup>29</sup> IEC removal likely depends on the epithelium and host's health, including various potential mechanisms: engulfment following apoptosis,<sup>30,31</sup> shedding into the intestinal lumen,<sup>32–35</sup> shedding in response to pathogen or pathogen-associated insults,<sup>36–38</sup> and shedding during other pathological states such as inflammatory bowel disease, neoplastic growth,<sup>39</sup> and wound healing.<sup>34</sup> Additionally, current evidence of norovirus infection in humans points toward enterocytes in the small intestines as the primary tropism.<sup>40,41</sup> Noroviruses, as nonenveloped viruses, are presumed to have lytic effects on their host cells,<sup>42</sup> potentially releasing host mtDNA into the intestinal lumen. Leukocytes can be found in feces from individuals with inflammatory diarrhea,<sup>40,43,44</sup> and neutrophils are highly abundant first responders, transmigrating across the intestinal epithelium during enteric infections.<sup>45</sup> Lastly, there is emerging evidence

of mtDNA's immune-signaling role in inflammatory diseases: pathogen-associated signal<sup>46</sup> and damage-associated molecular pattern.<sup>13,47</sup> Many of these processes through which mtDNA is shed in feces are involved with gastrointestinal health, lending plausibility to our observation of increased fecal mtDNA during symptomatic norovirus infections. However, non-pathogenic diseases such as inflammatory bowel disease and neoplastic growth may also cause elevated fecal mtDNA.

Several limitations qualify our results. Prevalences of reported diarrhea in the Bangladesh<sup>17</sup> and Mozambique<sup>15</sup> trials were low, limiting the number of samples in our analysis and constraining statistical power (see [supporting information](#) for 95% confidence intervals between groups). Reported diarrhea in these studies was assessed through a caregiver survey and is subject to observational and recall biases.<sup>26,27</sup> Multiple pathogens were commonly detected in the Bangladesh and Mozambique fecal samples, with norovirus rarely detected alone. Coinfections may have affected fecal mtDNA concentrations as well as symptomology; norovirus may not have always been the cause of symptoms. While norovirus is an important cause of gastroenteritis globally, there are other enteric pathogens that can be transmitted through exposure to fecal contamination in the environment and are relevant to FST.

A human-specific FST marker that is informative of risk of illness is needed because fecal indicator bacteria exhibit nonspecificity in the environment (cross-reactivity and re-growth) and because human fecal contamination represents an important risk to human health.<sup>48–52</sup> In this study, we observed increased concentrations of mtDNA in feces from individuals with symptomatic norovirus infections when compared to feces from individuals without norovirus infections or diarrhea symptoms. This suggests that mtDNA markers may serve as biomarkers of intestinal inflammation and may provide risk-relevant information by increasing in concentration when an individual is at higher risk of transmitting norovirus infection.<sup>53</sup> However, more work needs to be done to understand current limitations of human mtDNA in FST.<sup>9</sup> We need better understanding of the cellular sources of fecal mtDNA, intactness of fecal mtDNA after defecation, and what conditions modulate fecal mtDNA concentrations. Approaches investigating processes relevant to gastrointestinal health (e.g., expression of IEC proliferation genes) could also help identify relevant mechanisms that modulate fecal mtDNA. Studies on the fate and persistence of fecal mtDNA<sup>8,55</sup> are needed to understand how the signal is attenuated in environments relative to that of infectious pathogens.<sup>56,57</sup> Before human mtDNA, a nucleic acid marker, can serve as a risk-relevant FST marker, we need to understand its relationship with infectious pathogens.<sup>54</sup> Because human mtDNA FST markers are typically found at lower concentrations in sewage than those of other human-associated FST markers, improved concentration and recovery methods of mtDNA are needed.<sup>10,58–61</sup> Better understanding of potential nonfecal sources of mtDNA and at what concentrations nonfecal sources shed mtDNA are also needed.<sup>62</sup> Potential carry over from consumption of meat or feces of other species should also be investigated.<sup>6,9</sup> Despite these knowledge and technical gaps, results from this study add to previous evidence supporting the utility of human mtDNA as FST markers.

## ■ ASSOCIATED CONTENT

### Supporting Information

The Supporting Information is available free of charge at <https://pubs.acs.org/doi/10.1021/acs.estlett.2c00140>.

Comparison of pre-challenge versus post-challenge samples for the US study, a comparison between biological replicates for both hCYTB484 and HF183/BacR287 for 15 fecal samples, a table detailing the minimum information for publication of quantitative digital PCR experiments for the ddPCR materials and methods used in this study, details on the generalized linear model (GLM) fit in this study including assessment of fit, and coefficients for the GLM (PDF)

Data used in this study as well as a summary sheet with calculations of 95% confidence intervals for the different groups (XLSX)

## ■ AUTHOR INFORMATION

### Corresponding Author

**Joe Brown** – Department of Environmental Sciences and Engineering, Gillings School of Global Public Health, University of North Carolina at Chapel Hill, Chapel Hill, North Carolina 27599, United States; [orcid.org/0000-0002-5200-4148](https://orcid.org/0000-0002-5200-4148); Email: [joebrown@unc.edu](mailto:joebrown@unc.edu)

### Authors

**Kevin J. Zhu** – School of Civil and Environmental Engineering, Georgia Institute of Technology, Atlanta, Georgia 30332, United States; [orcid.org/0000-0002-4625-2276](https://orcid.org/0000-0002-4625-2276)

**Brittany Suttner** – School of Civil and Environmental Engineering, Georgia Institute of Technology, Atlanta, Georgia 30332, United States; [orcid.org/0000-0001-9004-4354](https://orcid.org/0000-0001-9004-4354)

**Jackie Knee** – Department of Disease Control, London School of Hygiene and Tropical Medicine, London WC1E 7HT, United Kingdom; [orcid.org/0000-0002-0834-8488](https://orcid.org/0000-0002-0834-8488)

**Drew Capone** – Department of Environmental Sciences and Engineering, Gillings School of Global Public Health, University of North Carolina at Chapel Hill, Chapel Hill, North Carolina 27599, United States; [orcid.org/0000-0002-2138-6382](https://orcid.org/0000-0002-2138-6382)

**Christine L. Moe** – Center for Global Safe Water, Sanitation, and Hygiene, Rollins School of Public Health, Emory University, Atlanta, Georgia 30322, United States; [orcid.org/0000-0003-3628-1783](https://orcid.org/0000-0003-3628-1783)

**Christine E. Stauber** – Department of Population Health Sciences, School of Public Health, Georgia State University, Atlanta, Georgia 30302, United States; [orcid.org/0000-0002-2226-0976](https://orcid.org/0000-0002-2226-0976)

**Kostas T. Konstantinidis** – School of Civil and Environmental Engineering, Georgia Institute of Technology, Atlanta, Georgia 30332, United States; [orcid.org/0000-0002-0954-4755](https://orcid.org/0000-0002-0954-4755)

**Thomas E. Wallach** – Division of Pediatric Gastroenterology, SUNY Downstate Health Sciences University, Brooklyn, New York 11203, United States

**Amy J. Pickering** – Department of Civil and Environmental Engineering, University of California, Berkeley, California 94720, United States; [orcid.org/0000-0001-6193-2221](https://orcid.org/0000-0001-6193-2221)

Complete contact information is available at: <https://pubs.acs.org/10.1021/acs.estlett.2c00140>

## Notes

Associated content: Zhu, K. J., Suttner, B., Knee, J., Capone, D., Moe, C. L., Stauber, C. E., Konstantinidis, K. T., Wallach, T. E., Pickering, A. J., Brown, J. Elevated fecal mitochondrial DNA from symptomatic norovirus infections suggests potential health relevance of human mitochondrial DNA in fecal source tracking. medRxiv Preprint, 2022. <https://doi.org/10.1101/2022.02.24.22271477> (accessed May 10, 2022).

The authors declare no competing financial interest.

## ACKNOWLEDGMENTS

This material is based upon work supported by the National Science Foundation under Grant No. 1511825 and the United States Geological Survey under Project ID 2018GA388B. We received further support from the Bill and Melinda Gates Foundation Grant OPP1137224 and the World Bank Strategic Impact Evaluation Fund (SIEF). The funders had no role in study design, data collection and analysis, decision to publish, or preparation of the manuscript. We acknowledge contributions by Janet Hatt, Minjae Kim, Angela Peña-Gonzalez, Trent Sumner, Sid Patel, and Victoria Dean.

## REFERENCES

- (1) Boehm, A. B.; Van De Werfhorst, L. C.; Griffith, J. F.; Holden, P. A.; Jay, J. A.; Shanks, O. C.; Wang, D.; Weisberg, S. B. Performance of Forty-One Microbial Source Tracking Methods: A Twenty-Seven Lab Evaluation Study. *Water Res.* **2013**, *47* (18), 6812–6828.
- (2) Harris, A. R.; Pickering, A. J.; Harris, M.; Doza, S.; Islam, M. S.; Unicom, L.; Luby, S.; Davis, J.; Boehm, A. B. Ruminants Contribute Fecal Contamination to the Urban Household Environment in Dhaka, Bangladesh. *Environ. Sci. Technol.* **2016**, *50* (9), 4642–4649.
- (3) Nshimiyimana, J. P.; Cruz, M. C.; Thompson, R. J.; Wuertz, S. Bacteroidales Markers for Microbial Source Tracking in Southeast Asia. *Water Res.* **2017**, *118*, 239–248.
- (4) Odagiri, M.; Schriewer, A.; Hanley, K.; Wuertz, S.; Misra, P. R.; Panigrahi, P.; Jenkins, M. W. Validation of Bacteroidales Quantitative PCR Assays Targeting Human and Animal Fecal Contamination in the Public and Domestic Domains in India. *Science of The Total Environment* **2015**, *502*, 462–470.
- (5) Reischer, G. H.; Ebdon, J. E.; Bauer, J. M.; Schuster, N.; Ahmed, W.; Åström, J.; Blanch, A. R.; Blöschl, G.; Byamukama, D.; Coakley, T.; Ferguson, C.; Goshu, G.; Ko, G.; de Roda Husman, A. M.; Mushi, D.; Poma, R.; Pradhan, B.; Rajal, V.; Schade, M. A.; Sommer, R.; Taylor, H.; Toth, E. M.; Vrajmasu, V.; Wuertz, S.; Mach, R. L.; Farnleitner, A. H. Performance Characteristics of QPCR Assays Targeting Human- and Ruminant-Associated Bacteroidetes for Microbial Source Tracking across Sixteen Countries on Six Continents. *Environ. Sci. Technol.* **2013**, *47* (15), 8548–8556.
- (6) Caldwell, J. M.; Raley, M. E.; Levine, J. F. Mitochondrial Multiplex Real-Time PCR as a Source Tracking Method in Fecal-Contaminated Effluents. *Environ. Sci. Technol.* **2007**, *41* (9), 3277–3283.
- (7) Schill, W. B.; Mathes, M. V. Real-Time PCR Detection and Quantification of Nine Potential Sources of Fecal Contamination by Analysis of Mitochondrial Cytochrome b Targets. *Environ. Sci. Technol.* **2008**, *42* (14), S229–S234.
- (8) He, X.; Liu, P.; Zheng, G.; Chen, H.; Shi, W.; Cui, Y.; Ren, H.; Zhang, X.-X. Evaluation of Five Microbial and Four Mitochondrial DNA Markers for Tracking Human and Pig Fecal Pollution in Freshwater. *Sci. Rep.* **2016**, *6* (1), 35311.
- (9) Zhu, K.; Suttner, B.; Pickering, A.; Konstantinidis, K. T.; Brown, J. A Novel Droplet Digital PCR Human MtDNA Assay for Fecal Source Tracking. *Water Res.* **2020**, *183*, 116085.
- (10) *Microbial Source Tracking: Methods, Applications, and Case Studies*; Hagedorn, C.; Blanch, A. R.; Harwood, V. J., Eds.; Springer: New York, 2011. DOI: 10.1007/978-1-4419-9386-1.
- (11) Martellini, A.; Payment, P.; Villemur, R. Use of Eukaryotic Mitochondrial DNA to Differentiate Human, Bovine, Porcine and Ovine Sources in Fecally Contaminated Surface Water. *Water Res.* **2005**, *39* (4), 541–548.
- (12) Peña-Gonzalez, A.; Soto-Girón, M. J.; Smith, S.; Sistrunk, J.; Montero, L.; Páez, M.; Ortega, E.; Hatt, J. K.; Cevallos, W.; Trueba, G.; Levy, K.; Konstantinidis, K. T. Metagenomic Signatures of Gut Infections Caused by Different Escherichia Coli Pathotypes. *Appl. Environ. Microbiol.* **2019**, *85* (24), 1–18.
- (13) Boyapati, R. K.; Dorward, D. A.; Tamborska, A.; Kalla, R.; Ventham, N. T.; Doherty, M. K.; Whitfield, P. D.; Gray, M.; Loane, J.; Rossi, A. G.; Satsangi, J.; Ho, G. Mitochondrial DNA Is a Pro-Inflammatory Damage-Associated Molecular Pattern Released During Active IBD. *Inflammatory Bowel Diseases* **2018**, *24* (10), 2113–2122.
- (14) Leon, J. S.; Kingsley, D. H.; Montes, J. S.; Richards, G. P.; Lyon, G. M.; Abdulhafid, G. M.; Seitz, S. R.; Fernandez, M. L.; Teunis, P. F.; Flick, G. J.; Moe, C. L. Randomized, Double-Blinded Clinical Trial for Human Norovirus Inactivation in Oysters by High Hydrostatic Pressure Processing. *Appl. Environ. Microbiol.* **2011**, *77* (15), 5476–5482.
- (15) Knee, J.; Sumner, T.; Adriano, Z.; Berendes, D.; de Bruijn, E.; Schmidt, W. P.; Nalá, R.; Cumming, O.; Brown, J. Risk Factors for Childhood Enteric Infection in Urban Maputo, Mozambique: A Cross-Sectional Study. *PLoS Neglected Tropical Diseases* **2018**, *12* (11), e0006956.
- (16) Brown, J.; Cumming, O.; Bartram, J.; Cairncross, S.; Ensink, J.; Holcomb, D.; Knee, J.; Kolsky, P.; Liang, K.; Liang, S.; Nala, R.; Norman, G.; Rheingans, R.; Stewart, J.; Zavale, O.; Zuin, V.; Schmidt, W.-P. A Controlled, before-and-after Trial of an Urban Sanitation Intervention to Reduce Enteric Infections in Children: Research Protocol for the Maputo Sanitation (MapSan) Study, Mozambique. *BMJ Open* **2015**, *5* (6), e008215–e008215.
- (17) Pickering, A. J.; Crider, Y.; Sultana, S.; Swarthout, J.; Goddard, F. G.; Anjerul Islam, S.; Sen, S.; Ayyagari, R.; Luby, S. P. Effect of In-Line Drinking Water Chlorination at the Point of Collection on Child Diarrhoea in Urban Bangladesh: A Double-Blind, Cluster-Randomised Controlled Trial. *Lancet Global Health* **2019**, *7* (9), e1247–e1256.
- (18) Berendes, D.; Capone, D.; Knee, J.; Holcomb, D.; Sultana, S.; Pickering, A. J.; Brown, J. Associations between Enteric Pathogen Carriage and Height-for-Age, Weight-for-Age and Weight-for-Height in Children under 5 Years Old in Urban Dhaka, Bangladesh. *Epidemiology and Infection* **2020**, *148*, e39.
- (19) Navidad, J. F.; Griswold, D. J.; Gradus, M. S.; Bhattacharyya, S. Evaluation of Luminex XTAG Gastrointestinal Pathogen Analyte-Specific Reagents for High-Throughput, Simultaneous Detection of Bacteria, Viruses, and Parasites of Clinical and Public Health Importance. *Journal of Clinical Microbiology* **2013**, *51* (9), 3018–3024.
- (20) Green, H. C.; Haugland, R. A.; Varma, M.; Millen, H. T.; Borchardt, M. A.; Field, K. G.; Walters, W. A.; Knight, R.; Sivaganesan, M.; Kelty, C. A.; Shanks, O. C. Improved HF183 Quantitative Real-Time PCR Assay for Characterization of Human Fecal Pollution in Ambient Surface Water Samples. *Appl. Environ. Microbiol.* **2014**, *80* (10), 3086–3094.
- (21) Kelty, C. A.; Varma, M.; Sivaganesan, M.; Haugland, R. A.; Shanks, O. C. Distribution of Genetic Marker Concentrations for Fecal Indicator Bacteria in Sewage and Animal Feces. *Appl. Environ. Microbiol.* **2012**, *78* (12), 4225–4232.
- (22) Whale, A. S.; De Spiegelaere, W.; Trypsteen, W.; Nour, A. A.; Bae, Y.-K.; Benes, V.; Burke, D.; Cleveland, M.; Corbisier, P.; Devonshire, A. S.; Dong, L.; Drandi, D.; Foy, C. A.; Garson, J. A.; He, H.-J.; Hellemans, J.; Kubista, M.; Lievens, A.; Makrigiorgos, M. G.; Milavec, M.; Mueller, R. D.; Nolan, T.; O’Sullivan, D. M.; Pfaffl, M. W.; Rödiger, S.; Romsos, E. L.; Shipley, G. L.; Taly, V.; Untergasser, A.; Wittwer, C. T.; Bustin, S. A.; Vandesompele, J.; Huggett, J. F. The Digital MIQE Guidelines Update: Minimum Information for Publication of Quantitative Digital PCR Experiments for 2020. *Clinical Chemistry* **2020**, *66* (8), 1012–1029.

- (23) Pentimikko, N.; Katajisto, P. The Role of Stem Cell Niche in Intestinal Aging. *Mechanisms of Ageing and Development* **2020**, *191*, 111330.
- (24) Liu, T. C.; Vanbuskirk, K.; Ali, S. A.; Kelly, M. P.; Holtz, L. R.; Yilmaz, O. H.; Sadiq, K.; Iqbal, N.; Amadi, B.; Syed, S.; Ahmed, T.; Moore, S.; Ndao, I. M.; Isaacs, M. H.; Pfeifer, J. D.; Atlas, H.; Tarr, P. I.; Denno, D. M.; Moskaluk, C. A. A Novel Histological Index for Evaluation of Environmental Enteric Dysfunction Identifies Geographic-Specific Features of Enteropathy among Children with Suboptimal Growth. *PLoS Neglected Tropical Diseases* **2020**, *14* (1), e0007975.
- (25) Brown, J.; Cumming, O. Stool-Based Pathogen Detection Offers Advantages as an Outcome Measure for Water, Sanitation, and Hygiene Trials. *American Journal of Tropical Medicine and Hygiene* **2020**, *102* (2), 260–261.
- (26) Baqui, A. H.; Black, R. E.; Yunus, M.; Hoque, A. R. A.; Chowdhury, H. R.; Sack, R. B. Methodological Issues in Diarrhoeal Diseases Epidemiology: Definition of Diarrhoeal Episodes. *International Journal of Epidemiology* **1991**, *20* (4), 1057–1063.
- (27) Arnold, B. F.; Galiani, S.; Ram, P. K.; Hubbard, A. E.; Briceño, B.; Gertler, P. J.; Colford, J. M. Optimal Recall Period for Caregiver-Reported Illness in Risk Factor and Intervention Studies: A Multicountry Study. *American Journal of Epidemiology* **2013**, *177* (4), 361–370.
- (28) Mayer, R. E.; Reischer, G. H.; Ixenmaier, S. K.; Derox, J.; Blaschke, A. P.; Ebdon, J. E.; Linke, R.; Egle, L.; Ahmed, W.; Blanch, A. R.; Byamukama, D.; Savill, M.; Mushi, D.; Cristóbal, H. A.; Edge, T. A.; Schade, M. A.; Aslan, A.; Brooks, Y. M.; Sommer, R.; Masago, Y.; Sato, M. I.; Taylor, H. D.; Rose, J. B.; Wuertz, S.; Shanks, O. C.; Piringer, H.; Mach, R. L.; Savio, D.; Zessner, M.; Farnleitner, A. H. Global Distribution of Human-Associated Fecal Genetic Markers in Reference Samples from Six Continents. *Environ. Sci. Technol.* **2018**, *52* (9), 5076–5084.
- (29) Williams, J. M.; Duckworth, C. A.; Burkitt, M. D.; Watson, A. J. M. M.; Campbell, B. J.; Pritchard, D. M. Epithelial Cell Shedding and Barrier Function: A Matter of Life and Death at the Small Intestinal Villus Tip. *Veterinary Pathology* **2015**, *52* (3), 445–455.
- (30) Hall, P. A.; Coates, P. J.; Ansari, B.; Hopwood, D. Regulation of Cell Number in the Mammalian Gastrointestinal Tract: The Importance of Apoptosis. *J. Cell Sci.* **1994**, *107* (12), 3569–3577.
- (31) Barkla, D. H.; Gibson, P. R. The Fate of Epithelial Cells in the Human Large Intestine. *Pathology* **1999**, *31* (3), 230–238.
- (32) Watson, A. J. M.; Hall, L. J.; Hughes, K. R. Cell Shedding: Old Questions Answered. *Gastroenterology* **2012**, *143* (5), 1389–1391.
- (33) Eisenhoffer, G. T.; Loftus, P. D.; Yoshigi, M.; Otsuna, H.; Chien, C.-B.; Morcos, P. A.; Rosenblatt, J. Crowding Induces Live Cell Extrusion to Maintain Homeostatic Cell Numbers in Epithelia. *Nature* **2012**, *484* (7395), 546–549.
- (34) Bullen, T. F.; Forrest, S.; Campbell, F.; Dodson, A. R.; Hershman, M. J.; Pritchard, D. M.; Turner, J. R.; Montrose, M. H.; Watson, A. J. M. Characterization of Epithelial Cell Shedding from Human Small Intestine. *Laboratory Investigation* **2006**, *86* (10), 1052–1063.
- (35) Patterson, A. M.; Watson, A. J. M. Deciphering the Complex Signaling Systems That Regulate Intestinal Epithelial Cell Death Processes and Shedding. *Frontiers in Immunology* **2017**, *8* (JUL), 1–7.
- (36) Williams, J. M.; Duckworth, C. A.; Watson, A. J. M.; Frey, M. R.; Miguel, J. C.; Burkitt, M. D.; Sutton, R.; Hughes, K. R.; Hall, L. J.; Caamano, J. H.; Campbell, B. J.; Pritchard, D. M. A Mouse Model of Pathological Small Intestinal Epithelial Cell Apoptosis and Shedding Induced by Systemic Administration of Lipopolysaccharide. *Disease Models Mechanisms* **2013**, *6* (6), 1388–1399.
- (37) Knodler, L. A.; Vallance, B. A.; Celli, J.; Winfree, S.; Hansen, B.; Montero, M.; Steele-Mortimer, O. Dissemination of Invasive Salmonella via Bacterial-Induced Extrusion of Mucosal Epithelia. *Proc. Natl. Acad. Sci. U. S. A.* **2010**, *107* (41), 17733–17738.
- (38) Boshuizen, J. A.; Reimerink, J. H. J.; Korteland-van Male, A. M.; van Ham, V. J. J.; Koopmans, M. P. G.; Büller, H. A.; Dekker, J.; Einerhand, A. W. C. Changes in Small Intestinal Homeostasis, Morphology, and Gene Expression during Rotavirus Infection of Infant Mice. *Journal of Virology* **2003**, *77* (24), 13005–13016.
- (39) Ahlquist, D. A.; Harrington, J. J.; Burgart, L. J.; Roche, P. C. Morphometric Analysis of the “Mucocellular Layer” Overlying Colorectal Cancer and Normal Mucosa: Relevance to Exfoliation and Stool Screening. *Human Pathology* **2000**, *31* (1), 51–57.
- (40) Atmar, R. L.; Ramani, S.; Estes, M. K. Human Noroviruses. *Current Opinion in Infectious Diseases* **2018**, *31* (5), 422–432.
- (41) Estes, M. K.; Ettayebi, K.; Tenge, V. R.; Murakami, K.; Karandikar, U.; Lin, S. C.; Ayyar, B. V.; Cortes-Penfield, N. W.; Haga, K.; Neill, F. H.; Opekun, A. R.; Broughman, J. R.; Zeng, X. L.; Blutt, S. E.; Crawford, S. E.; Ramani, S.; Graham, D. Y.; Atmar, R. L. Human Norovirus Cultivation in Nontransformed Stem Cell-Derived Human Intestinal Enteroid Cultures: Success and Challenges. *Viruses* **2019**, *11* (7), 638.
- (42) Karst, S. M.; Tibbetts, S. A. Recent Advances in Understanding Norovirus Pathogenesis. *Journal of Medical Virology* **2016**, *88* (11), 1837–1843.
- (43) Guerrant, R. L.; Araujo, V.; Soares, E.; Kotloff, K.; Lima, A. A. M.; Cooper, W. H.; Lee, A. G. Measurement of Fecal Lactoferrin as a Marker of Fecal Leukocytes. *Journal of Clinical Microbiology* **1992**, *30* (5), 1238–1242.
- (44) Mercado, E. H.; Ochoa, T. J.; Ecker, L.; Cabello, M.; Durand, D.; Barletta, F.; Molina, M.; Gil, A. I.; Huicho, L.; Lanata, C. F.; Cleary, T. G. Fecal Leukocytes in Children Infected with Diarrheagenic Escherichia Coli. *Journal of Clinical Microbiology* **2011**, *49* (4), 1376–1381.
- (45) Luissint, A. C.; Parkos, C. A.; Nusrat, A. Inflammation and the Intestinal Barrier: Leukocyte-Epithelial Cell Interactions, Cell Junction Remodeling, and Mucosal Repair. *Gastroenterology* **2016**, *151* (4), 616–632.
- (46) Ingelsson, B.; Söderberg, D.; Strid, T.; Söderberg, A.; Bergh, A.-C.; Loitto, V.; Lotfi, K.; Segelmark, M.; Spyrou, G.; Rosén, A. Lymphocytes Eject Interferogenic Mitochondrial DNA Webs in Response to CpG and Non-CpG Oligodeoxynucleotides of Class C. *Proc. Natl. Acad. Sci. U. S. A.* **2018**, *115* (3), E478–E487.
- (47) Boyapati, R. K.; Tamborska, A.; Dorward, D. A.; Ho, G.-T. Advances in the Understanding of Mitochondrial DNA as a Pathogenic Factor in Inflammatory Diseases. *F1000Res.* **2017**, *6* (0), 169.
- (48) Colford, J. M.; Wade, T. J.; Schiff, K. C.; Wright, C. C.; Griffith, J. F.; Sandhu, S. K.; Burns, S.; Sobsey, M.; Lovelace, G.; Weisberg, S. B. Water Quality Indicators and the Risk of Illness at Beaches With Nonpoint Sources of Fecal Contamination. *Epidemiology* **2007**, *18* (1), 27–35.
- (49) Dwight, R. H.; Baker, D. B.; Semenza, J. C.; Olson, B. H. Health Effects Associated with Recreational Coastal Water Use: Urban Versus Rural California. *American Journal of Public Health* **2004**, *94* (4), 565–567.
- (50) Wade, T. J.; Calderon, R. L.; Sams, E.; Beach, M.; Brenner, K. P.; Williams, A. H.; Dufour, A. P. Rapidly Measured Indicators of Recreational Water Quality Are Predictive of Swimming-Associated Gastrointestinal Illness. *Environ. Health Perspect.* **2006**, *114* (1), 24–28.
- (51) Wade, T. J.; Calderon, R. L.; Brenner, K. P.; Sams, E.; Beach, M.; Haugland, R.; Wymer, L.; Dufour, A. P. High Sensitivity of Children to Swimming-Associated Gastrointestinal Illness. *Epidemiology* **2008**, *19* (3), 375–383.
- (52) Yau, V. M.; Schiff, K. C.; Arnold, B. F.; Griffith, J. F.; Gruber, J. S.; Wright, C. C.; Wade, T. J.; Burns, S.; Hayes, J. M.; McGee, C.; Gold, M.; Cao, Y.; Boehm, A. B.; Weisberg, S. B.; Colford, J. M. Effect of Submarine Groundwater Discharge on Bacterial Indicators and Swimmer Health at Avalon Beach, CA, USA. *Water Res.* **2014**, *59*, 23–36.
- (53) Sukhrie, F. H. A.; Teunis, P.; Vennema, H.; Copra, C.; Thijs Beersma, M. F. C.; Bogerman, J.; Koopmans, M. Nosocomial Transmission of Norovirus Is Mainly Caused by Symptomatic Cases. *Clinical Infectious Diseases* **2012**, *54* (7), 931–937.

(54) Haas, C. N. Quantitative Microbial Risk Assessment and Molecular Biology: Paths to Integration. *Environ. Sci. Technol.* **2020**, *54*, 8539–8546.

(55) He, X.; Chen, H.; Shi, W.; Cui, Y.; Zhang, X.-X. Persistence of Mitochondrial DNA Markers as Fecal Indicators in Water Environments. *Science of The Total Environment* **2015**, *533*, 383–390.

(56) Korajkic, A.; McMinn, B.; Harwood, V. Relationships between Microbial Indicators and Pathogens in Recreational Water Settings. *International Journal of Environmental Research and Public Health* **2018**, *15* (12), 2842.

(57) Korajkic, A.; Wanjugi, P.; Brooks, L.; Cao, Y.; Harwood, V. J. Persistence and Decay of Fecal Microbiota in Aquatic Habitats. *Microbiology and Molecular Biology Reviews* **2019**, *83* (4), na DOI: 10.1128/MMBR.00005-19.

(58) Kapoor, V.; Smith, C.; Santo Domingo, J. W.; Lu, T.; Wendell, D. Correlative Assessment of Fecal Indicators Using Human Mitochondrial DNA as a Direct Marker. *Environ. Sci. Technol.* **2013**, *47* (18), 130826150654007.

(59) Malla, B.; Haramoto, E. Host-Specific Mitochondrial DNA Markers for Tracking the Sources of Fecal Pollution. *Current Opinion in Environmental Science and Health* **2020**, *16*, 34–46.

(60) Tanvir Pasha, A. B. M.; Hinojosa, J.; Phan, D.; Lopez, A.; Kapoor, V. Detection of Human Fecal Pollution in Environmental Waters Using Human Mitochondrial DNA and Correlation with General and Human-Associated Fecal Genetic Markers. *Journal of Water and Health* **2020**, *18* (1), 8–18.

(61) Villemur, R.; Imbeau, M.; Vuong, M. N.; Masson, L.; Payment, P. An Environmental Survey of Surface Waters Using Mitochondrial DNA from Human, Bovine and Porcine Origin as Fecal Source Tracking Markers. *Water Res.* **2015**, *69*, 143–153.

(62) Zimmerman, B. D.; Ashbolt, N. J.; Garland, J. L.; Keely, S.; Wendell, D. Human Mitochondrial DNA and Endogenous Bacterial Surrogates for Risk Assessment of Graywater Reuse. *Environ. Sci. Technol.* **2014**, *48* (14), 7993–8002.

## Recommended by ACS

### Contribution of Tobacco Use and 4-(Methylnitrosamino)-1-(3-pyridyl)-1-butanone to Three Methyl DNA Adducts in Urine

Yi Wang, Chengguo Xing, *et al.*

AUGUST 23, 2018  
CHEMICAL RESEARCH IN TOXICOLOGY

READ 

### Intra- and Inter-Species Variability in Urinary N7-(1-Hydroxy-3-buten-2-yl)guanine Adducts Following Inhalation Exposure to 1,3-Butadiene

Luke Erber, Ivan Rusyn, *et al.*

NOVEMBER 02, 2021  
CHEMICAL RESEARCH IN TOXICOLOGY

READ 

### Influence of UGT2B10 Genotype on Urinary Excretion of 4-(Methylnitrosamino)-1-(3-pyridyl)-1-butanol-N-glucuronide by African American Smokers

Sharon E. Murphy, Sungshim L. Park, *et al.*

FEBRUARY 20, 2018  
CHEMICAL RESEARCH IN TOXICOLOGY

READ 

### Quantification of DNA Lesions Induced by 4-(Methylnitrosamino)-1-(3-pyridyl)-1-butanol in Mammalian Cells

Su Guo, Yinsheng Wang, *et al.*

FEBRUARY 04, 2019  
CHEMICAL RESEARCH IN TOXICOLOGY

READ 

Get More Suggestions >