

## Abstract

**Background.** The association between fine particulate matter (PM<sub>2.5</sub>) and mortality widely differs between as well as within countries. Differences in PM<sub>2.5</sub> composition can play a role in modifying the effect estimates, but there is little evidence about which components have higher impacts on mortality.

**Methods.** We applied a two-stage analysis on data collected from 210 locations in 16 countries. In the first stage, we estimated location-specific relative risks (RR) for mortality associated with daily total PM<sub>2.5</sub> through time series regression analysis. These estimates were then pooled in a meta-regression model that included city-specific logratio-transformed proportions of seven PM<sub>2.5</sub> components as well as meta-predictors derived from city-specific socio-economic and environmental indicators.

**Results.** We found significant associations between RR and several PM<sub>2.5</sub> components. Increasing the ammonium (NH<sub>4</sub><sup>+</sup>) proportion from 1 to 20%, while keeping a relative average proportion of other components, increased the RR from 1.0063 (95%CI: 1.0030-1.0097) to 1.0101 (95%CI:1.0069 -1.0133). Conversely, the same increase in nitrate (NO<sub>3</sub><sup>-</sup>) resulted in a reduced RR, from 1.0100 (95%CI: 1.0067-1.0133) to 1.0063 (95%CI: 1.0032-1.0095). Differences in composition explained a substantial part of the heterogeneity in PM<sub>2.5</sub> risk.

**Conclusions.** These findings can contribute to the identification of more hazardous emission sources. Further work is needed to understand the health impacts of PM<sub>2.5</sub> components and sources given the overlapping sources and correlations among many components.

## Introduction

Particulate matter (PM) is a major environmental risk factor to which the Global Burden of Diseases attributed between 4.1 and 5 million deaths worldwide in 2017.<sup>1</sup> In particular, evidence on short-term associations between exposure to fine particulate matter (PM<sub>2.5</sub>) and total and cause-specific mortality are well established,<sup>2,3</sup> although with some heterogeneity both between<sup>4</sup> and within countries.<sup>5,6</sup>

A potentially key factor explaining such geographical differences is the variation in the chemical composition of PM<sub>2.5</sub>, mostly related to different sources. PM<sub>2.5</sub> is a complex chemical mixture of various liquid droplets and solid particles varying in size, chemical composition, and other factors.<sup>7,8</sup> Some components are naturally present in the atmosphere, whereas others emanate from anthropogenic activities, either as direct emissions (primary components) or after chemical reactions in the atmosphere (secondary components). The proportions of the components vary substantially across locations,<sup>9</sup> and some components may be more harmful to health than others. The present study focuses on a comprehensive classification of the main chemical components of PM<sub>2.5</sub> that are sulfate (SO<sub>4</sub><sup>2-</sup>), nitrate (NO<sub>3</sub><sup>-</sup>), ammonium (NH<sub>4</sub><sup>+</sup>), the three of them forming the group of secondary inorganic aerosols, as well as black carbon (BC), organic carbon (OC), mineral dust (DUST) and sea salt (SS).<sup>10</sup> SO<sub>4</sub><sup>2-</sup> and NO<sub>3</sub><sup>-</sup> originate from the oxidation of sulphur and nitrogen oxides, whose sources include fossil fuel combustion (e.g. coal, gas, and oil) as well as volcanoes. The third secondary inorganic aerosol, NH<sub>4</sub><sup>+</sup>, originates mainly from fertilizer use and livestock.<sup>11</sup> Organic components, OC and BC, are emitted by all types of combustion, the former being more associated with residential sources such as biofuel and wildfire,<sup>9,12</sup> while the latter is often related to transportation emissions.<sup>13</sup> DUST contains coarser particles transported

from deserts,<sup>14,15</sup> as well as street, road dust and industrially emitted particles such as metals and cement.<sup>16,17</sup> Finally, SS originates from sea spray and is thus more prominent in coastal areas.<sup>10</sup>

Many of the components described above have been previously studied, either alone such as BC<sup>18,19</sup> and DUST,<sup>14,15</sup> or together as effect modifiers.<sup>20,21</sup> Nonetheless, results widely vary among studies with important heterogeneity found in meta-analyses.<sup>22</sup> This may be due in part to the difficulty of modelling compositions data, as well as limitations in disentangling component-specific effects from analyses performed in single locations or countries with relatively homogeneous composition of PM.

The objective of the present study is to identify and compare the all-cause mortality risks associated with the main chemical components of PM<sub>2.5</sub>, taking advantage of statistical methodologies for compositional data analysis methods and a large international database gathered within the Multi-Country Multi-City (MCC) Collaborative Research Network.

## **Methods**

### **Data**

The data consists of city-level daily time series of all-cause mortality, measured PM<sub>2.5</sub> concentrations and temperature, as well as estimated annual PM<sub>2.5</sub> composition and socio-economic indicators from the MCC database. We selected the cities with at least one full year of available data, and then restricted the analysis to 1999-2017, the period with available PM<sub>2.5</sub> composition data (see below) and the four previous years, allowing more stable estimates for some countries such as the US. The final dataset includes 210 urban areas in 16 countries. Table 1 summarizes data for each represented country. Details are provided in eAppendix A.

For each city, we extracted the average annual PM<sub>2.5</sub> components mass concentration estimates for the period 2003-2017 from a global reconstruction model.<sup>10</sup> We then divided each component by the sum of all seven components to obtain relative composition and computed the average composition across the whole period. Details are given in eAppendix A. We also gathered the proportion of people aged 65 years and older, the gross domestic product per capita, the total built-up area, the average and range of temperature as well as the greenness. Details about specific measures and years covered by each variable are given in eAppendix B (eTable 1).

## **Statistical analysis**

The statistical analysis followed a two-stage design, first estimating a relative risk (RR) associated with a 10  $\mu\text{g}/\text{m}^3$  increase in PM<sub>2.5</sub> at the city level, and then modeling the heterogeneity of these RRs in a meta-regression model. The analysis was entirely performed using the R software version 4.1.0<sup>23</sup> with additional packages `dlnm`,<sup>24</sup> `mixmeta`,<sup>25</sup> `compositions`,<sup>26</sup> and `zCompositions`.<sup>27</sup>

## **First-stage modeling**

At the city level, we performed a time series analysis with a quasi-Poisson regression model consistently with a previously published study.<sup>4</sup> Briefly, total PM<sub>2.5</sub> mass entered the model linearly as a 2-day moving average to account for both same-day and one-day delayed effects. We accounted for confounding by mean air temperature using a cubic B-spline of its 4-day moving average with knots at the 10<sup>th</sup>, 75<sup>th</sup>, and 90<sup>th</sup> percentiles. Finally, the model also included a factor for day-of-week to account for weekly cycles in mortality and a natural spline of time with seven degrees of freedom per year to account for seasonal effects and long-term trends.

## Definition of transformed components

The compositional nature and sum-to-one constraint of the components means that they are necessarily correlated and cannot be used directly as predictors in a meta-regression model. We therefore applied a compositional data methodology based on the *additive logratio* (ALR) approach of Aitchison,<sup>28–30</sup> which consists in transforming the compositional dataset  $x_1, \dots, x_D$  into  $D - 1$  new variables:

$$z_k = \log\left(\frac{x_k}{x_D}\right) \quad (1)$$

for  $k = 1, \dots, D - 1$ , using the  $D^{th}$  component as the baseline comparison. This transformation allows removing the sum-to-one constraint while retaining the relative information of all components<sup>31</sup>. Classical statistical analyses can then be performed on the  $z_k$  variables. Note that the final results are insensitive to the chosen baseline component  $x_D$  in equation (1).<sup>32</sup>

## Second-stage modeling

The second stage consisted of a two-level random-effects meta-regression<sup>25</sup> of the first-stage RR using the ALR transformed PM<sub>2.5</sub> components as meta-predictors:

$$\log(RR_{ij}) = \beta_0 + \sum_{k=1}^6 \beta_k \log\left(\frac{x_{ijk}}{x_{ij7}}\right) + \gamma_1 PC_{ij1} + \gamma_2 PC_{ij2} + \omega_j + \xi_{ij} + \epsilon_{ij} \quad (2)$$

where  $\log(RR_{ij})$  is the coefficient associated with a  $10 \mu g/m^3$  increase of PM<sub>2.5</sub> obtained in the first stage of the analysis, for city  $i$  of country  $j$ .  $x_{ijk}$  represents the proportion of PM<sub>2.5</sub> component  $k = 1, \dots, 7$  from the average annual PM<sub>2.5</sub> mass for city  $i$  of country  $j$ . We accounted for potential confounding from the socio-economic and large-scale environmental variables given above by including their first two principal components ( $PC_{ij1}$  and  $PC_{ij2}$ ) in the meta-regression model, which represented 67% of this dataset's variance (eFigure 1 in eAppendix B). Random

effects were added at the country and city level ( $\omega_j$  and  $\xi_{ij}$  respectively), allowing to control for confounding due to spatial differences such as climatology or country-specific policies. Finally, the  $\epsilon_{ij}$  component represents city level residual error. Model (2) was fitted by restricted maximum likelihood (REML).

We reported the compositional mean of PM<sub>2.5</sub> components for each country. We also reported the city and country-level best linear unbiased predictions (BLUPs) of RRs from the meta-regression model described above.<sup>25,33</sup> The reported RR represent the ratio of predicted mortality for a 10  $\mu\text{g}/\text{m}^3$  increase of PM<sub>2.5</sub> compared to its baseline, consistently with recent investigations.<sup>2,4,34</sup> Finally, we also checked the residuals to ensure that there is no apparent bias, heteroscedasticity, or departure from normality (see eAppendix C).

To interpret the results of the meta-regression model in Equation (2), we reported the relative excess risk (RER) as the ratio of predicted RRs<sup>35</sup> associated with a doubling of the relative proportion of each component. In addition, we predicted the RR for a range of values of each component  $x_j$ . We then interpreted results for each component by comparing predicted RR at their lowest and largest observed values to underscore the full scale of effect modification. When reporting RR and RER associated to specific components, the sub-composition of other components is kept constant under the sum-to-one constraint.

### **Effect modification assessment**

To assess how much effect modification is brought by variation in the PM<sub>2.5</sub> components in the full model (2), we also performed a meta-analysis without any meta-predictors (the “null” model), and another one with only the PC of confounding indicators (the “PC only” model). For each of the three models, we computed the Cochran Q and  $I^2$  which respectively test the presence

of heterogeneity and quantify its proportion between locations unexplained by the second-stage meta-regression model.<sup>25,36</sup> To decide whether the drop in  $Q$  and  $I^2$  between two nested models is significant, Wald tests were also conducted.<sup>37</sup> These tests assessed whether the  $\gamma_l$  coefficients for the PC only model and the  $\beta_k$  coefficients for the full model can be considered non-null (see equation 2).

## Results

### Descriptive statistics

Table 1 reports summary statistics of the mortality and pollution data aggregated per country. A total of almost 15 million deaths were included in the study overall. Figure 1 shows the world map with all the cities included in the study and their average observed  $PM_{2.5}$ . The highest levels of  $PM_{2.5}$  were observed in China, Chile and Mexico. On the other hand, northern countries (i.e., Sweden and Canada) as well as Australia showed the lowest  $PM_{2.5}$  levels.

Figure 2 displays the mean  $PM_{2.5}$  composition in each country. Some countries show stable compositions through the years while others reveal widely variable distributions. The wider variability is observed in Australia and Mediterranean countries, widely affected by DUST, a component that can represent a significant part of  $PM_{2.5}$  in one year and be almost absent the next one. DUST particles are usually coarser than other components, thus representing a higher proportion of the total mass. Overall, the two components representing the largest fraction of  $PM_{2.5}$  are generally  $SO_4^{2-}$  and  $NO_3^-$ , both linked to the burning of fossil fuel.  $NO_3^-$  is more represented in European countries except for Mediterranean ones, while  $SO_4^{2-}$  is widely present in hotter countries. OC represents a large part of the composition in Nordic countries since it is linked to both wildfires and residential wood burning. BC and  $NH_4^+$  are overall lower

components of the PM<sub>2.5</sub> composition. SS represents a visible part of total PM<sub>2.5</sub> mass only in mostly seaside countries, notably Portugal and the UK. Note that SS is also present in coastal locations of many other countries such as the US, although it is not visible in Figure 2 due to the large number of inland locations.

### **City-specific relative risks**

The RRs for each city are reported in Figure 1 and range from 0.995 in Valladolid (Spain) to 1.021 in Sendai (Japan), corresponding to mortality changes of -0.5% and 2.1% in association with a 10  $\mu\text{g}/\text{m}^3$  increase of PM<sub>2.5</sub>, respectively. Predicted RRs above 1 are found for 202 cities among the 210 considered in the analysis. The highest RRs are found in North-America, Mexico, and Japan, as well as specific locations in Europe such as Greece. In contrast, lower predicted RRs are found in Spain and Finland. eAppendix C provides insight on the location-specific residuals from the second-stage meta-regression.

### **Effect modification by PM<sub>2.5</sub> composition**

Figure 3A reports the RER associated with a doubling of the relative proportion of each component. Specifically, we found a significantly positive effect modification of NH<sub>4</sub><sup>+</sup>, suggesting that the RR of PM<sub>2.5</sub> increases by 0.08% as NH<sub>4</sub><sup>+</sup> doubles. RRs also increase with SO<sub>4</sub><sup>2-</sup> but with important uncertainty as shown by the wide confidence interval. Conversely, an increase in NO<sub>3</sub><sup>-</sup> significantly decreases the RR associated with PM<sub>2.5</sub> by around 0.08%. Finally, Figure 3A indicates no effect modification from carbonaceous components (BC and OC), and a slightly negative effect by SS and DUST although with important uncertainty.

Figure 3B shows the predicted RRs for PM<sub>2.5</sub> within observed ranges of each component, while keeping the relative proportions of other components constant and accounting for the sum-to-one



constraint. A more direct comparison of the predicted curves along with ternary representations are shown in eAppendix D. The logit form of reported curves stems from the ALR transformation applied to the components before the meta-regression model (see Equation 2) with the slope corresponding to the RER reported in Figure 3A. While all components are associated with positive mortality risks, results show substantial variations depending on their proportions.

Observed proportions of  $\text{NH}_4^+$  range from 0 to 22% with respective predicted RR of 1.0063 (95%CI: 1.0030-1.0097) and 1.0102 (95%CI:1.0070-1.0135), while keeping relative average of other components constant. RRs also increase with  $\text{SO}_4^{2-}$ , from 1.0066 (95%CI: 0.9992-1.0140) to 1.0092 (95%CI: 1.0035-1.0148) for respective proportions of 6 and 99%. Conversely, an increase in the proportion of  $\text{NO}_3^-$  from 1 to 71% is associated with a decrease in the RRs from 1.0100 (95%CI: 1.0067-1.0133) to 1.0037 (95%CI: 0.9998- 1.0077). The RR curve is flat for carbonaceous components (BC and OC), with a constant effect of  $\text{PM}_{2.5}$  around 1.0080 independently of their relative proportion. Finally, a slight decrease is seen from 1.0055 (95%CI: 0.9995-1.0115) to 1.0047 (0.9975-1.0120) for SS and from 1.0067 (95%CI: 1.0027-1.0108) to 1.0005 (95%CI: 0.9982- 1.0119) for DUST, although with wide confidence intervals.

Table 2 reports the assessment of the effect modification by composition. It indicates that including the components as meta-predictors significantly reduces residual heterogeneity in the meta-regression model. The  $Q$  statistics drops from 473 in the socio-economic and environment PC only model to 313 in the full model, with a drop in  $I^2$  from 56% to 36%. A Wald test on composition variable coefficients has a p-value of about 0.004, indicating that the composition explains part of the heterogeneity. Table 2 also shows that the PC-only model results in a negligible drop in residual heterogeneity compared to the null model. Even though the Wald p-

value is close to the nominal 5%, in the PC-only and full models, the socio-economic and environment PCs are associated with approximately null coefficients.

## Discussion

This study provides original evidence that the mortality risks associated with exposure to PM<sub>2.5</sub> varies depending on the chemical composition of the particulate matter. All the results indicate that the heterogeneity in risk to PM<sub>2.5</sub> is in large part explained by its composition. While all the components are associated with positive relative risks for mortality, changes in their proportion modifies the predicted risk. Although the effect modification is illustrated by comparing RRs at the lowest and largest values of each component, we acknowledge such changes in the composition are not representative of achievable policy results.

We found higher RR associated with PM<sub>2.5</sub> for cities with a larger part of NH<sub>4</sub><sup>+</sup> in the mix, but a decrease of the RR when the part of NO<sub>3</sub><sup>-</sup> increases. Surprisingly, we found no effect modification associated with carbonaceous components (BC and OC) and DUST, while there was important uncertainty about the role of SO<sub>4</sub><sup>2-</sup> and SS proportion. This uncertainty was probably linked to the extreme variability of the former and the rarity of the latter.

The most interesting result is about the role of ammonium (NH<sub>4</sub><sup>+</sup>) in enhancing the harmful effects of PM<sub>2.5</sub>. This is a component that has received less attention than others such as BC, OC, and SO<sub>4</sub><sup>2-</sup>, although it is one of the three secondary inorganic aerosols. Recently published studies reviewed by the authors have not identified any previous evidence on potential effect modification of NH<sub>4</sub><sup>+</sup> <sup>20,21,38-41</sup>. However, a Canadian cohort study identified NH<sub>4</sub><sup>+</sup> as the component with the highest coefficient in a model that included all components and total PM<sub>2.5</sub> concentration.<sup>42</sup> Interestingly, this is the only previous study we are aware of that used a strategy

similar to the compositional data approach considered in this contribution. Few studies focusing on the concentration of components rather than their effect modification have reported a positive association between mortality and  $\text{NH}_4^+$  levels, although the analyses included many other components.<sup>43–46</sup> Besides, confounding by total  $\text{PM}_{2.5}$  concentration is rarely accounted for in these studies. Some studies also linked agriculture, responsible for the largest part of  $\text{NH}_4^+$ , as the most adverse source in Europe and parts of Asia.<sup>47</sup>

$\text{NH}_4^+$  shows important co-variation with the two other secondary inorganic components (see eFigure 8). Indeed,  $\text{NH}_4^+$  is typically found as ammonium sulfate or ammonium nitrate within  $\text{PM}_{2.5}$  and likely varies strongly with  $\text{SO}_4^{2-}$  in some communities and  $\text{NO}_3^-$  or organics in others. The effect modifications found for  $\text{SO}_4^{2-}$  and  $\text{NO}_3^-$ , positive for the former and negative for the latter, suggest that ammonium sulfate may be the most harmful one. Further investigation is nonetheless needed to disentangle the health effects of ammonium nitrate and ammonium sulfate. Evidence on their toxicology is so far inconclusive,<sup>48</sup> although secondary inorganic components have been linked to the hypothalamus–pituitary–adrenal (HPA) axis, increasing cardiometabolic risks.<sup>49</sup> It also cannot be ruled out that the adverse effect found might be due to interaction effects with other most harmful components.<sup>50</sup> Overall,  $\text{NH}_4^+$  is also the most correlated component with the total  $\text{PM}_{2.5}$  mass in our dataset (see eTable 2). It has been suggested that ammonia, the main precursor of  $\text{NH}_4^+$ , is a major driver of  $\text{PM}_{2.5}$ , at least in some countries.<sup>51–53</sup>

The other important result of our analysis is the observed reduction in RRs for high proportions of nitrate ( $\text{NO}_3^-$ ) in the composition of  $\text{PM}_{2.5}$ . Indeed,  $\text{NO}_3^-$  represents a large part of the total concentration in northern and central European countries (Estonia, Finland, Germany, Switzerland, Sweden, and the UK, see Figure 2), which are areas displaying weaker associations between  $\text{PM}_{2.5}$  and mortality.<sup>4</sup>  $\text{NO}_3^-$  is a secondary product of nitrogen oxides emissions, emitted

by gas and oil burning, and is thus mainly related to traffic. Note that in the data used here, it presents an important compositional variation value with BC (see eFigure 8), meaning that when it increases,  $\text{NO}_3^-$  tends to replace BC. Both are usually considered traffic-related components,  $\text{NO}_3^-$  being mainly related to oil and gas combustion while BC also includes all biofuel combustion.<sup>9</sup> Previous research of sources indicates that traffic is the source most consistently associated with health impacts<sup>7,54</sup> and with the highest toxicological evidence.<sup>55</sup> Since our results indicate lower risks associated with  $\text{NO}_3^-$  compared to BC, further work is needed to explore the implications of mitigation strategies focusing more heavily on BC emissions compared to  $\text{NO}_3^-$  precursors.

The strengths of the study lie in both the data used, with a large number of cities across multiple countries, and the methods applied. It takes advantage of a large international database from the MCC network to evaluate how  $\text{PM}_{2.5}$  composition affects its association with all-cause mortality. A wide heterogeneity in the composition is observed between locations, allowing the comparison of different compositional patterns. The study uses state-of-the-art statistical methods, including the recently proposed mixed-effects meta-analysis two-stage framework<sup>25</sup> and compositional data analysis. The mixed-effect framework allows considering several levels of heterogeneity to the meta-analysis, which in our study are country and city level. This allows capturing heterogeneity at both levels, such as related to differential country-wide and city-specific characteristics, as well as climatic or environmental conditions that may modify the association between  $\text{PM}_{2.5}$  and all-cause mortality. Compositional data analysis provides a rigorous framework to analyze the role of different constituents of  $\text{PM}_{2.5}$ . Such data structures are prone to spurious results and misinterpretations if not analyzed properly, as already observed by Pearson.<sup>56</sup> In the present case,

compositional data analysis seems successful in reducing confounding by total PM<sub>2.5</sub> mass as illustrated by the low correlation on the relative scale shown in eTable 2.

Although the wide range of locations available is a strength of the study, it has also limitations regarding spatial representativeness. Available data were more heavily weighted to high-income countries (North America, Europe, and Japan), which means that some types of compositions might not be well represented. Further work should focus on gathering and analysing data from lower-income countries. A second limitation is related to the measurement of total PM<sub>2.5</sub> that differs across locations. A part of this uncertainty is nonetheless captured by the country-level random effects added to the model. The composition data we used are derived from remote sensing rather than station measurements, providing a consistent measure of the compositions across locations. However, this also means that this dataset is estimated rather than measured, meaning that some level of error and uncertainty in the reconstruction is expected. The difference between estimates and actual composition may vary by region and components due to complex interactions between diverse emission sources as well as uncertainties in the models generating the data.<sup>10</sup> Important uncertainty is associated to DUST which also contains industrial metals. The other shortcoming of the considered dataset is the lack of data on specific components such as metals that have been previously linked to adverse mortality outcomes.<sup>22</sup>

The analysis performed here relies on the underlying assumption that the composition of PM<sub>2.5</sub> and its association with mortality have stayed roughly constant during the past 20 years. This assumption allows extending city-specific time series for more stable first-stage risk estimation, and consider only a limited number of meta-predictor in the second-stage. Besides, Figure 2 suggests that it is a reasonable assumption with few exceptions (UK and Greece). However, if PM<sub>2.5</sub> chemical composition impacts the health, the effects of PM<sub>2.5</sub> over time are likely to

change due to changes in chemical composition; thus this issue warrants further research. The first stage analysis also assumes linearity of the dose-response relationship between  $PM_{2.5}$  and mortality, although some studies suggest it might be slightly supralinear.<sup>4</sup> A potential extension of our approach would be to account for temporal differences, both as a long-term trend and as a seasonal pattern by using monthly data, as well as to account for potentially nonlinear first-stage associations. However, these would require longer time-series than what is available for many countries in the MCC dataset, and it poses non-trivial methodological problems. These extensions can be the topic of future research.

Although the model assessments suggest that the results reported above are robust to confounding by either socio-economic indicators or specific regional effects, and the residual analysis does not show obvious patterns that may have been missed by the model either, some residual confounding is still possible. Humidity is not addressed in the first stage because of the lack of data in many MCC locations. Removing it from every location allows more consistency in the first stage estimates, increasing the power of the second stage meta-regression. The city-specific socio-economic and large-scale environmental indicators that have been introduced in the second stage model only represent a fraction of city-specific characteristics that may affect vulnerability to  $PM_{2.5}$ , and are limited to a few years. Additional work, is needed to gather a larger list of standardized city-specific characteristics in order to better explore socio-economic indicators in more detail than the variables used here.

The main message of the present paper is that  $PM_{2.5}$  composition plays a significant role in the observed heterogeneity of mortality risk linked to air pollution and that it necessitates appropriate analytical methods. We found that the most harmful component may be ammonium, while we did not identify changes in the health impacts of  $PM_{2.5}$  total mass based on the widely studied black

carbon and organic carbon components. At the same time, a significant decrease in the health risk was associated with higher proportions of nitrates. These results may suggest that specific action aimed at ammonia emissions, including the agricultural sector, as well as decreasing the part of BC compared to nitrates precursors in traffic-related emissions may prove effective in reducing the health impacts of air pollution. These results also suggest the need for studies of ammonium nitrate and ammonium sulfate to disentangle the effects of these components.

## Tables

**Table 1: Description of first-stage data aggregated per country**

Country	Cities	Data period*	Total mortality	Mean PM <sub>2.5</sub> (10 – 90 percentiles) in $\mu\text{g}/\text{m}^3$
Australia	3	2000-2009	388 122	7.0 (3.2 – 11.9)
Canada	19	1999-2015	1 824 857	8.0 (2.7 – 15.0)
Chile	4	2008-2014	293 477	32.1 (8.8 – 59.7)
China	3	2013-2015	248 716	61.2 (19.9 – 120.4)
Estonia	1	2008-2015	8 226	9.6 (2.1 – 19.4)
Finland	1	1999-2014	117 610	16.8 (4.8 – 34.4)
Germany	11	2004-2015	1 303 058	14.3 (5.4 - 25.4)
Greece	1	2007-2010	118 034	21.9 (11.5 – 34.0)
Japan	36	2011-2015	1 292 348	14.3 (5.5 – 25.5)
Mexico	3	2003-2012	1 148 573	27.0 (14.0 – 41.3)
Portugal	1	2004-2017	315 615	12.5 (4.9 – 23.2)
Spain	15	2004-2014	410 043	13.2 (5.0 - 24.0)
Sweden	1	2001-2010	90 670	8.2 (3.6 - 14.4)
Switzerland	4	1999-2013	128 779	19.3 (6.7 - 35.8)
UK	25	1999-2016	1 589 098	12.3 (4.8 - 23.4)
USA	82	1999-2006	5 494 039	13.0 (5.0 - 23.4)

\* For the first stage only. It may slightly vary within countries because of missing values.

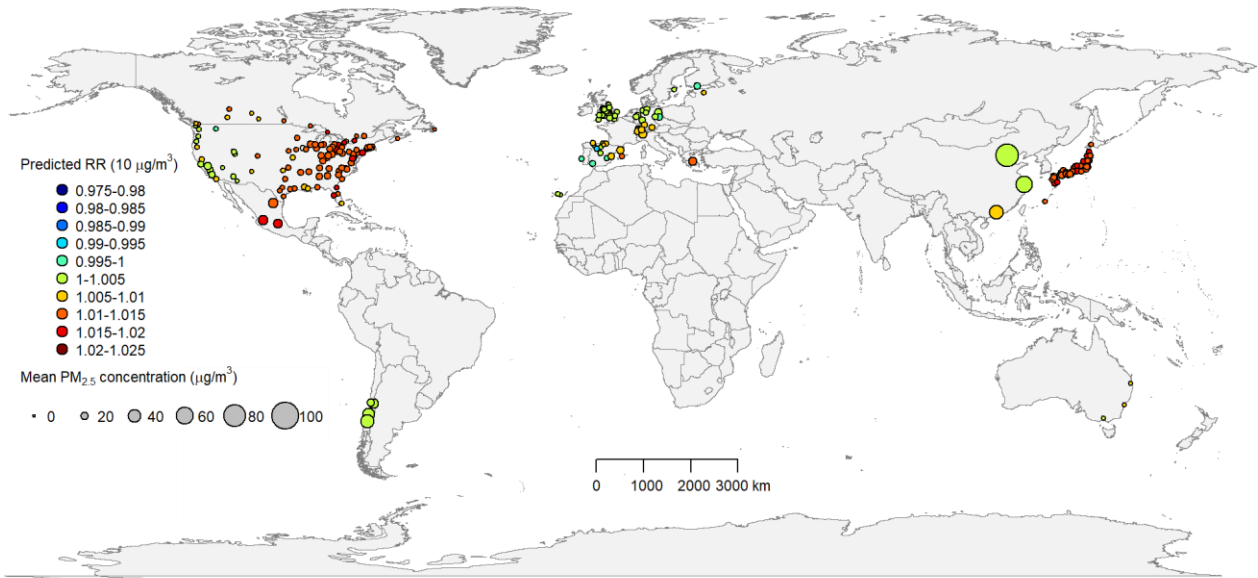
**Table 2: Measures of residual heterogeneity for second-stage meta-analysis specification.**

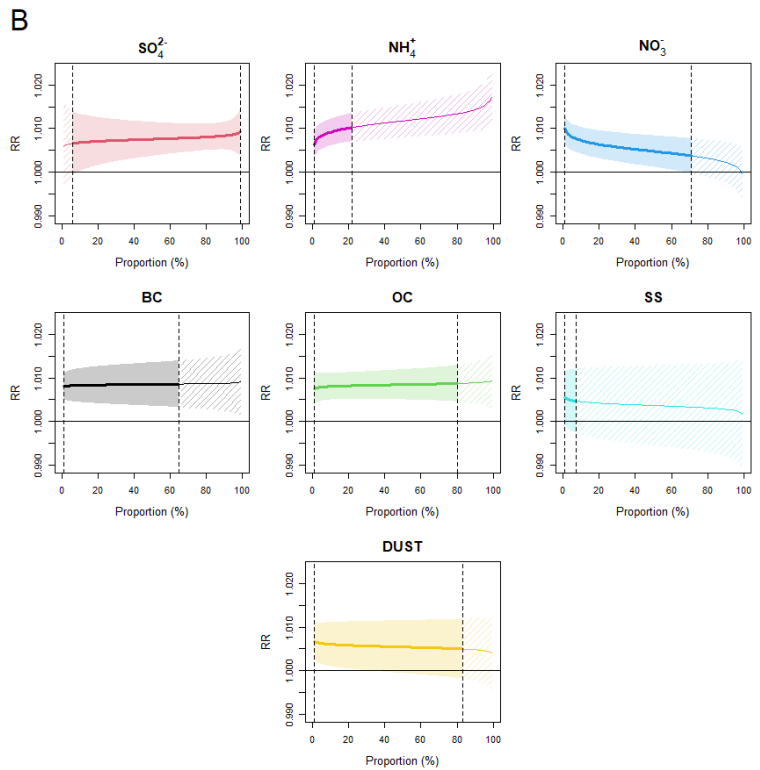
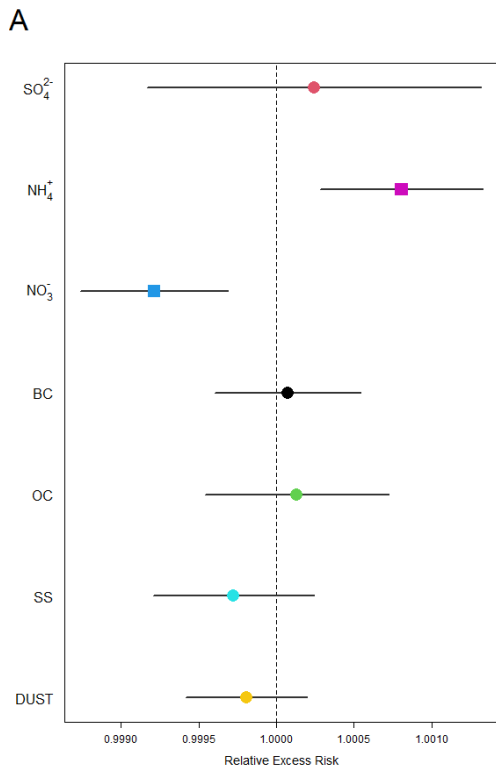
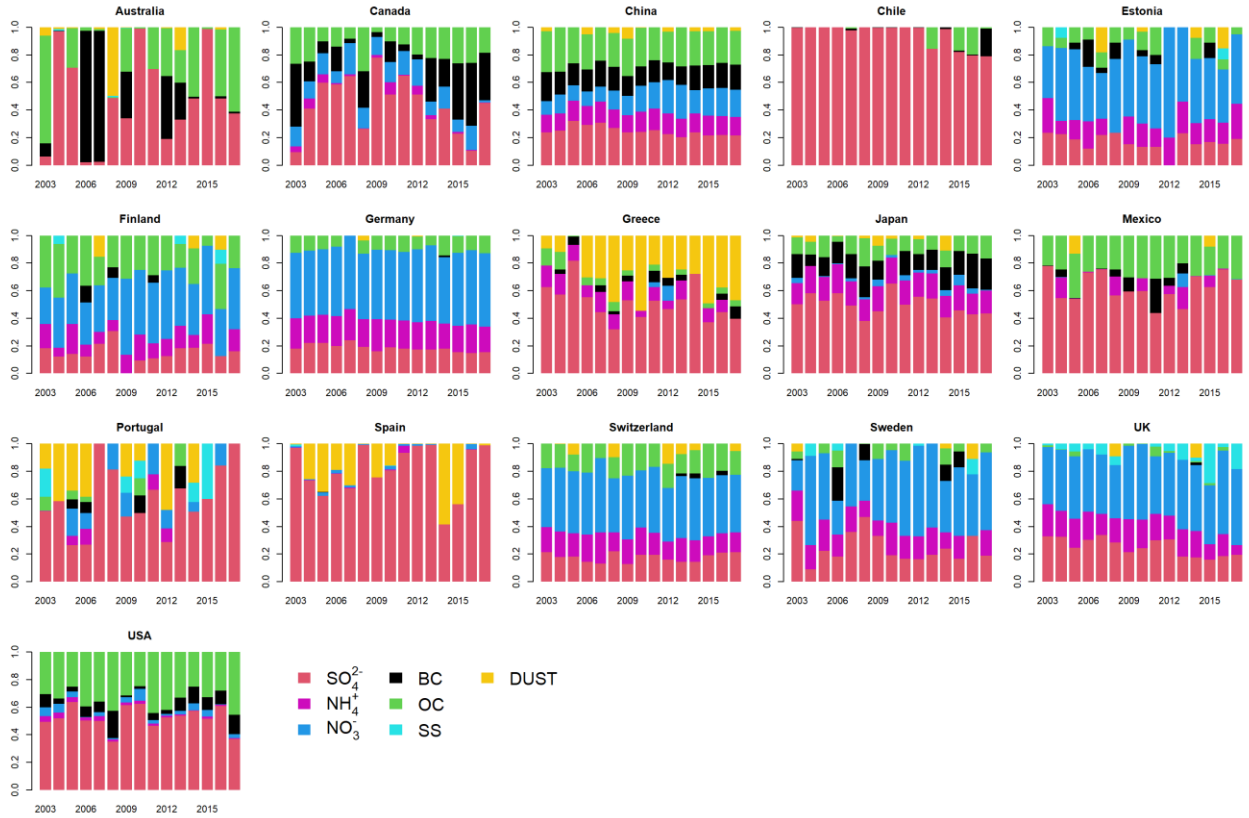
	Cochran Q	I <sup>2</sup> (%)	Wald statistic*	p-value*
Full model	312.6	36.0	19.0	0.0041
PC only	472.6	56.4	6.8	0.0337
Null model	500.9	58.5	-	-

\* Wald statistic and associated p-value test nested hypotheses compared to the model on the line below.



# Figures







## Figure Legends

Figure 1: Locations used in the study with their mean PM<sub>2.5</sub> concentration and best linear unbiased predictions (BLUPs) of relative risks (RRs) per 10  $\mu\text{g}/\text{m}^3$  increase in PM<sub>2.5</sub>.

Figure 2: Annual geometrical mean of the PM<sub>2.5</sub> composition in each country.

Figure 3: Effect modification from each PM<sub>2.5</sub> component. A: relative excess risk (RER) associated to doubling the relative proportion of each component with 95% confidence interval. B: predicted relative risks (RRs) for different values of each component while keeping the other constituents constant. The predicted RR is associated with an increase of 10 $\mu\text{g}/\text{m}^3$  in PM<sub>2.5</sub>. Thick lines indicate the range of observed values for each component, while thin dashed lines indicate extrapolations. Coloured bands represent 95% confidence regions.

## Bibliography

1. Stanaway JD, Afshin A, Gakidou E, et al. Global, regional, and national comparative risk assessment of 84 behavioural, environmental and occupational, and metabolic risks or clusters of risks for 195 countries and territories, 1990–2017: a systematic analysis for the Global Burden of Disease Study 2017. *The Lancet*. 2018;392(10159):1923-1994. doi:10.1016/S0140-6736(18)32225-6
2. Atkinson RW, Kang S, Anderson HR, Mills IC, Walton HA. Epidemiological time series studies of PM<sub>2.5</sub> and daily mortality and hospital admissions: a systematic review and meta-analysis. *Thorax*. 2014;69(7):660-665. doi:10.1136/thoraxjnl-2013-204492
3. R ckerl R, Schneider A, Breitner S, Cyrys J, Peters A. Health effects of particulate air pollution: A review of epidemiological evidence. *Inhal Toxicol*. 2011;23(10):555-592. doi:10.3109/08958378.2011.593587
4. Liu C, Chen R, Sera F, et al. Ambient Particulate Air Pollution and Daily Mortality in 652 Cities. *N Engl J Med*. 2019;381(8):705-715. doi:10.1056/NEJMoa1817364
5. Chen R, Yin P, Meng X, et al. Fine Particulate Air Pollution and Daily Mortality. A Nationwide Analysis in 272 Chinese Cities. *Am J Respir Crit Care Med*. 2017;196(1):73-81. doi:10.1164/rccm.201609-1862OC
6. Franklin M, Zeka A, Schwartz J. Association between PM<sub>2.5</sub> and all-cause and specific-cause mortality in 27 US communities. *J Expo Sci Environ Epidemiol*. 2007;17(3):279-287. doi:10.1038/sj.jes.7500530
7. Adams K, Greenbaum DS, Shaikh R, Erp AM van, Russell AG. Particulate matter components, sources, and health: Systematic approaches to testing effects. *J Air Waste Manag Assoc*. 2015;65(5):544-558. doi:10.1080/10962247.2014.1001884
8. Kelly FJ, Fussell JC. Size, source and chemical composition as determinants of toxicity attributable to ambient particulate matter. *Atmos Environ*. 2012;60:504-526. doi:10.1016/j.atmosenv.2012.06.039
9. McDuffie EE, Smith SJ, O'Rourke P, et al. A global anthropogenic emission inventory of atmospheric pollutants from sector- and fuel-specific sources (1970&ndash;2017): An application of the Community Emissions Data System (CEDS). *Earth Syst Sci Data Discuss*. Published online June 3, 2020:1-49. doi:https://doi.org/10.5194/essd-2020-103
10. van Donkelaar A, Martin RV, Li C, Burnett RT. Regional Estimates of Chemical Composition of Fine Particulate Matter Using a Combined Geoscience-Statistical Method with Information from Satellites, Models, and Monitors. *Environ Sci Technol*. 2019;53(5):2595-2611. doi:10.1021/acs.est.8b06392
11. Park RJ, Jacob DJ, Field BD, Yantosca RM, Chin M. Natural and transboundary pollution influences on sulfate-nitrate-ammonium aerosols in the United States: Implications for policy. *J Geophys Res Atmospheres*. 2004;109(D15). doi:10.1029/2003JD004473

12. Meng J, Martin RV, Li C, et al. Source Contributions to Ambient Fine Particulate Matter for Canada. *Environ Sci Technol*. 2019;53(17):10269-10278. doi:10.1021/acs.est.9b02461
13. Bond TC, Streets DG, Yarber KF, Nelson SM, Woo JH, Klimont Z. A technology-based global inventory of black and organic carbon emissions from combustion. *J Geophys Res-Atmospheres*. 2004;109(D14):D14203. doi:10.1029/2003JD003697
14. Hashizume M, Kim Y, Ng CFS, et al. Health Effects of Asian Dust: A Systematic Review and Meta-Analysis. *Environ Health Perspect*. 2020;128(6):066001. doi:10.1289/EHP5312
15. Stafoggia M, Zauli-Sajani S, Pey J, et al. Desert Dust Outbreaks in Southern Europe: Contribution to Daily PM10 Concentrations and Short-Term Associations with Mortality and Hospital Admissions. *Environ Health Perspect*. 2016;124(4):413-419. doi:10.1289/ehp.1409164
16. Chen S, Zhang X, Lin J, et al. Fugitive Road Dust PM2.5 Emissions and Their Potential Health Impacts. *Environ Sci Technol*. 2019;53(14):8455-8465. doi:10.1021/acs.est.9b00666
17. Philip S, Martin RV, Snider G, et al. Anthropogenic fugitive, combustion and industrial dust is a significant, underrepresented fine particulate matter source in global atmospheric models. *Environ Res Lett*. 2017;12(4):044018. doi:10.1088/1748-9326/aa65a4
18. Janssen NAH, Hoek G, Simic-Lawson M, et al. Black Carbon as an Additional Indicator of the Adverse Health Effects of Airborne Particles Compared with PM10 and PM2.5. *Environ Health Perspect*. 2011;119(12):1691-1699. doi:10.1289/ehp.1003369
19. Luben TJ, Nichols JL, Dutton SJ, et al. A systematic review of cardiovascular emergency department visits, hospital admissions and mortality associated with ambient black carbon. *Environ Int*. 2017;107:154-162. doi:10.1016/j.envint.2017.07.005
20. Bell ML, Ebisu K, Peng RD, Samet JM, Dominici F. Hospital Admissions and Chemical Composition of Fine Particle Air Pollution. *Am J Respir Crit Care Med*. 2009;179(12):1115-1120. doi:10.1164/rccm.200808-1240OC
21. Franklin M, Koutrakis P, Schwartz J. The Role of Particle Composition on the Association Between PM2.5 and Mortality. *Epidemiology*. 2008;19(5):680-689.
22. Yang Y, Ruan Z, Wang X, et al. Short-term and long-term exposures to fine particulate matter constituents and health: A systematic review and meta-analysis. *Environ Pollut*. 2019;247:874-882. doi:10.1016/j.envpol.2018.12.060
23. R Core Team. *R: A Language and Environment for Statistical Computing*. R Foundation for Statistical Computing; 2020. <http://www.R-project.org/>
24. Gasparrini A. Distributed lag linear and non-linear models in R: the package dlnm. *J Stat Softw*. 2011;43(8):1.

25. Sera F, Armstrong B, Blangiardo M, Gasparrini A. An extended mixed-effects framework for meta-analysis. *Stat Med.* 2019;38(29):5429-5444. doi:10.1002/sim.8362
26. van den Boogaart KG, Tolosana-Delgado R. “compositions”: A unified R package to analyze compositional data. *Comput Geosci.* 2008;34(4):320-338. doi:10.1016/j.cageo.2006.11.017
27. Palarea-Albaladejo J, Martín-Fernández JA. zCompositions — R package for multivariate imputation of left-censored data under a compositional approach. *Chemom Intell Lab Syst.* 2015;143:85-96. doi:10.1016/j.chemolab.2015.02.019
28. Aitchison J. A New Approach to Null Correlations of Proportions. *Math Geol.* 1981;13(2).
29. Aitchison J. The Statistical Analysis of Compositional Data. *J R Stat Soc Ser B Methodol.* 1982;44(2):139-160. doi:10.1111/j.2517-6161.1982.tb01195.x
30. Aitchison J. Principal component analysis of compositional data. *Biometrika.* 1983;70(1):57-65. doi:10.1093/biomet/70.1.57
31. Aitchison J, Bacon-Shone J. Log contrast models for experiments with mixtures. *Biometrika.* 1984;71(2):323-330. doi:10.1093/biomet/71.2.323
32. Aitchison J. *The Statistical Analysis of Compositional Data.* Chapman & Hall, Ltd.; 1986.
33. Gasparrini A, Armstrong B, Kenward MG. Multivariate meta-analysis for non-linear and other multi-parameter associations. *Stat Med.* 2012;31. doi:10.1002/sim.5471
34. Pope CA, Coleman N, Pond ZA, Burnett RT. Fine particulate air pollution and human mortality: 25+years of cohort studies. *Environ Res.* 2020;183:108924. doi:10.1016/j.envres.2019.10892435. Suissa S. Relative Excess Risk: An Alternative Measure of Comparative Risk. *Am J Epidemiol.* 1999;150(3):279-282. doi:10.1093/oxfordjournals.aje.a009999
36. Higgins JPT, Thompson SG. Quantifying heterogeneity in a meta-analysis. *Stat Med.* 2002;21(11):1539-1558. doi:10.1002/sim.1186
37. Harrell F. *Regression Modeling Strategies: With Applications to Linear Models, Logistic Regression, and Survival Analysis.* 2nd ed. Springer-Verlag; 2015. doi:10.1007/978-1-4757-3462-1
38. Chen H, Zhang Z, van Donkelaar A, et al. Understanding the Joint Impacts of Fine Particulate Matter Concentration and Composition on the Incidence and Mortality of Cardiovascular Disease: A Component-Adjusted Approach. *Environ Sci Technol.* 2020;54(7):4388-4399. doi:10.1021/acs.est.9b06861
39. Kioumourtzoglou M-A, Austin E, Koutrakis P, Dominici F, Schwartz J, Zanobetti A. PM2.5 and survival among older adults: Effect modification by particulate composition. *Epidemiology.* 2015;26(3):321-327. doi:10.1097/EDE.0000000000000269

40. Peng RD, Bell ML, Geyh AS, et al. Emergency Admissions for Cardiovascular and Respiratory Diseases and the Chemical Composition of Fine Particle Air Pollution. *Environ Health Perspect.* 2009;117(6):957-963. doi:10.1289/ehp.0800185
41. Wang M, Beelen R, Stafoggia M, et al. Long-term exposure to elemental constituents of particulate matter and cardiovascular mortality in 19 European cohorts: Results from the ESCAPE and TRANSPHORM projects. *Environ Int.* 2014;66:97-106. doi:10.1016/j.envint.2014.01.026
42. Crouse DL, Philip S, Donkelaar A van, et al. A New Method to Jointly Estimate the Mortality Risk of Long-Term Exposure to Fine Particulate Matter and its Components. *Sci Rep.* 2016;6(1):1-10. doi:10.1038/srep18916
43. Huang W, Cao J, Tao Y, et al. Seasonal Variation of Chemical Species Associated With Short-Term Mortality Effects of PM<sub>2.5</sub> in Xi'an, a Central City in China. *Am J Epidemiol.* 2012;175(6):556-566. doi:10.1093/aje/kwr342
44. Lin H, Tao J, Du Y, et al. Particle size and chemical constituents of ambient particulate pollution associated with cardiovascular mortality in Guangzhou, China. *Environ Pollut.* 2016;208:758-766. doi:10.1016/j.envpol.2015.10.056
45. Liu S, Zhang K. Fine particulate matter components and mortality in Greater Houston: Did the risk reduce from 2000 to 2011? *Sci Total Environ.* 2015;538:162-168. doi:10.1016/j.scitotenv.2015.08.037
46. Son J-Y, Lee J-T, Kim K-H, Jung K, Bell ML. Characterization of Fine Particulate Matter and Associations between Particulate Chemical Constituents and Mortality in Seoul, Korea. *Environ Health Perspect.* 2012;120(6):872-878. doi:10.1289/ehp.1104316
47. Lelieveld J, Evans JS, Fnais M, Giannadaki D, Pozzer A. The contribution of outdoor air pollution sources to premature mortality on a global scale. *Nature.* 2015;525(7569):367-371. doi:10.1038/nature15371
48. Xu J, Hu W, Liang D, Gao P. Photochemical impacts on the toxicity of PM<sub>2.5</sub>. *Crit Rev Environ Sci Technol.* 2020;0(0):1-27. doi:10.1080/10643389.2020.1816126
49. Niu Y, Chen R, Xia Y, et al. Fine particulate matter constituents and stress hormones in the hypothalamus–pituitary–adrenal axis. *Environ Int.* 2018;119:186-192. doi:10.1016/j.envint.2018.06.027
50. Cassee FR, Héroux M-E, Gerlofs-Nijland ME, Kelly FJ. Particulate matter beyond mass: recent health evidence on the role of fractions, chemical constituents and sources of emission. *Inhal Toxicol.* 2013;25(14):802-812. doi:10.3109/08958378.2013.850127
51. Air Quality Expert Group. *Mitigation of United Kingdom PM<sub>2.5</sub> Concentrations.* Department for Environment, Food and Rural Affairs; 2013:49. [https://uk-air.defra.gov.uk/assets/documents/reports/cat11/1508060903\\_DEF-PB14161\\_Mitigation\\_of\\_UK\\_PM25.pdf](https://uk-air.defra.gov.uk/assets/documents/reports/cat11/1508060903_DEF-PB14161_Mitigation_of_UK_PM25.pdf)



52. Pinder RW, Adams PJ, Pandis SN. Ammonia Emission Controls as a Cost-Effective Strategy for Reducing Atmospheric Particulate Matter in the Eastern United States. *Environ Sci Technol*. 2007;41(2):380-386. doi:10.1021/es060379a
53. Wu Y, Gu B, Erisman JW, et al. PM<sub>2.5</sub> pollution is substantially affected by ammonia emissions in China. *Environ Pollut*. 2016;218:86-94. doi:10.1016/j.envpol.2016.08.027
54. Hime NJ, Marks GB, Cowie CT. A Comparison of the Health Effects of Ambient Particulate Matter Air Pollution from Five Emission Sources. *Int J Environ Res Public Health*. 2018;15(6):1206. doi:10.3390/ijerph15061206
55. Park M, Joo HS, Lee K, et al. Differential toxicities of fine particulate matters from various sources. *Sci Rep*. 2018;8(1):17007. doi:10.1038/s41598-018-35398-0
56. Pearson K. Mathematical contributions to the theory of evolution.—On a form of spurious correlation which may arise when indices are used in the measurement of organs. *Proc R Soc Lond*. 1897;60(359-367):489-498. doi:10.1098/rspl.1896.0076