



Impact of air pollution on educational attainment for respiratory health treated students: A cross sectional data linkage study

Amy Mizen^a, Jane Lyons^a, Ai Milojevic^b, Ruth Doherty^c, Paul Wilkinson^b, David Carruthers^d, Ashley Akbari^a, Iain Lake^e, Gwyneth A. Davies^a, Mohammad Al Sallakh^a, Richard Fry^a, Lorraine Dearden^f, Sarah E Rodgers^{g,*}

^a Swansea University Medical School, Singleton Park, Swansea, UK

^b Department of Social and Environmental Health Research, London School of Hygiene and Tropical Medicine, London, UK

^c School of GeoSciences, The University of Edinburgh, Edinburgh, UK

^d Cambridge Environmental Research Consultants, Cambridge, UK

^e School of Environmental Sciences, University of East Anglia, Norwich, UK

^f The Institute for Fiscal Studies, 7 Ridgmount Street, London, WC1E 7AE, UK

^g Department of Public Health and Policy, University of Liverpool, Liverpool, UK

ARTICLE INFO

Keywords:

Air pollution
Pollen
Data linkage
Educational attainment
Asthma
Seasonal allergic rhinitis

ABSTRACT

Introduction: There is some evidence that exam results are worse when students are acutely exposed to air pollution. Studies investigating the association between air pollution and academic attainment have been constrained by small sample sizes.

Methods: Cross sectional educational attainment data (2009–2015) from students aged 15–16 years in Cardiff, Wales were linked to primary health care data, modelled air pollution and measured pollen data, and analysed using multilevel linear regression models. Annual cohort, school and individual level confounders were adjusted for in single and multi-pollutant/pollen models. We stratified by treatment of asthma and/or Seasonal Allergic Rhinitis (SAR).

Results: A unit ($10\mu\text{g}/\text{m}^3$) increase of short-term exposure to NO_2 was associated with 0.044 (95% CI: -0.079 , -0.008) reduction of standardised Capped Point Score (CPS) after adjusting for individual and household risk factors for 18,241 students. This association remained statistically significant after controlling for other pollutants and pollen. There was no association of $\text{PM}_{2.5}$, O_3 , or Pollen with standardised CPS remaining after adjustment. We found no evidence that treatment for asthma or SAR modified the observed NO_2 effect on educational attainment.

Conclusion: Our study showed that short-term exposure to traffic-related air pollution, specifically NO_2 , was associated with detrimental educational attainment for students aged 15–16. Longitudinal investigations in different settings are required to confirm this possible impact and further work may uncover the long-term economic implications, and degree to which impacts are cumulative and permanent.

1. Introduction

The adverse effects of exposure to air pollution are a global public health concern in both developing and developed nations (Zhang et al., 2018). In the UK, the annual cost of the adverse effects of air pollution on human health is estimated to be about £15 billion (Department for Environment Food and Rural Affairs (DEFRA), 2010). Children and young people are particularly vulnerable to the effects of air pollution

(Currie et al., 2013) because of its impact on physical and mental development which can cause health implications across the lifespan (Guerreiro et al., 2016). Detrimental impacts from exposure to air pollution have been reported for early life health outcomes such as pregnancy outcomes (Rogers and Dunlop, 2006), lung development and function (Portnov et al., 2009), the central nervous system (Block and Calderón-Garcidueñas, 2009), life expectancy at birth, and infant mortality (Fotourehchi, 2016). Furthermore, air pollution has also been

* Corresponding author.

E-mail address: Sarah.Rodgers@liverpool.ac.uk (S.E. Rodgers).

<https://doi.org/10.1016/j.healthplace.2020.102355>

Received 20 January 2020; Received in revised form 2 May 2020; Accepted 6 May 2020

Available online 12 May 2020

1353-8292/© 2020 The Authors. Published by Elsevier Ltd. This is an open access article under the CC BY license (<http://creativecommons.org/licenses/by/4.0/>).

reported to have adverse effects on mental development (Guxens and Sunyer, 2012), language development (Calderón-Garcidueñas et al., 2008), attention and sensory perception (Wang et al., 2009). Higher concentrations of NO₂ and PM_{2.5} at the home location are thought to have both acute and irreversible effects on childhood cognition (Currie et al., 2014). These early life health outcomes are also related to long-term outcomes including; labour force participation, productivity (Hanna and Oliva, 2015), earnings (Currie et al., 2013) and poorer wellbeing and mental health.

Air pollution not only impacts on physical and mental development in childhood but also exacerbates respiratory conditions like asthma and Seasonal Allergic Rhinitis (SAR), more commonly referred to as hay fever. Hay fever is the most common chronic condition in children (Jáuregui et al., 2009) and is most prevalent among school students (Skoner, 2001). There is increasing evidence that air pollutants such as ozone (O₃) may enhance the allergenicity of pollen, which in turn may impact cognitive development (Beck et al., 2013; Sturdy et al., 2012).

While we acknowledge there are mechanisms acting over the longer term causing air pollution to make permanent changes (Calderón-Garcidueñas et al., 2011), in this paper we focused on investigating the short-term effects of lower levels of air pollution. A plausible mechanism includes, interruption to learning/cognition due to asthma/hayfever related illness, resulting in a detrimental effect on educational outcomes. Air pollution has a negative impact on cognitive ability, including forgetfulness, inattentiveness and careless errors (Sunyer et al., 2017) which are important skills used in academic learning and examinations. Furthermore, exposure to air pollution has been negatively associated with school absences (Currie et al., 2009). In Israel, a longitudinal study of 71,383 students reported that high levels of PM_{2.5} were negatively associated with exam results (Lavy and Roth, 2014). Children with asthma (Ruijsbroek et al., 2015) and/or hay fever (Bensnes, 2016) have been found to have poorer educational outcomes. To our knowledge, the combined effect of the modification of air pollution on school performance by asthma or SAR, has not been investigated previously, possibly due to a lack of data linkage across these different domains.

In this study, the precision of the spatiotemporal data linkage is novel due to using high spatial resolution air pollution estimates modelled with a high degree of accuracy for specific periods, tailored to the timing of the outcome measures. We have linked air pollution estimates with temporally adjacent routinely collected health and education outcomes for each student. Routinely collected data are those that are collected for purposes other than research or without a specific research question (Benchimol et al., 2015). We used these data in a temporal investigation to explore whether acute exposure to air pollution had an impact on educational outcomes, and if children treated for Asthma/SAR were impacted to a greater or lesser extent. Previous studies have investigated the effect of air pollution on cognition by collecting data from participants enrolled in small studies (Freire et al., 2010); however, these studies have been restricted to small numbers of participants. Another study used repeated outcome measures from a birth cohort and linked these to a census tract averaged air pollution risk measure at a single time point (Grineski et al., 2020). Our study used a city-wide cohort of all students who sat General Certificate of Secondary Education (GCSE) examinations as a proxy for cognition. These examinations are taken by most students at the end of compulsory schooling in England, Wales, and Northern Ireland.

Our overarching aim was to determine the acute impact of air pollution on educational attainment by investigating how the relationship between short-term exposure to air pollution and GCSE results varied over time. CORTEX was a repeated cross-sectional retrospective data linkage study with two principal research questions:

1. Is exposure to air pollution in the term prior to GCSE examinations negatively associated with exam performance?

2. For children treated for SAR and/or Asthma, is exposure to air pollution in the term prior to GCSE examinations negatively associated with exam performance?

2. Methods

We used routinely collected data held in the SAIL Databank to answer our research questions. We calculated multiple location, daily exposures to air pollution for each student. We linked these exposures to students being actively treated for asthma or SAR, and their educational attainment score. A detailed methodology was previously documented (Mizen et al., 2018).

2.1. Study area

Cardiff has a population of 346,100 and is located on the south coast of Wales, in a maritime temperate climate with a prevailing south westerly wind. There is some industry, including steel manufacturing, but it is not a particularly polluted city. Current WHO guidelines set to protect the public from health effects of pollution stipulate that the annual city mean should not exceed 40 µg/m³ for NO₂ (World Health Organization, 2018). Cardiff is representative of a number of small cities throughout the world whose populations experience comparatively lower level exposure to pollutants.

We used the Secure Anonymised Information Linkage (SAIL) Databank to retrieve education data for all students in Key Stage Four (15–16 years of age) who attended state secondary schools and linked them with their environmental and primary health care data. Our inclusion criteria included students in Key Stage Four who: studied in a state school in Cardiff (23 schools); sat the General Certificate of Secondary Education (GCSE) examinations during 2009–2015; lived in Cardiff; and were registered with a General Practitioner (GP, primary care physician) in Wales during the same period.

The SAIL Databank contains anonymised longitudinal, routinely collected, health, social, environmental, and education data on the Welsh population (Lyons et al., 2009). This infrastructure enabled us to bring together individual-level pollution and pollen exposures, and health and educational outcomes for six years. SAIL also contains the Welsh Demographics Service (WDS) dataset, a population register, which includes home address histories provided by patients registered with a GP in Wales, a service that is free at the point of care in the UK. Using the home address recorded in the WDS and school information in the National Pupil Dataset (NPD), we were able to link air pollution and pollen data at both home and school locations to tailor exposures for individual students.

2.2. Educational attainment

We obtained a continuous measure of educational attainment, derived from GCSE examination scores from the National Pupil Database (NPD) for Wales (2009–2015). Each student took their exams during May and June at age 15–16 years in their final year of mandatory schooling in the UK; although the exact date of the examination period varied between years. Their GCSE examination scores were transformed into a Capped Points Plus score (CPS), a continuous measure of attainment which is derived from a student's best eight subjects including Mathematics, and English Language or Welsh as a first language. We standardised the CPS using the available mean within each exam-year cohort to create z-scores. Thereby removing discrepancies due to differences in examination papers in different years.

2.3. Air pollution and pollen (aeroallergen) exposure

Hourly ambient concentration of fine particulate matters that have a diameter of less than 2.5 µm (PM_{2.5}), nitrogen dioxide (NO₂), and ozone (O₃) were modelled by the Atmospheric Dispersion Modelling System

(ADMS) Urban model (Carruthers et al., 1994) in 20 m spatial resolution for Cardiff city during the study period (2009–2015). Fig. 1 shows the spatial variation of modelled NO₂ levels across Cardiff for 2015. Appendix 1 documents spatial variation across Cardiff for modelled values of NO₂, PM_{2.5} and O₃ from 2009 to 2015. An indication of model accuracy is provided by comparison of modelled annual average NO₂ concentrations with measurements over a five-year period from around 50 diffusion tubes located across Cardiff. For each year these typically showed a fractional bias over all sites of about 0.05 corresponding to an underestimation of less than 2 µg/m³. Comparisons with measurements from one automatic reference monitor on Cardiff for NO₂ and PM showed a similar level of performance. We would expect the model predictions for O₃ to be similarly accurate given the model predictions of O₃ are based on measured rural values and the variations in O₃ across cities are strongly anti-correlated with NO₂ concentrations.

Hourly pollution levels at the home and school location were combined to create a daily exposure profile for each student for PM_{2.5}, NO₂ and O₃ (Rodgers et al., 2009). We assumed the student was at school during school time (9am–3pm on weekdays in school term); and at home during off-school time (3pm–9am on weekdays in school term and whole day for weekend, bank holidays and school holidays). Exposure was characterised by a weighted average for the pre-examination period (from the start of the summer term, generally 1st April, to the day before their first exam) and for the duration of their examination period (first exam to last exam) (Mizen et al., 2018). Fig. 2 highlights temporal variation of the weighted averages throughout the study period.

Time series data for a single pollen measuring site in Cardiff was available from the European Allergy Network for 2006–2010 (“EAN - European Aeroallergen Network - Home,” 2019) and from the UK Met Office for 2011–2015 (“Weather and climate change - Met Office,” 2019). Exposure to pollen was characterised by total pollen counts for all pollen sources combined (tree, grass and weed) for each of the pre-examination and examination time periods.

2.4. Other risk factors

The definition of an asthma patient varies greatly in the literature

[42]. We selected students who were ever diagnosed with or treated for asthma or SAR in the year before the summer examination period. The examination period was defined using the Welsh Joint Education Committee (WJEC) June series exam board timetable. Case definitions for asthma were based on those used in the Wales Asthma Observatory (Al Sallakh, 2018). Asthma and SAR diagnosis and treatment were queried from the Welsh Longitudinal General Practice (WLGP) dataset in the SAIL Databank. Students who were treated for asthma or SAR were flagged from Read codes in the primary care dataset (Mizen et al., 2018).

We considered small-area level and household level measures of deprivation as potential confounders. At the small area level (Lower Super Output Area, LSOA ~1500 people) we used the Welsh Index of Multiple Deprivation (WIMD). Eligibility for Free School Meals (FSM) was a household level measure of deprivation, recorded as a part of the NPD. We also included Special Educational Needs (SEN) as recorded in the NPD, and sex, recorded in the WDS, as confounders. The SEN is a derived binary variable indicating whether the student is recorded as having a condition that could affect their ability to learn.

2.5. Statistical analysis

We applied multilevel linear regression analyses to assess the impact of selected pollutants/pollen level on educational attainment, accounting for similarities among students who went to the same school and were in the same exam year. We used single pollutant/pollen models to assess whether temporal associations between each pollutant/pollen and educational attainment were observable, before adjusting for major individual and household risk factors. Where we detected associations, we applied multipollutant models to adjust for other pollutant(s)/pollen. We stratified the analyses by treatment for asthma and SAR to assess effect modification by health condition.

We accounted for clustering within households at the cohort level because siblings (except multiple births) appeared in different cohorts. Twins clustered within a yearly cohort, however the number of twins within each cohort was small (<3% of the study population) and we decided it was unnecessary to account for clustering within households within an exam-year cohort. We conducted two separate sensitivity

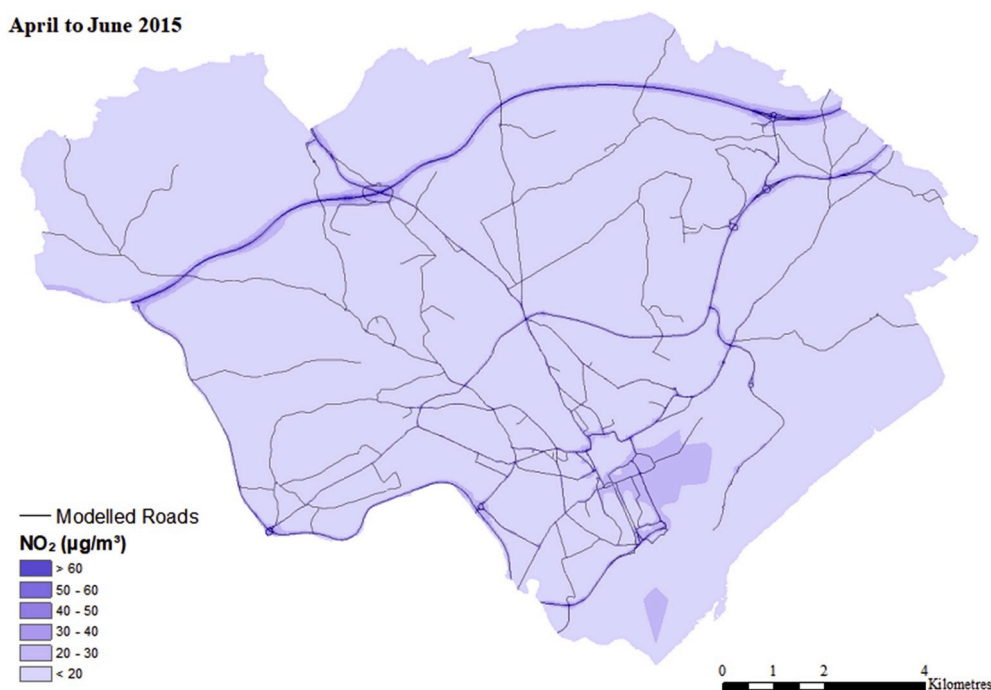


Fig. 1. Spatial distribution of the annual average NO₂ concentration for Cardiff, UK (2015). Summary statistics for 2015: 13.23µg/m³, 10.96 µg/m³, 18.74 µg/m³ (Median, 10th and 90th percentiles). All pollutants were estimated at a 20m spatial resolution. Yearly summary statistics are in the Appendix.

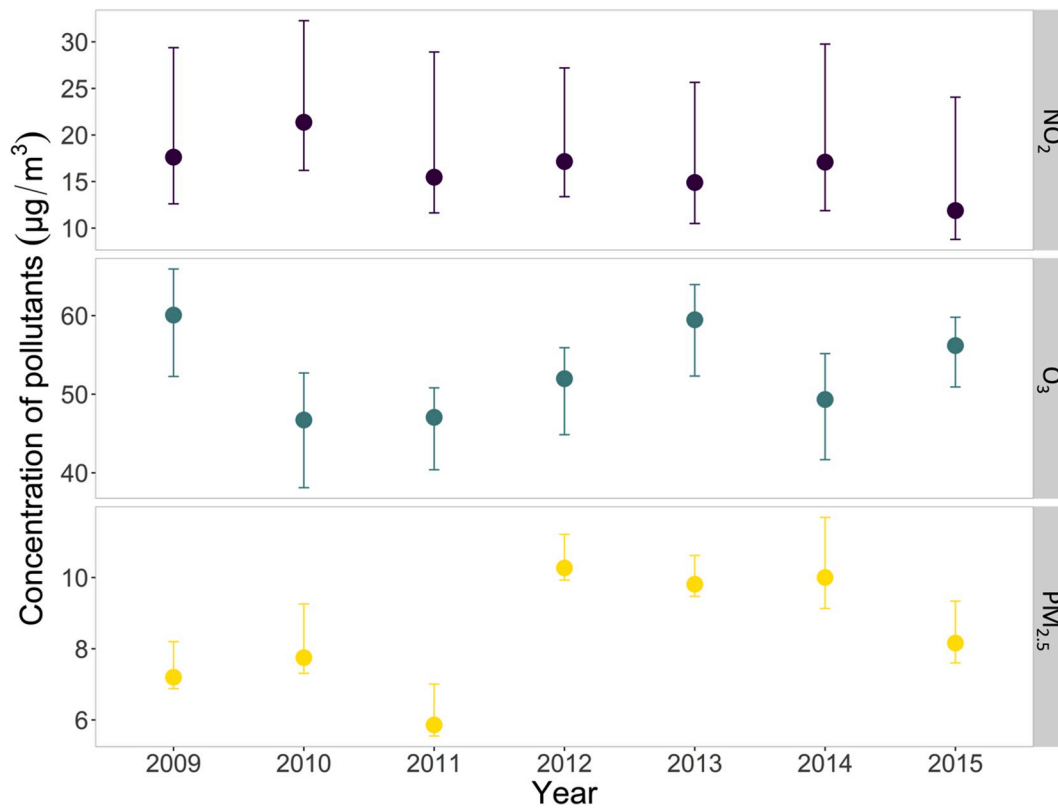


Fig. 2. Min, Max and Mean of annual personal exposure concentration for study students (n=18,241) from 2009-2015. Exposure is based on air pollution estimates weighted by time spent at home, and school from 9am-3pm on weekdays in term time.

analyses. First, we combined three pollutant/pollen models to adjust for correlated pollutants/pollen. Second, we changed our assumption of student location from school to home for the 2 h immediately after the end of the school day (3–5pm). This helped us to assess the effect on exposure of assuming that students remained at school for clubs after hours.

We conducted all analyses in R version 3.5.0 within the privacy protecting secure SAIL Databank environment. Our study was approved by an independent Information Governance Review Panel (IGRP) application (approval number 0561).

3. Results

We analysed 18,241 students at age 15–16 years old who lived and studied in Cardiff and undertook their GCSE examinations between 2009 and 2015. Students were an average of 15.71 years old (SD 0.45). For each yearly exam cohort, the final z-score transformation of CPS had a mean of zero and a standard deviation of one. Across the seven cohorts, the CPS ranged from –3.7 to 2.2. Among the study population, 1505 students (8%) were treated for asthma and 2725 (15%) were treated for SAR (Table 1). Almost a fifth of the population were treated for either Asthma or SAR (n = 3595); 80% were treated for neither condition (n = 14,645); and 3% were treated for both conditions (n = 634). There were 3616 students (20%) with Special Educational Needs, and 2860 students (16%) were eligible for Free School Meals. Greater proportions of students were distributed in the least and most deprived quintiles (WIMD 1, 30%; WIMD 5, 38%) compared to the whole of Wales. These characteristics did not vary considerably between exam years.

In our primary analyses of single pollutants, a unit (10µg/m3) increase of NO₂ was associated with a 0.044 (95% CI: –0.079, –0.008%) reduction of standardised CPS score after adjusting for sex, household and neighbourhood deprivation, and special educational needs. We found a unit increase of PM_{2.5} (0.074) and pollen (0.015) were

Table 1

Characteristics of the study population (n = 18,241).

Demographics	n	%
Male	9337	51%
Female	8904	49%
Treated for Asthma	1505	8%
Treated for SAR	2725	15%
Treated for both Asthma and SAR	634	3%
Treated for neither Asthma or SAR	14,645	80%
Treated for either Asthma or SAR	3596	20%
Eligible for Free School Meals	2860	16%
Special Educational Needs	3616	20%
WIMD 1 (most deprived)	5454	30%
WIMD 2	2181	12%
WIMD 3	1549	8%
WIMD 4	2142	12%
WIMD 5 (least deprived)	6915	38%

SAR, Seasonal Allergic Rhinitis; WIMD, Welsh Index of Multiple Deprivation.

associated with a higher standardised CPS score (0.074, 95%CI: 0.002, 0.146; and 0.015, 95% CI: 0.002, 0.027) (Table 2). The association between NO₂ and standardised CPS score remained after adjustment for PM_{2.5} and pollen in the multipollutant model. The positive impact of PM_{2.5} and pollen on standardised CPS score did not remain having adjusted for PM_{2.5} or pollen (Fig. 3).

Stratification by treatment suggested NO₂ impacts were statistically significant only for students without asthma or SAR treatment. The positive associations with the standardised CPS score (i.e. high exposure to pollen was associated with higher exam score) observed in the single model, among students without asthma or SAR treatment, did not remain when additionally adjusted for NO₂ or PM_{2.5} (Table 3).

We initially assumed the student would be at home 3–5pm. We observed little difference in the beta coefficients and confidence intervals when we re-ran our single pollutant models assuming the student

Table 2

Change (95% CI) in educational attainment (standardised GCSE CPS) associated with a unit increase in air pollution and pollen exposure and other risk factors for students at age 15–16 years in Cardiff 2009–2015, single pollutant/pollen model (n = 18,241).

	NO ₂ model	PM _{2.5} model	O ₃ model	Pollen model
NO ₂ , per 10 µg/m ³	−0.044 (−0.079, −0.008)	−	−	−
PM _{2.5} , per 10 µg/m ³	−	0.074 (0.002, 0.146)	−	−
O ₃ , per 10 µg/m ³	−	−	0.004 (−0.017, 0.024)	−
Pollen, 10 ^{−5} grains/m ³	−	−	−	0.015 (0.002, 0.027)
Female (vs Male)	0.096 (0.073, 0.118)	0.096 (0.074, 0.119)	0.096 (0.073, 0.118)	0.096 (0.074, 0.119)
Eligibility for Free School Meal	−0.360 (−0.393, −0.326)	−0.360 (−0.393, −0.326)	−0.360 (−0.393, −0.326)	−0.360 (−0.393, −0.326)
Special Education Needs (Yes vs No)	−1.000 (−1.029, −0.971)	−1.000 (−1.029, −0.970)	−0.999 (−1.028, −0.969)	−1.000 (−1.029, −0.970)
Free School Meals at school	−0.001 (−0.001, 0.001)	−0.001 (−0.001, 0.001)	−0.001 (−0.001, 0.000)	−0.001 (−0.001, 0.001)
Neighbourhood deprivation Q2 ^a	0.095 (0.055, 0.134)	0.093 (0.054, 0.133)	0.094 (0.054, 0.134)	0.093 (0.053, 0.133)
Neighbourhood deprivation Q3 ^a	0.205 (0.160, 0.251)	0.202 (0.156, 0.248)	0.203 (0.157, 0.248)	0.202 (0.156, 0.248)
Neighbourhood deprivation Q4 ^a	0.224 (0.181, 0.267)	0.223 (0.180, 0.266)	0.223 (0.180, 0.266)	0.223 (0.180, 0.266)
Neighbourhood deprivation Q5 ^a	0.395 (0.358, 0.433)	0.395 (0.358, 0.432)	0.395 (0.357, 0.432)	0.395 (0.357, 0.432)

^a Against neighbourhood deprivation quintile group 1, Q1 (the most deprived group). Quintile 5 (Q5) is the least deprived group.

remained at school (for after school clubs) from 3 to 5pm (data not shown).

4. Discussion

4.1. Main findings

Our study suggests that short-term exposure to NO₂ levels that are below current policy thresholds (World Health Organization, 2018) have a detrimental impact on educational attainment at the age 15–16 years. Specifically, we found a 0.044 reduction of standardised CPS score per 10µg/m³ increase of NO₂ exposure level. Although this reduction is modest, Cardiff is a moderate sized city (population 300,000) and is not considered to be particularly polluted compared to other cities of its size. This relationship was not found for the other pollutants (PM_{2.5} and O₃) or pollen. We report a significant, positive association between exposure to pollen and CPS score. With respect to the impact of exposure to pollen on educational attainment for children treated for SAR and/or asthma, we found exposure to air pollution and/or pollen to have no effect on exam performance.

4.2. Comparison with other studies

Our results suggest that short-term exposure to NO₂ has a negative impact on examination scores. This supports findings where long-term

exposure to traffic related air pollution (including NO₂) during development had detrimental effects on cognitive development (Sunyer et al., 2015). We report no significant association between PM_{2.5} and examination scores. This is in contrast to a panel study estimating the short-term effect of air pollution exposure on standardised test scores among Israeli high school examinations that found PM_{2.5} to be negatively associated with educational attainment (Lavy and Roth, 2014) with a larger negative impact on groups with higher asthma rates. We found no association between short-term exposure to O₃ and educational attainment, although evidence suggests that long term exposure to O₃ is damaging for cognitive development (Chen and Schwartz, 2009).

Our results suggest that educational outcomes for children not treated for SAR and/or asthma are positively associated with exposure to pollen. However, the effect size of this association is minute. With respect to the impact of exposure to pollen on educational attainment for children treated for SAR and/or asthma, our results echo studies that have reported SAR having no effect on cognition in adolescents, including exam performance (Blais et al., 2018). Another study that reported a negative association of SAR with school performance (Kim et al., 2017) used self-reported data and may have captured more cases of SAR than our study. In our study, it may be that only the more severe cases of SAR are recorded in the primary care data because over-the-counter treatments are available. On the other hand, free prescriptions in Wales mean that all children are eligible for free treatment for SAR from their doctor.

4.3. Strengths and limitations

This is the first study, to our best knowledge, to investigate air pollution impact on educational attainment using routinely collected data source with high spatial resolution air pollution exposure data tailored to the temporal focus of this study. We investigated associations between short-term exposure to ambient air pollution and educational attainment, as a proxy for cognition. We linked routinely collected educational and health data for 18,241 students aged 15–16 years in Cardiff with air pollution data modelled at 20m resolution aggregated into precise revision and examination periods. We included exposure to air pollution at home and school location for all students.

A strength of this study is the number of students (18,241) in the retrospective cohorts for whom we linked modelled pollution data at both their home and school locations. We modelled exposure at home and school, reflecting not just the pollutants but combining these into a dual location daily exposure using the high spatial resolution ADMS model. Furthermore, we linked these environmental exposures with individual health data to explore the impact of health conditions. This study has shown it is possible to link multiple location air pollution estimates, transform them into dual location exposures, and then link to individual-level health outcomes in an anonymised data safe haven to contribute to filling an important evidence gap.

A limitation of the study was that exposures were estimated by modelling, rather than continuous personal exposure monitoring. However, this was justified by the size of our study. Population based cohort studies need to use modelling because personal, measured exposures are not feasible at scale. Another limitation was that, unlike the air pollution data, the pollen data were not spatially or temporally resolved. Pollen modelling is less advanced in comparison to air pollution modelling (Desjardins et al., 2019). Furthermore, we did not consider the indoor environment (Sunyer et al., 2015), such as the smoking status of the students or their cohabitants.

Outcomes were measured by CPS. English and Maths are integrated into the score and we were not able to specify which other subjects were examined. Furthermore, our results do not necessarily support the assertion that air pollution impacts on cognition, because it is not clear how CPS is associated with cognition measured by standard instruments. However, poorer examination results have implications for future

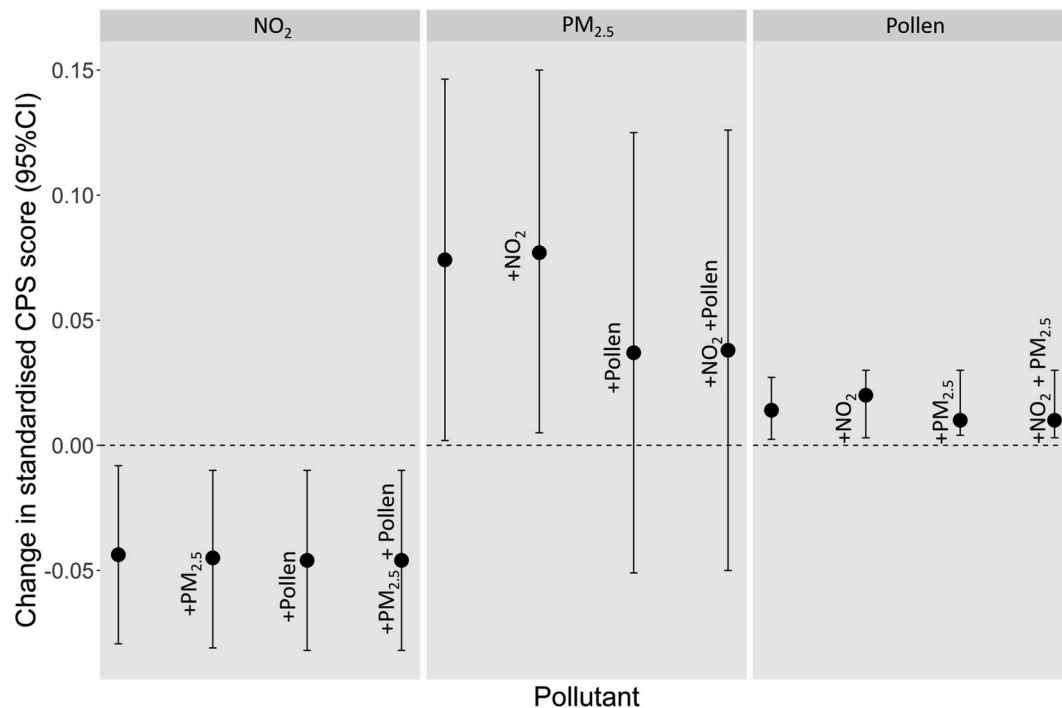


Fig. 3. Change in standardised CPS score (95% CI) per 10mg/m³ before and after adjustment for other pollutants and/or pollen. All models were adjusted for potential confounders: socioeconomic status (WIMD), Free school meal eligibility, special education needs, and sex.

Table 3

Change (95%CI) in educational attainment (standardised GCSE CPS) associated with unit increase^a in air pollution and pollen exposure by asthma and SAR treatment status.

	Treatment for asthma		Treatment for SAR	
	Yes	No	Yes	No
NO ₂	-0.040 (-0.161, 0.081)	-0.041 (-0.078, -0.004)	-0.015 (-0.100, 0.071)	-0.048 (-0.087, -0.009)
NO ₂ adjusted for PM _{2.5}	-0.043 (-0.163, 0.078)	-0.043 (-0.080, -0.005)	-0.015 (-0.101, 0.070)	-0.049 (-0.088, -0.010)
NO ₂ adjusted for pollen	-0.042 (-0.163, 0.080)	-0.044 (-0.081, -0.006)	-0.016 (0.101, 0.071)	-0.050 (-0.089, -0.010)
NO ₂ adjusted for PM _{2.5} and pollen	-0.042 (-0.163, 0.078)	-0.044 (-0.081, -0.007)	-0.015 (-0.010, 0.007)	-0.050 (-0.089, -0.011)
PM _{2.5}	0.189 (-0.062, 0.439)	0.067 (-0.009, 0.141)	0.143 (-0.040, 0.325)	0.064 (-0.015, 0.142)
PM _{2.5} adjusted for NO ₂	0.191 (-0.060, 0.441)	0.070 (-0.006, 0.145)	0.143 (-0.039, 0.326)	0.067 (-0.011, 0.146)
PM _{2.5} adjusted for Pollen	0.210 (-0.094, 0.511)	0.020 (-0.071, 0.112)	0.183 (-0.042, 0.407)	0.013 (-0.082, 0.108)
PM _{2.5} adjusted for NO ₂ and pollen	0.210 (-0.093, 0.512)	0.022 (-0.070, 0.113)	0.182 (-0.042, 0.406)	0.015 (-0.081, 0.110)
O ₃	-0.007 (-0.078, 0.064)	0.004 (-0.017, 0.026)	-0.031 (-0.082, 0.021)	0.010 (-0.012, 0.033)
O ₃ adjusted or NO ₂	-0.025 (-0.107, 0.057)	-0.009 (-0.034, 0.015)	-0.048 (-0.108, 0.012)	-0.004 (-0.030, 0.021)
O ₃ adjusted for PM _{2.5}	-0.015 (-0.087, 0.057)	0.001 (-0.021, 0.023)	-0.039 (-0.091, 0.013)	0.007 (-0.016, 0.030)
O ₃ adjusted for Pollen	-0.012 (-0.085, 0.061)	-0.002 (-0.024, 0.021)	-0.034 (-0.087, 0.018)	0.004 (-0.019, 0.027)
Pollen	0.01 (-0.03, 0.06)	0.016 (0.003, 0.029)	0.0006 (-0.003, 0.004)	0.002 (0.0003, 0.003)
Pollen adjusted for NO ₂	0.001 (-0.003, 0.006)	0.002 (0.0004, 0.003)	0.0007 (-0.003, 0.004)	0.002 (-0.0004, 0.003)
Pollen adjusted for PM _{2.5}	-0.0006 (-0.006, 0.005)	0.001 (-0.0002, 0.003)	-0.0012 (-0.005, 0.003)	0.002 (-0.0001, 0.003)
Pollen adjusted for O ₃	0.002 (-0.003, 0.006)	0.002 (0.0003, 0.003)	0.0011 (-0.002, 0.004)	0.002 (0.0002, 0.003)

^a Per 10 µg/m³ for NO₂, PM_{2.5} and O₃, 1000 grains/m³ for Pollen.

education and economic work life benefits (Bensnes, 2016). It was not possible to adjust for curriculum changes, such as changes to the proportional contribution of coursework grades to final subject grades, or temporal changes associated with coursework deadlines. Similarly, it was not possible to identify if students had taken some exams early such as during the November or January examination series. We recommend education results are available on a per subject basis, to allow the examination of the effects of air pollution on specific learning outcome areas in future.

We did not model pollution along a student’s route to school, or at locations where they may have spent their evenings other than at home. We assumed that each student spent their time at only two locations, but, in combination with temporal tailoring, this is likely to have reduced some errors (Park and Kwan, 2017). The high spatial and temporal resolution of the data used in this study has allowed us to more

accurately represent the spatial and temporal patterns of pollution exposure variation to students and their outcome data. We did not include noise pollution data or a proxy thereof. Noise data for Wales are currently modelled using traffic, railway and industrial area data for select regions of the study area at ad-hoc timepoints (Review of strategic noise maps in Wales, 2015). The lack of consistent temporal or spatial coverage of these data meant we were not able to control for the effects of noise pollution from the perspective of the household/individual unit of analysis as used in our study.

A limitation of the routinely collected clinical data is that only those with a GP diagnosis or prescription will be captured. Allergic rhinitis may be self-diagnosed in up to 50% of the population, and over-the-counter medications are commonly used, although this is mitigated by the availability of free prescriptions in Wales since April 1, 2007. However, those with more severe disease, and higher susceptibility to

pollen and pollution, are more likely to be identified.

It is possible that taking over-the-counter antihistamines may have influenced examination outcomes; however, it was not possible to account for that in this study. In addition, dust mites are a common trigger of year-round allergies and asthma, but data about these were not available. Also, students may have been suffering from additional cardio-respiratory conditions or other comorbidities, which were not included in this analysis and could have had an effect on asthma or SAR symptoms and severity or educational attainment.

4.4. Implications

This research suggests that air pollution experienced in the short-term is having a detrimental effect on school student's educational outcomes. It is crucial this is addressed through evidence-based policies and interventions. Consideration needs to be given to innovative ways to reduce the exposure of children to air pollution and ultimately investment needs to be made to change the prevailing cultural and industrial legacies that contribute to high emissions of pollutants. This is particularly important considering that the short-term impacts culminate into longer term exposure and permanent changes even within cities with low to moderate pollution (Sunyer et al., 2015), as well as those with very poor air quality (Calderón-Garcidueñas et al., 2011).

Challenges remain in linking combinations of national and local air quality improvement initiatives to air pollution reductions, however, here we have shown we can integrate socio-demographic, health and environment data to better understand the relationship between lower level exposures to pollutants (Chief Medical Officer, 2017). Our results highlight that the degree of residential area deprivation has a major and consistent impact on educational attainment across all models. Current UK policies to reduce air pollution are focused on economic and overall health improvement (DEFRA, 2020). Our results suggest that future analyses should be based on deprivation levels to improve our insights into the effects of air pollution. This would provide evidence to inform policies that improve air quality for the most deprived populations to reduce health inequalities (Chief Medical Officer, 2017). The postponement of the introduction of the Clean Air Zones in the UK due to the COVID-19 pandemic (The Guardian, 2020) could be an opportunity to include a health inequality assessment in future policy (Whitehead, 2014).

4.5. Future research

Future research should consider exploring urban *and* rural exposures to pollution and it has been noted that O₃ concentrations are often lower in urban areas because it is depleted by NO_x. It may be that different pollutants have different effects depending on their spatial distribution. The effect of pollution on cognition by sex should be explored as males may be more affected by air pollution (Chen et al., 2017).

To complete a robust longitudinal analysis, it would be necessary to expand the geographic area of study to maintain sufficient student numbers at each key stage. Alternatively, because there are no equivalent cognition outcome data for the whole population at earlier ages, we instead recommend developmental and cognition outcome measures are collected from a representative sample using survey instruments following air pollution modelling (Gulliver et al., 2018). High spatial and temporal modelled pollution data are not available routinely for all urban areas, however, we anticipate that these results will prove to be valuable, thereby encouraging additional urban area modelling. We recommend future work include data on emergency hospital admissions and attendances for respiratory conditions, which occurred too infrequently in the current single city study sample. These outcomes are not subject to treatment seeking behaviour. Utilising secondary healthcare data can be used as a measure of condition severity but also highlight temporal flares of conditions and associated temporal changes in air pollutant concentrations. Ultimately, current traffic reductions from the

COVID-19 social isolation measures are likely to have improved air quality in many cities, although simultaneous disruptions to education means using attainment as an outcome is unfeasible.

5. Conclusion

Short-term exposure to NO₂, coincident with revision periods, was negatively associated with educational attainment. We did not find associations with PM_{2.5}, O₃, or pollen. We found no evidence that treatment for asthma or SAR modified the observed NO₂ effect on educational attainment. Further longitudinal investigations are required to understand the complicated relationship between air pollution, pollen, asthma, SAR, and educational attainment.

Ethics & availability of data

This study makes use of anonymised data held in the Secure Anonymised Information Linkage (SAIL) Databank. We would like to acknowledge all the data providers who make anonymised data available for research. The data used in this study are available in the SAIL Databank at Swansea University, Swansea, UK. All proposals to use SAIL data are subject to review by an independent Information Governance Review Panel (IGRP). Before any data can be accessed, approval must be given by the IGRP. The IGRP gives careful consideration to each project to ensure proper and appropriate use of SAIL data. When access has been approved, it is gained through a privacy-protecting safe haven and remote access system referred to as the SAIL Gateway. SAIL has established an application process to be followed by anyone who would like to access data via SAIL. <https://www.saildatabank.com/application-process>.

Author contribution

AM was responsible for writing the paper. All the co-authors made substantial contributions to writing the methods section and editing the whole paper. All authors then read the final version and approved it for submission and publication.

Funding

This study was funded by Chief Scientist Office of Scotland, the Medical Research Council and the Natural Environment Research Council (R8/H12/83/NE/P010660/1).

We acknowledge the support from The Farr Institute @ CIPHER: MR/K006525/1, which is supported by a 10-funder consortium: Arthritis Research UK, the British Heart Foundation, Cancer Research UK, the Economic and Social Research Council, the Engineering and Physical Sciences Research Council, the Medical Research Council, the National Institute of Health Research, the National Institute for Social Care and Health Research (Welsh Assembly Government), the Chief Scientist Office (Scottish Government Health Directorates), the Wellcome Trust, (MRC Grant No: MR/K006525/1). This work was supported by Health Data Research UK (grant ref:NIWA1), which is funded by the UK Medical Research Council, Engineering and Physical Sciences Research Council, Economic and Social Research Council, National Institute for Health Research (England), Chief Scientist Office of the Scottish Government Health and Social Care Directorates, Health and Social Care Research and Development Division (Welsh Government), Public Health Agency (Northern Ireland), British Heart Foundation (BHF) and the Wellcome Trust. This work was also supported by an ESRC award establishing the Administrative Data Research Centre Wales (ES/L007444/1). RF is supported by the Health and Care Research Wales funded National Centre for Population Health and Wellbeing Research.

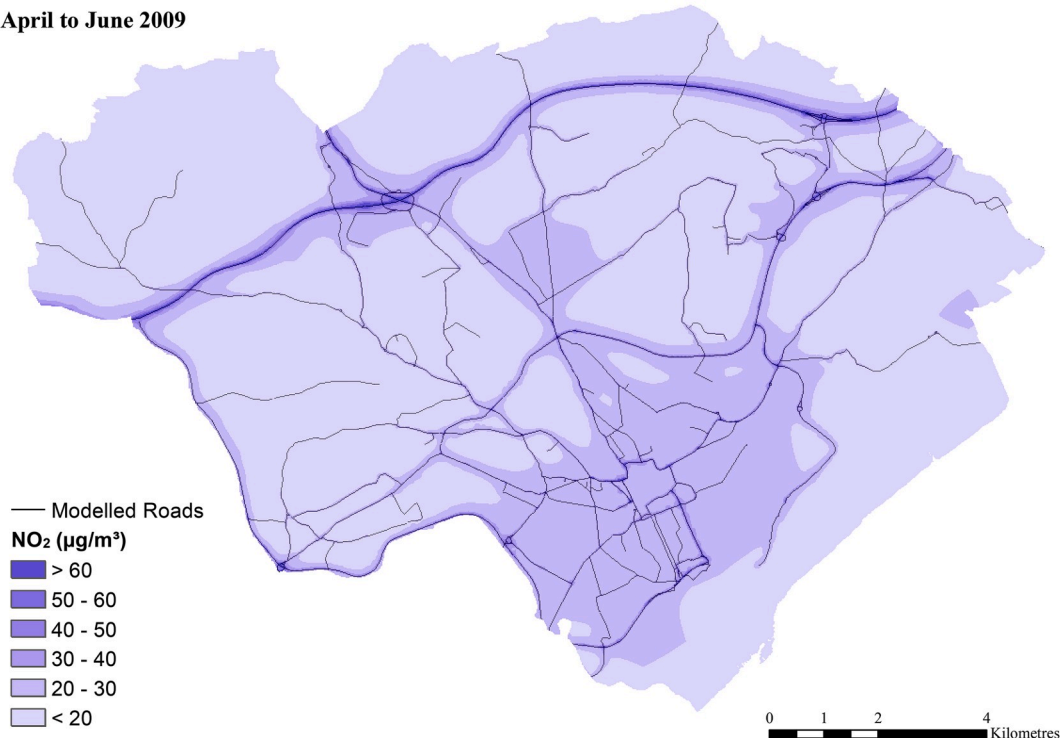
Declaration of competing interest

The authors declare that they have no competing interests.

Appendix 1

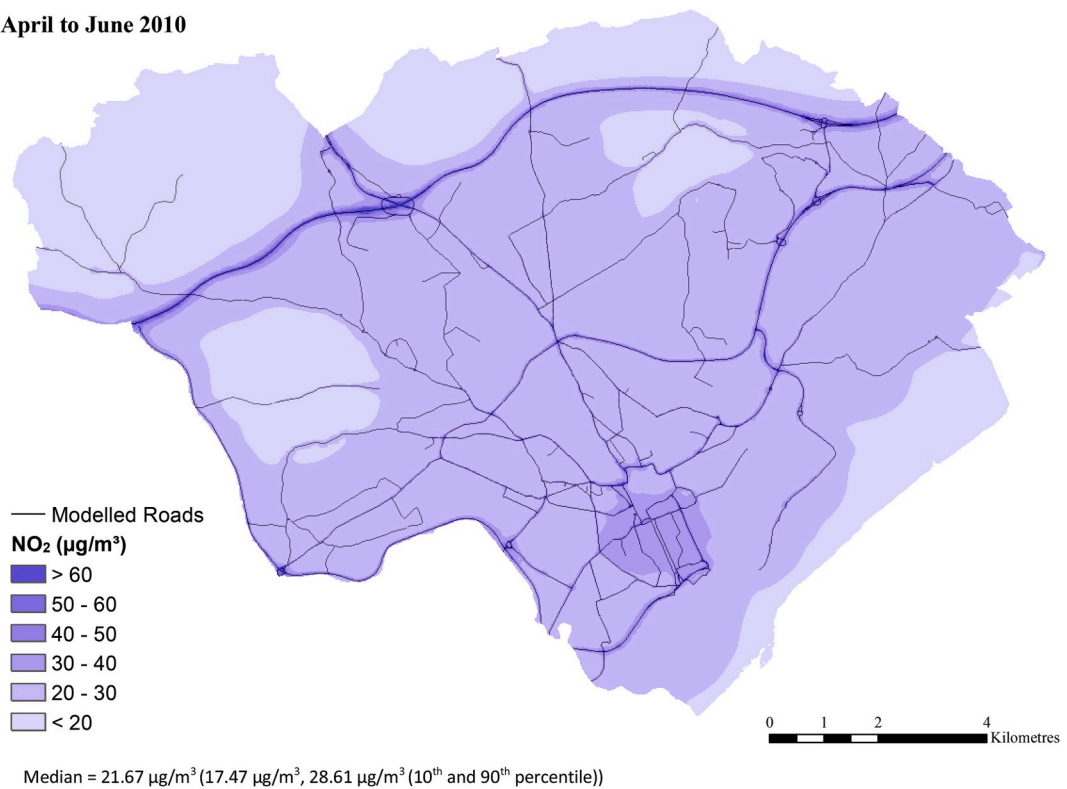
April to June three month average of NO₂ concentrations

April to June 2009

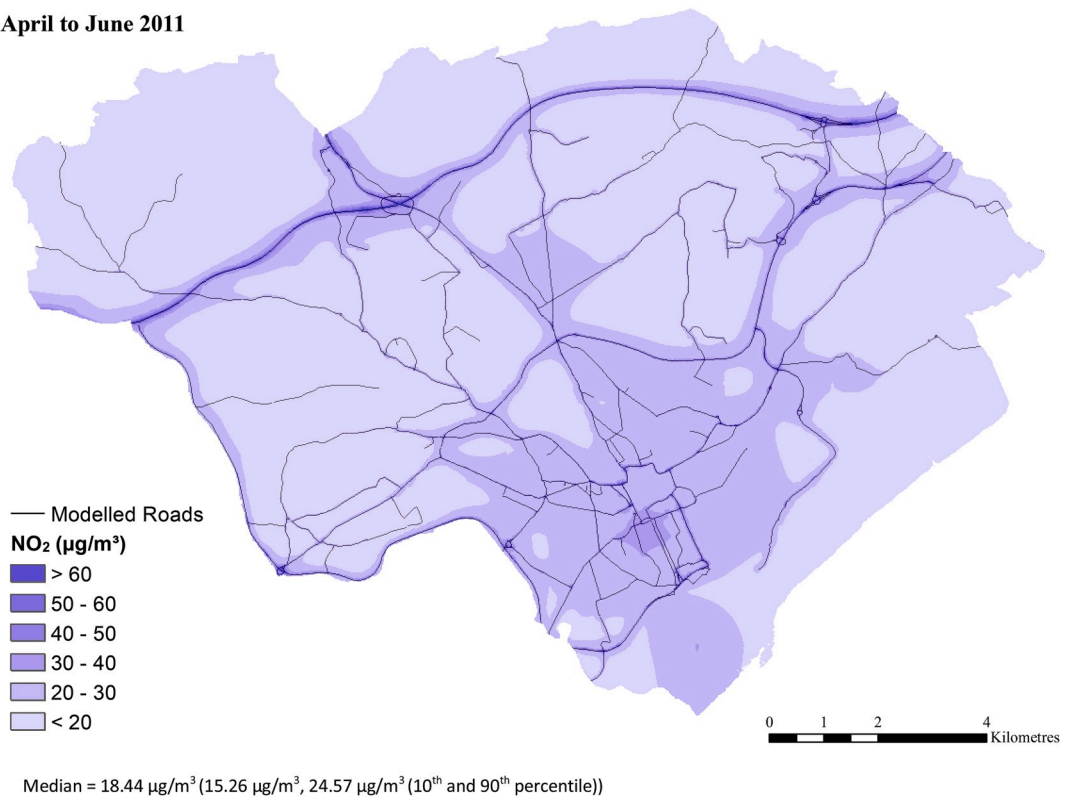


Median = 18.11 µg/m³ (14.09 µg/m³, 25.32 µg/m³ (10th and 90th percentile))

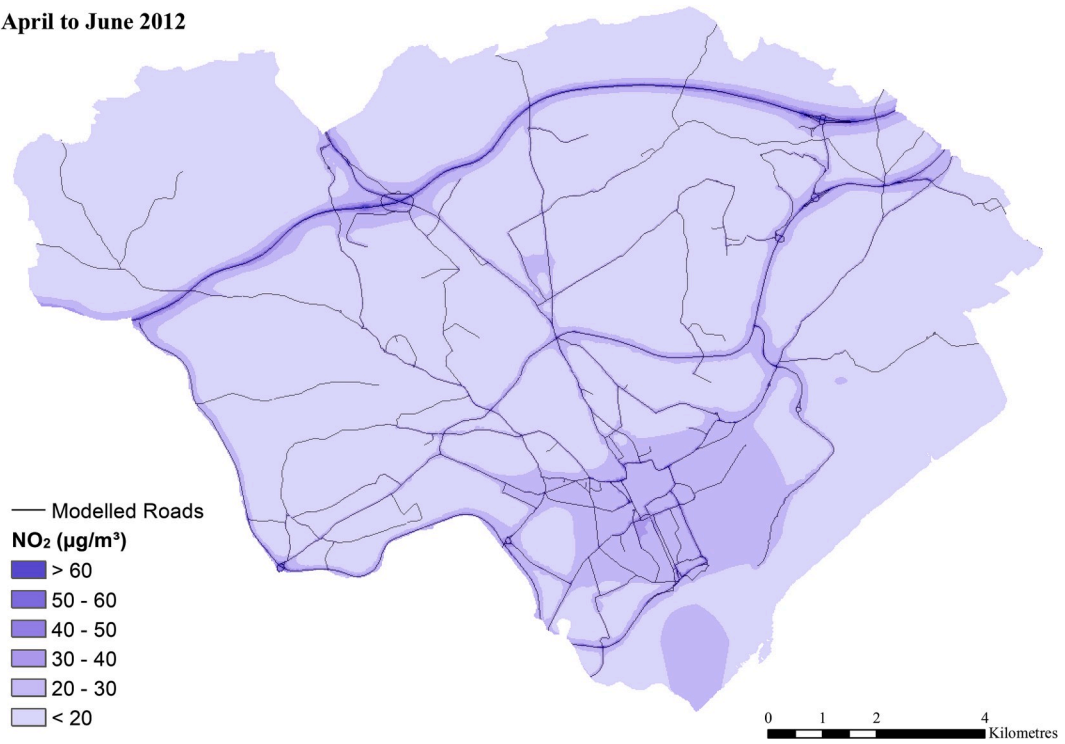
April to June 2010



April to June 2011

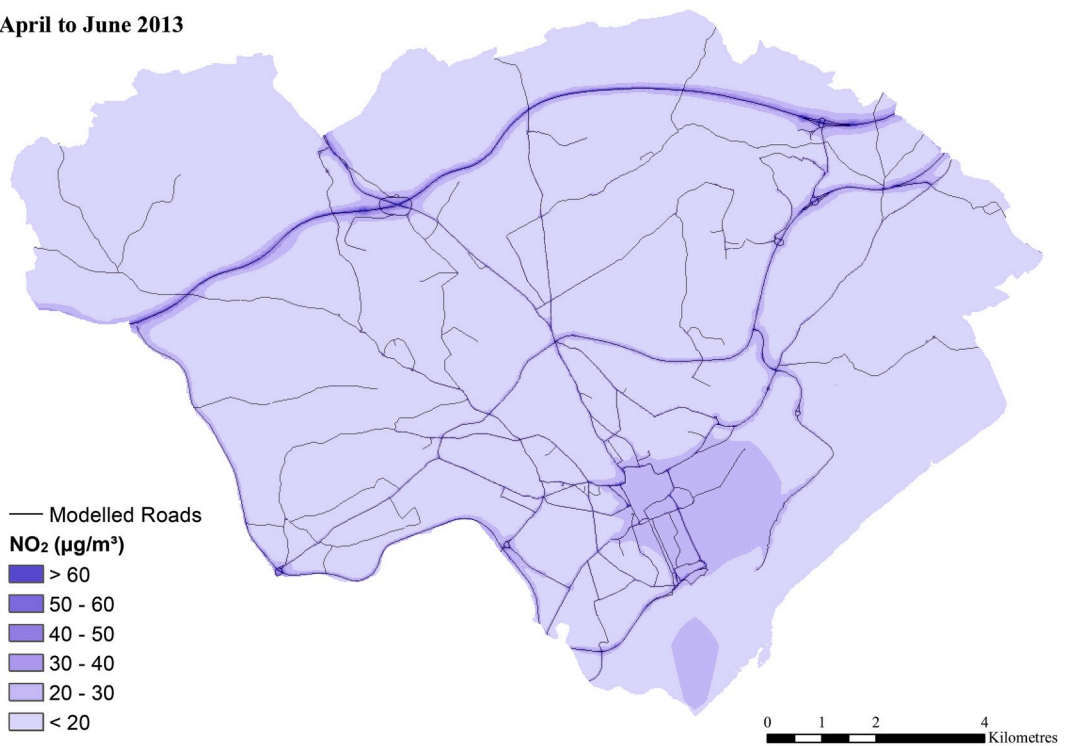


April to June 2012



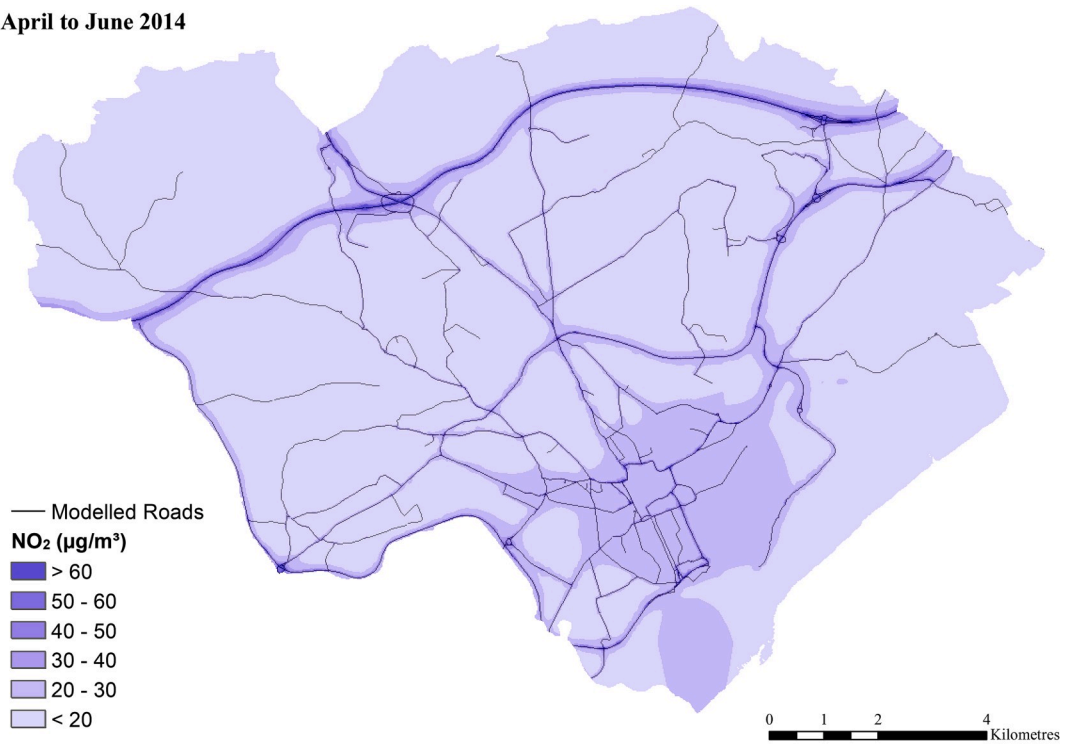
Median = 17.05 $\mu\text{g}/\text{m}^3$ (14.01 $\mu\text{g}/\text{m}^3$, 23.25 $\mu\text{g}/\text{m}^3$ (10th and 90th percentile))

April to June 2013



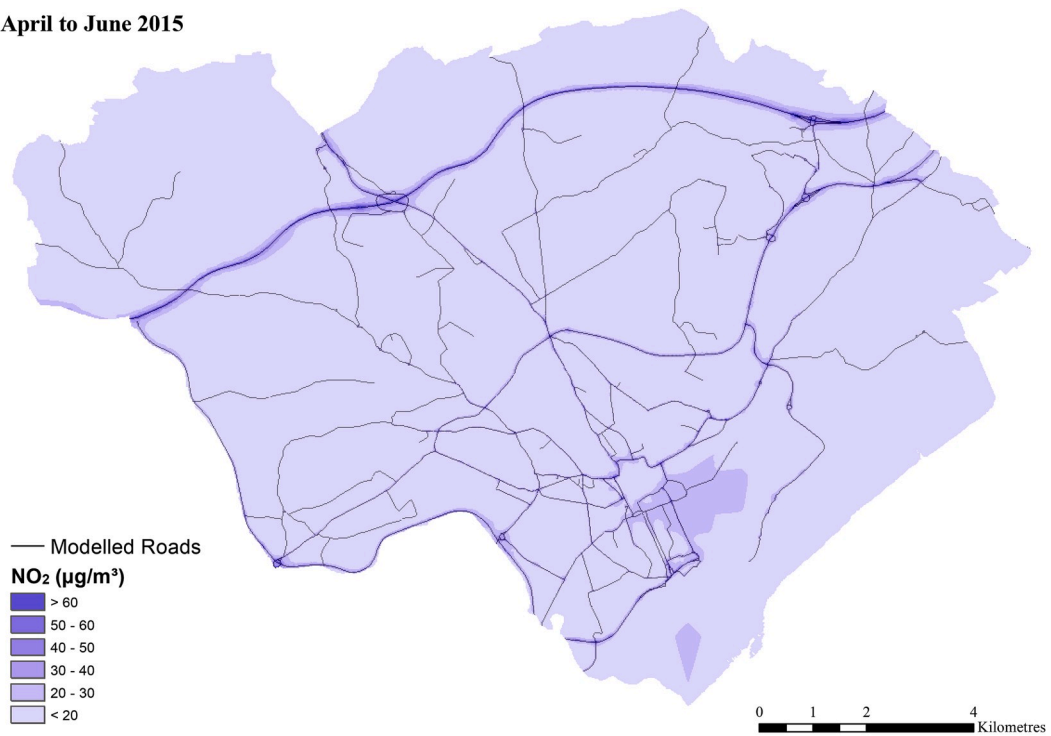
Median = 14.99 $\mu\text{g}/\text{m}^3$ (11.67 $\mu\text{g}/\text{m}^3$, 21.00 $\mu\text{g}/\text{m}^3$ (10th and 90th percentile))

April to June 2014



Median = 16.92 $\mu\text{g}/\text{m}^3$ (13.37 $\mu\text{g}/\text{m}^3$, 23.94 $\mu\text{g}/\text{m}^3$ (10th and 90th percentile))

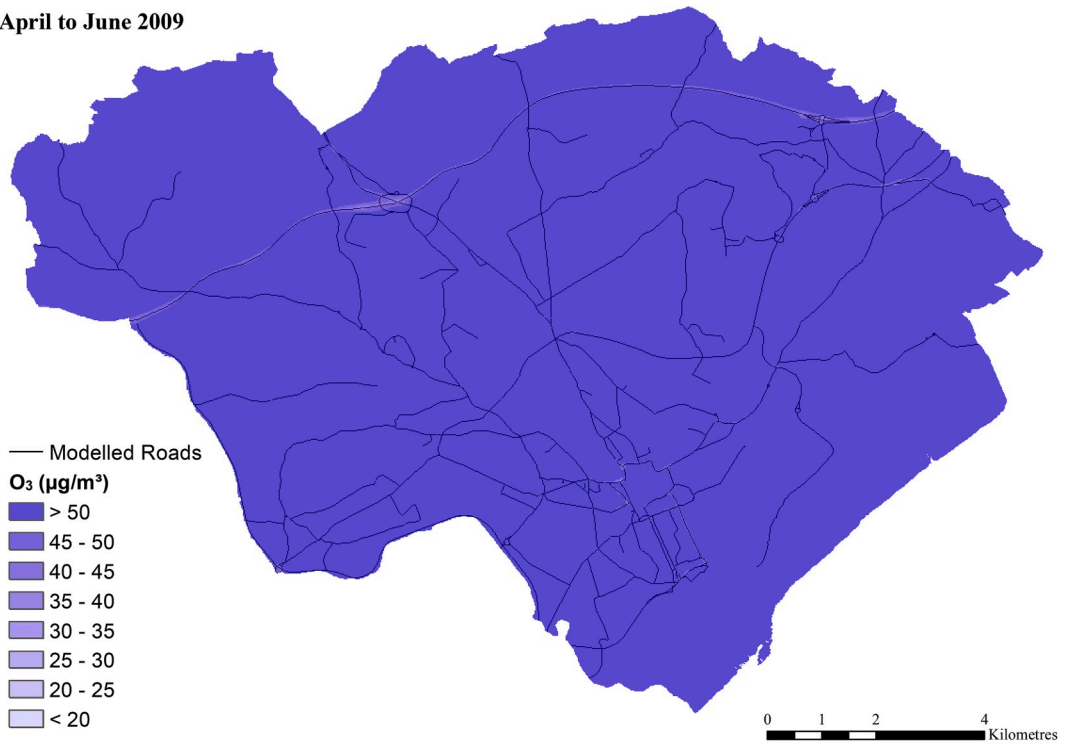
April to June 2015



Median = 13.23 $\mu\text{g}/\text{m}^3$ (10.69 $\mu\text{g}/\text{m}^3$, 18.74 $\mu\text{g}/\text{m}^3$ (10th and 90th percentile))

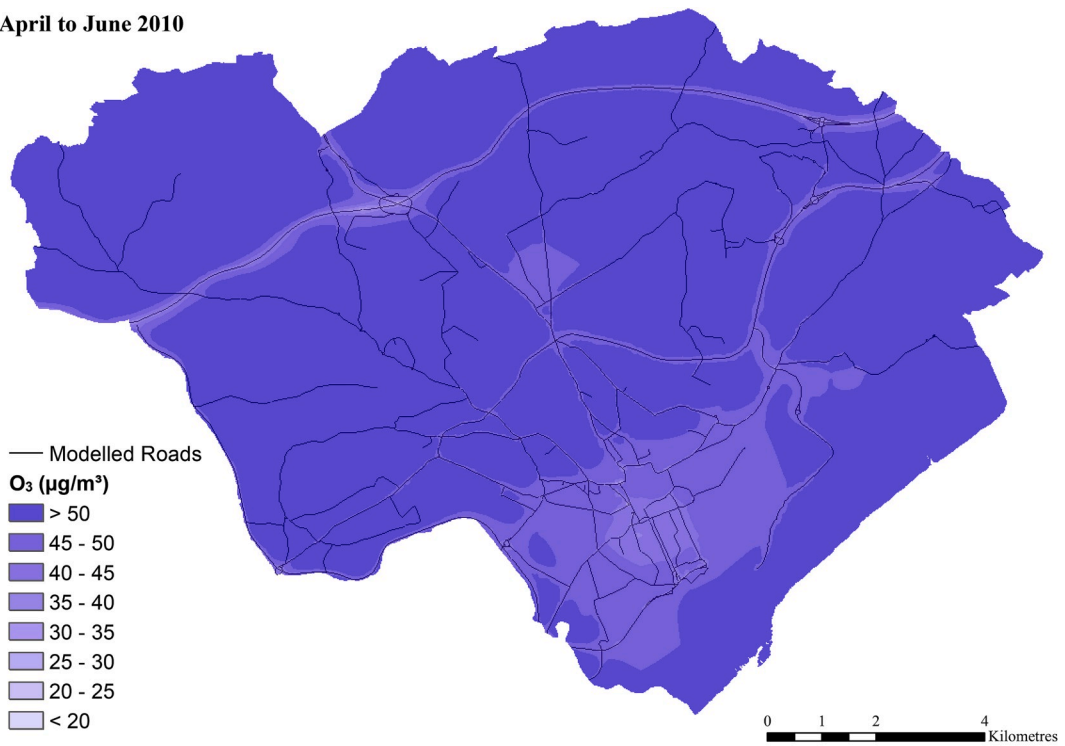
April to June three month average of O₃ concentrations

April to June 2009



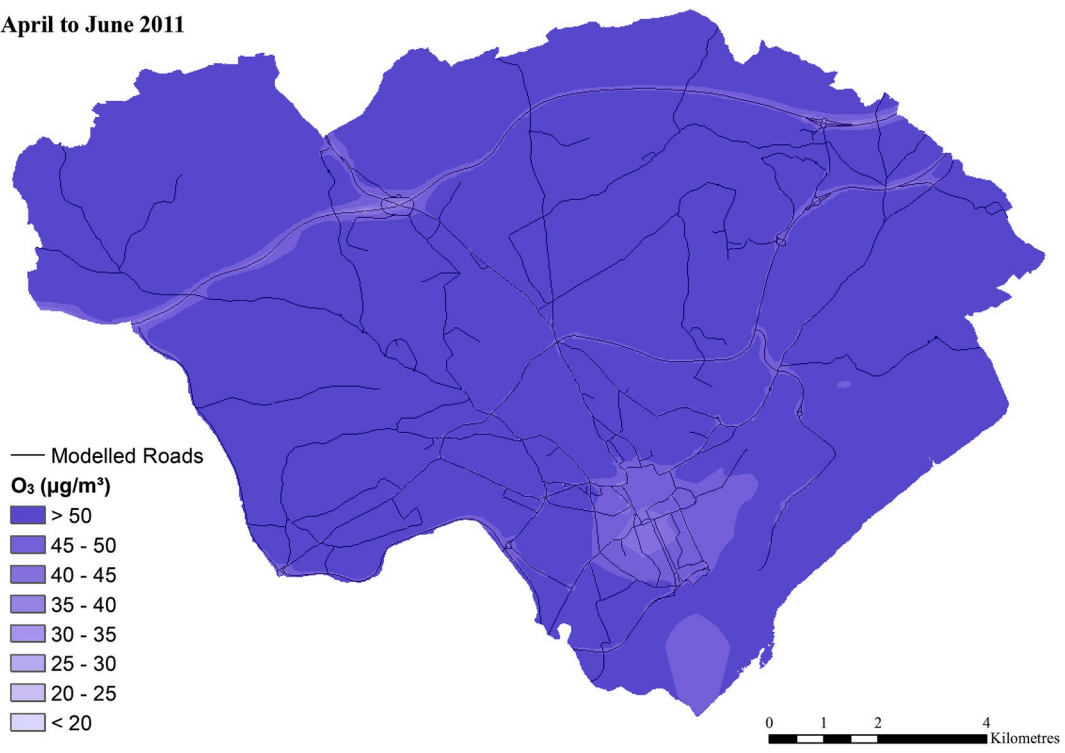
Median = 61.59 µg/m³ (56.84 µg/m³, 64.62 µg/m³ (10th and 90th percentile))

April to June 2010



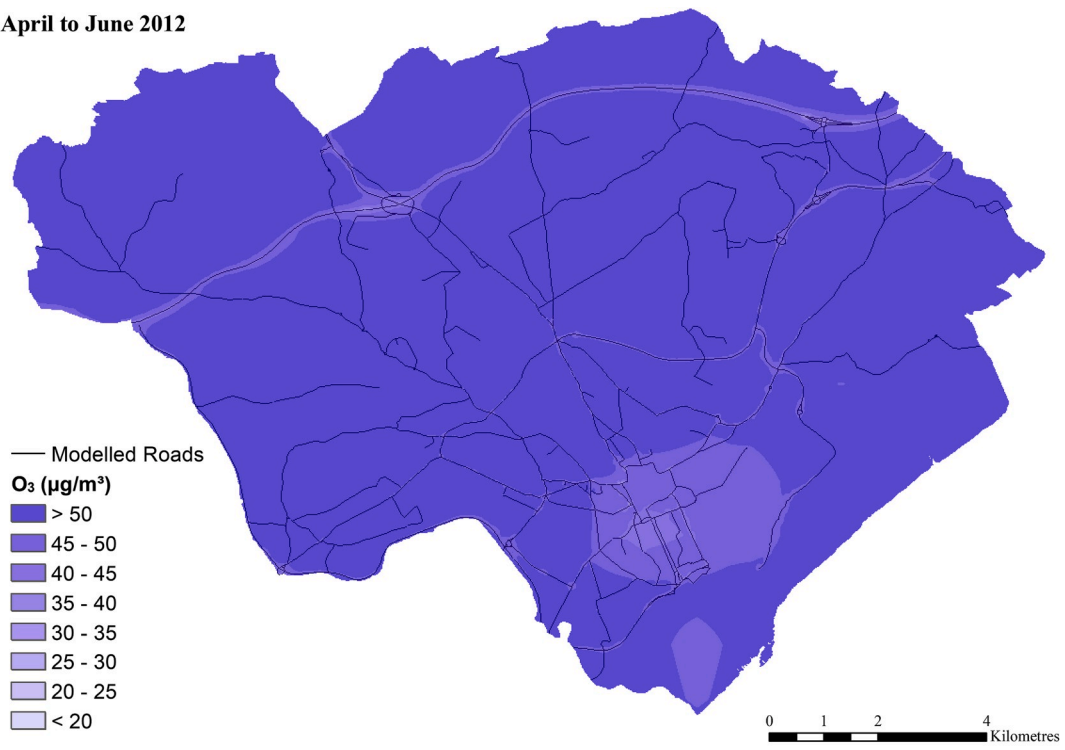
Median = 52.91 µg/m³ (48.60 µg/m³, 59.14 µg/m³ (10th and 90th percentile))

April to June 2011



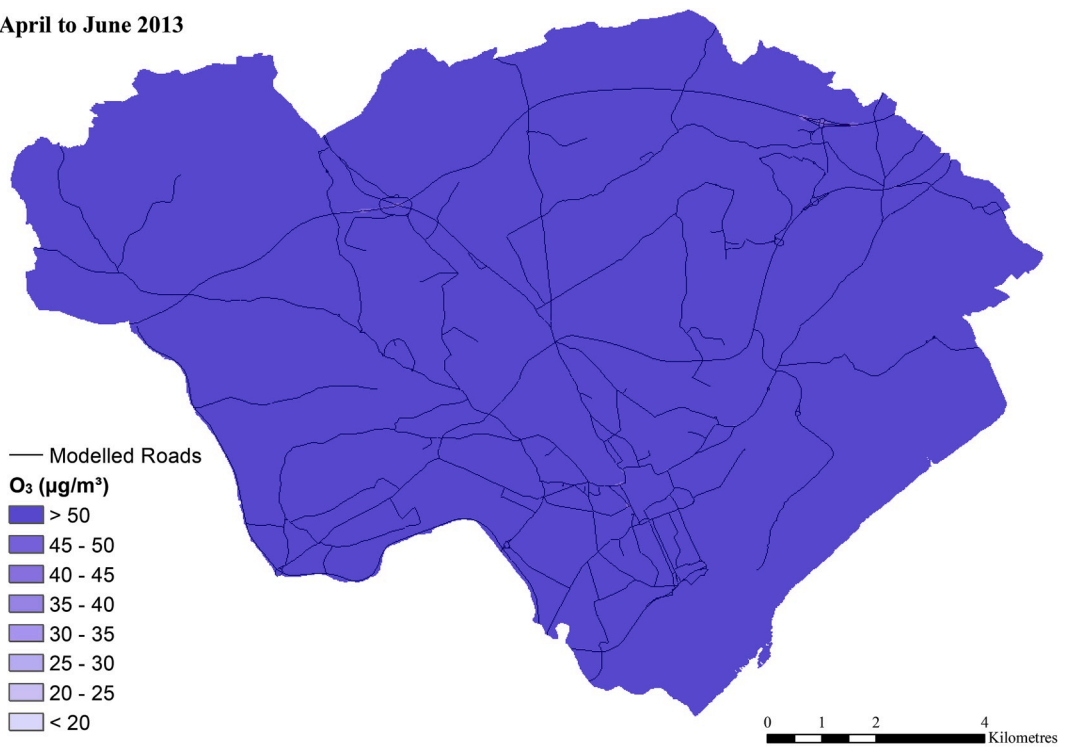
Median = 53.88 $\mu\text{g}/\text{m}^3$ (50.16 $\mu\text{g}/\text{m}^3$, 56.13 $\mu\text{g}/\text{m}^3$ (10th and 90th percentile))

April to June 2012



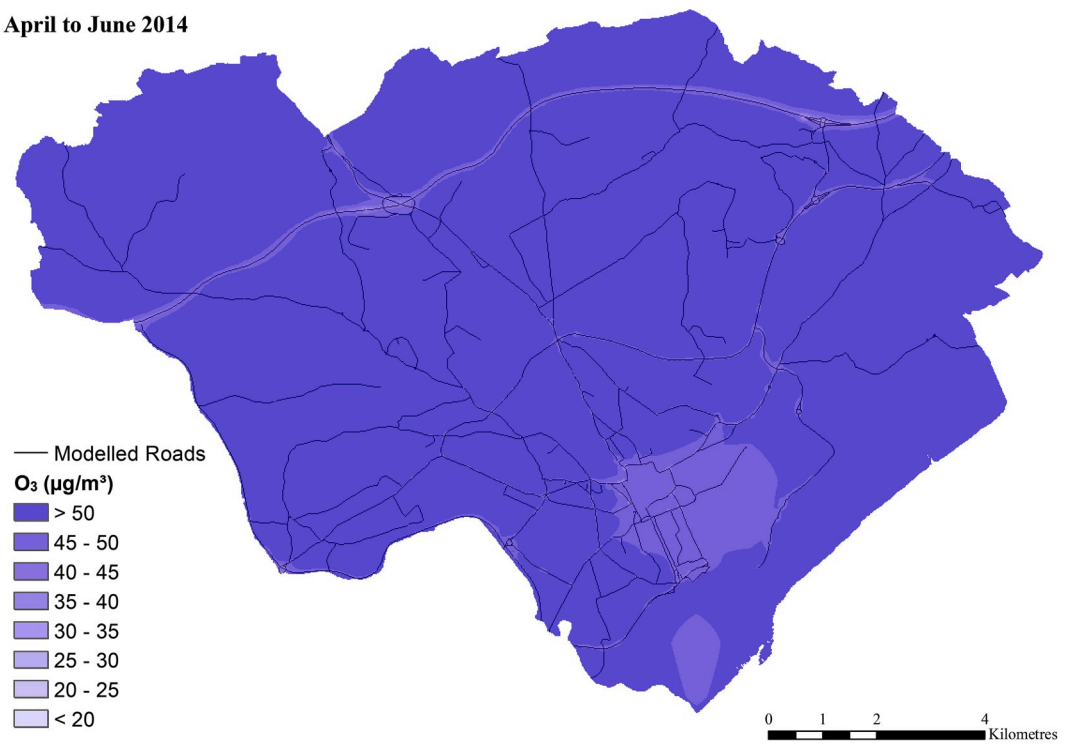
Median = 53.55 $\mu\text{g}/\text{m}^3$ (50.00 $\mu\text{g}/\text{m}^3$, 55.72 $\mu\text{g}/\text{m}^3$ (10th and 90th percentile))

April to June 2013



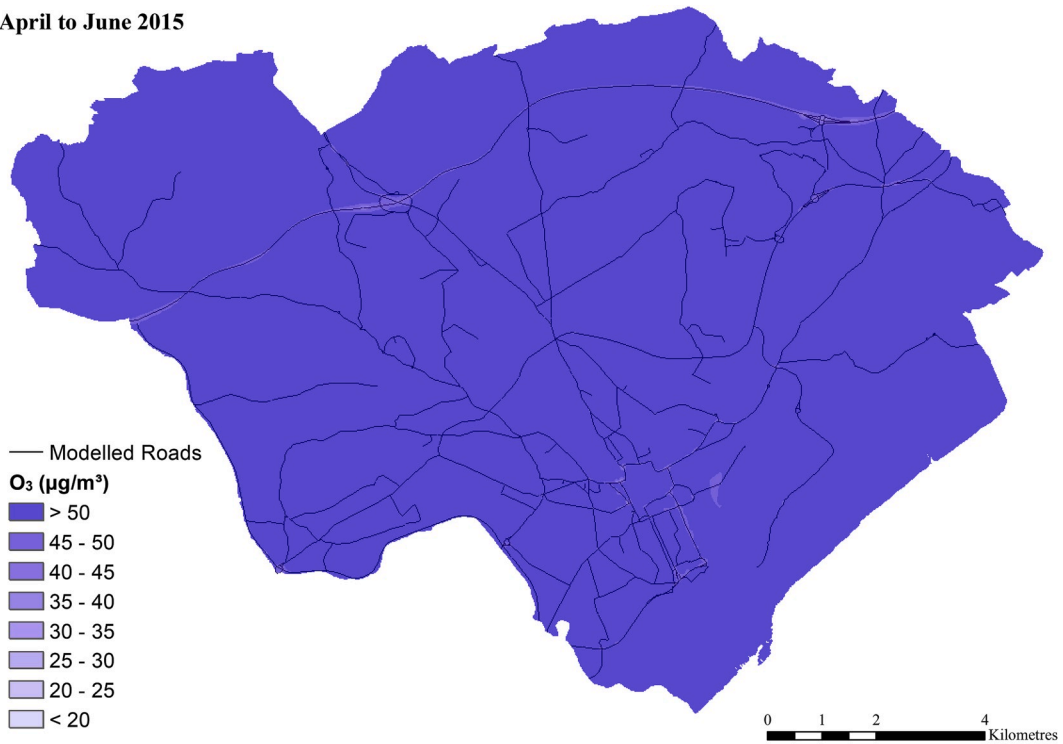
Median = 63.58 µg/m³ (50.00 µg/m³, 55.72µg/m³ (10th and 90th percentile))

April to June 2014



Median = 54.86 µg/m³ (50.66 µg/m³, 57.24µg/m³ (10th and 90th percentile))

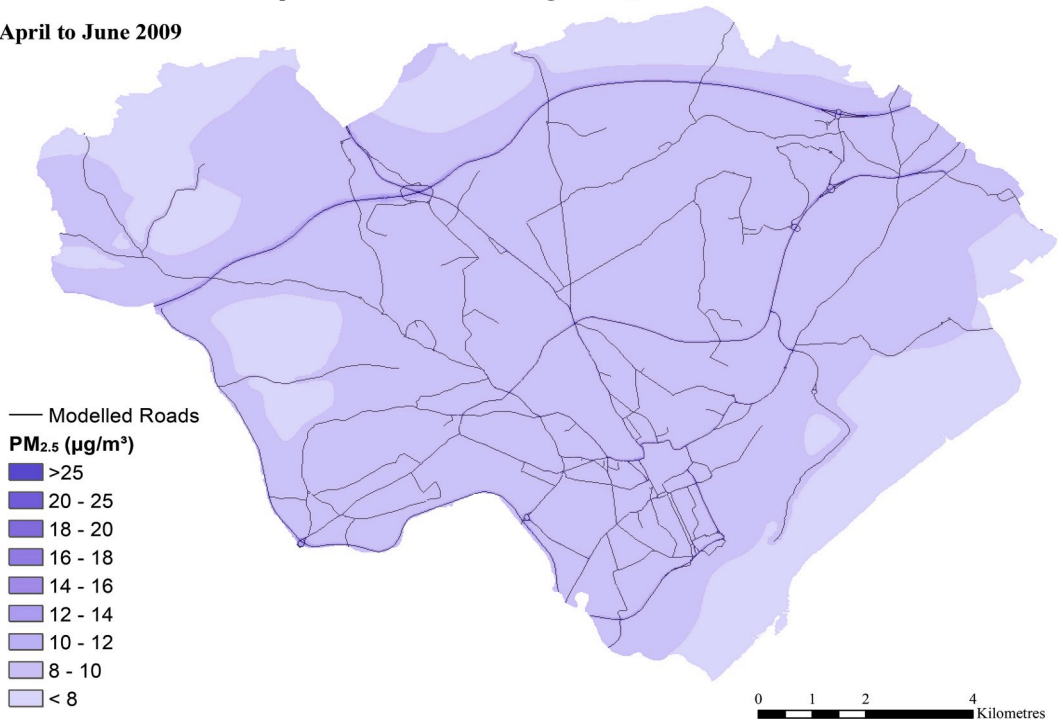
April to June 2015



Median = 57.02 µg/m³ (53.84 µg/m³, 58.67 µg/m³ (10th and 90th percentile))

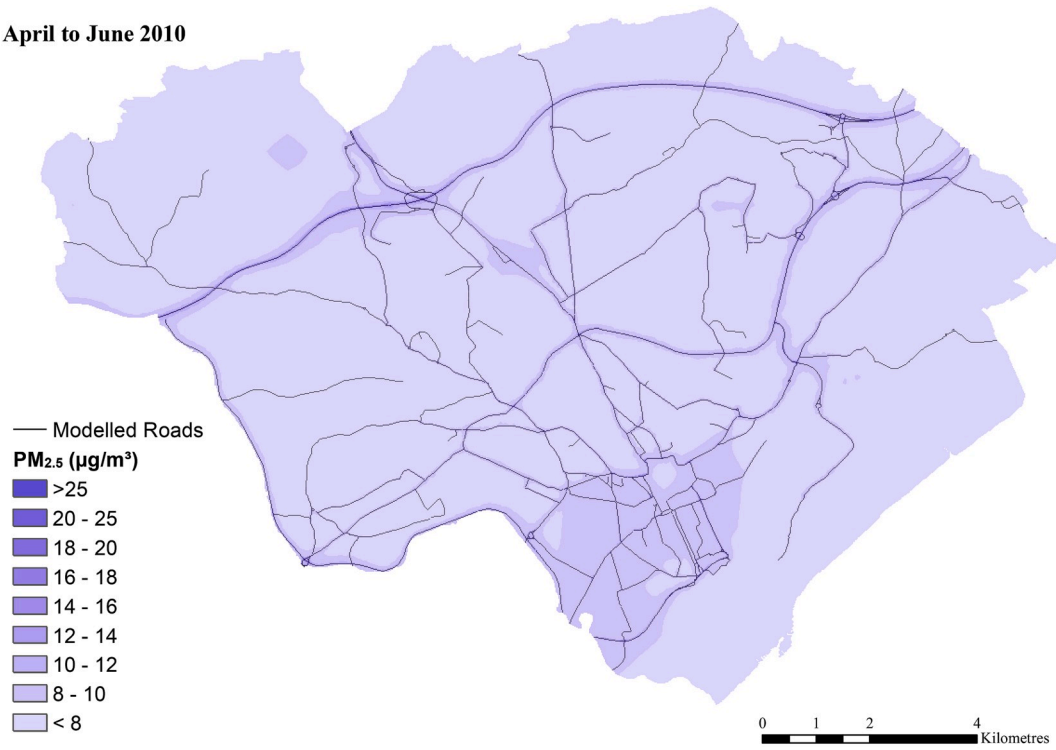
April to June three month average of PM_{2.5} concentrations

April to June 2009



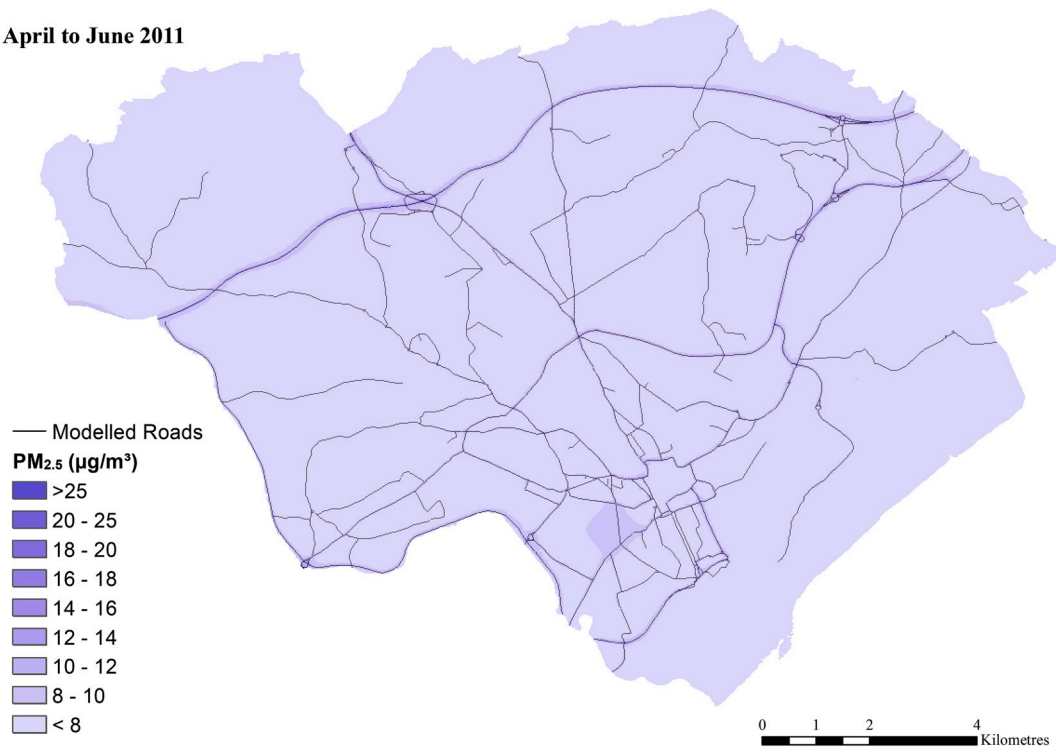
Median = 8.22 µg/m³ (7.89 µg/m³, 8.82 µg/m³ (10th and 90th percentile))

April to June 2010



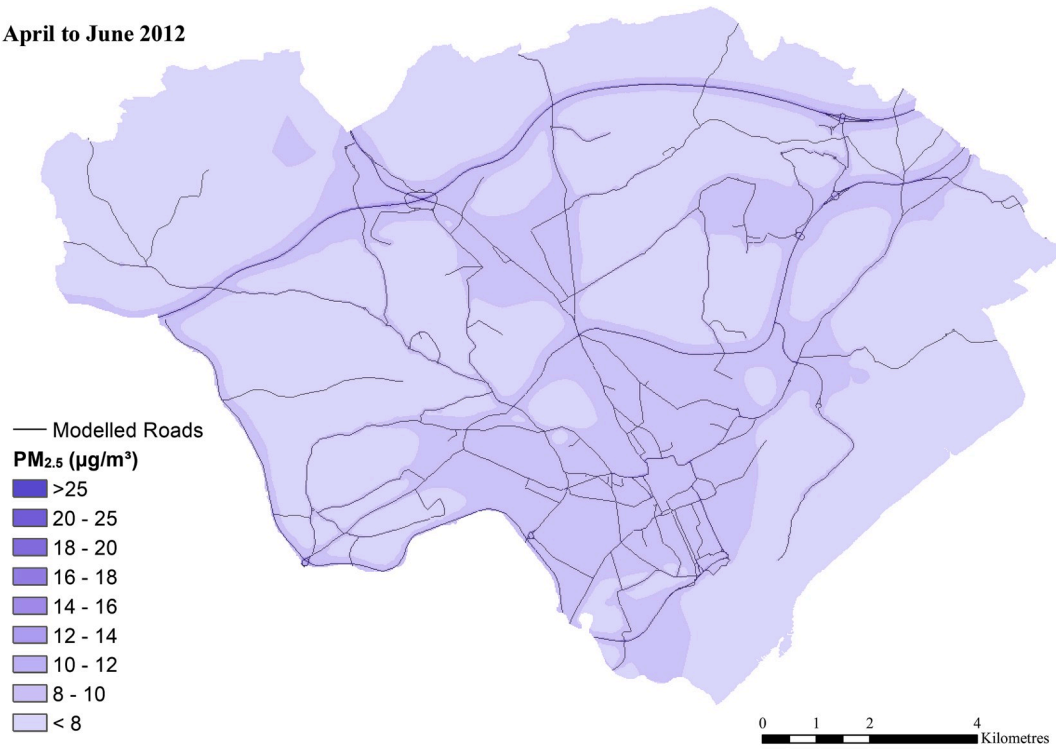
Median = 7.59 $\mu\text{g}/\text{m}^3$ (7.27 $\mu\text{g}/\text{m}^3$, 8.28 $\mu\text{g}/\text{m}^3$ (10th and 90th percentile))

April to June 2011



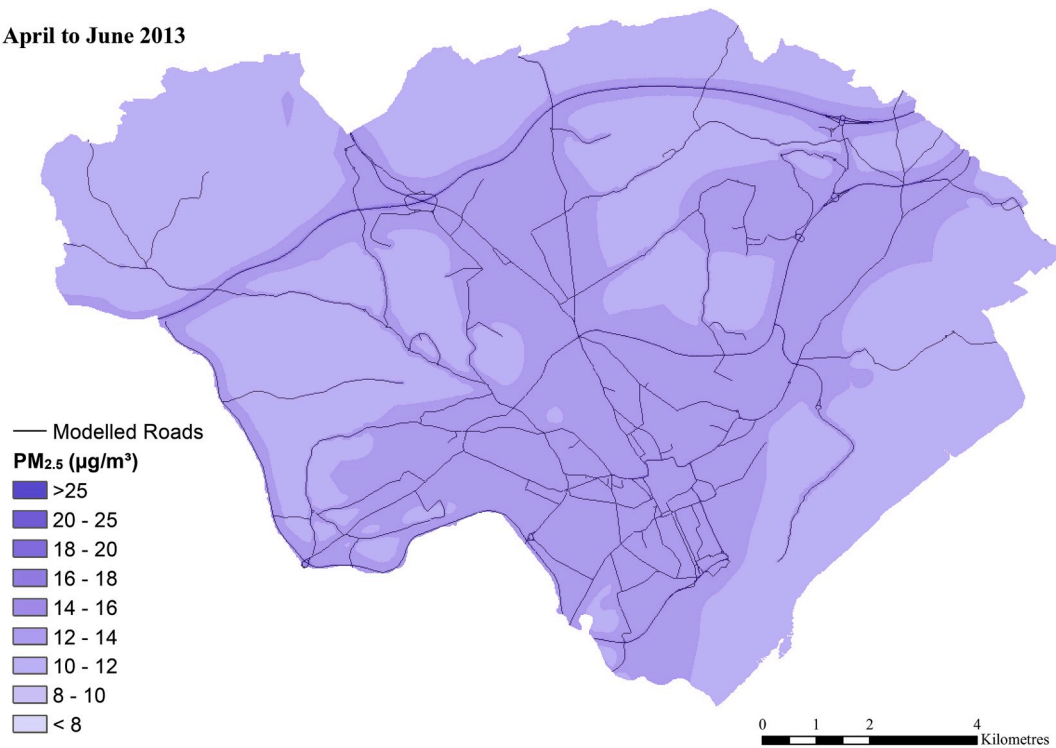
Median = 7.08 $\mu\text{g}/\text{m}^3$ (6.82 $\mu\text{g}/\text{m}^3$, 7.63 $\mu\text{g}/\text{m}^3$ (10th and 90th percentile))

April to June 2012



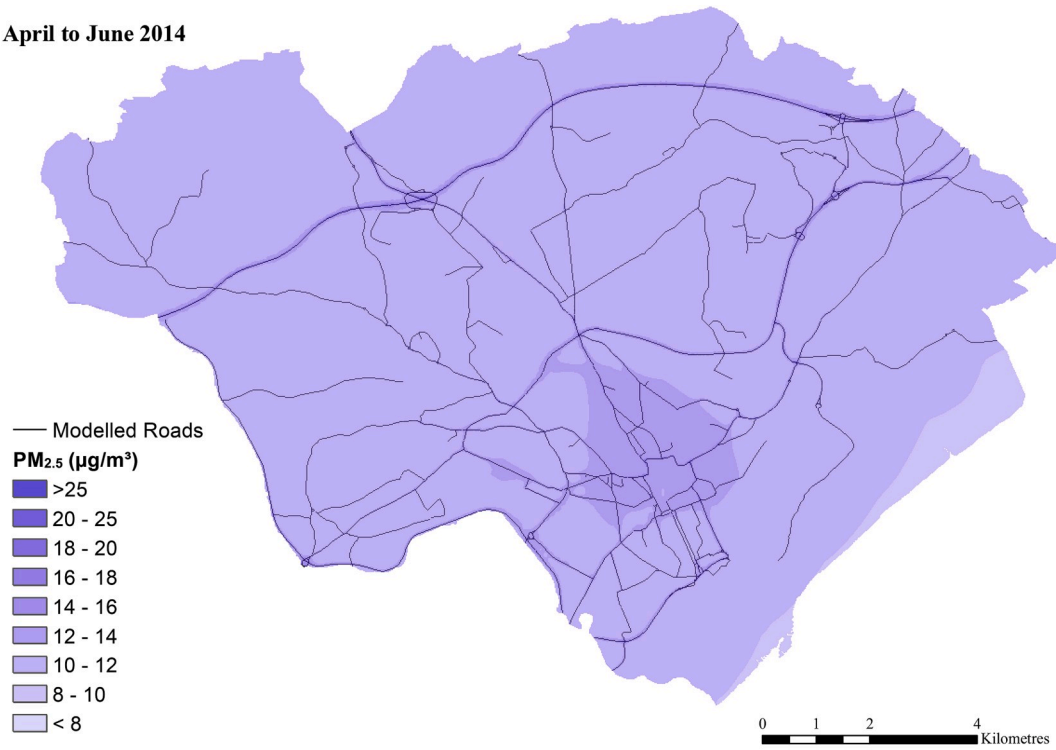
Median = 7.89 $\mu\text{g}/\text{m}^3$ (7.59 $\mu\text{g}/\text{m}^3$, 8.41 $\mu\text{g}/\text{m}^3$ (10th and 90th percentile))

April to June 2013



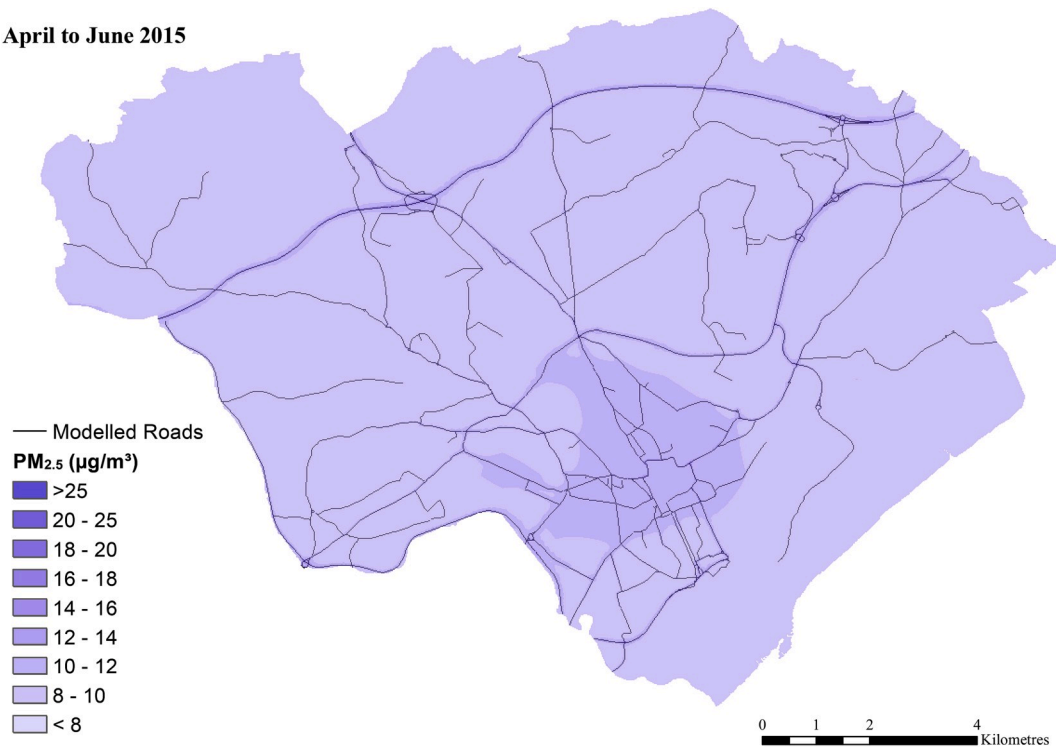
Median = 11.98 $\mu\text{g}/\text{m}^3$ (11.71 $\mu\text{g}/\text{m}^3$, 12.43 $\mu\text{g}/\text{m}^3$ (10th and 90th percentile))

April to June 2014



Median = 10.74 $\mu\text{g}/\text{m}^3$ (10.13 $\mu\text{g}/\text{m}^3$, 11.91 $\mu\text{g}/\text{m}^3$ (10th and 90th percentile))

April to June 2015



Median = 9.15 $\mu\text{g}/\text{m}^3$ (8.68 $\mu\text{g}/\text{m}^3$, 10.06 $\mu\text{g}/\text{m}^3$ (10th and 90th percentile))

Appendix A. Supplementary data

Supplementary data to this article can be found online at <https://doi.org/10.1016/j.healthplace.2020.102355>.

References

- Al Sallakh, M.A., 2018. *Creating and Utilising the Wales Asthma Observatory to Support Health Policy*. Health Service Planning and Clinical Research. Swansea University.
- Beck, I., Jochner, S., Gilles, S., McIntyre, M., Buters, J.T.M., Schmidt-Weber, C., Behrendt, H., Ring, J., Menzel, A., Traidl-Hoffmann, C., 2013. High environmental ozone levels lead to enhanced allergenicity of birch pollen. *PLoS One* 8. <https://doi.org/10.1371/journal.pone.0080147>.
- Benchmark, E.I., Smeeth, L., Guttman, A., Harron, K., Moher, D., Petersen, I., Sorensen, H.T., von Elm, E., Langan, S.M., 2015. The REporting of studies conducted using observational routinely-collected health data (RECORD) statement. *PLoS Med.* 12 <https://doi.org/10.1371/journal.pmed.1001885>.
- Bensnes, S.S., 2016. You sneeze, you lose: the impact of pollen exposure on cognitive performance during high-stakes high school exams. *J. Health Econ.* 49, 1–13. <https://doi.org/10.1016/j.jhealeco.2016.05.005>.
- Blaiss, M.S., Hammerby, E., Robinson, S., Kennedy-Martin, T., Buchs, S., 2018. The burden of allergic rhinitis and allergic rhinoconjunctivitis on adolescents: a literature review. *Ann. Allergy Asthma Immunol.* 121, 43–52. <https://doi.org/10.1016/j.anal.2018.03.028> e3.
- Block, M.L., Calderón-Garcidueñas, L., 2009. Air pollution: mechanisms of neuroinflammation and CNS disease. *Trends Neurosci.* 32, 506–516. <https://doi.org/10.1016/j.tins.2009.05.009>.
- Calderón-Garcidueñas, L., Engle, R., Mora-Tiscareño, A., Styner, M., Gómez-Garza, G., Zhu, H., Jewells, V., Torres-Jardón, R., Romero, L., Monroy-Acosta, M.E., Bryant, C., González-González, L.O., Medina-Cortina, H., D'Angiulli, A., 2011. Exposure to severe urban air pollution influences cognitive outcomes, brain volume and systemic inflammation in clinically healthy children. *Brain Cognit.* 77, 345–355. <https://doi.org/10.1016/j.bandc.2011.09.006>.
- Calderón-Garcidueñas, L., Solt, A.C., Henríquez-Roldán, C., Torres-Jardón, R., Nuse, B., Herritt, L., Villarreal-Calderón, R., Osaya, N., Stone, I., García, R., Brooks, D.M., González-Maciél, A., Reynoso-Robles, R., Delgado-Chávez, R., Reed, W., 2008. Long-term air pollution exposure is associated with neuroinflammation, an altered innate immune response, disruption of the blood-brain barrier, ultrafine particulate deposition, and accumulation of amyloid β -42 and α -synuclein in children and young adult. *Toxicol. Pathol.* 36, 289–310. <https://doi.org/10.1177/0192623307313011>.
- Carruthers, D.J., Holroyd, R.J., Hunt, J.C.R., Weng, W.S., Robins, A.G., Apsley, D.D., Thompson, D.J., Smith, F.B., 1994. UK-ADMS: a new approach to modelling dispersion in the earth's atmospheric boundary layer. *J. Wind Eng. Ind. Aerod.* 52, 139–153. [https://doi.org/10.1016/0167-6105\(94\)90044-2](https://doi.org/10.1016/0167-6105(94)90044-2).
- Chen, J.-C., Schwartz, J., 2009. Neurobehavioral effects of ambient air pollution on cognitive performance in US adults. *Neurotoxicology* 30, 231–239. <https://doi.org/10.1016/j.neuro.2008.12.011>.
- Chen, X., Zhang, Xiaobo, Zhang, Xin, 2017. Smog in Our Brains: Gender Differences in the Impact of Exposure to Air Pollution on Cognitive Performance. *IZA Discuss. Pap.* No 10628. <https://doi.org/10.1073/pnas.1809474115>.
- Chief Medical Officer, 2017. *Annual Report of the Chief Medical Officer 2017 - Health Impacts of All Pollution – what Do We Know?*
- Currie, J., Hanushek, E.A., Megan Kahn, E., Neidell, M., Rivkin, S.G., 2009. Does pollution increase school absences? *Rev. Econ. Stat.* 91, 682–694. <https://doi.org/10.1162/rest.91.4.682>.
- Currie, J., Zivin, J.G., Mullins, J., Neidell, M., 2014. What do we know about short- and long-term effects of early-life exposure to pollution? *Annu. Rev. Resour. Econ.* 6, 217–247. <https://doi.org/10.1146/annurev-resource-100913-012610>.
- Currie, J., Zivin, J.S.G., Mullins, J., Neidell, M.J., 2013. What do we know about short and long term effects of early life exposure to pollution? *NBER Work. Pap.* 6, 217–247. <https://doi.org/10.3386/w19571>.
- DEFRA, 2020. *Clean Air Zone Framework*. Joint Air Quality Unit.
- Department for Environment Food and Rural Affairs (DEFRA), 2010. *Air Pollution: Action in a Changing Climate*, vol. 24. Environment.
- Desjardins, M.R., Hohl, A., Griffith, A., Delmelle, E., 2019. A space-time parallel framework for fine-scale visualization of pollen levels across the Eastern United States. *Cartogr. Geogr. Inf. Sci.* 46, 428–440. <https://doi.org/10.1080/15230406.2018.1515664>.
- EAN - European Aeroallergen Network - Home, 2019 [WWW Document]. <https://ean.polleninfo.eu/Ean/>. (Accessed 3 August 2019).
- Fotourehchi, Z., 2016. Health effects of air pollution: an empirical analysis for developing countries. *Atmospheric Pollut. Res.* 7, 201–206. <https://doi.org/10.1016/j.apr.2015.08.011>.
- Freire, C., Ramos, R., Puertas, R., Lopez-Espinosa, M.-J., Julvez, J., Aguilera, I., Cruz, F., Fernandez, M.-F., Sunyer, J., Olea, N., 2010. Association of traffic-related air pollution with cognitive development in children. *J. Epidemiol. Community Health* 64, 223–228. <https://doi.org/10.1136/jech.2008.084574>.
- Grineski, S.E., Collins, T.W., Adkins, D.E., 2020. Hazardous air pollutants are associated with worse performance in reading, math, and science among US primary schoolchildren. *Environ. Res.* 181, 108925. <https://doi.org/10.1016/j.envres.2019.108925>.
- Guerreiro, C., Gonzalez Ortiz, A., de Leeuw, F., Viana, M., Horalek, J., 2016. *Air Quality in Europe – 2016 Report*. <https://doi.org/10.2800/413142>.
- Gulliver, J., Elliott, P., Henderson, J., Hansell, A.L., Vienneau, D., Cai, Y., McCrea, A., Garwood, K., Boyd, A., Neal, L., Agnew, P., Fecht, D., Briggs, D., de Hoogh, K., 2018. Local- and regional-scale air pollution modelling (PM10) and exposure assessment for pregnancy trimesters, infancy, and childhood to age 15 years: avon Longitudinal Study of Parents and Children (ALSPAC). *Environ. Int.* 113, 10–19. <https://doi.org/10.1016/j.envint.2018.01.017>.
- Guxens, M., Sunyer, J., 2012. A review of epidemiological studies on neuropsychological effects of air pollution. *Swiss Med. Wkly.* 141 <https://doi.org/10.4414/smw.2012.13322> w13322.
- Hanna, R., Oliva, P., 2015. The effect of pollution on labor supply: evidence from a natural experiment in Mexico City. *J. Publ. Econ.* 122, 68–79. <https://doi.org/10.1016/j.jpubeco.2014.10.004>.
- Jáuregui, I., Mulla, J., Dávila, I., Ferrer, M., Bartra, J., Del Cuvillo, A., Montoro, J., Sastre, J., Valero, A., 2009. Allergic rhinitis and school performance. *J. Investig. Allergol. Clin. Immunol.* 19, 32–39.
- Kim, S.Y., Kim, M.-S., Park, B., Kim, J.-H., Choi, H.G., 2017. Allergic rhinitis, atopic dermatitis, and asthma are associated with differences in school performance among Korean adolescents. <https://doi.org/10.1371/journal.pone.0171394>.
- Lavy, V., Roth, S., 2014. The impact of short term exposure to ambient air pollution on cognitive performance and human capital formation. *Natl. Bur. Econ. Res.* 1–40 <https://doi.org/10.3386/w20648>.
- Lyons, R. a, Jones, K.H., John, G., Brooks, C.J., Verplanck, J.-P., Ford, D.V., Brown, G., Leake, K., 2009. The SAIL databank: linking multiple health and social care datasets. *BMC Med. Inf. Decis. Making* 9, 3. <https://doi.org/10.1186/1472-6947-9-3>.
- Mizen, A., Lyons, J., Doherty, R., Berridge, D., Wilkinson, P., Milojevic, A., Carruthers, D., Akbari, A., Lake, I., Davies, G.A., Sallakh, M.A., Mavrogiani, A., Dearden, L., Johnson, R., Rodgers, S.E., 2018. Creating individual level air pollution exposures in an anonymised data safe haven: a platform for evaluating impact on educational attainment. *Int. J. Popul. Data Sci.* 3.
- Park, Y.M., Kwan, M.-P., 2017. Individual exposure estimates may be erroneous when spatiotemporal variability of air pollution and human mobility are ignored. *Health Place* 43, 85–94. <https://doi.org/10.1016/j.healthplace.2016.10.002>.
- Portnov, B.A., Dubnov, J., Barchana, M., 2009. Studying the association between air pollution and lung cancer incidence in a large metropolitan area using a kernel density function. *Socioecon. Plann. Sci.* 43, 141–150. <https://doi.org/10.1016/j.seps.2008.09.001>.
- Review of Strategic Noise Maps in Wales, 2015. Welsh Government.
- Rodgers, S.E., Lyons, R.A., Dsilva, R., Jones, K.H., Brooks, C.J., Ford, D.V., John, G., Verplanck, J.-P., 2009. Residential anonymous linking fields (RALFs): a novel information infrastructure to study the interaction between the environment and individuals' health. *J. Public Health* 10, 1–7. <https://doi.org/10.1093/pubmed/udp041>.
- Rogers, J.F., Dunlop, A.L., 2006. Air pollution and very low birth weight infants: a target population? *Pediatrics* 118, 156 LP – 164.
- Ruijsbroek, A., Wijga, A.H., Gehring, U., Kerkhof, M., Droomers, M., 2015. School performance: a matter of health or socio-economic background? Findings from the PIAMA birth cohort study. *PLoS One* 10, 1–17. <https://doi.org/10.1371/journal.pone.0134780>.
- Skoner, D.P., 2001. Allergic rhinitis: definition, epidemiology, pathophysiology, detection, and diagnosis. *J. Allergy Clin. Immunol.* 108, 2–8. <https://doi.org/10.1067/mai.2001.115569>.
- Sturdy, P., Bremner, S., Harper, G., Mayhew, L., Eldridge, S., Eversley, J., Sheikh, A., Hunter, S., Boomla, K., Feder, G., Prescott, K., Griffiths, C., 2012. Impact of asthma on educational attainment in a socioeconomically deprived population: a study linking health, education and social care datasets. *PLoS One* 7, 1–8. <https://doi.org/10.1371/journal.pone.0043977>.
- Sunyer, J., Esnaola, M., Alvarez-Pedrerol, M., Forns, J., Rivas, I., Lopez-Vicente, M., Suades-Gonzalez, E., Foraster, M., Garcia-Esteban, R., Basagana, X., Viana, M., Cirach, M., Moreno, T., Alastuey, A., Sebastian-Galles, N., Nieuwenhuijsen, M., Querol, X., 2015. Association between traffic-related air pollution in schools and cognitive development in primary school children: a prospective cohort study. *PLoS Med.* 12, 1–24. <https://doi.org/10.1371/journal.pmed.1001792>.
- Sunyer, J., Suades-González, E., García-Esteban, R., Rivas, I., Pujol, J., Alvarez-Pedrerol, M., Forns, J., Querol, X., Basagana, X., 2017. Traffic-related air pollution and attention in primary school children. *Epidemiology* 28, 181–189. <https://doi.org/10.1097/EDE.0000000000000603>.
- The Guardian, D.C.E., 2020. *UK Cities Postpone Clean Air Zone Plans Due to Covid-19 Crisis*. The Guardian.
- Wang, Shunqin, Zhang, J., Zeng, X., Zeng, Y., Wang, Shengchun, Chen, S., 2009. Association of traffic-related air pollution with children's neurobehavioral functions in Quanzhou, China. *Environ. Health Perspect.* 117, 1612–1618. <https://doi.org/10.1289/ehp.0800023>.
- Weather and climate change - Met Office [WWW Document]. <https://www.metoffice.gov.uk/>. (Accessed 3 August 2019).

Whitehead, M., 2014. Due North: the Report of the Inquiry on Health Equity for the North, Inquiry Panel on Health Equity for the North of England. University of Liverpool and Centre for Local Economic Strategies.

World Health Organization, 2018. Ambient (Outdoor) Air Quality and Health [WWW Document]. URL. [https://www.who.int/news-room/fact-sheets/detail/ambient-\(outdoor\)-air-quality-and-health](https://www.who.int/news-room/fact-sheets/detail/ambient-(outdoor)-air-quality-and-health). (Accessed 22 March 2019).

Zhang, Xin, Chen, X., Zhang, Xiaobo, 2018. The impact of exposure to air pollution on cognitive performance. *Proc. Natl. Acad. Sci. Unit. States Am.* 115, 9193–9197. <https://doi.org/10.1073/pnas.1809474115>.