

Association between body mass index and blood pressure levels across socio-demographic groups and geographical settings: analysis of pooled data in Peru

Antonio Bernabe-Ortiz^{1,2}, Rodrigo M. Carrillo-Larco^{1,3} and J. Jaime Miranda^{1,4}

¹ CRONICAS Center of Excellence in Chronic Diseases, Universidad Peruana Cayetano Heredia, Lima, Peru

² Universidad Científica del Sur, Lima, Peru

³ Department of Epidemiology and Biostatistics, School of Public Health, Imperial College London, London, United Kingdom

⁴ The George Institute for Global Health, University of New South Wales, Sydney, Australia

ABSTRACT

Background: Understanding the relationship between BMI and blood pressure requires assessing whether this association is similar or differs across population groups. This study aimed to assess the association between body mass index (BMI) and blood pressure levels, and how these associations vary between socioeconomic groups and geographical settings.

Methods: Data from the National Demographic Health Survey of Peru from 2014 to 2019 was analyzed considering the complex survey design. The outcomes were levels of systolic (SBP) and diastolic blood pressure (DBP), and the exposure was BMI. Exposure and outcomes were fitted as continuous variables in a non-linear quadratic regression model. We explored effect modification by six socioeconomic and geographical variables (sex, age, education level, socioeconomic position, study area, and altitude), fitting an interaction term between each of these variables and BMI.

Results: Data from 159,940 subjects, mean age 44.4 (SD: 17.1), 54.6% females, was analyzed. A third (34.0%) of individuals had ≥ 12 years of education, 24.7% were from rural areas, and 23.7% lived in areas located over 2,500 m above sea level. In the overall sample mean BMI was 27.1 (SD: 4.6) kg/m², and mean SBP and DBP were 122.5 (SD: 17.2) and 72.3 (SD: 9.8) mmHg, respectively. In the multivariable models, greater BMI levels were associated with higher SBP (p -value < 0.001) and DBP (p -value < 0.001). There was strong evidence that sex, age, education level, and altitude were effect modifiers of the association between BMI and both SBP and DBP. In addition to these socio-demographic variables, socioeconomic position and study area were also effect modifiers of the association between BMI and DBP, but not SBP.

Conclusions: The association between BMI and levels of blood pressure is not uniform on a range of socio-demographic and geographical population groups. This characterization can inform the understanding of the epidemiology and rise of blood pressure in a diversity of low-resource settings.

Submitted 14 January 2021

Accepted 29 March 2021

Published 21 April 2021

Corresponding author

Antonio Bernabe-Ortiz,
antonio.bernabe@upch.pe

Academic editor

Antonio Palazón-Bru

Additional Information and
Declarations can be found on
page 12

DOI 10.7717/peerj.11307

© Copyright

2021 Bernabe-Ortiz et al.

Distributed under

Creative Commons CC-BY 4.0

OPEN ACCESS

Subjects Cardiology, Epidemiology, Global Health, Public Health, Metabolic Sciences

Keywords Blood pressure, Body mass index, Hypertension, Obesity

INTRODUCTION

Globally, the number of adults living with raised blood pressure has increased from 594 million in 1975 to 1.13 billion in 2015 (*NCD Risk Factor Collaboration (NCD-RisC), 2017a*); and this condition is responsible for 9.4 million deaths worldwide (*Lim et al., 2012*), disproportionately affecting low- and middle-income countries. On the other hand, the alarming increase of body mass index (BMI) during the last decades (*NCD Risk Factor Collaboration (NCD-RisC), 2017b*), accompanied by the increase in the prevalence of overweight and obesity, will most likely pair the raise in blood pressure levels.

In Latin America, despite the high prevalence of cardiometabolic risk factors (*NCD Risk Factor Collaboration (NCD-RisC)—Americas Working Group, 2020*), their distribution is not homogenous between countries introducing additional particularities in shaping prevention and control strategies for raised blood pressure across settings. The increases in the levels of blood pressure and BMI are two ongoing global phenomena observed in recent decades, and understanding the patterning of its linkages is required to better counter them. This is of utmost importance as raises in BMI have been predominantly driven by increases in rural areas (*NCD Risk Factor Collaboration (NCD-RisC), 2019*).

BMI has been positively associated with both systolic (SBP) and diastolic (DBP) blood pressure (*Droyvold et al., 2005; Linderman et al., 2018*). Although previous studies have described this association, many of these reports arise from high-income countries (*Danon-Hersch et al., 2007; Gelber et al., 2007; Hubert et al., 1983*), and from Asia and Africa (*Linderman et al., 2018; Tesfaye et al., 2007*), with limited representation from Latin American settings.

Understanding the relationship between BMI and blood pressure requires assessing whether this association is similar or differs across population groups. Peru, a middle-income country located in South America, is a country with pronounced socioeconomic disparities. These inequalities are paired with a unique geographical diversity with populations living across a range of low and high-altitude, and rural and urban areas. These sociodemographic factors can influence how the BMI is associated with blood pressure levels. Therefore, we aimed to assess the association between BMI and both SBP and DBP, and determine whether this association varies between different subgroups of the population.

METHODS

Study design and population

Data from Peru's National Demographic Health Survey (ENDES, Spanish acronym) from 2014 to 2019 was utilized in this analysis. The ENDES is a nationally representative population-based survey conducted annually. Since 2014, the ENDES has also included a health questionnaire and blood pressure measurements, on a yearly basis.

The ENDES sampling followed a bietapic approach. In rural areas, the primary sampling units were clusters of 500 to 2,000 individuals and the secondary sampling units

were the households within each of these clusters. In urban areas, the sampling units were blocks or groups of blocks with more than 2,000 individuals and an average of 140 households; the secondary sampling units were also households as in rural settings. Details about the sampling process are described in detail elsewhere (*Instituto Nacional de Estadística e Informática, 2015*). For this analysis we included data from participants aged 20 years and above (as adolescence, i.e., up to 19 years, may affect body distribution and for instance BMI) with complete BMI and blood pressure measures.

Variables definition

Outcomes

The outcomes were both SBP and DBP. To guarantee that only plausible measurements were included in analyses, a cut point was used as in previous studies (*NCD Risk Factor Collaboration (NCD-RisC), 2017a*): SBP measurements should be ≥ 70 and ≤ 270 mmHg, whereas DBP measurements should be ≥ 50 and ≤ 150 mmHg. The no-plausible values were dropped from analyses.

Blood pressure was measured using a digital monitor (OMRON, model HEM-713), validated for adult populations (*Takahashi, Yoshika & Yokoi, 2015*). Two types of cuffs were used depending on the arm circumference of participants: standard arm (220 to 320 mm) and thicker arm (330 to 430 mm). Blood pressure measurements were assessed twice with the participant sitting and their right arm resting on a flat surface at the heart level. The first measurement was taken after a resting period of at least 5 min, and the second measurement was taken 2 min thereafter (*Instituto Nacional de Estadística e Informática, 2018*). The average of the two assessments was used in the analysis only if the difference between both measurements did not exceed 10 mmHg. Those exceeding that threshold were dropped from further analyses.

Exposure

BMI (kg/m^2), as a continuous variable, was defined as weight (kg) divided by height squared (m^2). Participants' weight and height were measured following standard procedures (*Instituto Nacional de Estadística e Informática, 2018*), with the subject without shoes. To guarantee that only plausible BMI measurements were included in analyses, a cut point was used as in previous studies (*Linderman et al., 2018*): BMI ≥ 10 kg/m^2 and < 60 kg/m^2 .

Effect modifiers

A set of socio-demographic and geographical variables were also included as confounders and potential effect modifiers of the association of interest. We included sex (female vs. male); age (as continuous variable, but also categorized as < 40 , 40–59, and ≥ 60 years); education level (in years, < 7 , 7–11, and ≥ 12 years), and socioeconomic position (defined in tertiles based on a wealth index). This wealth index was calculated by the National Institute of Statistics and Informatics (INEI, Spanish acronym) based on assets and services that the participant reported having in the household (*Rutstein & Johnson, 2004*). As geographical variables we considered area (rural vs. urban) and altitude (≤ 500 , 501–2,500, and $\geq 2,501$ m above the sea level [m.a.s.l.]).

Other variables

For description of the participants characteristics in our study sample, we also provide information on hypertension, overweight and obesity. The ENDES collected self-reported information about whether the participant had a previous diagnosis of hypertension and if participants were receiving any anti-hypertensive medication. Therefore, hypertension was also defined as SBP ≥ 140 mmHg or DBP ≥ 90 mmHg, or having a previous diagnosis of hypertension (*Chobanian et al., 2003*). Standard BMI thresholds were used to estimate prevalence of overweight and obesity: BMI ≥ 25 and <30 kg/m² for overweight, and BMI ≥ 30 kg/m² for obesity, whereas BMI < 25 kg/m² was classified as normal.

STATISTICAL METHODS

Analyses were performed using STATA 16 for Windows (StataCorp, College Station, TX, US). Descriptive statistics and estimates were calculated considering the complex survey design using sample strata, primary sampling units and sampling weights, including the analysis of subpopulation groups (*West, Berglund & Heeringa, 2008*). We decided to pool data to maximize sample size while also decreasing statistical uncertainty; this process is consistent with large and global data pooling endeavors conducted before (e.g., IHME/GBD, NCD-RisC, among others).

Initially, description of continuous variables was conducted using mean and standard deviation (SD), whereas for categorical variables we used absolute and relative frequencies. Prevalence of hypertension, overweight, and obesity, and their respective 95% confidence intervals (95% CI), were also estimated. Comparisons were performed using Chi-squared test corrected for the survey design with the second-order correction of Rao and Scott (*Rao & Scott, 1984*) for categorical variables, whereas t-test was used for numeric variables.

To assess the association between BMI and blood pressure, a non-linear regression model (more details are provided in the Supporting Information file: [Statistical approach](#)) was built as suggested in literature (*Kerry et al., 2005*). An adjusted model was also created including coefficients for categorical variables (i.e., sex, education level, socioeconomic position, study area and altitude), whereas age was included as continuous variable as previous studies (*NCD Risk Factor Collaboration (NCD-RisC)—Americas Working Group, 2020; NCD Risk Factor Collaboration (NCD-RisC), 2017a; NCD Risk Factor Collaboration (NCD-RisC), 2017b*).

To explore effect modification, i.e., to evaluate whether the association between BMI and levels of blood pressure vary by specific population groups, i.e., by socio-demographic and geographical variables, an interaction term between each socio-demographic variable and BMI (and its quadratic term) was included (see **Supporting Information file: [Statistical approach](#)**). Effect modification was assessed using the *testparm*, a post-estimation command in STATA and a *p*-value < 0.05 was considered significant. When conducting multivariable model stratified by subgroups, we excluded the variable defining that subgroup from the list of potential confounders. Collinearity was evaluated using the tolerance test in STATA. Marginal means of blood pressure levels for specified fixed values of socio-demographic variables were calculated from each fitted

model and presented as figures (and also tables) to verify variation of the association of interest (*Graubard & Korn, 1999; Williams, 2012*). Values of BMI higher than 50 kg/m² were truncated to avoid the impact of few values on results (<0.1% of subjects had values of BMI > 50 kg/m²).

Finally, sub-analyses were also conducted to assess the association of interest (overall and by sub-population group) by excluding individuals who reported taking anti-hypertensive medication as this could bias results.

ETHICS

The data used in our study is anonymous and freely available to the general public and does not reveal any personal identifiable information, and consequently this study does not represent an ethical risk for participants. The INEI, a Peruvian government organization, is responsible for the annual collection of ENDES data. This institution requested the consent of participants before the survey.

RESULTS

Characteristics of the study population

Data from a total of 203,880 individuals was available for the analysis utilizing ENDES annual evaluations over the study period. Of them, information from 22,646 (11.1%) aged <20 years; 2,734 (1.3%) pregnant women; 15,519 (7.6%) without blood pressure; 3,007 (1.5%) without BMI results, and 34 (<0.1%) with BMI \geq 60 kg/m² were excluded from our analysis. Thus, a total of 159,940 subjects, mean age 44.4 (SD: 17.1), 54.6% females, were analyzed. Of note, only a third (34.0%) of individuals had \geq 12 years of education, 24.7% were from rural areas, and 23.7% lived in areas located over 2,500 m.a.s.l.

Mean BMI was 27.1 (SD: 4.6) kg/m² in the overall sample. The prevalence of overweight was 41.6% (95% CI [41.2–42.0%]), and the prevalence of obesity was 23.5% (95% CI [23.1–23.9%]). Similarly, mean SBP and DBP were 122.5 (SD: 17.2) and 72.3 (SD: 9.8) mmHg, respectively, whilst the prevalence of hypertension was 21.2% (20.8–21.6%).

When comparing socio-demographic characteristics by sex, males had higher number of years of education and greater blood pressure levels and hypertension rates compared to females. Conversely, females had higher body mass index and greater obesity rates ([Table 1](#)).

Association between body mass index and blood pressure levels

Greater BMI levels were associated with increasing SBP (p -value <0.001) and DBP (p -value <0.001) values in multivariable models ([Figs. 1A–1B](#)).

The increase of SBP per unit BMI varied from 0.05 to 1.8 mmHg/(kg/m²), whereas the increase of DBP ranged from 0.09 to 1.13 mmHg/(kg/m²). Estimates for specific BMI cut points are shown in [Table 2](#) and [Table 3](#) (by sex), where the highest values of both, SBP and DBP, were reached at BMI of 45 kg/m².

The association between BMI and SBP differed by different socio-demographic variables ([Figs. 2A–2F](#)), it was stronger among males (p -value for interaction term <0.001), among older individuals (p -value for interaction term <0.001), those less educated (p -value

Table 1 Description of the study population by sex comparison considering complex sampling design.

	Females (<i>n</i> = 89,376)	Males (<i>n</i> = 70,538)	<i>p</i> -value
Age			
Mean (SD)	44.3 (16.9)	44.4 (17.2)	0.51
Age (categories)			
<40 years	51,232 (46.5%)	36,727 (45.8%)	0.31
40–59 years	24,553 (33.1%)	22,188 (33.5%)	
≥60 years	13,591 (20.4%)	11,623 (20.7%)	
Education level			
<7 years	27,034 (30.4%)	18,093 (23.4%)	<0.001
7–11 years	32,046 (36.5%)	30,114 (41.6%)	
≥12 years	24,479 (33.1%)	20,970 (35.0%)	
Socioeconomic position (assets)			
Low	29,107 (23.6%)	24,070 (24.6%)	0.002
Middle	30,201 (30.1%)	23,557 (30.3%)	
High	30,068 (46.3%)	22,911 (45.1%)	
Study area			
Rural	30,142 (24.1%)	25,632 (25.4%)	<0.001
Urban	59,234 (75.9%)	44,906 (74.6%)	
Altitude			
≤500 m.a.s.l.	43,316 (59.9%)	34,757 (61.6%)	<0.001
501–2500 m.a.s.l.	17,850 (15.4%)	14,805 (16.0%)	
≥2501 m.a.s.l.	28,210 (24.7%)	20,976 (22.4%)	
Body mass index			
Mean (SD)	27.5 (5.0)	26.6 (4.4)	<0.001
Body mass index (categories)			
Normal (<25 kg/m ²)	30,048 (32.4%)	29,208 (38.0%)	<0.001
Overweight (25 to <30 kg/m ²)	36,006 (40.4%)	29,276 (43.0%)	
Obese (≥30 kg/m ²)	23,322 (27.2%)	12,054 (19.0%)	
Blood pressure levels			
Systolic blood pressure, mean (SD)	118.4 (16.7)	127.4 (15.3)	<0.001
Diastolic blood pressure, mean (SD)	70.3 (9.3)	74.7 (9.9)	<0.001
Hypertension			
Yes	13,690 (19.5%)	13,660 (23.2%)	<0.001

Note:

SD, Standard deviation; m.a.s.l. = meters above the sea level.

for interaction term = 0.001), and among those living under 500 meters above sea level (*p*-value for interaction term = 0.005). On the other hand, all the socio-demographic and geographical variables studied were effect modifiers of the association between BMI and DBP (Figs. 3A–3F): it was stronger among males (*p*-value for interaction terms <0.001), among older individuals (*p*-value for interaction term <0.001), better educated (*p*-value for interaction terms <0.001), those with low socioeconomic position (*p*-value for

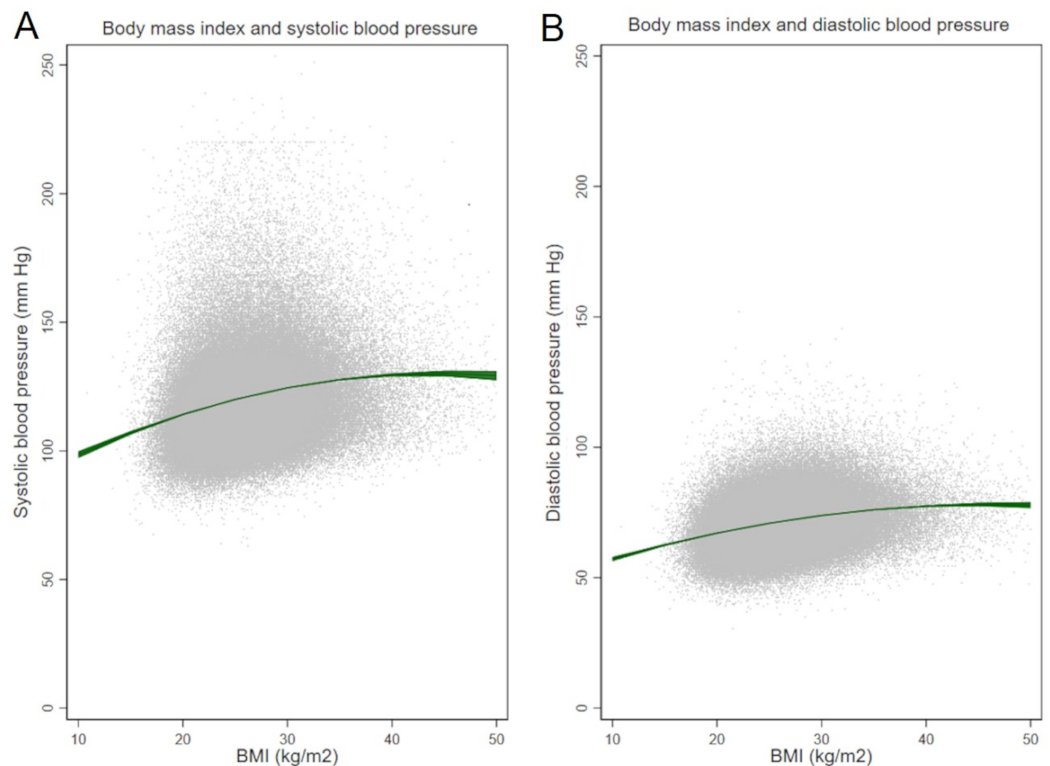


Figure 1 Body mass index and (A) systolic and (B) diastolic blood pressure.

Full-size  DOI: [10.7717/peerj.11307/fig-1](https://doi.org/10.7717/peerj.11307/fig-1)

interaction terms <0.001), those in urban areas (p -value for interaction terms <0.001), and among those living at high altitude (p -value for interaction terms <0.001). Coefficients and 95% CI are shown in the Supporting Information file: [Tables S1 to S7](#). All the tolerance values for collinearity were <5 .

When the analyses were conducted excluding subjects taking anti-hypertensive medication, results and figures were similar to those shown as main results as only about a third (30.4%) of participants with hypertension reported taking antihypertensive pharmacological medication (Details in the Supporting Information file: [Tables S8 to S12](#)).

DISCUSSION

Using nationally representative data from Peru, accrued over five years in approximately 160,000 subjects, we advance the evidence reported on the association between BMI and blood pressure by exploring the effect of relevant socio-economic health determinants, namely sex, age, education level, socioeconomic position, study area, and altitude, much needed for adequate resource allocation. Whilst the effect modification in the relationship between BMI and DBP was present in all of these subgroups, socioeconomic position and study area were not effect modifiers in the association between BMI and SBP.

The global rise of levels of BMI and blood pressure calls for paying attention at particular groups; hence, our results disaggregated by socio-demographic groups show clear patterns of association between SBP and DBP when BMI increases. These results, for

Table 2 Estimation of blood pressure levels according to body mass index (BMI): in the total sample and excluding those with anti-hypertensive medication.

BMI (in kg/m ²)	In the overall sample	Only those without antihypertensive medication
	<i>Systolic blood pressure (mm Hg)</i>	
10	98.5 (97.2–99.9)	98.5 (97.2–99.8)
15	107.0 (106.3–107.7)	106.8 (106.1–107.5)
20	114.2 (113.9–114.5)	113.7 (113.4–114.0)
25	120.0 (119.8–120.2)	119.4 (119.2–119.6)
30	124.5 (124.3–124.7)	123.8 (123.6–124.0)
35	127.7 (127.4–128.0)	126.9 (126.6–127.1)
40	129.6 (128.9–130.2)	128.6 (128.0–129.2)
45	130.1 (129.0–131.2)	129.1 (128.0–130.2)
50	129.3 (127.4–131.2)	128.3 (126.5–130.1)
	<i>Diastolic blood pressure (mm Hg)</i>	
10	56.2 (56.4–58.0)	57.1 (56.3–58.0)
15	62.5 (62.1–63.0)	62.4 (62.0–62.9)
20	67.1 (66.9–67.3)	67.0 (66.8–67.1)
25	70.9 (70.8–71.0)	70.7 (70.6–70.8)
30	73.9 (73.8–74.0)	73.7 (73.6–73.8)
35	76.1 (75.9–76.2)	75.9 (75.7–76.1)
40	77.5 (77.1–77.8)	77.3 (76.9–77.7)
45	78.1 (77.4–78.8)	78.0 (77.2–78.7)
50	77.9 (76.7–79.0)	77.8 (76.6–79.0)

Note:

Marginal estimates were built on adjusted models.

countries in transition, can inform tailored prevention and control strategies to counter the rise in levels of blood pressure and BMI, focusing on specific groups to yield higher prevention gains and further population-wide benefits. It is notorious the role of sex, but the peculiarities of area, including living in high altitude areas, as well as education, may be also important. Interventions or treatment allocation to improve BMI and blood pressure may not need different approaches by different socio-demographic variables, but could benefit of gender-based tailoring to maximize its impact.

Globally, mean blood pressure levels are higher in African countries, and Peru ranks among the countries with lowest mean blood pressure in the world (*NCD Risk Factor Collaboration (NCD-RisC)—Americas Working Group, 2020*; *NCD Risk Factor Collaboration (NCD-RisC), 2017a*). Much of the literature on the relationship between BMI and blood pressure arises from Asia and some parts of Africa (*Danon-Hersch et al., 2007*; *Tesfaye et al., 2007*). Importantly, a nationwide study of 1.7 million Chinese adults explored similar relationships between BMI and blood pressure across a diversity of groups (*Linderman et al., 2018*), with some notorious observations contrasting our findings. Compared to our Peruvian sample, Chinese individuals had approximately 2.5 kg/m² units lower than Peruvians (24.7 vs. 27.1 kg/m²), yet their SBP was 14 mmHg higher (136.5 vs. 122.4 mmHg), and DBP was 9 mmHg higher (81.1 vs. 72.2 mmHg). While both

Table 3 Estimation of blood pressure levels according to body mass index (BMI) by sex.

BMI (in kg/m ²)	Females		Males	
	In the overall sample	Only those without antihypertensive medication	In the overall sample	Only those without antihypertensive medication
<i>Systolic blood pressure (mm Hg)</i>				
10	97.0 (95.3–98.6)	97.4 (95.8–99.0)	100.2 (98.0–102.4)	99.6 (97.5–101.7)
15	104.2 (103.3–105.1)	104.0 (103.2–104.9)	110.2 (109.1–111.4)	109.8 (108.8–110.9)
20	110.4 (110.0–110.8)	109.8 (109.4–110.2)	118.6 (118.1–119.0)	118.3 (117.9–118.8)
25	115.5 (115.3–115.8)	114.6 (114.4–114.8)	125.2 (125.0–125.5)	125.0 (124.8–125.2)
30	119.7 (119.4–119.9)	118.6 (118.3–118.8)	130.2 (129.9–130.5)	129.9 (129.6–130.2)
35	122.7 (122.4–123.1)	121.6 (121.2–121.9)	133.6 (133.1–134.1)	133.1 (132.6–133.6)
40	124.8 (124.0–125.5)	123.6 (122.9–124.4)	135.2 (134.1–136.3)	134.4 (133.4–135.5)
45	125.8 (124.4–127.1)	124.8 (123.5–126.2)	135.2 (133.2–137.2)	134.1 (132.1–136.0)
50	125.8 (123.5–128.0)	125.1 (122.9–127.3)	133.5 (130.2–136.8)	131.9 (128.8–135.1)
<i>Diastolic blood pressure (mm Hg)</i>				
10	56.8 (55.7–57.8)	57.0 (55.9–58.0)	58.1 (56.7–59.5)	57.7 (56.3–59.0)
15	61.5 (60.9–62.0)	61.5 (60.9–62.0)	64.0 (63.3–64.7)	63.7 (63.0–64.4)
20	65.5 (65.2–65.7)	65.3 (65.0–65.6)	69.1 (68.8–69.4)	68.9 (68.6–69.2)
25	68.8 (68.7–68.9)	68.5 (68.4–68.7)	73.3 (73.2–73.5)	73.2 (73.1–73.4)
30	71.4 (71.3–71.6)	71.1 (71.0–71.3)	76.8 (76.6–77.0)	76.7 (76.5–76.9)
35	73.4 (73.2–73.6)	73.1 (72.9–73.3)	79.4 (79.1–79.8)	79.3 (78.9–79.6)
40	74.7 (74.2–75.1)	74.5 (74.0–74.9)	81.2 (80.5–82.0)	81.0 (80.2–81.8)
45	75.3 (74.5–76.1)	75.2 (74.4–76.1)	82.2 (80.8–83.7)	81.9 (80.4–83.3)
50	75.2 (73.8–76.5)	75.3 (73.9–76.7)	82.4 (80.1–84.7)	81.8 (79.5–84.1)

Note:

Marginal estimates were built on adjusted models.

studies confirm a relationship between BMI and blood pressure across a range of groups, the trajectories of SBP values in Peruvians range between 100 and 140 mmHg in all the groups studied (Fig. 2), whereas Chinese SBP values reach up to 150 mmHg and 160 mmHg in some cases (Linderman et al., 2018). In Latin America, one previous study from Brazil, focused on a single state, analyzed the association between two anthropometric indexes, waist circumference and BMI, and hypertension and found both indexes associated with hypertension, but showed a low sensitivity as predictors (Peixoto Mdo et al., 2006).

Our observations, benefiting from nationwide representative data, are useful not only in describing the patterns of the relationships between BMI and blood pressure, but also in adequately informing policies. Such tailored policies are needed as premature non-avertable mortality from non-communicable diseases decreased slightly or stagnated in most regions, and rose in the region of the Americas (Martinez et al., 2020). Therefore, characterizing the patterns of the BMI-blood pressure relationship are crucial in the Latin American region, particularly given the high level of heterogeneity in the transition

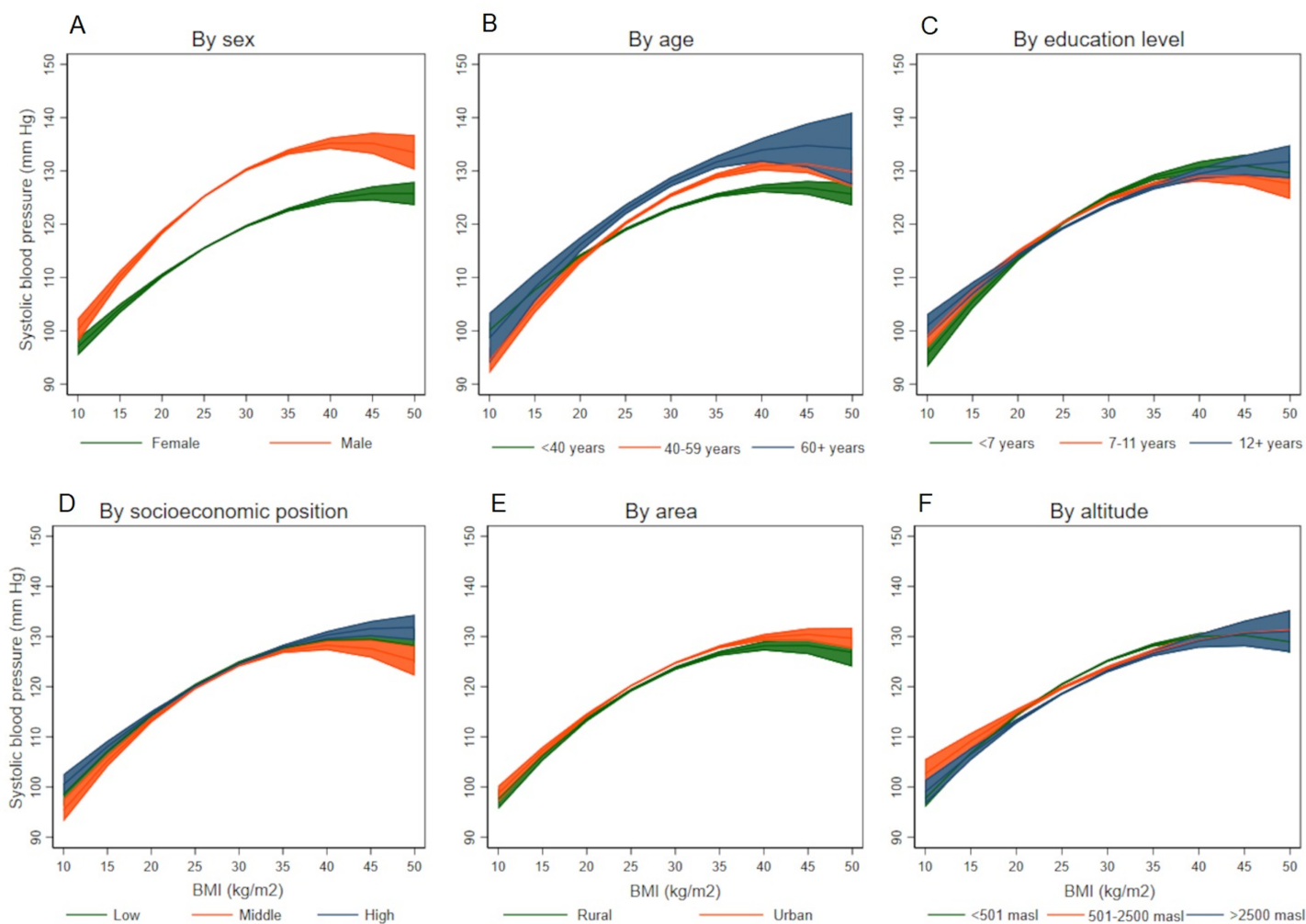


Figure 2 Association between body mass index and systolic blood pressure according to socio-demographic variables. (A) By sex, (B) by age, (C) by education level, (D) by socioeconomic position, (E) by area, and (F) by altitude. [Full-size !\[\]\(1663bb69f307a960345edb0e712f8c02_img.jpg\) DOI: 10.7717/peerj.11307/fig-2](https://doi.org/10.7717/peerj.11307/fig-2)

of major cardiovascular risk factors in the region (*NCD Risk Factor Collaboration (NCD-RisC)—Americas Working Group, 2020*).

Peru is a middle-income country located in South America, with a fragile and fragmented health care system, with poor response to the challenges of chronic conditions, and for instance, may not be prepared to tackle the burden of increasing BMI and blood pressure levels (*Loret de Mola et al., 2014*). A recent manuscript demonstrated an increasing age-standardized prevalence of hypertension in the last years in Peru, whereas the rates of disease awareness and controlled hypertension have declined (*Villarreal-Zegarra, Carrillo-Larco & Bernabe-Ortiz, 2020*). Our results demonstrated slightly change in blood pressure estimates in the overall sample and when excluding those with anti-hypertensive medication pointed out the low rates of appropriate treatment and control (*Zavala-Loayza et al., 2016*). Thus, a thoroughly planned and balanced policy would be needed to provide care to those who most needed, including appropriate hypertension diagnosis and treatment.

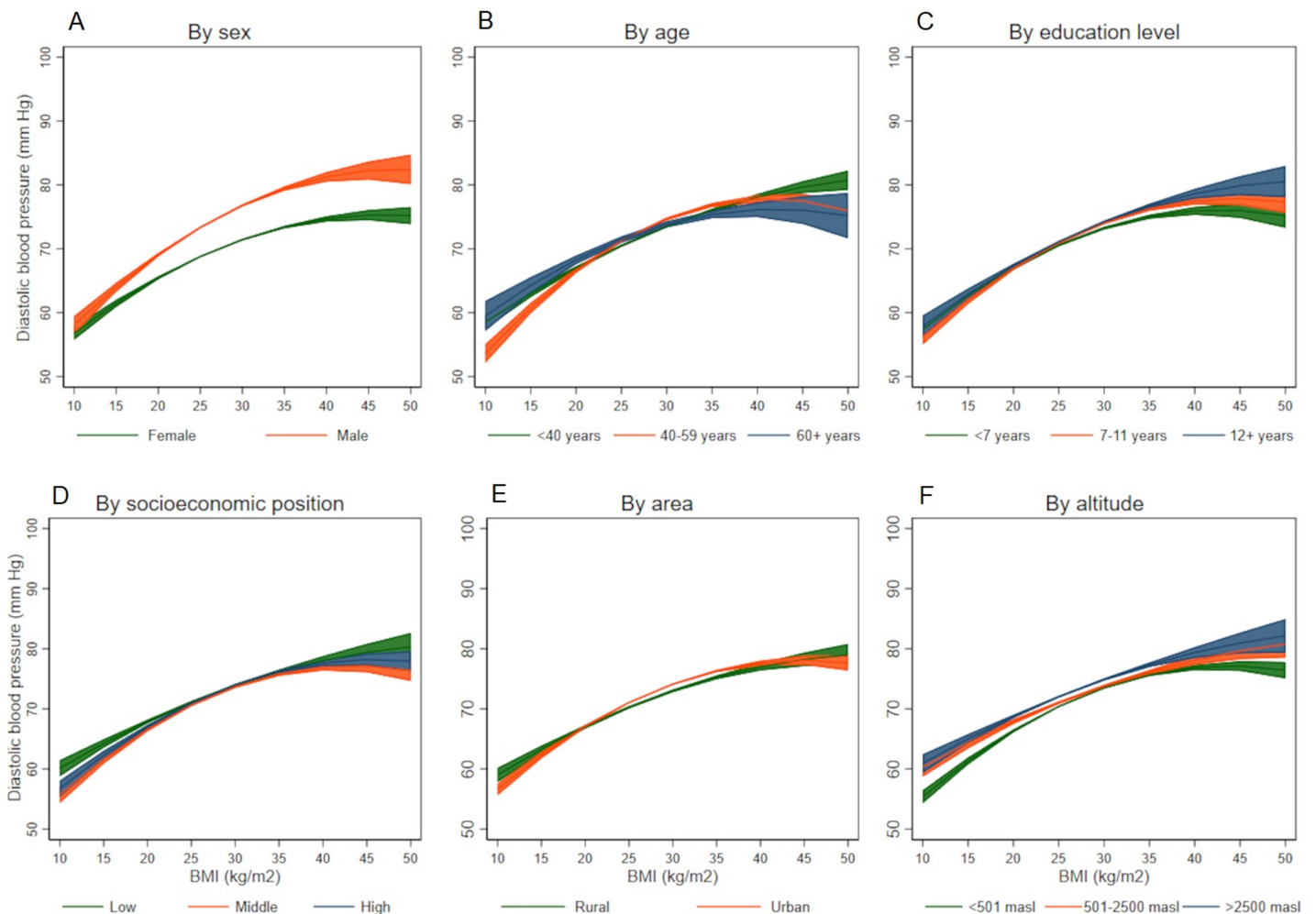


Figure 3 Association between body mass index and diastolic blood pressure according to socio-demographic variables. (A) By sex, (B) by age, (C) by education level, (D) by socioeconomic position, (E) by area, and (F) by altitude. [Full-size !\[\]\(ba1b80118482ccef74a5d718ca4d7242_img.jpg\) DOI: 10.7717/peerj.11307/fig-3](https://doi.org/10.7717/peerj.11307/fig-3)

This study benefits from data derived from a nationally representative survey of adult population, with objective measurements, and a robust modeling approach that goes beyond linear associations. Our study expands to disentangle relationships across a diversity of socioeconomic and geographical population groups, much needed to characterize the epidemiology of BMI and blood pressure, and to inform policies. Despite this, we are aware of certain limitations including the cross-sectional nature of the data, together with potential for reverse causality. Given that both, obesity and high blood pressure are established global public health priorities, both require urgent action to prevent their associated complications. Also, the graphical nature of the BMI-blood pressure trajectories should be interpreted with caution as comparisons of levels of blood pressure across BMI groups are not necessarily correct, but rather the result of calculations of blood pressure values given a value of BMI. Whilst we cannot ascertain that a given group has a number of blood pressure units, higher or lower, than other group, the trajectories are useful in identifying potential groups to target action, e.g., males

compared to females. In addition, across the years, the sampling frame of the ENDES survey has changed; for example, the sampling frame of the last two years is not the same as in the previous years. However, where relevant, we used the year-specific sampling weights, stratum and sampling units. Other variables (e.g., dietary consumption, physical activity, and comorbidities) were not included in the models as they were not available.

CONCLUSIONS

In conclusion, greater BMI is associated with higher blood pressure levels in Peru, but this association is not uniform across a range of socio-demographic and geographical population groups. These results may contribute to prevention and control strategies to counter the rise in levels of blood pressure and BMI, focusing on specific groups to yield higher prevention gains and further population-wide benefits.

ADDITIONAL INFORMATION AND DECLARATIONS

Funding

Rodrigo M. Carrillo-Larco is supported by a Wellcome Trust International Training Fellowship, London, UK (214185/Z/18/Z). The funders had no role in study design, data collection and analysis, decision to publish, or preparation of the manuscript.

Grant Disclosures

The following grant information was disclosed by the authors:
Wellcome Trust International Training Fellowship, London, UK: 214185/Z/18/Z.

Competing Interests

The authors declare that they have no competing interests.

Author Contributions

- Antonio Bernabe-Ortiz conceived and designed the experiments, performed the experiments, analyzed the data, prepared figures and/or tables, authored or reviewed drafts of the paper, and approved the final draft.
- Rodrigo M. Carrillo-Larco conceived and designed the experiments, performed the experiments, analyzed the data, prepared figures and/or tables, authored or reviewed drafts of the paper, and approved the final draft.
- J. Jaime Miranda performed the experiments, prepared figures and/or tables, authored or reviewed drafts of the paper, and approved the final draft.

Data Availability

The following information was supplied regarding data availability:

The data used in our study is anonymous and freely available to the general public and does not reveal any personal identifiable information, and consequently this study does not represent an ethical risk for participants. The INEI, a Peruvian government organization, is responsible for the annual collection of ENDES data. This institution requested the

consent of participants before the survey. Data is available at <http://inei.inei.gob.pe/microdatos/>.

Supplemental Information

Supplemental information for this article can be found online at <http://dx.doi.org/10.7717/peerj.11307#supplemental-information>.

REFERENCES

- Chobanian AV, Bakris GL, Black HR, Cushman WC, Green LA, Izzo JL Jr, Jones DW, Materson BJ, Oparil S, Wright JT Jr, Roccella EJ. 2003. The seventh report of the joint national committee on prevention, detection, evaluation, and treatment of high blood pressure: the JNC 7 report. *JAMA* 289(19):2560–2572 DOI 10.1001/jama.289.19.2560.
- Danon-Hersch N, Chiolero A, Shamlaye C, Paccaud F, Bovet P. 2007. Decreasing association between body mass index and blood pressure over time. *Epidemiology* 18(4):493–500 DOI 10.1097/EDE.0b013e318063eebf.
- Drøyvold WB, Midthjell K, Nilsen TI, Holmen J. 2005. Change in body mass index and its impact on blood pressure: a prospective population study. *International Journal of Obesity* 29(6):650–655 DOI 10.1038/sj.ijo.0802944.
- Gelber RP, Gaziano JM, Manson JE, Buring JE, Sesso HD. 2007. A prospective study of body mass index and the risk of developing hypertension in men. *American Journal of Hypertension* 20(4):370–377 DOI 10.1016/j.amjhyper.2006.10.011.
- Graubard BI, Korn EL. 1999. Predictive margins with survey data. *Biometrics* 55(2):652–659 DOI 10.1111/j.0006-341X.1999.00652.x.
- Hubert HB, Feinleib M, McNamara PM, Castelli WP. 1983. Obesity as an independent risk factor for cardiovascular disease: a 26-year follow-up of participants in the Framingham Heart Study. *Circulation* 67(5):968–977 DOI 10.1161/01.CIR.67.5.968.
- Instituto Nacional de Estadística e Informática. 2015. *Peru: Encuesta Demográfica y de Salud Familiar ENDES 2014*. Lima, Peru: INEI.
- Instituto Nacional de Estadística e Informática. 2018. *Manual de la entrevistadora—Encuesta demográfica y de salud familiar*. Lima, Peru: INEI.
- Kerry SM, Micah FB, Plange-Rhule J, Eastwood JB, Cappuccio FP. 2005. Blood pressure and body mass index in lean rural and semi-urban subjects in West Africa. *Journal of Hypertension* 23(9):1645–1651 DOI 10.1097/01.hjh.0000177536.53409.1a.
- Lim SS, Vos T, Flaxman AD, Danaei G, Shibuya K, Adair-Rohani H, Amann M, Anderson HR, Andrews KG, Aryee M, Atkinson C, Bacchus LJ, Bahalim AN, Balakrishnan K, Balmes J, Barker-Collo S, Baxter A, Bell ML, Blore JD, Blyth F, Bonner C, Borges G, Bourne R, Boussinesq M, Brauer M, Brooks P, Bruce NG, Brunekreef B, Bryan-Hancock C, Bucello C, Buchbinder R, Bull F, Burnett RT, Byers TE, Calabria B, Carapetis J, Carnahan E, Chafe Z, Charlson F, Chen H, Chen JS, Cheng AT, Child JC, Cohen A, Colson KE, Cowie BC, Darby S, Darling S, Davis A, Degenhardt L, Dentener F, Des Jarlais DC, Devries K, Dherani M, Ding EL, Dorsey ER, Driscoll T, Edmond K, Ali SE, Engell RE, Erwin PJ, Fahimi S, Falder G, Farzadfar F, Ferrari A, Finucane MM, Flaxman S, Fowkes FG, Freedman G, Freeman MK, Gakidou E, Ghosh S, Giovannucci E, Gmel G, Graham K, Grainger R, Grant B, Gunnell D, Gutierrez HR, Hall W, Hoek HW, Hogan A, Hosgood HD III, Hoy D, Hu H, Hubbell BJ, Hutchings SJ, Ibeanusi SE, Jacklyn GL, Jasrasaria R, Jonas JB, Kan H, Kanis JA, Kassebaum N, Kawakami N, Khang YH, Khatibzadeh S, Khoo JP, Kok C, Laden F, Lalloo R, Lan Q, Lathlean T, Leasher JL, Leigh J, Li Y, Lin JK, Lipshultz SE, London S, Lozano R, Lu Y,

- Mak J, Malekzadeh R, Mallinger L, Marcenes W, March L, Marks R, Martin R, McGale P, McGrath J, Mehta S, Mensah GA, Merriman TR, Micha R, Michaud C, Mishra V, Mohd Hanafiah K, Mokdad AA, Morawska L, Mozaffarian D, Murphy T, Naghavi M, Neal B, Nelson PK, Nolla JM, Norman R, Olives C, Omer SB, Orchard J, Osborne R, Ostro B, Page A, Pandey KD, Parry CD, Passmore E, Patra J, Pearce N, Pelizzari PM, Petzold M, Phillips MR, Pope D, Pope CA III, Powles J, Rao M, Razavi H, Rehfuss EA, Rehm JT, Ritz B, Rivara FP, Roberts T, Robinson C, Rodriguez-Portales JA, Romieu I, Room R, Rosenfeld LC, Roy A, Rushton L, Salomon JA, Sampson U, Sanchez-Riera L, Sanman E, Sapkota A, Seedat S, Shi P, Shield K, Shivakoti R, Singh GM, Sleet DA, Smith E, Smith KR, Stapelberg NJ, Steenland K, Stöckl H, Stovner LJ, Straif K, Straney L, Thurston GD, Tran JH, Van Dingenen R, van Donkelaar A, Veerman JL, Vijayakumar L, Weintraub R, Weissman MM, White RA, Whiteford H, Wiersma ST, Wilkinson JD, Williams HC, Williams W. 2012. A comparative risk assessment of burden of disease and injury attributable to 67 risk factors and risk factor clusters in 21 regions, 1990–2010: a systematic analysis for the Global Burden of Disease Study 2010. *Lancet* **380**(9859):2224–2260 DOI [10.1016/S0140-6736\(12\)61766-8](https://doi.org/10.1016/S0140-6736(12)61766-8).
- Linderman GC, Lu J, Lu Y, Sun X, Xu W, Nasir K, Schulz W, Jiang L, Krumholz HM. 2018. Association of body mass index with blood pressure among 1.7 million Chinese adults. *JAMA Network Open* **1**(4):e181271 DOI [10.1001/jamanetworkopen.2018.1271](https://doi.org/10.1001/jamanetworkopen.2018.1271).
- Loret de Mola C, Quispe R, Valle GA, Poterico JA. 2014. Nutritional transition in children under five years and women of reproductive age: a 15-years trend analysis in Peru. *PLOS ONE* **9**(3):e92550 DOI [10.1371/journal.pone.0092550](https://doi.org/10.1371/journal.pone.0092550).
- Martinez R, Lloyd-Sherlock P, Soliz P, Ebrahim S, Vega E, Ordunez P, McKee M. 2020. Trends in premature avertable mortality from non-communicable diseases for 195 countries and territories, 1990–2017: a population-based study. *Lancet Global Health* **8**(4):e511–e523 DOI [10.1016/S2214-109X\(20\)30035-8](https://doi.org/10.1016/S2214-109X(20)30035-8).
- NCD Risk Factor Collaboration (NCD-RisC)—Americas Working Group. 2020. Trends in cardiometabolic risk factors in the Americas between 1980 and 2014: a pooled analysis of population-based surveys. *Lancet Global Health* **8**(1):e123–e133 DOI [10.1016/S2214-109X\(19\)30484-X](https://doi.org/10.1016/S2214-109X(19)30484-X).
- NCD Risk Factor Collaboration (NCD-RisC). 2017a. Worldwide trends in blood pressure from 1975 to 2015: a pooled analysis of 1479 population-based measurement studies with 19.1 million participants. *Lancet* **389**(10064):37–55 DOI [10.1016/S0140-6736\(16\)31919-5](https://doi.org/10.1016/S0140-6736(16)31919-5).
- NCD Risk Factor Collaboration (NCD-RisC). 2017b. Worldwide trends in body-mass index, underweight, overweight, and obesity from 1975 to 2016: a pooled analysis of 2416 population-based measurement studies in 128.9 million children, adolescents, and adults. *The Lancet* **390**(10113):2627–2642 DOI [10.1016/S0140-6736\(17\)32129-3](https://doi.org/10.1016/S0140-6736(17)32129-3).
- NCD Risk Factor Collaboration (NCD-RisC). 2019. Rising rural body-mass index is the main driver of the global obesity epidemic in adults. *Nature* **569**(7755):260–264 DOI [10.1038/s41586-019-1171-x](https://doi.org/10.1038/s41586-019-1171-x).
- Peixoto Mdo R, Benício MH, Latorre Mdo R, Jardim PC. 2006. Waist circumference and body mass index as predictors of hypertension. *Arquivos Brasileiros De Cardiologia* **87**(4):462–470 DOI [10.1590/S0066-782X2006001700011](https://doi.org/10.1590/S0066-782X2006001700011).
- Rao JNK, Scott AJ. 1984. On Chi-squared tests for multiway contingency tables with cell proportions estimated from survey data. *The Annals of Statistics* **12**(1):46–60 DOI [10.1214/aos/1176346391](https://doi.org/10.1214/aos/1176346391).

- Rutstein SO, Johnson K. 2004.** *The DHS wealth index. DHS comparative reports no. 6.* Calverton, Maryland: ORC Macro.
- Takahashi H, Yoshika M, Yokoi T. 2015.** Validation of three automatic devices for the self-measurement of blood pressure according to the European Society of Hypertension International Protocol revision 2010: the Omron HEM-7130, HEM-7320F, and HEM-7500F. *Blood Pressure Monitoring* **20(2)**:92–97 DOI [10.1097/MBP.0000000000000096](https://doi.org/10.1097/MBP.0000000000000096).
- Tesfaye F, Nawi NG, Van Minh H, Byass P, Berhane Y, Bonita R, Wall S. 2007.** Association between body mass index and blood pressure across three populations in Africa and Asia. *Journal of Human Hypertension* **21(1)**:28–37 DOI [10.1038/sj.jhh.1002104](https://doi.org/10.1038/sj.jhh.1002104).
- Villarreal-Zegarra D, Carrillo-Larco RM, Bernabe-Ortiz A. 2020.** Short-term trends in the prevalence, awareness, treatment, and control of arterial hypertension in Peru. *Journal of Human Hypertension* **390(Suppl 2)**:1211 DOI [10.1038/s41371-020-0361-1](https://doi.org/10.1038/s41371-020-0361-1).
- West BT, Berglund P, Heeringa SG. 2008.** A closer examination of subpopulation analysis of complex-sample survey data. *The Stata Journal: Promoting Communications on Statistics and Stata* **8(4)**:520–531 DOI [10.1177/1536867X0800800404](https://doi.org/10.1177/1536867X0800800404).
- Williams R. 2012.** Using the margins command to estimate and interpret adjusted predictions and marginal effects. *The Stata Journal: Promoting Communications on Statistics and Stata* **12(2)**:308–331 DOI [10.1177/1536867X1201200209](https://doi.org/10.1177/1536867X1201200209).
- Zavala-Loayza JA, Benziger CP, Cárdenas MK, Carrillo-Larco RM, Bernabé-Ortiz A, Gilman RH, Checkley W, Miranda JJ. 2016.** Characteristics associated with antihypertensive treatment and blood pressure control: a population-based follow-up study in Peru. *Global Heart* **11(1)**:109–119 DOI [10.1016/j.gheart.2015.12.002](https://doi.org/10.1016/j.gheart.2015.12.002).