

## RESEARCH ARTICLE

# The influence of travel time to health facilities on stillbirths: A geospatial case-control analysis of facility-based data in Gombe, Nigeria

Oghenebrume Wariri<sup>1,2\*</sup>, Egwu Onuwabuchi<sup>2,3</sup>, Jacob Albin Korem Alhassan<sup>2,4</sup>, Eseoghene Dase<sup>2,5</sup>, Iliya Jalo<sup>6</sup>, Christopher Hassan Laima<sup>3</sup>, Halima Usman Farouk<sup>3</sup>, Aliyu U. El-Nafaty<sup>3‡</sup>, Uduak Okomo<sup>1‡</sup>, Winfred Dotse-Gborgbortsi<sup>7,8‡</sup>



**1** Vaccines and Immunity Theme, MRC Unit The Gambia at the London School of Hygiene and Tropical Medicine, Fajara, The Gambia, **2** African Population and Health Policy Initiative, Gombe, Gombe State, Nigeria, **3** Department of Obstetrics and Gynaecology, Federal Teaching Hospital Gombe, Gombe, Nigeria, **4** Department of Community Health and Epidemiology, College of Medicine, University of Saskatchewan, Saskatoon, Canada, **5** Department of Obstetrics and Gynaecology, Cedarcrest Hospital, Abuja, Nigeria, **6** Department of Paediatrics, Federal Teaching Hospital Gombe, Gombe, Nigeria, **7** School of Geography and Environmental Science, University of Southampton, Southampton, United Kingdom, **8** WorldPop Research Group, School of Geography and Environmental Science, University of Southampton, Southampton, United Kingdom

‡ These authors are joint senior authors on this work.

\* [Oghenebrume.Wariri@lshtm.ac.uk](mailto:Oghenebrume.Wariri@lshtm.ac.uk)

## OPEN ACCESS

**Citation:** Wariri O, Onuwabuchi E, Alhassan JAK, Dase E, Jalo I, Laima CH, et al. (2021) The influence of travel time to health facilities on stillbirths: A geospatial case-control analysis of facility-based data in Gombe, Nigeria. *PLoS ONE* 16(1): e0245297. <https://doi.org/10.1371/journal.pone.0245297>

**Editor:** Frank T. Spradley, University of Mississippi Medical Center, UNITED STATES

**Received:** September 23, 2020

**Accepted:** December 24, 2020

**Published:** January 7, 2021

**Peer Review History:** PLOS recognizes the benefits of transparency in the peer review process; therefore, we enable the publication of all of the content of peer review and author responses alongside final, published articles. The editorial history of this article is available here: <https://doi.org/10.1371/journal.pone.0245297>

**Copyright:** © 2021 Wariri et al. This is an open access article distributed under the terms of the [Creative Commons Attribution License](https://creativecommons.org/licenses/by/4.0/), which permits unrestricted use, distribution, and reproduction in any medium, provided the original author and source are credited.

**Data Availability Statement:** All relevant data are within the manuscript and its [Supporting information](#) files.

## Abstract

Access to quality emergency obstetric and newborn care (EmONC); having a skilled attendant at birth (SBA); adequate antenatal care; and efficient referral systems are considered the most effective interventions in preventing stillbirths. We determined the influence of travel time from mother's area of residence to a tertiary health facility where women sought care on the likelihood of delivering a stillbirth. We carried out a prospective matched case-control study between 1st January 2019 and 31st December 2019 at the Federal Teaching Hospital Gombe (FTHG), Nigeria. All women who experienced a stillbirth after hospital admission during the study period were included as cases while controls were consecutive age-matched (ratio 1:1) women who experienced a live birth. We modelled travel time to health facilities. To determine how travel time to the nearest health facility and the FTHG were predictive of the likelihood of stillbirths, we fitted a conditional logistic regression model. A total of 318 women, including 159 who had stillborn babies (cases) and 159 age-matched women who had live births (controls) were included. We did not observe any significant difference in the mean travel time to the nearest government health facility for women who had experienced a stillbirth compared to those who had a live birth [9.3 mins (SD 7.3, 11.2) vs 6.9 mins (SD 5.1, 8.7) respectively,  $p = 0.077$ ]. However, women who experienced a stillbirth had twice the mean travel time of women who had a live birth (26.3 vs 14.5 mins) when measured from their area of residence to the FTHG where deliveries occurred. Women who lived farther than 60 minutes were 12 times more likely of having a stillborn [OR = 12 (1.8, 24.3),  $p = 0.011$ ] compared to those who lived within 15 minutes travel time to

**Funding:** The author(s) received no specific funding for this work.

**Competing interests:** The authors have declared that no competing interests exist.

the FTHG. We have shown for the first time, the influence of travel time to a major tertiary referral health facility on the occurrence of stillbirths in an urban city in, northeast Nigeria.

## Background

An estimated 2.6 million stillbirths are recorded globally every year, with the majority disproportionately occurring in low- and middle-income countries (LMIC), particularly in sub-Saharan Africa [1]. The World Health Organization (WHO) defines stillbirth as any third trimester foetal death ( $\geq 28$  weeks' gestation) or death of a newborn during childbirth [2]. While the average stillbirth rate (SBR) in many high-income countries range between 2–5 per 1000 births, the rates reported in LMICs are more than ten-fold higher [1]. Nigeria ranked second among the top ten high stillbirth burden countries and had the second highest SBR globally in 2015 [1]. In 2014, the World Health Assembly-backed *Every Newborn Action Plan* (ENAP) acknowledged the need to reduce stillbirths occurring in LMICs thereby setting a global target to reduce SBR to 12 or fewer stillbirths per 1000 births in all countries by 2030 [3]. To achieve this ambitious ENAP stillbirth target by 2030, evidence-based and data-driven policy interventions targeted at the individual level, the broader health system and socioeconomic disadvantages which determine overall health in the first instance must be prioritised.

The timing of a stillbirth reflects different aspects of maternal health care. An antepartum stillbirth (APSB), is said to have occurred when a baby dies in the mother's womb before the onset of labour (typically more than 12 hours before delivery) and reflects the quality of antenatal care accessible before and during pregnancy [4, 5]. An intrapartum stillbirth (IPSB) is defined as fetal death during labour, or within 12 hours before delivery, and reflects the quality of obstetric and newborn care available to a pregnant woman during labour, birth and immediately after birth [4, 5]. About half of stillbirths are intrapartum, and the majority are considered preventable [1]. Research and interventions targeted at maternal and fetal medical causes of stillbirths have received relatively more attention. However, there is evidence to suggest that limited physical accessibility to quality obstetric and newborn care and adverse socioeconomic determinants of health contribute to stillbirths [6].

Access to quality emergency obstetric and newborn care (EmONC); having a skilled attendant at birth (SBA); adequate antenatal care; and efficient referral systems are considered the most effective interventions to prevent adverse pregnancy outcomes [7]. However, in many LMICs, access to SBA or EmONC services can be difficult due to several delays, especially for populations living in rural settings or urban slums where access to roads and means of transportation are suboptimal, rarely available, or unaffordable [8–10].

The 'three delays' conceptual framework developed by Thaddeus and Maine identifies three groups of factors or delays which may limit access to maternal health services leading to mortality [11]. These challenges are the delay in deciding to seek care, delay in arrival at a well-equipped health facility and the delay in receiving adequate care. The existing literature suggests that difficulties in geographic accessibility to facilities which provide maternal health services may indirectly contribute to the first-level delay by creating a lack of interest to seek care, and directly impact the second-level delay by increasing the travel time in reaching health facilities which provide life-saving services [12–14]. The delay in deciding and reaching a well-equipped health facility on time increases the likelihood of maternal and newborn complications such as stillbirths. Also, they reflect the broader health system performance and

responsiveness [6, 9, 15]. Therefore, IPSB is a sensitive marker of delays in the rapid delivery of a compromised fetus and low-quality care during childbirth.

Despite the substantial estimated burden of stillbirths in Nigeria, there is persistent inaccurate data on its predictors to inform appropriate policy interventions. Most studies focus on reporting stillbirth prevalence rates and exploring their clinical determinants [16–19]. Also, available studies investigated geographic accessibility factors known to strongly influence the use of skilled birth attendant and EmONC for pregnant women but not stillbirth outcome [20, 21]. Furthermore, existing local stillbirth literature shows substantial regional disparity as they are mainly focused on southern Nigeria [16–19].

To bridge the important evidence gap on the relationship between geographic accessibility and stillbirths, we set out to determine the influence of travel time from mother's home to the nearest government health facility and to the major tertiary health facility where they sought care on the likelihood of delivering a stillbirth.

## Methods

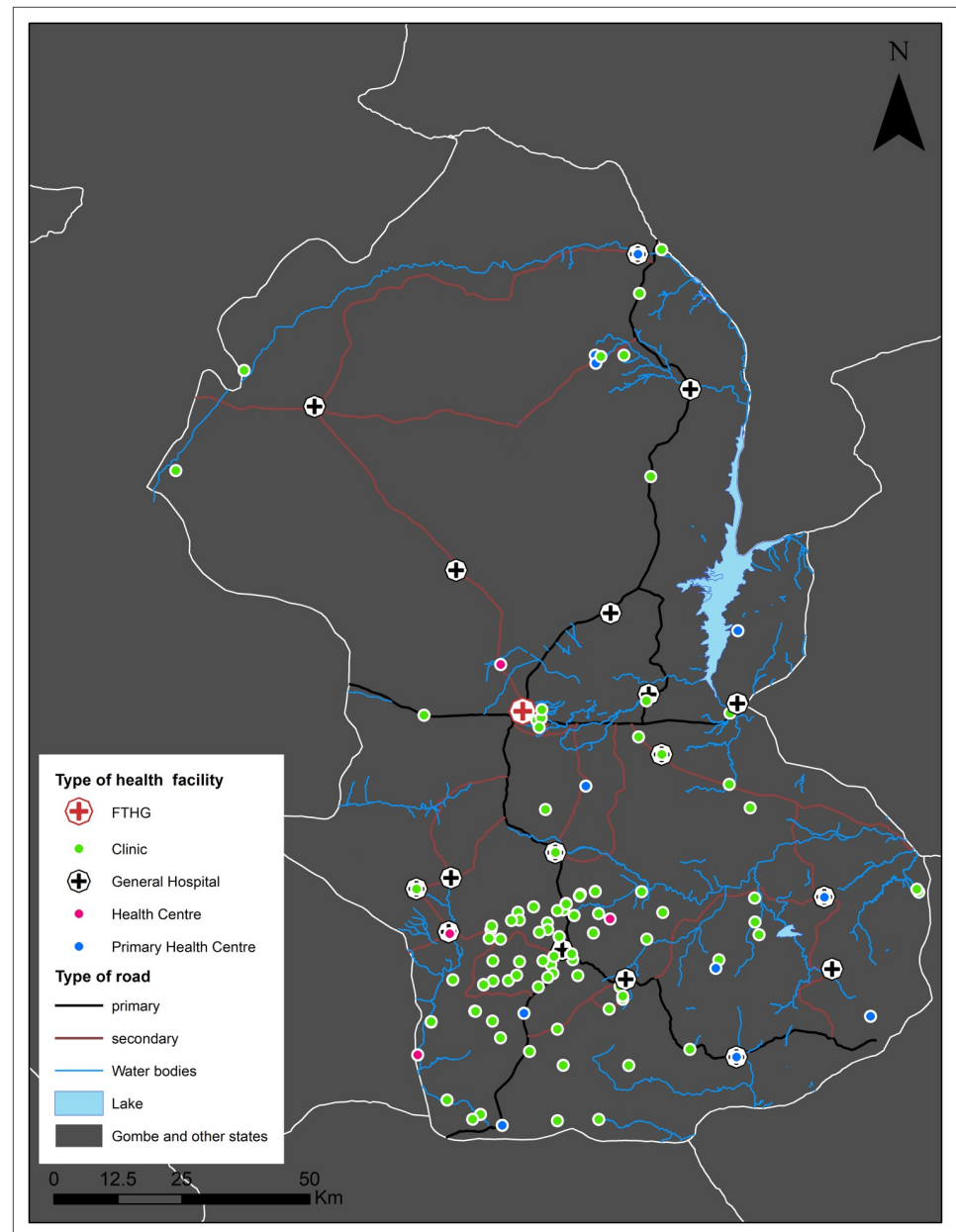
### Study setting

This study was conducted at the Federal Teaching Hospital, Gombe (FTHG), a major tertiary health facility located in Gombe City, the capital of Gombe State, northeast Nigeria. Gombe State shares borders with five other states, namely Adamawa, Bauchi, Borno, Taraba, and Yobe. Gombe State is predominantly rural, occupies a total land area of about 20,265sqkm, has an estimated population of 2.9 million people, a population density of 148 per km<sup>2</sup>, and an annual population growth rate of 4.05% [22, 23]. Most women access maternity services through state-funded public-sector primary and secondary health facilities. Gombe State has more than 600 public-sector and private health facilities spread across 11 Local Government Areas (the equivalent of a district) [24]. More than 90% of the health facilities in Gombe State are primary-level facilities offering basic preventative/curative care, while only about 4% are secondary and tertiary-level facilities offering specialised care [24]. Fig 1 shows the study area map.

The FTHG is the only tertiary hospital in Gombe (see Fig 1 for location). It has 450-bed capacity that offers specialised care, funded by the Federal (central) government, and receives referrals from Gombe and surrounding States. The hospital provides Comprehensive Emergency Obstetric and Newborn Care (CEmONC) and adequately staffed with obstetricians, gynaecologists, midwives, anaesthetists as well as neonatologists. They perform safe blood transfusion, caesarean sections, assisted vaginal delivery, and resuscitation of the newborn. The hospital records averagely 2,400 deliveries annually, with 27% of all births delivered by caesarean section. Between 2010 and 2018, the FTHG annual SBR ranged from 42 per 1000 births (95% CI:34,51) to 65 per 1000 births (95% CI: 55,76), with 52% of all stillbirths being intrapartum [26].

### Study design

We carried out a prospective case-control study at the Obstetrics department of the FTHG between 1st January 2019 and 31st December 2019. All women who experienced a stillbirth after hospital admission during the study period were included as cases while controls were consecutive age-matched women who experienced a live birth. The case to control ratio was 1:1 (i.e. individual matching), and age-matched controls were within two years standard deviation of their respective cases. Women whose pregnancies culminated in multiple births were excluded. Although we did not have a predetermined sample size, we consider that our sample can be representative of a larger population as we included all stillbirths (considered rare



**Fig 1. Study area showing roads, water bodies, and health facilities included in estimating travel times.** Note: This map was produced by the authors with administrative boundaries data from geoBoundaries [25].

<https://doi.org/10.1371/journal.pone.0245297.g001>

events) that occurred over a year period with their appropriate controls in our study setting—a major referral facility.

### Data collection

Written informed consent was obtained from all eligible women after delivery before a pre-tested, researcher administered questionnaire (*S1 File*) was used to collect information. The questionnaire was developed, pre-tested and adapted based on stillbirth data from our study setting [26]. In our study setting teenage marriage is common, thus, we considered the

participants who were below the age of 18 years (the traditional age of consenting in our setting) as ‘emancipated minors’ because all of them were already married [27]. Informed consent (rather than assent) was thus sought from these participants in a similar manner to those women who were 18 years or older. Data collected includes their obstetric history, social, economic, and demographic characteristics. Also, their mode of transport to the hospital and referral pathway before arriving at the FTHG for delivery were collected. Cases and their respective controls were approached with the study information after delivery and informed consent for participation in the study was sought. All participants were informed that participation in the study was voluntary and a decision not to participate will not impact the care they will normally receive post-delivery. There was a recruitment window lasting from the day of delivery until seven days afterwards to allow for some recovery from the stress of a stillbirth.

We geocoded the town address of participants using their house address and a smartphone to enable spatial analysis. All addresses were geocoded to the town level for confidentiality and privacy purposes. Due to the larger size and population density of Gombe City, we geocoded suburbs, generally at one square kilometre spatial resolution as towns and used their centroids. All other locations where women came from were geocoded as towns using OpenStreetMap [26]. Therefore, the suburbs of Gombe City and the other locations had relatively similar sizes.

For the location of health facilities, we included the geocoordinates of all government-run public health facilities near the residential areas of participants. The coordinates were obtained from an open-source spatial database of health facilities managed by the public health sector in sub-Saharan Africa curated by the WHO [28].

### Modelling travel time to health facilities

Travel time to health facilities was modelled in AccessMod5.0 [29]. Travel time was chosen to model physical geographic access because it is a better measure that incorporates elevation, road network, and travel speed among other factors that influence geographic accessibility compared to network and straight-line distances [30]. Furthermore, we used AccessMod5.0 because it is free software, simple to use and widely used for analysing geographic accessibility to health services [21, 31]. Travel times were modelled to two destinations, first to the nearest government health facility (i.e., public primary and secondary facilities, excluding dispensaries) then to FTHG (the major referral facility in Gombe) where all the cases and controls delivered their babies. To estimate travel times, we used land cover [32], roads and rivers [33], digital elevation model [34], and the location of health facilities [28]. The travel speed used to estimate travel times varied by road (primary =  $100\text{kmh}^{-1}$ , secondary =  $50\text{kmh}^{-1}$ , tertiary =  $30\text{kmh}^{-1}$ ) and land cover type adapted from previous studies [31, 35]. We assumed  $10\text{kmh}^{-1}$  on tracks for motorbikes, tricycles and other types of improvised ambulances used to transport women in labour. Details of the travel speeds applied by landcover and type of road are included as Table in [S1 Table](#).

To avoid creating artificial bridges across water bodies, road segments that intersect water bodies but not fully crossing it due to digitising, conversion or other topological error were corrected using the “clean artefacts” option in AccessMod [29]. The clean artefact function removes only the artificial bridge and includes the other segments of the road in the model. The estimated travel times account for variations in walking and bicycling speed due to changing elevation when travelling towards a health facility. The corrections for walking speed due to changing elevation was implemented with the Tobler’s formula while bicycling speed was adjusted using a complex physical model based on velocity, power and resistance that are explained into details in the AccessMod user manual [29]. Finally, we extracted the average travel times within a kilometre distance of the woman’s residential town. Then, we calculated

the extra time travelled using the difference between travel time to the nearest health facility and the FTHG.

## Statistical analysis

All statistical analyses were performed with Statistical Package for the Social Sciences (SPSS) (IBM, NY, version 24), figures were generated using ggplot2 in R and maps were created using ArcGIS<sup>®</sup> software (version 10.4) by Esri [36]. Freely available to use state outline data from geoBoundaries [25], and OpenStreetMap [33] basemaps were used to draw the map figures. We produced two maps, one showing stillbirth or live births layered on travel times and the second showing flows of women towards FTGH.

Summary tables for maternal sociodemographic and geographic accessibility characteristics were generated, firstly for cases (APSB and IPSV) versus controls (live births) and then for cases alone. Categorical and continuous variables were summarised as proportions and means respectively. Cross-tabulations comparing cases versus controls and IPSB versus APSB were performed. Independent sample t-test was used to compare means between groups and chi-square/Fischer's exact test for association between groups, with statistical significance defined as alpha less than 0.05 (two-sided).

We fitted a conditional logistic regression model to predict the likelihood of stillbirths. The independent variables in the regression model were travelling time to the nearest health facility (at intervals of 5 mins), and FTHG (at intervals of 15 mins). The crude regression model was adjusted for known confounders, including the level of education, maternal occupation, parity, booking status, and mode of transport to the hospital on the day of delivery. The confounders were selected *a priori* based on the literature on predictors of stillbirths in sub-Saharan Africa. We report adjusted odds (AOR) ratios and 95% confidence interval (CI).

## Ethics

This study was reviewed and approved by the Research and Ethics Committee (REC) of the Federal Teaching Hospital Gombe (NHREC/25/10/2013). Informed consent was sought from all study participants before participation in this study.

## Results

### Characteristics of cases and controls

A total of 318 women, including 159 who had stillborn babies (cases) and 159 age-matched women who had live births (controls) were included, as shown in [Table 1](#). Their ages ranged from 15 to 50 years, with an average woman 28.6 (SD: 6.6) years old. There was no significant difference in age between the cases and controls ( $p = 0.217$ ). Women who experienced a stillbirth and those who had live births differed significantly with regard to their education, parity, booking status, referral status, mode of transport to the FTHG on day of delivery, occupation, and fathers' occupation ( $p < 0.001$  across all indicators). Compared to those who had live born babies, a higher proportion (44.6% vs 13.8%) of women who had experienced a stillbirth lacked formal education; had four or more children (48.1 vs 30.2%), and had been referred (73.0% vs 17.0%) to the FTHG from another facility. Conversely, a higher proportion (26.4% vs 8.1%) of women who had experienced a live birth were formally employed, had husbands who were formally employed (61% vs 30.6%) and had their pregnancies booked at the FTHG (67.9% vs 17.5%).

[Table 2](#) compares the characteristics of participants by APSB and IPSB. Although the women who had experienced an IPSB were relatively three years older APSB, the age

**Table 1. Summary characteristics of all women who had stillbirths and their age-matched control who delivered live babies at the Federal Teaching Hospital Gombe from 1st January to 31st December 2019.**

	All births			p value
	Stillbirths (159) n (%)	Live births (159) n (%)	Total (318)	
<b>Mean age (SD)</b>	28.5 (6.8)	28.6 (6.3)	28.6 (6.6)	0.217
<b>Mother's education</b>				
No formal education	72 (44.6)	22 (13.8)	94 (29.8)	
Primary education	22 (13.8)	9 (5.7)	31 (9.7)	
Secondary education	38 (23.8)	65 (40.9)	103 (32.3)	
Tertiary education	27 (16.9)	63 (39.6)	90 (28.2)	<0.001
<b>Mother's occupation</b>				
Unemployed	99 (62.5)	95 (59.7)	194 (61.1)	
Informal employment	47 (29.4)	22 (13.8)	69 (21.6)	
Formal employment	13 (8.1)	42 (26.4)	55 (17.2)	<0.001
<b>Father's occupation</b>				
Unemployed	1 (0.6)	0 (0.0)	1 (0.3)	
Informal employment	109 (68.8)	61 (38.4)	170 (53.6)	
Formal employment	49 (30.6)	98 (61.6)	147 (46.1)	<0.001
<b>Parity</b>				
Nulliparous	12 (7.5)	5 (3.1)	17 (5.3)	
1 to 3 children	71 (44.4)	106 (66.7)	177 (55.5)	
4 or more children	76 (48.1)	48 (30.2)	124 (39.2)	<0.001
<b>Booking status</b>				
Unbooked	35 (21.9)	22 (13.8)	57 (17.9)	
Booked elsewhere	96 (60.6)	29 (18.2)	125 (39.5)	
Booked in FTHG	28 (17.5)	108 (67.9)	136 (42.6)	<0.001
<b>Referral</b>				
No	43 (27.0)	132 (83.0)	175 (54.9)	
Yes	116 (73.0)	27 (17.0)	143 (45.1)	<0.001
<b>Facility referred from</b>				
Primary health centre	40 (35.0)	9 (33.3)	49 (34.7)	
Secondary health facility	56 (47.9)	12 (44.4)	68 (47.3)	
Tertiary health facility	8 (6.8)	2 (7.4)	10 (6.9)	
Private health facility	12 (10.3)	4 (14.8)	16 (11.1)	0.122
<b>Transport FTHG for delivery</b>				
Ambulance	6 (3.8)	2 (1.3)	8 (2.5)	
Commercial vehicle	97 (61.3)	64 (40.3)	161 (50.8)	
Motorcycle	8 (5.0)	2 (1.3)	10 (3.1)	
Personal vehicle	48 (30.0)	91 (57.2)	139 (43.6)	<0.001

**Note:** FTHG = Federal Teaching Hospital Gombe, SD = Standard Deviation.

<https://doi.org/10.1371/journal.pone.0245297.t001>

difference was not statistically significant ( $p = 0.134$ ). In contrast to the observed differences between women who had experienced a stillbirth or live birth in [Table 1](#), we did not observe any significant differences between women who had IPSB and those with APSB across all the maternal indicators.

**Table 2. Summary characteristics of all women who had stillbirths delivered at the Federal Teaching Hospital Gombe from 1st January to 31st December 2019 by type of stillbirth.**

	Stillbirths			
	Intrapartum stillbirth (96) n (%)	Antepartum stillbirth (63) n (%)	Total (159)	p value
<b>Mean age (SD)</b>	30.0 (7.0)	27.4 (6.0)	28.5 (6.8)	0.134
<b>Mother's education</b>				
No formal education	43 (45.8)	29 (46.0)	72 (45.6)	
Primary education	15 (14.6)	7 (11.1)	22 (13.8)	
Secondary education	22 (22.9)	16 (25.4)	38 (23.8)	
Tertiary education	16 (16.7)	11 (17.5)	27 (16.9)	0.344
<b>Mother's occupation</b>				
Unemployed	60 (63.5)	39 (61.9)	99 (62.5)	
Informal employment	29 (29.2)	18 (28.6)	47 (29.4)	
Formal employment	7 (7.3)	6 (9.5)	13 (8.1)	0.614
<b>Father's occupation</b>				
Unemployed	0 (0.0)	1 (1.6)	1 (0.6)	
Informal employment	66 (69.8)	43 (68.3)	109 (68.8)	
Formal employment	30 (30.2)	19 (30.2)	49 (30.6)	0.593
<b>Parity</b>				
Nulliparous	8 (8.3)	4 (6.3)	12 (7.5)	
1 to 3 children	39 (40.6)	32 (50.8)	71 (44.4)	
4 or more children	49 (51.0)	27 (42.9)	76 (48.1)	0.609
<b>Booking status</b>				
Unbooked	21 (21.9)	14 (22.2)	35 (21.9)	
Booked elsewhere	61 (63.5)	35 (55.6)	96 (60.6)	
Booked in FTHG	14 (14.6)	14 (22.2)	28 (17.5)	0.676
<b>Referral</b>				
No	23 (22.9)	20 (31.7)	43 (26.9)	
Yes	73 (77.1)	43 (68.3)	116 (73.1)	0.125
<b>Facility referred from</b>				
Primary health centre	25 (35.1)	15 (34.9)	40 (35.0)	
Secondary health facility	40 (54.1)	17 (39.5)	57 (48.7)	
Tertiary health facility	4 (5.4)	4 (9.3)	8 (6.8)	
Private health facility	4 (5.4)	7 (16.3)	11 (9.4)	0.357
<b>Transport FTHG for delivery</b>				
Ambulance	4 (4.2)	2 (3.3)	6 (3.8)	
Commercial vehicle	55 (57.3)	42 (66.7)	97 (61.3)	
Motorcycle	4 (4.2)	4 (6.3)	8 (5.0)	
Personal vehicle	33 (34.4)	15 (23.8)	48 (30.0)	0.324

**Note:** FTHG = Federal Teaching Hospital Gombe, SD = Standard Deviation.

<https://doi.org/10.1371/journal.pone.0245297.t002>

### Travel time and pregnancy outcomes

Travel times for cases and controls to the nearest health facility and FTHG are shown in [Table 3](#). Overall, we did not observe any significant difference in the mean travel time to the nearest government health facility for women who had experienced a stillbirth compared to those who had a live birth [9.3 mins (SD 7.3, 11.2) vs 6.9 mins (SD 5.1, 8.7) respectively,  $p = 0.077$ ]. When measured from their residential town to the FTHG, women who experienced a stillbirth had approximately twice (26.3 vs 14.5 mins) the mean travel time of women who



**Table 3. Travel time (in minutes) to the nearest health facility and to Federal Teaching Hospital Gombe from participants residential areas compared across stillbirths versus live births, and fresh versus macerated stillbirths among patient seen from 1st January to 31st December 2019.**

	All cases				Stillbirths			
	Stillbirths (159)	Live Births (159)	Total	p value	Intrapartum stillbirth	Antepartum stillbirth	Total	p value
Time to nearest facility (mins); mean (95%CI)	9.3 (7.3, 11.2)	6.9 (5.1, 8.7)	8.1 (6.8, 9.4)	0.077	9.6 (7.2, 12.1)	8.9 (5.4, 12.3)	9.3 (7.3, 11.2)	0.718
Time to FTHG (mins); mean (95%CI)	26.3 (20.6, 32.0)	14.5 (10.8, 18.3)	20.4 (16.9, 23.9)	0.001	27.6 (20.8, 34.4)	24.2 (13.8, 34.6)	26.3 (20.6, 32.0)	0.571
Extra time travelled to FTHG (mins); mean (95%CI)	17.0 (12.3, 21.4)	7.6 (5.2, 10.1)	12.3 (9.7, 14.9)	<0.001	17.9 (12.2, 23.7)	15.3 (8.0, 22.6)	17.0 (12.3, 21.4)	0.561

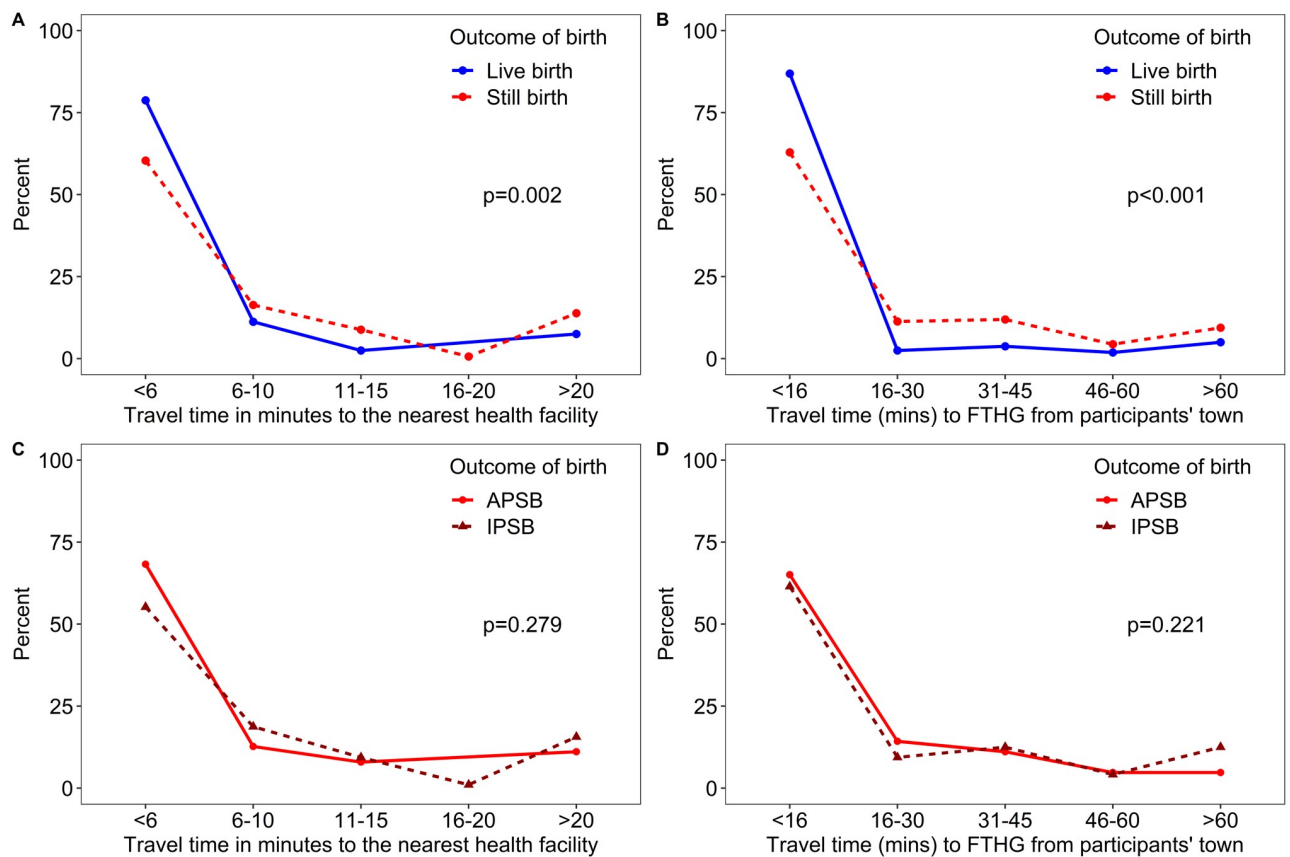
**Note:** FTHG = Federal Teaching Hospital Gombe

Extra time travelled = Travel time to FTHG minus travel time to the nearest facility from participant’s residential area

Reported p-values for comparing means are based on independent sample t-test and chi-square/Fischer’s exact test for association between groups.

<https://doi.org/10.1371/journal.pone.0245297.t003>

had a live birth (Table 3). Fig 2 shows the comparative travel time to health facilities by pregnancy outcome and type of stillbirth. The proportion of women in all categories decreased with increasing distance. More of the women who experienced a live birth lived within five minutes (82.4% vs 63.1%,  $p = 0.002$ ) travel time to their nearest government health facility



**Fig 2. Comparative distance decay for cases (stillbirths) versus controls (live births) and for women with intrapartum versus those with Antepartum stillbirth from 1st January to 31st December 2019 at the Federal Teaching Hospital Gombe.**

<https://doi.org/10.1371/journal.pone.0245297.g002>

compared to women who had experienced a stillbirth. Similarly, a significantly higher proportion (88.0% vs 62.5%,  $p < 0.001$ ) of women who delivered a live baby lived within 15 minutes travel time to the FTHG compared to those who were delivered of stillborn babies (Fig 2).

The difference in travel time between APSB and IPSB to the nearest health facility and FTHG were not statistically significant. Similarly, the difference in the extra time travelled from the nearest health facility to FTHG between APSB and IPSB was not significant. There was no association between distance groups to the nearest health facility and FTHG by stillbirth cases (Fig 2C and 2D). Meanwhile, the distance groups were associated with cases and controls.

After adjusting for known confounders (mother's age, education, occupation, parity, booking status, referral, and mode of transport to FTHG), there was no difference in the effect of varying travel times to the nearest health facility on the likelihood of experiencing a stillbirth (Table 4). Travel time from residential town to the FTHG differed significantly between the women who had experienced a stillbirth compared to those who had a live birth and predicted the likelihood of stillbirths (Fig 3). The patterns of travel from towns to the FTHG shows many of the stillbirth cases lived within Gombe City close to the hospital (Fig 4). There were 11 cases that travelled almost 30 km to reach FTHG. Also, the flow patterns show communities with a high number (at least five) of stillbirths from outside Gombe city.

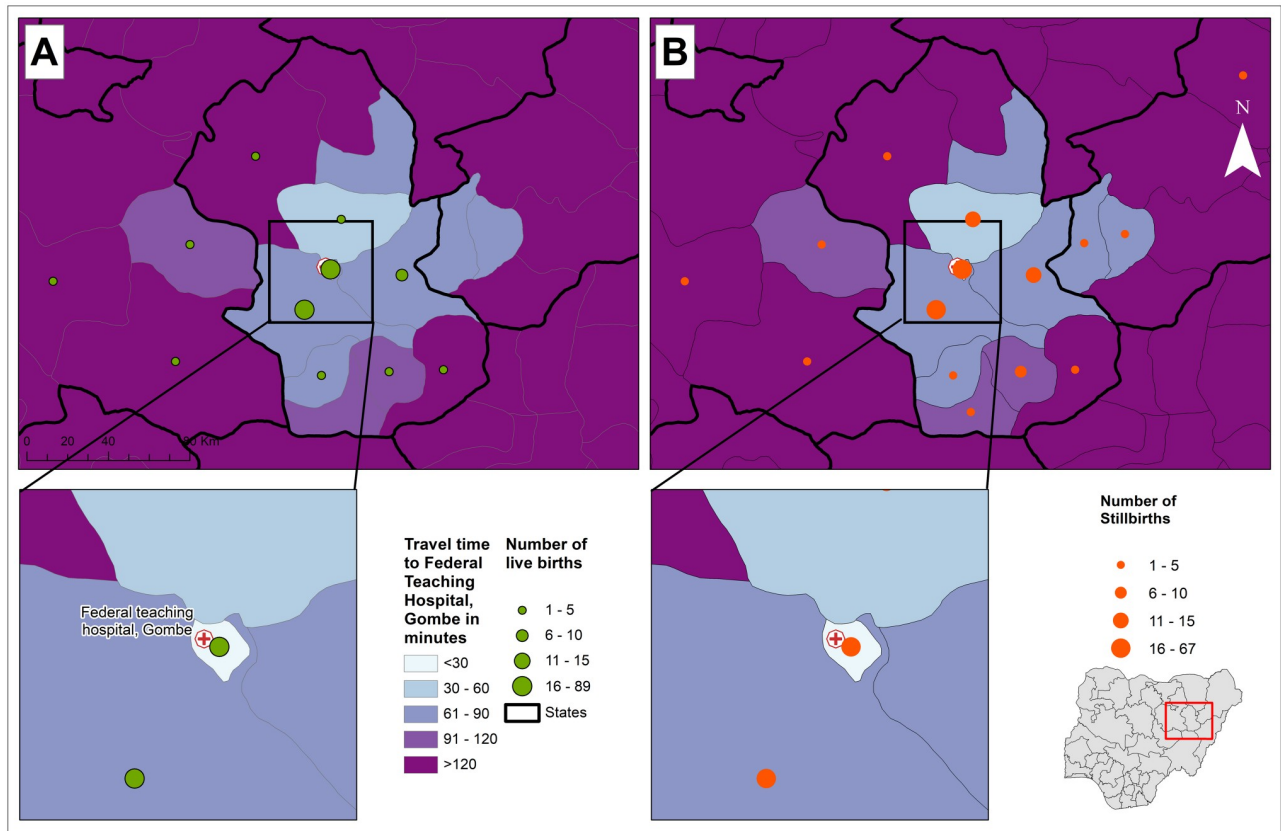
The odds of experiencing a stillbirth increased significantly with increasing travel time to FTHG. Women within 30 minutes travel were more than twice as likely to experience a stillbirth as those living within 15 minutes or less travel time, and this increased to almost nine times for women residing beyond one hour's travel time. After adjusting for known confounders, the key predictor of experiencing a stillbirth was a travel time to the FTHG of 60 minutes and above. Women who lived farther than 60 minutes had a 12 times likelihood of having a stillborn (OR = 12, 95% CI = 1.8–24.3,  $p = 0.011$ ) compared to those who lived within a 15 minutes travel time to the FTHG (Table 4).

**Table 4. Conditional logistic regression model table of the effect of travel time on stillbirths (compared to live births) among babies delivered at the Federal Teaching Hospital Gombe from 1st January to 31st December 2019.**

	Unadjusted			Adjusted*		
	Odds Ratios	95% CI	p value	Odds Ratios	95% CI	p value
<b>Time to nearest facility categories</b>						
5 mins and below	1	Reference	1	1	Reference	1
6–10 mins	2.4	1.1, 5.0	0.024	1.8	0.6, 5.5	0.277
11–15 mins	6.6	1.7, 21.6	0.006	5.1	0.9, 28.0	0.059
16–20 mins	1.3	0.08, 20.9	0.855	0.1	0.0, 5.2	0.275
21 mins and above	2.3	1.1, 5.0	0.024	0.7	0.3, 2.0	0.504
<b>Time to FTHG categories</b>						
15 mins and below	1	Reference	1	1	Reference	1
16–30 mins	2.6	1.1, 6.4	0.036	0.9	0.3, 3.4	0.947
31–45 mins	4.7	1.1, 23.9	0.049	0.5	0.1, 3.5	0.485
46–60 mins	4.4	1.7, 11.4	0.002	1.2	0.3, 4.2	0.822
60 mins and above	8.8	2.5, 30.6	0.001	12.2	1.8, 24.3	0.011

\* Adjusted for mother's education, occupation, parity, booking status, referral, and mode of transport to FTHG on the day of delivery.

<https://doi.org/10.1371/journal.pone.0245297.t004>



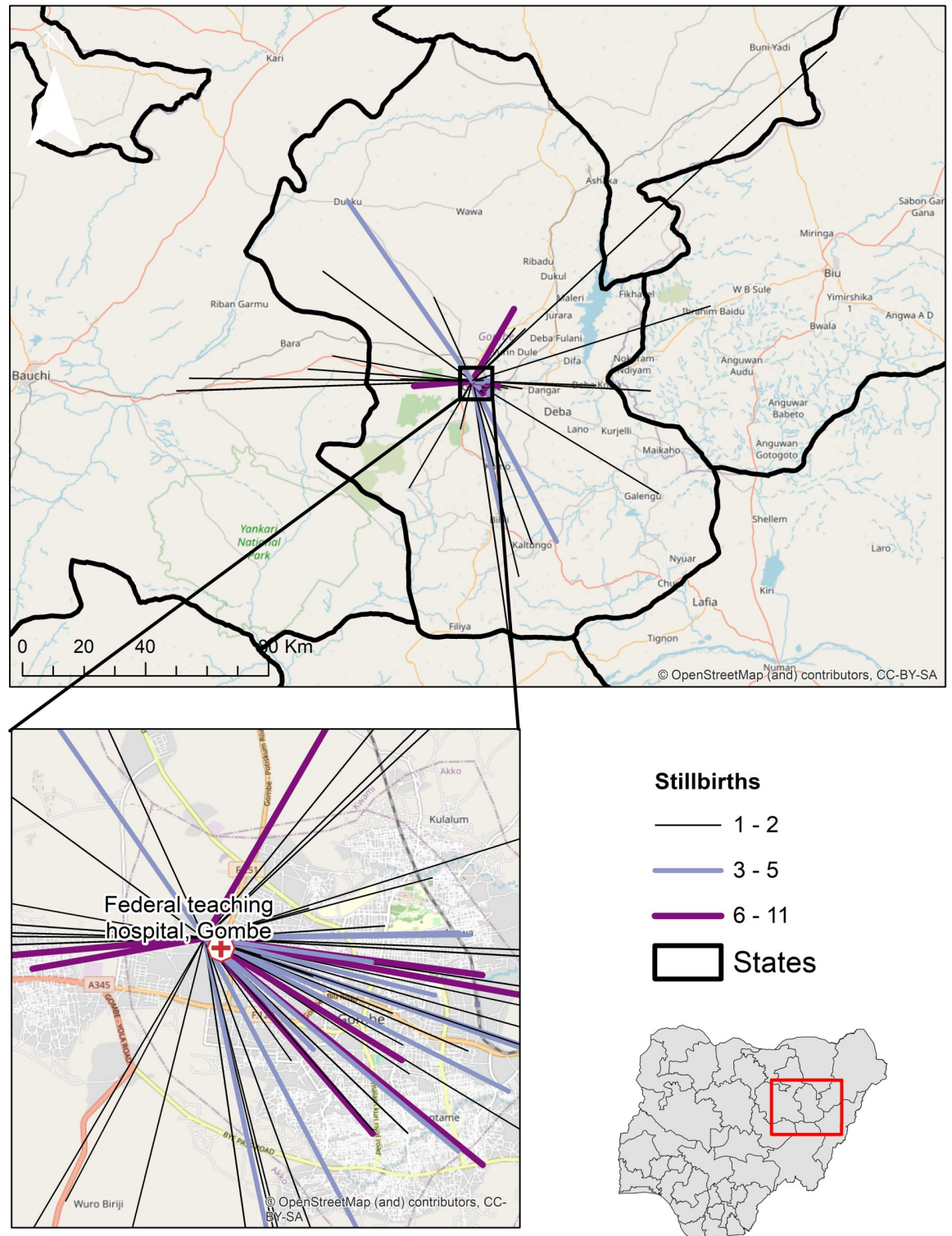
**Fig 3. Travel time from participants' residential area to Federal Teaching Hospital Gombe for; [A] women with Stillbirths and [B] age-matched controls who had Live births from 1st January to 31st December 2019.** Note: This map was produced by the authors with administrative boundaries data from geoBoundaries [25], and Base map and data from OpenStreetMap and OpenStreetMap Foundation [33].

<https://doi.org/10.1371/journal.pone.0245297.g003>

## Discussion

In this study, we explored the influence of travel time to the health facility on the occurrence of stillbirths in Gombe City, northeast Nigeria. We observed a strong association between travel time and pregnancy outcome among women who delivered at the main tertiary referral hospital, FTHG. Travel time to the FTHG among women who experienced stillbirths was twice that of women who experienced a live birth. After adjusting for known confounders, women who lived beyond one-hour travel time to FTHG had a 12-fold significantly higher likelihood of experiencing a stillbirth compared to women living within a quarter of an hour's travel time.

All the women in this study, irrespective of pregnancy outcome, could have received care within eight minutes travel because 90% of government primary and secondary health facilities in Gombe State provide basic obstetric care [24]. However, they travelled averagely 12 extra minutes to reach FTHG, with stillbirth cases travelling even longer than live births. Although FTHG is the major tertiary referral hospital in Gombe state, it is unlikely that all the women in the study were referred there. Hence, it would have been useful to ascertain reasons for the choice of delivery at FTHG among women who were not referred there and had a nearer health facility. The quality of maternal and newborn services offered in public-sector primary and secondary facilities in Nigeria is variable and mostly considered suboptimal due to the differences in resources dedicated to the health system by subnational governments [37]. The



**Fig 4. Travel flows from towns to the Federal Teaching Hospital Gombe.** The increasing width and colour of lines show the number of stillbirths from towns. *Note: This map was produced by the authors with administrative boundaries data from geoBoundaries [25], and Base map and data from OpenStreetMap and OpenStreetMap Foundation [33].*

<https://doi.org/10.1371/journal.pone.0245297.g004>

available resources and poorer quality could partly explain why many women in Gombe spent extra time travelling to seek care at the distant tertiary FTHG.

This study shows, for the first, that women who delivered stillbirths in Gombe State had a significantly higher travel time than those with live born newborns, similar to a previous study in the Netherlands [38]. Likewise, another study that pooled data from 21 low-and middle-income countries found that adverse perinatal outcomes were associated with significantly longer travel times/distances to healthcare facilities [39]. Clearly, understanding the influence of travel time on the delivery of stillbirths is complex, given its implicit associations with broader individual socioeconomic characteristics such as poverty, level of education, and obstetric characteristics such as parity and booking status [40, 41]. In emphasis, our study also revealed that women who had stillbirths were comparatively poorer, less educated, more likely to be multiparous and unbooked. Women without formal education in our setting are more likely to belong to the poorest socioeconomic group with consequent pre-pregnancy anaemia; have poor knowledge about the warning signs of stillbirth; be undernourished, and miss antenatal care appointments [26]. Continued exposure to adverse and overlapping socioeconomic determinants of health is known to limit the probability of women to surmount additional hindrances, such as geographic access to delivery services. Consequently, they are at greater risk of poorer health outcomes including stillbirths as previously shown in Gombe [42], Nepal [43], and Spain [44] where stillbirths increased significantly among poorer and less educated women.

The actual travel time to our facility may have been impacted by additional barriers such as ownership of personal vehicle and time spent during referrals between facilities. Our analysis showed that women with stillbirths were more likely to have been referred from other facilities and travelled to the FTHG on day of delivery with non-personal vehicle compared to those with live births, as has been reported in other studies [11, 13]. While we adjusted for referral status and mode of transportation to our facility, we were unable to capture the additional time the women spent in the referral facility, time spent travelling between facilities and time to arrange her transport. These additional times would have likely increased the travel time for women who had stillbirths since a significantly higher proportion of them were referred and travelled on non-personal vehicles compared to those who delivered live babies. We consider that these pre-hospital delays would be longer for women that reside more than an hour away from the FTHG and likely rural dwellers. Furthermore, women living closer (within a quarter of an hour) will reside predominantly in the urban metropolis of Gombe and have a higher likelihood of seeking delivery care directly at the FTHG, instead of elsewhere before being referred. These nuanced differences could have also contributed to the high likelihood of stillbirths for women residing farther away from the FTHG. Future studies could investigate the referral patterns to FTHG, the quality of EmONC services at lower-tier health facilities and their impact on pregnancy outcomes.

Overall, our findings on the influence of travel time on stillbirths, taken together with previous studies on stillbirths in Gombe [26, 41], adds a new perspective to understanding why stillbirths rates continue to be high in our setting. Our findings could inform plans for ensuring and centralising quality emergency obstetric and newborn services to bridge the inequality gap in access to and use of maternal health services. Besides, socioeconomic disadvantages which have contributed to stillbirths in Gombe State needs addressing. Furthermore, interventions should include training and re-training of the local health workforce; reorganisation of services provided by public primary and secondary facilities; and provision of functional government ambulance system which have improved the quality of EmONC elsewhere [43]. Tackling the constraints of geographic access for women with stillbirths identified from this study requires improvements in social infrastructure, which is outside the direct purview of the routine

healthcare system. Although challenging, especially in a resource-limited setting like the north-east of Nigeria where Gombe is located, all levels of government must make evidence-informed policy decision and show leadership at implementing interventions to remedy this situation. Ending preventable stillbirths is achievable only through an integrated approach that addresses the broader socioeconomic, and geographic factors and not just isolated vertical programmes which address clinical causes alone [45].

There are several advantages to the spatial methods used in this study. The journey origin and health facility used were clearly defined, and geographic coordinates were available to measure proximity compared with limitations in similar studies [46]. We avoided the assumption in DHS survey data analysis that women use the health facility closest to their residence [12], as there is evidence of large variations in expected (nearest health facility) and observed patterns of using birthing services in health facilities [47]. Our geospatial analysis also eliminated errors associated with self-reported distance and recall bias in other studies [37].

However, our study has several limitations to be considered in interpreting results. Firstly, we used the town of residence instead of the actual home address in modelling travel time. While generalising the address to town level for all women in a locality protects the confidentiality and privacy of the study participants, it may have led to acceptable aggregation error [48]. A second limitation is that we assumed a uniform speed and travel mode for all women, but there could be variations as not all women will use mechanised transport on roads. Lastly, our travel time modelling did not account for diurnal and seasonal variations in road traffic conditions due to flash flooding, religious festivals and other events which results in traffic congestion prevalent in urban settings.

## Conclusion

We have shown for the first time, the influence of travel time to a major tertiary referral health facility on the occurrence of stillbirths in an urban city in, northeast Nigeria. We did not observe any significant difference in the mean travel time to the nearest government health facility among study participants. However, women who experienced stillbirths had twice the mean travel time from their residence to the facility where they sought care compared to those with live births. There was a positive relationship between longer travel time ( $\geq 60$  minutes) and delivery of stillbirths. Our finding could guide interventions aimed at ensuring the availability of quality obstetric and newborn care to reduce the unacceptably high stillbirth rates in our setting.

## Supporting information

**S1 File. Pretested questionnaire (data collection tool).**

(DOCX)

**S2 File. Manuscript dataset.**

(XLSX)

**S1 Table. Landcover, road class and their corresponding speeds for modelling travel times.**

(DOCX)

## Acknowledgments

The authors wish to acknowledge the labour ward manager, Balkisu Mamman and staff of Obstetrics and Gynaecology Department of FTHG for providing care to the study participants.

## Author Contributions

**Conceptualization:** Oghenebrume Wariri, Egwu Onuwabuchi, Jacob Albin Korem Alhassan, Eseoghene Dase, Winfred Dotse-Gborgbortsi.

**Data curation:** Oghenebrume Wariri, Egwu Onuwabuchi, Eseoghene Dase, Christopher Hassan Laima, Halima Usman Farouk, Aliyu U. El-Nafaty.

**Formal analysis:** Oghenebrume Wariri, Jacob Albin Korem Alhassan, Winfred Dotse-Gborgbortsi.

**Methodology:** Oghenebrume Wariri, Egwu Onuwabuchi, Jacob Albin Korem Alhassan, Eseoghene Dase, Iliya Jalo, Aliyu U. El-Nafaty, Uduak Okomo, Winfred Dotse-Gborgbortsi.

**Project administration:** Oghenebrume Wariri, Egwu Onuwabuchi, Christopher Hassan Laima, Halima Usman Farouk.

**Resources:** Oghenebrume Wariri.

**Supervision:** Iliya Jalo, Aliyu U. El-Nafaty, Uduak Okomo, Winfred Dotse-Gborgbortsi.

**Visualization:** Winfred Dotse-Gborgbortsi.

**Writing – original draft:** Oghenebrume Wariri, Uduak Okomo.

**Writing – review & editing:** Oghenebrume Wariri, Egwu Onuwabuchi, Jacob Albin Korem Alhassan, Eseoghene Dase, Iliya Jalo, Christopher Hassan Laima, Halima Usman Farouk, Aliyu U. El-Nafaty, Uduak Okomo, Winfred Dotse-Gborgbortsi.

## References

1. Lawn JE, Blencowe H, Waiswa P, Amouzou A, Mathers C, Hogan D, et al. Stillbirths: Rates, risk factors, and acceleration towards 2030. *Lancet*. 2016; 387(10018):587–603. [https://doi.org/10.1016/S0140-6736\(15\)00837-5](https://doi.org/10.1016/S0140-6736(15)00837-5) PMID: 26794078
2. World Health Organization. Maternal newborn child and adolescent health, 2015 [Internet]. [cited 2020 Jun 25]. [https://www.who.int/maternal\\_child\\_adolescent/epidemiology/stillbirth/en/](https://www.who.int/maternal_child_adolescent/epidemiology/stillbirth/en/)
3. WHO U. Every Newborn: An Action Plan To End Preventable Deaths. 2014 [cited 2020 Jun 24]; <https://www.who.int/mediacentre/events/2014/wha67/en/>
4. Goldenberg RL, McClure EM, Bann CM. The relationship of intrapartum and antepartum stillbirth rates to measures of obstetric care in developed and developing countries. *Acta Obstet Gynecol Scand* [Internet]. 2007 Jan 1 [cited 2020 Jun 25]; 86(11):1303–9. Available from: <http://doi.wiley.com/10.1080/00016340701644876> PMID: 17963057
5. Afulani PA. Determinants of stillbirths in Ghana: Does quality of antenatal care matter? *BMC Pregnancy Childbirth* [Internet]. 2016 Jun 2 [cited 2020 Jun 25]; 16(1):1–17. Available from: <https://link.springer.com/articles/10.1186/s12884-016-0925-9> PMID: 27255155
6. Pattinson R, Kerber K, Buchmann E, Friberg IK, Belizan M, Lansky S, et al. Stillbirths: How can health systems deliver for mothers and babies? Vol. 377, *The Lancet*. Lancet Publishing Group; 2011. p. 1610–23.
7. Lawn J, Shibuya K, Stein C. No cry at birth: Global estimates of intrapartum stillbirths and intrapartum-related neonatal deaths. *Bull World Health Organ* [Internet]. 2005 [cited 2020 Jun 25]; 83(6):409–17. PMID: 15976891
8. Ayele GS, Melku AT, Belda SS. Utilization of skilled birth attendant at birth and associated factors among women who gave birth in the last 24 months preceding the survey in Gura Dhamole Woreda, Bale zone, southeast Ethiopia. *BMC Public Health* [Internet]. 2019 Nov 11 [cited 2020 Jun 27]; 19(1):1501. Available from: <https://bmcpublihealth.biomedcentral.com/articles/10.1186/s12889-019-7818-6> PMID: 31711460
9. Geleto A, Chojenta C, Musa A, Loxton D. Barriers to access and utilization of emergency obstetric care at health facilities in sub-Saharan Africa: A systematic review of literature 11 *Medical and Health Sciences 1117 Public Health and Health Services* [Internet]. Vol. 7, *Systematic Reviews*. BioMed Central Ltd.; 2018 [cited 2020 Jun 27]. /pmc/articles/PMC6234634/?report=abstract

10. Alhassan JAK, Wariri O, Onuwabuchi E, Mark G, Kwarshak Y, Dase E. Access to skilled attendant at birth and the coverage of the third dose of diphtheria-tetanus-pertussis vaccine across 14 West African countries—An equity analysis. *Int J Equity Health* [Internet]. 2020 Jun 1 [cited 2020 Jul 26]; 19(1):78. Available from: <https://equityhealth.biomedcentral.com/articles/10.1186/s12939-020-01204-5> PMID: 32487158
11. Thaddeus S, Maine D. Too far to walk: Maternal mortality in context. *Soc Sci Med* [Internet]. 1994 [cited 2020 Jun 27]; 38(8):1091–110. Available from: <https://pubmed.ncbi.nlm.nih.gov/8042057/> PMID: 8042057
12. Lohela TJ, Campbell OMR, Gabrysch S. Distance to Care, Facility Delivery and Early Neonatal Mortality in Malawi and Zambia. Schooling CM, editor. *PLoS One* [Internet]. 2012 Dec 27 [cited 2020 Jun 27]; 7(12):e52110. Available from: <https://dx.plos.org/10.1371/journal.pone.0052110> PMID: 23300599
13. Gabrysch S, Campbell OMR. Still too far to walk: Literature review of the determinants of delivery service use. *BMC Pregnancy Childbirth* [Internet]. 2009 Aug 11 [cited 2020 Jun 27]; 9(1):34. Available from: <https://link.springer.com/articles/10.1186/1471-2393-9-34> PMID: 19671156
14. Barnes-Josiah D, Myntti C, Augustin A. The “Three Delays” as a framework for examining maternal mortality in Haiti. *Soc Sci Med*. 1998 Apr 15; 46(8):981–93. [https://doi.org/10.1016/s0277-9536\(97\)10018-1](https://doi.org/10.1016/s0277-9536(97)10018-1) PMID: 9579750
15. Titaley CR, Dibley MJ, Agho K, Roberts CL, Hall J. Determinants of neonatal mortality in Indonesia. *BMC Public Health* [Internet]. 2008 Jul 9 [cited 2020 Jun 27]; 8(1):1–15. Available from: <https://link.springer.com/articles/10.1186/1471-2458-8-232> PMID: 18613953
16. Njoku C., Emechebe C., Eyong E., Ukaga J., Anachuna K. Prevalence and risk factors for stillbirths in a tertiary hospital in Niger Delta area of Nigeria: a ten year review. *Int J Med Biomed Res*. 2016 Oct 3; 5(3):106–13.
17. Okeudo C, Ezem B, Ojiyi E. Stillbirth rate in a teaching hospital in South-eastern Nigeria: A silent tragedy. *Ann Med Health Sci Res*. 2012; 2(2):176. <https://doi.org/10.4103/2141-9248.105667> PMID: 23439739
18. Okonofua FE, Ntoimo LFC, Ogu R, Galadanci H, Mohammed G, Adetoye D, et al. Prevalence and determinants of stillbirth in Nigerian referral hospitals: A multicentre study. *BMC Pregnancy Childbirth* [Internet]. 2019 Dec 30 [cited 2020 Jun 27]; 19(1):533. Available from: <https://bmcpregnancychildbirth.biomedcentral.com/articles/10.1186/s12884-019-2682-z> PMID: 31888536
19. Mutihir J, Eka P. Stillbirths at the Jos University Teaching Hospital: Incidence, risk, and etiological factors. *Niger J Clin Pract* [Internet]. 2011 Jan [cited 2020 Jun 27]; 14(1):14. Available from: <http://www.njcponline.com/text.asp?2011/14/1/14/79233> PMID: 21493985
20. Nesbitt RC, Lohela TJ, Soremekun S, Vesel L, Manu A, Okyere E, et al. The influence of distance and quality of care on place of delivery in rural Ghana. *Sci Rep* [Internet]. 2016 Oct 8 [cited 2020 Jul 7]; 6(1):1–8. Available from: [www.nature.com/scientificreports](http://www.nature.com/scientificreports) PMID: 28442746
21. Dotse-Gborgbortsi W, Tatem AJ, Alegana V, Utazi CE, Ruktanonchai CW, Wright J. Spatial inequalities in skilled attendance at birth in Ghana: a multilevel analysis integrating health facility databases with household survey data. *Trop Med Int Heal* [Internet]. 2020 Jul 18 [cited 2020 Aug 29]; tmi.13460. Available from: <https://onlinelibrary.wiley.com/doi/abs/10.1111/tmi.13460> PMID: 32632981
22. Gombe State. Jewel In The Savannah [Internet]. [cited 2020 May 23]. <https://gombestate.gov.ng/>
23. World Population Review. Gombe Population 2020 (Demographics, Maps, Graphs) [Internet]. [cited 2020 May 23]. <https://worldpopulationreview.com/world-cities/gombe-population/>
24. Bhattacharya AA, Umar N, Audu A, Allen E, Schellenberg JRM, Marchant T. Quality of routine facility data for monitoring priority maternal and newborn indicators in DHIS2: A case study from Gombe State, Nigeria. *PLoS One* [Internet]. 2019 Jan 1 [cited 2020 Jul 11]; 14(1). Available from: [/pmc/articles/PMC6347394/?report=abstract https://doi.org/10.1371/journal.pone.0211265](https://doi.org/10.1371/journal.pone.0211265) PMID: 30682130
25. Runfola D, Anderson A, Baier H, Crittenden M, Dowker E, Fuhrig S, et al. geoBoundaries: A global database of political administrative boundaries. Tang W, editor. *PLoS One* [Internet]. 2020 Apr 24 [cited 2020 Nov 24]; 15(4):e0231866. Available from: <https://dx.plos.org/10.1371/journal.pone.0231866> PMID: 32330167
26. Dase E, Wariri O, Onuwabuchi E, Alhassan JAK, Jalo I, Muhajarine N, et al. Applying the WHO ICD-PM classification system to stillbirths in a major referral Centre in Northeast Nigeria: a retrospective analysis from 2010–2018. *BMC Pregnancy Childbirth* [Internet]. 2020 Dec 1 [cited 2020 Jul 7]; 20(1):383. Available from: <https://bmcpregnancychildbirth.biomedcentral.com/articles/10.1186/s12884-020-03059-8> PMID: 32611330
27. Lane Susan H; Kohlenberg Eileen. Emancipated minors: health policy and implications for nursing. *J Pediatr Nurs*. 2012; 27(5):533–48. <https://doi.org/10.1016/j.pedn.2011.07.014> PMID: 22920664
28. Maina J, Ouma PO, Macharia PM, Alegana VA, Mitto B, Fall IS, et al. A spatial database of health facilities managed by the public health sector in sub Saharan Africa. *Sci data* [Internet]. 2019 Jul 25 [cited



- 2020 Jun 29]; 6(1):134. Available from: <https://www.nature.com/articles/s41597-019-0142-2> PMID: 31346183
29. Ray N, Ebener S. AccessMod 3.0: Computing geographic coverage and accessibility to health care services using anisotropic movement of patients. *Int J Health Geogr* [Internet]. 2008 Dec 16 [cited 2020 Jun 29]; 7(1):63. Available from: <http://ij-healthgeographics.biomedcentral.com/articles/10.1186/1476-072X-7-63>
  30. McLafferty SL. GIS and Health Care. *Annu Rev Public Health* [Internet]. 2003 Jan 28 [cited 2020 Nov 12]; 24(1):25–42. Available from: <http://www.annualreviews.org/doi/10.1146/annurev.publhealth.24.012902.141012> PMID: 12668754
  31. Alegana VA, Wright JA, Pentrina U, Noor AM, Snow RW, Atkinson PM. Spatial modelling of healthcare utilisation for treatment of fever in Namibia. *Int J Health Geogr* [Internet]. 2012 Feb 15 [cited 2020 Jun 29]; 11(1):6. Available from: <http://ij-healthgeographics.biomedcentral.com/articles/10.1186/1476-072X-11-6> PMID: 22336441
  32. Cotillon SE. West Africa land use and land cover time series [Internet]. [cited 2020 Jun 29]. <https://pubs.er.usgs.gov/publication/fs20173004>
  33. OpenStreetMap Contributors. OpenStreetMap [Internet]. [cited 2020 Jun 29]. <https://www.openstreetmap.org/#map=14/10.2251/11.1767&layers=G>
  34. Jarvis A, Reuter HI, Nelson A, Guevara E. Hole-filled seamless SRTM data V4, International Centre for Tropical Agriculture (CIAT) [Internet]. 2008 [cited 2020 Jun 29]. <http://srtm.csi.cgiar.org/>
  35. Gething PW, Johnson FA, Frempong-Ainguah F, Nyarko P, Baschieri A, Aboagye P, et al. Geographical access to care at birth in Ghana: A barrier to safe motherhood. *BMC Public Health* [Internet]. 2012 Dec 16 [cited 2020 Jun 29]; 12(1):991. Available from: <https://bmcpublichealth.biomedcentral.com/articles/10.1186/1471-2458-12-991> PMID: 23158554
  36. ESRI 2011. GIS Mapping Software, Location Intelligence & Spatial Analytics | Esri [Internet]. [cited 2020 Aug 30]. <https://www.esri.com/en-us/home>
  37. Federal Ministry of Health (FMoH). National Health Facility Survey 2017 [Internet]. 2017 [cited 2020 Jul 11]. [http://somlforr.org.ng/wp-content/uploads/2017/05/NHFS-Final-Report-for-Printing\\_VI.pdf](http://somlforr.org.ng/wp-content/uploads/2017/05/NHFS-Final-Report-for-Printing_VI.pdf)
  38. Ravelli A, Jager K, de Groot M, Erwich J, Rijninks-van Driel G, Tromp M, et al. Travel time from home to hospital and adverse perinatal outcomes in women at term in the Netherlands. *BJOG An Int J Obstet Gynaecol* [Internet]. 2011 Mar 1 [cited 2020 Jul 11]; 118(4):457–65. Available from: <http://doi.wiley.com/10.1111/j.1471-0528.2010.02816.x> PMID: 21138515
  39. Karra M, Fink G, Canning D. Facility distance and child mortality: A multi-country study of health facility access, service utilization, and child health outcomes. *Int J Epidemiol* [Internet]. 2017 Jun 1 [cited 2020 Nov 12]; 46(3):817–26. Available from: <https://pubmed.ncbi.nlm.nih.gov/27185809/> PMID: 27185809
  40. Yahya MB, Pumpaibool T. Factors influencing the decision to choose a birth center by pregnant women in Gombe state Nigeria: Baseline survey. *J Heal Res*. 2019 May 13; 33(3):228–37.
  41. Alkali Y, Jalo I, El-Nafaty A, Bode-Thomas F. Causes of stillbirth in a community survey in Gombe State. *Niger J Paediatr* [Internet]. 2014 Feb 18 [cited 2020 Jul 11]; 41(2):125. Available from: <http://dx.doi.org/10.4314/njp.v41i2.9>
  42. Marmot M. Social determinants of health inequalities. *Lancet*. 2005 Mar 19; 365(9464):1099–104. [https://doi.org/10.1016/S0140-6736\(05\)71146-6](https://doi.org/10.1016/S0140-6736(05)71146-6) PMID: 15781105
  43. Ghimire PR, Agho KE, Renzaho A, Christou A, Nisha MK, Dibley M, et al. Socio-economic predictors of stillbirths in Nepal (2001–2011). Dangal G, editor. *PLoS One* [Internet]. 2017 Jul 13 [cited 2020 Nov 12]; 12(7):e0181332. Available from: <https://dx.plos.org/10.1371/journal.pone.0181332> PMID: 28704548
  44. Luque-Fernández MÁ, Lone NI, Gutiérrez-Garitano I, Bueno-Cavanillas A. Stillbirth risk by maternal socio-economic status and country of origin: A population-based observational study in Spain 2007–08. *Eur J Public Health* [Internet]. 2012 Aug [cited 2020 Nov 12]; 22(4):524–9. Available from: <https://pubmed.ncbi.nlm.nih.gov/21690181/> PMID: 21690181
  45. De Bernis L, Kinney M V., Stones W, Ten Hoop-Bender P, Vivio D, Leisher SH, et al. Stillbirths: Ending preventable deaths by 2030 [Internet]. Vol. 387, *The Lancet*. Lancet Publishing Group; 2016 [cited 2020 Jul 11]. p. 703–16. <http://dx.doi.org/10.1016/>
  46. Wong KLM, Benova L, Campbell OMR. A look back on how far to walk: Systematic review and meta-analysis of physical access to skilled care for childbirth in Sub-Saharan Africa. Dangal G, editor. *PLoS One* [Internet]. 2017 Sep 14 [cited 2020 Jul 20]; 12(9):e0184432. Available from: <https://dx.plos.org/10.1371/journal.pone.0184432> PMID: 28910302
  47. Dotse-Gborgbortsi W, Dwomoh D, Alegana V, Hill A, Tatem AJ, Wright J. The influence of distance and quality on utilisation of birthing services at health facilities in Eastern Region, Ghana. *BMJ Glob Heal* [Internet]. 2020 Jul 1 [cited 2020 Aug 30]; 4(002020):2020. Available from: <http://gh.bmj.com/> PMID: 32154031

48. Nesbitt RC, Gabrysch S, Laub A, Soremekun S, Manu A, Kirkwood BR, et al. Methods to measure potential spatial access to delivery care in low- and middle-income countries: A case study in rural Ghana. *Int J Health Geogr* [Internet]. 2014 Jun 26 [cited 2020 Jul 20]; 13(1):25. Available from: <http://ij-healthgeographics.biomedcentral.com/articles/10.1186/1476-072X-13-25> PMID: 24964931