



Scientific basis for standardization of fetal head measurements by ultrasound: a reproducibility study

R. NAPOLITANO*, V. DONADONO*, E. O. OHUMA*†‡, C. L. KNIGHT*, S. Z. WANYONYI*, B. KEMP*, T. NORRIS* and A. T. PAPAGEORGHIOU*†

*Nuffield Department of Obstetrics & Gynaecology, University of Oxford, Oxford, UK; †Oxford Maternal & Perinatal Health Institute, Green Templeton College, University of Oxford, Oxford, UK; ‡Centre for Statistics in Medicine, Botnar Research Centre, University of Oxford, Oxford, UK

KEYWORDS: biparietal diameter; fetal head biometry; head circumference; occipitofrontal diameter; reproducibility; transthalamic and transventricular plane; ultrasound; variability

ABSTRACT

Objective To compare the standard methods for ultrasound measurement of fetal head circumference (HC) and biparietal diameter (BPD) (outer-to-outer (BPD_{oo}) vs outer-to-inner (BPD_{oi}) caliper placement), and compare acquisition of these measurements in transthalamic (TT) vs transventricular (TV) planes.

Methods This study utilized ultrasound images acquired from women participating in the Oxford arm of the INTERGROWTH-21st Project. In the first phase of the study, BPD_{oo} and BPD_{oi} were measured on stored images. In the second phase, real-time measurements of BPD, occipitofrontal diameter (OFD) and HC in TT and TV planes were obtained by pairs of sonographers. Reproducibility of measurements made by the same (intraobserver) and by different (interobserver) sonographers, as well as the reproducibility of caliper placement and measurements obtained in different planes, was assessed using Bland–Altman plots.

Results In Phase I, we analyzed ultrasound images of 108 singleton fetuses. The mean intraobserver and interobserver differences were <2% (1.34 mm) and the 95% limits of agreement were <5% (3 mm) for both BPD_{oo} and BPD_{oi}. Neither method for measuring BPD showed consistently better reproducibility. In Phase II, we analyzed ultrasound images of 100 different singleton fetuses. The mean intraobserver and interobserver differences were <1% (2.26 mm) and the 95% limits of agreement were <8% (14.45 mm) for all fetal head measurements obtained in TV and TT planes. Neither plane for measuring fetal head showed consistently better reproducibility. Measurement of HC using the ellipse facility was as reproducible as HC calculated from BPD

and OFD. OFD by itself was the least reproducible of all fetal head measurements.

Conclusions Measurements of BPD_{oi} and BPD_{oo} are equally reproducible; however, we believe BPD_{oo} should be used in clinical practice as it allows fetal HC to be measured and compared with neonatal HC. For all head measurements, TV and TT planes provide equally reproducible values at any gestational age, and HC values are similar in both planes. Fetal head measurement in the TT plane is preferable as international standards in this plane are available; however, measurements in the TV plane can be plotted on the same standards. © 2016 The Authors. *Ultrasound in Obstetrics & Gynecology* published by John Wiley & Sons Ltd on behalf of the International Society of Ultrasound in Obstetrics and Gynecology.

INTRODUCTION

Fetal head biometry is important for estimation of gestational age in the second trimester and for monitoring fetal growth. Unfortunately, even after decades of clinical practice, guidelines still vary as to how the measurements should be taken, i.e. whether the biparietal diameter (BPD) should be measured by outer-to-outer (BPD_{oo}) or outer-to-inner (BPD_{oi}) caliper placement^{1,2}. It is also uncertain whether head circumference (HC) should be calculated from the occipitofrontal diameter (OFD) and BPD (HC_{calculated}) or by using the ellipse facility (HC_{ellipse}) on the ultrasound machine, and which is the better plane to use, i.e. transthalamic (TT) or transventricular (TV)^{1,3}. These issues are important clinically because measurement inconsistencies may affect the management

Correspondence to: Dr A. T. Papageorghiou, Nuffield Department of Obstetrics & Gynaecology, John Radcliffe Hospital, Oxford, OX3 9DU, UK (e-mail: aris.papageorghiou@obs-gyn.ox.ac.uk)

The copyright line for this article was changed on 14 July 2016 after original online publication.

Accepted: 29 April 2016

of individual pregnancies, make it difficult to compare data across units and contribute to the heterogeneity of studies describing fetal size^{4,5}.

In this study, we aimed to compare (i) the standard methods for measuring fetal HC (HC_{ellipse} vs $HC_{\text{calculated}}$) and BPD (BPD_{Doo} vs BPD_{Doi} caliper placement) on ultrasound and (ii) the effect of acquiring head measurements in TT vs TV planes, so as to make recommendations regarding best practice.

SUBJECTS AND METHODS

This study involved women at low risk of adverse pregnancy outcome who were recruited into the Oxford arm of the INTERGROWTH-21st Project (www.intergrowth21.org.uk), a multicenter, multiethnic, population-based project, conducted between 2008 and 2014 across eight countries⁶. The Fetal Growth Longitudinal Study (FGLS) is one of the three main components of the INTERGROWTH-21st Project, which aimed to construct international standards for fetal growth. All women included in our study were part of the FGLS. In the FGLS, serial two-dimensional ultrasound scans were performed every 5 ± 1 weeks, from $14 + 0$ to $41 + 6$ weeks' gestation, and images were stored for later analysis. Inclusion criteria for the FGLS were pregnant women with a known, certain last menstrual period, who had regular menstrual cycles and were not taking hormonal contraceptives or breastfeeding in the 2 months before they conceived naturally. Gestational age was calculated using the last menstrual period, with ultrasound confirmation based on a crown–rump length measurement at $9 + 0$ to $13 + 6$ weeks' gestation that was in agreement by ≤ 7 days^{7,8}.

All ultrasound scans in the FGLS were performed by sonographers who were trained, standardized and regularly audited^{2,8,9}. At each examination, BPD_{Doo} , OFD and HC_{ellipse} were acquired in triplicate in the TT plane. The same commercially available ultrasound machine (Philips HD-9, Philips Ultrasound, Bothell, WA, USA) with curvilinear abdominal transducers (C5-2, C6-3 and V7-3) was used at all study sites. For the purposes of the INTERGROWTH-21st Project, the manufacturer reprogrammed the machine's software to ensure that measurement values did not appear on the screen, so as to reduce operator 'expected value' bias². The INTERGROWTH-21st Project was approved by the Oxfordshire Research Ethics Committee 'C' (reference: 08/H0606/139) and all participants gave written informed consent.

Phase I: evaluation of biparietal diameter caliper placement

Using the stored ultrasound images acquired in the FGLS, two sonographers twice measured the BPD using two methods (BPD_{Doo} (Figure 1a) and BPD_{Doi} (Figure 1b)) on the first of the three images, after the original caliper placements had been removed from the image. The

sonographers were blinded to their own and each other's measurements. The intraobserver reproducibility for both methods was calculated for the two sonographers. To calculate the interobserver reproducibility, the first measurements of Sonographer A were compared with those of Sonographer B, and then repeated for the second measurements.

Phase II: evaluation of transthalamic and transventricular planes

From a cohort of participants that was different from that in Phase I, two sonographers obtained real-time measurements of BPD_{Doo} , OFD and HC_{ellipse} in the TV (Figure 1a) and TT (Figure 1b) planes in duplicate, providing an additional set of images to those in the FGLS. As no difference was found between BPD_{Doo} and BPD_{Doi} in Phase I, only BPD_{Doo} was measured to reduce scanning time. All measurements were obtained in a blinded fashion and were stored on the ultrasound machine and retrieved after completion of the study.

Each sonographer placed the calipers once on each of the four images acquired per participant (i.e. a total of 12 measurements per sonographer for BPD_{Doo} , OFD and HC_{ellipse}). Sonographer B repeated the caliper placements on the images acquired by Sonographer A, resulting in a total of 36 measurements. HC was also calculated from BPD and OFD ($HC_{\text{calculated}}$) for each image.

Measurement and plane definitions

BPD_{Doo} was measured with the intersection of the calipers placed from the outer edge of the proximal calvarial wall to the outer edge of the distal calvarial wall, at the widest part of the skull (Figure 1a). BPD_{Doi} was measured with the intersection of the calipers placed from the outer edge of the proximal calvarial wall to the inner edge of the distal calvarial wall (Figure 1b)¹⁰. OFD was measured with the intersection of the calipers placed from the outer edge of the anterior frontal wall to the outer edge of the distal occipital wall, at the longest part of the skull (Figure 1b). HC_{ellipse} was measured using the ellipse facility, placing the line of the ellipse on the outer border of the skull (Figure 1b)². The TT plane was acquired according to the following conditions: axial view at the level of the thalami with an angle of insonation as close as possible to 90° ; the head had to be oval in shape, symmetrical, centrally positioned and filling at least 30% of the monitor; the midline echo (representing the falx cerebri) had to be broken anteriorly, at a third of its length, by the cavum septi pellucidi; and the thalami had to be located symmetrically on either side of the midline (Figure 1b)². The TV plane was acquired including all the standard parameters to obtain a TT plane but visualizing the lateral ventricles rather than the thalami at a more cranial level, with the ventricles located symmetrically on each side of the midline, the anterior and posterior horns both visible, and the posterior ventricle cavity visualized as a hypochoic structure (Figure 1a)¹.

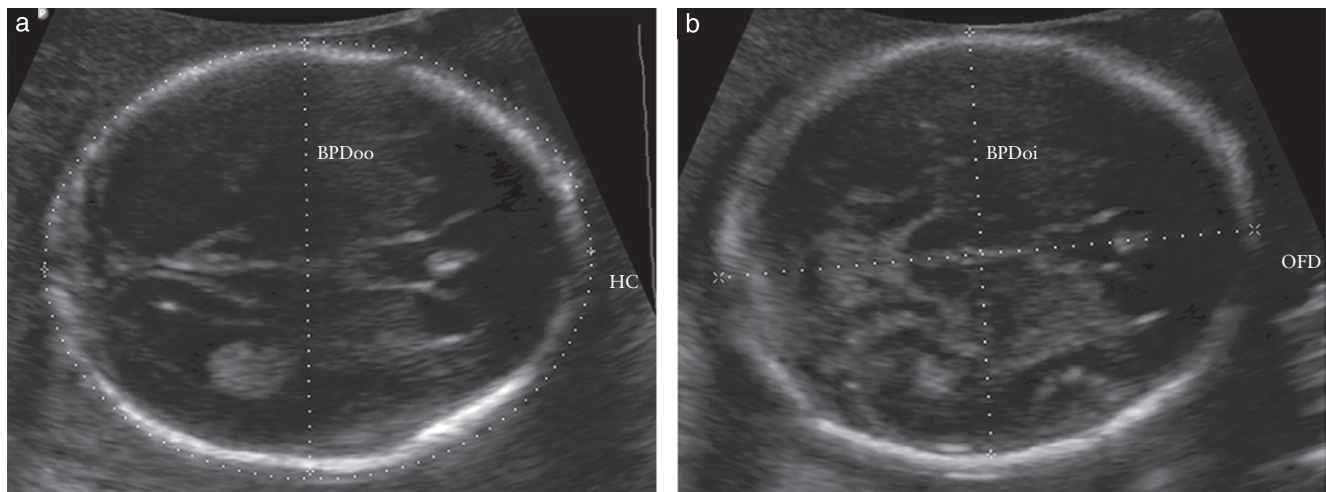


Figure 1 (a) Ultrasound image of biparietal diameter, measured using outer-to-outer caliper placement (BPDoo), and fetal head circumference (HC), measured using the ellipse facility, in the transventricular plane. (b) Ultrasound image of biparietal diameter, measured using outer-to-inner caliper placement (BPDoi), and occipitofrontal diameter (OFD) in the transthalamic plane.

Statistical analysis

In Phase I, the following analyses were performed: (i) intraobserver reproducibility of caliper placement for measurement of BPD using the BPDoo and BPDoi method, calculated for Sonographers A and B; and (ii) interobserver reproducibility of caliper placement for measurements of BPD using the BPDoo and BPDoi method, comparing the first measurements of Sonographer A with those of Sonographer B, and the second measurements of Sonographer A with those first obtained by Sonographer B.

In Phase II, the following analyses were performed: (i) intraobserver reproducibility of plane acquisition and caliper placement for TT and TV planes, comparing each sonographer's first and second measurements in the same plane; (ii) interobserver reproducibility of plane acquisition and caliper placement for TT and TV planes, comparing measurements of Sonographers A and B in the same plane; (iii) caliper replacement reproducibility, based on Sonographer B replacing the calipers on the images acquired by Sonographer A in the TT and TV planes (interobserver reproducibility); (iv) intraobserver reproducibility of plane acquisition and caliper placement between TT and TV planes, comparing the measurements of Sonographer A acquired in the TT plane with those acquired by Sonographer A in the TV plane (the same was then calculated for Sonographer B); and (v) interobserver reproducibility for plane acquisition and caliper placement between TT and TV planes, comparing the measurements of Sonographer A acquired in the TT plane with those acquired by Sonographer B in the TV plane, and then the measurements of Sonographer B acquired in the TT plane with those acquired by Sonographer A in the TV plane.

Intraobserver and interobserver variability were expressed as a percentage to account for increasing fetal head size with gestational age. Percentages were calculated as the difference between two measurements divided by the average of the two measurements, multiplied by 100.

Reproducibility was assessed using Bland–Altman plots. All plots and analyses were performed using STATA 11 (StataCorp, College Station, TX, USA).

Paired or unpaired *t*-tests, as appropriate, were performed to assess mean differences between measurements obtained by the same sonographer (intraobserver reproducibility) and different sonographers (interobserver reproducibility), and those obtained in two different planes (between-plane reproducibility). A *P*-value of < 0.05 was considered statistically significant.

RESULTS

Four women were included in the study at each gestational week, from 15 to 41 weeks in Phase I (108 women) and from 16 to 40 weeks in Phase II (100 women), resulting in a total of 4464 measurements. The demographic characteristics of the 208 participants are shown in Table 1.

Phase I: evaluation of biparietal diameter caliper placement

A total of 864 measurements were obtained in Phase I. Intraobserver and interobserver reproducibility was very good overall. The mean differences were $< 2\%$ (1.34 mm) and the 95% limits of agreement were $< 5\%$ (3 mm) for both BPDoo and BPDoi (Table 2 and Figures S1 and S2); however, neither method showed consistently better reproducibility. As expected, the 95% limits of agreement for interobserver reproducibility of BPDoo and BPDoi (3.1–4.2%) were slightly wider than for the intraobserver reproducibility (1.3–2.1%).

Phase II: evaluation of transthalamic vs transventricular plane

A total of 3600 measurements (1200 for BPD, OFD and HC_{ellipse}) were obtained in Phase II. HC_{ellipse} was

Table 1 Demographic characteristics of women with singleton pregnancy recruited into the Fetal Growth Longitudinal Study of the INTERGROWTH-21st Project who had retrospective measurement of biparietal diameter (BPD) (Phase I) or real-time measurements of fetal biometry in transthalamic (TT) and transventricular (TV) planes (Phase II)

Characteristic	Phase I: BPD study (n = 108)	Phase II: TT/TV study (n = 100)
Maternal age (years)	30 ± 4	30 ± 5
BMI (kg/m ²)	23.3 ± 2.7	26.9 ± 3.9
Nulliparous	66 (61)	42 (42)
GA at scan (weeks)	28.1 ± 7.7	28.0 ± 7.2

Data are given as mean ± SD or *n* (%). BMI, body mass index; GA, gestational age.

Table 2 Intra- and interobserver reproducibility of biparietal diameter measurement using outer-to-outer (BPDoo) or outer-to-inner (BPDoi) caliper placement method

Measurement	Intraobserver		Interobserver
	Sonographer A	Sonographer B	
BPDoo	0.01 (2.08)	0.02 (1.28)	1.93 (4.16)
BPDoi	-0.16 (1.63)	-0.15 (1.33)	0.80 (3.10)

Data are given as mean difference (95% limits of agreement (LOA)) in percent. Upper and lower 95% LOA in each case can be calculated as mean difference ± value displayed.

marginally larger, by 0.09% (0.61 mm, $P = 0.034$), when measured in the TV than when measured in the TT plane. However, no such difference was observed for BPD or OFD. In terms of overall reproducibility, the mean differences in fetal head measurements were < 1% (2.26 mm) and the 95% limits of agreement were < 8% (14.45 mm) for both TV and TT planes (Figures S3–S7).

Overall, the reproducibility of caliper placement accounted for 50–60% of the reproducibility of measurements obtained in each plane. For example, the 95% limits of agreement for interobserver reproducibility of HC_{ellipse} in the TV plane was 4.87% (Table 3 and Figure S4) and the respective value for reproducibility of caliper replacements in the same plane was 3.05% (Table 3 and Figure S5), constituting approximately 60% of the total reproducibility.

Neither the TV or TT plane was associated with consistently better reproducibility. In addition, the 95% limits of agreement between sonographers measuring in the same plane (interobserver reproducibility within the same plane) were only slightly wider than the limits of agreement between TV and TT planes acquired and measured by the same sonographer (intraobserver reproducibility between TT and TV planes). This suggests that the effect of two sonographers measuring in the same plane is similar to that of the same sonographer measuring in different planes. The 95% limits of agreement were highest when two sonographers measured in different planes (interobserver reproducibility between TT and

TV planes) (Table 3 and Figure S7). Lastly, there was no significant difference between HC_{ellipse} measurements and an equal number of HC_{calculated} measurements.

DISCUSSION

Main findings

The aim of this study was to determine the most reproducible method for performing fetal head biometry for clinical practice and research, such as the production of standards. There are two approaches that could have been used. The first is to assess the accuracy of the ultrasound measurements against a 'gold standard'¹¹. However, defining a gold standard for fetal measurements is difficult. For example, magnetic resonance imaging allows clear visualization of the fetus, but estimates are still associated with errors¹². The use of phantoms has obvious limitations as inanimate structures do not effectively represent the variability of live structures¹³. The second approach is to assess the reproducibility of different methods of measuring fetal head biometry and to use the one with least error and bias¹⁴.

We found no major differences in the reproducibility of caliper placement for measuring BPDoo or BPDoi. Similarly, there was no difference in the reproducibility of measuring HC in the TV or TT planes. Using the ellipse facility (HC_{ellipse}) to measure HC was marginally more reproducible than using the two-diameters method (HC_{calculated}), with the former having interobserver 95% limits of agreement of just below 5% and the latter having interobserver 95% limits of agreement of just above 5%. This is probably due to the contribution of the OFD, which is the least reproducible head measurement in the two-diameters method.

The BPDoi method was used originally because the inner margin of the fetal skull in the distal field was sharper when using static B scanners^{15–18}. However, modern equipment produces a clearer image and so the BPDoi method appears to have no measurable effect on reproducibility (Table 2), even though caliper replacement constitutes up to 60% of the total variability. Therefore, choosing between BPDoo and BPDoi should be for reasons other than trying to reduce error, such as the protocol used (BPDoo) to develop international standards for monitoring fetal growth¹⁹. Another reason for using BPDoo is that it enables direct comparisons to be made between antenatal and postnatal measurements of HC^{20,21}.

Lastly, neither the TV nor TT plane was found to be consistently associated with better reproducibility. We did find that biometry in the TV plane yielded a very slightly larger HC than that measured in the TT plane. Although this was statistically significant, it was not clinically relevant (< 0.1%, 0.61 mm). Furthermore, when comparing the reproducibility of measuring HC in the TT and TV planes, the difference between sonographers measuring in the same plane was similar to that of the same sonographer measuring in different planes.

Table 3 Intraobserver and interobserver reproducibility of ultrasound measurements of fetal head biometry and caliper replacement in the same plane and between planes

Measurement	Within-plane reproducibility						Between-plane reproducibility	
	Intraobserver		Interobserver		Caliper replacement		TT vs TV	
	TT	TV	TT	TV	TT interobserver	TV interobserver	Intraobserver	Interobserver
BPD _{oo}	-0.14 (4.05)	-0.02 (3.43)	0.70 (6.65)	0.09 (4.78)	0.30 (3.16)	0.41 (2.69)	0.24 (5.63)	0.24 (5.84)
OFD	-0.31 (6.55)	-0.41 (5.50)	-0.03 (7.98)	-0.13 (7.66)	0.50 (4.63)	0.86 (4.58)	-0.13 (6.69)	-0.14 (8.11)
HC _{ellipse}	-0.06 (3.47)	-0.25 (3.32)	-0.48 (4.78)	-0.75 (4.87)	-0.43 (3.14)	0.12 (3.05)	-0.09 (4.53)	-0.10 (5.11)
HC _{calculated}	-0.23 (4.13)	-0.24 (3.53)	0.29 (5.54)	0.02 (5.02)	0.43 (2.91)	0.66 (2.92)	0.04 (4.78)	0.03 (5.50)

Data are given as mean difference (95% limits of agreement (LOA)) in percent. Upper and lower 95% LOA in each case can be calculated as mean difference \pm value displayed. BPD_{oo}, biparietal diameter measured using outer-to-outer caliper placement; HC_{calculated}, head circumference calculated from biparietal diameter and occipitofrontal diameter (OFD); HC_{ellipse}, head circumference measured using ellipse facility on ultrasound machine; TT, transthalamic; TV, transventricular.

Limitations and strengths

There are some limitations to our study. It can be argued that the use of six different sonographers working in pairs (rather than one pair) might have had an impact on the results. However, we feel that the study design more accurately reflects clinical practice, as most units have several qualified sonographers²². The setting of near-optimal conditions (i.e. experienced sonographers, healthy population and a scientifically rigorous study design) may be seen as creating an artificial setting. However, such conditions were necessary to minimize the contribution of confounding factors so as to define the variability in relation to the research question as purely as possible, which we see as a strength. The other strengths of our study were that reproducibility was assessed throughout pregnancy by recruiting a fixed number of women per week of gestation, and recommended methods²³ were used that have been shown to be the most appropriate for assessing the reproducibility of two measurements^{24,25}.

Our findings in context with other studies

A literature search was performed to identify all publications reporting reproducibility in the evaluation of fetal head biometry. We searched MEDLINE using the following keywords: biparietal diameter OR BPD OR occipitofrontal diameter OR OFD OR head circumference OR HC AND fetal OR foetal OR fetus OR foetus AND ultrasound OR ultrasonogra* OR ultra-sonogra* OR sonic* OR scan* AND reproducibility OR variability OR repeatability. Restrictions that were applied were studies in humans, in the English language and published after 1970. Additional references were added from an important article⁴. Nineteen relevant studies were identified (Table S1)^{15–18,22,26–39}. In most, the primary aim of the study was not to assess reproducibility but to build growth charts. The studies reporting either BPD method did not reveal large differences from our findings (the reported mean differences were $< 2\%$ for BPD_{oi}, with limits of agreement of $< 5\%$ ^{15–18,34,36}, and there were only two small studies^{29,38} on BPD_{oo} showing limits of agreement of 3.8 and 7.4 mm, respectively).

In only one study was the reproducibility of BPD_{oo} and BPD_{oi} reported in the same group of fetuses, which showed repeatability coefficients that were similar for both methods³⁴. Measurements of HC_{ellipse} were reproducible, with a mean difference of 3.5 mm and limits of agreement of < 12 mm (5%), in line with our results^{15–17,22,27–29,34,35,39}. No previous study was found comparing the two different planes of acquisition (TV vs TT) in the same population.

In conclusion, using modern ultrasound equipment, measurement of BPD is equally reproducible irrespective of whether calipers are placed BPD_{oo} or BPD_{oi}. However, BPD_{oo} can be used for both BPD and HC measurements and is also the method to measure OFD. It therefore seems simplest to use BPD_{oo} as a conceptually similar methodological approach for all head measurements. BPD_{oo} is also clinically useful (as part of the HC_{calculated}) for monitoring growth from the 'womb to the classroom'⁴⁰, as it is possible to track head size and growth from the antenatal to postnatal periods⁴¹. We found that HC measurements using HC_{ellipse} were associated with slightly better interobserver reproducibility than using HC_{calculated}, based on BPD and OFD. However, there was no large difference in reproducibility of BPD, OFD or HC_{ellipse} measured in the TV compared with TT plane. The mean difference in head size between these two planes was also minimal ($< 1\%$) at every gestational age.

We therefore recommend that standard fetal head biometry measurements are performed using the BPD_{oo}, OFD and HC_{ellipse}, all measured in the TT plane, based on the reproducibility evidence presented in this study and the existence of international standards based on these methods. In centers in which HC is measured in the TV plane, use of the international standards is still appropriate¹⁹.

ACKNOWLEDGMENTS

A.T.P. is the Chief Medical Officer of Intelligent Ultrasound and receives non-financial support from Philips Ultrasound. This project was supported by a generous grant from the Bill & Melinda Gates Foundation to the University of Oxford (Oxford, UK), for which we are very grateful.

REFERENCES

- Sonographic examination of the fetal central nervous system: guidelines for performing the 'basic examination' and the 'fetal neurosonogram'. *Ultrasound Obstet Gynecol* 2007; **29**: 109–116.
- Papageorghiou AT, Sarris I, Ioannou C, Todros T, Carvalho M, Pilu G, Salomon LJ. Ultrasound methodology used to construct the fetal growth standards in the INTERGROWTH-21st Project. *BJOG* 2013; **120** Suppl 2: 27–32.
- Salomon LJ, Alfirevic Z, Berghella V, Bilardo C, Hernandez-Andrade E, Johnsen SL, Kalache K, Leung KY, Malinger G, Munoz H, Prefumo F, Toi A, Lee W. Practice guidelines for performance of the routine mid-trimester fetal ultrasound scan. *Ultrasound Obstet Gynecol* 2011; **37**: 116–126.
- Ioannou C, Talbot K, Ohuma E, Sarris I, Villar J, Conde-Agudelo A, Papageorghiou A. Systematic review of methodology used in ultrasound studies aimed at creating charts of fetal size. *BJOG* 2012; **119**: 1425–1439.
- Napolitano R, Dharni J, Ohuma EO, Ioannou C, Conde-Agudelo A, Kennedy SH, Villar J, Papageorghiou AT. Pregnancy dating by fetal crown-rump length: a systematic review of charts. *BJOG* 2014; **121**: 556–565.
- Villar J, Altman DG, Purwar M, Noble JA, Knight HE, Ruyan P, Cheikh Ismail L, Barros FC, Lambert A, Papageorghiou AT, Carvalho M, Jaffer YA, Bertino E, Gravett MG, Bhutta ZA, Kennedy SH. The objectives, design and implementation of the INTERGROWTH-21st Project. *BJOG* 2013; **120** Suppl 2: 9–26.
- Wanyonyi S, Napolitano R, Ohuma E, Salomon L, Papageorghiou A. Image-scoring system for crown-rump length measurements. *Ultrasound Obstet Gynecol* 2014; **44**: 649–654.
- Ioannou C, Sarris I, Hoch L, Salomon LJ, Papageorghiou AT. Standardisation of crown-rump length measurement. *BJOG* 2013; **120** Suppl 2: 38–41.
- Sarris I, Ioannou C, Ohuma E, Altman D, Hoch L, Cosgrove C, Fathima S, Salomon L, Papageorghiou A. Standardisation and quality control of ultrasound measurements taken in the INTERGROWTH-21 Project. *BJOG* 2013; **120** Suppl 2: 33–37.
- Leung TN, Pang MW, Daljit SS, Leung TY, Poon CF, Wong SM, Lau TK. Fetal biometry in ethnic Chinese: biparietal diameter, head circumference, abdominal circumference and femur length. *Ultrasound Obstet Gynecol* 2008; **31**: 321–327.
- Ioannou C, Javaid MK, Mahon P, Yaqub MK, Harvey NC, Godfrey KM, Noble JA, Cooper C, Papageorghiou AT. The effect of maternal vitamin D concentration on fetal bone. *J Clin Endocrinol Metab* 2012; **97**: E2070–E2077.
- Lo Zito L, Kadji C, Cannie M, Kacem Y, Strizek B, Mbonyumutwa M, Wuyts F, Jani J. Determination of fetal body volume measurement at term with magnetic resonance imaging: effect of various factors. *J Matern Fetal Neonatal Med* 2013; **26**: 1254–1258.
- Ioannou C, Sarris I, Yaqub MK, Noble JA, Javaid MK, Papageorghiou AT. Surface area measurement using rendered three-dimensional ultrasound imaging: an in-vitro phantom study. *Ultrasound Obstet Gynecol* 2011; **38**: 445–449.
- Reitsma JB, Rutjes AW, Khan KS, Coomarasamy A, Bossuyt PM. A review of solutions for diagnostic accuracy studies with an imperfect or missing reference standard. *Clin Epidemiol* 2009; **62**: 797–806.
- Al-Meshari AA, Raber H. Fetal biparietal diameter in Saudi Arabia. *Ann Saudi Med* 1987; **7**: 227–233.
- Chan LW, Fung TY, Leung TY, Sahota DS, Lau TK. Volumetric (3D) imaging reduces inter- and intraobserver variation of fetal biometry measurements. *Ultrasound Obstet Gynecol* 2009; **33**: 447–452.
- Di Battista E, Bertino E, Benso L, Fabris C, Aicardi G, Pagliano M, Bossi A, De Biasio P, Milani S. Longitudinal distance standards of fetal growth. Intrauterine and Infant Longitudinal Growth Study: IILGS. *Acta Obstet Gynecol Scand* 2000; **79**: 165–173.
- Gull I, Fait G, Har-Toov Y, Kupfermanc MJ, Lessing JB, Jaffa AJ, Wolman I. Prediction of fetal weight by ultrasound: the contribution of additional examiners. *Ultrasound Obstet Gynecol* 2002; **20**: 57–60.
- Papageorghiou AT, Ohuma EO, Altman DG, Todros T, Cheikh Ismail L, Lambert A, Jaffer YA, Bertino E, Gravett MG, Purwar M, Noble JA, Pang R, Victora CG, Barros FC, Carvalho M, Salomon LJ, Bhutta ZA, Kennedy SH, J. Villar J, for the International Fetal and Newborn Growth Consortium for the 21st Century (INTERGROWTH-21st). International standards for fetal growth based on serial ultrasound measurements: the Fetal Growth Longitudinal Study of the INTERGROWTH-21st Project. *Lancet* 2014; **384**: 869–879.
- Cheikh Ismail L, Knight HE, Ohuma EO, Hoch L, Chumlea WC. Anthropometric standardisation and quality control protocols for the construction of new, international, fetal and newborn growth standards: the INTERGROWTH-21st Project. *BJOG* 2013; **120** Suppl 2: 48–55.
- Villar J, Cheikh Ismail L, Victora CG, Ohuma EO, Bertino E, Altman DG, Lambert A, Papageorghiou AT, Carvalho M, Jaffer YA, Gravett MG, Purwar M, Frederick IO, Noble AJ, Pang R, Barros FC, Chumlea C, Bhutta ZA, Kennedy SH; for the International Fetal and Newborn Growth Consortium for the 21st Century (INTERGROWTH-21st). International standards for newborn weight, length, and head circumference by gestational age and sex: the Newborn Cross-Sectional Study of the INTERGROWTH-21st Project. *Lancet* 2014; **384**: 857–868.
- Sarris I, Ioannou C, Chamberlain P, Ohuma E, Roseman F, Hoch L, Altman DG, Papageorghiou AT. Intra- and interobserver variability in fetal ultrasound measurements. *Ultrasound Obstet Gynecol* 2012; **39**: 266–273.
- Bland JM, Altman DG. Statistical methods for assessing agreement between two methods of clinical measurement. *Lancet* 1986; **1**: 307–310.
- Brennan P, Silman A. Statistical methods for assessing observer variability in clinical measures. *BMJ* 1992; **304**: 1491–1494.
- Bland JM, Altman DG. A note on the use of the intraclass correlation coefficient in the evaluation of agreement between two methods of measurement. *Comput Biol Med* 1990; **20**: 337–340.
- Bergsjö P, Bakke T, Bjerkedal T. Growth of the fetal skull, with special reference to weight-for-dates of the newborn child. *Acta Obstet Gynecol Scand* 1976; **55**: 53–57.
- Deter RL, Harrist RB, Hadlock FP, Carpenter RJ. Fetal head and abdominal circumferences: I. Evaluation of measurement errors. *J Clin Ultrasound* 1982; **10**: 357–363.
- Hadlock FP, Deter RL, Harrist RB, Park SK. Fetal head circumference: relation to menstrual age. *AJR Am J Roentgenol* 1982; **138**: 649–653.
- Johnsen SL, Wilsaard T, Rasmussen S, Sollie R, Kiserud T. Longitudinal reference charts for growth of the fetal head, abdomen and femur. *Eur J Obstet Gynecol Reprod Biol* 2006; **127**: 172–185.
- Krampl E, Lees C, Bland JM, Espinoza Dorado J, Moscoso G, Campbell S. Fetal biometry at 4300 m compared to sea level in Peru. *Ultrasound Obstet Gynecol* 2000; **16**: 9–18.
- Larsen T, Petersen S, Greisen G, Larsen JF. Normal fetal growth evaluated by longitudinal ultrasound examinations. *Early Hum Dev* 1990; **24**: 37–45.
- Lima JC, Miyague AH, Filho FM, Nastro CO, Martins WP. Biometry and fetal weight estimation by two-dimensional and three-dimensional ultrasonography: an intraobserver and interobserver reliability and agreement study. *Ultrasound Obstet Gynecol* 2012; **40**: 186–193.
- Merialdi M, Caulfield LE, Zavaleta N, Figueroa A, Costigan KA, Dominici F, Dipietro JA. Fetal growth in Peru: comparisons with international fetal size charts and implications for fetal growth assessment. *Ultrasound Obstet Gynecol* 2005; **26**: 123–128.
- Pang MW, Leung TN, Sahota DS, Lau TK, Chang AM. Customizing fetal biometric charts. *Ultrasound Obstet Gynecol* 2003; **22**: 271–276.
- Perni SC, Chervenak FA, Kalish RB, Magherini-Rothe S, Predanic M, Streltsoff J, Skupski DW. Intraobserver and interobserver reproducibility of fetal biometry. *Ultrasound Obstet Gynecol* 2004; **24**: 654–658.
- Persson PH, Grenner L, Gennser G, Gullberg B. Normal range curves for the intrauterine growth of the biparietal diameter. *Acta Obstet Gynecol Scand Suppl* 1978; **78**: 15–20.
- Salpou D, Kiserud T, Rasmussen S, Johnsen SL. Fetal age assessment based on 2nd trimester ultrasound in Africa and the effect of ethnicity. *BMC Pregnancy Childbirth* 2008; **8**: 48.
- Shepard M, Filly RA. A standardized plane for biparietal diameter measurement. *J Ultrasound Med* 1982; **1**: 145–150.
- Yang F, Leung KY, Lee YP, Chan HY, Tang MH. Fetal biometry by an inexperienced operator using two- and three-dimensional ultrasound. *Ultrasound Obstet Gynecol* 2010; **35**: 566–571.
- Villar J, Papageorghiou AT, Pang R, Salomon LJ, Langer A, Victora C, Purwar M, Chumlea C, Qingqing W, Scherjon SA, Barros FC, Carvalho M, Altman DG, Giuliani F, Bertino E, Jaffer YA, Cheikh Ismail L, Ohuma EO, Lambert A, Noble JA, Gravett MG, Bhutta ZA, Kennedy SH. Monitoring human growth and development: a continuum from the womb to the classroom. *Am J Obstet Gynecol* 2015; **213**: 494–499.
- Villar J, Papageorghiou AT, Pang R, Ohuma EO, Cheikh Ismail L, Barros FC, Lambert A, Carvalho M, Jaffer YA, Bertino E, Gravett MG, Altman DG, Purwar M, Frederick IO, Noble AJ, Victora CG, Bhutta ZA, Kennedy SH; for the International Fetal and Newborn Growth Consortium for the 21st Century (INTERGROWTH-21st). The likeness of fetal growth and newborn size across non-isolated populations in the INTERGROWTH-21(st) Project: the Fetal Growth Longitudinal Study and Newborn Cross-Sectional Study. *Lancet Diabetes Endocrinol* 2014; **2**: 781–792.

SUPPORTING INFORMATION ON THE INTERNET



Table S1 and Figures S1–S7 may be found in the online version of this article.