

SCIENTIFIC REPORTS



OPEN

Distribution of reported syphilis cases in South China: spatiotemporal analysis

Ngai Sze Wong^{1,2,3}, Lei Chen^{4,5}, Joseph D. Tucker^{1,2,6}, Peizhen Zhao^{4,5}, Beng Tin Goh^{5,7}, Chin Man Poon^{3,8}, Ligang Yang^{4,5}, Bin Yang^{4,5}, Heping Zheng^{4,5} & Shujie Huang^{4,5}

There was a varied spatial distribution of reported syphilis cases across cities in South China. This study aims to identify and describe spatiotemporal clusters of primary and secondary syphilis (P/S) cases in this region. Reported syphilis cases in Guangdong Province, China, from January 2014 to June 2015 were collected from the national centralized reporting system. Spatiotemporal clusters of P/S were identified and cross-validated by calculating local Moran's I, performing hotspot analysis (Getis-Ord G_i^*), and constructing a discrete Poisson model in SaTScan. Reported cases within and outside the clusters were compared by bivariable and multivariable logistic regression. Out of 17,691 reported P/S cases, 11% were in the identified spatiotemporal clusters. The monthly P/S notification rate (per 100,000 persons) ranged between 0.6 and 1. The identified clusters were located in 14, out of 126, counties in eight, out of 21, cities. Cases of older age, living in rural area and taking self-initiated syphilis test were more likely to be in the clusters. Some areas bore a greater burden of P/S in Guangdong Province. Routine spatiotemporal analysis of P/S cases may be useful for enhancing syphilis control programs by strategic location-based service planning.

In China, notifiable sexually transmitted infections (STIs) include HIV/AIDS, syphilis and gonorrhoea. Among the notifiable STIs, syphilis, caused by *Treponema pallidum*, is the most commonly reported STI, imposing an increasing burden in China in the past decade. The average annual increase in the incidence of syphilis was as high as 16.3% between 2004 and 2013, comparable to that for HIV/AIDS (16.3%) and much higher than that for gonorrhoea (−8.5%)¹. Although the annual rate of primary and secondary syphilis (P/S) notification (per 100,000 persons) had dropped from 13.44 in 2012 to 9.81 in 2015 in China, it was still much higher than that in the United States (US) (ranging from 5 in 2012 to 7.6 in 2015, <https://www.cdc.gov/std/stats15/tables/27.htm>). While male-to-male-sex is the main route of transmission in the US and Europe^{2,3}, heterosexual transmission predominates in China. The epidemiologic difference in the route of transmission is illustrated by the variation in the gender distribution of P/S cases. More than 90% of the cases were male in the US (<https://www.cdc.gov/std/stats15/tables/27.htm>), but male comprised only 51% of all cases in China as shown in the National STD Management Information System.

Previous studies showed an uneven geographic distribution of reported syphilis cases in China and other countries including Canada^{4–8}. Spatiotemporal analyses of syphilis are important for two reasons. First, mapping of syphilis cases over time and cluster detection could identify potential hot spot areas so as to guide the resource allocation for epidemic control⁸. Second, an understanding of the characteristics of syphilis cases in spatiotemporal clusters would be important for identifying new target groups for intervention. As sex networking patterns may vary over time and space, identifying the spatiotemporal clustering pattern from readily available surveillance data (reported P/S cases) could be an alternative yet feasible approach. By definition the P/S stages refer to syphilis infection in the preceding 1 year and are associated with high infectivity⁹, so the reported number of P/S

¹Institute for Global Health & Infectious Diseases, University of North Carolina at Chapel Hill, Chapel Hill, North Carolina, USA. ²University of North Carolina Project-China, Guangzhou, Guangdong, China. ³Stanley Ho Centre for Emerging Infectious Diseases, The Chinese University of Hong Kong, Hong Kong, China. ⁴Dermatology Hospital, Southern Medical University, Guangzhou, Guangdong, China. ⁵Guangdong Provincial Dermatology Hospital, Guangzhou, Guangdong, China. ⁶SESH Global, Guangzhou, Guangdong, China. ⁷Royal London Hospital, London, United Kingdom. ⁸The Jockey Club School of Public Health and Primary Care, The Chinese University of Hong Kong, Hong Kong, China. Correspondence and requests for materials should be addressed to H.Z. (email: zhhp@hotmail.com) or S.H. (email: huangshj_jm@126.com)

cases could be a useful marker for active transmission of syphilis in the community. Studies have suggested that an investigation of syphilis outbreaks in conjunction with spatiotemporal analyses could inform tailored strategies, in response to different modes of transmission².

Only a few studies have examined the spatial heterogeneity and identified the spatial clusters of reported syphilis cases in China^{4,5,10}. Most of them applied only one method for cluster detection without cross validation. The purpose of this study was to identify and describe spatiotemporal clusters of primary and secondary syphilis cases at county level in Guangdong Province, China.

Methods

Study area – Guangdong, China. The number of reported syphilis cases (50,019 cases in 2015) in Guangdong Province was the highest among all provinces in China¹¹. A dramatic rise of total reported syphilis cases from 13.47 per 100,000 persons in 2000 to 51.71 per 100,000 persons in 2013 was recorded^{11,12}. The province is located in the southern part of China. It composes of 21 cities, which can be subdivided into 126 smaller counties. In 1995–2013, the population of permanent residents in the province increased from 73,874,900 to 106,440,000, and the proportion of urban population increased from 39% to 68%¹³. The population was dynamic, with an annual population immigration rate of 11% and an emigration rate of 9% in 2013.

Data source and processing. From the national case-based surveillance system (CBSS), we retrospectively accessed data of reported syphilis cases who were diagnosed and living in Guangdong Province from 1 January 2014 to 30 June 2015. Over this study period, correct syphilis staging rate reported by doctors was higher due to additional training of doctors in sexually transmitted diseases (STD) clinics. Syphilis cases were defined by the presence of two positive laboratory tests (nontreponemal test and treponemal test) along with clinical signs and symptoms consistent with syphilis¹⁰. Permanent resident population data in Guangdong Province at county level in 2011 were collected from Leprosy Management Information System in China. We also downloaded Chinese administrative boundaries in city and county level from GADM database (<http://www.gadm.org/country>). Because of the change of county number and their respective boundaries across time, county boundaries were revised from the downloaded version so as to match with the list of counties in the case reporting dataset.

IRB approval was obtained from the Guangdong Provincial Center for Skin Diseases and STI Control, China, and from University of North Carolina at Chapel Hill. No informed consent was obtained as the collected data were anonymized and accessed retrospectively. The datasets analysed during the current study are not publicly available because the data are owned by third parties. Access to these data and permission could be inquired through the Guangdong Provincial Center for Skin Diseases and STI Control, China. All methods were performed in accordance with the relevant guidelines and regulations.

Variables. We used P/S notification rate (per 100,000 persons) as an outcome variable in spatiotemporal analyses. In the dataset, socio-demographics (age, gender, ethnicity, education level, marital status, and economic status), residential location, syphilis diagnosis date and staging, and sites for screening test including STD clinic, voluntary counselling and testing (VCT) sites and community-based organizations (CBOs), hospitals (routine test for non-STD patients and patients undergoing pre-surgery procedure) and institutes (routine syphilis tests for immigrants, blood recipients/donors/sellers, new army recruits and staff in entertainment sites) were accessed. In addition, Euclidean distance (i.e. straight line distance) between the centroids of residential and diagnosis counties was calculated, and adjacency of counties, defined as the sharing of their administrative boundaries, for syphilis diagnosis were determined for each case in ArcGIS 10.3. Rural and urban counties were defined by the name of the county, according to the guideline from the Chinese government¹⁴.

Spatiotemporal cluster detection. We used time-series analysis (seasonal-trend decomposition procedure based on Loess, STL)¹⁵ in R3.2.2 to understand the temporal trend of reported P/S cases across cities in the province (Fig. 1). In STL, daily number of cases was smoothed in 14-day window.

Global Moran's I of reported P/S cases per 100,000 persons at county level was calculated to examine the spatial clustering pattern. A Moran's I value near +1 indicates positive spatial autocorrelation (similar values are found together forming a cluster), 0 indicates random distribution, whereas a value near -1 indicates negative spatial autocorrelation (dissimilar values are found together). To identify location of clusters, local Moran's I was computed and hotspot analysis (Getis-Ord G_i^*) were performed in ArcGIS10.3. The spatial analysis is based on the first law of geography, that things closer are more similar than things farther apart (spatial autocorrelation)¹⁶. Local Moran's I is a measure of spatial autocorrelation, the analysis of which detects clusters with similar neighbouring features and outliers spatially. In hotspot analysis, spatial clusters were classified as hot spot (high value) or cold spot (low values). To demonstrate and validate the temporal change of spatial clustering and clusters, we performed all analyses on a monthly basis with p-value < 0.05^{17,18}.

Spatiotemporal clusters of P/S rate were also detected by discrete Poisson model in SaTScanTM 9.4. Within a cylindrical scanning window, analyses were performed with the circular base corresponding to space, and the height corresponding to time. Clusters were detected when the number of expected events was larger than the observed ones¹⁹. We set 3% of population as the maximum spatial cluster size and 90% of days as the maximum temporal cluster size. Sensitivity analyses with 1%, 2%, 5% and 9% of population with 90% time window were performed. Significance of the defined clusters was determined by Monte Carlo simulations with 999 replications, with p-value < 0.05 as threshold. We input the number of cases per county per day in 'case' file, number of total population size in county in 'pop' file, and latitude and longitude of county centroid in 'geo' file.

Three methods (local Moran's I, hotspot analysis, and SaTScan) were used for identifying spatiotemporal clusters for cross-validation²⁰. The clusters were identified if all methods detected the same cluster in space and

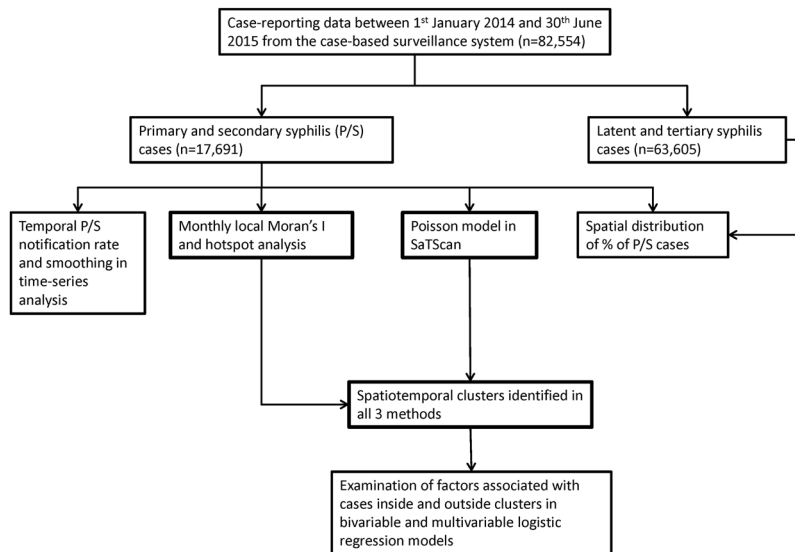


Figure 1. Study layout.

time. Relative risk (RR) of each identified cluster was extracted from the output file in SaTScan. High RR indicates higher risk of infection of cases living inside the cluster compared to those living outside.

Statistical analysis. Bivariable and multivariable logistic regression models were constructed in IBM SPSS Statistics 21 to identify factors associated with cases inside the clusters detected (in all methods of SaTScan, local Moran's I and hotspot analysis). Significance of association was defined when p value was less than 0.05. Independent variables included socio-demographics (age, gender, and ethnicity), location of syphilis diagnosis in the same or adjacent county as of residential location, and sites for screening test. In multivariable logistic regression, independent variables were adjusted by demographic confounders of age groups and gender, which adjusted the odds ratio more than either confounder alone. In addition, we defined high and low RR cluster with reference to the median RR of cases living in identified clusters. To examine the difference of characteristics between cases living in high and low RR clusters, univariate analysis was performed.

Disclaimer. The opinions expressed by authors contributing to this journal do not necessarily reflect the opinions of the institutions with which the authors are affiliated.

Results

Syphilis temporal trends. From January 2014 through June 2015, 82,554 syphilis cases were reported in Guangdong Province. Among them, 17,691 (21%) were P/S cases, 62,662 (76%) were latent syphilis, 943 (1%) were tertiary syphilis and 1,258 (2%) were congenital syphilis. Annual male P/S notification rate (per 100,000 persons) was 13 and female P/S notification rate was 11 in 2014. The monthly P/S notification rate (per 100,000 persons) ranged between 0.6 (February 2015) and 1 (May 2014). The monthly rate in 2014 was higher than that in 2015, and no obvious peaks were identified. The troughs of monthly P/S notification rate were observed during the Lunar New Year (STD clinics closed during public holidays), February 2014 and February 2015, respectively. A month (March) following the trough, the notification rate increased over the preceding month (January).

During the study period, the temporal trends of reported P/S cases were shown to vary between cities (Fig. 2). Some cities experienced persistently low level of P/S cases over time (e.g. City F, City J, City M, City N and City S), and a few had declining trends (City R and City P). However, some cities showed the presence of occasional high level of P/S activity (City A, City E, City K and City U).

Distribution of spatiotemporal clusters. Global Moran's I index indicated a significant and obvious positive spatial autocorrelation of P/S notification rate in 2014 (index = 0.22, $p < 0.01$) and the first half-year of 2015 (index = 0.25, $p < 0.01$). Temporally, the index was significant in all months, except November 2014 (Fig. 3). Peaks of indexes were observed in February 2014, and from April 2015 to June 2015, indicating high heterogeneity positive spatial autocorrelation of notification rates among counties in these months.

A total of 1968 cases (11%) were present inside the detected clusters, with a male to female ratio at 0.77. Clusters were identified in 14 out of 126 counties (11%), covering eight out of 21 cities (38%) (Fig. 4, and relative risk of clusters in Supplementary Fig. S1). In particular, clusters were detected in two of five counties in City P, and in three of eight counties in City H. Economically, the province can be divided into Pearl River Delta (PRD) region and areas outside PRD as shown in Fig. 2. PRD is a highly urbanized economic hub of China, covering nine cities in Guangdong Province. Clusters were found in four of nine cities (44%) in PRD, namely: City B, City L, small part of City A and eastern part of City C. Outside PRD, clusters were identified in four of 12 cities (33%), including City H (clusters mostly in rural counties), north-western part of City R (mostly rural), south-eastern part of City U (rural), and City P (including both rural and urban). Spatial distribution of identified clusters and

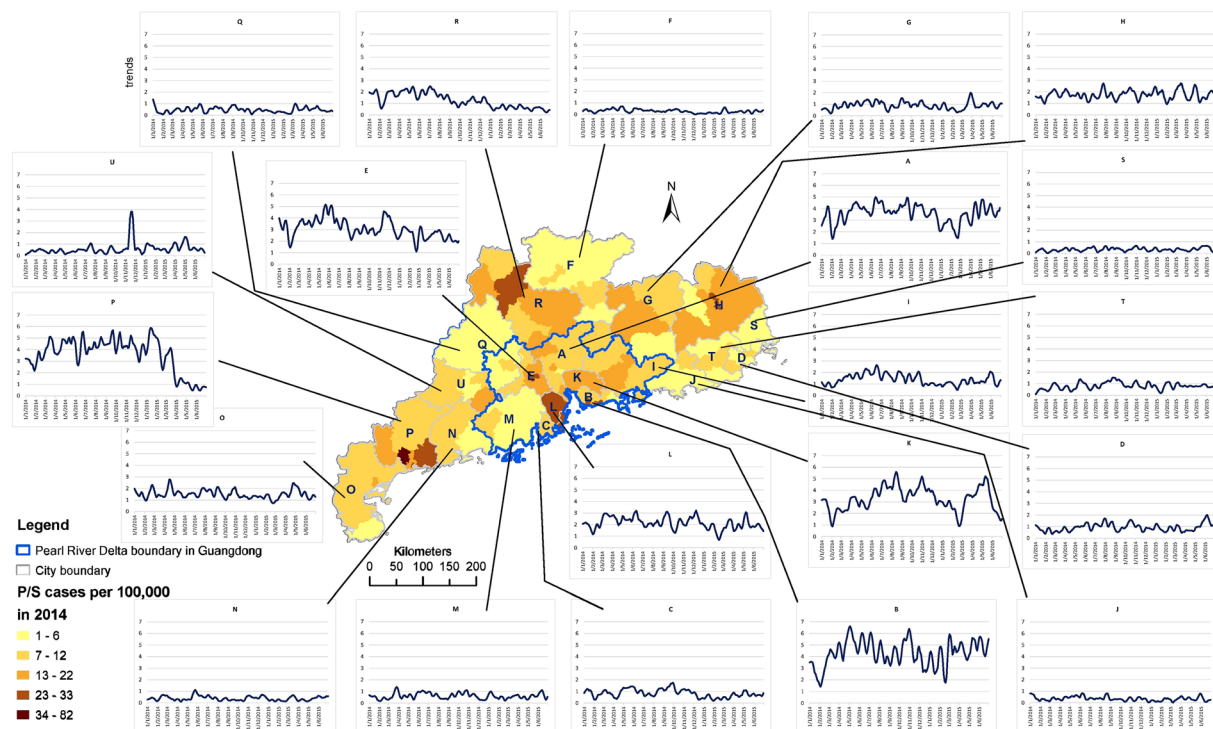


Figure 2. Geographic distribution of rate of primary and secondary syphilis (P/S) cases (per 100,000 persons) in county level in 2014, and the smoothed trends of bi-weekly number of reported P/S syphilis cases in city level of Guangdong Province from January 2014 through June 2015 (the map was created in ArcGIS 10.3).

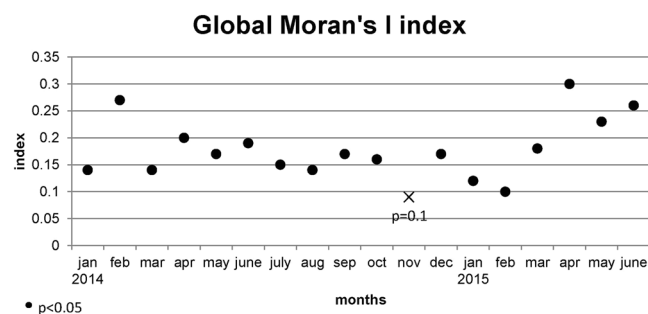


Figure 3. Monthly distribution of global Moran's I index in January 2014 – June 2015, with significant spatial clustering as black dots ($p < 0.05$) and insignificant cluster as a cross. A positive global Moran's I index indicates a clustered pattern.

proportion of P/S cases in total reported cases in the study period were both mapped in Fig. 5. Clusters identified in City U, City P, City H and City L had a very high proportion of P/S cases. All clusters had a high P/S notification rate, >21 per 100,000 persons, in 1.5 years.

Socio-demographics of cases within spatiotemporal clusters. Comparing with the cases aged >60 (reference group), cases aged ≤ 25 (OR = 0.38; 95% C.I. = 0.32 to 0.45), aged 26–40 (OR = 0.56, 95% C.I. = 0.49 to 0.63), and aged 41–60 (OR = 0.57, 95% C.I. = 0.5 to 0.65) had lower odds to reside inside the clusters (Table 1). Gender and ethnicity were however not significantly different between cases inside and outside the clusters. Adjusted by age groups and male gender, cases living in rural area had higher odds to reside inside the clusters (aOR = 5.29, 95% C.I. = 4.17 to 6.70). Taking syphilis screening in institutes as a reference group, cases tested in VCT sites/CBOs (aOR = 4.66, 95% C.I. = 2.95 to 7.34) and STD clinics (aOR = 1.70, 95% C.I. = 1.14 to 2.55) had higher odds to be inside the clusters. On the contrary, those tested in hospitals had lower odds to be found inside the clusters (aOR = 0.43, 95% C.I. = 0.27 to 0.68). Considering the location of syphilis diagnosis, cases diagnosed in or adjacent to their residential county (aOR = 0.31, 95% C.I. = 0.25 to 0.39) had lower odds to be inside the clusters.

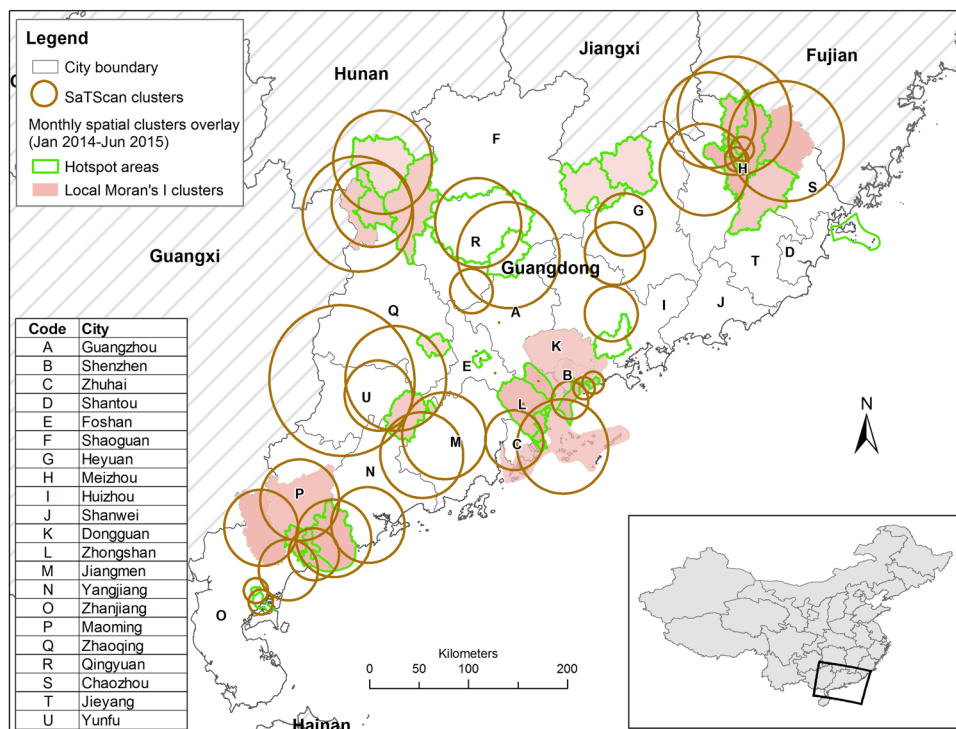


Figure 4. Geographic distribution of spatiotemporal clusters ($p < 0.05$) detected by Local Moran's I, hotspot analysis and SaTScan (3% of population, 90% of time windows) at county level in Guangdong Province, January 2014–June 2015(the map was created in ArcGIS 10.3).

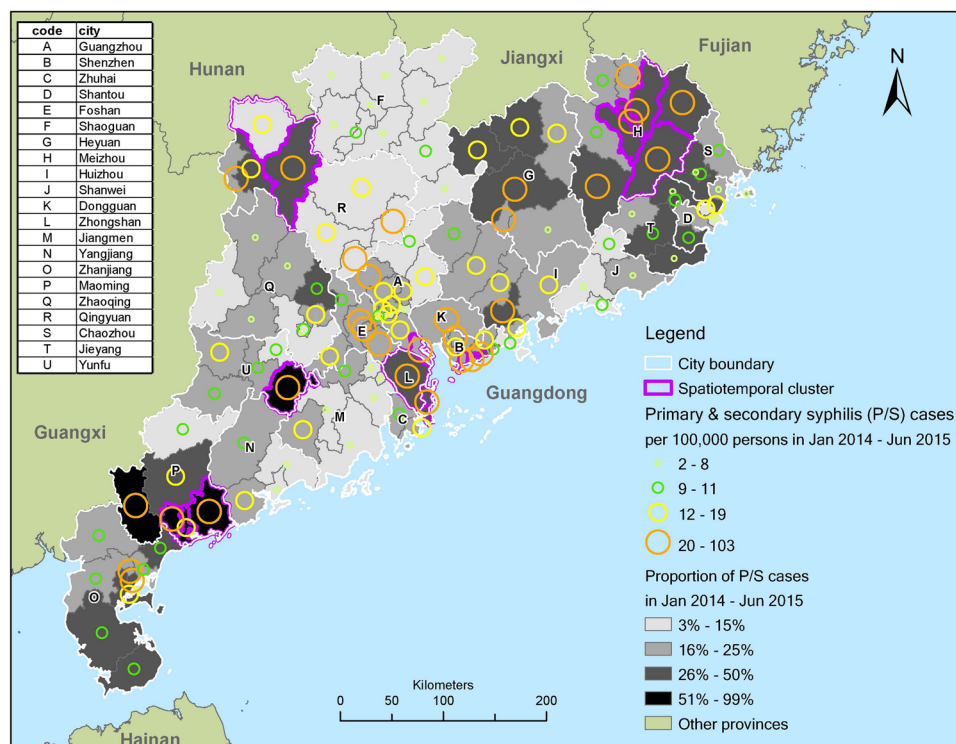


Figure 5. Mapping of identified clusters by all three methods, rate of primary and secondary syphilis (P/S) cases (per 100,000 persons), and proportion of P/S cases in total syphilis cases (the map was created in ArcGIS 10.3).

	N (n = 17691)	non-cluster (n = 15723)		cluster (n = 1968)		Univariate analysis		Multivariable analysis#	
		freq	%	freq	%	OR	95% C.I.	aOR	95% C.I.
Socio-demographics									
Gender									
Female	7538	6685	43%	853	43%	ref			
Male	10153	9038	57%	1115	57%	0.97	0.88 to 1.06		
Age category									
<=25	2889	2680	17%	209	11%	0.38	0.32 to 0.45*		
26-40	6132	5500	35%	632	32%	0.56	0.49 to 0.63*		
41-60	5358	4796	31%	562	29%	0.57	0.5 to 0.65*		
>60	3312	2747	17%	565	29%	ref			
Residential county									
Rural	3167	2720	17%	447	23%	1.41	1.25 to 1.56*	5.29	4.17 to 6.70*
Urban	14524	13003	83%	1521	77%	ref			
Diagnosed in the same or adjacent county	15755	14067	89%	1688	86%	0.71	0.62 to 0.81*	0.31	0.25 to 0.39*
Sites for screening test									
STD clinic	1714	1585	36%	129	47%	1.20	0.81 to 1.77	1.70	1.14 to 2.55*
VCT sites or CBOs	278	217	5%	61	22%	4.13	2.64 to 6.47*	4.66	2.95 to 7.34*
Hospitals [^]	2128	2076	47%	52	19%	0.37	0.24 to 0.57*	0.43	0.27 to 0.68*
Institutes [§]	534	500	11%	34	12%	ref			

Table 1. Comparison of characteristics between cases (primary and secondary syphilis) in non-cluster and cluster areas, defined by all three spatiotemporal methods. OR – odds ratio; aOR – adjusted odds ratio; C.I. – confidence interval; IQR – interquartile range; VCT – voluntary counseling and testing; STD – sexually transmitted diseases [#]adjusted by age group and male gender in multivariable logistic regression model [^]routine syphilis screening test in hospitals for non-STD patients or pre-surgery patients [§]routine syphilis screening test in institutes for immigrant, prisoner (male and female), drug users in drug rehabilitation, blood recipient, blood donor, blood seller, new army recruits, and staff in entertainment sites. *p-value < 0.05.

When cases living in high RR clusters ($RR > 4$) were compared to those in low RR clusters ($RR \leq 4$), male cases had lower odds to be inside high RR clusters (OR = 0.67, 95% C.I. = 0.56 to 0.8). (Supplementary Table S1) Otherwise, the rest of the factors remained to be significant but in stronger associations.

Discussion

We observed a spatial variation of reported P/S rate over 18 months and identified a number of spatiotemporal clusters in Guangdong Province, China. The existence of spatial clustering is consistent with the findings in a previous study in Shenzhen (City B)⁵. Interestingly, the clusters were not concentrated in one area, forming a bigger cluster, but sparsely distributed in four PRD cities (urban areas) and four non-PRD cities (mostly rural areas). Given the observed spatiotemporal distribution of cases, diffusion of syphilis from one place to another was rather unlikely in the study period. Socio-demographics and syphilis testing sites were factors significantly associated with P/S cases within the clusters. This study expands the literature by identifying the factors associated with P/S clusters in Guangdong, China.

In this study, older cases were more likely to be in P/S clusters, forming a possible high risk subgroup in community. In a previous Chinese study, around half of STD patients aged above 50 were male clients of female sex workers (FSW), of which a quarter reported multiple sex partners^{21,22}. FSW can be roughly ranked by “tiers” with reference to the price charged per sex trade or the type of stationed venue of FSW (more visible and well-managed venues for middle/high-tier FSW, and street-based venues and more invisible venues for low-tier FSW). The preference of low-tier FSW among older men, found in a previous study, might shed light on this observation²³. As compared with middle- or high-tier FSW, the transmission risk of syphilis by sexual contact with low-tier FSW would be higher for two main reasons. First, the prevalence of syphilis in low-tier FSW (11.8%) was much higher than middle/high-tier FSW (3.2%)²⁴ and male clients of FSW (8.8%)²⁵. In general, the number of clients per day was higher and history of engaging in sex trade was longer among low-tier FSW than high- and middle-tier FSW²⁶. Second, lower-tier FSW usually charged less and were compromised to have risky sexual behaviour, due to their lower bargaining power for their sex work. Other studies had reported that older aged were less likely to get diagnosed at primary stage or secondary stage because of their lower perceived risk and less understanding on STD^{5,27}. However, if they were diagnosed with P/S, they were more likely to be in P/S clusters than other age groups.

Our study revealed a potential transmission of syphilis in rural areas in China. This finding is consistent with a study in North Carolina, U.S., where high rate of syphilis and gonorrhoea in rural areas was reported²⁸. However, clusters were not limited to rural areas in the North Carolina study. Instead, large clusters covering urban, metropolitan, small town, and rural areas were identified²⁸. Similar to older clients of FSW, clients in rural area might prefer middle and low-tier FSW, because of their lower affordability for sex services in rural areas in China. A previous study found that more than 80% of FSW in urban periphery or rural area were middle and low-tier FSW²⁹.

Although the syphilis prevalence of these FSW was not high (2%), the condom usage rate in the previous month was low at 50%, and 23.5% of them had experienced STD symptom in the past 1 year²⁹. Another study in rural area of Guangxi Province reported a high syphilis prevalence of low-tier FSW at 12.5%, and 75% of their clients were aged ≥ 40 years old³⁰. In addition, a previous study in Meizhou (City H), one of the clusters identified in this study, showed that most of the syphilis cases were farmers or unemployed, and less educated with sexual health³¹. This observation partly reflected a lower affordability for commercial sex and lower awareness of sexual health among the infected cases in the city. Expansion of some public health interventions targeting older adults in rural areas, such as sexual health education and promotion of condom use is, therefore, needed.

We found that P/S syphilis cluster cases were more likely to be in the vicinity of STD clinics, VCT sites, and CBOs. This finding echoed some previous studies in the U.S., where patients recently diagnosed with STI (gonorrhoea and chlamydia) were more likely to have past history of STI^{32,33}. These patients with repeated STI might be the core transmitters, who shall be targeted for risk reduction³³. Individuals visiting these sites may have higher odds to experience symptoms or have high risk sexual behaviours recently. They were more likely to be diagnosed early²⁷, and probably be in the cluster (recent transmission network). Settings like STD clinics and VCT sites/CBOs are key places for capturing P/S cases for screening, diagnosis and treatment. An increased accessibility of STD clinics, VCT sites and CBOs could enhance STI testing rate. As sexual partners of positive cases have higher risk of being infected, effective partner notification and contact tracing are crucial to identify possibly linked syphilis cases in the same sexual network. Therefore, in addition to scaling up the screening coverage, partner notification, contact tracing and risk reduction programme should be implemented in these settings to intervene ongoing transmission in the community².

We acknowledged the possibility of non-locally acquired infection, which could not be reflected from the study results due to the limitations of data in the case-reporting system. For instance, no clusters were detected in Dongguan city (City K), an economic centre in PRD with highly mobile population and high syphilis prevalence among detained FSW (15.4%) and their clients (9.2%)³⁴. However, more than 90% of the registered residency among these detained FSW and their clients' were provinces other than Guangdong³⁴. As most of the clients of FSW were unlikely to be local residents³⁴, their diagnosis of syphilis could have been made in close proximity to their residential places, instead of the place for risky sexual behaviour. Our data only reflects the location of residence, but not the location for sex. Therefore, while interventions targeting cluster areas are needed, non-cluster areas (accounting for 89% of P/S cases), especially places with more commercial sex activities, deserve more attentions⁶. In addition, recurring crackdowns against FSW in some cities may influence transmission. For example, a large-scale three-month sex work crackdown was initiated in Dongguan city (City K) and other locations in February 2014³⁵. Given that we did not have complete data on the scope of these activities, we could not incorporate them into our analysis. In HIV epidemiology, non-locally acquired infection plays an important role^{36,37}. The case-reporting system should include suspected place of infection, such that a crude estimation on the proportion of non-locally acquired infection could be made. Community-based syphilis epidemiological study could fill the gap and provide useful reference for strategic epidemic control planning.

We acknowledged several limitations. First, reported early latent syphilis cases, who were also infectious to others, were not included. The Chinese syphilis case reporting system combines early latent and late latent cases. As early latent syphilis epidemiology is important in understanding syphilis transmission thoroughly, it is recommended to classify latent syphilis cases into early latent and late latent stages in the case reporting system. One possible classification approach is to make full use of syphilis titer data, which could be an indicator for defining active syphilis infection³⁸. Of note, only primary and secondary syphilis cases were included in analysis, and the clustering pattern could be different from the overall syphilis epidemic. Second, the study duration was 1.5 years, which was too short for sophisticated temporal analysis. Data in the latest years were selected due to significant improvement in correct syphilis staging reported by the doctors in the province^{27,39}. Misclassification of syphilis stages could not be ruled out, especially in places without sufficient training for making syphilis diagnosis and case reporting. In the national syphilis control plan 2010–2020, training and examination of healthcare providers have been put in the agenda for mitigating the problem⁴⁰. Third, the reporting system is not able to differentiate FSW from non-FSW, and male client of FSW from male non-clients. As they are normally the core groups disproportionately involved in syphilis transmission networks, missing of such information limits the understanding of syphilis transmission dynamics. Lastly, we acknowledged high syphilis prevalence among men who have sex with men (MSM) in China⁴¹. Unfortunately, there was a high proportion of missing data in the relevant field for distinguishing MSM from non-MSM. Further investigation was limited in the study period.

Nonetheless, findings in this study could enhance the understanding of spatiotemporal distribution of syphilis epidemic. The identified clusters of P/S cases in Guangdong Province could be the starting points for subsequent local investigations and planning of location-based interventions. Spatiotemporal cluster detection by multiple approaches could cross-validate the results with each other, and give valuable additional epidemiological information, on top of the current surveillance system. As cases of higher age and living in rural areas were more likely to be in clusters, sexual health education and condom usage promotion should be expanded to cover these populations. In addition, interventions for partner notification, contact tracing and syphilis testing should be scaled-up in STD clinics and VCT sites or CBOs, where cases were more likely to visit for syphilis testing. The service catchment of these healthcare services should be expanded to improve accessibility and enhance testing. In areas with frequent misclassification of syphilis staging, more training should be provided to the doctors for accurate documentation of patients' conditions and making valid epidemiological inference.

To conclude, P/S notification rates clustered but scattered in eight out of 21 cities in Guangdong Province. Individuals of older age, living in rural area and undergoing syphilis test in STD clinics, VCT sites or CBOs were more likely to be in clusters, suggesting their involvement in the possible transmission network. Our study findings and spatiotemporal analysis approach may be useful for designing tailored syphilis control program.

References

1. Yang, S. *et al.* Epidemiological features of and changes in incidence of infectious diseases in China in the first decade after the SARS outbreak: an observational trend study. *Lancet Infect Dis* **17**, 716–725, [https://doi.org/10.1016/S1473-3099\(17\)30227-X](https://doi.org/10.1016/S1473-3099(17)30227-X) (2017).
2. Simms, I. *et al.* Recent outbreaks of infectious syphilis, United Kingdom, January 2012 to April 2014. *Euro Surveill* **19** (2014).
3. Centers for Disease Control and Prevention. Reported cases of STDs on the rise in the U.S (2015).
4. Yin, F., Feng, Z. & Li, X. Spatial analysis of primary and secondary syphilis incidence in China, 2004–2010. *Int J STD AIDS* **23**, 870–875, <https://doi.org/10.1258/ijisa.2012.011460> (2012).
5. Wu, X. *et al.* Multilevel and spatial analysis of syphilis in Shenzhen, China, to inform spatially targeted control measures. *Sex Transm Infect* **88**, 325–329, <https://doi.org/10.1136/sextrans-2011-050397> (2012).
6. Gesink, D. *et al.* Spatial epidemiology of the syphilis epidemic in Toronto, Canada. *Sex Transm Dis* **41**, 637–648, <https://doi.org/10.1097/olq.0000000000000196> (2014).
7. Escamilla, V. *et al.* Influence of Detection Method and Study Area Scale on Syphilis Cluster Identification in North Carolina. *Sex Transm Dis* **43**, 216–221, <https://doi.org/10.1097/OLQ.0000000000000421> (2016).
8. van Aar, F. *et al.* Outbreaks of syphilis among men who have sex with men attending STI clinics between 2007 and 2015 in the Netherlands: a space-time clustering study. *Sex Transm Infect* **93**, 390–395, <https://doi.org/10.1136/sextrans-2016-052754> (2017).
9. Garnett, G. P., Aral, S. O., Hoyle, D. V., Cates, W. Jr. & Anderson, R. M. The natural history of syphilis. Implications for the transmission dynamics and control of infection. *Sex Transm Dis* **24**, 185–200 (1997).
10. Yang, L.-G. *et al.* Primary syphilis cases in Guangdong Province 1995–2008: opportunities for linking syphilis control and regional development. *BMC public health* **10**, 793, <https://doi.org/10.1186/1471-2458-10-793> (2010).
11. National Center for STD Control, C. C. [Summary report for STD epidemics] (2013).
12. Wang, C., Yang, L., Yang, B. & Chen, S. Prevalence of syphilis and gonorrhea in Guangdong province, 1995 to 2010. *Chin J Public Health* **29**, 423–425 (2013).
13. Statistical Bureau of Guangdong Province; Survey Office of the National Bureau of Statistics in Guangdong. *Guangdong Statistical Yearbook*, <http://www.gdstats.gov.cn/tjnj/2014/directory.html> (2014).
14. National Center for AIDS/STD Control and Prevention China CDC. [China syphilis control plan (2010–2020) - interim assessment guideline] (2016).
15. Cleveland, R., Cleveland, W., Mcrae, J. & Terpenning, I. STL: a seasonal-trend decomposition procedure based on Loess. *J Official Statistics* **6**, 3–73 (1990).
16. Goodchild, M. First law of geography. 179–182 (2009).
17. Anselin, L. Local indicators of spatial association -LISA. *Geogr Anal* **27**, 93–115 (1995).
18. Lee, S. S. & Wong, N. S. The clustering and transmission dynamics of pandemic influenza A (H1N1) 2009 cases in Hong Kong. *J Infect* **63**, 274–280, <https://doi.org/10.1016/j.jinf.2011.03.011> (2011).
19. Kulldorff, M. *SaTScan(TM) user guide for version 9*, 4 (2015).
20. Wong, N. *et al.* Spatiotemporal clusters of primary and secondary syphilis cases in South China: an observational study. *The Lancet* **388**, S90 (2016).
21. Pearlman, R. V. *et al.* Sexually transmitted infections among individuals over fifty years of age in China. *AIDS Patient Care STDS* **24**, 345–347, <https://doi.org/10.1089/apc.2009.0323> (2010).
22. Wong, S. P. *et al.* Risk of syphilis in STI clinic patients: a cross-sectional study of 11,500 cases in Guangxi, China. *Sex Transm Infect* **83**, 351–356, <https://doi.org/10.1136/sti.2007.025015> (2007).
23. Chen, Y. *et al.* [Investigation on the risk factors for HIV infection among elderly male clients of the commercial female sex-workers in Guangxi Zhuang Autonomous Region, in 2012]. *Zhonghua Liu Xing Bing Xue Za Zhi* **34**, 1086–1090 (2013).
24. Yang, Z., Su, J., Peng, X. & Wu, N. A decline in HIV and syphilis epidemics in Chinese female sex workers (2000–2011): a systematic review and meta-analysis. *PLoS One* **8**, e82451, <https://doi.org/10.1371/journal.pone.0082451> (2013).
25. McLaughlin, M. M. *et al.* Sexually transmitted infections among heterosexual male clients of female sex workers in China: a systematic review and meta-analysis. *PLoS One* **8**, e71394, <https://doi.org/10.1371/journal.pone.0071394> (2013).
26. Wang, Q., Yang, P., Gong, X., Jiang, J. & Yang, B. [Syphilis prevalence and high risk behaviors among female sex workers in different settings]. *Chinese Journal of AIDS & STD* **15**, 398–400 (2009).
27. Wong, N. S. *et al.* Stages of syphilis in South China - a multilevel analysis of early diagnosis. *BMC Public Health* **17**, 135, <https://doi.org/10.1186/s12889-016-4004-y> (2017).
28. Gesink, D. C., Sullivan, A. B., Norwood, T. A., Serre, M. L. & Miller, W. C. Does core area theory apply to sexually transmitted diseases in rural environments? *Sex Transm Dis* **40**, 32–40, <https://doi.org/10.1097/OLQ.0b013e3182762524> (2013).
29. Sun, W. & Lu, Z. Cross-sectional study on HIV/AIDS related high risk behaviors in low graded sex venues located in the junctions of urban and suburb areas. *Chinese Journal of AIDS & STD* **13**, 536–538 (2007).
30. Li, X. *et al.* Survey on HIV/STIs Prevalence and High Risk Behaviors Among Female Sex Workers in Different Settings. *Practical Preventive Medicine* **20**, 816–818 (2013).
31. Lu, S. & Liu, X. [Syphilis epidemiology in Meizhou, Guangdong province, 2001–2010]. *China Modern Medicine* **18**, 153–154 (2011).
32. Peterman, T. A. *et al.* High incidence of new sexually transmitted infections in the year following a sexually transmitted infection: a case for rescreening. *Annals of internal medicine* **145**, 564–572 (2006).
33. Gunn, R. A., Fitzgerald, S. & Aral, S. O. Sexually transmitted disease clinic clients at risk for subsequent gonorrhea and chlamydia infections: possible 'core' transmitters. *Sex Transm Dis* **27**, 343–349 (2000).
34. Wang, X., Zhang, Q., chen, B. & Fang, X. Sex criminal HIV/syphilis surveillance report in Dongguan, Guangdong province. *Disease Surveillance* **23**, 490–492 (2008).
35. Xing, S., Zhang, Y., Wu, Z. & Yin, C. In *The Beijing News* (2014).
36. Wong, N. S. *The incorporation of viral load measures at sub-population level for modelling the HIV epidemic in Hong Kong*. Doctor of Philosophy thesis, The Chinese University of Hong Kong (2015).
37. Department of Health, H. K. S. A. R. HIV surveillance report – 2014 update. (Hong Kong) (2014).
38. Black, V. *et al.* Field evaluation of Standard Diagnostics' Bioline HIV/Syphilis Duo test among female sex workers in Johannesburg, South Africa. *Sex Transm Infect*. <https://doi.org/10.1136/sextrans-2015-052474> (2016).
39. Lan, L. *et al.* [Analysis on accurate diagnosis and standardized treatment of reported syphilis cases in Shenzhen]. *Chin J AIDS STD* **21**, 619–622 (2015).
40. Tucker, J. D. & Cohen, M. S. China's syphilis epidemic: epidemiology, proximate determinants of spread, and control responses. *Curr Opin Infect Dis* **24**, 50–55, <https://doi.org/10.1097/QCO.0b013e3182834204bf> (2011).
41. Wu, Z. *et al.* HIV and syphilis prevalence among men who have sex with men: a cross-sectional survey of 61 cities in China. *Clin Infect Dis* **57**, 298–309, <https://doi.org/10.1093/cid/cit210> (2013).

Acknowledgements

We would like to thank Prof. Shui Shan Lee for the useful comments on the manuscript. NS was supported by Guangdong Provincial Center for Skin Diseases and STI Control and the South China-UNC STD Research Training Center grant (FIC1D43TW009532-01), SESH R01 (NIAID 1R01AI114310) and Fogarty International Center. Li Ka Shing Institute of Health Sciences at The Chinese University of Hong Kong is acknowledged for

providing technical support in conducting the research. This is an unfunded study. Part of the data has been presented as a poster in the Lancet-CAMS Health Summit, October 2016, Beijing, China: Wong NS, Huang S, Chen L, Zhao P, Tucker JD, Yang LG, Goh BT, Zheng H, Yang B. Spatiotemporal clusters of primary and secondary syphilis cases in South China: an observational study. *Lancet*. 2016 Oct;388 Suppl 1:S90.

Author Contributions

S.H. and N.S.W. motivated and designed the study. L.C. and P.Z. collected the data. N.S.W. analysed the data. L.C., P.Z., S.H., N.S.W. and C.M.P. interpreted the results. N.S.W. and S.H. wrote the article. S.H. and H.Z. oversaw the study process. J.D.T., C.M.P., B.T.G., L.Y., B.Y. and H.Z. critically reviewed the article. All the authors reviewed, edited and approved the article.

Additional Information

Supplementary information accompanies this paper at <https://doi.org/10.1038/s41598-018-27173-y>.

Competing Interests: The authors declare no competing interests.

Publisher's note: Springer Nature remains neutral with regard to jurisdictional claims in published maps and institutional affiliations.



Open Access This article is licensed under a Creative Commons Attribution 4.0 International License, which permits use, sharing, adaptation, distribution and reproduction in any medium or format, as long as you give appropriate credit to the original author(s) and the source, provide a link to the Creative Commons license, and indicate if changes were made. The images or other third party material in this article are included in the article's Creative Commons license, unless indicated otherwise in a credit line to the material. If material is not included in the article's Creative Commons license and your intended use is not permitted by statutory regulation or exceeds the permitted use, you will need to obtain permission directly from the copyright holder. To view a copy of this license, visit <http://creativecommons.org/licenses/by/4.0/>.

© The Author(s) 2018