



Article

Z/I1 Hybrid Virulence Plasmids Carrying Antimicrobial Resistance genes in *S. Typhimurium* from Australian Food Animal Production

Ethan R. Wyrsh ¹, Jane Hawkey ², Louise M. Judd ², Ruth Haites ³, Kathryn E. Holt ^{2,4}, Steven P. Djordjevic ^{1,*},[†] and Helen Billman-Jacobe ^{3,†} 

¹ The ithree Institute, University of Technology Sydney, Sydney, NSW 2007, Australia

² Department of Infectious Diseases, Central Clinical School, Monash University, Melbourne, VIC 3004, Australia

³ Asia Pacific Centre for Animal Health, Melbourne Veterinary School, Faculty of Veterinary and Agricultural Sciences, University of Melbourne, Parkville, VIC 3052, Australia

⁴ Faculty of Infectious and Tropical Diseases, Department of Infection Biology, London School of Hygiene & Tropical Medicine, London WC1E 7HT, UK

* Correspondence: steven.djordjevic@uts.edu.au

† Equal contribution.

Received: 11 July 2019; Accepted: 25 August 2019; Published: 29 August 2019



Abstract: Knowledge of mobile genetic elements that capture and disseminate antimicrobial resistance genes between diverse environments, particularly across human–animal boundaries, is key to understanding the role anthropogenic activities have in the evolution of antimicrobial resistance. Plasmids that circulate within the *Enterobacteriaceae* and the Proteobacteria more broadly are well placed to acquire resistance genes sourced from separate niche environments and provide a platform for smaller mobile elements such as IS26 to assemble these genes into large, complex genomic structures. Here, we characterised two atypical Z/I1 hybrid plasmids, pSTM32-108 and pSTM37-118, hosting antimicrobial resistance and virulence associated genes within endemic pathogen *Salmonella enterica* serovar Typhimurium 1,4,[5],12:i:-, sourced from Australian swine production facilities during 2013. We showed that the plasmids found in *S. Typhimurium* 1,4,[5],12:i:- are close relatives of two plasmids identified from *Escherichia coli* of human and bovine origin in Australia circa 1998. The older plasmids, pO26-CRL₁₂₅ and pO111-CRL₁₁₅, encoded a putative serine protease autotransporter and were host to a complex resistance region composed of a hybrid Tn21-Tn1721 mercury resistance transposon and composite IS26 transposon Tn6026. This gave a broad antimicrobial resistance profile keyed towards first generation antimicrobials used in Australian agriculture but also included a class 1 integron hosting the trimethoprim resistance gene *dfmA5*. Genes encoding resistance to ampicillin, trimethoprim, sulphonamides, streptomycin, aminoglycosides, tetracyclines and mercury were a feature of these plasmids. Phylogenetic analyses showed very little genetic drift in the sequences of these plasmids over the past 15 years; however, some alterations within the complex resistance regions present on each plasmid have led to the loss of various resistance genes, presumably as a result of the activity of IS26. These alterations may reflect the specific selective pressures placed on the host strains over time. Our studies suggest that these plasmids and variants of them are endemic in Australian food production systems.

Keywords: *Salmonella*; plasmid; antibiotic resistance; AMR; agriculture

1. Introduction

Members of the *Enterobacteriaceae* are important nosocomial and veterinary pathogens capable of causing both intestinal [1] and extraintestinal [2] infections and are often zoonotic [3]. Their universal presence in the gastrointestinal tracts of vertebrates, particularly humans, food animals and avian species, exposes them to diverse antimicrobial selection pressures. Sound antimicrobial stewardship is an important strategy needed to curtail the evolution and spread of multiple-drug-resistant (MDR) pathogens, particularly to prevent or restrict use of clinically important antibiotics in food production systems [4]. Whole genome sequencing and PCR-based studies of commensal and pathogenic *Escherichia coli* and *Salmonella* sourced from intensive livestock production systems in Australia show infrequent and sporadic carriage of genes encoding resistance to antibiotics of critical importance in human medicine [5–11] and attest to the effectiveness of antimicrobial stewardship practices in Australian food production systems. However, plasmid sequences derived from Australian *E. coli* and *Salmonella* from healthy humans [12] and food animals [13–15] show widespread carriage of genes encoding resistance to first generation antimicrobial agents and heavy metals. Carriage of plasmids carrying genes encoding resistance to clinically important antimicrobials is likely to be circulating widely in companion animals and horses [4,16,17], but further studies are needed to address this hypothesis.

In Australia, IS26 has played a major role in altering the structure of class 1 integrons [7,9] and the capture and assembly of antimicrobial resistance (AMR) genes on plasmids [8,12,18], chromosomes [19] and transposons [8]. In a previous study, we inferred from sequence data that IS26 had introduced AMR genes into the backbones of mercury resistance transposons that are mobilised by I1 (pO26-CRL₁₁₁) and related Z (pO26-CRL₁₂₅) plasmids that co-resided in enterohaemorrhagic (EHEC) O26 strain 06877 from a haemorrhagic colitis patient in Victoria, Australia in 1998 [14]. We also described how Z plasmid pO26-CRL₁₂₅ shared a high sequence identity with Z plasmid pO111-CRL₁₁₅ from bovine strain D275, an atypical enteropathogenic (aEPEC) O111 isolate also from the late 1990s [15]. All three plasmids appeared to have acquired identical Tn21 derivative transposons carrying Tn6026. Tn6026 is an IS26-mobilised transposon encoding *bla*_{TEM-1} (ampicillin resistance), *sul2* (sulphonamide resistance), *strAB* (streptomycin resistance) and *aphA1* (neomycin/kanamycin resistance) [8]. pO26-CRL₁₂₅ and pO111-CRL₁₁₅ are near-identical mosaic plasmids, carrying a Z replicon, and comprise conjugal transfer and stability genes that show high sequence identity with I1 plasmids like pO113 (GenBank AY258503). These plasmids are also host to a virulence-associated locus encoding a putative serine protease autotransporter (SPATE), and a complex resistance locus (CRL—here used as a general description for clustered resistance genes and mobilising genetic elements) [15] formed by a Tn21 mercury resistance transposon, hosting a Tn402 derivative clinical class 1 integron with a *dfra5* gene cassette (trimethoprim resistance), interrupted by Tn6026. A truncated Tn1721 module encoding *tetAR* (tetracycline resistance) was at the terminus of the structure, identical to Tn1721 modules found in P-1-beta plasmid pB10 (GenBank NC_004840) and N plasmid pRSB201 (GenBank JN102341). The truncated Tn1721 module was separated from the derivative Tn21 transposon by a region identical to the *oriV* of the P-1 α plasmid pBS228 [15]. The Tn6026 insertion presumably modified the class 1 integron 3'-conserved segment (3'-CS), which comprises only 24 bp. This deletion signature is often, but not exclusively, associated with the insertion of Tn6026 or related transposon Tn6029 in MDR *E. coli* from the faeces of Australian agricultural animals [7,9,20].

Salmonella enterica subspecies *enterica* serovar Typhimurium (*S. Typhimurium*) is a globally distributed serovar implicated in nontyphoidal human and animal salmonellosis, and the dominant serovar causing foodborne human infections in Australia [21]. Recently, a monophasic variant of *S. Typhimurium* with the serotype 1,4,[5],12:i:- and Phage Type (PT) 193 was identified in Australian swine [22]. The increase in frequency of *S. 1,4,[5],12:i:- PT193* in Australia mirrors the dominance displayed by other monophasic variants of *S. Typhimurium* with the same serotype in Europe, where swine are also a major reservoir [23,24], as well as Asia, Latin America and the USA [25].

Five independent and geographically separate farrow-to-finish swine production operations in Australia were recently shown to be a source of *S.* 1,4,[5],12:i:- PT193. Pigs in four of these facilities showed substantial shedding patterns indicative of a high hazard load in market weight animals [22]. Multiple locus variable number tandem repeat analysis (MLVA) suggested that each of five farms carrying *S.* 1,4,[5],12:i:- PT193 carried an endemic strain or closely related strains represented by 12 closely-related MLVA profiles. Furthermore, MLVA patterns of *S.* 1,4,[5],12:i:- PT193 sourced from human and nonporcine origins collected during Australian surveillance suggest a highly related population may be circulating in Australia.

Here, we describe the complete sequences of two plasmids from *S.* 1,4,[5],12:i:- sourced from commercial swine production facilities in 2013. The plasmids, pSTM32-108 and pSTM37-118, are near identical to IncZ plasmids pO26-CRL₁₂₅ from human strain 06877 and pO111-CRL₁₁₅ from bovine strain D275 (1998) that are described above. We characterised the evolutionary changes these plasmids have undergone, many of which are localised to the CRLs.

2. Methods and Materials

2.1. Strains

Plasmids pSTM32-108 and pSTM37-118 were sourced from *S.* Typhimurium strains TW-Stm32 and TW-Stm37, respectively. Strain collection methods and typing as *S.* 1,4,[5],12:i:- PT193 have been reported [22]. Briefly, the strains were acquired from the same Australian commercial herd of weaner pigs, sampled at different times during 2013. Sampling was performed by aggregating portions of undisturbed faecal pats taken from the pen floor, followed by the isolation of *Salmonella* [26] from the aggregate samples. TW-Stm37 displayed resistance to tetracycline and trimethoprim, whilst TW-Stm32 displayed resistance to tetracycline, trimethoprim and ampicillin.

2.2. DNA Extraction, Sequencing and Genome Assembly

Strains TW-Stm32 and TW-Stm37 were cultured in LB broth at 37 °C for DNA extraction. Genomic DNA from pure isolates was extracted using the JANUS Chemagic automated workstation (PerkinElmer®, Massachusetts, United States) with the Chemagic Viral DNA/RNA kit (PerkinElmer®, Massachusetts, United States). Unique dual indexed libraries were prepared using the Nextera XT DNA sample preparation kit (Illumina®, San Diego, United States). Libraries were sequenced on the Illumina NextSeq® (Illumina®, San Diego, United States) 500 with 150-cycle paired end chemistry as described by the manufacturer's protocols.

Long read sequencing was performed using the Oxford Nanopore Technologies (ONT) MinION Nanopore (Oxford Nanopore Technologies®, Oxford, United Kingdom) using LSK-108, EXP NBD-113 chemistry and sequenced on an R9.5 flow cell. For Illumina, average chromosomal read depth was 64x and 60x for TW-Stm32 and TW-Stm37, respectively, with an average read length of 151 bp. For ONT, the N50 read length was 7690 bp and 13,957 bp for TW-Stm32 and TW-Stm37, respectively. Reads were filtered using Filtlong (<https://github.com/rrwick/Filtlong>) to keep only the best reads up to a target of 500,000 bp, and to remove any reads shorter than 1000 bp.

Illumina and filtered ONT reads were combined to generate hybrid whole genome assemblies using Unicycler v0.4.1 [27] with default parameters. Both plasmids were complete and circularised and extracted from the resulting assembly graph.

Sequences have been deposited in GenBank under the accession numbers MN334219 and MN334220.

Gene annotation was performed using NCBI BLASTn server and reference plasmids pO26-CRL₁₂₅ (KC340960.1) and pO111-CRL₁₁₅ (KC340959.1). Annotations were managed with SnapGene. Contextual sequence comparisons were generated with progressiveMauve [28]. Plasmid replicon typing was confirmed using PlasmidFinder [29]. Plasmid MLST was performed using the service provided by the Centre for Genomic Epidemiology (CGE) [29]. Detection and comparison of single nucleotide polymorphisms was performed with Parsnp v1.1 [30], utilising the PhiPack recombination filter.

Parsnp selects a conserved core based on homology between all input sequences. Insertion sequences were identified with ISfinder [31]. Figures were generated using SnapGene and BRIG [32].

3. Results

Despite being isolated approximately 15 years apart, pSTM32-108 (108,065 bp) and pSTM37-118 (118,115 bp) are near identical to Z plasmids pO26-CRL₁₂₅ and pO111-CRL₁₁₅ (Figure 1). Plasmids pSTM32-108 and pSTM37-118 carry *repZY* from Z plasmids, detectable by PlasmidFinder as a B/O/K/Z plasmid at 95% identity. Plasmid MLST utilising the I1 pMLST scheme [33] identifies only the *ardA*₂ allele as part of the I1 plasmid backbone present on each plasmid.

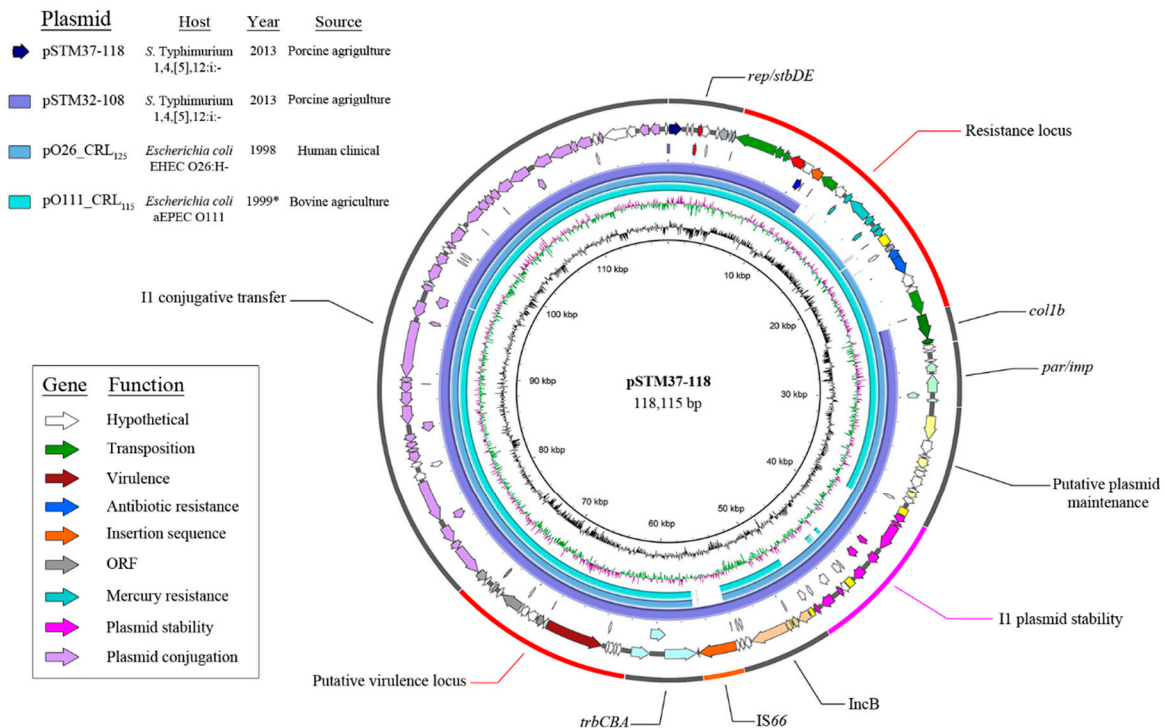


Figure 1. Map of IncZ/IncI derivative plasmid pSTM37-118 alongside BLASTn alignments of related plasmids. Annotated map of pSTM37-118 and a table of details describing plasmids included in the analysis. Colour-coded BLASTn alignments of pSTM32-108, pO26-CRL₁₂₅ and pO111-CRL₁₁₅ are shown in the inner circles. Inner graphs show GC skew (purple/green) and GC content (black) of pSTM37-118. Regions of the plasmid are labelled on the outer circle.

Using pO26-CRL₁₂₅ as reference, core polymorphism analysis performed with Parsnp identified only one variant site in the conserved backbone of pO26-CRL₁₂₅, while a separate single variation was also detected in pO111-CRL₁₁₅ (Figure 2). One unique site was also shared between pSTM32-108 and pSTM37-118, suggesting neither of the earlier plasmids was the direct originator of pSTM32-108 and pSTM37-118, but that they all share a common ancestor. The SNPs identified were in noncoding sequence of the *par/imp* region in pO111-CRL₁₁₅, in a DNA modification methylase within pO26-CRL₁₂₅, and in a putative transcriptional regulator within the virulence locus of pSTM32-108 and pSTM37-118. The core sequence selected by Parsnp covered between 73% (pO26-CRL₁₂₅) and 85% (pSTM32-108) of each plasmid sequence, including homologous regions of the resistance structure (Figure 2).

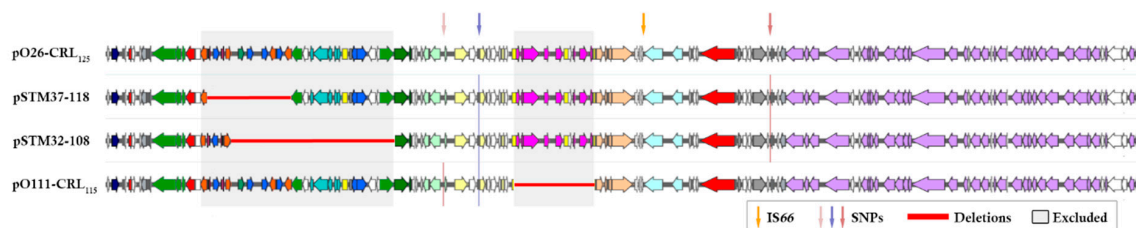


Figure 2. Schematic alignment of plasmids. Comparisons of plasmid annotation schematics, based on pO26-CRL₁₂₅ of highlighted regions, were excluded from the SNP analysis based on a lack of homology. Arrows indicate SNP variant sites and the IS66 family insertion site, and red bars indicate sequence lost from the individual plasmids.

Sequence comparisons show that modifications to the later plasmids were largely due to the activity of mobile genetic elements. Plasmids pSTM32-108 and pSTM37-118 acquired an IS66 family element (most similar to IS*Cro1*), indicative of an insertion into a common ancestor plasmid. The IS66 family element is flanked by 8 bp direct repeats (GTTTGT) and situated between the B plasmid region and the *trbCBA* operon (Figure 1), interrupting a hypothetical coding sequence (CDS) with putative conjugative function. The I-associated module encoding proteins with putative roles in plasmid partitioning and segregation in pO26-CRL₁₂₅ are also present in pSTM32-108 and pSTM37-118. Venturini et al. (2013) [15] identified recombination signatures both bordering and within this module, with one copy of this signature present at the recombination site in pO111-CRL₁₂₅. Identical signatures were observed in pSTM32-108 and pSTM37-118. Plasmid pO26-CRL₁₂₅ was also missing 135 bp of *traH*, which pSTM32-108 and pSTM37-118 retained. This portion of *traH* was excluded from SNP analysis (data not shown), as pO26-CRL₁₂₅ was the reference sequence for data presented.

While pSTM32-108 and pSTM37-118 are host to the same derivative Tn21 transposon characterised in earlier studies [14,15], insertion and deletion events seemingly mediated by IS26 have led to changes in the CRL in each plasmid (Figure 3). Initially, a precursor plasmid to pSTM32-108 and pSTM37-118 likely had an IS26 insertion downstream from the *dfrA5* cassette, 709 bp past *intI1*, with 5 bases now separating the end of the cassette and the terminal inverted repeat of IS26, disrupting the cassette *attC* signature. In pSTM37-118, the *tniA* CDS of Tn21 directly follows the IS26 element at this new locus, giving a structure with the entire 3'-CS and Tn6026 lost (Figure 3). This effectively removes *bla*_{TEM}, *strAB*, *sul2* and *aphA* from the plasmid resistance profile, leaving the plasmid with only resistance to trimethoprim (*dfrA5*), tetracycline (*tetAR*) and mercury (*mer*).

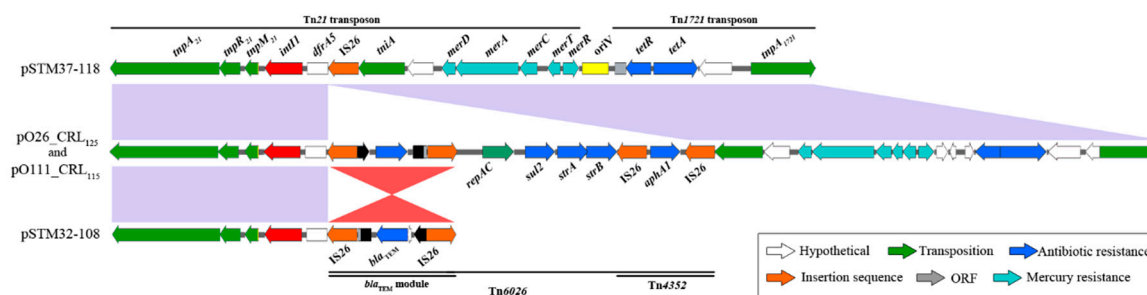


Figure 3. Comparison of resistance-encoding structures formed from Tn21 and Tn1721. Resistance structures present in the four plasmids, demonstrating a loss of sequence in pSTM37-118 and pSTM32-108. Homologous regions between structures are represented in purple and red, with red indicating the IS26-mediated inversion of sequence.

In pSTM32-108, the IS26 near *dfrA5* flanks the Tn6026 *bla*_{TEM} module, now inverted compared to pO26-CRL₁₂₅. Conserved plasmid sequence then follows the *bla*_{TEM} module; however, 327 bp of this sequence has also been lost, assumedly during these alterations. With this, the majority of sequence from Tn6026, Tn21/*mer* and Tn1721 has been lost. This leaves pSTM32-108 encoding only *dfrA5* and

*bla*_{TEM}. The loss of these transposable units led to the structures observed; however, this loss also removed the genetic signatures necessary to determine the precise evolutionary path of these diverged resistance structures. Nonetheless, a plausible evolutionary path using two key IS26 insertions is outlined in Figure 4. Depicted are two intermediate IS26 insertion events. The first is common to both later structures, an insertion event moving the IS26 border nineteen bases closer toward *int11*. The loss of *Tn6026* would then lead to the structure in pSTM37-118. Second is an IS26 insertion into the plasmid backbone, past *tnpA*₁₇₂₁, leading to the eventual formation of the structure in pSTM32-108.

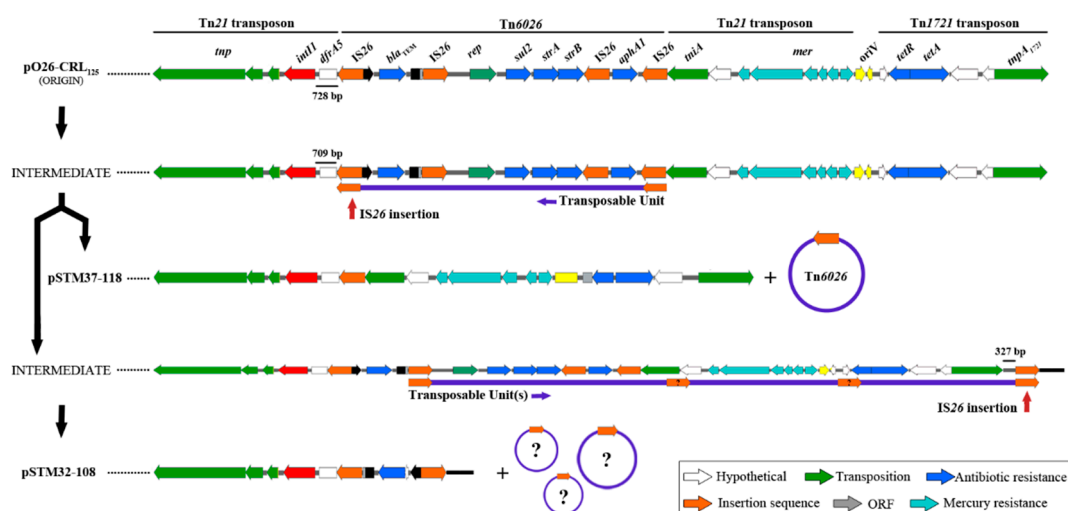


Figure 4. Key IS26 insertions in the potential evolutionary path of the complex resistance structures. Pathway diagram of the transition from the structure sourced in from 1998 [15] (“Origin”) to those present in plasmids isolated from *S. Typhimurium* in 2013. Close under the transitional structures are the potential transposable units (of unknown size and number) which are lost to generate each final complex resistance locus (CRL).

4. Discussion

The swine herd from which *S. Typhimurium* strains TW-Stm32 and TW-Stm37 were sourced was one of five sampled in the study by Weaver et al. (2017) [22]. Isolates recovered from the herd in 2013 displayed a combination of resistances to tetracycline, trimethoprim, ampicillin, streptomycin and sulphonamides. Strain TW-Stm37 specifically displayed resistance to tetracycline and trimethoprim, and TW-Stm32 displayed resistance to tetracycline, trimethoprim and ampicillin. These profiles are reflected by the gene content identified in plasmids described here, aside from the tetracycline resistance observed in TW-Stm32, hosted chromosomally.

Genetic elements such as IS26 have been linked with the formation of atypical and complex class 1 integron structures [7,20,34], independently mobile compound transposons [8,15] and complex resistance gene loci (CRLs) [12,14,15,18,19,35]. We hypothesised that the continued use of first-generation antimicrobials in farm animal production systems shapes the genetic structures of plasmids and chromosomal islands carried by commensal and pathogen populations of *Enterobacteriaceae* such that they not only acquire resistance to these antimicrobials but display an enhanced ability to acquire further resistance with a reduced fitness cost imposed on the host. The insertion sequence IS26 is significant in this regard because of its propensity to: (i) mobilise resistance genes belonging to most classes of antibiotics [36,37]; (ii) generate random deletions next to their site of insertion [7,9,38,39]; (iii) shuffle gene content [19,35]; (iv) create hybrid plasmids encoding combinations of virulence and resistance genes [14,15,18,40]; (v) create independently mobile, IS26-flanked transposons [8,14,37,41] which influence antibiotic resistance gene carriage in chromosomal islands [19,35]; and (vi) remove genes that negatively influence fitness [42].

With the activity of insertion sequences being the major differentiating factors between such closely related plasmids as the four discussed here, tracing them using molecular diagnostic tools requires the identification of unique DNA signatures. One potential example observed here is the insertion which brought IS26 in closer proximity to *intI1*. IS26 can also act as a border for the site-specific insertion and removal of other genes mobilised by IS26 and is one reason the epidemiological analysis of these elements is crucial to tracing AMR evolution. While IS26 activity led to the loss of various resistances here, its actions can lead to the stable acquisition of future DNA just as readily. Detailed information on specific insertion sites will assist in untangling the developmental path of any future isolations.

An interesting factor in the development of both *S. Typhimurium* plasmids here is the loss of sulphonamide resistance. Sulphonamide drugs are amongst the earliest antibiotics used to treat infection, and consequently, the resistance genes *sul1*, *sul2* and *sul3* have been consistently observed in association with class 1 integrons and the spread of AMR [43–46]. The loss of *sul* genes here suggests that pSTM37-118 and pSTM32-108 have potentially developed niche-specific resistance profiles, although previous survey data have shown sulphonamides to be used widely in Australian porcine agriculture in general [47], so this may simply be an artefact of the two samples available.

Plasmids like those described here are a primary route for the dissemination of virulence and AMR mechanisms amongst commensal and pathogenic *Enterobacteriaceae*. The alteration and consolidation of resistance gene cargo within transferrable resistance loci, often associated with the class 1 integrase, leads to diverse, complex resistance gene structures. The challenge in Australia is to monitor how these plasmids move between food animal production systems, humans, the environment and agriculture more broadly. These examples add to a growing number of reports of MDR plasmid sharing between *E. coli*, *Salmonella enterica* and other members of the *Enterobacteriaceae* [48–51]. Genomic surveillance efforts are in their infancy in Australia, and it is likely that many more instances of plasmid sharing within the *Enterobacteriaceae* and perhaps other bacterial genera will become evident as surveillance becomes routine and metagenomic methodologies become more sophisticated [52,53]. At present, the Z/I1 hybrid plasmids described here are limited to these isolations from Australian *Enterobacteriaceae*, and any inferences we make may only be pertinent to these specific examples; however, it is likely variants of these plasmids are widely disseminated given the length of time since they were isolated both here, and from cattle and human sources [14,15]. A routine genomic epidemiological surveillance strategy is needed globally to determine the identities of plasmids and the genetic cargo they carry and understand their mobility and the contribution they make to the spread AMR and pathogen evolution.

Author Contributions: E.R.W. performed genomic analyses and drafted the manuscript. R.H. isolated and cultured the bacteria. L.M.J. performed the genome sequencing, and J.H. performed the genome assembly. K.E.H., S.P.D. and H.B.-J. provided supervision and, along with E.R.W. and J.H., completed the final manuscript. H.B.-J. and S.P.D. conceived the study. All authors approved the manuscript before submission.

Funding: This work was partly funded by the Australian Research Council, linkage grants LP150100912 and LE150100031. This project was supported by the Australian Centre for Genomic Epidemiological Microbiology (AusGEM), a collaborative research partnership between the NSW Department of Primary Industries and the University of Technology Sydney. These results are helping to inform the OUTBREAK decision support system funded by the Medical Research Future Fund Frontier Health and Medical Research grant stage one.

Conflicts of Interest: The authors declare no conflict of interest.

References

1. Bannas, P.; Fraedrich, K.; Treszl, A.; Bley, T.A.; Herrmann, J.; Habermann, C.R.; Derlin, T.; Henes, F.O.; Wenzel, U.; Adam, G.; et al. Shiga Toxin-Producing *E. Coli* O104:H4 Outbreak 2011 in Germany: Radiological Features of Enterohemorrhagic Colitis. *Rofo* **2013**, *185*, 434–439. [[CrossRef](#)] [[PubMed](#)]
2. Pitout, J.D. Extraintestinal Pathogenic *Escherichia coli*: A Combination of Virulence with Antibiotic Resistance. *Front. Microbiol.* **2012**, *3*, 9. [[CrossRef](#)] [[PubMed](#)]
3. Pierard, D.; De Greve, H.; Haesebrouck, F.; Mainil, J. O157:H7 and O104:H4 Vero/Shiga toxin-producing *Escherichia coli* outbreaks: Respective role of cattle and humans. *Vet. Res.* **2012**, *43*, 13. [[CrossRef](#)] [[PubMed](#)]

4. Hardefeldt, L.; Gilkerson, J.; Billman-Jacobe, H.; Stevenson, M.; Thursky, K.; Browning, G.; Bailey, K. Antimicrobial labelling in Australia: a threat to antimicrobial stewardship? *Aust. Vet. J.* **2018**, *96*, 151–154. [[CrossRef](#)] [[PubMed](#)]
5. Bettelheim, K.A.; Hornitzky, M.A.; Djordjevic, S.P.; Kuzevski, A. Antibiotic resistance among verocytotoxigenic *Escherichia coli* (VTEC) and non-VTEC isolated from domestic animals and humans. *J. Med. Microbiol.* **2003**, *52*, 155–162. [[CrossRef](#)] [[PubMed](#)]
6. Abraham, S.; Jordan, D.; Wong, H.S.; Johnson, J.R.; Toleman, M.A.; Wakeham, D.L.; Gordon, D.M.; Turnidge, J.D.; Mollinger, J.L.; Gibson, J.S.; et al. First detection of extended-spectrum cephalosporin- and fluoroquinolone-resistant *Escherichia coli* in Australian food-producing animals. *J. Glob. Antimicrob. Resist.* **2015**, *3*, 273–277. [[CrossRef](#)] [[PubMed](#)]
7. Reid, C.J.; Wyrsh, E.R.; Roy Chowdhury, P.; Zingali, T.; Liu, M.; Darling, A.E.; Chapman, T.A.; Djordjevic, S.P. Porcine commensal *Escherichia coli*: A reservoir for class 1 integrons associated with IS26. *Microb. Genom.* **2017**, *3*, e000143. [[CrossRef](#)]
8. Cain, A.K.; Liu, X.; Djordjevic, S.P.; Hall, R.M. Transposons related to Tn1696 in IncHI2 plasmids in multiply antibiotic resistant *Salmonella enterica* serovar Typhimurium from Australian animals. *Microb. Drug Resist.* **2010**, *16*, 197–202. [[CrossRef](#)]
9. Dawes, F.E.; Kuzevski, A.; Bettelheim, K.A.; Hornitzky, M.A.; Djordjevic, S.P.; Walker, M.J. Distribution of class 1 integrons with IS26-mediated deletions in their 3'-conserved segments in *Escherichia coli* of human and animal origin. *PLoS ONE* **2010**, *5*, e12754. [[CrossRef](#)]
10. Abraham, S.; Kirkwood, R.N.; Laird, T.; Saputra, S.; Mitchell, T.; Singh, M.; Linn, B.; Abraham, R.J.; Pang, S.; Gordon, D.M.; et al. Dissemination and persistence of extended-spectrum cephalosporin-resistance encoding IncI1-blaCTXM-1 plasmid among *Escherichia coli* in pigs. *The ISME J.* **2018**, *12*, 2352–2362. [[CrossRef](#)]
11. Billman-Jacobe, H.; Liu, Y.; Haites, R.; Weaver, T.; Robinson, L.; Marena, M.; Dyll-Smith, M. pSTM6-275, a conjugative IncHI2 plasmid of *Salmonella* that confers antibiotic and heavy metal resistance under changing physiological conditions. *Antimicrob Agents Chemother.* **2018**, *62*, e02357-17. [[CrossRef](#)] [[PubMed](#)]
12. Moran, R.A.; Holt, K.E.; Hall, R.M. pCERC3 from a commensal ST95 *Escherichia coli*: A ColV virulence-multiresistance plasmid carrying a sul3-associated class 1 integron. *Plasmid* **2016**, *84*, 11–19. [[CrossRef](#)]
13. Dyll-Smith, M.L.; Liu, Y.; Billman-Jacobe, H. Genome Sequence of an Australian Monophasic *Salmonella enterica* subsp. *enterica* Typhimurium Isolate (TW-Stm6) Carrying a Large Plasmid with Multiple Antimicrobial Resistance Genes. *Genome Announc.* **2017**, *5*, e00793-17. [[CrossRef](#)] [[PubMed](#)]
14. Venturini, C.; Beatson, S.A.; Djordjevic, S.P.; Walker, M.J. Multiple antibiotic resistance gene recruitment onto the enterohemorrhagic *Escherichia coli* virulence plasmid. *FASEB J.* **2010**, *24*, 1160–1166. [[CrossRef](#)]
15. Venturini, C.; Hassan, K.A.; Roy Chowdhury, P.; Paulsen, I.T.; Walker, M.J.; Djordjevic, S.P. Sequences of Two Related Multiple Antibiotic Resistance Virulence Plasmids Sharing a Unique IS26-Related Molecular Signature Isolated from Different *Escherichia coli* Pathotypes from Different Hosts. *PLoS ONE* **2013**, *8*, e78862. [[CrossRef](#)] [[PubMed](#)]
16. Abraham, S.; Trott, D.J.; Jordan, D.; Gordon, D.M.; Groves, M.D.; Fairbrother, J.M.; Smith, M.G.; Zhang, R.; Chapman, T.A. Phylogenetic and molecular insights into the evolution of multidrug-resistant porcine enterotoxigenic *Escherichia coli* in Australia. *Int. J. Antimicrob. Agents* **2014**, *44*, 105–111. [[CrossRef](#)] [[PubMed](#)]
17. Saputra, S.; Jordan, D.; Mitchell, T.; Wong, H.S.; Abraham, R.J.; Kidsley, A.; Turnidge, J.; Trott, D.J.; Abraham, S. Antimicrobial resistance in clinical *Escherichia coli* isolated from companion animals in Australia. *Vet. Microbiol.* **2017**, *211*, 43–50. [[CrossRef](#)] [[PubMed](#)]
18. McKinnon, J.; Roy Chowdhury, P.; Djordjevic, S.P. Genomic analysis of multidrug-resistant *Escherichia coli* ST58 causing urosepsis. *Int. J. Antimicrob. Agents* **2018**, *52*, 430–435. [[CrossRef](#)] [[PubMed](#)]
19. Roy Chowdhury, P.; McKinnon, J.M.; Liu, M.Y.; Djordjevic, S.P. Multidrug resistant uropathogenic *Escherichia coli* ST405 with a novel, composite IS26 transposon in a unique chromosomal location. *Front. Microbiol.* **2018**, *9*, 3212. [[CrossRef](#)] [[PubMed](#)]
20. Cummins, M.L.; Reid, C.J.; Roy Chowdhury, P.; Bushell, R.N.; Esbert, N.; Tivendale, K.A.; Noormohammadi, A.H.; Islam, S.; Marena, M.S.; Browning, G.F.; et al. Whole genome sequence analysis of Australian avian pathogenic *Escherichia coli* that carry the class 1 integrase gene. *Microb. Genom.* **2019**, *5*, e000250. [[CrossRef](#)] [[PubMed](#)]
21. OzFoodNet. OzFoodNet quarterly report, 1 January to 31 March 2015. *Commun. Dis. Intell. Q. Rep.* **2017**, *41*, E186–E193.

22. Weaver, T.; Valcanis, M.; Mercoulia, K.; Sait, M.; Tuke, J.; Kiermeier, A.; Hogg, G.; Pointon, A.; Hamilton, D.; Billman-Jacobe, H. Longitudinal study of *Salmonella* 1,4,[5],12:i:- shedding in five Australian pig herds. *Prev. Vet. Med.* **2017**, *136*, 19–28. [[CrossRef](#)] [[PubMed](#)]
23. Hauser, E.; Tietze, E.; Helmuth, R.; Junker, E.; Blank, K.; Prager, R.; Rabsch, W.; Appel, B.; Fruth, A.; Malorny, B. Pork Contaminated with *Salmonella enterica* Serovar 4,[5],12:i:-, an Emerging Health Risk for Humans. *Appl. Environ. Microbiol.* **2010**, *76*, 4601–4610. [[CrossRef](#)] [[PubMed](#)]
24. Hopkins, K.L.; Kirchner, M.; Guerra, B.; Granier, S.A.; Lucarelli, C.; Porrero, M.C.; Jakubczak, A.; Threlfall, E.J.; Mevius, D.J. Multiresistant *Salmonella enterica* serovar 4,[5],12:i:- in Europe: a new pandemic strain? *Eurosurveillance* **2010**, *15*, 19580. [[CrossRef](#)] [[PubMed](#)]
25. Switt, A.I.; Soyer, Y.; Warnick, L.D.; Wiedmann, M. Emergence, distribution, and molecular and phenotypic characteristics of *Salmonella enterica* serotype 4,5,12:i. *Foodborne Pathog. Dis.* **2009**, *6*, 407–415. [[CrossRef](#)] [[PubMed](#)]
26. Hamilton, D.; Holds, G.; Hogg, G.; Valcanis, M.; Kiermeier, A. Longitudinal study of an Australian pig farm infected with monophasic *Salmonella* Typhimurium-like PT193 (1, 4,[5], 12: i:-PT193) using MLVA. In Proceedings of the Fourth International Symposium on the Epidemiology and Control of Hazards in Pork Production Chain, Porto, Portugal, 7–10 September 2015; pp. 127–130.
27. Wick, R.R.; Judd, L.M.; Gorrie, C.L.; Holt, K.E. Unicycler: Resolving bacterial genome assemblies from short and long sequencing reads. *PLoS Comput. Biol.* **2017**, *13*, e1005595. [[CrossRef](#)] [[PubMed](#)]
28. Darling, A.E.; Mau, B.; Perna, N.T. progressiveMauve: Multiple genome alignment with gene gain, loss and rearrangement. *PLoS ONE* **2010**, *5*, e11147. [[CrossRef](#)] [[PubMed](#)]
29. Carattoli, A.; Zankari, E.; Garcia-Fernandez, A.; Voldby Larsen, M.; Lund, O.; Villa, L.; Moller Aarestrup, F.; Hasman, H. In silico detection and typing of plasmids using PlasmidFinder and plasmid multilocus sequence typing. *Antimicrob. Agents Chemother.* **2014**, *58*, 3895–3903. [[CrossRef](#)] [[PubMed](#)]
30. Treangen, T.J.; Ondov, B.D.; Koren, S.; Phillippy, A.M. The Harvest suite for rapid core-genome alignment and visualization of thousands of intraspecific microbial genomes. *Genome Biol* **2014**, *15*, 524. [[CrossRef](#)] [[PubMed](#)]
31. Siguier, P.; Perochon, J.; Lestrade, L.; Mahillon, J.; Chandler, M. ISfinder: the reference centre for bacterial insertion sequences. *Nucleic Acids Res.* **2006**, *34*, D32–D36. [[CrossRef](#)] [[PubMed](#)]
32. Alikhan, N.F.; Petty, N.K.; Ben Zakour, N.L.; Beatson, S.A. BLAST Ring Image Generator (BRIG): Simple prokaryote genome comparisons. *BMC Genom.* **2011**, *12*, 402. [[CrossRef](#)] [[PubMed](#)]
33. Garcia-Fernandez, A.; Chiaretto, G.; Bertini, A.; Villa, L.; Fortini, D.; Ricci, A.; Carattoli, A. Multilocus sequence typing of IncI1 plasmids carrying extended-spectrum beta-lactamases in *Escherichia coli* and *Salmonella* of human and animal origin. *J. Antimicrob. Chemother.* **2008**, *61*, 1229–1233. [[CrossRef](#)] [[PubMed](#)]
34. Reid, C.J.; Roy Chowdhury, P.; Djordjevic, S.P. Tn6026 and Tn6029 are found in complex resistance regions mobilised by diverse plasmids and chromosomal islands in multiple antibiotic resistant *Enterobacteriaceae*. *Plasmid* **2015**, *80*, 127–137. [[CrossRef](#)] [[PubMed](#)]
35. Roy Chowdhury, P.; Charles, I.G.; Djordjevic, S.P. A role for Tn6029 in the evolution of the complex antibiotic resistance gene loci in genomic island 3 in enteroaggregative hemorrhagic *Escherichia coli* O104:H4. *PLoS ONE* **2015**, *10*, e0115781. [[CrossRef](#)] [[PubMed](#)]
36. Dionisi, A.M.; Lucarelli, C.; Owczarek, S.; Luzzi, I.; Villa, L. Characterization of the plasmid-borne quinolone resistance gene qnrB19 in *Salmonella enterica* serovar Typhimurium. *Antimicrob. Agents Chemother.* **2009**, *53*, 4019–4021. [[CrossRef](#)] [[PubMed](#)]
37. Liakopoulos, A.; Mevius, D.; Ceccarelli, D. A Review of SHV Extended-Spectrum beta-Lactamases: Neglected Yet Ubiquitous. *Front Microbiol.* **2016**, *7*, 1374. [[CrossRef](#)] [[PubMed](#)]
38. Harmer, C.J.; Moran, R.A.; Hall, R.M. Movement of IS26-Associated Antibiotic Resistance Genes Occurs via a Translocatable Unit That Includes a Single IS26 and Preferentially Inserts Adjacent to Another IS26. *MBio* **2014**, *5*, e01801–e01814. [[CrossRef](#)]
39. Zhao, H.; Chen, W.; Xu, X.; Zhou, X.; Shi, C. Transmissible ST3-IncHI2 Plasmids Are Predominant Carriers of Diverse Complex IS26-Class 1 Integron Arrangements in Multidrug-Resistant *Salmonella*. *Front Microbiol.* **2018**, *9*, 2492. [[CrossRef](#)] [[PubMed](#)]
40. Mangat, C.S.; Bekal, S.; Irwin, R.J.; Mulvey, M.R. A Novel Hybrid Plasmid Carrying Multiple Antimicrobial Resistance and Virulence Genes in *Salmonella enterica* Serovar Dublin. *Antimicrob. Agents Chemother.* **2017**, *61*, e02601–e02616. [[CrossRef](#)]

41. Lee, K.Y.; Hopkins, J.D.; Syvanen, M. Direct involvement of IS26 in an antibiotic resistance operon. *J. Bacteriol.* **1990**, *172*, 3229–3236. [[CrossRef](#)]
42. Porse, A.; Schonning, K.; Munck, C.; Sommer, M.O. Survival and Evolution of a Large Multidrug Resistance Plasmid in New Clinical Bacterial Hosts. *Mol. Biol. Evol.* **2016**, *33*, 2860–2873. [[CrossRef](#)] [[PubMed](#)]
43. Enne, V.I.; Livermore, D.M.; Stephens, P.; Hall, L.M. Persistence of sulphonamide resistance in *Escherichia coli* in the UK despite national prescribing restriction. *Lancet* **2001**, *357*, 1325–1328. [[CrossRef](#)]
44. Grape, M.; Sundstrom, L.; Kronvall, G. Sulphonamide resistance gene sul3 found in *Escherichia coli* isolates from human sources. *J. Antimicrob. Chemother.* **2003**, *52*, 1022–1024. [[CrossRef](#)] [[PubMed](#)]
45. Hammerum, A.M.; Sandvang, D.; Andersen, S.R.; Seyfarth, A.M.; Porsbo, L.J.; Frimodt-Moller, N.; Heuer, O.E. Detection of sul1, sul2 and sul3 in sulphonamide resistant *Escherichia coli* isolates obtained from healthy humans, pork and pigs in Denmark. *Int. J. Food Microbiol.* **2006**, *106*, 235–237. [[CrossRef](#)] [[PubMed](#)]
46. Razavi, M.; Marathe, N.P.; Gillings, M.R.; Flach, C.F.; Kristiansson, E.; Joakim Larsson, D.G. Discovery of the fourth mobile sulfonamide resistance gene. *Microbiome*. **2017**, *5*, 160. [[CrossRef](#)] [[PubMed](#)]
47. Jordan, D.; Chin, J.J.; Fahy, V.A.; Barton, M.D.; Smith, M.G.; Trott, D.J. Antimicrobial use in the Australian pig industry: results of a national survey. *Aust. Vet. J.* **2009**, *87*, 222–229. [[CrossRef](#)] [[PubMed](#)]
48. Wong, M.H.; Liu, L.; Yan, M.; Chan, E.W.; Chen, S. Dissemination of IncI2 Plasmids That Harbor the blaCTX-M Element among Clinical Salmonella Isolates. *Antimicrob. Agents Chemother.* **2015**, *59*, 5026–5028. [[CrossRef](#)]
49. Wang, J.; Zhi, C.P.; Chen, X.J.; Guo, Z.W.; Liu, W.L.; Luo, J.; Huang, X.Y.; Zeng, L.; Huang, J.W.; Xia, Y.B.; et al. Characterization of oqxAB in *Escherichia coli* Isolates from Animals, Retail Meat, and Human Patients in Guangzhou, China. *Front Microbiol.* **2017**, *8*, 1982. [[CrossRef](#)]
50. Freire Martín, I.; AbuOun, M.; La Ragione, R.M.; Reichel, R.; Woodward, M.J. Sequence analysis of a CTX-M-1 IncI1 plasmid found in Salmonella 4,5,12:i:-, *Escherichia coli* and Klebsiella pneumoniae on a UK pig farm. *J. Antimicrob. Chemother.* **2014**, *69*, 2098–2101. [[CrossRef](#)]
51. Poole, T.L.; Callaway, T.R.; Norman, K.N.; Scott, H.M.; Loneragan, G.H.; Ison, S.A.; Beier, R.C.; Harhay, D.M.; Norby, B.; Nisbet, D.J. Transferability of antimicrobial resistance from multidrug-resistant *Escherichia coli* isolated from cattle in the USA to *E. coli* and Salmonella Newport recipients. *J. Glob. Antimicrob. Resist.* **2017**, *11*, 123–132. [[CrossRef](#)]
52. Liu, M.Y.; Worden, P.; Monahan, L.G.; DeMaere, M.Z.; Burke, C.M.; Djordjevic, S.P.; Charles, I.G.; Darling, A.E. Evaluation of ddRADseq for reduced representation metagenome sequencing. *PeerJ.* **2017**, *5*, e3837. [[CrossRef](#)] [[PubMed](#)]
53. DeMaere, M.Z.; Darling, A.E. Sim3C: Simulation of Hi-C and Meta3C proximity ligation sequencing technologies. *Gigascience* **2018**, *7*, gix103. [[CrossRef](#)] [[PubMed](#)]

