

**Supplementary Table 1. Definition of terms and categorization of prenatal malaria exposure**

<b>Definition of terms</b>	
<b>Terms</b>	<b>Definition</b>
Clinical malaria episode	Detection of <i>Plasmodium falciparum</i> parasites by qPCR (regardless of RDT and LM results) and fever
Non-malaria fever (NMF)	Fever with negative qPCR (regardless of RDT and LM results)
Asymptomatic infection	Detection of <i>Plasmodium falciparum</i> by qPCR and no fever
<i>Plasmodium falciparum</i> infection	Positive qPCR regardless of symptoms
Fever	Axillary temperature $\geq 37.5$ °C or history of fever in previous 24 hours
Acute placental malaria	Parasites present but malaria pigment absent
Chronic placental malaria	Parasites and malaria pigment present
Past placental malaria	Parasites absent but pigment present
No placental malaria	Both parasites and malaria pigment absent
<b>Categorization of prenatal malaria exposure</b>	
<b>Types of prenatal malaria exposure</b>	<b>Definition</b>
Active placental malaria	Presence of <i>Plasmodium falciparum</i> parasites in the placenta at delivery
Past placental malaria	Presence of malaria pigment by histology but not <i>Plasmodium falciparum</i> parasites at delivery
Peripheral infection	No evidence of placental malaria but detection of peripheral parasites at any time during pregnancy
No maternal infection	Negative for placental malaria and peripheral infection at any time during pregnancy

**NOTE.** qPCR, quantitative polymerase chain reaction, RDT, rapid diagnostic test, LM, light microscopy

**Supplementary Table 2: Effect of CSST/IPTp-SP on *P. falciparum* infections by multivariate logistic regression**

Characteristic	Risk factor	Univariate		Multivariate*	
		OR (95% CI)	<i>P</i> value	OR (95% CI)	<i>P</i> value
MiP preventive strategy	Standard IPTp-SP	1		1	
	CSST/IPTp-SP	1.19 (0.82-1.72)	.369	1.20 (0.82-1.74)	.348
Gravidity	Multigravid	1		1	
	Secundigravid	1.84 (1.01-3.36)	.047	1.70 (0.95-3.20)	.075
	Primigravid	0.93 (0.57-1.52)	.772	0.94 (0.57-1.53)	.798
Mother's age	>30	1			
	21-30	0.92 (0.58-1.47)	.742		
	≤20	0.86 (0.50-1.49)	.595		
Birth season	Low-transmission	1			
	High-transmission	0.85 (0.57-1.25)	.407		
ITN use	No	1			
	Yes	0.69 (0.42-1.14)	.151		
Newborn sex	Male	1			
	Female	1.04 (0.72-1.51)	.835		

**NOTE.** MiP, malaria in pregnancy; ITN, insecticide treated net; OR, Odd ratio; CI, confidence interval

\* Adjusted by variables that showed a *P* value < .1 in univariate analysis.

**Supplementary Table 3: Effect of CSST/IPTp-SP strategy on parasite densities during first clinical malaria episodes by linear regression analysis**

Characteristic	Risk factor	Univariate		Multivariate*	
		Coef (95% CI)	P value	Coef (95% CI)	P value
MiP preventive strategy	Standard IPTp-SP	1		1	
	CSST/IPTp-SP	1.08 (0.81-1.45)	.591	1.10 (0.82-1.47)	.526
Gravidity	Multigravid	1		1	
	Secundigravid	0.93 (0.63-1.37)	.700	0.92 (0.62-1.36)	.680
	Primigravid	0.73 (0.49-1.09)	.122	0.74 (0.50-1.11)	.152
Mother's age	>30	1			
	21-30	0.81 (0.57-1.16)	.257		
	≤20	0.78 (0.51-1.21)	.268		
ITN use	No	1			
	Yes	1.10 (0.77-1.57)	.589		
Birth season	Low-transmission	1			
	High-transmission	1.02 (0.76-1.37)	.890		
Newborn sex	Male	1		1	
	Female	1.22 (0.91-1.63)	.174	1.20 (0.90-1.62)	.211

**NOTE.** MiP, malaria in pregnancy; ITN, insecticide treated net; CI, confidence interval; Coef, coefficient

\*Adjusted by variables that showed a *P* value < .2 in univariate analyses.

**Supplementary Table 4: Proportion of asymptomatic infections by MiP strategy and survey**

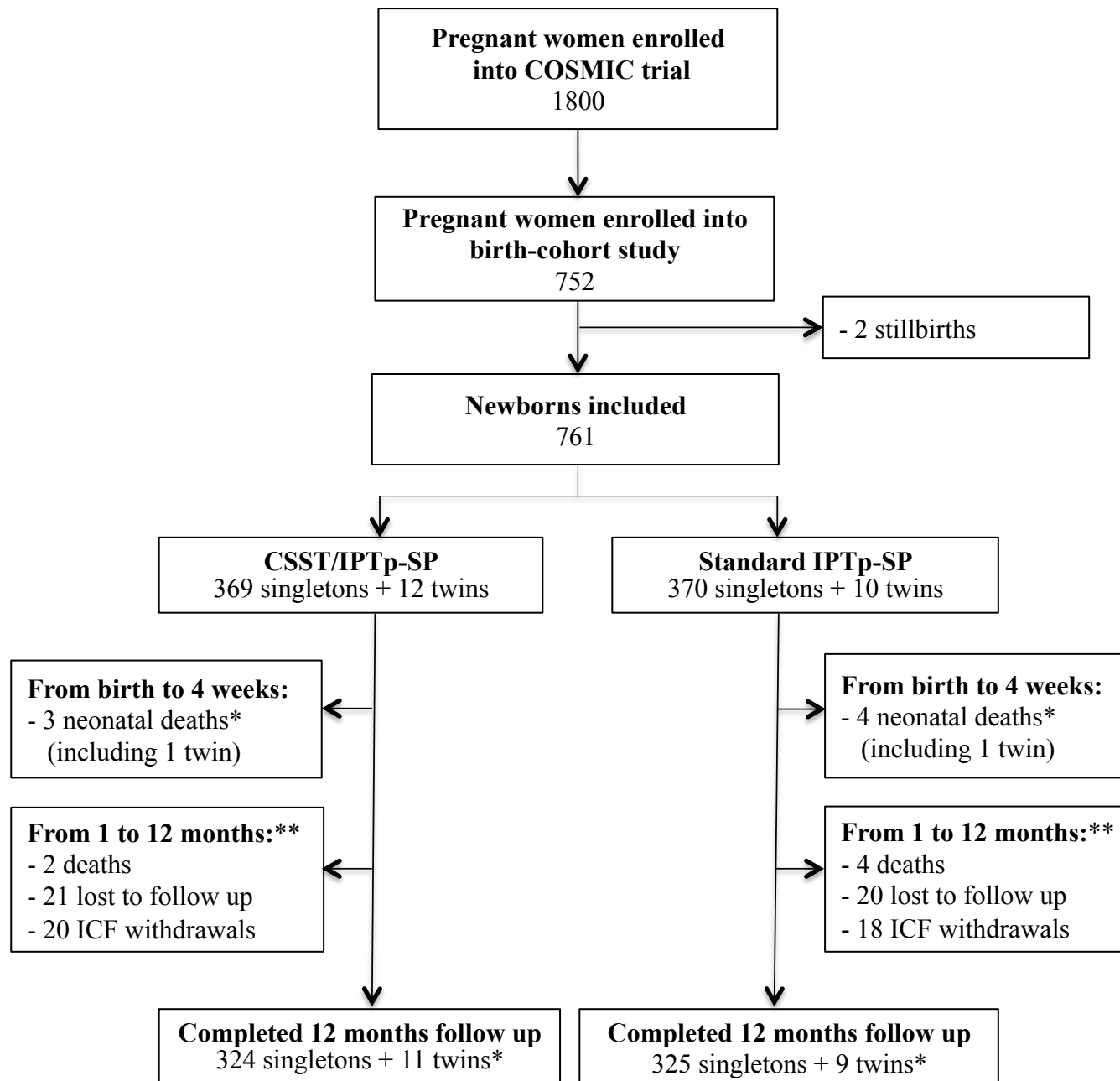
Survey time point	MiP preventive strategy	Number of infections (%)	<i>P</i> value
3 Months	Standard IPTp-SP (N= 338)	61 (18.0)	.813
	CSST/IPTp-SP (N=340)	59 (17.4)	
6 Months	Standard IPTp-SP (N=313)	58 (18.5)	.321
	CSST/IPTp-SP (N=318)	69 (21.7)	
9 Months	Standard IPTp-SP (N=288)	44 (15.3)	.056
	CSST/IPTp-SP (N= 299)	64 (18.4)	
12 Months	Standard IPTp-SP (N= 324)	96 (29.6)	.496
	CSST/IPTp-SP (N=324)	104 (32.1)	

**NOTE.** MiP, malaria in pregnancy

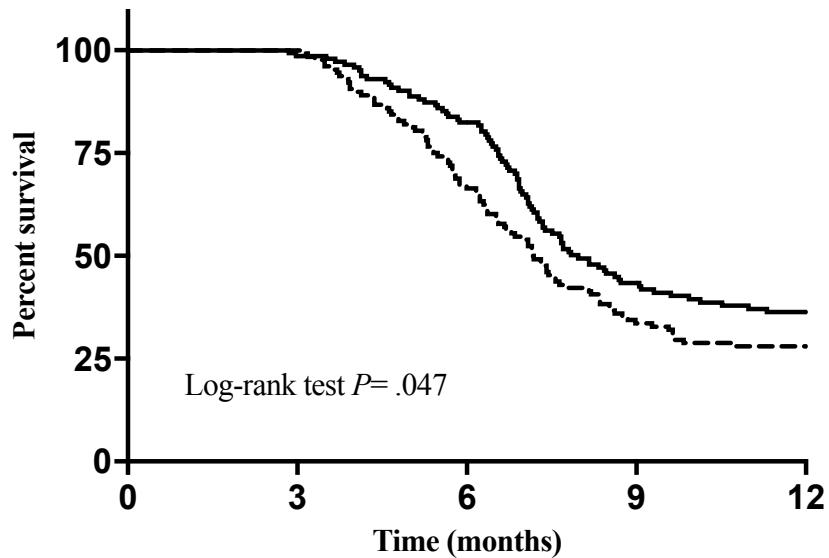
**Supplementary Table 5: Negative binomial regression analysis assessing the effect of prenatal malaria exposure on the incidence of NMFs**

Characteristic	Risk factor	Unadjusted		Adjusted*	
		IRR (95% CI)	P value	IRR (95% CI)	P value
Prenatal malaria exposure	Non-infected mothers	1		1	
	Infected mothers	0.94 (0.70-1.26)	.670	0.94 (0.71-1.26)	.695
	Past PM mothers	0.88 (0.70-1.11)	.284	0.83 (0.66-1.04)	.110
	Active PM mothers	0.92 (0.68-1.24)	.567	0.96 (0.70-1.30)	.780
LBW	No	1			
	Yes	1.06 (0.77-1.47)	.689		
Gravidity	Multigravid	1		1	
	Secundigravid	1.14 (0.90-1.43)	.274	1.24 (0.96-1.62)	.052
	Primigravid	1.32 (1.06-1.67)	.013	1.68 (1.19-2.43)	.005
Mother's age	>30	1		1	
	21-30	1.20 (0.97-1.49)	.089	1.09 (0.87-1.36)	.442
	≤20	1.31 (1.02-1.68)	.035	0.92 (0.63-1.33)	.651
Birth season	Low-transmission	1		1	
	High-transmission	0.75 (0.63-0.89)	.001	0.77 (0.65-0.93)	.006
ITN use	No	1			
	Yes	1.02 (0.83-1.26)	.839		
Newborn sex	Male	1			
	Female	0.89 (0.75- 1.05)	.174		

**NOTE.** PM, placental malaria; ITN, insecticide treated net; LBW, low birth weight; CI, confidence interval; IRR, incidence rate ratio. \*Adjusted by variables that showed a *P* value < .1 in univariate analyses.



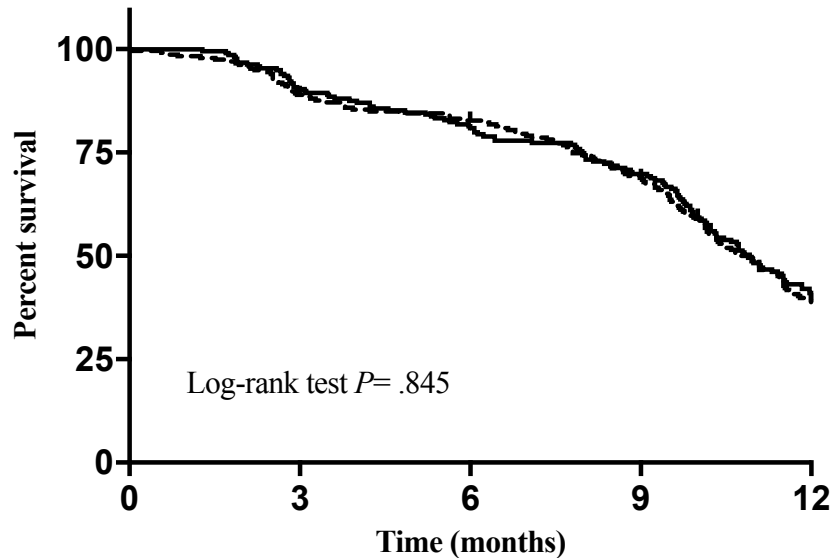
A



Number at risk at	0M	3M	6M	9M	12M
Standard IPTp-SP	132	131	86	43	35
CSST/IPTp-SP	147	144	117	58	46

--- Standard IPTp-SP

B



Number at risk at	0M	3M	6M	9M	12M
Standard IPTp-SP	235	209	187	149	82
CSST/IPTp-SP	220	197	172	138	80

— CSST/IPTp-SP