

Table I. Index values for each country, discrepancies across countries, CENS median values, WePP values

	Canada	England	Netherland	Spain	Uruguay	Japan	Korea	Range ^a	CENS-range	CENS-median	WePP
Mobility											
21111	0.91	0.95	0.92	0.91	0.97	0.88	0.86	0.11	0.04	0.92	0.93
31111	0.87	0.94	0.90	0.90	0.96	0.83	0.85	0.13	0.07	0.90	0.90
41111	0.78	0.79	0.79	0.77	0.88	0.76	0.69	0.19	0.03	0.79	0.80
51111	0.74	0.73	0.75	0.71	0.69	0.70	0.58	0.17	0.04	0.74	0.75
Self-care											
12111	0.90	0.94	0.91	0.94	0.96	0.90	0.87	0.09	0.04	0.93	0.93
13111	0.86	0.93	0.89	0.94	0.93	0.86	0.85	0.09	0.08	0.91	0.90
14111	0.75	0.82	0.79	0.84	0.87	0.82	0.75	0.12	0.09	0.81	0.80
15111	0.71	0.79	0.79	0.82	0.71	0.78	0.70	0.12	0.12	0.79	0.77
Usual activity											
11211	0.93	0.95	0.91	0.94	0.95	0.89	0.88	0.07	0.04	0.94	0.94
11311	0.91	0.94	0.87	0.94	0.94	0.85	0.85	0.09	0.07	0.92	0.91
11411	0.78	0.83	0.76	0.86	0.87	0.79	0.73	0.14	0.10	0.81	0.81
11511	0.76	0.82	0.76	0.86	0.76	0.76	0.65	0.21	0.10	0.79	0.78
Pain/discomfort											
11121	0.91	0.94	0.89	0.92	0.97	0.90	0.86	0.11	0.05	0.91	0.91
11131	0.86	0.93	0.86	0.89	0.93	0.87	0.85	0.08	0.07	0.88	0.87
11141	0.68	0.73	0.59	0.78	0.80	0.81	0.66	0.21	0.18	0.71	0.72
11151	0.63	0.67	0.54	0.67	0.72	0.75	0.62	0.21	0.13	0.65	0.67
Anxiety/depression											
11112	0.91	0.92	0.88	0.91	0.98	0.87	0.87	0.11	0.04	0.91	0.91
11113	0.87	0.90	0.81	0.86	0.94	0.83	0.86	0.13	0.09	0.87	0.87
11114	0.71	0.71	0.60	0.74	0.88	0.77	0.72	0.28	0.15	0.71	0.72
11115	0.67	0.71	0.53	0.69	0.81	0.74	0.69	0.28	0.18	0.68	0.67

Note: CENS (Canada, England, the Netherland, Spain); Model WePP (Western Preference Pattern)

^a Discrepancy between the highest and the lowest index values for each health state.

Table II. Index values showing the relative importance of *functioning* (MO, SC, UA) vs *symptoms* (PD, AD) in each country, CENS median, WePP values

	Canada	England	Netherlands	Spain	Uruguay	Japan	Korea	CENS median	WePP
22211	0.85	0.85	0.84	0.80	0.91	0.78	0.81	0.84	0.86
11122	0.87	0.87	0.82	0.83	0.96	0.82	0.83	0.85	0.85
Funct – Symptoms	-0.02	-0.02	0.02	-0.03	-0.05	-0.04	-0.02	-0.01	0.01
33311	0.74	0.80	0.75	0.78	0.85	0.66	0.75	0.77	0.77
11133	0.79	0.83	0.72	0.76	0.88	0.76	0.81	0.77	0.77
Funct – Symptoms	-0.05	-0.03	0.03	0.02	-0.03	-0.10	-0.06	0.00	0.00
44411	0.45	0.45	0.43	0.48	0.64	0.49	0.52	0.45	0.47
11144	0.44	0.45	0.24	0.53	0.70	0.64	0.56	0.45	0.47
Funct – Symptoms	0.01	0.00	0.19	-0.05	-0.06	-0.15	-0.04	0.00	0.00
55511	0.35	0.34	0.39	0.40	0.18	0.36	0.28	0.37	0.36
11155	0.36	0.38	0.12	0.37	0.54	0.55	0.48	0.37	0.37
Funct – Symptoms	-0.01	-0.04	0.27	0.03	-0.36	-0.19	-0.20	0.00	-0.01

Note: CENS (Canada, England, the Netherland, Spain); Model WePP (Western Preference Pattern)

Table III. The proportion of the respective scale lengths between levels in each country, CENS median, WePP

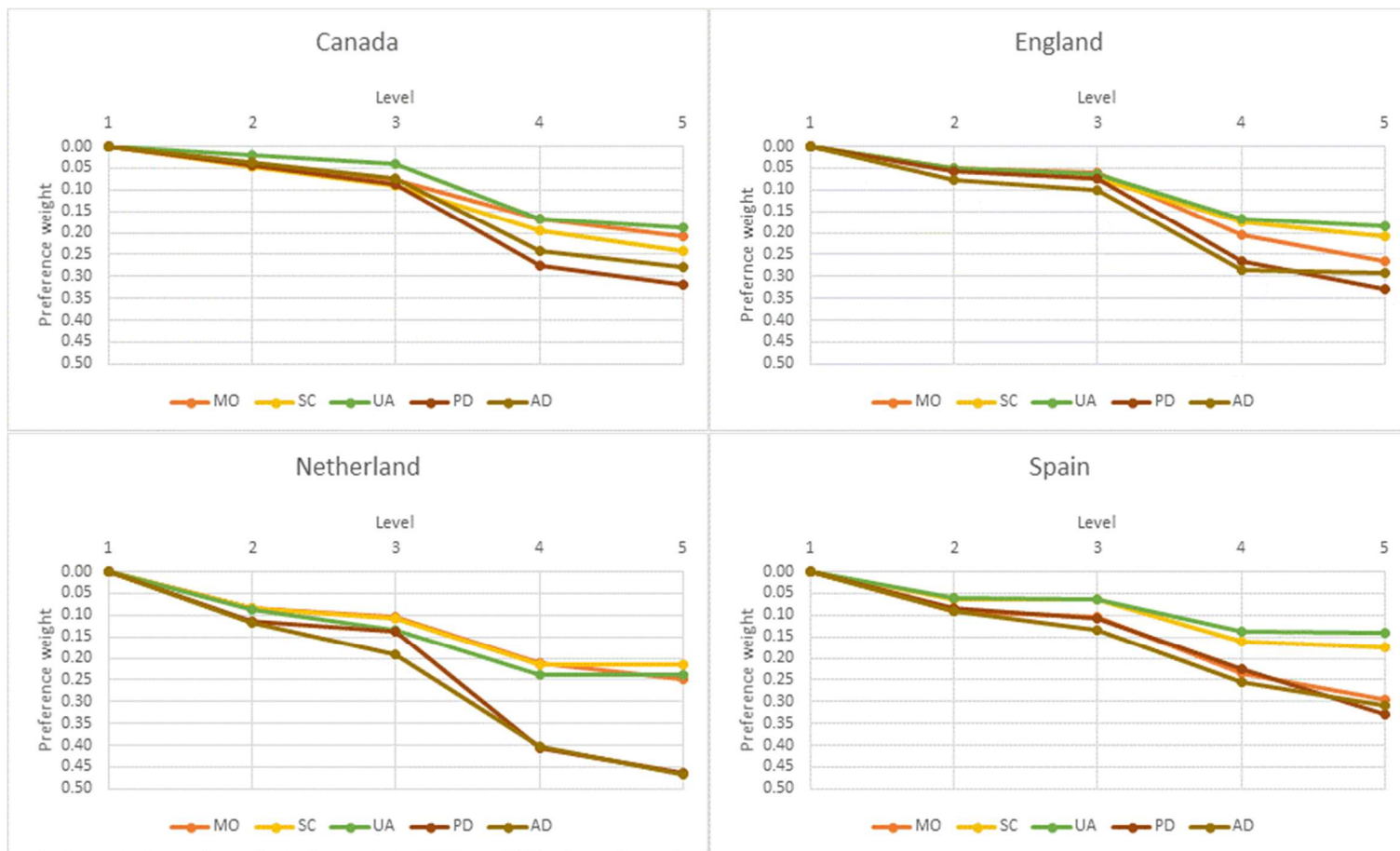
	Can	Scale %	Eng	Scale %	Neth	Scale %	Spain	Scale %	Urug	Scale %	Japan	Scale %	Korea	Scale %	CENS median	Scale %	Model WePP	Scale %
11111	0.95	--	1.00	--	1.00	--	1.00	--	1.00	--	1.00	--	1.00	--	1.00			
22222	0.76	17	0.71	22	0.70	20	0.64	30	0.88	9	0.67	33	0.73	25	0.71	23	0.74	21
33333	0.56	17	0.63	7	0.51	13	0.55	7	0.74	11	0.48	18	0.65	8	0.56	12	0.57	14
44444	0.04	49	-0.10	57	-0.29	56	0.02	44	0.35	31	0.19	28	0.25	37	-0.04	48	-0.03	48
55555	-0.15	17	-0.28	14	-0.45	11	-0.22	19	-0.26	49	-0.03	21	-0.07	29	-0.25	17	-0.24	17
		100		100		100		100		100		100		100		100		100

Note: CENS (Canada, England, the Netherland, Spain); Model WePP (Western Preference Pattern)

Table IV. Extracting some key characteristics from each country's value set

	Can	Engl	Neth	Spain	Urug	Jap	Kor	WePP-model
Dimensions; relative importance								
(PD + AD) \approx (MO + SC + UA)	X	X	(X)	X				X
PD \approx AD	X	X	X	(X)				X
MO \approx SC	X	X	X					X
UA < SC	X	X		X				X
Levels; characteristics of the scale								
Drop at the top (N1)			X	X	X	X	X	X
Kink at level 3 in all dimensions	X	X	X	X			X	X
Reverse kink at level 4 in all dimensions	X	X	X	(X)			X	X
Scale value ranges								
22222 < 0.7 – 0.8 >	X	X	X				X	X
33333 < 0.5 – 0.6 >	X	(X)	X	X				X
44444 < -0.1 – 0.1 >	X	X		X				X
55555 < -0.2	(X)	X	X	X	X			X

a) The CENS countries



b) Non-western countries

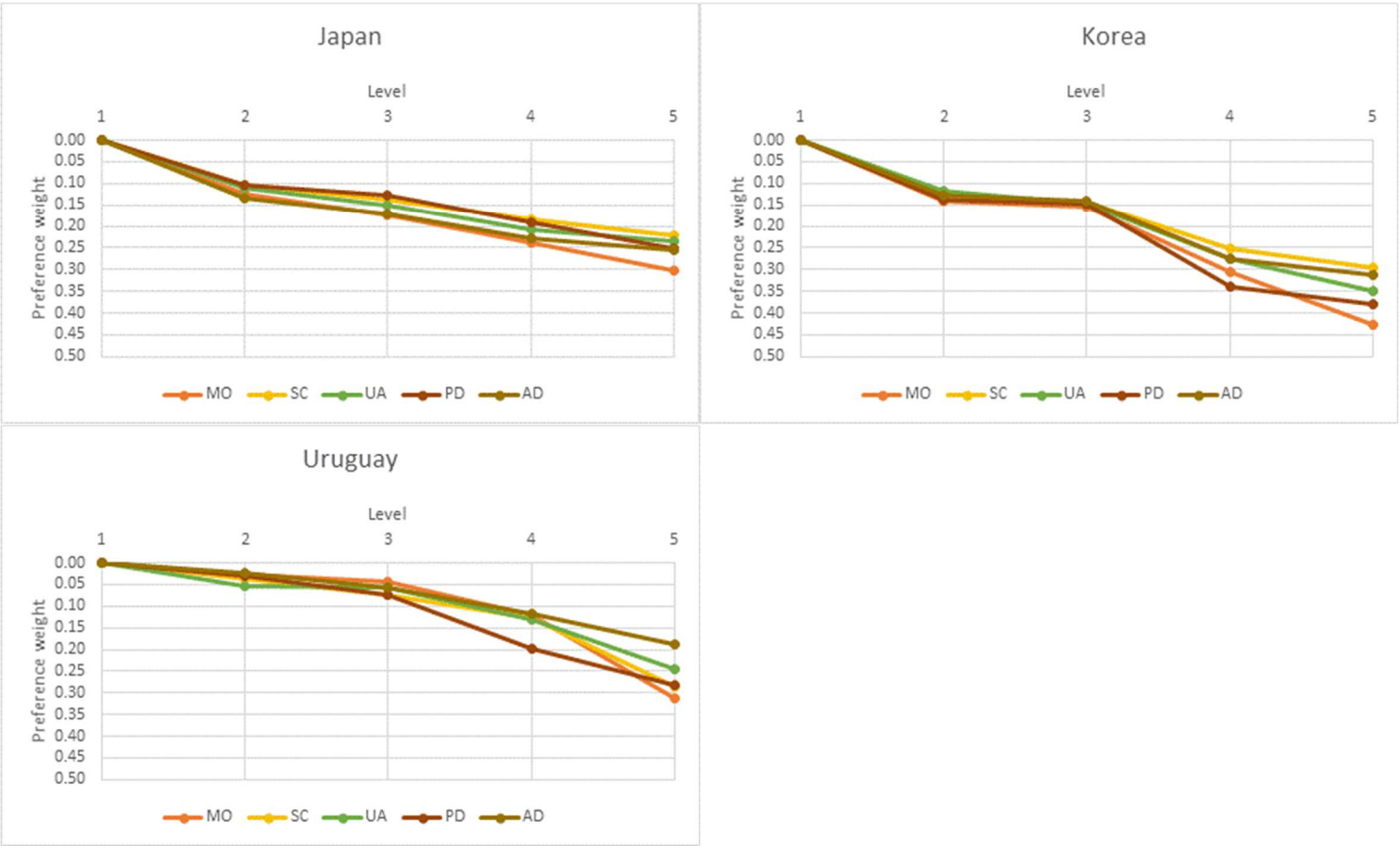
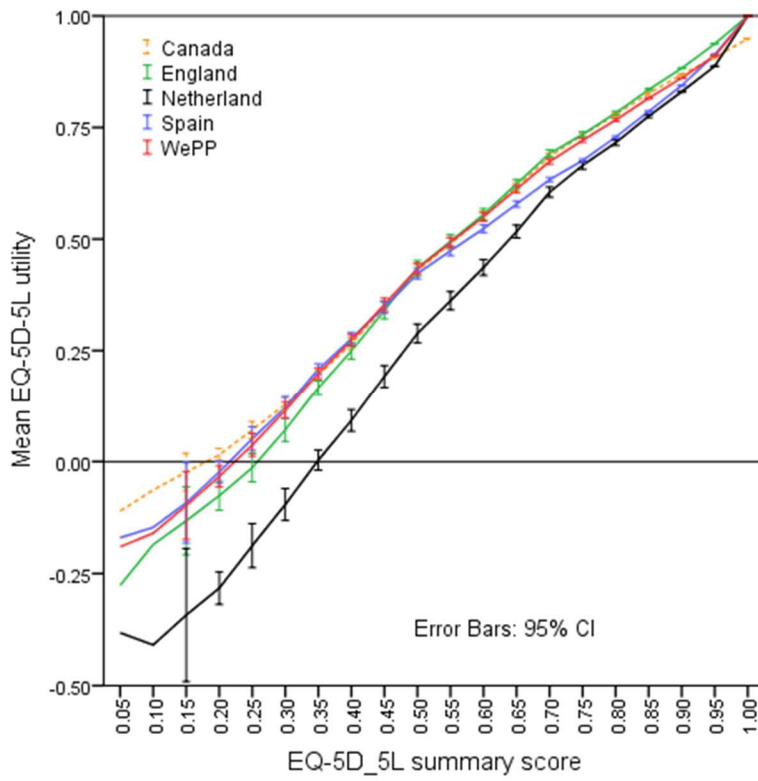


Figure 1. Preference weights (utility decrements) across dimensions and levels in each country

a) MIC sample (N = 7,933)



b) Total set of EQ-5D-5L health states (all 3125 combinations)

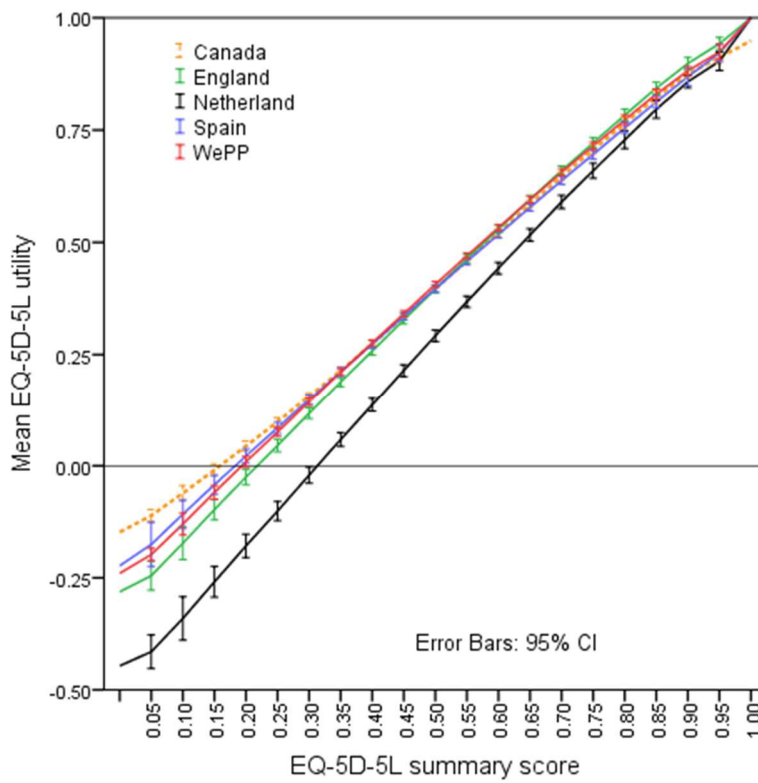


Figure 2. Mean index values by severity level, CENS countries and WePP

Appendix Table A1. Methodological differences across value sets

	Canada	England	Netherland	Spain	Uruguay	Japan	Korea
Population sample, N	1073	996 ^a	979	973	794	1026	1080
Age	18-89	18-75+	18-80+	18-75+	20-83	20-69	19-60+
Sampling strategy	Quota	Random	Stratified	Stratified	Stratified	Stratified	Stratified
Elicitation method(s)	cTTO & tTTO	cTTO & DCE	cTTO	cTTO & DCE	cTTO	cTTO	cTTO
Econometric modelling	Linear model ^b	Hybrid	Tobit	Hybrid	Robust regression	Linear mixed	Linear mixed
Deviation from full health (N1)	--	--	0.047	0.007	0.013	0.061	0.096

^a 84 participants were excluded from TTO data due to inconsistency of responses (yielding 912 for TTO).

^b A model with linear terms for main effects (modeling took into account censoring and random effects).

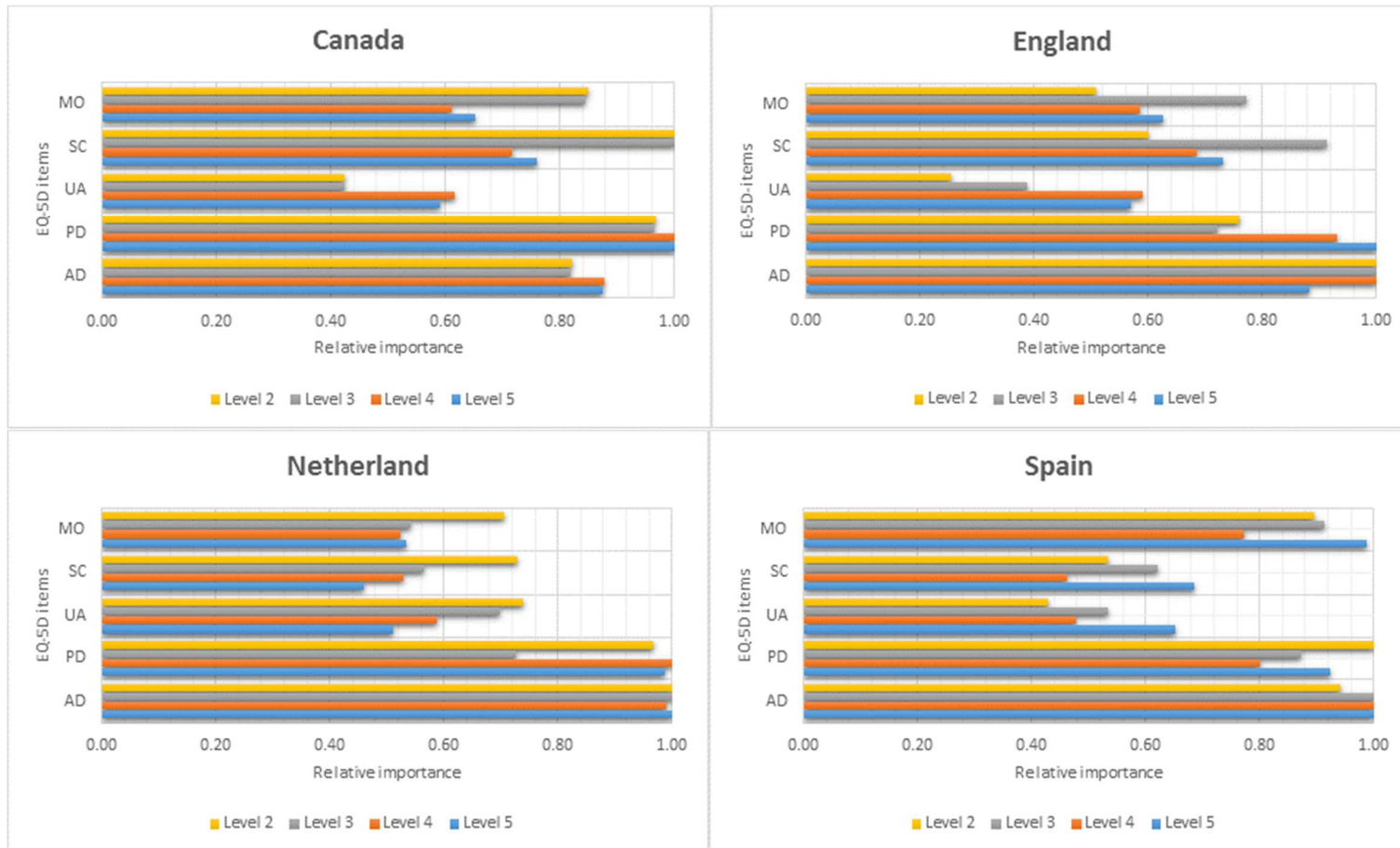
Appendix Table A2. The relative importance of dimensions: *ranking* at each level within each country

		Can	Rank	Eng	Rank	Neth	Rank	Spa	Rank	CENS Σ rank	Urug	Rank	Jap	Rank	Kor	Rank
21111		0.91	2	0.95	4	0.92	5	0.91	1	12	0.97	3	0.88	2	0.86	1
31111		0.87	3	0.94	4	0.90	5	0.90	3	15	0.96	5	0.83	1	0.85	1
41111		0.78	4	0.79	3	0.79	4	0.77	2	13	0.88	4	0.76	1	0.69	2
51111		0.74	4	0.73	3	0.75	3	0.71	3	13	0.69	1	0.70	1	0.58	1
Total Rank MO			13		14		17		9	53		13		5		5
12111		0.90	1	0.94	2	0.91	3	0.94	4	10	0.96	2	0.90	4	0.87	3
13111		0.86	1	0.93	2	0.89	4	0.94	4	11	0.93	1	0.86	4	0.85	1
14111		0.75	3	0.82	4	0.79	4	0.84	4	15	0.87	2	0.82	5	0.75	5
15111		0.71	3	0.79	4	0.79	5	0.82	4	16	0.71	2	0.78	5	0.70	5
Total Rank SC			8		12		16		16	52		7		18		14
11211		0.93	5	0.95	4	0.91	3	0.94	4	16	0.95	1	0.89	3	0.88	5
11311		0.91	5	0.94	4	0.87	3	0.94	4	16	0.94	3	0.85	3	0.85	1
11411		0.78	4	0.83	5	0.76	3	0.86	5	16	0.87	2	0.79	3	0.73	4
11511		0.76	5	0.82	5	0.76	4	0.86	5	19	0.76	4	0.76	3	0.65	3
Total Rank UA			19		18		13		18	68		10		12		13
11121		0.91	2	0.94	2	0.89	2	0.92	3	8	0.97	3	0.90	4	0.86	1
11131		0.86	1	0.93	2	0.86	2	0.89	2	8	0.93	1	0.87	5	0.85	1
11141		0.68	1	0.73	2	0.59	1	0.78	3	7	0.80	1	0.81	4	0.66	1
11151		0.63	1	0.67	1	0.54	2	0.67	1	5	0.72	3	0.75	4	0.62	2
Total Rank PD			5		7		7		9	28		8		17		5
11112		0.91	2	0.92	1	0.88	1	0.91	1	6	0.98	5	0.87	1	0.87	3
11113		0.87	3	0.90	1	0.81	1	0.86	1	6	0.94	3	0.83	1	0.86	5
11114		0.71	2	0.71	1	0.60	2	0.74	1	6	0.88	4	0.77	2	0.72	3
11115		0.67	2	0.71	2	0.53	1	0.69	2	7	0.81	5	0.74	2	0.69	4
Total Rank AD			9		5		5		5	24		17		6		15

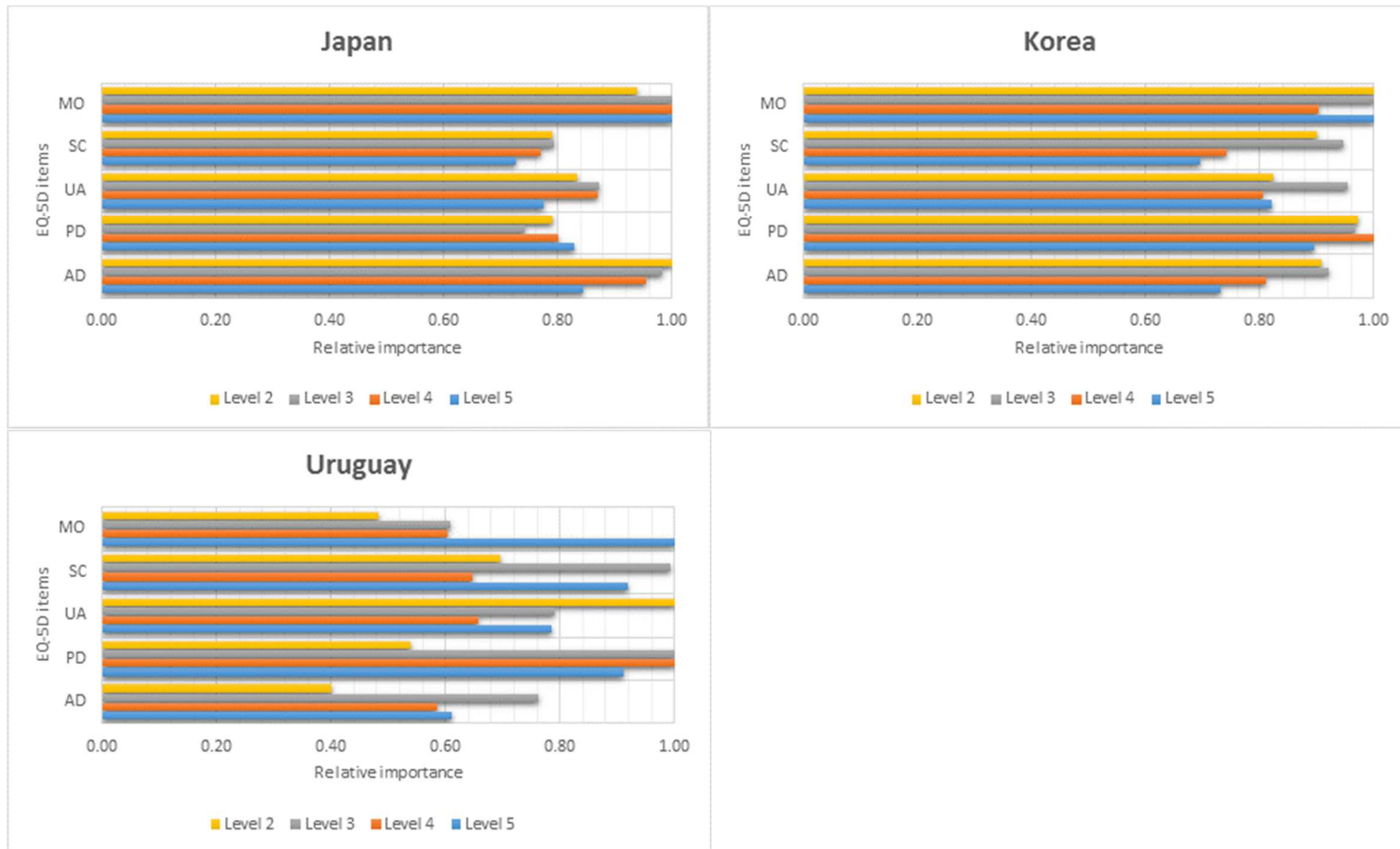
Appendix Table A3. Comparing the observed cTTO values in the Dutch data, with values produced by the Dutch model and the WePP model, for the most frequent health state combinations (N>5) in the MIC data.

	N	Obs. cTTO	Dutch model	WePP
11112	420	0.91	0.88	0.91
11121	1135	0.92	0.89	0.91
11122	672	0.93	0.82	0.85
11211	29	0.93	0.91	0.94
11212	21	0.89	0.84	0.88
11221	96	0.86	0.85	0.88
12121	7	0.85	0.85	0.87
21111	30	0.93	0.92	0.93
21112	9	0.88	0.85	0.87

a) The CENS countries

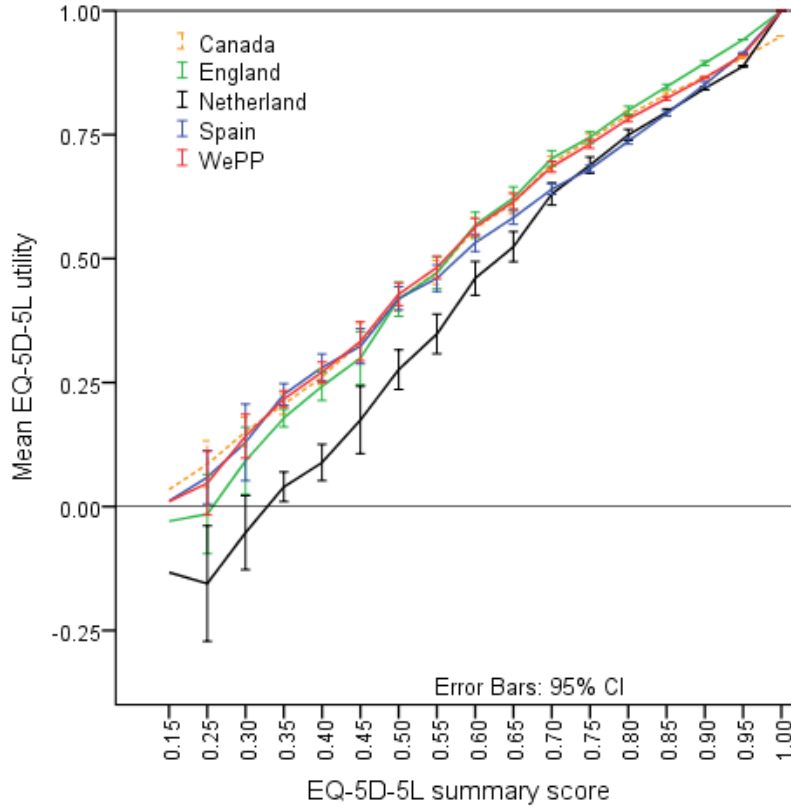


b) Non-Western countries

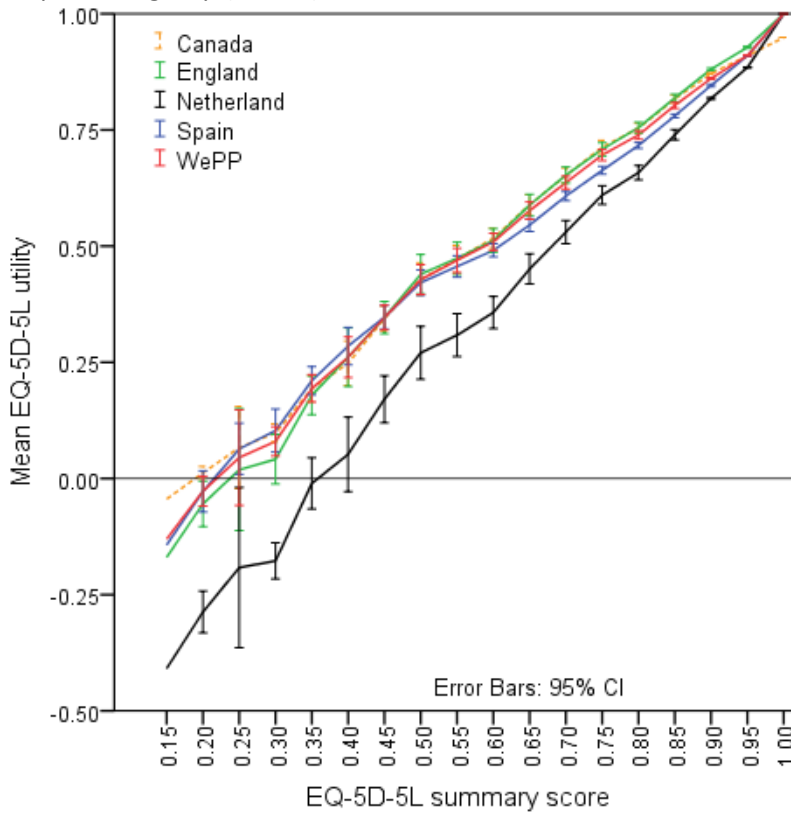


Appendix Figure A1. A closer look: The relative importance of dimensions at each level

a) Arthritis group (N=929)



b) Depression group (N=919)



Appendix Figure A2. Mean index values by severity level, CENS countries and WePP