

RESEARCH ARTICLE

Matrix-assisted laser desorption/ionization time-of-flight mass spectrometry for the identification of *Burkholderia pseudomallei* from Asia and Australia and differentiation between *Burkholderia* species

Vichaya Suttisunhakul¹, Apinya Pumpuang², Peeraya Ekchariyawat¹, Vanaporn Wuthiekanun³, Mindy G. Elrod⁴, Paul Turner⁵, Bart J. Currie⁶, Rattanaphone Phetsouvanh⁷, David A. B. Dance^{7,8}, Direk Limmathurotsakul^{3,9}, Sharon J. Peacock⁸, Narisara Chantratita^{1,3*}



OPEN ACCESS

Citation: Suttisunhakul V, Pumpuang A, Ekchariyawat P, Wuthiekanun V, Elrod MG, Turner P, et al. (2017) Matrix-assisted laser desorption/ionization time-of-flight mass spectrometry for the identification of *Burkholderia pseudomallei* from Asia and Australia and differentiation between *Burkholderia* species. PLoS ONE 12(4): e0175294. <https://doi.org/10.1371/journal.pone.0175294>

Editor: Adriana Calderaro, Universita degli Studi di Parma, ITALY

Received: August 26, 2016

Accepted: March 23, 2017

Published: April 6, 2017

Copyright: © 2017 Suttisunhakul et al. This is an open access article distributed under the terms of the [Creative Commons Attribution License](https://creativecommons.org/licenses/by/4.0/), which permits unrestricted use, distribution, and reproduction in any medium, provided the original author and source are credited.

Data Availability Statement: All relevant data are within the paper and its Supporting Information files.

Funding: This study was supported by a Wellcome Trust Career Development award in Public Health and Tropical Medicine, UK (grant 087769/Z/08/Z to NC) (<http://www.wellcome.ac.uk>) and the National Institute of Allergy and Infectious Diseases of the National Institutes of Health under award number

1 Department of Microbiology and Immunology, Faculty of Tropical Medicine, Mahidol University, Bangkok, Thailand, **2** Department of Clinical Pathology, Faculty of Medicine, Navamindradhiraj University, Bangkok, Thailand, **3** Mahidol-Oxford Tropical Medicine Research Unit, Faculty of Tropical Medicine, Mahidol University, Bangkok, Thailand, **4** Bacterial Special Pathogens Branch, Division of High-Consequence Pathogens and Pathology, National Center for Zoonotic and Emerging Infectious Diseases, Centers for Disease Control and Prevention (CDC), Atlanta, Georgia, United States of America, **5** Cambodia-Oxford Medical Research Unit, Angkor Hospital for Children, Siem Reap, Cambodia; Centre for Tropical Medicine and Global Health, Nuffield Department of Medicine, University of Oxford, Oxford, United Kingdom, **6** Department of Infectious Diseases, Royal Darwin Hospital, Darwin, Northern Territory, Australia; Global and Tropical Health Division, Menzies School of Health Research, Darwin, Northern Territory, Australia, **7** Lao-Oxford-Mahosot Hospital-Wellcome Trust Research Unit, Microbiology Laboratory, Mahosot Hospital, Vientiane, Lao People's Democratic Republic; Centre for Tropical Medicine and Global Health, University of Oxford, Oxford, United Kingdom, **8** London School of Hygiene and Tropical Medicine, London, United Kingdom, **9** Department of Tropical Hygiene, Faculty of Tropical Medicine, Mahidol University, Bangkok, Thailand

* narisara@tropmedres.ac

Abstract

Matrix-assisted laser desorption/ionization time-of-flight mass spectrometry (MALDI-TOF MS) is increasingly used for rapid bacterial identification. Studies of *Burkholderia pseudomallei* identification have involved small isolate numbers drawn from a restricted geographic region. There is a need to expand the reference database and evaluate *B. pseudomallei* from a wider geographic distribution that more fully captures the extensive genetic diversity of this species. Here, we describe the evaluation of over 650 isolates. Main spectral profiles (MSP) for 26 isolates of *B. pseudomallei* (N = 5) and other *Burkholderia* species (N = 21) were added to the Biotyper database. MALDI-TOF MS was then performed on 581 *B. pseudomallei*, 19 *B. mallei*, 6 *B. thailandensis* and 23 isolates representing a range of other bacterial species. *B. pseudomallei* originated from northeast and east Thailand (N = 524), Laos (N = 12), Cambodia (N = 14), Hong Kong (N = 4) and Australia (N = 27). All 581 *B. pseudomallei* were correctly identified, with 100% sensitivity and specificity. Accurate identification required a minimum inoculum of 5×10^7 CFU/ml, and identification could be performed on spiked blood cultures after 24 hours of incubation. Comparison between a dendrogram constructed from MALDI-TOF MS main spectrum profiles and a phylogenetic tree based on

U01AI115520 to NC (<https://www.nih.gov>). VS was supported by a Ph.D. scholarship from Faculty of Tropical Medicine Mahidol University (www.tm.mahidol.ac.th). The funder had no role in study design and interpretation, or the decision to publish, or preparation of the manuscript.

Competing interests: The authors have declared that no competing interests exist.

recA gene sequencing demonstrated that MALDI-TOF MS distinguished between *B. pseudomallei* and *B. mallei*, while the *recA* tree did not. MALDI-TOF MS is an accurate method for the identification of *B. pseudomallei*, and discriminates between this and other related *Burkholderia* species.

Introduction

The genus *Burkholderia* is composed of Gram-negative species that are predominantly non-pathogenic environmental saprophytes. A clinically important exception is *Burkholderia pseudomallei*, which causes an estimated 165,000 cases of melioidosis per year worldwide, of which 89,000 are predicted to be fatal [1]. A high proportion of reported cases occur in northeast Thailand, where melioidosis is the second most common cause of community-acquired bacteremia and the third most common cause of death from infectious diseases [2]. *B. pseudomallei* receives additional attention because of its biothreat potential [3], and because of infection in travelers returning from endemic regions [4, 5]. In Thailand, *B. pseudomallei* is widely distributed in soil and environmental water [6–8] and may be found together with the closely related *B. thailandensis*, which is very rarely associated with human disease [9].

Making an accurate diagnosis of melioidosis is key to patient outcome since empiric antimicrobial therapy for sepsis does not include the first-line drugs recommended for melioidosis (ceftazidime or a carbapenem). Diagnosis relies on bacterial isolation and identification since clinical manifestations lack specificity. *B. pseudomallei* may be isolated from a range of clinical specimen types, but half of melioidosis cases have positive blood cultures. Direct identification of *B. pseudomallei* in positive blood cultures can reduce the time to diagnostic confirmation by 24 hours. This can be achieved using a rapid immunofluorescent assay (IFA), in which the most common antibody described is a monoclonal that recognizes *B. pseudomallei* capsular polysaccharide (CPS) [10]. This reagent is also used in a latex agglutination assay that can identify *B. pseudomallei* directly in blood cultures, other sample types, and colonies picked from culture media [11]. A monoclonal antibody against CPS has also been incorporated into a lateral flow assay [12], which can detect *B. pseudomallei* directly in a range of clinical samples and cultures.

The recent recognition of a *B. thailandensis* variant that expresses *B. pseudomallei*-like capsular polysaccharide (Bp-like CPS) [13] has important implications for the accuracy of *B. pseudomallei* identification assays based on antibody detection of CPS, since this gives a false positive result. The potential relevance of this has increased with the recent finding that *B. thailandensis* expressing Bp-like CPS is widely distributed in the environment in Thailand (V. Hantrakul, personal communication). Occasional cross-reacting isolates of *B. cepacia* have also been observed (D. Dance, personal communication). Methods that distinguish between *B. pseudomallei* and other *Burkholderia* species such as *B. thailandensis* include arabinose assimilation, more extended biochemical testing such as that incorporated in the commercial API 20NE biochemical kit (bioMérieux), real-time PCR, and sequencing [14–20]. Automated identification systems are available in many laboratories, although these may misidentify *B. pseudomallei* as *B. cepacia* [21–24].

Matrix-assisted laser desorption/ionization time-of-flight mass spectrometry (MALDI-TOF MS) has been increasingly introduced into diagnostic laboratories for rapid bacterial identification. The first published study of its application to *Burkholderia* spp. evaluated 10 *B. pseudomallei* and 17 *B. mallei* isolates and generated reference spectra data [25]. Several case reports

have since reported its use to diagnose melioidosis, including infection in returning travelers [5, 26–29]. It has also been reported to differentiate between *B. pseudomallei* wild-type and single gene mutants [30], to delineate clustering in a collection of 11 *B. pseudomallei* from north-east Thailand [31], and to determine ceftazidime resistance simultaneously with *B. pseudomallei* identification [32]. An inter-laboratory trial for the identification of highly pathogenic bacteria using MALDI-TOF MS included one isolate each of *B. pseudomallei* and *B. mallei* and concluded that a compilation of complete and comprehensive databases with spectra from a broad strain collection was of paramount importance for accurate microbial identification [33]. The largest evaluation of *B. pseudomallei* to date was undertaken using 66 *B. pseudomallei*. Nearly all of these (62/66 isolates) were initially misidentified as *B. thailandensis* using an existing database (DB5627), but an enhanced database subsequently identified all correctly [34]. A limitation of this study was that most of the isolates (63/66) were from a single country (Taiwan), the remaining 3 originating from Beijing, China.

At the time that this study was performed, representation of the 30 *Burkholderia* species in the biotyper database was limited and did not include *B. pseudomallei*, *B. ubonensis*, *B. oklahomensis*, *B. humptydooensis* or *B. mallei*. This indicates a need to expand the reference database and potentially increase the sensitivity and specificity of the assay. Furthermore, the need remains to undertake an evaluation of MALDI-TOF MS to identify *B. pseudomallei* drawn from a wider geographic distribution, which is important because of the genetic distinctiveness of isolates from Asia compared with Australasia and the highly plastic and variable genome, both of which could impact on the performance of MALDI-TOF MS. Previous studies have also lacked the inclusion of *B. thailandensis* expressing Bp-like CPS. The aim of this study was to expand the MALDI-TOF MS database with *Burkholderia* spp. and then evaluate this technology using a large collection of *B. pseudomallei* together with other *Burkholderia* spp. including *B. thailandensis* expressing Bp-like CPS. We added value to our findings by testing its performance using blood cultures spiked with *B. pseudomallei*, and evaluating the similarity between *B. pseudomallei* clusters arising from MALDI-TOF MS data compared with phylogenetic characterization based on *recA* sequence data.

Materials and methods

Bacterial isolates

B. pseudomallei and other *Burkholderia* species used in this study are detailed in Table 1. In brief, these included 5 laboratory *B. pseudomallei* strains, 581 *B. pseudomallei* isolated from the environment, humans or animals, 46 isolates belonging to eight other *Burkholderia* species, and 23 isolates representing a range of other bacterial pathogens. *B. pseudomallei* were cultured from humans (N = 550) or other animals (N = 14) with melioidosis, or from the environment (N = 17), and originated from northeast and east Thailand (N = 524), Laos (N = 12), Cambodia (N = 14), Hong Kong (N = 4) and Australia (N = 27). A single isolate was used from each patient, animal or environmental source. The other bacterial species were: *Acinetobacter baumannii*, *Enterobacter aerogenes* NCTC 10006, *E. cloacae*, *Enterococcus faecalis* ATCC 29212, *Escherichia coli*, *Haemophilus influenzae* NCTC 11931, *Hafnia alvei*, *Klebsiella oxytoca*, *K. pneumoniae* ATCC 700603, *Morganella morganii*, *Neisseria gonorrhoeae*, *Proteus mirabilis*, *Pseudomonas aeruginosa*, *P. putida*, *P. stutzeri*, *Salmonella enterica* serovar Paratyphi A, *S. enterica* serovar Paratyphi B NCTC 3176, *S. enterica* serovar Typhi NCTC 8385, *Serratia marcescens*, *Staphylococcus aureus* ATCC 25923, *Stenotrophomonas maltophilia*, *Streptococcus pneumoniae* ATCC 49619 and *S. pyogenes*. The original identification of *B. pseudomallei* was performed by the submitting laboratories using a range of different methods that reflected variation in clinical and research practice and the lack of a single gold standard method. In Asia,

Table 1. *B. pseudomallei* and other *Burkholderia* species used in this study.

Bacterial isolates (Total number)	Source or strains			Year of isolation	
	Location	Human	Animal		Environment
<i>B. pseudomallei</i> (N = 586)	Reference strains (K96243, NR9921, 1106a, 1026b, 576a)	5			Varied
	Sunpasitthiprasong Hospital, Ubon Ratchathani, northeast Thailand	402			2012–2013
	Ubon Ratchathani, northeast Thailand	27		14	1990–2001
	Udon Thani Hospital, northeast Thailand	35			2015–2016
	Khon Kaen Hospital, Khon Kaen, northeast Thailand	19			2015–2016
	Nakhon Phanom Hospital, northeast Thailand	19			2015–2016
	Buddhasothorn Hospital, Chachoengsao, east Thailand	8			2014
	Australia	14	10	3	2002
	Cambodia	14			2006–2008
	Lao PDR	12			2003–2005
	Hong Kong		4		1987 and 2007
<i>B. mallei</i> (N = 21)	Mongolia (Mongolia1, Mongolia2)		2		1960
	Turkey (NH insan, Beygir CAU, Uludag)		6		1970–1984
	India (NCTC 3708, NCTC 3709)		2		1931–1932
	China (NCTC 10245, ATCC 23344, EY2233, EY2235, EY2236, EY2237, EY2238 and EY2239)		8		1942–1951
	Hungary (NCTC 10229, NCTC 10230)		2		1970–1984
	Unknown (EY100)		1		Unknown
<i>B. thailandensis</i> (N = 4)	Thailand (E175, E264, E421, E426)			4	1991–2001
<i>B. thailandensis</i> variants with <i>B. pseudomallei</i> -like capsular polysaccharide (N = 6)	Thailand (SBXCC001, SBXCC005a, SBXCB001, SBXPL007a, SBXPR001)			5	2014–2015
	Cambodia (E555)			1	2005
<i>B. cepacia</i> (N = 8)	Thailand (U668, 10223, NCTC 10744, MI1035)	4			Unknown
	Thailand (2.1B, SBCAU015)			2	Unknown
	Lao PDR (39628)	1			Unknown
	Lao PDR (LNT40)			1	Unknown
<i>B. humptydoensis</i> (N = 1)	Australia (MSMB43)	1			Unknown
<i>B. oklahomensis</i> (N = 3)	Oklahoma, USA (c6786)	1			1973
	Oklahoma, USA (c7532, c7533)			2	1973
<i>B. multivorans</i> (N = 1)	UK (LMG16660)	1			Unknown
<i>B. vietnamiensis</i> (N = 1)	Vietnam (LMG6999)	1			Unknown
<i>B. ubonensis</i> (N = 1)	Thailand (DMST866)			1	Unknown

<https://doi.org/10.1371/journal.pone.0175294.t001>

the predominant method used was a combination of colony morphology, antibiotic susceptibility pattern, arabinose assimilation and latex agglutination [35]. Elsewhere, colony appearance followed by API20NE (bioMérieux) was commonly used. Other *Burkholderia* species were identified using one or more of biochemical methods, including *16S rRNA* sequence, *recA* sequence and DNA-DNA hybridization [14–20]. Additional, non-*Burkholderia* species were identified using standard laboratory methodology supplied by the Department of Medical Science, Ministry of Public Health, Thailand. All isolates were shipped in accordance with international guidelines to an accredited BSL-3 laboratory in Bangkok where the evaluation was conducted. Unless otherwise specified, bacteria were cultured on Columbia agar at 37°C

in air for 24 h. All isolates were stored in trypticase soy broth (TSB) with 15% glycerol at -80°C .

Latex agglutination test and multilocus sequence typing

Latex agglutination reagent based on the 4B11 monoclonal antibody to capsular polysaccharide of *B. pseudomallei* was prepared and the assay performed as previously described [11, 35]. Multilocus sequence type (ST) was known for 21 *B. pseudomallei*, 21 *B. mallei* and 10 *B. thailandensis* isolates, which have been reported previously [13, 36, 37].

MALDI-TOF MS analysis

Protein was extracted from bacteria using the formic acid extraction method as previously described [38, 39], with several modifications. In brief, a loopful of bacteria was harvested from an agar plate and suspended in 300 μl ultra-pure distilled water (UDW), to which 900 μl absolute ethanol (Merck, Darmstadt, Germany) was added. The suspension was centrifuged at 16,200 g for 2 min and the pellet left to dry at room temperature. Twenty-five microliters of 70% formic acid (V/V) (Sigma-Aldrich, Fluka, MO, USA) was added and mixed thoroughly, followed by an equal volume of acetonitrile (Merck, Darmstadt, Germany). The mixture was centrifuged at 16,200 g for 2 min, and then 1 μl of supernatant was spotted onto a MSP-384 polished steel target plate (Bruker Daltonics, Germany). After drying in air, all spots were overlaid with 1 μl of matrix, α -cyano-4-hydroxycinnamic acid (HCCA) (Bruker Daltonics, Germany) dissolved in a solution of 50% acetonitrile, 2.5% trifluoroacetic acid and 47.5% water (Sigma-Aldrich, Fluka, MO, USA). Each spot was measured in 200 shot steps for a total of 1200 laser shots using an MALDI-TOF Mass Spectrometer Autoflex speed (Bruker Daltonics, Germany) and FlexControl software (version 3.4.135, Bruker Daltonics, Germany). Spectra were obtained in the linear positive mode with an accelerating voltage of 19.5 kV and analyzed within a mass range of 2,000–20,000 Da. Before measurement, the instrument was calibrated using the Bacterial Test Standard (BTS) following the manufacturer's instructions (Bruker Daltonics, Germany). *E. coli* DH5-Alpha was used as a positive control and matrix solution was used as a negative control. Identification was achieved using the MALDI-Biotyper software (version 3.1, Bruker Daltonics, Germany). These experiments were performed in duplicate and the scores were averaged. Interpretation was performed according to the manufacturer's recommendation; score of ≥ 2.3 , reliable species level identification; 2.0–2.29, probable species level identification; 1.7–1.9, probable genus level identification; ≤ 1.7 , unreliable identification [40]. In a pilot study, at least 4 colonies (size ~ 1 mm) were required for *B. pseudomallei* to be identified with a score of ≥ 2.3 .

MALDI-TOF MS reference database

The Bruker Daltonics database (version 3.3.1.0) was expanded by adding main spectrum profiles (MSP) for 26 isolates after adjusting the baseline and smoothness using Flexanalysis software (version 3.4, Bruker Daltonics, Germany). Twenty spots of a single protein extract from each isolate were used to construct the MSP using the MALDI-Biotyper software (version 3.1). The isolates used were as follows: *B. pseudomallei* (K96243, H2660a, H2708a, 1106a and 1026b), *B. cepacia* (LNT40, 10223, 2.1B, 39628, MI1035, NCTC 10744, SBCAU015 and U668), *B. humptydoensis* (MSMB43), *B. mallei* (NCTC 10247 and Mongolia 1), *B. multivorans* (LMG16660), *B. oklahomensis* (c6786, c7532 and c7533), *B. thailandensis* (E175, E264, E421 and E426), *B. ubonensis* (DMST866) and *B. vietnamiensis* (LMG6999). The five *B. pseudomallei* isolates were selected as these have been used extensively as reference isolates, and whole genome sequence and sequence type (ST) data are available (K96243, ST10; H2660a, ST 54;

H2708a, ST60; 1106a, ST70; and 1026b, ST102). These STs also represent the major *B. pseudomallei* STs in Thailand [37]. *B. mallei* evolved from a single lineage of *B. pseudomallei* and the two isolates selected here (NCTC 10247 and Mongolia 1) were used previously as reference isolates in a study that described the discrimination between *B. mallei* and *B. pseudomallei* [25]. *B. ubonensis*, *B. oklahomensis*, *B. humptydoensis* and *B. vietnamiensis* are rarely described and all isolates belonging to these species in our collection were used. *B. cepacia*, *B. multivorans* and *B. thailandensis* were added since they may be misidentified as *B. pseudomallei* by some identification systems.

Identification of specific peaks for the discrimination of *Burkholderia* species

The Clinprotools software (version 3, Bruker Daltonics, Germany) was used to identify peaks that discriminated between *Burkholderia* species. This was performed using 20 replicates of a single protein preparation from each of nine *Burkholderia* species and *B. thailandensis* with Bp-like CPS: *B. multivorans* LMG16660, *B. ubonensis* DMST866, *B. vietnamiensis* LMG6999, *B. cepacia* NCTC 10744, *B. oklahomensis* c7533, *B. thailandensis* E264, *B. thailandensis* (Bp-like CPS) E555, *B. humptydoensis* MSMB43, *B. pseudomallei* K96243, and *B. mallei* NCTC 3708. Three independent experiments (20 replicates for each experiment) were performed and the results of each experiment checked for consistency of the discriminating peaks.

The statistical algorithms incorporated in the Clinprotools software (Quick Classifier (QC)/Different Average, Supervised Neural Network (SNN) and the Genetic Algorithm (GA)) were used to analyze protein peaks between 2,000 and 20,000 Da. Potentially discriminatory peaks were identified based on high reliable prediction and separation based on cross validation values (>90%), as described previously [30]. Three statistical tests (Anderson-Darling (AD), t-test/ANOVA (TTA), and Wilcoxon/Kruskal-Wallis (W/KW)) are incorporated into Clinprotools and were used to analyse intensity data. All discriminatory peaks that exhibited P-values of <0.01 by any of these statistical test were further evaluated by eye [41] and validated with the peaks of other isolates from the same species. Peaks that were unique to specific species or statistically different in intensity and showed consistent results from three independent experiments were considered as the discriminatory peaks. All *Burkholderia* isolates used for the identification of discriminating peaks were used for the construction of a dendrogram.

MALDI-TOF MS dendrogram

To construct the dendrogram, Flexanalysis software (version 3.4) was used to adjust the baseline and smoothness of the spectra. Twenty spots of a single protein extract for each isolate were used to construct the main spectrum profiles (MSP) using the MALDI-Biotyper software (version 3.1). The following parameters were used: the Biotyper MSP creation standard method was used, with a maximum mass error of each single spectrum of 2000, desired mass error for the MSP of 200, desired peak frequency minimum of 25%, and maximum desired peak number for the MSP of 70. The isolates used were: 21 *B. pseudomallei* (NR9921, 1710a, 1106a, 576a, 1026b, K96243, SBPTHE0359, H2659A, SBPTHE0024, H2660a, SBPTHE0411, H2613a, SBPTHE0031, H2820a, SBPTHE0383, H2708a, H1248a, SBPTHE0358, H2677a, H2689b, H2644a), 21 *B. mallei* (EY100, NCTC 10245, T1, T2, T3, EY2233, EY2235, EY2236, EY2237, EY2238, EY2239, NCTC 10229, NCTC 10248, NCTC 3708, NCTC 10230, NCTC 10260, NCTC 3709, NCTC 10247, Mongolia1, Mongolia 2, ATCC 23344), 10 *B. thailandensis* (E175, E264, E421, E426, E555, SBXPL007a, SBXCC006a, SBXCC001, SBXCB001, SBXPR001), 1 *B. humptydoensis* MSMB43, 3 *B. oklahomensis* (c6786, c7532, c7533), 8 *B. cepacia* (NCTC 10744, MI1035, LNT40, 2.1B, U668, 39628, 10223, SBCAU015), 1 *B. vietnamiensis*

LMG6999, 1 *B. ubonensis* DMST866 and 1 *B. multivorans* LMG16660. The basis for the choice of *B. pseudomallei* isolates was the inclusion of commonly used reference isolates (K96243, H2660a, H2708a, 1106a and 1026b) and a further 16 isolates each assigned to a different ST (ST696, ST76, ST77, ST80, ST345, ST40, ST126, ST177, ST70, ST501, ST102, ST10, ST54 and ST60 (Fig 1). *B. thailandensis* and *B. thailandensis* with BP-like CPS capsule were randomly selected from our freezer archive. We included all of the *B. mallei* (N = 21), *B. humptydoensis* MSMB43 (N = 1), *B. oklahomensis* (N = 3), *B. cepacia* (N = 8), *B. vietnamiensis* (N = 1), *B. ubonensis* (N = 1) and *B. multivorans* (N = 1) in our collection. Cluster analysis was performed based on comparison of MSP using the following setting parameters: the distance measure was set to Spearman, the linkage was set to single, and score threshold value for a single organism was set at 1000.

Determination of minimum bacterial input for accuracy of MALDI-TOF

The minimum number of bacteria in suspension and minimum number of colonies required to achieve an accurate MALDI-TOF result were determined. To quantify the number of bacteria, the experiment was performed using bacterial suspension. *B. pseudomallei* K96243 was harvested from an overnight culture of Columbia agar, suspended in sterile saline, adjusted to approximately 1×10^7 CFU/ml and then serially diluted from 1×10^7 CFU/ml to 10 CFU/ml. Bacterial cells in 1 ml of each dilution were harvested by centrifugation at 16,200 g for 2 min. Protein was extracted from each pellet prior to MALDI-TOF analysis as above. The bacterial count was confirmed using Columbia agar spread plates in triplicate and colony counts after overnight incubation at 37°C. To determine the minimum number of colonies required for MALDI-TOF, between 1 and 10 colonies (size ~1 mm) of *B. pseudomallei* K96243 were harvested from Columbia agar plates using a loop, suspended in UDW and the protein extracted from each. Extracts were analyzed in triplicate in both assays. Spectra with maximal absolute peak intensities ranging from 10^3 to 10^4 arbitrary units were considered for evaluation [42, 43].

Effect of culture media

The effect of culture media was examined for five *B. pseudomallei* isolates (K96243, NR9921, 1106a, 1026b and 576a). Bacteria were streaked onto Ashdown agar, blood agar, Columbia agar, chocolate agar, Luria-Bertani (LB) agar, MacConkey agar, Mueller-Hinton agar, trypticase soy agar and incubated at 37°C in air for 24 hours and harvested using a 1 µl loop (≥ 10 colonies, size ~1 mm). Bacteria were suspended in 300 µl UDW and the protein extracted and analyzed in triplicate using MALDI-TOF MS.

MALDI-TOF MS identification of *B. pseudomallei* in spiked blood culture

Three BACTEC Plus Aerobic/F bottles were each inoculated with 10 ml of whole blood drawn from a single healthy volunteer. An overnight culture of *B. pseudomallei* K96243 was adjusted to approximately 1×10^8 CFU/ml, serially diluted to a concentration of 100 CFU/ml, and 100 µl (10 CFU) inoculated into each bottle. The inoculum was confirmed using colony counts on agar plates. Bottles were incubated at 37°C with 200 rpm shaking. At 12, 16, 20 and 24 h after incubation, one ml from each bottle was withdrawn for protein extraction using ammonium 0.826% NH_4Cl (W/V) as a lysis buffer, as described previously [44, 45] with modifications. Briefly, an equal volume of 0.826% NH_4Cl was added to 1 ml of blood culture fluid, mixed and centrifuged at 16,200 g for 2 min. The pellet was lysed twice as above before washing twice with 1 ml ultrapure distilled water and centrifuged as before. The supernatant was discarded and the pellet used for protein extraction.

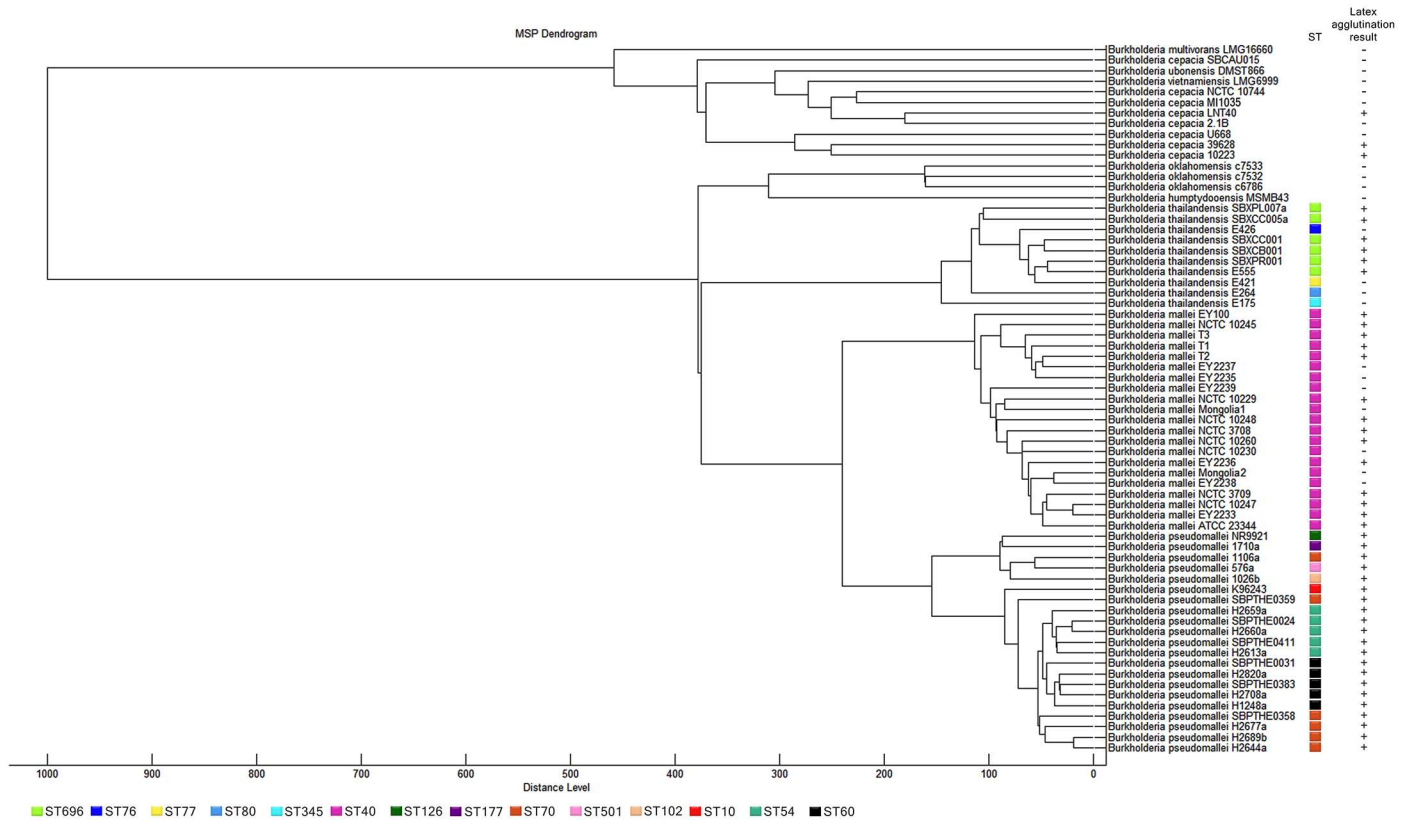


Fig 1. Phylogenetic tree of protein profiles of *B. pseudomallei* and 8 other genetically related *Burkholderia* species. Distance is displayed in relative units. Annotated with MLST sequence type (ST) where known; each color represents a ST. The latex agglutination test was based on a monoclonal that recognizes *B. pseudomallei* capsular polysaccharide.

<https://doi.org/10.1371/journal.pone.0175294.g001>

RecA sequencing

recA sequencing and phylogenetic analysis was performed as previously described [20]. The isolates tested were *B. pseudomallei* (N = 6), *B. mallei* (N = 7), *B. thailandensis* (N = 2), *B. thailandensis* variant strains with Bp-like CPS (N = 1), *B. ubonensis* (N = 1), *B. oklahomensis* (N = 1), *B. vietnamiensis* (N = 1), *B. cepacia* (N = 5), *B. humptydoensis* (N = 1) and *B. multivorans* (N = 1). Genomic DNA was extracted and PCR amplification performed using BUR3, BUR4 and BUR5 primers as previously described [20]. Products were visualized using agarose-gel electrophoresis and purified using ExoSAP-IT PCR Product Cleanup (Affymetrix UK Ltd., UK). Purified PCR products were sequenced by Macrogen Inc. (Korea). Nucleotide sequence of *B. thailandensis* E555 was obtained from the NCBI database (accession no. AECN01000010.1). All sequences were aligned and trimmed to a 348 bp region using Clustal W using MEGA software version 7 [46]. A maximum likelihood tree was constructed using the Nearest-Neighbor-Interchange (NNI) and Tamura-Nei model [47] using MEGA software version 7.0.14 [46].

Ethical approval

The study was approved by Ethics Committee of the Faculty of Tropical Medicine, Mahidol University (approval number MUTM 2016-034-01). The principal investigator's blood was

used and verbal consent was obtained to participate in this study. The Ethics Committee of the Faculty of Tropical Medicine, Mahidol University approved the procedure.

Results

Evaluation of MALDI-TOF MS for the identification of *B. pseudomallei*

Twenty replicates of *B. pseudomallei* K96243 were tested using MALDI-TOF MS and the Bruker Daltonics database version 3.3.1.0. These were all identified as *B. thailandensis*, with a median score below that for reliable species identification (median 1.96, range, 1.83–2.04). We noted that the Biotyper database did not contain *B. pseudomallei*, *B. mallei*, *B. ubonensis*, *B. oklahomensis* or *B. humptydooensis*, although did contain representation for 30 *Burkholderia* species (*B. ambifaria* (N = 2), *B. andropogonis* (N = 1), *B. anthina* (N = 2), *B. caledonica* (N = 1), *B. caribensis* (N = 1), *B. cenocepacia* (N = 2), *B. cepacia* (N = 9), *B. diffusa* (N = 1), *B. dolosa* (N = 1), *B. fungorum* (N = 1), *B. gladioli* (N = 5), *B. glathei* (N = 1), *B. glumae* (N = 1), *B. lata* (N = 1), *B. latens* (N = 1), *B. metallica* (N = 1), *B. multivorans* (N = 5), *B. phenazinium* (N = 1), *B. phymatum* (N = 1), *B. plantarii* (N = 1), *B. pyrrocinia* (N = 2), *B. sacchari* (N = 1), *B. seminalis* (N = 2), *B. stabilis* (N = 2), *B. terricola* (N = 1), *B. tropica* (N = 1), *B. tuberum* (N = 1), *B. thailandensis* (N = 1), *B. vietnamiensis* (N = 1) and *B. xenovorans* (N = 1)). We extended the database by adding reference profiles for *B. pseudomallei* (N = 5), *B. mallei* (N = 2), *B. ubonensis* (N = 1), *B. oklahomensis* (N = 3) and *B. humptydooensis* (N = 1), together with further examples of *B. cepacia* (N = 8), *B. thailandensis* (N = 4), *B. multivorans* (N = 1), and *B. vietnamiensis* (N = 1). We then tested the accuracy of MALDI-TOF MS for the identification of geographically and genetically diverse *B. pseudomallei* isolates. A large collection of 564 clinical and 17 environmental isolates from different locations in Thailand, and from Laos, Cambodia, Hong Kong and Australia was tested. MALDI-TOF identified all 581 *B. pseudomallei* isolates correctly (100% sensitivity), with a median score for all isolates of 2.49 (range 2.30–2.68, IQR, 2.43–2.54) and no misidentification at the species level (Table 2). *B. pseudomallei* isolates showed some variability in similarity scores against the 5 *B. pseudomallei* added here to the reference profiles. Despite this, the highest score was to *B. pseudomallei* for all 581 *B. pseudomallei* tested, with the second and third highest score being *B. mallei* (median score 2.21, range 1.68–2.46, IQR 2.14–2.29) and *B. thailandensis* (median score 2.01, range 1.62–2.22, IQR 1.95–2.06). The specificity of MALDI-TOF MS was evaluated by testing 25 isolates including *B. mallei* (N = 19), *B. thailandensis* (N = 6), and 23 isolates belonging to 21 species in other Genera (see Methods). These bacterial species were correctly identified, indicating 100% specificity.

Effect of culture media on MALDI-TOF MS identification

We evaluated whether the culture medium used to grow bacteria prior to MALDI-TOF MS affected the accuracy of identification. Five *B. pseudomallei* strains (NR9921, 1106a, 576a, K96243, 1026b) were grown overnight on eight different solid media. All isolate/media combinations were identified as *B. pseudomallei*, with an identification score of at least 2.45. The median scores (range) of five isolates were as follows: Ashdown agar, 2.59 (2.48–2.68); blood agar, 2.66 (2.49–2.75); Columbia agar, 2.65 (2.59–2.69); chocolate agar, 2.64 (2.48–2.67); Luria-Bertani (LB) agar, 2.65 (2.47–2.70); MacConkey agar, 2.59 (2.47–2.62); Mueller-Hinton agar, 2.63 (2.45–2.65); and trypticase soy agar 2.62 (2.49–2.67).

Identification of *B. pseudomallei* in spiked blood culture

Since the speed of identification of *B. pseudomallei* from blood culture is crucial for patient management, we tested whether MALDI-TOF MS would give an accurate identification of *B.*

Table 2. MALDI-TOF scores of *B. pseudomallei* from different geographical origins.

Locations		No. of isolates tested	Range	Median	IQR
Northeast Thailand	Ubon Rachathani	443	2.30–2.68	2.51	2.45–2.55
	Udon Thani	35	2.32–2.52	2.43	2.38–2.46
	Khon Kaen	19	2.34–2.50	2.40	2.37–2.44
	Nakhon Phanom	19	2.33–2.53	2.44	2.38–2.48
East Thailand	Chachoengsao	8	2.34–2.49	2.39	2.35–2.42
Laos		12	2.46–2.66	2.52	2.48–2.60
Cambodia		14	2.35–2.57	2.47	2.44–2.50
Hong Kong		4	2.56–2.58	2.56	2.56–2.57
Australia		27	2.32–2.58	2.42	2.38–2.44
All isolates		581	2.30–2.68	2.49	2.43–2.54

<https://doi.org/10.1371/journal.pone.0175294.t002>

pseudomallei K96243 in spiked blood culture fluid. For this we used three 30 ml BACTEC Plus Aerobic/F blood culture bottles each containing 10ml of blood from a healthy volunteer, spiked with 10 CFU, and tested after 8, 10, 12 and 24 h of incubation at 37°C with shaking. Testing at 8, 10, 12 h showed unidentified or misidentified results, but accurate identification for *B. pseudomallei* was obtained at the 24 h time point (median identification score 2.25 (range 2.17–2.36)). Colony counting demonstrated that the bacterial concentration in the blood culture bottle fluid at 24 h was 2.1×10^9 CFU/ml.

Latex agglutination test

The latex agglutination test is used to rapidly identify *B. pseudomallei* colonies in our laboratory and elsewhere, and so we performed a comparative assessment of this versus MALDI-TOF MS. The isolates used were 21 *B. pseudomallei*, 21 *B. mallei*, 10 *B. thailandensis*, 3 *B. oklahomensis*, 8 *B. cepacia*, 1 *B. vietnamiensis*, 1 *B. ubonensis* and 1 *B. multivorans*. All *B. pseudomallei* were positive by latex agglutination (Fig 1), as well as all *B. thailandensis* variants expressing Bp-like CPS, some strains of *B. mallei* (14/21, 66.7%), and three strains of *B. cepacia* (LNT40, 39628 and 10223) which had previously given false-positive results (D. Dance, personal communication).

Identification of discriminatory peaks

Twenty discriminatory peaks were identified from MSP spectra of representative isolates from 9 *Burkholderia* species and *B. thailandensis* with Bp-like CPS with cross validation results ranging between 98% and 100% (Fig 2 and S1 Table). Three peaks (around 2,600 Da, 4,414 Da and 5,200 Da) were observed for all nine *Burkholderia* species. Peaks that were unique to specific species were also observed, for example 2,908 Da for *B. ubonensis*, 3,932 Da for *B. vietnamiensis*, and 5,835 Da for *B. thailandensis* with Bp-like CPS. The only difference between *B. thailandensis* and *B. thailandensis* with Bp-like CPS was a peak of 5,835 Da. Compared to other *Burkholderia* species, peaks with highest intensity that were statistically different ($P < 0.001$) and useful to differentiate species were 2,049 Da for *B. humptydoensis*, 5,797 for *B. pseudomallei*, 7,558 Da for *B. mallei* and 7,859 Da for *B. vietnamiensis*. We checked these peaks with other isolates [*B. pseudomallei* (N = 21), *B. mallei* (N = 21), *B. thailandensis* (N = 4), *B. thailandensis* with Bp-like CPS (N = 6), *B. oklahomensis* (N = 3), *B. cepacia* (N = 8)] and found them to be reproducible in other isolates of the same species.

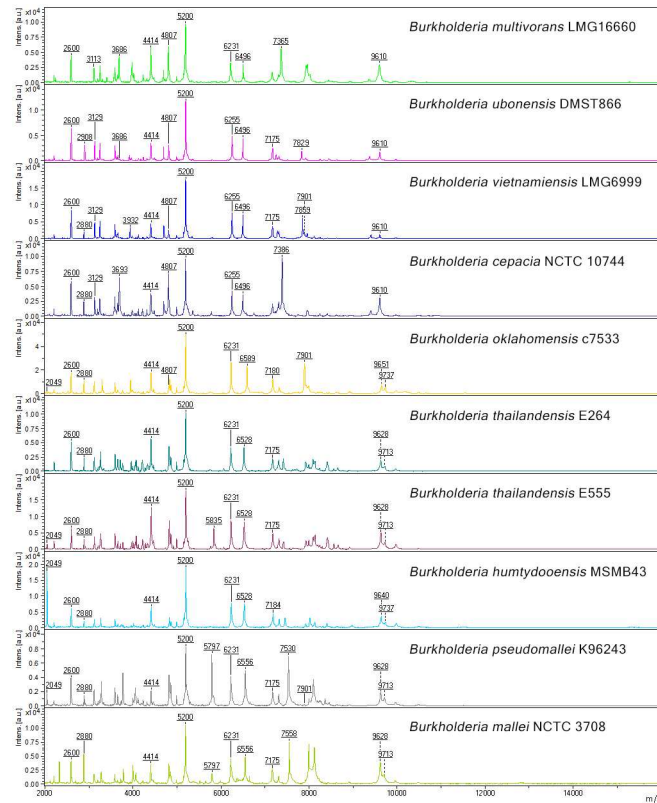


Fig 2. MALDI-TOF mass protein spectra of *B. pseudomallei* and 8 other genetically related *Burkholderia* species. The vertical axis shows relative intensities of ions and the horizontal axis shows mass to charge ratio (m/z) or masses of ions (Da).

<https://doi.org/10.1371/journal.pone.0175294.g002>

Phylogeny based on MALDI-TOF MS protein profiles and *recA*

A phylogenetic tree based on the MSP of 67 *Burkholderia* isolates divided nine species into two major branches (Fig 1). The first contained *B. multivorans*, *B. vietnamiensis*, *B. ubonensis* and *B. cepacia*, and the second contained *B. thailandensis*, *B. oklahomensis*, *B. humptydoensis*, *B. mallei* and *B. pseudomallei*. *B. pseudomallei* and *B. mallei* resided in distinct lineages but were more related to each other than to *B. thailandensis*. Sequence types had been defined previously for the *B. mallei* and *B. pseudomallei* isolates [36, 37] and are shown in Fig 1. *B. mallei* isolates belonged to a single ST (ST40), while *B. pseudomallei* belonged to 8 different STs.

A phylogenetic tree based on *recA* sequence was compared with the MALDI-TOF dendrogram for 26 isolates representing nine *Burkholderia* species (Fig 3). This demonstrated a broadly similar structure between the two, with distribution of the species between two major divisions. A notable difference was that MS distinguished between *B. pseudomallei* and *B. mallei*, while the *recA* tree did not.

Discussion

MALDI-TOF MS is increasingly used for bacterial identification in diagnostic microbiology laboratories. This technology can reduce time of identification since bacteria are sampled directly from bacterial colonies and the test takes around 30 minutes to perform. The rapid microbiological diagnosis of melioidosis is essential because clinical features are non-specific, empiric drug regimens are sub-optimal, and infection is often fatal without appropriate

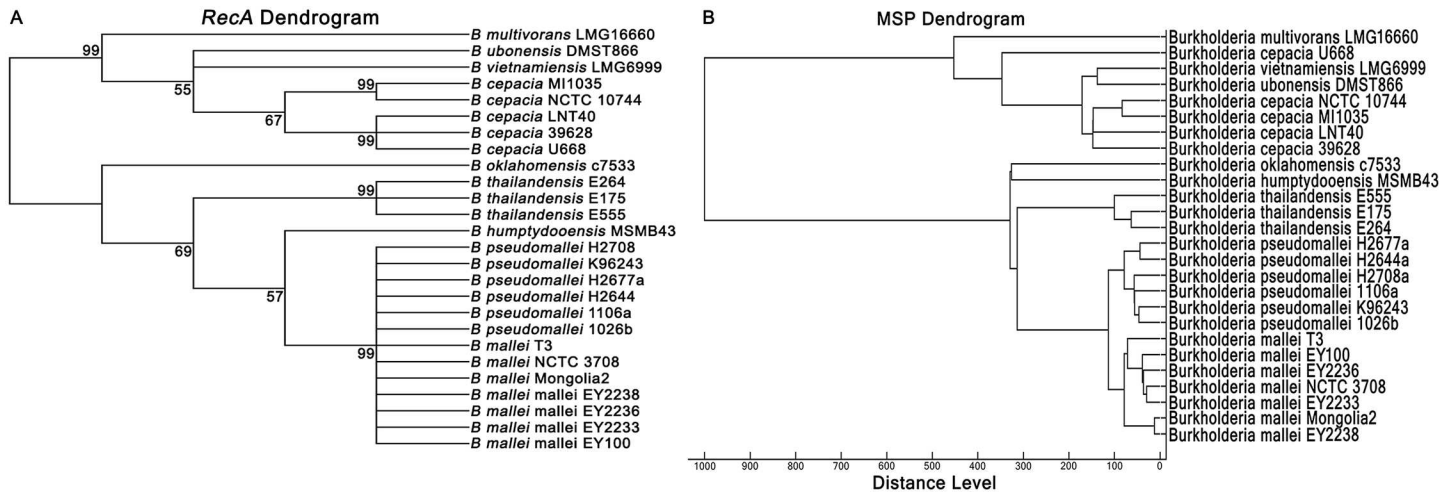


Fig 3. Comparison of *recA* sequence dendrogram (A) and protein profile dendrogram (B) of *B. pseudomallei* and 8 other genetically related *Burkholderia* species.

<https://doi.org/10.1371/journal.pone.0175294.g003>

treatment. This is compounded by the fact that healthcare providers in non-endemic countries may not readily recognize melioidosis. MALDI-TOF MS could also be used for environmental surveys looking at the distribution and presence of *B. pseudomallei* and related species.

Our findings confirm that MALDI-TOF MS can accurately identify *B. pseudomallei* regardless of geographic origin, and was able to reliably distinguish between this, other *Burkholderia* spp. and a range of other common pathogens, provided that the database is suitably modified. Since the top hit identification for each tested *B. pseudomallei* isolates could be any of five *B. pseudomallei* isolates in our reference database, we recommended laboratories that wish to identify *B. pseudomallei* using this method to extend the database by adding reference profiles of all five *B. pseudomallei* isolates. Diagnostic laboratories use a range of culture media, but we demonstrated that this has no effect on the performance of the test. We also showed that MALDI-TOF MS accurately identifies *B. pseudomallei* in blood cultures, which could reduce the time taken to diagnostic confirmation and appropriate antimicrobial treatment. Our results confirm a previous report in which MALDI-TOF was used to identify *B. pseudomallei* from blood cultures from two septicemic patients in Australia [29]. The simulated blood culture experiment in which 10 CFU was used as the starting inoculum reflects the bacterial load in blood during human infection, which has been reported previously to be a median count of 1.1 CFU/ml [48]. Our observation that identification of *B. pseudomallei* by MALDI-TOF was not accurate until after an incubation period of 24 hours implies that in clinical practice, this method will be effective on bottles that have flagged in an automated incubation system or after 24 hours or more of incubation.

The Clinprotocols software used to support the interpretation of MALDI-TOF MS identifies species-specific peaks as the basis for species identification [30, 41, 49]. In agreement with previous studies [25, 30], we identified specific peaks at 4,410, 5,794, 6,551, 7,553 and 9,713 Da for all *B. pseudomallei* isolates tested. We also observed specific peaks for *B. ubonensis* (2,908 Da), *B. vietnamiensis* (3,932 Da) and *B. thailandensis* variants expressing Bp-like CPS (5,835 Da). The peak at 2,049 Da may be used to differentiate between *B. pseudomallei* and *B. mallei* because this was present in all *B. pseudomallei* isolates but not in any *B. mallei* isolates. We also noted several peaks which displayed significantly higher peak intensities in specific species, which may be useful for the discrimination of *B. humptydoensis* (2,049 Da), *B. multivorans*

(3,686 Da), *B. pseudomallei* (5,797 Da), *B. oklahomensis* (6,589 and 7,901 Da) and *B. vietnamiensis* (7,859 Da).

Latex agglutination is a sensitive screening test for suspected *B. pseudomallei*, but positive latex agglutination results have been described previously for *B. mallei*, *B. thailandensis* with Bp-like CPS, *S. aureus* [11, 35, 50] and some strains of *B. cepacia* (unpublished data), potentially leading to confusion in diagnostic laboratories if used alone. This study shows that MALDI-TOF MS can be used to reliably distinguish between these organisms. Furthermore, both MSP and *recA* dendrograms confirmed that *B. pseudomallei*, *B. mallei* and *B. thailandensis* were arranged in the same phylogenetic group.

In conclusion, MALDI-TOF MS is an accurate and discriminatory tool for the identification of *B. pseudomallei* if sufficient MSPs are added in the Biotyper database. MALDI-TOF MS could be used to increase the rapid detection of cases of melioidosis in the clinical setting, and reduce time to appropriate antimicrobial therapy.

Supporting information

S1 Table. Differentiating peaks of nine *Burkholderia* species. Peaks were based on analysis using Clinprotocols software.
(PDF)

Acknowledgments

We gratefully acknowledge staff at Sunpasitthiprasong hospital, Nakhon Phanom hospital, Khon Kaen hospital, Udon Thani hospital, Budhasothorn Hospital, Mahidol-Oxford Tropical Medicine Research Unit (MORU), the Department of Microbiology and Immunology, Faculty of Tropical Medicine, Mahidol University and the Microbiology Laboratory and wards of Mahosot Hospital. We thank Tsedev Ulziitogtokh and Erhan Akcay for providing bacterial isolates. We thank Suporn Paksanont, Sarunporn Tandhavanant, Premjit Amornchai, Rungnapa Punphang, Chakkaphan Runcharoen, Manivanh Vongsouvath, Viengmon Davong, Mayfong Mayxay and Paul Newton for their assistance.

Author Contributions

Conceptualization: VS NC.

Data curation: VS NC.

Formal analysis: VS NC.

Funding acquisition: NC.

Investigation: VS AP PE NC.

Methodology: VS NC.

Project administration: NC.

Resources: PE VW MGE PT BJC RP DD DL NC.

Software: VS.

Supervision: NC SJP.

Validation: VS.

Visualization: SJP NC.

Writing – original draft: NC.

Writing – review & editing: VS AP PE VW MGE PT BJC DD DL SJP NC.

References

1. Limmathurotsakul D, Golding N, Dance DA, Messina JP, Pigott DM, Moyes CL, et al. Predicted global distribution of and burden of melioidosis. *Nat Microbiol*. 2016; 1(1). <https://doi.org/10.1038/nmicrobiol.2015.8> PMID: 26877885
2. Kanoksil M, Jatapai A, Peacock SJ, Limmathurotsakul D. Epidemiology, microbiology and mortality associated with community-acquired bacteremia in northeast Thailand: a multicenter surveillance study. *PLoS One*. 2013; 8(1):e54714. <https://doi.org/10.1371/journal.pone.0054714> PMID: 23349954
3. Wiersinga WJ, Currie BJ, Peacock SJ. Melioidosis. *N Engl J Med*. 2012; 367(11):1035–44. <https://doi.org/10.1056/NEJMr1204699> PMID: 22970946
4. Saidani N, Griffiths K, Million M, Gautret P, Dubourg G, Parola P, et al. Melioidosis as a travel-associated infection: Case report and review of the literature. *Travel Med Infect Dis*. 2015; 13(5):367–81. <https://doi.org/10.1016/j.tmaid.2015.08.007> PMID: 26385170
5. Jang HR, Lee CW, Ok SJ, Kim MJ, Bae MJ, Song S, et al. Melioidosis presenting as a mycotic aneurysm in a Korean patient, diagnosed by 16S rRNA sequencing and matrix-assisted laser desorption/ionization time-of-flight mass spectrometry. *Int J Infect Dis*. 2015; 38:62–4. <https://doi.org/10.1016/j.ijid.2015.07.012> PMID: 26216763
6. Thaipadungpanit J, Chierakul W, Pattanapokrattana W, Phoodaeng A, Wongsuvan G, Huntrakun V, et al. *Burkholderia pseudomallei* in water supplies, southern Thailand. *Emerg Infect Dis*. 2014; 20(11):1947–9. <https://doi.org/10.3201/eid2011.140832> PMID: 25340393
7. Chantratita N, Wuthiekanun V, Limmathurotsakul D, Vesaratchavest M, Thanwisai A, Amornchai P, et al. Genetic diversity and microevolution of *Burkholderia pseudomallei* in the environment. *PLoS Negl Trop Dis*. 2008; 2(2):e182. <https://doi.org/10.1371/journal.pntd.0000182> PMID: 18299706
8. Wuthiekanun V, Limmathurotsakul D, Chantratita N, Feil EJ, Day NP, Peacock SJ. *Burkholderia pseudomallei* is genetically diverse in agricultural land in Northeast Thailand. *PLoS Negl Trop Dis*. 2009; 3(8):e496. <https://doi.org/10.1371/journal.pntd.0000496> PMID: 19652701
9. Glass MB, Gee JE, Steigerwalt AG, Cavuoti D, Barton T, Hardy RD, et al. Pneumonia and septicemia caused by *Burkholderia thailandensis* in the United States. *J Clin Microbiol*. 2006; 44(12):4601–4. <https://doi.org/10.1128/JCM.01585-06> PMID: 17050819
10. Chantratita N, Tandhavanant S, Wongsuvan G, Wuthiekanun V, Teerawattanasook N, Day NP, et al. Rapid detection of *Burkholderia pseudomallei* in blood cultures using a monoclonal antibody-based immunofluorescent assay. *Am J Trop Med Hyg*. 2013; 89(5):971–2. <https://doi.org/10.4269/ajtmh.13-0212> PMID: 24019434
11. Anuntagool N, Naigowit P, Petkanchanapong V, Aramsri P, Panichakul T, Sirisinha S. Monoclonal antibody-based rapid identification of *Burkholderia pseudomallei* in blood culture fluid from patients with community-acquired septicaemia. *J Med Microbiol*. 2000; 49(12):1075–8. <https://doi.org/10.1099/0022-1317-49-12-1075> PMID: 11129718
12. Houghton RL, Reed DE, Hubbard MA, Dillon MJ, Chen H, Currie BJ, et al. Development of a prototype lateral flow immunoassay (LFI) for the rapid diagnosis of melioidosis. *PLoS Negl Trop Dis*. 2014; 8(3):e2727. <https://doi.org/10.1371/journal.pntd.0002727> PMID: 24651568
13. Sim BM, Chantratita N, Ooi WF, Nandi T, Tewhey R, Wuthiekanun V, et al. Genomic acquisition of a capsular polysaccharide virulence cluster by non-pathogenic *Burkholderia* isolates. *Genome Biol*. 2010; 11(8):R89. <https://doi.org/10.1186/gb-2010-11-8-r89> PMID: 20799932
14. Chantratita N, Wuthiekanun V, Limmathurotsakul D, Thanwisai A, Chantratita W, Day NP, et al. Prospective clinical evaluation of the accuracy of 16S rRNA real-time PCR assay for the diagnosis of melioidosis. *Am J Trop Med Hyg*. 2007; 77(5):814–7. PMID: 17984332
15. Chantratita N, Meumann E, Thanwisai A, Limmathurotsakul D, Wuthiekanun V, Wannapasni S, et al. Loop-mediated isothermal amplification method targeting the TTS1 gene cluster for detection of *Burkholderia pseudomallei* and diagnosis of melioidosis. *J Clin Microbiol*. 2008; 46(2):568–73. <https://doi.org/10.1128/JCM.01817-07> PMID: 18039797
16. Smith MD, Angus BJ, Wuthiekanun V, White NJ. Arabinose assimilation defines a nonvirulent biotype of *Burkholderia pseudomallei*. *Infect Immun*. 1997; 65(10):4319–21. PMID: 9317042
17. Novak RT, Glass MB, Gee JE, Gal D, Mayo MJ, Currie BJ, et al. Development and evaluation of a real-time PCR assay targeting the type III secretion system of *Burkholderia pseudomallei*. *J Clin Microbiol*. 2006; 44(1):85–90. <https://doi.org/10.1128/JCM.44.1.85-90.2006> PMID: 16390953

18. Meumann EM, Novak RT, Gal D, Kaestli ME, Mayo M, Hanson JP, et al. Clinical evaluation of a type III secretion system real-time PCR assay for diagnosing melioidosis. *J Clin Microbiol.* 2006; 44(8):3028–30. <https://doi.org/10.1128/JCM.00913-06> PMID: 16891534
19. Gee JE, Sacchi CT, Glass MB, De BK, Weyant RS, Levett PN, et al. Use of 16S rRNA gene sequencing for rapid identification and differentiation of *Burkholderia pseudomallei* and *B. mallei*. *J Clin Microbiol.* 2003; 41(10):4647–54. <https://doi.org/10.1128/JCM.41.10.4647-4654.2003> PMID: 14532197
20. Ginther JL, Mayo M, Warrington SD, Kaestli M, Mullins T, Wagner DM, et al. Identification of *Burkholderia pseudomallei* Near-Neighbor Species in the Northern Territory of Australia. *PLoS Negl Trop Dis.* 2015; 9(6):e0003892. <https://doi.org/10.1371/journal.pntd.0003892> PMID: 26121041
21. Koh TH, Yong Ng LS, Foon Ho JL, Sng LH, Wang GC, Tzer Pin Lin RV. Automated identification systems and *Burkholderia pseudomallei*. *J Clin Microbiol.* 2003; 41(4):1809. <https://doi.org/10.1128/JCM.41.4.1809.2003> PMID: 12682195
22. Lowe P, Engler C, Norton R. Comparison of automated and nonautomated systems for identification of *Burkholderia pseudomallei*. *J Clin Microbiol.* 2002; 40(12):4625–7. <https://doi.org/10.1128/JCM.40.12.4625-4627.2002> PMID: 12454163
23. Lowe P, Haswell H, Lewis K. Use of various common isolation media to evaluate the new VITEK 2 colorimetric GN Card for identification of *Burkholderia pseudomallei*. *J Clin Microbiol.* 2006; 44(3):854–6. <https://doi.org/10.1128/JCM.44.3.854-856.2006> PMID: 16517866
24. Zong Z, Wang X, Deng Y, Zhou T. Misidentification of *Burkholderia pseudomallei* as *Burkholderia cepacia* by the VITEK 2 system. *J Med Microbiol.* 2012; 61(Pt 10):1483–4. <https://doi.org/10.1099/jmm.0.041525-0> PMID: 22820689
25. Karger A, Stock R, Ziller M, Elschner MC, Bettin B, Melzer F, et al. Rapid identification of *Burkholderia mallei* and *Burkholderia pseudomallei* by intact cell Matrix-assisted Laser Desorption/Ionisation mass spectrometric typing. *BMC Microbiol.* 2012; 12:229. <https://doi.org/10.1186/1471-2180-12-229> PMID: 23046611
26. Elschner MC, Hnizdo J, Stamm I, El-Adawy H, Mertens K, Melzer F. Isolation of the highly pathogenic and zoonotic agent *Burkholderia pseudomallei* from a pet green Iguana in Prague, Czech Republic. *BMC Vet Res.* 2014; 10:283. <https://doi.org/10.1186/s12917-014-0283-7> PMID: 25430942
27. Walewski V, Mechai F, Billard-Pomares T, Juguet W, Jaureguy F, Picard B, et al. MALDI-TOF MS contribution to diagnosis of melioidosis in a nonendemic country in three French travellers. *New Microbes New Infect.* 2016; 12:31–4. <https://doi.org/10.1016/j.nmni.2016.04.004> PMID: 27222715
28. Dingle TC, Butler-Wu SM, Abbott AN. Accidental exposure to *Burkholderia pseudomallei* in the laboratory in the era of matrix-assisted laser desorption ionization-time of flight mass spectrometry. *J Clin Microbiol.* 2014; 52(9):3490–1. <https://doi.org/10.1128/JCM.01238-14> PMID: 24920780
29. Inglis TJ, Healy PE, Fremlin LJ, Gollledge CL. Use of matrix-assisted laser desorption/ionization time-of-flight mass spectrometry analysis for rapid confirmation of *Burkholderia pseudomallei* in septicemic melioidosis. *Am J Trop Med Hyg.* 2012; 86(6):1039–42. <https://doi.org/10.4269/ajtmh.2012.11-0454> PMID: 22665614
30. Niyompanich S, Srisanga K, Jaresitthikunchai J, Roytrakul S, Tungpradabkul S. Utilization of Whole-Cell MALDI-TOF Mass Spectrometry to Differentiate *Burkholderia pseudomallei* Wild-Type and Constructed Mutants. *PLoS One.* 2015; 10(12):e0144128. <https://doi.org/10.1371/journal.pone.0144128> PMID: 26656930
31. Niyompanich S, Jaresitthikunchai J, Srisanga K, Roytrakul S, Tungpradabkul S. Source-identifying biomarker ions between environmental and clinical *Burkholderia pseudomallei* using whole-cell matrix-assisted laser desorption/ionization time-of-flight mass spectrometry (MALDI-TOF MS). *PLoS One.* 2014; 9(6):e99160. <https://doi.org/10.1371/journal.pone.0099160> PMID: 24914956
32. Cox CR, Saichek NR, Schweizer HP, Voorhees KJ. Rapid *Burkholderia pseudomallei* identification and antibiotic resistance determination by bacteriophage amplification and MALDI-TOF MS. *Bacteriophage.* 2014; 4:e29011. <https://doi.org/10.4161/bact.29011> PMID: 25050191
33. Lasch P, Wahab T, Weil S, Palyi B, Tomaso H, Zange S, et al. Identification of Highly Pathogenic Microorganisms by Matrix-Assisted Laser Desorption Ionization-Time of Flight Mass Spectrometry: Results of an Interlaboratory Ring Trial. *J Clin Microbiol.* 2015; 53(8):2632–40. <https://doi.org/10.1128/JCM.00813-15> PMID: 26063856
34. Wang H, Chen YL, Teng SH, Xu ZP, Xu YC, Hsueh PR. Evaluation of the Bruker Biotyper Matrix-Assisted Laser Desorption/Ionization Time-of-Flight Mass Spectrometry System for Identification of Clinical and Environmental Isolates of *Burkholderia pseudomallei*. *Front Microbiol.* 2016; 7:415. <https://doi.org/10.3389/fmicb.2016.00415> PMID: 27092108
35. Duval BD, Elrod MG, Gee JE, Chantratita N, Tandhavanant S, Limmathurotsakul D, et al. Evaluation of a latex agglutination assay for the identification of *Burkholderia pseudomallei* and *Burkholderia mallei*. *Am J Trop Med Hyg.* 2014; 90(6):1043–6. <https://doi.org/10.4269/ajtmh.14-0025> PMID: 24710616

36. Chantratita N, Vesaratchavest M, Wuthiekanun V, Tiyawisuttri R, Ulziitogtokh T, Akcay E, et al. Pulsed-field gel electrophoresis as a discriminatory typing technique for the biothreat agent *Burkholderia mallei*. *Am J Trop Med Hyg*. 2006; 74(3):345–7. PMID: [16525089](#)
37. Vesaratchavest M, Tumapa S, Day NP, Wuthiekanun V, Chierakul W, Holden MT, et al. Nonrandom distribution of *Burkholderia pseudomallei* clones in relation to geographical location and virulence. *J Clin Microbiol*. 2006; 44(7):2553–7. <https://doi.org/10.1128/JCM.00629-06> PMID: [16825379](#)
38. Ferreira L, Sanchez-Juanes F, Munoz-Bellido JL, Gonzalez-Buitrago JM. Rapid method for direct identification of bacteria in urine and blood culture samples by matrix-assisted laser desorption ionization time-of-flight mass spectrometry: intact cell vs. extraction method. *Clin Microbiol Infect*. 2011; 17(7):1007–12. <https://doi.org/10.1111/j.1469-0691.2010.03339.x> PMID: [20718803](#)
39. Drevinek M, Dresler J, Klimentova J, Pisa L, Hubalek M. Evaluation of sample preparation methods for MALDI-TOF MS identification of highly dangerous bacteria. *Lett Appl Microbiol*. 2012; 55(1):40–6. <https://doi.org/10.1111/j.1472-765X.2012.03255.x> PMID: [22512320](#)
40. Espinal P, Seifert H, Dijkshoorn L, Vila J, Roca I. Rapid and accurate identification of genomic species from the *Acinetobacter baumannii* (Ab) group by MALDI-TOF MS. *Clin Microbiol Infect*. 2012; 18(11):1097–103. <https://doi.org/10.1111/j.1469-0691.2011.03696.x> PMID: [22085042](#)
41. Calderaro A, Gorrini C, Piccolo G, Montecchini S, Buttrini M, Rossi S, et al. Identification of *Borrelia* species after creation of an in-house MALDI-TOF MS database. *PLoS One*. 2014; 9(2):e88895. <https://doi.org/10.1371/journal.pone.0088895> PMID: [24533160](#)
42. Calderaro A, Arcangeletti MC, Rodighiero I, Buttrini M, Montecchini S, Vasile Simone R, et al. Identification of different respiratory viruses, after a cell culture step, by matrix assisted laser desorption/ionization time of flight mass spectrometry (MALDI-TOF MS). *Sci Rep*. 2016; 6:36082. <https://doi.org/10.1038/srep36082> PMID: [27786297](#)
43. Gekenidis MT, Studer P, Wuthrich S, Brunisholz R, Drissner D. Beyond the matrix-assisted laser desorption ionization (MALDI) biotyping workflow: in search of microorganism-specific tryptic peptides enabling discrimination of subspecies. *Appl Environ Microbiol*. 2014; 80(14):4234–41. <https://doi.org/10.1128/AEM.00740-14> PMID: [24795381](#)
44. Prod'homme G, Bizzini A, Durussel C, Bille J, Greub G. Matrix-assisted laser desorption ionization-time of flight mass spectrometry for direct bacterial identification from positive blood culture pellets. *J Clin Microbiol*. 2010; 48(4):1481–3. <https://doi.org/10.1128/JCM.01780-09> PMID: [20164269](#)
45. Boyd MA, Tennant SM, Melendez JH, Toema D, Galen JE, Geddes CD, et al. Adaptation of red blood cell lysis represents a fundamental breakthrough that improves the sensitivity of *Salmonella* detection in blood. *J Appl Microbiol*. 2015; 118(5):1199–209. <https://doi.org/10.1111/jam.12769> PMID: [25630831](#)
46. Tamura K, Peterson D, Peterson N, Stecher G, Nei M, Kumar S. MEGA5: molecular evolutionary genetics analysis using maximum likelihood, evolutionary distance, and maximum parsimony methods. *Mol Biol Evol*. 2011; 28(10):2731–9. <https://doi.org/10.1093/molbev/msr121> PMID: [21546353](#)
47. Tamura K, Nei M. Estimation of the number of nucleotide substitutions in the control region of mitochondrial DNA in humans and chimpanzees. *Mol Biol Evol*. 1993; 10(3):512–26. PMID: [8336541](#)
48. Wuthiekanun V, Limmathurotsakul D, Wongsuvan G, Chierakul W, Teerawattanasook N, Teparrukkul P, et al. Quantitation of *B. pseudomallei* in clinical samples. *Am J Trop Med Hyg*. 2007; 77(5):812–3. PMID: [17984331](#)
49. Rettinger A, Krupka I, Grunwald K, Dyachenko V, Fingerle V, Konrad R, et al. *Leptospira* spp. strain identification by MALDI TOF MS is an equivalent tool to 16S rRNA gene sequencing and multi locus sequence typing (MLST). *BMC Microbiol*. 2012; 12:185. <https://doi.org/10.1186/1471-2180-12-185> PMID: [22925589](#)
50. Amornchai P, Chierakul W, Wuthiekanun V, Mahakhunkijcharoen Y, Phetsouvanh R, Currie BJ, et al. Accuracy of *Burkholderia pseudomallei* identification using the API 20NE system and a latex agglutination test. *J Clin Microbiol*. 2007; 45(11):3774–6. <https://doi.org/10.1128/JCM.00935-07> PMID: [17804660](#)