

Figure 1. Kaplan Meier curves for time to event for primary outcome and composite safety outcome

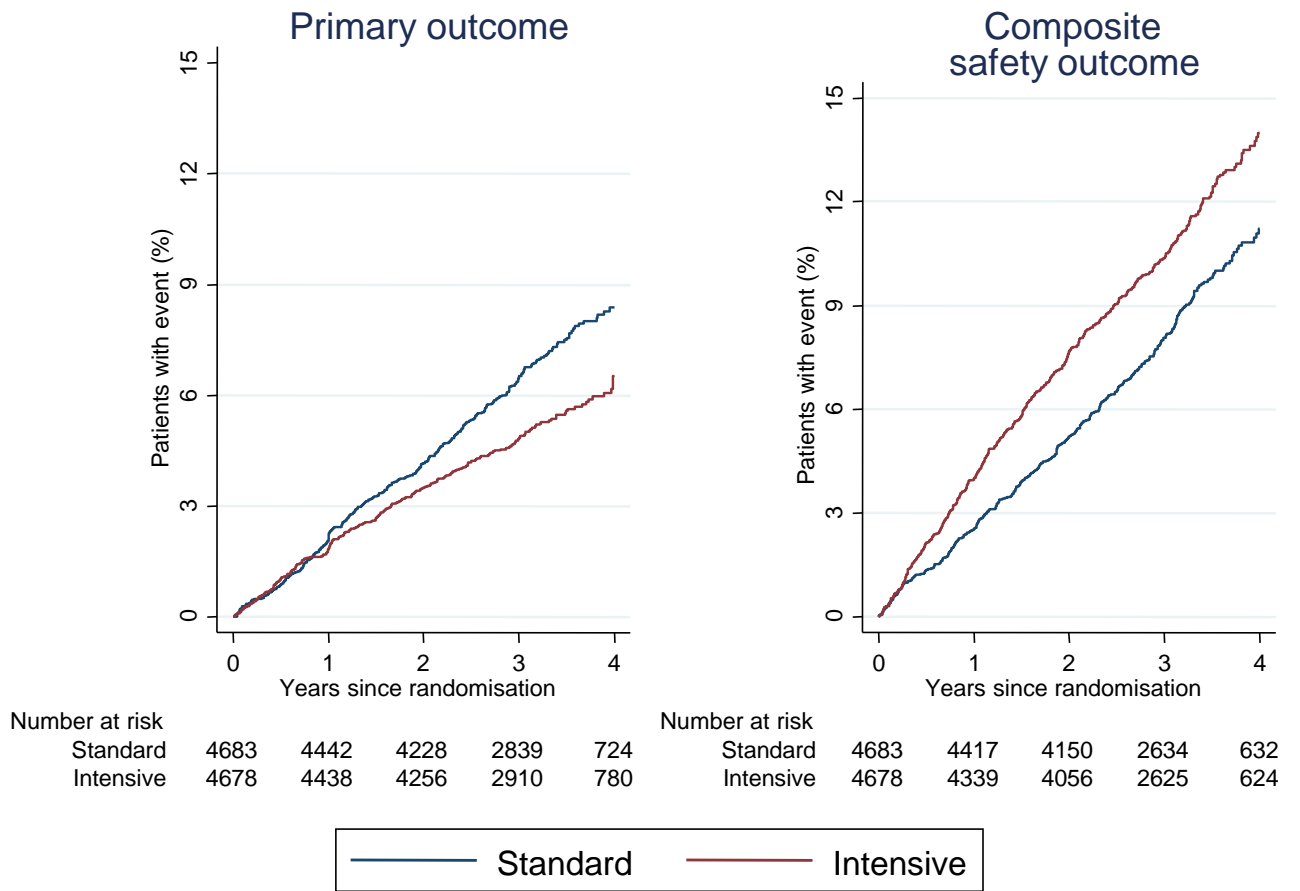


Figure 2. Kaplan Meier plots of time to death following a) primary outcome, b) safety outcome

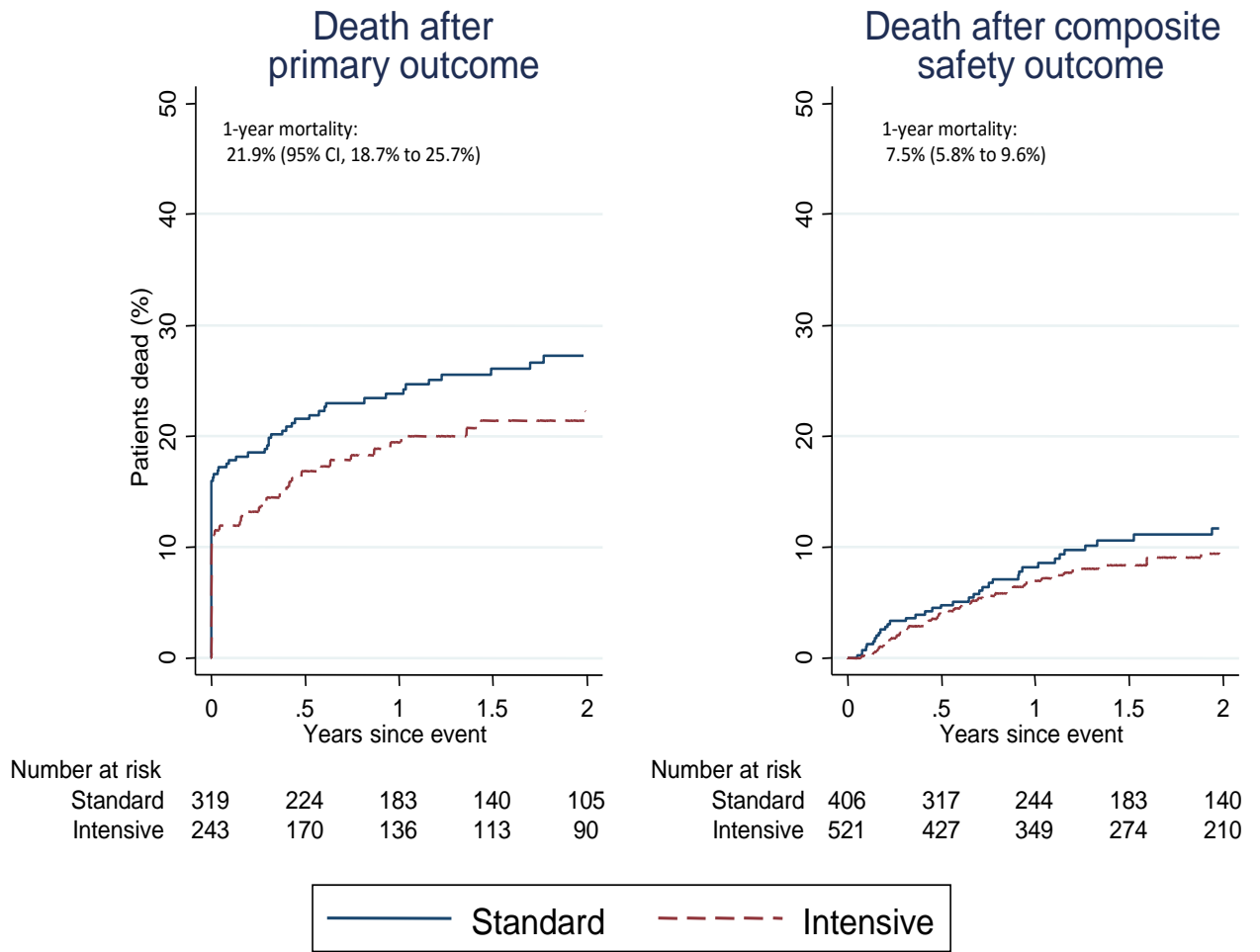


Figure 3. Predicted and observed risk by 6 categories of predicted risk

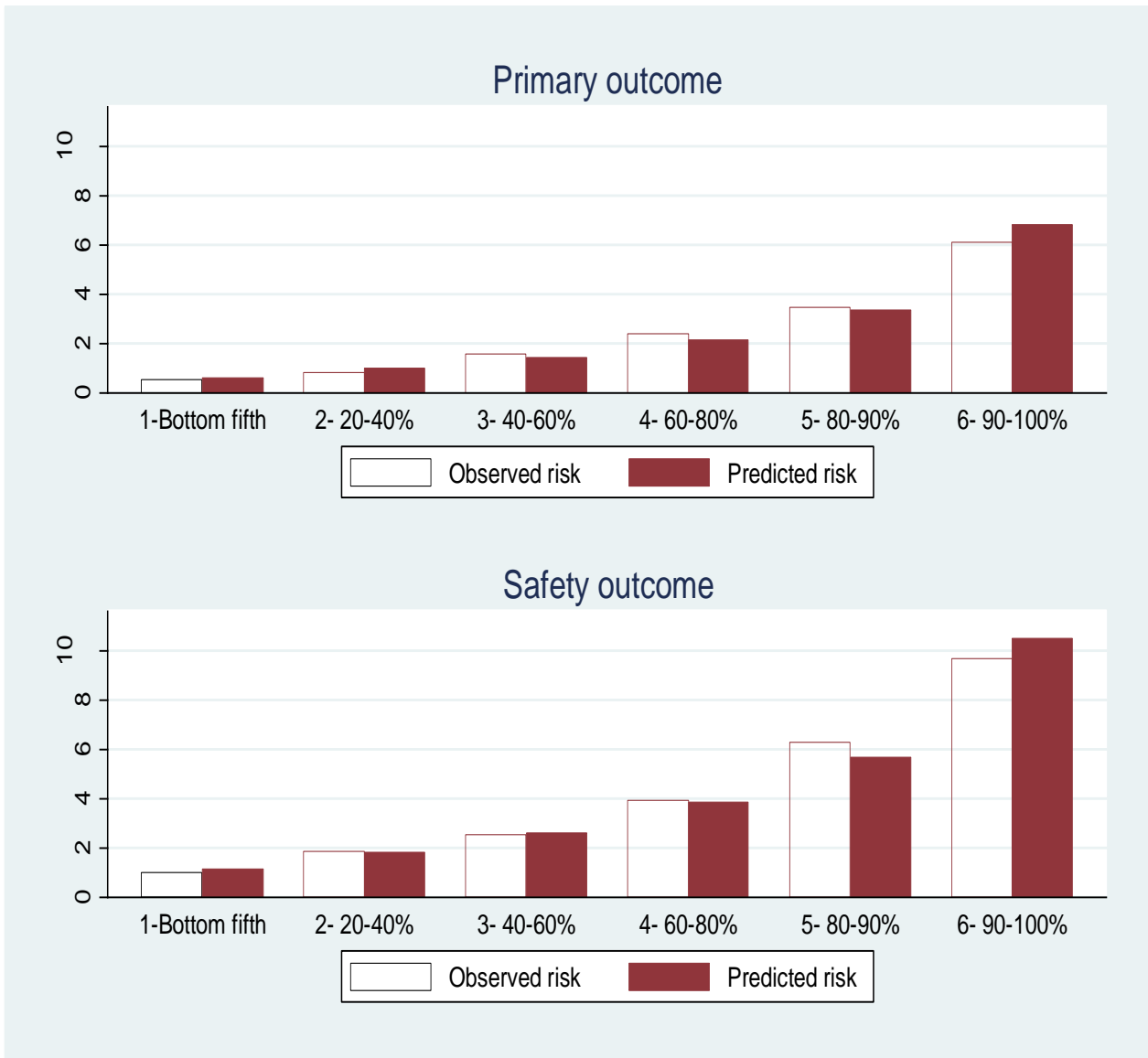
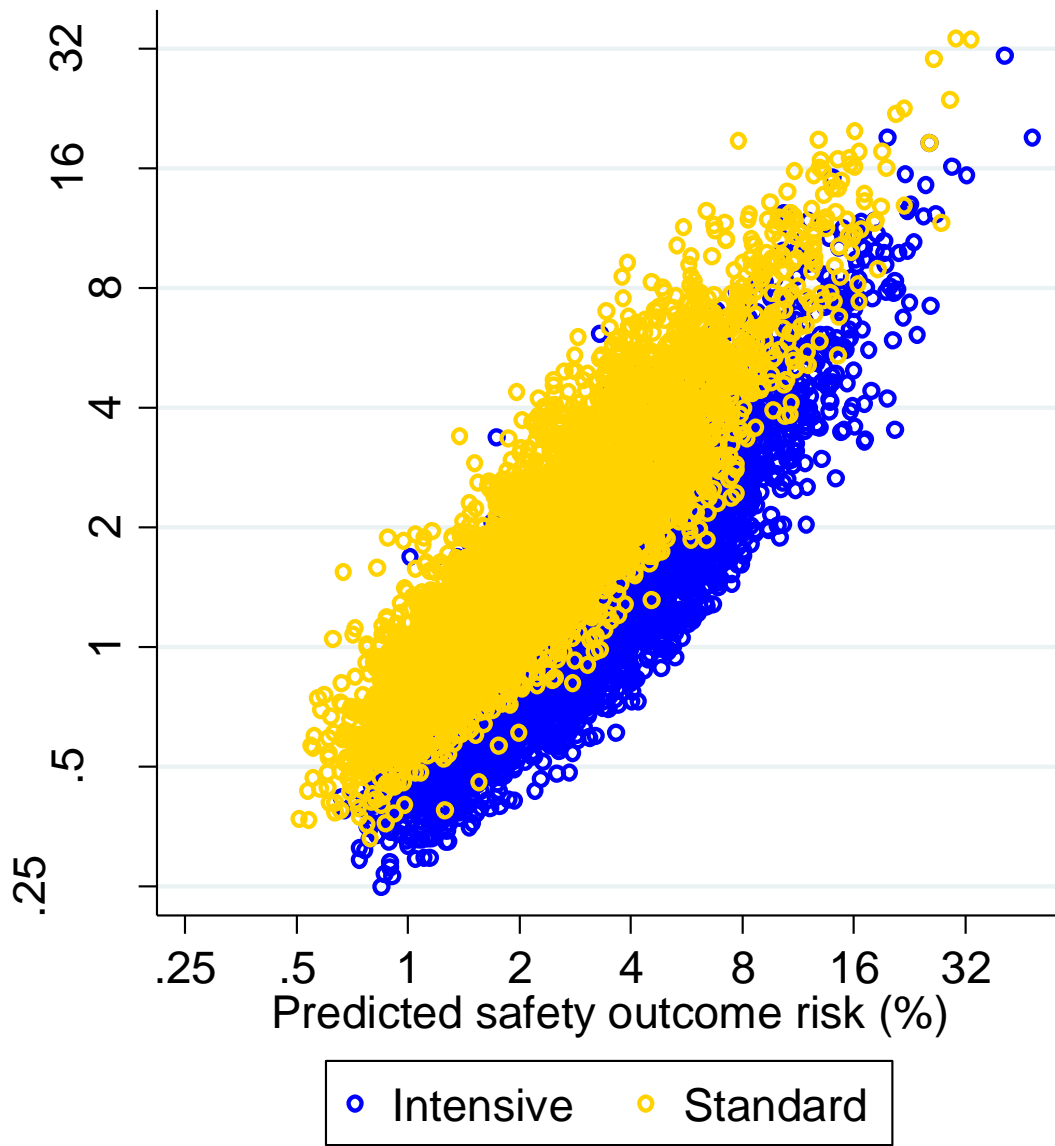
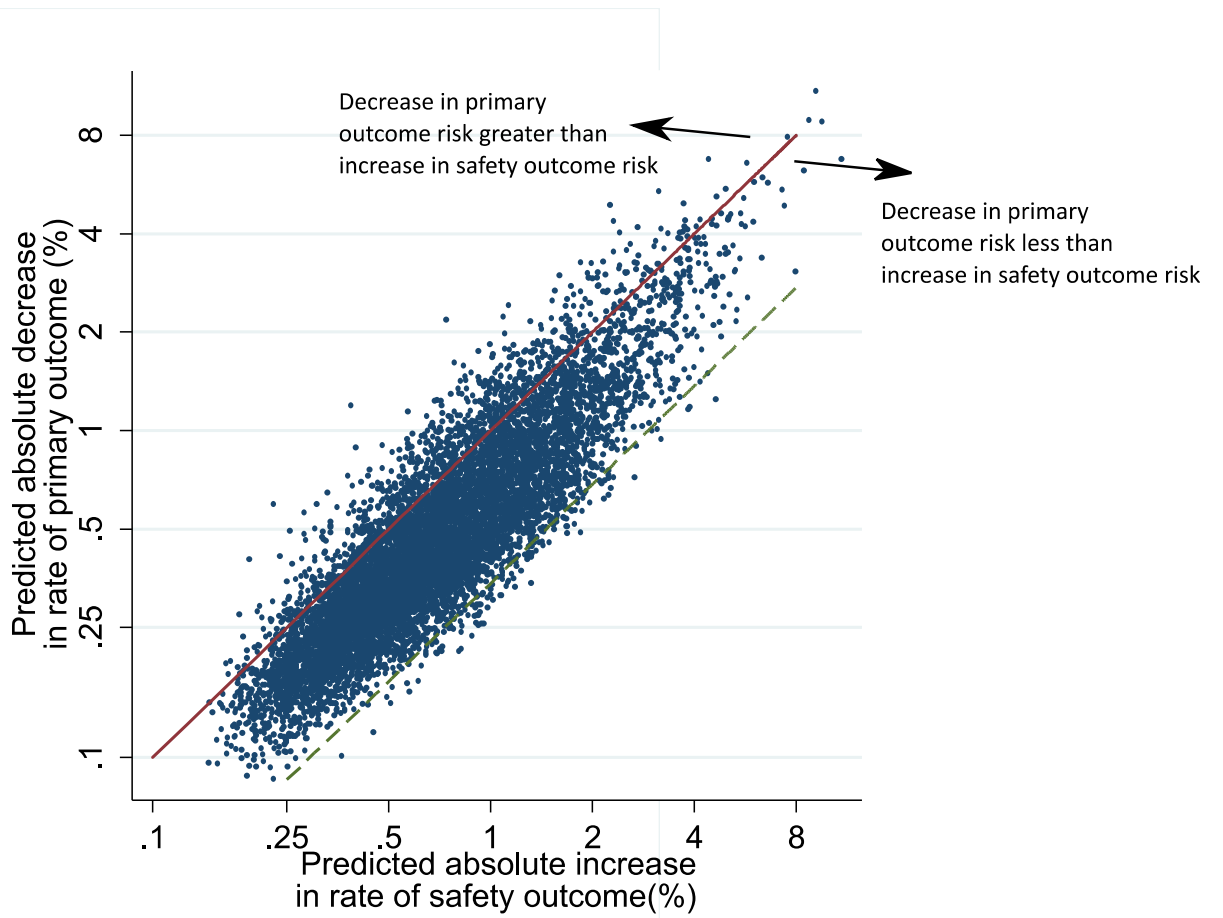




Figure 4. Predicted annual event rate for primary outcome and composite safety outcome



Correlation coefficient=0.80

Figure 5. Individual patient trade-off between the annual increase in primary efficacy outcome risk, and the predicted decrease in composite safety outcome risk when using intensive therapy vs standard therapy



	Equal effect of intensive therapy on primary outcome and safety outcome
	Equal trade-off for primary outcome and safety outcome, taking account of their differing 1-year mortality risk

