

Additional file 3

Distribution of $PC_{1/2}$ by study location and year

Figure S1 Distribution of $PC_{1/2}$ in Cambodia in patients treated with artesunate alone in the first 72 hours or artesunate and mefloquine

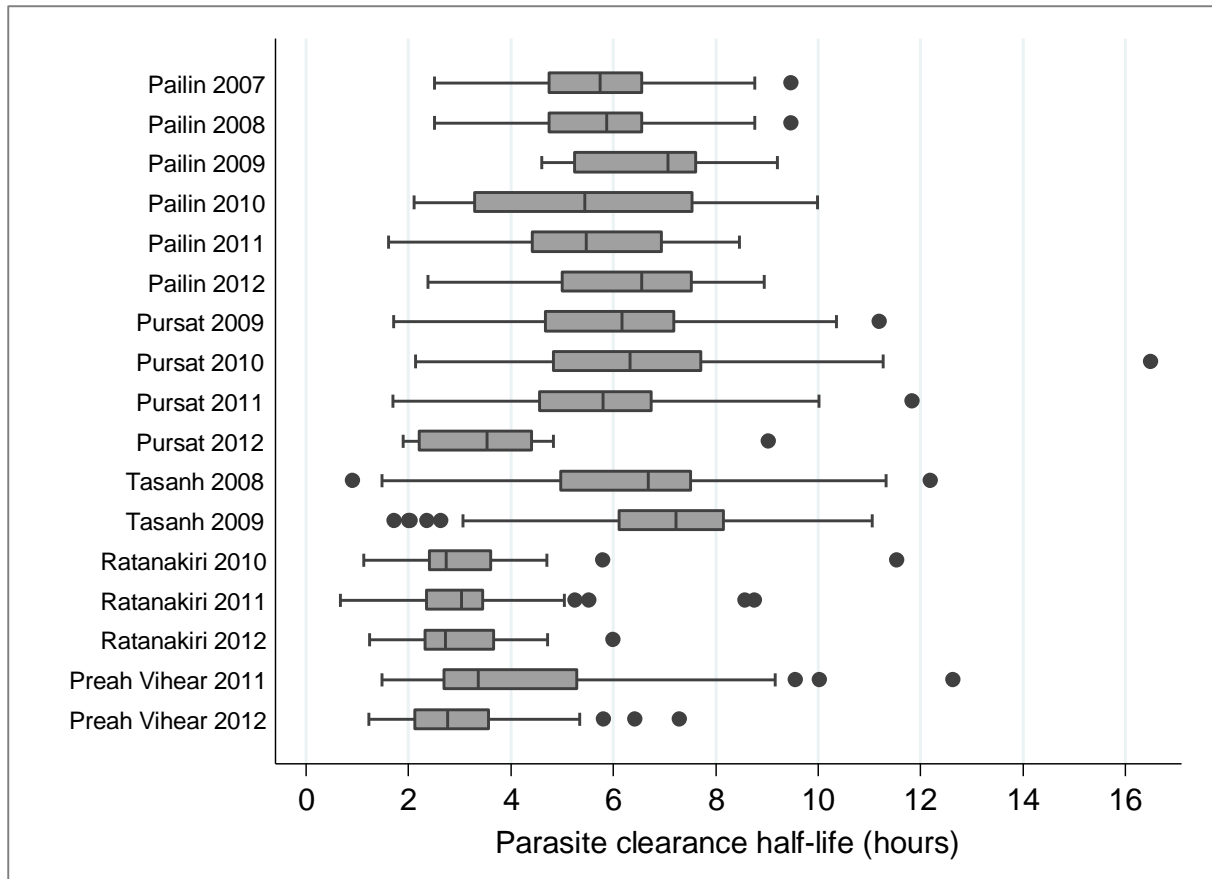


Figure S2. Distribution of $PC_{1/2}$ in western Thailand in patients treated with artesunate alone in the first 48 hours or in combination with mefloquine

Light grey bars represent data from the study in hyperparasitaemic patients, dark grey bars represent data from studies in uncomplicated malaria.

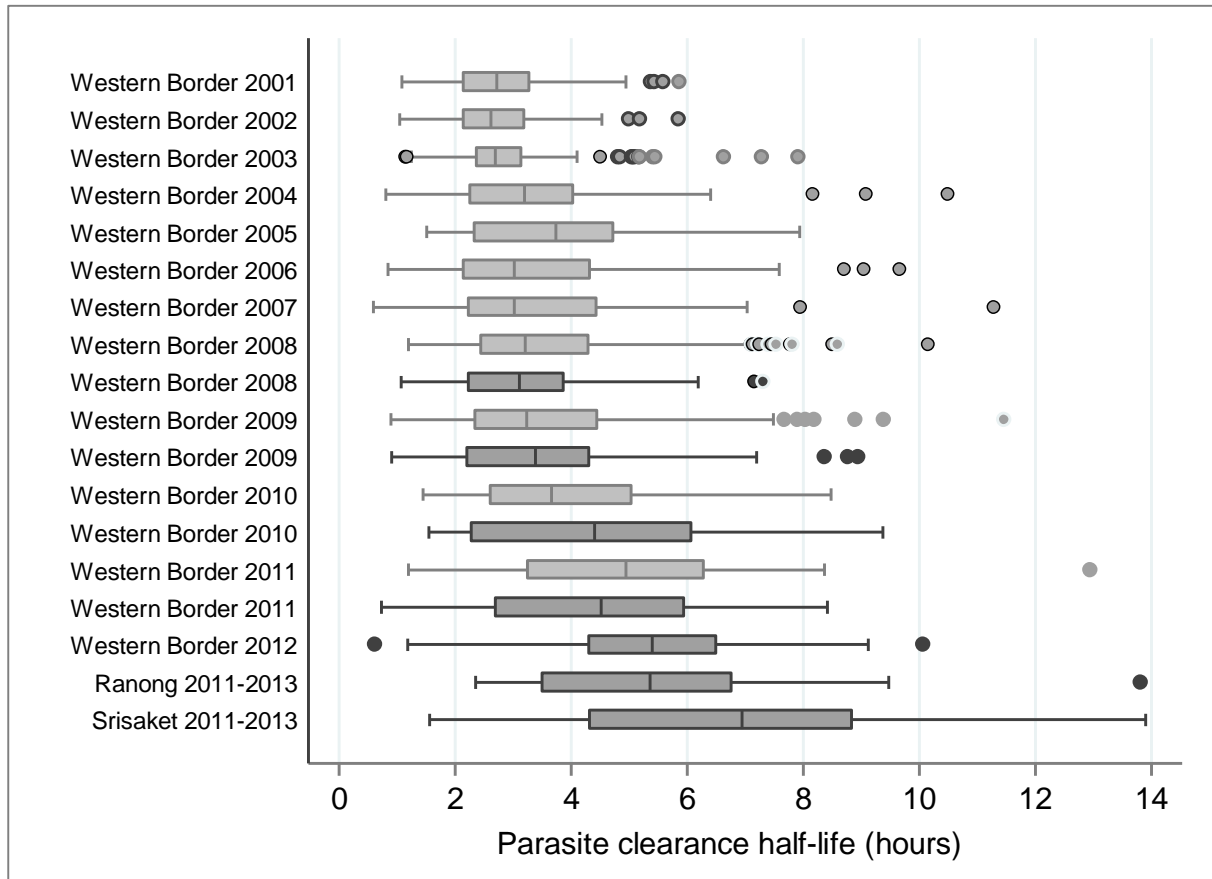


Figure S3. Distribution of $PC_{1/2}$ in patients treated with a standard artemether-lumefantrine regimen

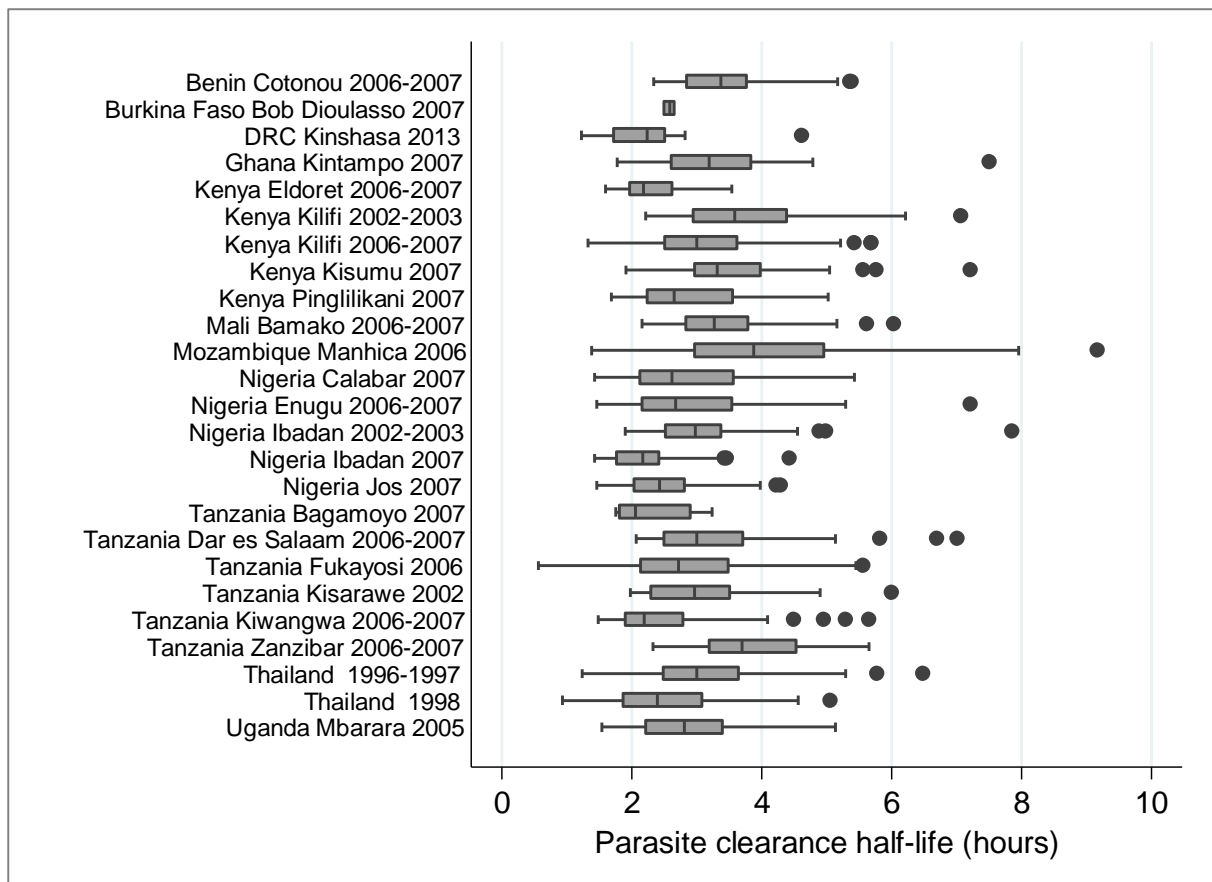


Figure S4. Distribution of $PC_{1/2}$ in patients treated with 2 mg/kg/day artesunate alone or in combination with other drugs (in all areas except Thailand and Cambodia)

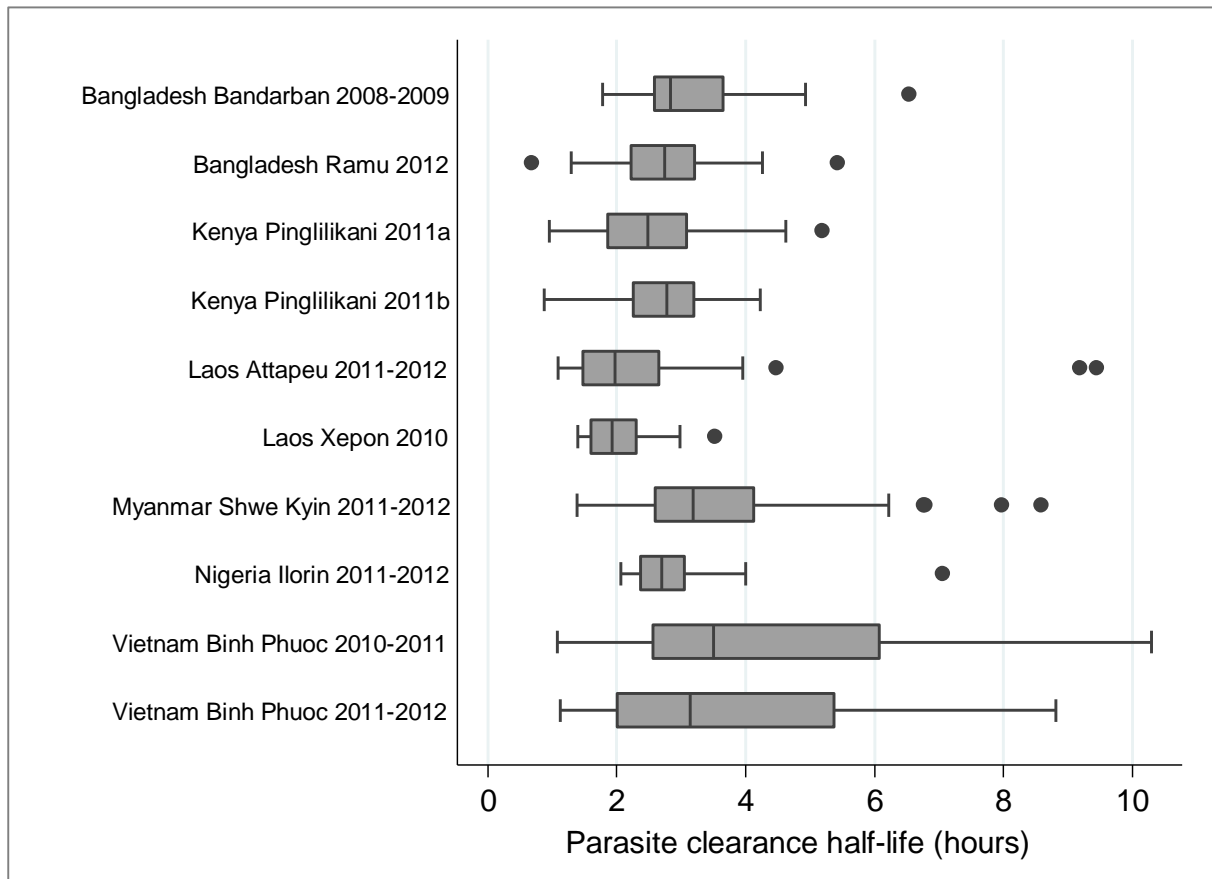


Figure S5. Distribution of PC_{1/2} in patients treated with 4 mg/kg/day artesunate alone or in combination with other drugs (in all areas except Thailand and Cambodia)

