



RESEARCH

Open Access

Methods to measure potential spatial access to delivery care in low- and middle-income countries: a case study in rural Ghana

Robin C Nesbitt^{1*}, Sabine Gabrysch¹, Alexandra Laub², Seyi Soremekun³, Alexander Manu^{3,4}, Betty R Kirkwood³, Seeba Amenga-Etego⁴, Kenneth Wiru⁴, Bernhard Höfle⁵ and Chris Grundy⁶

Abstract

Background: Access to skilled attendance at childbirth is crucial to reduce maternal and newborn mortality. Several different measures of geographic access are used concurrently in public health research, with the assumption that sophisticated methods are generally better. Most of the evidence for this assumption comes from methodological comparisons in high-income countries. We compare different measures of travel impedance in a case study in Ghana's Brong Ahafo region to determine if straight-line distance can be an adequate proxy for access to delivery care in certain low- and middle-income country (LMIC) settings.

Methods: We created a geospatial database, mapping population location in both compounds and village centroids, service locations for all health facilities offering delivery care, land-cover and a detailed road network. Six different measures were used to calculate travel impedance to health facilities (straight-line distance, network distance, network travel time and raster travel time, the latter two both mechanized and non-mechanized). The measures were compared using Spearman rank correlation coefficients, absolute differences, and the percentage of the same facilities identified as closest. We used logistic regression with robust standard errors to model the association of the different measures with health facility use for delivery in 9,306 births.

Results: Non-mechanized measures were highly correlated with each other, and identified the same facilities as closest for approximately 80% of villages. Measures calculated from compounds identified the same closest facility as measures from village centroids for over 85% of births. For 90% of births, the aggregation error from using village centroids instead of compound locations was less than 35 minutes and less than 1.12 km. All non-mechanized measures showed an inverse association with facility use of similar magnitude, an approximately 67% reduction in odds of facility delivery per standard deviation increase in each measure (OR = 0.33).

Conclusion: Different data models and population locations produced comparable results in our case study, thus demonstrating that straight-line distance can be reasonably used as a proxy for potential spatial access in certain LMIC settings. The cost of obtaining individually geocoded population location and sophisticated measures of travel impedance should be weighed against the gain in accuracy.

* Correspondence: r.nesbitt@uni-heidelberg.de

¹Epidemiology and Biostatistics Unit, Institute of Public Health, Heidelberg University, Heidelberg, Germany

Full list of author information is available at the end of the article

Introduction

Skilled attendance at birth is recommended to reduce the over 270,000 maternal and three million neonatal deaths that occur annually, most in low-income countries [1]. Many factors influence the use of skilled delivery care, including characteristics of the mother and of the service environment [2]. In many rural high-mortality settings, geographic access to skilled delivery care is poor. While often neglected, the impact of geographic access to skilled care on choice of delivery place is of similar magnitude as that of education or wealth [3].

Defining access

Access to health care has been conceptualized and operationalized in many ways. Potential and realized access distinguish between stages in the use of care [4]: potential access refers to the availability of services in a geographic area, realized access to the actual use of services after barriers have been overcome. The term “spatial access” encompasses two of the formative five dimensions of access described by Penchansky and Thomas: accessibility, referring to the spatial relationship between location of supply and demand; and availability, referring to the adequacy of provider supply in relation to demand [5,6]. Accessibility and availability are often combined into a single index to measure geographic coverage of care, ranging in complexity from a simple ratio of provider supply to patient demand, to more complex indices such as the two-step floating catchment area method [7,8]. This paper addresses the first dimension, calculating accessibility as in travel impedance, which can be thought of as a measure of the “friction of distance” or the “cost of travel” between locations and expressed in distance or time [9].

Measures of accessibility in public health research

Distance or travel time between place of residence and a health service location are common measures of travel impedance used in public health research. The simplest approximation is straight-line or Euclidean distance between two points. Geographic information systems (GIS) can be used to model more realistic estimates of travel impedance, such as road network distance or travel time.

In principle, there are two types of data models that can be used to model the cost of travel in GIS separately or in combination: vector data models and raster data models [9]. Vector data models represent traversable paths between points along lines (termed edges) in a network, with anything not on the network being non-traversable ‘empty space’, whereas raster data models represent travel through a pixel (cell) grid, where all space in a defined area is included in the grid. The cost of travel in both model scenarios is determined by an impedance value assigned to each edge in vector

models, or each cell, in raster models. Both models can incorporate travel along roads, and raster models usually include topographic features such as land-cover and void areas that cannot be traversed (e.g. lakes, legally restricted areas). Time or season may modify these impedance values, and space-time models can incorporate changes in topography and land-cover as well as population over time.

In practice, the appropriate impedance measure is largely determined by several issues: data availability, geographic context (topography i.e. water bodies and mountains) and cultural context (i.e. common modes of travel). Information on road networks and land-cover is publicly and commercially available in many high-income countries, making more sophisticated estimates of distance and travel time possible (e.g. United States Census Bureau, TIGER/Lines, ESRI). Freely available geographic information mapped by crowdsourcing, such as the OpenStreetMap, can also be used for routing in areas with high quality data [10]. Network models are appropriate in high-income settings like the United States because most travel occurs on roads, whereas in countries with limited infrastructure, travel does not always occur in vehicles or on roads. Additionally, road and land-cover data are not systematically available on a global level, and particularly scarce in low-income countries [11]. Sourcing input data is an important and sometimes difficult task, the quality of the estimates depends on the resolution, accuracy, currency and completeness of the data [12]. Data often come from multiple sources, and it is important to ensure that the different layers of information are temporally coherent, i.e. refer to the same time period. Researchers working in low-income countries often have to spend considerable time and effort to locate data, usually from multiple sources, or digitize road network maps themselves [13].

Previous studies

Previous comparisons of different measures of geographic accessibility have suggested that the use of Euclidean distance is a poor proxy of access, however, most comparisons have been in high-income countries, and many did not assess the methods against an outcome (Table 1). Two studies conducted in predominantly rural areas in LMICs concluded against Euclidean distance; one in favor of actual travelled distance measured with trackers [14], and one for raster travel time [15]. However, both studies were conducted in more mountainous regions of East Africa, and their findings might not hold true in other flatter settings.

Study aim and objectives

By comparing different measures of travel impedance, we aim to determine if Euclidean distance can be used

Table 1 Studies comparing different methods of calculating travel impedance to health services

# Ref	Author (year) Country	Data sources	Impedance measures	Outcome	Comparison method	Favoured measure/ conclusion
Low- and middle-income countries						
1 [14]	Okwaraji (2012) Ethiopia	1. Geocoded households 2. Geocoded health center 3. Land cover, Ethiopia Mapping Agency 4. Digital elevation model from Shuttle Radar Topography Mission (NASA)	1. Euclidean distance 2. Raster travel time 3. Actual travel distance	Under 5 child mortality	1. Correlation coefficient 2. Compare measures of effect	Actual travel distance
2 [15]	Noor (2006) Kenya	1. Geocoded homesteads 2. Geocoded HFs 3. Population density at 100 m resolution (Kenya Census 1999) 4. Road network (Africover, plus manual updates) 5. Topography (Africover, plus updates & Livestock research institute, Nairobi & Park & reserve digital map from Kenya Wildlife Service)	1. Euclidean distance 2. Raster travel time (termed transport network model) 3. Raster travel time (transport network model), adjusted for competition between facilities	Predicted specific facility use by febrile children; Proportion of people within one hour of HF	1. Kappa statistic (agreement between predicted and observed facility use) 2. Linear regression (R ²) 3. Scatter plots 4. Spatial mapping	Raster travel time (transport network model) adjusted for competition
3 [16]	Costa (2003) Brazil	1. Admissions data from national public health database 2. Extracted district of residence from postal codes from national database 3. GIS coordinates for 14 public hospitals 4. City transit network map, bus routes	1. Euclidean distance 2. "Real" distance, estimated as city bus itinerary from district centroid to hospital, adjusted for residence district area	None	1. Maximum difference in distances	"Real" distance
High-income countries						
3 [17]	*Cudnik (2012) USA	1. Patient location via EMS data 2. HF location via addresses 3. Road network (ArcGIS StreetMap; commercially available)	1. Euclidean distance 2. Network distance 3. Actual transport distance (in EMS vehicle)	None	1. Wilcoxon signed rank test 2. Spearman rank 3. Linear regression (R ²)	Reasonable to use Euclidean distance
4 [9]	*Delamater (2012) USA	1. Population (US Census 2010) 2. Road network (Michigan Center for Geographic Information 2009)	1. Network travel time 2. Network distance 3. Raster travel time 4. Raster distance	Proportion of state classified as limited access area (LAA)	1. Percentage change in proportion LAA 2. Mapping	Depends on research question

Table 1 Studies comparing different methods of calculating travel impedance to health services (Continued)

# Ref	Author (year) Country	Data sources	Impedance measures	Outcome	Comparison method	Favoured measure/ conclusion
5 [18]	~*Lian (2012) USA	1. Incident breast cancer cases (Missouri cancer registry) 2. Population coordinates (US Census 2000) 3. HF coordinates (FDA) 4. Road Network (US Census/ TIGER)	1. Network travel time 2. Average of 5 shortest network travel times 3. Service density 4. Two-step floating catchment area (2SFCA)	Incident odds of late-stage breast cancer	1. Spearman rank 2. Kappa coefficient 3. Moran I index 4. Comparison of effect measures on risk of outcome	2SFCA
6 [19]	*Jones (2010) USA	1. Population location (Insurance claims data) 2. HF location via addresses 3. Road network (no source listed)	1. Euclidean distance 2. Network distance	None	1. Wilcoxon's signed rank sum tests 2. Scatter plots	Network distance
7 [20]	*Apparicio (2008) Canada	1. Population coordinates (Statistics Canada) 2. HF coordinates (Quebec Ministry of Health and Social services) 3. Road network (CanMap street files, commercially available)	1. Euclidean distance 2. Manhattan distance 3. Network distance 4. Network travel time	None	1. Spearman rank 2. Absolute differences in measures 3. Spatial mapping	Network distance
8 [21]	Fone (2006) UK	1. Population via postal survey from Gwent Health Authority 2. Population location via census 3. HF locations from Gwent Health Authority 4. Road network (MapInfo Drivetime software, commercially available)	1. Euclidean distance 2. Network travel time 3. Network distance	Perceived accessibility	1. Kruskal-Wallis 2. Spearman rank	Minimal advantage in using sophisticated measures
9 [22]	Haynes (2006) UK	1. Hospital-based patient questionnaire (with post-codes) 2. Geocoded HF location 3. Road network (Ordnance Survey Meridian, digital map)	1. Euclidean distance 2. Network travel time 3. Actual travel time	None	1. Spearman rank 2. Linear regression (R^2)	No evidence that GIS estimates better than Euclidean
10 [23]	*Fortney (2000) USA	1. Population location from previous study sample 2. HF location from physician desk reference database (State licensing board) 3. Road network (US Census Bureau)	1. Euclidean Distance 2. Network distance 3. Differences between measures	None (travel time as gold standard)	1. Correlation coefficients 2. Linear regression	Marginal gains in accuracy using network measures

Included studies compared Euclidean distance to at least one other method of calculating travel impedance included in our comparison, or compared two other methods used in our comparison (~denotes an exception). Abbreviations: HF = health facility; FDA = US Food and Drug Administration; EMS = emergency medical service; 2SFCA = two-step floating catchment area; LAA = limited access area; NASA = US National Space Agency. *Studies also compared population aggregation methods (e.g. address, census area, census block post/zip-code centroid etc., details not included).

as a reasonable proxy for potential spatial access in LMIC settings, using Brong Ahafo region of Ghana as a case study.

This study has three objectives:

- 1) to investigate the effect of using different geospatial algorithms and data models (vector, raster) on measures of travel impedance (Euclidean distance, network distance, network travel time, raster travel time; Table 2) between population and delivery care,
- 2) to assess the potential spatial aggregation error associated with using average population location (village centroid) compared with individually geocoded location (compound of residence) on measures of travel impedance,
- 3) to compare the association that different proxies for spatial access to care show with facility delivery, i.e. whether or not women use a facility for delivery as a binary outcome variable, using surveillance data over a one-year period from the study area.

Methods

Overview & data sources

Ghana is a West African country with a high maternal mortality ratio estimated at 328 per 100,000 in 2011 [26]. The study area consists of 7 contiguous districts with a population of more than 100,000 women of reproductive age (14-45 yrs), where demographic surveillance was established for several field trials [27-29]. Travel occurs on roads, and mainly on foot to the closest health facility, as reported by approximately 58% of households in a 2003 national survey [30].

A geospatial database of the study area was created, mapping population location in compounds and village centroids, service locations for all health facilities offering delivery care (including higher level facilities with capacity for surgery), and a detailed road network (Figure 1). We included administrative boundaries and topography (land-cover, including water bodies) [24,25]. We combined data sources in a workflow (Figure 2), and describe the field-work in more detail here:

1. Road network

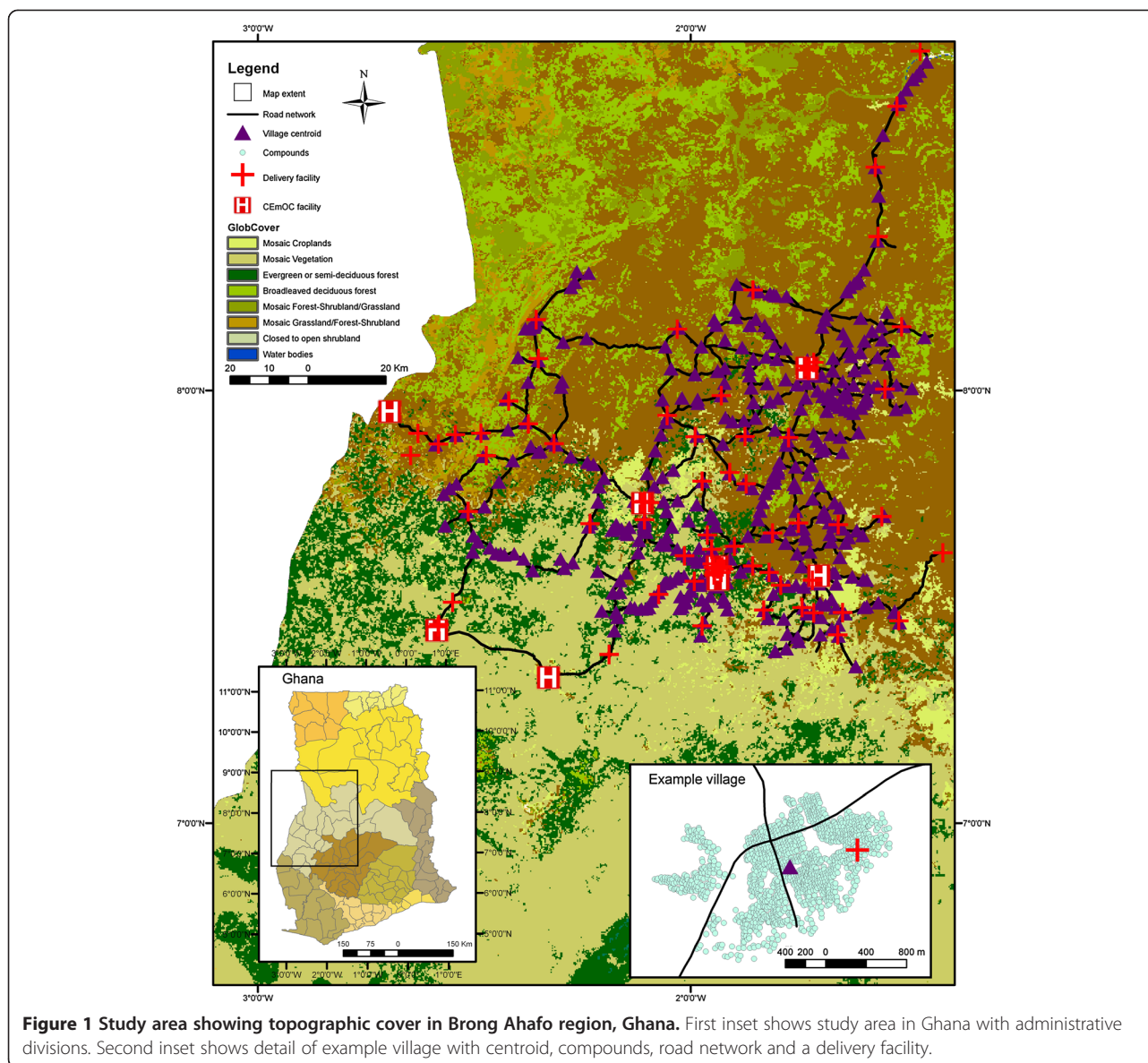
A detailed road network of all roads in the study area was created using GPS trackers. The study area covers approximately 15,302 km² and our road network includes over 1,900 km of roads. Extensive deskwork was done in order to transform these road tracks into a network dataset appropriate for analysis in ArcGIS, ensuring functional connectivity between roads. A tool was developed in a PostGIS geodatabase to validate the connectivity of the network roads, and the road network was subsequently cleaned in GRASS GIS [31]. The road network was then integrated into the land-cover raster layer for analysis using a 200 m resolution. Additional information on road condition, surface type, and usability in the rainy season was collected for all roads.

Travel times by vehicle between village centroids were collected for one study district. A total of 88 journey segments were used in order to calibrate road speeds, which were assigned with reference to speeds used in the literature [32,33]. Road speeds

Table 2 Definitions of different impedance measures

Impedance measure	Units	Definition	Data type	GIS tool
Euclidean distance	Km	Straight-line distance from population to closest health facility	Vector	Near
Network distance	Km	Distance along road network from population to closest health facility, plus Euclidean distance to the road network from the population, and from the road network to the health facility	Vector	Network analyst closest facility + Near
Mechanized network time	Hour	Distance along road network from population to closest health facility multiplied by driving speed on roads, plus Euclidean distance multiplied by off-road walking speed (2 km/h) to the road network from the population, and from the road network to the health facility	Vector	Network analyst closest facility + Near
Non-mechanized network time	Hour	Distance along road network from population to closest health facility multiplied by walking speed on roads (4 km/h), plus Euclidean distance multiplied by off-road walking speed (2 km/h) to the road network from the population, and from the road network to the health facility	Vector	Network analyst closest facility + Near
Mechanized raster time	Hour	Travel time from population to closest health facility, assuming mechanized travel on roads and non-mechanized travel off road according to land cover speeds*, 200 m x 200 m grid	Raster	Least-cost path
Non-mechanized raster time	Hour	Travel time from population to closest health facility, assuming non-mechanized travel on roads (4 km/h) and off roads according to land cover speeds*, 200 m x 200 m grid	Raster	Least-cost path

*GlobCover 2009 [24], GEM European Commission project [25].



ranged from 30 km/h on dirt roads, to 90 km/h on good tarmac roads. Very few roads (four in the study area) were reported as impassable during the rainy season, so we model the dry season scenario only.

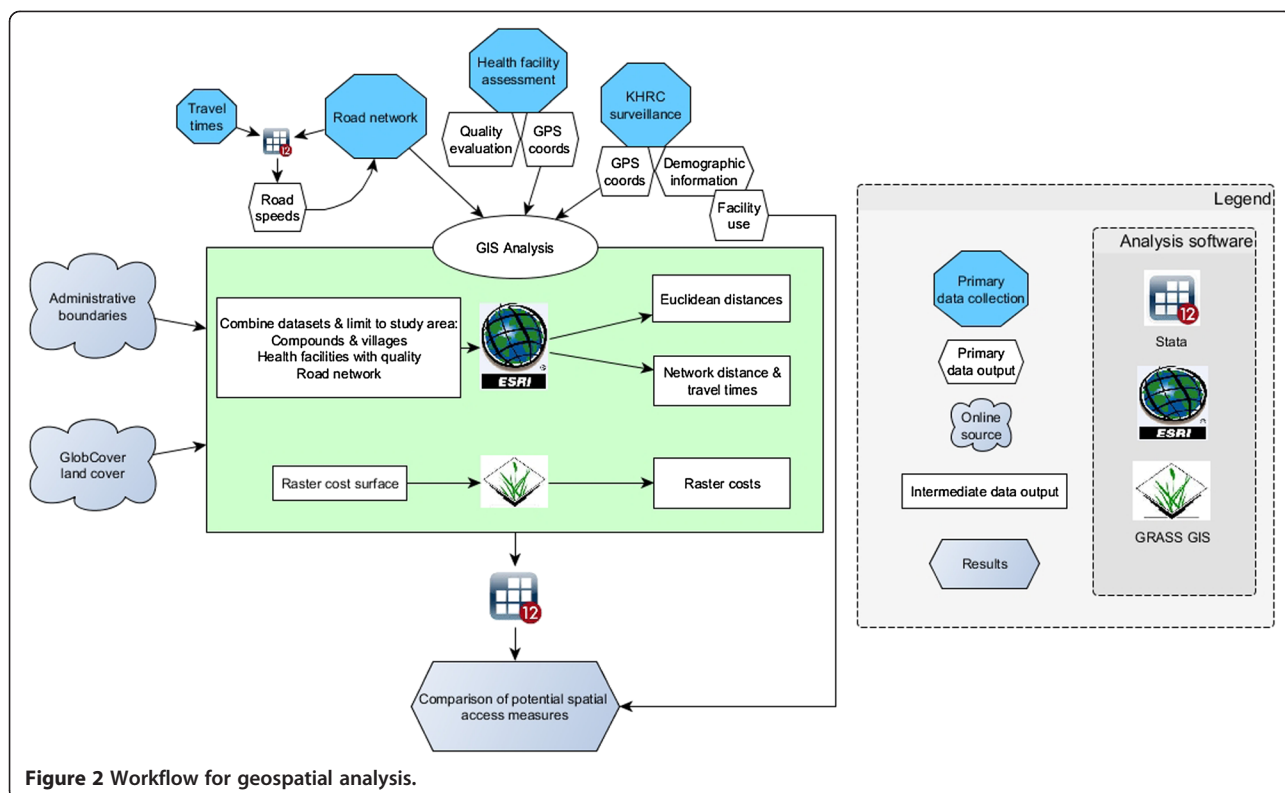
2. Health facility census

We conducted a health facility assessment of all 86 geocoded health facilities in the study area to categorize facilities according to the availability and quality of maternal and newborn services: 64 facilities offered delivery services and 8 offered comprehensive emergency obstetric care (CEmOC), i.e. higher-level facilities with the capacity for cesarean section and blood transfusion [34-36]. The majority of the hospitals, health centers, and clinics with delivery care are publically owned, and all

maternity homes are operated privately by the Ghana Registered Midwives Association.

3. Surveillance

Surveillance of all women of reproductive age in the study area through monthly visits was undertaken as part of health and demographic surveillance for several field studies [27,28]. The surveillance included taking GPS coordinates of 433 village centroids and, in 173 larger villages, coordinates of 47,537 individual compounds (with a median of 450 compounds per village (IQR 258-844, max 3,204)). For the analysis of facility use (objective 3), we included villages and compounds where deliveries occurred in 2009 with known birthplace and compound coordinates, resulting in 169 villages,



8,120 compounds and 9,306 births. There was a median of 96 births per village (range 1–634), and a median of 1 birth per compound (range 1–8).

Distance measures

All six impedance measures were calculated to two levels of care, distance to closest facility with delivery care, and distance to closest facility with CEMOC (Table 2).

In ArcMap version 10.0, we used the Spatial Analyst tool “Near” to calculate Euclidean distances and the Network Analyst tool “Closest Facility Analyst” to calculate network distance and time (ESRI software, California). For the raster-based analyses, we used the cost surface algorithm in GRASS GIS to determine the fastest route (least-cost path) from starting points to given destinations [31,37].

Analysis

To address objective 1, we used Spearman rank correlation coefficients to compare the six impedance measures within each origin destination pair (i.e. village centroid to closest delivery facility and village centroid to closest CEMOC in a dataset of all villages; compound to closest delivery facility and compound to closest CEMOC in a dataset of all compounds; Table 2).

We assessed potential spatial aggregation error (objective 2) in three ways using the surveillance dataset. First, we compared the correlation of the measures

calculated from the two origins, and then whether the different measures identified the same facility as closest from both origins for each birth. Finally, we calculated distance deviance, the absolute difference in distance or time between measures starting from compounds compared to measures starting from village centroid for each birth. These absolute differences represent the potential error in access estimates that result from using average village centroids as opposed to individual compound coordinates, and are dependent on the dispersion of villages.

Spatial access to health care is known to be a facilitator of delivery in a health facility [3]. The impedance measure that is the best proxy of spatial access to delivery care, i.e. has the least measurement error, should then show the strongest association with facility delivery in a regression model (objective 3). We modeled the association of each impedance measure with whether or not a woman delivered in a facility as a binary outcome variable, in a logistic regression model for all births in the study area. For ease of comparison between measures with units in distance and time, we standardized our impedance measures to have a mean approximately equal to zero and standard deviation (SD) of one. In order to account for clustering of women by village, we used logistic regression models with robust standard errors. All analyses were done in Stata version 12.0.

Ethical considerations

This study uses data collected for the Newhints trial, which was approved by the ethics committees of the Ghana Health Service, Kintampo Health Research Center and the London School of Hygiene and Tropical Medicine (LSHTM) [28]. The additional analyses were approved in an amendment by the LSHTM ethics committee.

Results

Different measures of travel impedance

Median Euclidean distance from compounds to closest health facility was less than 1 km, and less than 10 km to the closest CEmOC facility (Table 3). Network distances were longer than Euclidean distances; partly because this measure includes distances to and from the road network (Table 3). Median mechanized network time (i.e. drive time) from compounds to closest facility was 13 minutes (0.22 hours), and to closest CEmOC was 23 minutes. Raster methods produced longer travel times than the network method; this is likely due to the use of the GlobCover topography map, which has higher impedance values (slower speeds) for off-road travel than the network model where we used a fixed speed of 2 km/h.

Median Euclidean distance from villages as origin to the closest delivery facility was 5.7 km; median distance to the closest delivery facility was less than 1 km from compounds (Table 3). However, the median of all villages should not be compared to the median of all compounds, as there are many more compounds than villages, and larger villages with many compounds are more likely to also have a health facility, leading to a shorter median distance

and travel time for measures from compound. A fair comparison of measures from compound to measures from village is made in the surveillance dataset of births from the 169 villages with both coordinates (see below, spatial aggregation error).

Distances to the closest CEmOC facility were over 10 km longer and mechanized travel times 2–2.5 times longer than to the closest delivery facility. For instance, median network distance from village to closest CEmOC was 19.4 km compared to 7.3 km to closest delivery facility. Non-mechanized travel times (i.e. walking) were much longer to CEmOC facilities than to delivery facilities in general: walking from one's compound along the road network to the closest delivery facility would take a median of 30 minutes, whereas walking to the closest CEmOC facility would take nearly 3 hours (Table 3).

With the exception of the mechanized measures, Spearman coefficients showed that distance and travel time measures were highly correlated with each other ($r > 0.89$, Tables 4 & 5). Correlation between travel times incorporating mechanized travel (i.e. driving) with the other measures was low; Euclidean distance and mechanized raster time from compound to closest delivery facility were the least correlated ($r = 0.39$). The highest correlation was between network distance and network walking time from village centroid to the closest CEmOC facility ($r = 0.99$). Correlations between measures showed a similar pattern from both origins (compounds and villages), with slightly higher correlations for the longer distances to CEmOC facilities.

Euclidean distance identified the same closest delivery facility as the other measures, except mechanized raster time, for about 80% of village centroids and about 90%

Table 3 Impedance measures from compound and village to closest facility using six methods

Distance to closest health facility	Compound as origin, n = 47, 537			Village as origin, n = 433		
	Mean (SD)	Median (IQR)	Range	Mean (SD)	Median (IQR)	Range
Euclidean (km)	3.01 (4.47)	0.91 (0.49-4.16)	0.0038 - 23.88	6.19 (4.59)	5.74 (2.18-9.12)	0.026 - 23.44
Network distance(km)	3.91 (5.33)	1.47 (0.85-4.99)	0.018 - 35.33	8.15 (6.53)	7.31 (2.86-11.78)	0.036 - 40.99
Mechanized network time (hr)	0.26 (0.17)	0.22 (0.12-0.35)	0.0055 - 1.11	0.26 (0.18)	0.23 (0.12-0.35)	0.008 - 1.00
Non-mechanized network time (hr)	1.08 (1.32)	0.50 (0.29-1.31)	0.0085 - 8.90	2.09 (1.63)	1.89 (0.77-3.00)	0.013 - 10.26
Mechanized raster time (hr)	0.31 (0.27)	0.25 (0.14-0.40)	0 - 2.78	0.27 (0.27)	0.23 (0.13-0.32)	0 - 2.40
Non-mechanized raster time (hr)	1.20 (1.40)	0.67 (0.31-1.50)	0 - 9.16	2.18 (1.64)	1.97 (0.88-3.06)	0 - 9.81
Distance to CEmOC	Mean (SD)	Median (IQR)	Range	Mean (SD)	Median (IQR)	Range
Euclidean (km)	12.53 (14.1)	9.64 (1.49-17.18)	0.028 - 84.27	17.36 (13.45)	14.73 (8.57-23.31)	0.15 - 84.00
Network distance (km)	15.08 (16.14)	11.25 (2.32-21.76)	0.041 - 90.63	22.18 (17.11)	19.38 (10.86-28.66)	0.53 - 90.27
Mechanized network time (hr)	0.42 (0.25)	0.39 (0.23-0.57)	0.0055 - 1.40	0.50 (0.27)	0.45 (0.29-0.66)	0.016 - 1.35
Non-mechanized network time (hr)	3.87 (4.02)	2.95 (0.72-5.50)	0.017 - 22.76	5.61 (4.26)	4.93 (2.74-7.20)	0.13 - 22.59
Mechanized raster time (hr)	0.49 (0.35)	0.44 (0.23-0.68)	0 - 2.89	0.52 (0.34)	0.46 (0.27-0.68)	0.009 - 2.40
Non-mechanized raster time (hr)	4.05 (1.14)	3.18 (0.90-5.75)	0 - 23.79	5.78 (4.37)	5.01 (2.76-7.45)	0.10 - 23.26

Note: n = 47,537 compounds in 173 villages for compound calculations, n = 433 villages for village calculations, compound and village statistics should not be compared due to different sample sizes. n = 64 delivery facilities; n = 8 CEmOC facilities.

Table 4 Spearman rank correlation coefficients (r) between different impedance measures and same health facility identified as closest using different impedance measures (%) for impedance measures calculated to closest delivery facility

	Euclidean distance		Network distance		Mechanized network time		Non-mechanized network time		Mechanized raster time	
	r	%	r	%	r	%	r	%	r	%
Compound as origin¹										
Network distance (km)	0.9330	91.6	1							
Mechanized network time (hr)	0.3904	89.6	0.5485	97.0	1					
Non-mechanized network time (hr)	0.8921	91.6	0.9824	100	0.6681	97.0	1			
Mechanized raster time (hr)	0.3785	72.9	0.4519	68.7	0.7226	67.8	0.5335	68.7	1	
Non-mechanized raster time (hr)	0.8763	91.0	0.8978	90.7	0.6649	88.5	0.9278	90.7	0.6748	73.6
Village as origin²										
Network distance (km)	0.9584	80.4	1							
Mechanized network time (hr)	0.5885	78.8	0.6842	98.5	1					
Non-mechanized network time (hr)	0.9529	80.4	0.9983	100	0.7177	96.5	1			
Mechanized raster time (hr)	0.5804	64.9	0.6389	72.5	0.7964	73.4	0.6616	72.5	1	
Non-mechanized raster time (hr)	0.9404	80.6	0.9813	91.0	0.7497	89.8	0.9876	91.0	0.7247	76.2

¹n = 47,537 compounds ²n = 433 villages; n = 64 delivery facilities.

of compounds (Table 4). The three network-based measures identified the same closest delivery facility for over 97% of the villages and compounds. Mechanized raster time differed most, identifying the same closest facility for the fewest villages and compounds as other methods.

Spatial aggregation error

We assessed the influence of spatial aggregation, i.e. how using village centroids (average compound location) differs from using individual population location (compound

coordinates) when calculating distance and travel time to health facilities using the surveillance dataset (9,306 births). Correlation coefficients between the two options were high for most measures ($r > 0.82$, Table 6). The same delivery facility was identified as closest in over 85% of births and the same CEmOC facility in over 97% of births (Table 6).

The mean absolute distance deviance (comparing distances from compounds and villages) for the Euclidean measure was 250 m to closest delivery facility and 300 m

Table 5 Spearman rank correlation coefficients (r) between different impedance measures and same health facility identified as closest using different impedance measures (%) for impedance measures calculated to closest CEmOC facility

	Euclidean distance		Network distance		Mechanized network time		Non-mechanized network time		Mechanized raster time	
	r	%	r	%	r	%	r	%	r	%
Compound as origin¹										
Network distance (km)	0.9849	91.6	1							
Mechanized network time (hr)	0.7388	89.4	0.7852	91.0	1					
Non-mechanized network time (hr)	0.9805	91.6	0.9980	100	0.8116	97.0	1			
Mechanized raster time (hr)	0.5333	68.5	0.5847	73.4	0.8868	67.8	0.6171	68.7	1	
Non-mechanized raster time (hr)	0.9680	90.4	0.9852	97.8	0.8439	88.5	0.9923	90.7	0.6749	73.6
Village as origin²										
Network distance (km)	0.9714	84.8	1							
Mechanized network time (hr)	0.7115	87.3	0.7576	87.5	1					
Non-mechanized network time (hr)	0.9707	84.8	0.9996	100	0.7703	87.5	1			
Mechanized raster time (hr)	0.6287	65.6	0.6794	65.4	0.9417	75.5	0.6931	65.4	1	
Non-mechanized raster time (hr)	0.9703	84.1	0.9949	98.6	0.7905	87.1	0.9966	98.6	0.7232	65.8

¹n = 47,537 compounds ²n = 433 villages; n = 8 CEmOC facilities.

Table 6 Spearman rank correlation coefficients (r) and proportion of facilities identified as closest (%) between measures calculated from compound compared to measures calculated from village centroid, n = 9,306 births

Distance measure	Closest delivery facility		Closest CEmOC facility	
	r	%	r	%
Euclidean (km)	0.8296	87.8	0.9647	97.7
Network distance (km)	0.8263	88.6	0.9680	98.7
Mechanized network time (hr)	0.7071	86.2	0.8512	97.5
Non-mechanized network time (hr)	0.8324	88.6	0.9708	98.7
Mechanized raster time (hr)	0.5243	86.7	0.6580	97.4
Non-mechanized raster time (hr)	0.8377	85.7	0.9672	98.7

to closest CEmOC facility (Table 7). There was a larger difference in network distance estimates, 380 m to closest delivery facility and 460 m to closest CEmOC facility. The non-mechanized raster time measure showed the largest difference in time estimates, with a 12 minute difference to the closest delivery facility, and a 14 minute difference to CEmOC. For 90% of the births in the surveillance dataset, the deviance between measures calculated from village and compound was less than 30 minutes for any of the time measures to closest delivery facility, and less than 35 minutes to the closest CEmOC facility. The means and standard deviations of the impedance values calculated from village centroid and compound in the surveillance dataset were almost exactly the same (Table 8).

Association with facility use

We modeled the association between each impedance measure and facility delivery as a binary outcome, with

the assumption that the best proxy for access to care would show the strongest association with use of a facility for delivery. Effect estimates (odds ratios) for facility use were the same for all non-mechanized impedance measures from compound to closest delivery facility (Table 8): the odds of women delivering in a health facility decreased by 67% per standard deviation (SD) increase in each measure to closest delivery facility (OR = 0.33). When calculated from village centroid, the effect of non-mechanized network and raster time was slightly smaller than when calculated from compound as origin. There was less evidence of an association and a smaller effect with mechanized measures from both origins (e.g. OR 0.91; 95%CI 0.65-1.27; p = 0.569 for mechanized raster time from village centroid; Table 8).

We modeled access to any delivery facility and access to CEmOC separately because of the longer distances to CEmOC facilities, and found that effect estimates followed a similar pattern for both facility types. All non-mechanized measures suggest an approximately 55% decrease in odds of delivering in a health facility per SD increase in measure to the closest CEmOC (from both origins), with Euclidean distance showing the largest effect (OR = 0.41 95%CI 0.33-0.50, Table 8). Again, time measures incorporating driving showed a smaller effect.

As a sensitivity analysis, we also modeled the association of these impedance measures with facility delivery using quintiles, log-transformed and binarized measures, as well as adjusting for several potential confounders (age, parity, wealth quintile) with similar results (data not shown).

Discussion

We comprehensively compared six commonly used measures of travel impedance in a predominantly rural area in

Table 7 Absolute difference in measures to closest delivery facility calculated from compound compared to measures calculated from village centroid, n = 9,306 births

Distance to closest delivery facility ¹	Mean (SD)	Median (IQR)	90%	95%	Range
Euclidean (km)	0.25 (0.24)	0.18 (0.08-0.34)	0.57	0.74	8.34E-06 - 2.64
Network distance (km)	0.38 (0.35)	0.28 (0.13-0.52)	0.84	1.11	0.000098 - 2.87
Mechanized network time (hr)	0.092 (0.10)	0.057 (0.025-0.12)	0.22	0.31	5.66E-07 - 0.74
Non-mechanized network time (hr)	0.13 (0.12)	0.09 (0.041-0.17)	0.30	0.39	0.000041 - 0.85
Mechanized raster time (hr)	0.17 (0.23)	0.16 (0.0042-0.18)	0.46	0.57	0 - 2.22
Non-mechanized raster time (hr)	0.20 (0.25)	0.13 (0.50-0.24)	0.48	0.69	0 - 2.42
Distance to closest CEmOC ²	Mean (SD)	Median (IQR)	90%	95%	Range
Euclidean (km)	0.30 (0.31)	0.20 (0.09-0.41)	0.69	0.96	0.000094 - 2.94
Network distance (km)	0.46 (0.48)	0.30 (0.13-0.63)	1.12	1.48	9.54E-06 - 3.21
Mechanized network time (hr)	0.083 (0.089)	0.055 (0.024-0.11)	0.20	0.26	8.94E-07 - 0.69
Non-mechanized network time (hr)	0.14 (0.14)	0.10 (0.013-0.19)	0.35	0.46	3.48E-05 - 0.94
Mechanized raster time (hr)	0.18 (0.25)	0.16 (0.005-0.18)	0.50	0.68	0 - 2.22
Non-mechanized raster time (hr)	0.23 (0.27)	0.15 (0.050-0.30)	0.58	0.79	0 - 2.04

¹n=64 delivery facilities; ²n=8 CEmOC facilities.

Table 8 Mean, standard deviation and effect of measures to closest facility on use of facility for delivery, n = 9,306 births

Distance to closest delivery facility	Compound as origin			Village centroid as origin		
	Mean (SD)	OR (95% CI)	p-value	Mean (SD)	OR (95% CI)	p-value
Euclidean (km)	3.09 (4.67)	0.33 (0.27-0.40)	<0.001	3.09 (4.68)	0.33 (0.27-0.40)	<0.001
Network distance(km)	3.85 (5.39)	0.33 (0.26-0.42)	<0.001	3.73 (5.40)	0.33 (0.26-0.43)	<0.001
Mechanized network time (hr)	0.25 (0.17)	0.74 (0.55-0.98)	0.038	0.20 (0.17)	0.84 (0.60-1.17)	0.30
Non-mechanized network time (hr)	1.06 (1.34)	0.33 (0.26-0.43)	<0.001	1.01 (1.34)	0.34 (0.27-0.43)	<0.001
Mechanized raster time (hr)	0.28 (0.26)	0.71 (0.58-0.87)	0.001	0.23 (0.26)	0.91 (0.65-1.27)	0.57
Non-mechanized raster time (hr)	1.16 (1.43)	0.33 (0.26-0.43)	<0.001	1.12 (1.42)	0.53 (0.28-0.45)	<0.001
Distance to closest CEmOC	Mean (SD)	OR (95% CI)	p-value	Mean (SD)	OR (95% CI)	p-value
Euclidean (km)	12.40 (15.05)	0.41 (0.33-0.50)	<0.001	12.34 (15.03)	0.41 (0.33-0.50)	<0.001
Network distance (km)	14.94 (17.25)	0.45 (0.36-0.56)	<0.001	14.81 (17.20)	0.45 (0.36-0.56)	<0.001
Mechanized network time (hr)	0.41 (0.26)	0.50 (0.39-0.63)	<0.001	0.37 (0.24)	0.53 (0.42-0.68)	<0.001
Non-mechanized network time (hr)	3.83 (4.30)	0.45 (0.53-0.83)	<0.001	3.78 (4.28)	0.45 (0.36-0.46)	<0.001
Mechanized raster time (hr)	0.47 (0.35)	0.66 (0.32-0.72)	<0.001	0.40 (0.32)	0.76 (0.54-1.08)	0.122
Non-mechanized raster time (hr)	4.00 (4.43)	0.45 (0.36-0.46)	<0.001	3.93 (4.38)	0.46 (0.37-0.57)	<0.001

Note: all measures are standardized to mean = (approx.) 0 & standard deviation = 1.

Ghana's Brong Ahafo region as a case study for access measures in certain LMIC settings. We estimated the potential spatial aggregation error using average population location (village centroid) compared with individually geocoded location (compound). We assessed each measure as a proxy for potential spatial access, modeling the association between facility use and travel impedance measures to all delivery facilities and to CEmOC facilities, separately. We showed that measures calculated with different methods were highly correlated with each other, and identified the same facilities as closest for over 80% of villages, with the exception of mechanized cost. Measures calculated from individually geocoded locations (compounds) were highly correlated with measures calculated from village centroids, and identified the same facility as closest for over 85% of births and the same CEmOC facility as closest for approximately 98% of births in the surveillance data. Higher travel impedance was associated with lower facility use for delivery, and this association was of similar magnitude for all travel impedance measures except for mechanized travel.

In contrast to our results, two previous comparisons of distance measures in predominantly rural LMICs favored sophisticated measures over Euclidean distance. A study in Kenya compared models predicting use of specific facilities by febrile children, and found that the Euclidean distance model was less accurate than models using raster measures (called "transport network models" because they incorporated the transport network) [15]. However, the predictive accuracy of the Euclidean and unadjusted raster models was similar (kappa Euclidean 0.71 vs. kappa unadjusted raster 0.73); they differed more substantially

when the raster model was adjusted for competition between facilities (kappa 0.83). This suggests it could have been the adjustment for competition in facility types that increased the accuracy of the raster model rather than the access measure itself. In a study region in Ethiopia described as mountainous with a poor road network and difficult terrain, no association was found between under-five mortality and straight-line distance (p value = 0.398), compared to a strong association with actual distance travelled (p value = 0.016) [14]. As we found that Euclidean distance performed as well as the other measures in predicting the odds of facility use, we cannot conclude that it is always better to use sophisticated measures, but that it rather depends on context.

Travel time is determined by many factors in addition to distance, including mode of travel. Incorporating mechanized modes of transport into travel time measures makes assumptions about access to and use of motorized vehicles. For our travel time estimates, speeds were determined empirically for roads, and obtained from a globally available topographic map for land-cover. We assumed the same travel speeds for the entire population, and our estimates should be interpreted as an average estimate for the population as a whole. Assuming that access is a good predictor of facility use, the weaker associations between facility use and driving times indicate that either our road speeds were inaccurate, or that women in our study area do not travel by vehicle to delivery facilities. The reality of an individual woman's journey to a health facility may include multiple transport modes, such as a combination of walking, public transportation, and hiring taxis, which we were

unable to fully take into account due to lack of information on individual's travel modes.

Obtaining individually geocoded population locations is difficult due to issues of privacy and anonymity and in high-income countries accessibility is usually measured from aggregate locations, such as census tracts or zip codes. Aggregation error arises from the distribution of individuals in a spatial unit, and could affect associations with health outcomes measured on an individual level [20,38]. Results and interpretations vary widely in studies evaluating aggregation errors, and there does not seem to be a generally agreed upon cutoff for this error [38]. Authors of a study in the US comparing individual addresses to zip-code centroids conclude that a deviance <12 miles (19 km) for 95% of the population is not appreciably large [19], while a study in Canada found a deviance <1.5 km for 95% of the population, and considered the >1.5 km deviance for the remaining 5% a significant error [39]. Like other studies in Africa [13], we were able to collect individually geocoded locations and compared these to an aggregate measure, village centroid. While there were some extreme deviances (up to 3.2 km and 2.4 hours), the magnitude of the median deviance (e.g. 180 m Euclidean) was much smaller than the median value of the measures themselves (e.g. 910 m Euclidean). However, a different facility was identified as the closest using different origins for approximately 13% of the births in our surveillance dataset, which may have implications for access if these facilities offer different levels or types of care. The magnitude of this error obviously depends on the size of villages and the dispersion of compounds within villages, which varies with context. Deciding whether village centroids are a sufficient proxy for population location should be made based on the study area context as well as the research question.

As we do not have a gold standard with which to compare the various travel impedance measures to identify the "best" impedance measure, deciding which to use in an analysis is a matter of appropriateness and accuracy which can differ depending on the purpose of the analysis [39]. As all of the non-mechanized measures we included showed almost exactly the same association with facility use from both origins, we conclude that in similarly flat LMIC contexts, simple methods to calculate travel impedance can be reasonably used as proxies for potential spatial access. Euclidean distance is an accurate measure of the distance between two points and does not necessitate making any assumptions regarding mode of travel. For the purpose of comparing relative access to care as opposed to describing detailed journey paths, obtaining accurate estimates may be more important than aspiring to realism.

Conclusion

Apprehension towards using Euclidean distance as a proxy for access, and the high cost (in time and money) of

investing in sophisticated GIS techniques should not be a deterrent to research on access to care in rural low-income settings. Where poor access to care is a major barrier to health, this missing evidence may have real consequences for policy and populations. Using a case study in rural Ghana, we have shown that Euclidean distances from village centroids can be used as a reasonable proxy for individual potential spatial access, which can be generalized to other similar topographic and cultural contexts (i.e. non-mountainous regions, without major water bodies). The accuracy of sophisticated impedance measures depends on the quality of the input data and validity of assumptions regarding travel mode, and the possibility for error in these assumptions may decrease their usefulness. We suggest that for researchers faced with scarce and disparate data sources in relatively flat low-income countries, the use of Euclidean distance from an aggregate measure of population location is an acceptable proxy for access. Furthermore, we suggest that the extra time and effort required for sophisticated and individually geo-referenced methods are justifiable only when a high level of accuracy and completeness of the input data can be assured.

Competing interests

The authors declare that they have no competing interests.

Authors' contributions

RN processed and prepared the geospatial database for analyses, calculated the Euclidean and network based impedance measures, designed and carried out the statistical analyses and drafted the manuscript. SG developed the research question, supervised the statistical analyses and contributed to writing the manuscript. AL and BH calculated the raster based impedance measures, contributed to the design of the statistical analyses and contributed to the writing of the manuscript. CG supervised and coordinated the GIS data collection and developed the research question. SAE supervised and coordinated the GIS data collection. KW implemented the GIS data collection and supported the preparation of the geospatial database. SS, AM and BRK (with others) designed and conducted the Newhints study. All authors critically reviewed the manuscript, and approved the final manuscript as submitted.

Acknowledgements

We thank the staff and researchers at the Kintampo Health Research Center involved in data collection; all of the women who participated in the demographic surveillance; and the health workers who participated in the health facility survey.

During this work, RN was employed as a doctoral student by SG at Heidelberg University, funded by the Baden-Württemberg Foundation and the Heidelberg University Graduate Academy. SG was funded through a Margarete von Wrangell Fellowship supported by the European Social Fund and by the Ministry of Science, Research and the Arts Baden-Württemberg. She was also supported by postdoctoral fellowships of the Daimler and Benz Foundation and the Baden-Württemberg Foundation, the latter funded part of the fieldwork. SS, AM, BRK and SAE were funded under the Newhints study and NeoViTA project. These projects were funded by the Bill and Melinda Gates Foundation through the World Health Organization and the London School of Hygiene and Tropical Medicine. KW is supported by the Ghana Health Service through the Ghana Ministry of Health. The health facility assessment was partly funded by WHO, and Save the Children's Saving Newborn Lives program from the Bill and Melinda Gates Foundation, and the UK Department of International Development. The funders had no role in study design, data collection and analysis, decision to publish, or preparation of the manuscript. Finally, we acknowledge the financial support of the Deutsche Forschungsgemeinschaft and Heidelberg University within the Open Access Publishing program.

Author details

¹Epidemiology and Biostatistics Unit, Institute of Public Health, Heidelberg University, Heidelberg, Germany. ²Institute of Geography, Heidelberg University, Heidelberg, Germany. ³Maternal & Child Health Intervention Research Group, Faculty of Epidemiology and Population Health, London School of Hygiene and Tropical Medicine, London, UK. ⁴Kintampo Health Research Center, Ghana Health Service, Kintampo, Ghana. ⁵GIScience, Institute of Geography, Heidelberg University, Heidelberg, Germany. ⁶Department of Social and Environmental Health Research, London School of Hygiene and Tropical Medicine, London, UK.

Received: 14 April 2014 Accepted: 12 June 2014

Published: 26 June 2014

References

- Bhutta ZA, Black RE: **Global maternal, newborn, and child health—so near and yet so far.** *N Engl J Med* 2013, **369**(23):2226–2235.
- Gabrysch S, Campbell OM: **Still too far to walk: literature review of the determinants of delivery service use.** *BMC Pregnancy Childbirth* 2009, **9**:34.
- Gabrysch S, Cousens S, Cox J, Campbell OM: **The influence of distance and level of care on delivery place in rural Zambia: a study of linked national data in a geographic information system.** *PLoS Med* 2011, **8**(1):e1000394.
- Guagliardo MF: **Spatial accessibility of primary care: concepts, methods and challenges.** *Int J Health Geogr* 2004, **3**(1):3.
- Khan AA: **An integrated approach to measuring potential spatial access to health care services.** *Socioecon Plann Sci* 1992, **26**(4):275–287.
- Penchansky R, Thomas JW: **The concept of access: definition and relationship to consumer satisfaction.** *Med Care* 1981, **19**(2):127–140.
- Wang F, Luo W: **Assessing spatial and nonspatial factors for healthcare access: towards an integrated approach to defining health professional shortage areas.** *Health Place* 2005, **11**(2):131–146.
- Ray N, Ebener S: **AccessMod 3.0: computing geographic coverage and accessibility to health care services using anisotropic movement of patients.** *Int J Health Geogr* 2008, **7**:63.
- Delamater PL, Messina JP, Shortridge AM, Grady SC: **Measuring geographic access to health care: raster and network-based methods.** *Int J Health Geogr* 2012, **11**(1):15.
- Neis P, Zielstra D, Zipf A: **Comparison of volunteered geographic information data contributions and community development for selected world regions.** *Future Internet* 2013, **5**(2):282–300.
- Tanser FC, Le Sueur D: **The application of geographical information systems to important public health problems in Africa.** *Int J Health Geogr* 2002, **1**(1):4.
- Frizzelle BG, Evenson KR, Rodriguez DA, Laraia BA: **The importance of accurate road data for spatial applications in public health: customizing a road network.** *Int J Health Geogr* 2009, **8**:24.
- Tanser F, Gijsbertsen B, Herbst K: **Modelling and understanding primary health care accessibility and utilization in rural South Africa: an exploration using a geographical information system.** *Soc Sci Med* 2006, **63**(3):691–705.
- Okwaraji YB, Cousens S, Berhane Y, Mulholland K, Edmond K: **Effect of geographical access to health facilities on child mortality in rural Ethiopia: a community based cross sectional study.** *PLoS One* 2012, **7**(3):e33564.
- Noor AM, Amin AA, Gething PW, Atkinson PM, Hay SI, Snow RW: **Modelling distances travelled to government health services in Kenya.** *Trop Med Int Health* 2006, **11**(2):188–196.
- Costa LS, Nassi CD, Pinheiro RS, Almeida RMVR: **Accessibility of selected hospitals and medical procedures by means of aerial and transit network-based measures.** *Health Serv Manage Res* 2003, **16**(2):136–140.
- Cudnik MT, Yao J, Zive D, Newgard C, Murray AT: **Surrogate markers of transport distance for out-of-hospital cardiac arrest patients.** *Prehosp Emerg Care* 2012, **16**(2):266–272.
- Lian M, Struthers J, Schootman M: **Comparing GIS-based measures in access to mammography and their validity in predicting neighborhood risk of late-stage breast cancer.** *PLoS One* 2012, **7**(8):e43000.
- Jones SG, Ashby AJ, Momin SR, Naidoo A: **Spatial implications associated with using Euclidean distance measurements and geographic centroid imputation in health care research.** *Health Serv Res* 2010, **45**(1):316–327.
- Apparicio P, Abdelmajid M, Riva M, Shearmur R: **Comparing alternative approaches to measuring the geographical accessibility of urban health services: distance types and aggregation-error issues.** *Int J Health Geogr* 2008, **7**:7.
- Fone DL, Christie S, Lester N: **Comparison of perceived and modelled geographical access to accident and emergency departments: a cross-sectional analysis from the Caerphilly Health and Social Needs Study.** *Int J Health Geogr* 2006, **5**:16.
- Haynes R, Jones AP, Sauerzapf V, Zhao H: **Validation of travel times to hospital estimated by GIS.** *Int J Health Geogr* 2006, **5**:40.
- Fortney PD, Rost J, Warren J: **Comparing alternative methods of measuring geographic access to health services.** *Health Serv Outcomes Res Methodol* 2000, **1**(2):173–184.
- European Space Agency: *GlobCover*. [http://due.esrin.esa.int/globcover/] Last Accessed: March 5, 2014.
- Global Environment Monitoring Unit - Joint Research Centre of the European Commission: *Travel time to major cities: A global map of Accessibility*. [http://bioval.jrc.ec.europa.eu/products/gam/sources.htm] Last Accessed: March 10, 2014.
- Lozano R, Wang H, Foreman KJ, Rajaratnam JK, Naghavi M, Marcus JR, Dwyer-Lindgren L, Lofgren KT, Phillips D, Atkinson C, Lopez AD, Murray CJ: **Progress towards Millennium Development Goals 4 and 5 on maternal and child mortality: an updated systematic analysis.** *Lancet* 2011, **378**(9797):1139–1165.
- Edmond K, Hurt L, Fenty J, Amenga-Etego S, Zandoh C, Hurt C, Danso S, Tawiah C, Hill Z, Ten Asbroek AH, Owusu-Agyei S, Campbell O, Kirkwood BR: **Effect of vitamin A supplementation in women of reproductive age on cause-specific early and late infant mortality in rural Ghana: ObaapaVITA double-blind, cluster-randomised, placebo-controlled trial.** *BMJ Open* 2012, **2**(1):e000658.
- Kirkwood BR, Manu A, ten Asbroek AH, Soremekun S, Weobong B, Gyan T, Danso S, Amenga-Etego S, Tawiah-Agyemang C, Owusu-Agyei S, Hill Z: **Effect of the Newhints home-visits intervention on neonatal mortality rate and care practices in Ghana: a cluster randomised controlled trial.** *Lancet* 2013, **381**(9884):2184–2192.
- Kirkwood BR, Manu A, Tawiah-Agyemang C, ten Asbroek G, Gyan T, Weobong B, Lewandowski RE, Soremekun S, Danso S, Pitt C: **NEWHINTS cluster randomised trial to evaluate the impact on neonatal mortality in rural Ghana of routine home visits to provide a package of essential newborn care interventions in the third trimester of pregnancy and the first week of life: trial protocol.** *Trials* 2010, **11**:58.
- Ghana Statistical Service: *Ghana 2003 Core Welfare Indicators Questionnaire (CWIQ II) Survey Report: Statistical Abstract In*. Ghana Statistical Service: Accra; 2003.
- Neteler M, Bowman MH, Landa M, Metz M: **GRASS GIS: a multi-purpose open source GIS.** *Environ Model Softw* 2012, **31**:124–130.
- Bailey PE, Keyes EB, Parker C, Abdullah M, Kebede H, Freedman L: **Using a GIS to model interventions to strengthen the emergency referral system for maternal and newborn health in Ethiopia.** *Int J Gynaecol Obstetr* 2011, **115**(3):300–309.
- Gething PW, Johnson FA, Frempong-Ainguh F, Nyarko P, Baschieri A, Aboagye P, Falkingham J, Matthews Z, Atkinson PM: **Geographical access to care at birth in Ghana: a barrier to safe motherhood.** *BMC Public Health* 2012, **12**:991.
- World Health Organization (WHO): *Monitoring Emergency Obstetric Care. A Handbook*. 2009.
- Vesel L, Manu A, Lohela TJ, Gabrysch S, Okyere E, Ten Asbroek AH, Hill Z, Agyemang CT, Owusu-Agyei S, Kirkwood BR: **Quality of newborn care: a health facility assessment in rural Ghana using survey, vignette and surveillance data.** *BMJ Open* 2013, **3**(5):e002326.
- Nesbitt RC, Lohela TJ, Manu A, Vesel L, Okyere E, Edmond K, Owusu-Agyei S, Kirkwood BR, Gabrysch S: **Quality along the continuum: a health facility assessment of intrapartum and postnatal care in Ghana.** *PLoS One* 2013, **8**(11):e81089.
- Metz M, Mitasova H, Harmon RS: **Efficient extraction of drainage networks from massive, radar-based elevation models with least cost path search.** *Hydrol Earth Syst Sc* 2011, **15**(2):667–678.
- Luo L, McLafferty S, Wang F: **Analyzing spatial aggregation error in statistical models of late-stage cancer risk: a Monte Carlo simulation approach.** *Int J Health Geogr* 2010, **9**:51.
- Apparicio P, Shearmur R, Brochu M, Dussault G: **The measure of distance in a social science policy context: advantages and costs of using network distances in eight Canadian metropolitan areas.** *J Geogr Inf Decis Anal* 2003, **7**(2):105–131.

doi:10.1186/1476-072X-13-25

Cite this article as: Nesbitt et al.: Methods to measure potential spatial access to delivery care in low- and middle-income countries: a case study in rural Ghana. *International Journal of Health Geographics* 2014 **13**:25.