

Identification of fifteen new psoriasis susceptibility loci highlights the role of innate immunity

Lam C Tsoi*, Sarah L Spain*, Jo Knight*, Eva Ellinghaus*, Philip E Stuart, Francesca Capon, Jun Ding, Yanming Li, Trilokraj Tejasvi, Johann E. Gudjonsson, Hyun M Kang, Michael H Allen, Ross McManus, Giuseppe Novelli, Lena Samuelsson, Joost Schalkwijk, Mona Stähle, A. David Burden, Catherine H Smith, Michael J Cork, Xavier Estivill, Anne M Bowcock, Gerald G. Krueger, Wolfgang Weger, Jane Worthington, Rachid Tazi-Ahnini, Frank O Nestle, Adrian Hayday, Per Hoffmann, Juliane Winkelmann, Cisca Wijmenga, Cordelia Langford, Sarah Edkins, Robert Andrews, Hannah Blackburn, Amy Strange, Gavin Band, Richard D Pearson, Damjan Vukcevic, Chris CA Spencer, Panos Deloukas, Ulrich Mrowietz, Stefan Schreiber, Stephan Weidinger, Sulev Koks, Külli Kingo, Tonu Esko, Andres Metspalu, Henry W Lim, John J Voorhees, Michael Weichenthal, H. Erich Wichmann, Vinod Chandran, Cheryl F Rosen, Proton Rahman, Dafna D Gladman, Christopher EM Griffiths, Andre Reis, Juha Kere, Collaborative Association Study of Psoriasis, Genetic Analysis of Psoriasis Consortium, Psoriasis Association Genetics Extension, Wellcome Trust Case Control Consortium 2, Rajan P Nair, Andre Franke, Jonathan NWN Barker, Goncalo R Abecasis[‡], James T Elder[‡], Richard C Trembath[‡]

*These authors contributed equally to this work

‡Corresponding authors:

Richard C. Trembath, Division of Genetics and Molecular Medicine, King's College London School of Medicine, Guy's Hospital, London SE1 9RT. UK; Queen Mary University of London, Barts and the London School of Medicine and Dentistry, London E1 2AD, UK, email vp-health@qmul.ac.uk

Goncalo R. Abecasis, Department of Biostatistics, School of Public Health M4614 SPH I, University of Michigan, Box 2029, Ann Arbor, MI 48109-2029, USA, phone (734) 763-4901, email goncalo@umich.edu

James T. Elder, 7412 Medical Sciences Building 1, University of Michigan Medical School, 1301 E. Catherine, Ann Arbor, Michigan 48109-5675, USA, phone (734) 647-8070, email jelder@umich.edu

Supplementary Tables	3
Supplementary Table 1. Description of the 5 datasets used in the meta-analysis	3
Supplementary Table 2. Description of individual ImmunoChip samples.....	3
Supplementary Table 3. Association results for each of the 5 studies for the most strongly associated SNPs.....	4
Supplementary Table 4. Disease overlap and SNP functional annotation for the known and newly identified SNPs.	6
Supplementary Table 5. Association results for rs892085.....	9
Supplementary Table 6. Significant results for the meta-conditional analysis	10
Supplementary Table 7. Association results for the most significant SNPs of the 5 significant loci in the conditional analysis for each of the datasets.	11
Supplementary Table 8. Epistasis results.....	12
Supplementary Table 9. Differential expression analysis results for genes in each of the 39 psoriasis loci identified by the primary or conditional association analysis.....	13
Supplementary Table 10. Variance in liability	16
Supplementary Figures	17
Supplementary Figure 1: Manhattan plot for meta-analysis.....	17
Supplementary Figure 2. Regional association plots	18
Supplementary Figure 3. Manhattan plot for the results of the conditional analysis.	21
Supplementary Figure. 4. Regional association plots for the significant loci in the conditional meta-analysis.....	22
Supplementary Figure 5. Plots illustrating the phenotype overlap for the susceptibility variants listed in Table 1.....	23
Supplementary note	25
Membership of Contributing Consortia	25
Grant Support Acknowledgments.....	30
Additional Methods and results	31
References	34

Supplementary Tables

Supplementary Table 1. Description of the 5 datasets used in the meta-analysis

Study	Cases (N)	Controls (N)	Total	λ_{GC}
Kiel ¹	474	1,146	1,620	1.09
CASP ²	1,359	1,400	2,759	1.06
WTCCC2 ³	2,178	5,175	7,353	1.04
PAGE	3,580	5,902	9,482	0.992
GAPC	2,997	9,183	12,180	0.963
TOTAL	10,588	22,806	33,394	1.11

Supplementary Table 2. Description of individual ImmunoChip samples

'Group' refers to the group that provided the samples and corresponds to the membership of consortia.

Dataset	Population Sample	Group (cases)	Group (controls)	Cases	Controls
PAGE ImmunoChip	USA	UMich/NPF/HFH	UMich/FIMR/NPF	1,351	2,694
	Canada	UToronto/MU	UToronto	362	20
	Estonia	UTartu/EGCUT	EGCUT	1,295	898
	Germany	CAU Kiel	CAU Kiel/KORA/HNR	572	2,290
	Total			3,580	5,902
GAPC ImmunoChip	UK	KCL/Glasgow/Sheffield	WTCCC2	207	4822
	Finland	Helsinki	DILGOM	240	490
	Spain	Barcelona	Barcelona	269	202
	The Netherlands	Nijmegen	Groningen	152	1,107
	Austria	Graz	-	310	0
	Sweden	Gothenburg/Stockholm	-	859	0
	Italy	Rome	Groningen	73	509
	Germany	Erlangen	PopGen	826	1,984
	Ireland	Dublin	Dublin	61	69
	Total			2,997	9,183

Supplementary Table 3. Association results for each of the 5 studies for the most strongly associated SNPs

Showing the 21 known and 15 newly identified loci. The overall OR was calculated using the effective sample size-weighted approach.

Known Loci				Kiel				CASP				WTCCC2				PAGE				GAPC					
SNP	Chr.	Position	Risk/ Non-risk allele	P	RAF (case)	RAF (ctrl)	OR (95% CI)	P	RAF (case)	RAF (ctrl)	OR (95% CI)	P	RAF (case)	RAF (ctrl)	OR (95% CI)	P	RAF (case)	RAF (ctrl)	OR (95% CI)	P	RAF (case)	RAF (ctrl)	OR (95% CI)	Combined P-value	OR (meta)
rs7552167	1	24,518,643	G/A	8.0x10 ⁻¹	0.86	0.86	1.03 (0.83-1.28)	1.1x10 ⁻²	0.88	0.86	1.29 (1.06-1.57)	1.6x10 ⁻⁴	0.89	0.86	1.24 (1.11-1.38)	4.5x10 ⁻⁵	0.87	0.85	1.22 (1.12-1.33)	4.6x10 ⁻⁴	0.88	0.86	1.20 (1.09-1.31)	8.5x10 ⁻¹²	1.21
rs9988642	1	67,726,104	T/C	9.5x10 ⁻⁴	0.95	0.92	1.79 (1.24-2.57)	2.4x10 ⁻⁷	0.95	0.91	1.82 (1.44-2.29)	2.6x10 ⁻⁶	0.95	0.93	1.45 (1.24-1.69)	3.8x10 ⁻⁹	0.95	0.93	1.43 (1.25-1.64)	1.8x10 ⁻⁸	0.96	0.93	1.53 (1.33-1.76)	1.1x10 ⁻²⁶	1.52
rs6677595	1	152,590,187	T/C	2.4x10 ⁻⁴	0.68	0.62	1.36 (1.15-1.61)	7.6x10 ⁻⁴	0.68	0.64	1.22 (1.09-1.37)	2.7x10 ⁻¹⁰	0.71	0.65	1.29 (1.19-1.40)	2.7x10 ⁻⁷	0.67	0.63	1.18 (1.10-1.26)	2.8x10 ⁻¹⁵	0.70	0.65	1.31 (1.22-1.40)	2.1x10 ⁻³³	1.26
rs62149416	2	61,083,506	T/C	2.5x10 ⁻¹	0.67	0.65	1.10 (0.93-1.29)	1.8x10 ⁻⁴	0.68	0.64	1.25 (1.11-1.40)	1.4x10 ⁻⁷	0.69	0.64	1.24 (1.14-1.34)	7.2x10 ⁻⁴	0.66	0.64	1.12 (1.05-1.19)	6.3x10 ⁻⁷	0.67	0.63	1.16 (1.08-1.23)	1.8x10 ⁻¹⁷	1.17
rs17716942	2	163,260,691	T/C	8.6x10 ⁻²	0.90	0.88	1.24 (0.97-1.59)	3.0x10 ⁻²	0.88	0.86	1.19 (1.02-1.40)	3.4x10 ⁻⁹	0.90	0.86	1.38 (1.23-1.54)	6.7x10 ⁻⁹	0.90	0.86	1.31 (1.20-1.45)	8.2x10 ⁻⁴	0.88	0.86	1.18 (1.08-1.29)	3.3x10 ⁻¹⁸	1.27
rs27432	5	96,119,273	A/G	9.8x10 ⁻²	0.31	0.28	1.15 (0.97-1.35)	1.3x10 ⁻¹	0.30	0.28	1.10 (0.97-1.23)	5.2x10 ⁻⁹	0.31	0.27	1.26 (1.16-1.37)	1.1x10 ⁻⁵	0.30	0.27	1.16 (1.09-1.24)	6.4x10 ⁻¹⁰	0.32	0.28	1.23 (1.15-1.32)	1.9x10 ⁻²⁰	1.20
rs1295685	5	131,996,445	G/A	4.2x10 ⁻¹	0.80	0.78	1.08 (0.89-1.31)	1.5x10 ⁻⁶	0.83	0.78	1.41 (1.22-1.61)	2.1x10 ⁻²	0.84	0.82	1.12 (1.02-1.24)	8.6x10 ⁻³	0.78	0.78	1.15 (1.06-1.23)	1.9x10 ⁻⁴	0.81	0.80	1.20 (1.11-1.30)	3.4x10 ⁻¹⁰	1.18
rs2233278	5	150,467,189	C/G	5.3x10 ⁻²	0.07	0.05	1.39 (1.00-1.92)	5.5x10 ⁻⁸	0.09	0.06	1.86 (1.48-2.34)	5.5x10 ⁻¹¹	0.09	0.06	1.68 (1.44-1.96)	2.7x10 ⁻¹⁴	0.10	0.06	1.54 (1.37-1.72)	2.8x10 ⁻¹⁴	0.08	0.05	1.54 (1.37-1.74)	2.2x10 ⁻⁴²	1.59
rs12188300	5	158,829,527	T/A	8.1x10 ⁻⁶	0.15	0.11	1.80 (1.39-2.33)	1.9x10 ⁻⁷	0.14	0.10	1.68 (1.38-2.05)	8.6x10 ⁻¹⁴	0.15	0.11	1.64 (1.44-1.86)	6.9x10 ⁻²¹	0.13	0.08	1.58 (1.43-1.75)	2.1x10 ⁻¹³	0.12	0.09	1.48 (1.34-1.63)	3.2x10 ⁻⁵³	1.58
rs4406273	6	31,266,090	A/G	4.2x10 ⁻⁴²	0.28	0.11	5.18 (4.04-6.63)	3.1x10 ⁻⁵³	0.23	0.11	4.13 (3.41-4.99)	1.3x10 ⁻²²⁹	0.29	0.09	6.33 (5.66-7.08)	1.8x10 ⁻¹⁶⁹	0.25	0.09	3.35 (3.06-3.67)	6.9x10 ⁻²⁶⁵	0.27	0.09	4.24 (3.88-4.64)	4.5x10 ⁻⁷²³	4.32
rs33980500	6	111,913,262	T/C	5.8x10 ⁻⁵	0.12	0.07	1.67 (1.31-2.14)	3.3x10 ⁻⁴	0.10	0.07	1.42 (1.17-1.72)	3.5x10 ⁻¹⁵	0.11	0.07	1.72 (1.50-1.97)	5.2x10 ⁻¹⁰	0.11	0.08	1.38 (1.25-1.53)	3.6x10 ⁻¹⁹	0.11	0.07	1.54 (1.39-1.71)	4.2x10 ⁻⁴⁵	1.52
rs582757	6	138,197,824	C/T	5.9x10 ⁻⁴	0.33	0.27	1.34 (1.14-1.59)	6.5x10 ⁻⁶	0.32	0.27	1.31 (1.16-1.47)	3.5x10 ⁻⁹	0.31	0.27	1.26 (1.16-1.37)	1.7x10 ⁻⁶	0.31	0.27	1.17 (1.09-1.25)	4.0x10 ⁻⁸	0.32	0.28	1.22 (1.14-1.31)	2.2x10 ⁻²⁵	1.23
rs1250546	10	81,032,532	A/G	3.7x10 ⁻²	0.65	0.61	1.19 (1.01-1.39)	4.7x10 ⁻⁴	0.61	0.56	1.21 (1.09-1.35)	1.9x10 ⁻¹	0.59	0.58	1.05 (0.97-1.14)	1.1x10 ⁻²	0.61	0.59	1.09 (1.03-1.16)	4.6x10 ⁻³	0.60	0.57	1.09 (1.03-1.16)	6.8x10 ⁻⁷	1.10
rs645078	11	64,135,298	A/C	4.2x10 ⁻¹	0.63	0.61	1.07 (0.91-1.25)	4.8x10 ⁻³	0.64	0.60	1.17 (1.05-1.31)	1.4x10 ⁻¹	0.62	0.61	1.06 (0.98-1.14)	1.7x10 ⁻³	0.63	0.61	1.12 (1.05-1.19)	6.4x10 ⁻²	0.62	0.61	1.06 (0.98-1.13)	2.2x10 ⁻⁶	1.09
rs2066819	12	56,750,204	C/T	6.4x10 ⁻²	0.95	0.93	1.41 (0.97-2.03)	2.0x10 ⁻⁵	0.96	0.94	1.84 (1.38-2.44)	9.3x10 ⁻⁹	0.95	0.94	1.57 (1.33-1.85)	4.1x10 ⁻⁴	0.94	0.93	1.27 (1.12-1.44)	6.4x10 ⁻⁵	0.95	0.94	1.28 (1.12-1.47)	5.4x10 ⁻¹⁷	1.39
rs8016947	14	35,832,666	G/T	6.8x10 ⁻⁴	0.64	0.57	1.31 (1.12-1.53)	5.5x10 ⁻³	0.59	0.55	1.16 (1.05-1.30)	4.6x10 ⁻⁶	0.61	0.57	1.19 (1.11-1.29)	2.6x10 ⁻⁴	0.59	0.56	1.12 (1.05-1.19)	1.1x10 ⁻⁶	0.60	0.56	1.17 (1.10-1.25)	2.5x10 ⁻¹⁷	1.16
rs12445568	16	31,004,812	C/T	1.6x10 ⁻³	0.43	0.37	1.28 (1.10-1.49)	1.2x10 ⁻³	0.40	0.36	1.21 (1.08-1.36)	5.2x10 ⁻³	0.40	0.37	1.12 (1.03-1.20)	1.4x10 ⁻⁶	0.41	0.37	1.16 (1.09-1.23)	2.9x10 ⁻⁶	0.40	0.37	1.16 (1.09-1.24)	1.2x10 ⁻¹⁶	1.16
rs28998802	17	26,124,908	A/G	4.0x10 ⁻³	0.20	0.16	1.36 (1.11-1.68)	3.2x10 ⁻²	0.18	0.16	1.18 (1.01-1.38)	7.7x10 ⁻⁴	0.18	0.16	1.20 (1.08-1.34)	2.0x10 ⁻⁹	0.16	0.13	1.27 (1.17-1.38)	9.1x10 ⁻⁵	0.16	0.14	1.18 (1.08-1.28)	3.3x10 ⁻¹⁶	1.22
rs34536443	19	10,463,118	G/C	1.3x10 ⁻²	0.97	0.95	1.77 (1.11-2.81)	NA	NA	NA	NA	4.7x10 ⁻⁹	0.97	0.95	1.81 (1.48-2.21)	3.4x10 ⁻¹⁰	0.98	0.96	1.76 (1.46-2.10)	9.0x10 ⁻¹⁴	0.98	0.95	2.09 (1.72-2.54)	9.1x10 ⁻³¹	1.88
rs1056198	20	48,556,229	C/T	3.5x10 ⁻¹	0.59	0.57	1.07 (0.92-1.25)	2.4x10 ⁻⁴	0.63	0.58	1.22 (1.10-1.36)	1.6x10 ⁻⁶	0.63	0.58	1.20 (1.11-1.30)	4x10 ⁻⁶	0.59	0.57	1.17 (1.10-1.25)	4.9x10 ⁻³	0.58	0.57	1.11 (1.05-1.18)	1.5x10 ⁻¹⁴	1.16
rs4821124	22	21,979,289	C/T	1.2x10 ⁻¹	0.22	0.19	1.17 (0.96-1.41)	8.9x10 ⁻²	0.22	0.20	1.12 (0.98-1.29)	5.2x10 ⁻⁴	0.20	0.18	1.19 (1.08-1.31)	2.0x10 ⁻⁴	0.20	0.18	1.16 (1.07-1.25)	8.4x10 ⁻²	0.22	0.20	1.06 (0.98-1.14)	3.8x10 ⁻⁸	1.13

Newly Identified Loci				Kiel			CASP			WTCCC2			PAGE			GAPC			Combined						
SNP	Chr.	Position	Risk/ Non-risk allele	P	RAF (case)	RAF (ctrl)	OR (95% CI)	P	RAF (case)	RAF (ctrl)	OR (95% CI)	P	RAF (case)	RAF (ctrl)	OR (95% CI)	P	RAF (case)	RAF (ctrl)	OR (95% CI)	P-value	OR (meta)				
rs11121129	1	8,268,095	A/G	9.2x10 ⁻³	0.31	0.27	1.25 (1.06-1.47)	3.2x10 ⁻²	0.30	0.28	1.14 (1.01-1.29)	9.0x10 ⁻³	0.33	0.30	1.11 (1.03-1.20)	1.4x10 ⁻¹	0.29	0.28	1.06 (0.99-1.13)	2.1x10 ⁻⁵	0.31	0.29	1.20 (1.12-1.28)	1.7x10 ⁻⁸	1.13
rs7536201	1	25,293,084	C/T	1.5x10 ⁻¹	0.51	0.48	1.12 (0.96-1.32)	3.3x10 ⁻²	0.52	0.49	1.12 (1.01-1.25)	1.8x10 ⁻³	0.54	0.50	1.13 (1.05-1.21)	1.4x10 ⁻⁷	0.53	0.49	1.16 (1.09-1.23)	3.2x10 ⁻³	0.52	0.50	1.11 (1.05-1.18)	2.3x10 ⁻¹²	1.13
rs10865331	2	62,551,472	A/G	4.8x10 ⁻¹	0.38	0.37	1.06 (0.91-1.23)	2.0x10 ⁻²	0.41	0.38	1.14 (1.02-1.27)	5.9x10 ⁻³	0.40	0.37	1.11 (1.03-1.20)	6.0x10 ⁻⁸	0.41	0.38	1.19 (1.12-1.26)	6.0x10 ⁻²	0.39	0.37	1.08 (1.01-1.15)	4.7x10 ⁻¹⁰	1.12
rs9504361	6	577,820	A/G	1.5x10 ⁻²	0.58	0.54	1.21 (1.04-1.42)	4.0x10 ⁻²	0.57	0.54	1.12 (1.01-1.25)	3.6x10 ⁻⁵	0.60	0.55	1.17 (1.09-1.27)	2.8x10 ⁻²	0.57	0.55	1.06 (1.00-1.13)	1.7x10 ⁻⁵	0.57	0.54	1.14 (1.07-1.21)	2.1x10 ⁻¹¹	1.12
rs2451258	6	159,506,600	C/T	9.4x10 ⁻¹	0.33	0.33	1.01 (0.86-1.18)	1.3x10 ⁻²	0.38	0.34	1.15 (1.03-1.29)	3.2x10 ⁻³	0.40	0.37	1.12 (1.04-1.21)	3.9x10 ⁻⁴	0.34	0.33	1.14 (1.07-1.22)	1.3x10 ⁻²	0.36	0.35	1.11 (1.04-1.18)	3.4x10 ⁻⁸	1.12
rs2700987	7	37,386,237	A/C	7.8x10 ⁻²	0.61	0.57	1.16 (0.98-1.36)	1.8x10 ⁻²	0.59	0.56	1.14 (1.02-1.27)	1.4x10 ⁻⁵	0.61	0.56	1.18 (1.10-1.27)	1.2x10 ⁻²	0.58	0.57	1.09 (1.02-1.16)	1.5x10 ⁻²	0.59	0.57	1.07 (1.01-1.14)	4.3x10 ⁻⁹	1.11
rs11795343	9	32,523,737	T/C	2.3x10 ⁻³	0.65	0.59	1.28 (1.09-1.49)	4.7x10 ⁻³	0.63	0.60	1.17 (1.05-1.30)	4.8x10 ⁻⁴	0.64	0.60	1.15 (1.06-1.24)	7.2x10 ⁻⁵	0.63	0.60	1.12 (1.05-1.19)	3.9x10 ⁻²	0.61	0.60	1.05 (0.99-1.12)	8.4x10 ⁻¹¹	1.11
rs10979182	9	110,817,020	A/G	6.9x10 ⁻³	0.64	0.59	1.24 (1.06-1.45)	5.9x10 ⁻²	0.61	0.59	1.11 (1.00-1.24)	2.4x10 ⁻³	0.63	0.59	1.13 (1.04-1.22)	1.3x10 ⁻²	0.61	0.59	1.08 (1.02-1.15)	3.2x10 ⁻³	0.61	0.59	1.12 (1.06-1.20)	2.3x10 ⁻⁸	1.12
rs4561177	11	109,962,432	A/G	9.0x10 ⁻¹	0.59	0.60	1.01 (0.87-1.18)	3.8x10 ⁻²	0.61	0.59	1.12 (1.01-1.25)	1.6x10 ⁻⁴	0.61	0.57	1.15 (1.07-1.24)	3.1x10 ⁻⁵	0.61	0.58	1.13 (1.07-1.21)	1.1x10 ⁻⁵	0.63	0.58	1.16 (1.09-1.24)	7.7x10 ⁻¹³	1.14
rs3802826	11	128,406,438	A/G	2.3x10 ⁻¹	0.51	0.48	1.10 (0.94-1.28)	4.2x10 ⁻²	0.51	0.48	1.12 (1.00-1.24)	1.7x10 ⁻²	0.52	0.50	1.10 (1.02-1.18)	4.0x10 ⁻⁴	0.49	0.47	1.12 (1.06-1.19)	1.3x10 ⁻⁴	0.51	0.49	1.15 (1.08-1.22)	9.5x10 ⁻¹⁰	1.12
rs367569	16	11,365,500	C/T	2.5x10 ⁻¹	0.73	0.71	1.11 (0.93-1.31)	6.8x10 ⁻²	0.73	0.71	1.12 (0.99-1.27)	2.1x10 ⁻³	0.73	0.71	1.14 (1.05-1.24)	4.4x10 ⁻³	0.72	0.70	1.10 (1.03-1.18)	3.6x10 ⁻³	0.74	0.72	1.15 (1.07-1.23)	4.9x10 ⁻⁸	1.13
rs963986	17	40,561,579	C/G	9.6x10 ⁻⁴	0.19	0.15	1.43 (1.16-1.76)	2.7x10 ⁻²	0.17	0.15	1.19 (1.02-1.38)	3.2x10 ⁻²	0.17	0.16	1.12 (1.01-1.24)	7.0x10 ⁻²	0.16	0.15	1.07 (0.98-1.16)	1.3x10 ⁻⁵	0.18	0.16	1.22 (1.13-1.33)	5.3x10 ⁻⁹	1.15
rs11652075	17	78,178,893	C/T	5.8x10 ⁻¹	0.52	0.51	1.04 (0.90-1.21)	4.9x10 ⁻²	0.53	0.52	1.18 (1.00-1.40)	7.5x10 ⁻³	0.52	0.49	1.11 (1.03-1.19)	4.6x10 ⁻¹	0.52	0.52	1.02 (0.96-1.08)	2.2x10 ⁻⁸	0.55	0.50	1.19 (1.11-1.26)	3.4x10 ⁻⁸	1.11
rs545979	18	51,819,750	T/C	3.8x10 ⁻²	0.34	0.30	1.19 (1.01-1.40)	6.9x10 ⁻³	0.33	0.30	1.17 (1.04-1.31)	3.1x10 ⁻⁴	0.32	0.29	1.16 (1.07-1.26)	9.6x10 ⁻³	0.32	0.30	1.09 (1.02-1.17)	7.2x10 ⁻⁴	0.31	0.29	1.11 (1.04-1.19)	3.5x10 ⁻¹⁰	1.12
rs892085	19	10,818,092	A/G	3.2x10 ⁻²	0.62	0.58	1.19 (1.01-1.39)	1.5x10 ⁻³	0.58	0.55	1.27 (1.10-1.48)	1.0x10 ⁻⁴	0.57	0.54	1.16 (1.08-1.26)	2.2x10 ⁻³	0.60	0.57	1.10 (1.03-1.17)	4.2x10 ⁻¹⁰	0.60	0.56	1.20 (1.13-1.28)	3.0x10 ⁻¹⁷	1.17

Supplementary Table 4. Disease overlap and SNP functional annotation for the known and newly identified SNPs.

The 'disease overlap' is defined as an associated SNP identified in the same region (within 500kb) as the top psoriasis SNP (using NHGRI GWAS catalog and Immuchip results for Celiac disease⁴). Underlined entries have SNPs that are in LD ($r^2 > 0.7$) with the identified SNP. *denotes association of the same SNP in the same direction. AD: Atopic dermatitis, AS: Ankylosing spondylitis, BD: Behcet's disease, CD: Crohn's disease, CeD: Celiac disease, IgE: Serum IgE, IgA: Selective Immunoglobulin A deficiency, LE: Leprosy, MS: Multiple Sclerosis, PBC: Primary biliary cirrhosis, RA: Rheumatoid arthritis, SI: Soluble ICAM-1, SLE: Systemic lupus erythematosus, SS: Systemic sclerosis, T1D: Type I Diabetes, UC: Ulcerative colitis. Supplementary Figure 5 shows graphical view of the disease overlap.

SNP	Chr.	Position	Risk/ Non-risk allele	Variant Annotation	Disease Overlap (based on the GWAS catalog)	All genes in locus (+/- 500kb)
Known loci						
rs7552167	1	24,518,643	G/A	4878 bp upstream of IL28RA		LOC100132287;SRRM1;LOC100133331;CNR2;C1orf130;PNRC2;OR4F3;OR4F29; SFRS13A;RPL11;MYOM3;LOC284632;TCEB3;NIPAL3;C1orf128;C1orf201;HMGCL; GALE;IL22RA1;OR4F16;FUCA1;LOC100132062;IL28RA;LYPLA2;GRHL3;RCAN3
rs9988642	1	67,726,104	T/C	454 bp downstream of IL23R	<u>AS</u> , <u>UC</u> , <u>CD</u> , BD, LE, PBC	LOC100132287;LOC100133331;IL23R;GNG12;IL12RB2;MIER1;SLC35D1;C1orf141 ;INSL5;TCTEX1D1;WDR78;OR4F3;OR4F29;SERBP1;GADD45A; OR4F16; LOC100132062
rs6677595	1	152,590,187	T/C	3613 bp downstream of LCE3B		LOC100132287;LOC100133331;FLG;IVL;SPRR4;SPRR3;OR4F3;OR4F29;SPRR1A ;SPRR1B;RPTN;LCE2C;LCE2B;LCE2A;LCE2D;CRCT1;LCE4A;LCE6A;KPRP;FLG2; SMCP;C1orf68;CRNN;OR4F16;SPRR2E;SPRR2D;SPRR2F;SPRR2A;SPRR2B;LOC1 00132062;LCE1F;LCE1D;LCE1E;LCE1B;LCE1C;HRNR;LCE1A; LCE3D; LCE3E;LCE3A;LCE3B;LCE3C;LCE5A
rs62149416	2	61,083,506	T/C	FLJ16341 intron	<u>RA</u> , UC, CD, CeD	REL;USP34;PEX13;KIAA1841;AHSA2;PAPOLG;C2orf74;PUS10;BCL11A
rs17716942	2	163,260,691	T/C	KCNH7 intron	T1D, IgA	SLC4A10;IFIH1;FAP;KCNH7;GCG;GCA;DPP4
rs27432	5	96,119,273	A/G	ERAP1 intron	<u>AS</u> , CD	LNPEP;CAST;RIOK2;ERAP2;ERAP1;LIX1;PCSK1
rs1295685	5	131,996,445	G/A	IL13 3'UTR	IgE, CD, AD, platelet counts, C-reactive protein, eosinophil counts and fibrinogen	IL13; C5orf56; IRF1; ANKRD43; IL4; IL5; AFF4 ;HSPA4; UQCRCQ; ZCCHC10; SLC22A4;SLC22A5;CCNI2;GDF9;P4HA2;KIF3A;PDLIM4;SHROOM1; LEAP2; SEPT8;RAD50
rs2233278	5	150,467,189	C/G	TNIP1 5'UTR	SLE, SS, CD	SLC36A3;SLC36A1;SLC36A2;MYOZ3;RBM22;TNIP1;GPX3;ZNF300;IRGM;LOC134 466;ANXA6;CCDC69;SYNPO;FAT2;DCTN4;C5orf62;GM2A
rs12188300	5	158,829,527	T/A	Intergenic	MS, CD, AS, UC	LOC285627;IL12B;UBLCP1;EBF1;RNF145
rs4406273	6	31,266,090	A/G	Intergenic	UC, AS, SS, SLE, Vitiligo, AIDS progression, Grave's Disease, Hepatitis B vaccine response, Follicular lymphoma, CD4:CD8 lymphocyte ratio	MUC21;LY6G6C;LY6G6D;HLA-B; SFTA2; APOM; DPCR1; LY6G5C; PSORS1C2; CLIC1; AIF1; LY6G6E; LY6G6F; LSM2; PSORS1C1; PSORS1C3; LST1; C6orf26; DDAH2 ; C6orf27 ; C6orf25; TNF ; BAT5; BAT2; BAT1; C6orf47; LY6G5B; DDR1; GTF2H4; MSH5; HLA-C; LTA; MCCD1; ATP6V1G2; VARS2; POU5F1; TCF19; NFKBIL1; CCHCR1; SNORA38; VARS; HCP5; CSNK2B; HCG27; HCG22; LTB; MICB;SNORD117;CDSN;C6orf15;HCG26;BAT4;BAT3;NCR3;MICA;SNORD84
rs33980500	6	111,913,262	T/C	missense mutation inTRAF3IP2		TUBE1; REV3L;WISP3;SLC16A10;FYN;TRAF3IP2;C6orf225;KIAA1919
rs582757	6	138,197,824	C/T	TNFAIP3 intron	CeD, RA, UC, SLE	PERP;OLIG3;TNFAIP3;PBOV1;KIAA1244

rs1250546	10	81,032,532	A/G	ZMIZ1 intron	<u>MS</u> , CD, CeD, Vitiligo	LOC283050;ZCCHC24;EIF5AL1;PPIF;MIR1256;ZMIZ1;LOC650623;SFTPA2;SFTPA1
rs645078	11	64,135,298	A/C	RPS6KA4 intron		NRXN2;MACROD1;BAD;SLC22A12;SLC22A11;TRMT112;MARK2;MEN1;RPS6KA4;STIP1;MIR1237;KCNK4;FERMT3;TRPT1;SF1;PLCB3;DNAJC4;ESRRA;C11orf20;PPP1R14B;GPR137;COX8A;RASGRP2;CDC42BPG;PYGM;NUDT22;MAP4K2;EHD1;PRDX5;OTUB1;RCOR2;CCDC88B;VEGFB;NAA40;FKBP2;FLRT1
rs2066819	12	56,750,204	C/T	STAT2 intron		ZC3H10;CNPY2;OBFC2B;APOF;SPRYD4;ATP5B;NACA;MYL6B;WIBG;PA2G4;SMARCC2;RNF41;ESYT1;CDK2;SILV;BAZ2A;SLC39A5;MIP;ANKRD52;TIMELESS;CS;ERBB3;RBMS2;PRIM1;SNORD59B;SNORD59A;RAB5B;RPS26;HSD17B6;PAN2;IL23A;SUOX;COQ10A;DGKA;GLS2;RPL41;MYL6;STAT2;PTGES3;IKZF4
rs8016947	14	35,832,666	G/T	Intergenic		KIAA0391;PPP2R3C;BRMS1L;INSM2;NFKBIA;RALGAPA1;PSMA6; C14orf19; FAM177A1;SRP54;BAZ1A
rs12445568	16	31,004,812	C/T	STX1B intron		FBXL19;ITGAX;ITGAL;ITGAM;ITGAD;CTF1;C16orf58;PYCARD;PRSS36;FUS;PYDC1;RNF40;BCKDK;TRIM72;NCRNA00095;PRSS8;MYST1;PRR14;PHKG2;ORAI3; BCL7C; C16orf93; ZNF843; HSD3B7; PRSS53; TGFB111; SNORA30; ZNF688; ZNF689; SETD1A; COX6A2; ZNF646; ZNF668; FBRS; ARMC5; MIR762; SRCAP;ZNF629; VKORC1; STX1B;ZNF785;ZNF768;ZNF764;SLC5A2;STX4;ZNF747
rs28998802	17	26,124,908	A/G	NOS2 intron		KSR1;LGALS9;FLJ40504;PYY2;WSB1;NOS2;C17orf108;NLK;PPY2
rs34536443	19	10,463,118	G/C	Missense mutation in <i>TYK2</i>	CD, T1D, SI	ATG4D;S1PR2;P2RY11;SLC44A2;ILF3;CDC37;PPAN-P2RY11 ; C19orf38; MRPL4; MIR638; MIR1238; SNORD105; TYK2; ZGLP1; COL5A3; OLFM2; AP1M2; EIF3G; CDKN2D; FDX1L; LOC147727; ANGPTL6; C3P1; KRI1 ;PPAN; MIR199A1; ICAM5; ICAM4 ;ICAM3 ;ICAM1 ;TMED1
rs1056198	20	48,556,229	C/T	<i>RNF114</i> intron		TMEM189-UBE2V1; KCNB1; B4GALT5; TMEM189; SLC9A8; CEBPB; UBE2V1; RNF114; SPATA2; SNAI1; PTGIS
rs4821124	22	21,979,289	C/T	966 bp downstream of <i>UBE2L3</i>	SLE, <u>CeD*</u> , <u>RA</u> , <u>CD</u> , MS	CCDC116;YDJC;PPIL2;POM121L8P;PI4KAP2;TOP3B;PPM1F;YPEL1;MIR130B;RIMBP3B;MIR301B;SDF2L1;MAPK1;RIMBP3C;HIC2;UBE2L3
Newly Identified Loci						
rs11121129	1	8,268,095	A/G	Intergenic	UC, CeD	LOC100132287;LOC100133331;PARK7;PER3;OR4F3;OR4F29;TNFRSF9;RERE;VAMP3;UTS2;ERRF11;SLC45A1;CAMTA1;OR4F16;LOC100132062
rs7536201	1	25,293,084	C/T	1583 bp upstream of <i>RUNX3</i>	<u>AS</u> , <u>CeD</u>	LOC100132287;CLIC4;SRRM1;RHD;LOC100133331;C1orf130;TMEM57;OR4F3;OR4F29;RUNX3;NIPAL3;C1orf63;TMEM50A;OR4F16;SYF2;LOC100132062;RHCE;RCAN3
rs10865331	2	62,551,472	A/G	Intergenic	<u>AS*</u>	B3GNT2;TMEM17;CCT4;EHBP1;COMMD1;FAM161A
rs9504361	6	577,820	A/G	<i>EXOC2</i> intron	CeD, BCC, PSP	IRF4;DUSP22;LOC285768;HUS1B;EXOC2
rs2451258	6	159,506,600	C/T	Intergenic	MS, CeD, CD, <u>RA</u>	RSPH3;EZR;TMEM181;DYNLT1;FNDC1;OSTCL;SYTL3;TAGAP
rs2700987	7	37,386,237	A/C	<i>ELMO1</i> intron	PBC, CeD, RA	GPR141;ELMO1;MIR1200
rs11795343	9	32,523,737	T/C	<i>DDX58</i> intron		APTXX;TOPORS;NDUFB6;DDX58;TAF1L;ACO1;TMEM215
rs10979182	9	110,817,020	A/G	Intergenic		KLF4

rs4561177	11	109,962,432	A/G	1655 bp upstream of <i>ZC3H12C</i>		ARHGAP20;RDX;ZC3H12C;FDX1
rs3802826	11	128,406,438	A/G	<i>ETS1</i> intron	SLE, CeD	TP53AIP1;ETS1;FLI1;C11orf45;ARHGAP32;KCNJ1;KCNJ5
rs367569	16	11,365,500	C/T	1664 bp downstream of <i>PRM3</i>	CeD, T1D, PBC	C16orf75;DEXI;LITAF;ZC3H7A;SNN;SOCS1;FAM18A;CIITA;TNP2;PRM1;PRM3; PRM2;TXNDC11;CLEC16A
rs963986	17	40,561,579		<i>PTRF</i> intron	CD, MS	GHDC;KCNH4;FAM134C;LOC100190938;ATP6V0A1;TTC25;CNTNAP1;TUBG1; STAT3;HSPB9;G6PC;ACLY;NKIRAS2;LOC388387;WNK4;DNAJC7;CCDC56;PSME3; PSMC3IP;TUBG2;PLEKHH3;CNTD1;RAB5C;COASY;LOC90586;AOC3;AOC2; NAGLU;STAT5B;STAT5A;BECN1;KAT2A;DHX58;CCR10;HCRT;VPS25;MLX;CNP; RAMP2;EZH1;HSD17B1;PTRF
rs11652075	17	78,178,893		Missense mutation in <i>CARD14</i>		CBX2;NPTX1;FLJ35220;CBX8;SLC26A11;LOC100294362;CCDC40;SGSH;RPTOR ;EIF4A3;CBX4;GAA;TBC1D16;CARD14;RNF213;ENPP7
rs545979	18	51,819,750		<i>POLI</i> intron		<i>POLI</i> ;MBD2;C18orf26;STARD6;SNORA37;C18orf54
rs892085	19	10,818,092		<i>QTRT1</i> intron		ATG4D;S1PR2;LDLR;SLC44A2;ILF3;CDC37;C19orf52;C19orf38;MRPL4;KANK2; MIR638;MIR1238;TYK2;DOCK6;ZGLP1;AP1M2;CDKN2D;FDX1L;LOC147727;KRI1; SMARCA4;SPC24;MIR199A1;CARM1;ICAM5;ICAM4;ICAM3;ICAM1;TMED1;QTRT1;K EAP1;RAVER1;YIPF2;MIR1181;S1PR5;PDE4A;DNM2

Supplementary Table 5. Association results for rs892085

The association of rs892085 before and after conditioning on either of two signals in *TYK2*: i) rs12720356, the most significantly associated SNP in this region from a previous study³; ii) rs34536443, the most significant SNP in this region

Analysis	P value					
	Kiel	CASP	WTCCC2	PAGE	GAPC	Meta
No conditioning	3.21x10 ⁻²	1.48x10 ⁻³	1.02x10 ⁻⁴	2.22x10 ⁻³	4.18x10 ⁻¹⁰	2.95x10 ⁻¹⁷
Conditioning on rs12720356	8.72x10 ⁻²	2.88x10 ⁻³	2.40x10 ⁻³	1.26x10 ⁻²	3.68x10 ⁻⁸	7.36x10 ⁻¹³
Conditioning on rs34536443	5.40x10 ⁻²	NA	7.70x10 ⁻⁴	9.69x10 ⁻³	1.84x10 ⁻⁸	4.22x10 ⁻¹²

Supplementary Table 6. Significant results for the meta-conditional analysis

Signals achieving genome-wide significance when conditioning on the most strongly associated SNPs of the 19 known and 15 new loci that achieve genome-wide significance in this study. Because the strongest SNP in the *TYK2* region was poorly imputed in CASP GWAS, the second strongest SNP (rs2304256) was used in the conditional analysis for this dataset; the CASP GWAS was not included in the conditional meta-analysis for the *TYK2* locus. Underlined shared diseases indicate the identified SNPs are in high LD ($r^2 > 0.7$). RAF: Risk Allele Frequency.

SNP	Chr.	Position(bp)	GWAS P-value (meta)	ImmunoChip P-value (meta)	Combined P-value	Risk/Non- risk alleles	RAF (Case)	RAF (ctrl)	OR (meta)	Notable genes	Disease overlap ^c
rs2111485	2	163,110,536	7.9×10^{-4}	9.5×10^{-6}	2.7×10^{-8}	G/A	0.647	0.610	1.14	<i>IFIH1</i>	<u>T1D, IgA</u>
rs2910686	5	96,252,589	2.3×10^{-5}	1.3×10^{-4}	2.0×10^{-8}	C/T	0.442	0.437	1.12	<i>ERAP2</i>	<u>CD, AS</u>
rs4379175	5	158,804,928	4.8×10^{-20}	6.9×10^{-22}	9.0×10^{-40}	G/T	0.737	0.678	1.31	<i>IL12B</i>	MS, CD, AS, UC
rs13437088	6	31,355,119	2.8×10^{-17}	1.1×10^{-24}	3.1×10^{-40}	T/C	0.342	0.251	1.32	<i>MICA</i>	AS, GD [‡]
rs12720356	19	10,469,975	9.7×10^{-6}	1.1×10^{-5}	3.2×10^{-10}	A/C	0.929	0.911	1.25	<i>TYK2</i>	<u>CD[*], T1D, SI</u>

^c AS: Ankylosing spondylitis, CD: Crohn's Disease; GD: Graves' disease, IgA: Selective Immunoglobulin A deficiency, MS: Multiple Sclerosis, SI: Soluble ICAM-1, T1D: Type 1 Diabetes; UC: Ulcerative Colitis. ^{*} denotes association with the same SNP. [‡] locus also associated with Systemic sclerosis, CD4:CD8 ratio, Vitiligo, AIDS progression, white blood cell types, Dengue shock syndrome, and Nevirapine-induced rash.

Supplementary Table 7. Association results for the most significant SNPs of the 5 significant loci in the conditional analysis for each of the datasets.

SNP	Chr.	Position	Risk/ Non- risk allele	Kiel			CASP			WTCCC2			PAGE			GAPC			Combined P-value					
				P	RAF (case)	RAF (ctrl)	OR (95% CI)	P	RAF (case)	RAF (ctrl)	OR (95% CI)	P	RAF (case)	RAF (ctrl)	OR (95% CI)	P	RAF (case)	RAF (ctrl)		OR (95% CI)				
rs2111485	2	163,110,536	G/A	8.5x10 ⁻²	0.67	0.63	1.19 (0.98-1.44)	1.0x10 ⁻¹	0.63	0.60	1.13 (0.98-1.30)	1.1x10 ⁻²	0.66	0.61	1.11 (1.03-1.21)	2.3x10 ⁻²	0.64	0.61	1.10 (1.02-1.18)	6.7x10 ⁻⁵	0.65	0.61	1.20 (1.11-1.29)	2.7x10 ⁻⁸
rs2910686	5	96,252,589	C/T	4.9x10 ⁻³	0.46	0.43	1.32 (1.09-1.59)	1.1x10 ⁻³	0.44	0.41	1.25 (1.09-1.42)	3.4x10 ⁻²	0.46	0.45	1.09 (1.01-1.18)	7.7x10 ⁻³	0.44	0.43	1.09 (1.02-1.18)	5.8x10 ⁻³	0.43	0.44	1.12 (1.04-1.20)	2.0x10 ⁻⁸
rs4379175	5	158,804,928	G/T	4.3x10 ⁻⁴	0.76	0.70	1.42 (1.17-1.72)	4.2x10 ⁻⁷	0.75	0.67	1.40 (1.23-1.60)	1.2x10 ⁻¹²	0.73	0.67	1.35 (1.24-1.46)	5.6x10 ⁻¹²	0.75	0.68	1.30 (1.20-1.39)	2.0x10 ⁻¹¹	0.73	0.68	1.25 (1.16-1.35)	9.0x10 ⁻⁴⁰
rs13437088	6	31,355,119	T/C	4.0x10 ⁻²	0.34	0.25	1.23 (1.01-1.51)	2.2x10 ⁻⁴	0.35	0.26	1.28 (1.12-1.45)	9.5x10 ⁻¹⁵	0.36	0.23	1.44 (1.31-1.58)	9.6x10 ⁻¹¹	0.33	0.27	1.26 (1.18-1.36)	1.0x10 ⁻¹⁵	0.34	0.25	1.33 (1.23-1.43)	3.1x10 ⁻⁴⁰
rs12720356	19	10,469,975	A/C	1.7x10 ⁻²	0.95	0.93	1.62 (1.08-2.42)	NA	NA	NA	NA	1.7x10 ⁻⁵	0.92	0.90	1.34 (1.17-1.53)	1.9x10 ⁻²	0.93	0.92	1.18 (1.04-0.74)	1.1x10 ⁻⁴	0.94	0.91	1.21 (1.06-1.38)	3.2x10 ⁻¹⁰

Supplementary Table 8. Epistasis results

Pairwise combinations of psoriasis loci having the strongest evidence for interaction. The p-values and Z-scores are for the interaction terms from the meta-analysis of the epistasis results. The p-values for *LCE-HLA-C* and *ERAP1-HLA-C* remain statistically significant after Bonferroni correction.

Gene1	SNP	Gene2	SNP 2	P-value	Z-score
<i>LCE</i>	rs6677595	<i>HLA-C</i>	rs4406273	1.8×10^{-6}	4.78
<i>ERAP1</i>	rs27432	<i>HLA-C</i>	rs4406273	2.8×10^{-10}	6.31

Supplementary Table 9. Differential expression analysis results for genes in each of the 39 psoriasis loci identified by the primary or conditional association analysis.

For each locus, a genomic region in strong LD ($r^2 > 0.7$) with the most significantly associated SNP was defined using the tag SNP function of PLINK; the tagged regions were then extended by 50 kb on each side.

Microarray results⁵ for all genes overlapping these extended regions are shown. Results for two-sample tests of differential expression are shown, including the false discovery rate (FDR), fold-change in expression levels (FC), and whether expression is up- or down-regulated in lesional skin (using $FDR \leq 0.05$ and $FC \leq 0.67$ or ≥ 1.50 as criteria for differential expression).

	Gene	FDR	FC	Differentially expressed
Known loci	<i>IL28RA</i>	2.43E-01	0.92	
	<i>LOC284632</i>	9.43E-01	1.02	
	<i>IL22RA1</i>	8.85E-08	1.32	
	<i>IL23R</i>	1.77E-01	1.05	
	<i>IL12RB2</i>	5.99E-49	1.62	Up
	<i>LCE3D</i>	0.00E+00	24.42	Up
	<i>PAPOLG</i>	1.27E-04	0.84	
	<i>REL</i>	2.73E-19	1.74	Up
	<i>PUS10</i>	1.52E-40	1.75	Up
	<i>GCA</i>	1.00E+00	1.02	
	<i>KCNH7</i>	1.00E+00	1.02	
	<i>ERAP1</i>	1.14E-45	0.69	
	<i>ERAP2</i>	5.33E-03	1.21	
	<i>CAST</i>	1.14E-45	0.69	
	<i>KIF3A</i>	1.88E-13	0.73	
	<i>IL13</i>	1.62E-04	1.12	
	<i>IL4</i>	2.53E-01	1.04	
	<i>RAD50</i>	4.24E-06	0.85	
	<i>TNIP1</i>	1.22E-15	1.32	
	<i>ANXA6</i>	1.73E-04	1.11	
	<i>LOC285627</i>	6.54E-01	1.03	
	<i>PSORS1C3</i>	1.84E-01	1.05	
	<i>HCG27</i>	1.54E-01	0.95	
	<i>C6orf15</i>	8.90E-01	1.03	
	<i>POU5F1</i>	1.00E+00	1.02	
	<i>HCG22</i>	4.47E-03	1.09	
	<i>HLA-B</i>	2.26E-15	1.26	
	<i>PSORS1C1</i>	1.00E+00	0.99	
	<i>PSORS1C2</i>	6.72E-04	1.39	
	<i>HLA-C</i>	1.70E-14	1.25	
	<i>CDSN</i>	2.80E-16	2.00	Up
	<i>CCHCR1</i>	7.78E-05	0.90	
	<i>MICA</i>	1.22E-17	0.60	Down
	<i>TCF19</i>	6.08E-30	1.41	
	<i>TRAF3IP2</i>	1.56E-03	1.10	
	<i>TNFAIP3</i>	5.18E-01	1.05	
	<i>STAT2</i>	8.77E-21	1.37	
	<i>SLC39A5</i>	5.39E-03	1.11	
	<i>CS</i>	7.01E-02	0.93	
<i>IL23A</i>	4.32E-22	1.34		
<i>RNF41</i>	1.17E-01	0.93		
<i>OBFC2B</i>	8.28E-05	1.16		
<i>ANKRD52</i>	1.52E-01	1.05		
<i>APOF</i>	1.00E+00	1.01		
<i>COQ10A</i>	1.00E+00	0.99		
<i>SMARCC2</i>	1.47E-26	0.69		
<i>PAN2</i>	4.93E-21	0.73		
<i>CNPY2</i>	9.14E-25	1.30		
<i>NFKBIA</i>	1.01E-02	1.09		
<i>PSMA6</i>	4.99E-32	1.35		

	<i>NCRNA00095</i>	1.41E-01	1.05	
	<i>PRSS53</i>	4.92E-120	2.66	Up
	<i>BCKDK</i>	7.01E-25	1.32	
	<i>VKORC1</i>	1.36E-20	1.30	
	<i>MIR762</i>	4.28E-03	0.92	
	<i>STX4</i>	5.95E-07	1.14	
	<i>BCL7C</i>	4.28E-03	0.92	
	<i>FBXL19</i>	6.32E-38	1.43	
	<i>ORAI3</i>	2.59E-19	0.73	
	<i>ZNF646</i>	4.29E-08	1.22	
	<i>SETD1A</i>	1.01E-03	1.11	
	<i>HSD3B7</i>	4.15E-02	0.89	
	<i>MYST1</i>	7.35E-21	0.78	
	<i>PRSS8</i>	4.78E-19	1.80	Up
	<i>ZNF668</i>	2.02E-06	1.15	
	<i>STX1B</i>	3.67E-02	1.07	
	<i>PRSS36</i>	1.12E-04	1.11	
	<i>CTF1</i>	1.00E+00	1.00	
	<i>NOS2</i>	4.78E-25	1.54	Up
	<i>CDC37</i>	3.03E-19	1.26	
	<i>RAVER1</i>	1.00E+00	1.00	
	<i>ICAM4</i>	2.30E-03	1.10	
	<i>MIR1181</i>	3.03E-19	1.26	
	<i>PDE4A</i>	8.49E-25	0.70	
	<i>ICAM3</i>	2.61E-09	1.24	
	<i>ZGLP1</i>	2.38E-02	1.09	
	<i>TYK2</i>	8.31E-02	0.94	
	<i>ICAM1</i>	1.12E-10	1.21	
	<i>FDX1L</i>	3.55E-06	1.17	
	<i>ICAM5</i>	1.28E-03	1.10	
	<i>SLC9A8</i>	5.56E-05	0.90	
	<i>SPATA2</i>	8.65E-21	0.77	
	<i>SNAI1</i>	1.30E-01	1.06	
	<i>RNF114</i>	2.28E-21	0.66	Down
	<i>CCDC116</i>	2.29E-07	0.87	
	<i>PPIL2</i>	2.17E-08	1.18	
	<i>YDJC</i>	2.92E-19	1.26	
	<i>PI4KAP2</i>	2.29E-07	0.87	
	<i>MIR301B</i>	2.29E-07	0.87	
	<i>RIMBP3B</i>	8.97E-33	0.68	
	<i>UBE2L3</i>	6.67E-38	1.39	
	<i>RIMBP3C</i>	8.97E-33	0.68	
	<i>MIR130B</i>	2.29E-07	0.87	
	<i>SDF2L1</i>	1.22E-12	1.34	
New loci	<i>RUNX3</i>	1.35E-08	1.20	
	<i>EXOC2</i>	8.20E-11	1.25	
	<i>TAGAP</i>	5.59E-04	1.10	
	<i>ELMO1</i>	1.59E-02	0.87	
	<i>TOPORS</i>	5.18E-05	0.86	
	<i>NDUFB6</i>	3.21E-12	1.20	
	<i>DDX58</i>	7.68E-63	3.30	Up
	<i>ZC3H12C</i>	4.50E-31	1.61	Up
	<i>ETS1</i>	8.93E-11	1.31	
	<i>TNP2</i>	8.77E-01	1.02	
	<i>SOCS1</i>	6.56E-21	1.53	Up
	<i>PRM3</i>	2.78E-04	1.11	
	<i>PRM1</i>	1.00E+00	1.02	
	<i>PRM2</i>	4.80E-03	1.09	
	<i>PTRF</i>	3.73E-36	0.67	Down
	<i>STAT3</i>	1.08E-63	2.13	Up
	<i>ATP6V0A1</i>	1.73E-02	1.14	
	<i>SGSH</i>	9.47E-02	0.94	
	<i>SLC26A11</i>	5.95E-13	0.83	

	<i>CARD14</i>	1.29E-68	2.01	Up
	<i>MBD2</i>	2.50E-08	1.16	
	<i>POLI</i>	6.56E-21	0.54	Down
	<i>STARD6</i>	1.00E+00	1.02	
	<i>SNORA37</i>	7.12E-01	1.03	
	<i>C18orf54</i>	3.55E-02	1.09	
	<i>MIR199A1</i>	3.64E-08	1.21	
	<i>TMED1</i>	1.00E+00	0.99	
	<i>DNM2</i>	2.13E-10	1.18	
	<i>ILF3</i>	1.35E-26	1.37	
	<i>LOC147727</i>	1.00E-08	0.76	
	<i>MIR638</i>	3.64E-08	1.21	
	<i>QTRT1</i>	9.08E-02	1.07	
Conditional Analysis	<i>IFIH1</i>	1.14E-50	2.79	Up
	<i>FAP</i>	8.25E-01	1.09	
	<i>LNPEP</i>	9.47E-35	0.73	
	<i>ERAP2</i>	5.33E-03	1.21	
	<i>IL12B</i>	2.70E-14	1.22	
	<i>HLA-B</i>	2.26E-15	1.26	
	<i>MICA</i>	1.22E-17	0.60	Down
	<i>HCG26</i>	7.96E-03	0.91	
	<i>CDC37</i>	3.03E-19	1.26	
	<i>RAVER1</i>	1.00E+00	1.00	
	<i>ICAM4</i>	2.30E-03	1.10	
	<i>KEAP1</i>	7.00E-10	1.18	
	<i>MRPL4</i>	2.44E-44	1.44	
	<i>MIR1181</i>	3.03E-19	1.26	
	<i>PDE4A</i>	8.49E-25	0.70	
	<i>ICAM3</i>	2.61E-09	1.24	
	<i>ZGLP1</i>	2.38E-02	1.09	
	<i>TYK2</i>	8.31E-02	0.94	
	<i>ICAM1</i>	1.12E-10	1.21	
	<i>FDX1L</i>	3.55E-06	1.17	
	<i>ICAM5</i>	1.28E-03	1.10	

Supplementary Table 10. Variance in liability

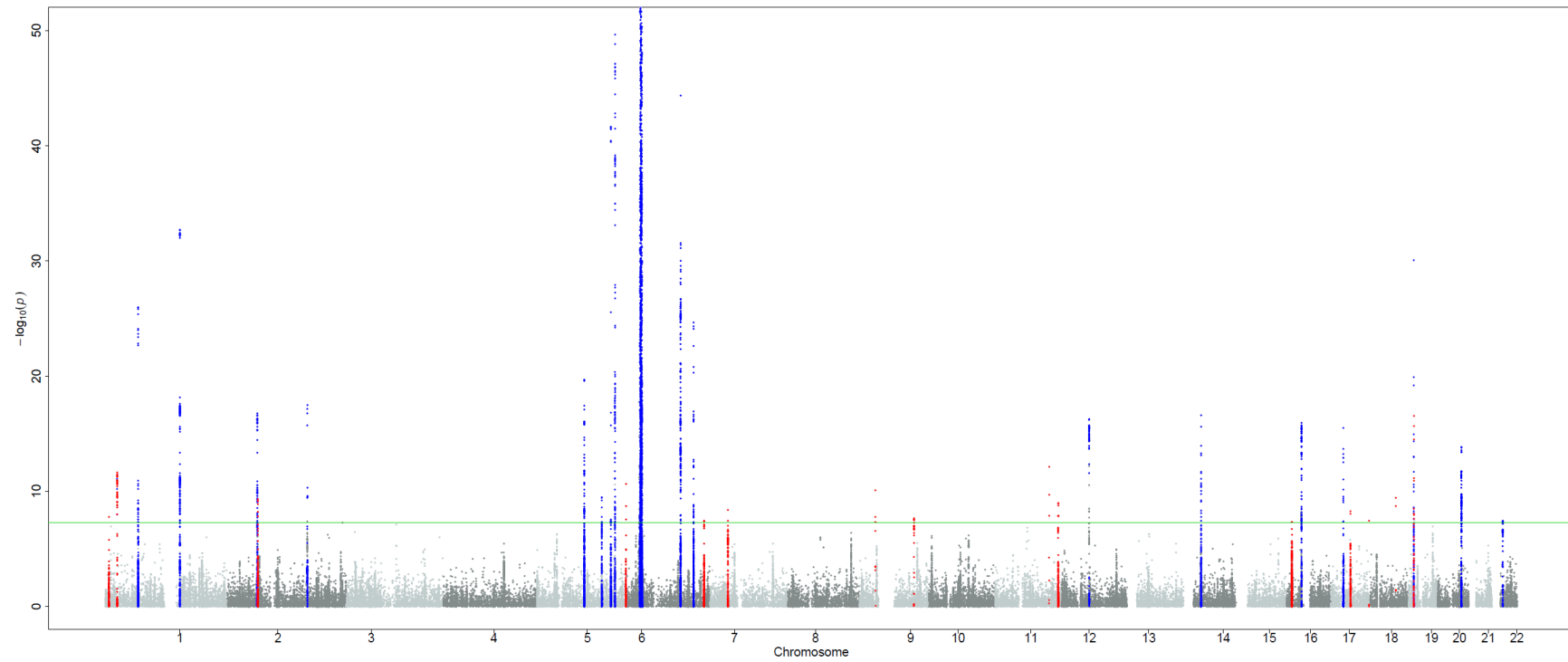
The variance in liability explained by each locus, as determined under a liability model⁶. Prevalence of psoriasis was set as 2% when estimating the variance. Assuming the multiple loci have an additive effect on the risk of psoriasis, the variance in liability explained by the 19 known loci, 15 new loci, and the 5 secondary signals identified by conditional analysis are 11.35%, 1.60%, and 1.36%, respectively.

SNP	Notable nearby genes	Risk allele Freq (case)	Risk allele Freq (control)	OR	RR	Variance in liability
<i>Known loci</i>						
rs7552167	<i>IL28RA</i>	0.878	0.858	1.21	1.21	0.14%
rs9988642	<i>IL23R</i>	0.952	0.929	1.52	1.51	0.36%
rs6677595	<i>LCE3D</i>	0.689	0.64	1.26	1.26	0.40%
rs62149416	<i>REL</i>	0.671	0.635	1.17	1.17	0.19%
rs17716942	<i>IFIH1</i>	0.891	0.863	1.27	1.27	0.22%
rs27432	<i>ERAP1</i>	0.309	0.274	1.2	1.20	0.22%
rs1295685	<i>IL13/IL4</i>	0.807	0.798	1.18	1.18	0.14%
rs2233278	<i>TNIP1</i>	0.09	0.058	1.59	1.57	0.41%
rs12188300	<i>IL12B</i>	0.132	0.095	1.58	1.56	0.62%
rs4406273	<i>HLA-C</i>	0.259	0.092	4.32	4.16	6.44%
rs33980500	<i>TRAF3IP2</i>	0.108	0.074	1.52	1.51	0.41%
rs582757	<i>TNFAIP3</i>	0.315	0.273	1.23	1.23	0.28%
rs2066819	<i>IL23A/STAT2</i>	0.948	0.934	1.39	1.38	0.21%
rs8016947	<i>NFKBIA</i>	0.6	0.564	1.16	1.16	0.18%
rs12445568	<i>FBXL19</i>	0.403	0.368	1.16	1.16	0.17%
rs28998802	<i>NOS2</i>	0.17	0.145	1.22	1.21	0.16%
rs34536443	<i>TYK2</i>	0.974	0.953	1.88	1.87	0.54%
rs1056198	<i>RNF114</i>	0.6	0.573	1.16	1.16	0.18%
rs4821124	<i>UBE2L3</i>	0.208	0.189	1.13	1.13	0.08%
<i>New loci</i>						
rs11121129	<i>SLC45A1</i>	0.308	0.287	1.13	1.13	0.10%
rs7536201	<i>RUNX3</i>	0.528	0.494	1.13	1.13	0.12%
rs10865331	<i>B3GNT2</i>	0.404	0.374	1.12	1.12	0.10%
rs9504361	<i>EXOC2/IRF4</i>	0.574	0.546	1.12	1.12	0.10%
rs2451258	<i>TAGAP</i>	0.362	0.348	1.12	1.12	0.10%
rs2700987	<i>ELMO1</i>	0.591	0.564	1.11	1.11	0.09%
rs11795343	<i>DDX58</i>	0.628	0.597	1.11	1.11	0.09%
rs10979182	<i>KLF4</i>	0.617	0.591	1.12	1.12	0.10%
rs4561177	<i>ZC3H12C</i>	0.617	0.581	1.14	1.14	0.14%
rs3802826	<i>ETS1</i>	0.505	0.484	1.12	1.12	0.11%
rs367569	<i>SOCS1</i>	0.729	0.709	1.13	1.13	0.10%
rs963986	<i>STAT3,</i>	0.169	0.154	1.15	1.15	0.08%
rs11652075	<i>CARD14</i>	0.53	0.502	1.11	1.11	0.09%
rs545979	<i>STARD6,POLI,</i>	0.317	0.291	1.12	1.12	0.09%
rs892085	<i>ILF3,CARM1</i>	0.593	0.558	1.17	1.17	0.20%
<i>Conditional analysis loci</i>						
rs2111485	<i>IFIH1</i>	0.647	0.61	1.14	1.14	0.13%
rs2910686	<i>ERAP2</i>	0.442	0.437	1.12	1.12	0.10%
rs4379175	<i>IL12B</i>	0.737	0.678	1.31	1.30	0.51%
rs13437088	<i>MICA</i>	0.342	0.251	1.32	1.31	0.48%
rs12720356	<i>TYK2</i>	0.929	0.911	1.25	1.25	0.13%

Supplementary Figures

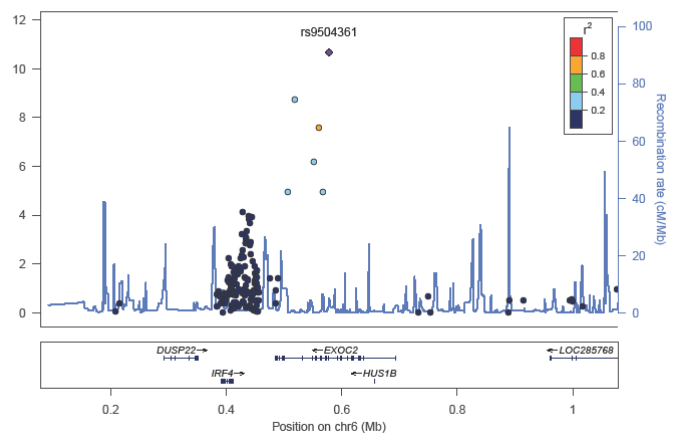
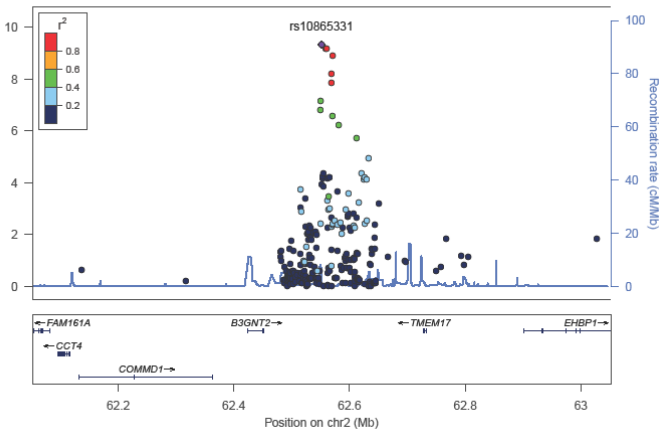
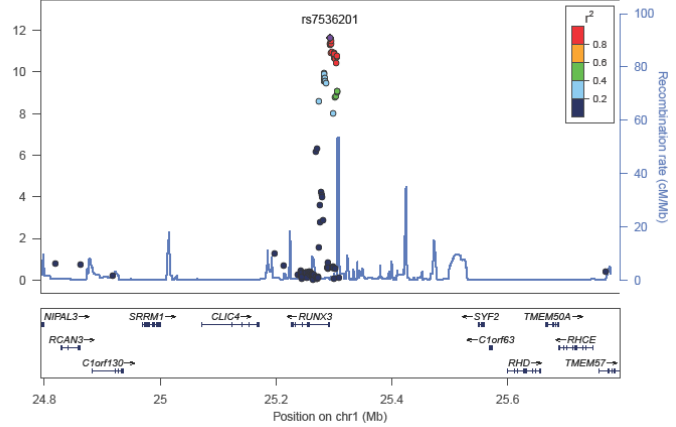
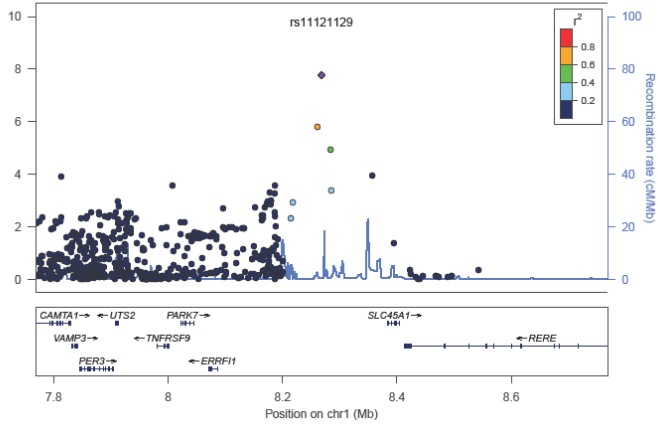
Supplementary Figure 1: Manhattan plot for meta-analysis

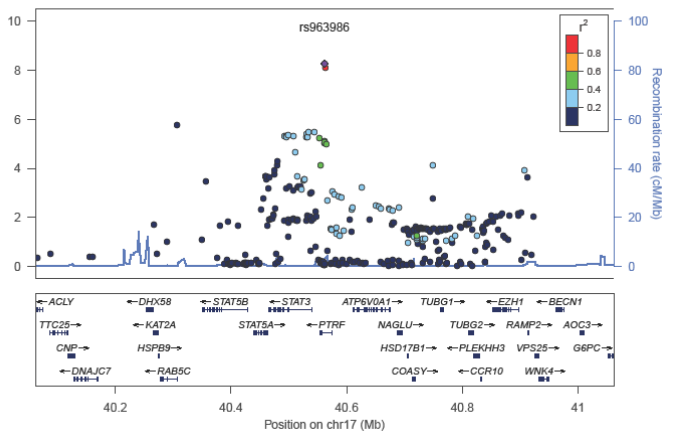
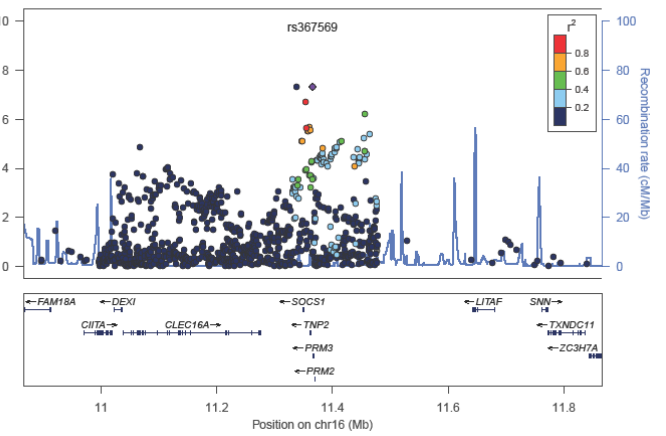
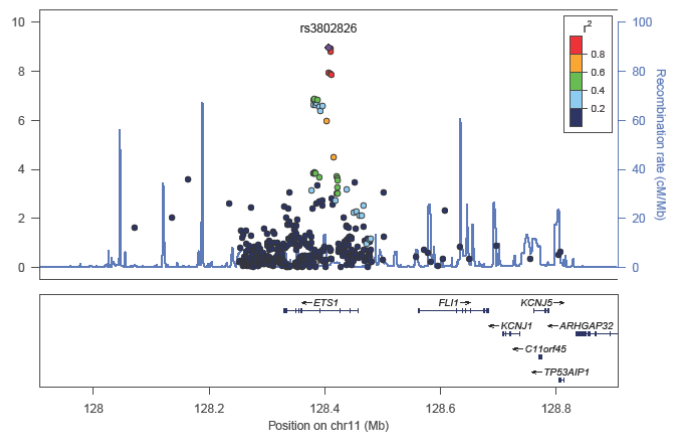
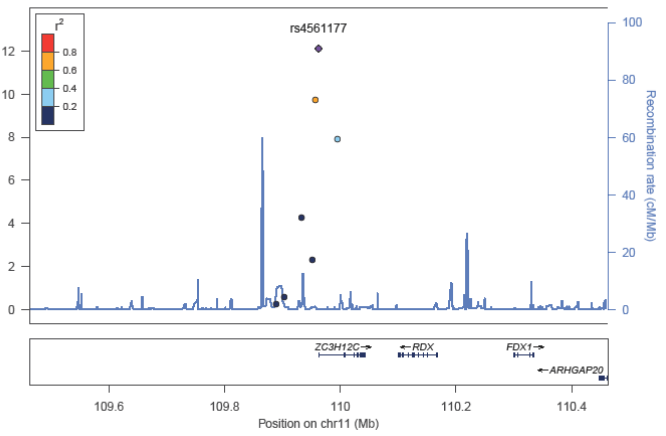
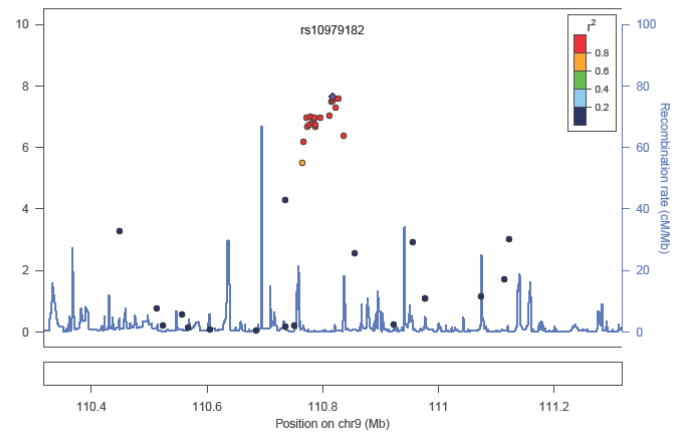
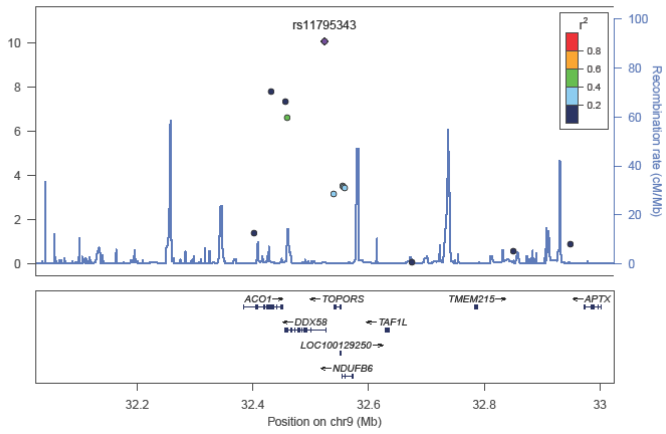
The 34 susceptibility loci that achieve genome-wide significance (above the green line) in the meta-analysis. The 19 known loci are colored blue, and the 15 new loci are colored red. Only SNPs with P-values $\geq 1 \times 10^{-50}$ are shown.

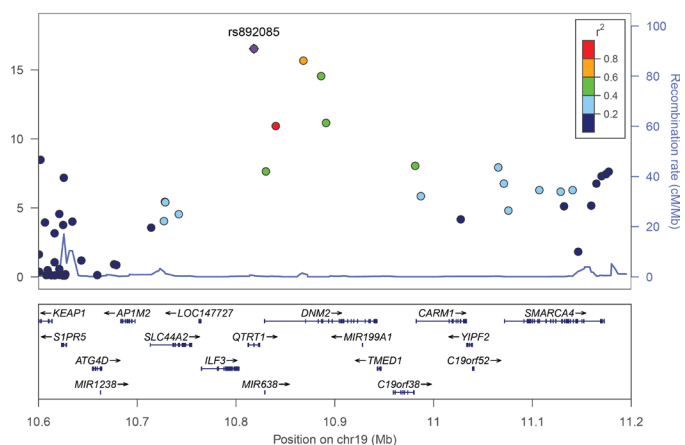
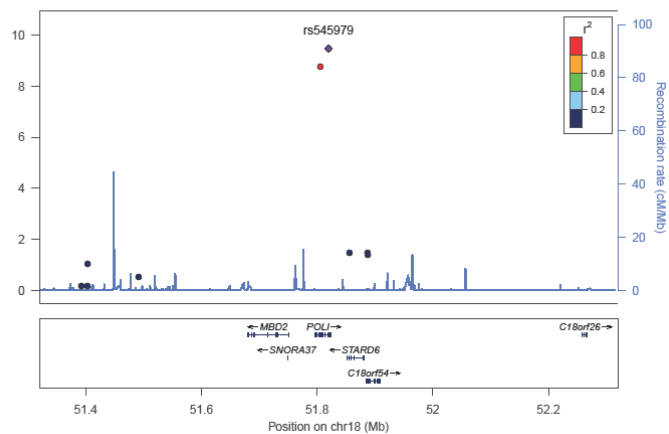
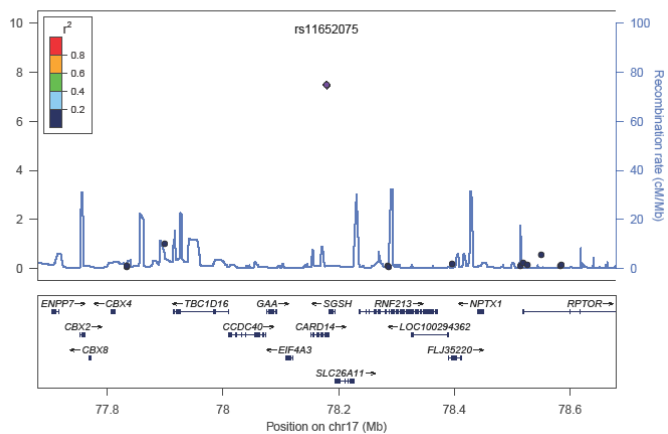


Supplementary Figure 2. Regional association plots

Regional association plots using LocusZoom⁷ to show the combined p-values in each of the 15 new loci. The most significant SNP from each locus was used as the index SNP to compute the linkage

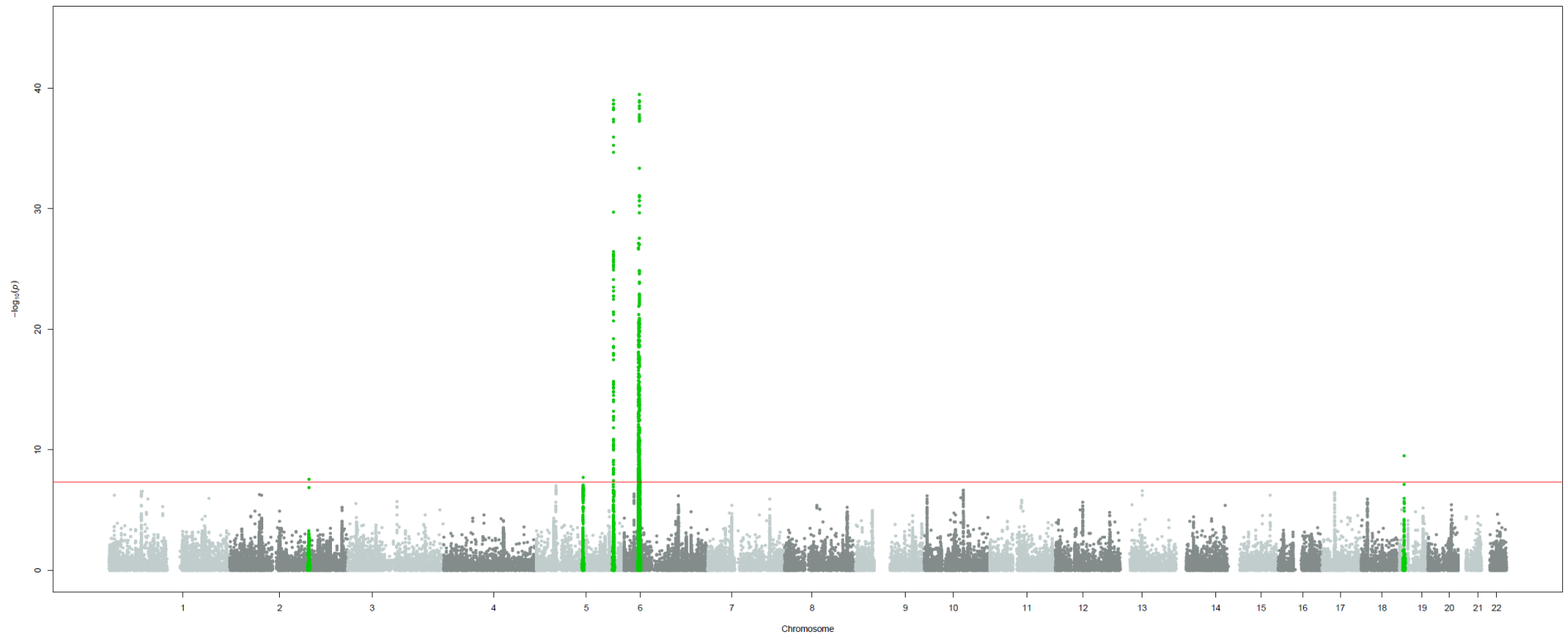




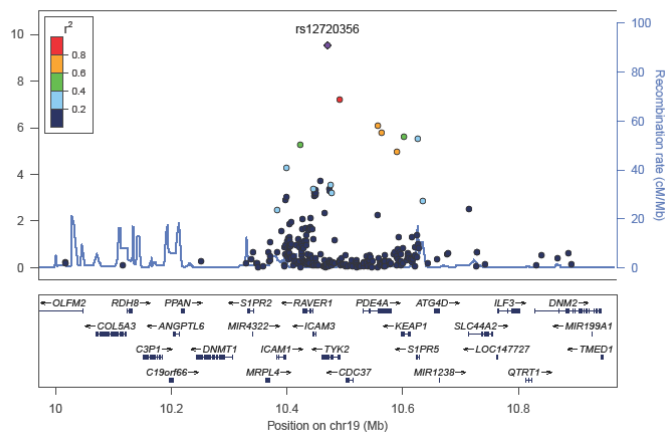
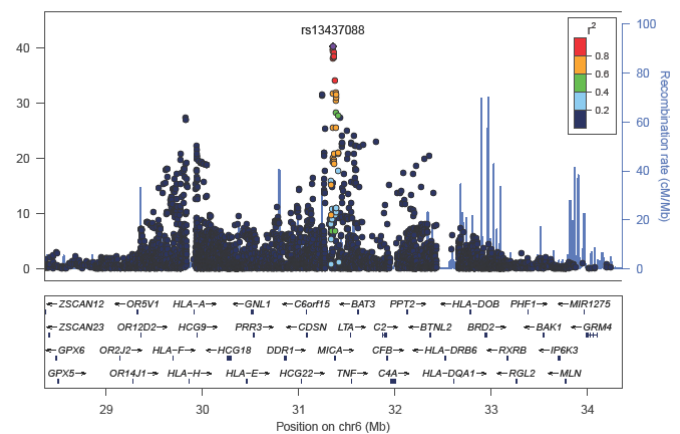
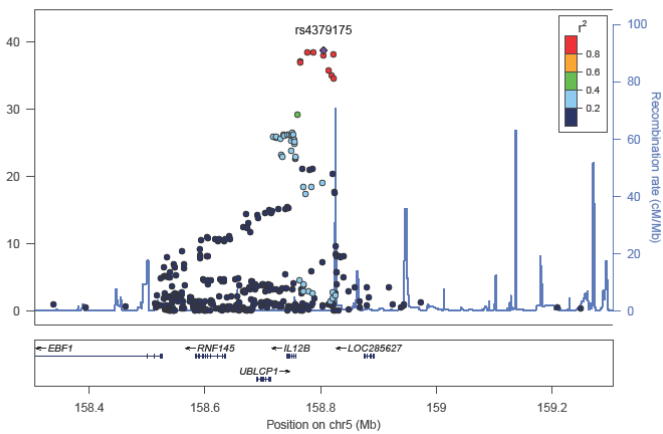
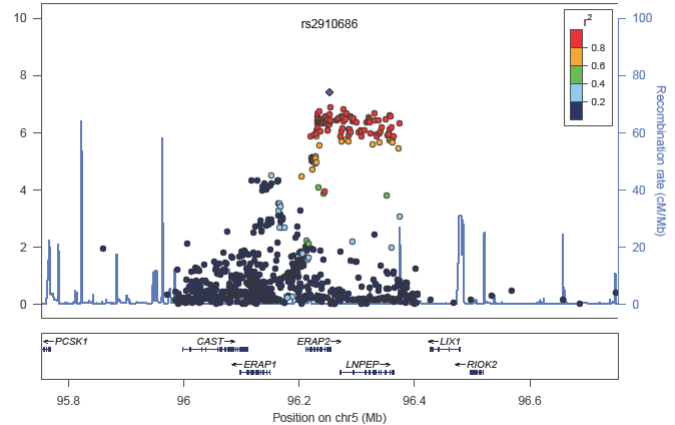
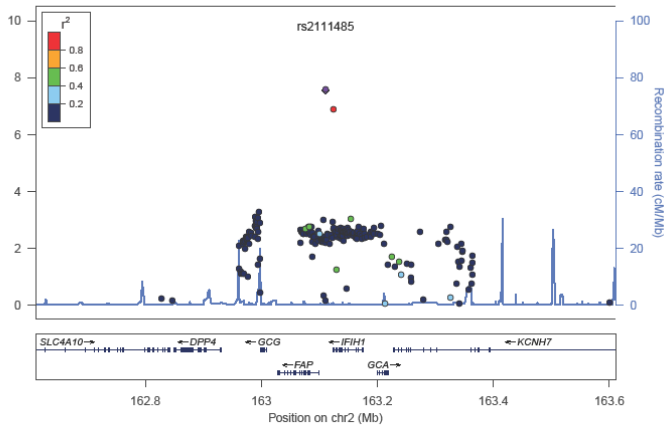


Supplementary Figure 3. Manhattan plot for the results of the conditional analysis.

Green dots shown SNPs in the five loci that achieve genome-wide significance ($P=5 \times 10^{-8}$, denoted by red line).



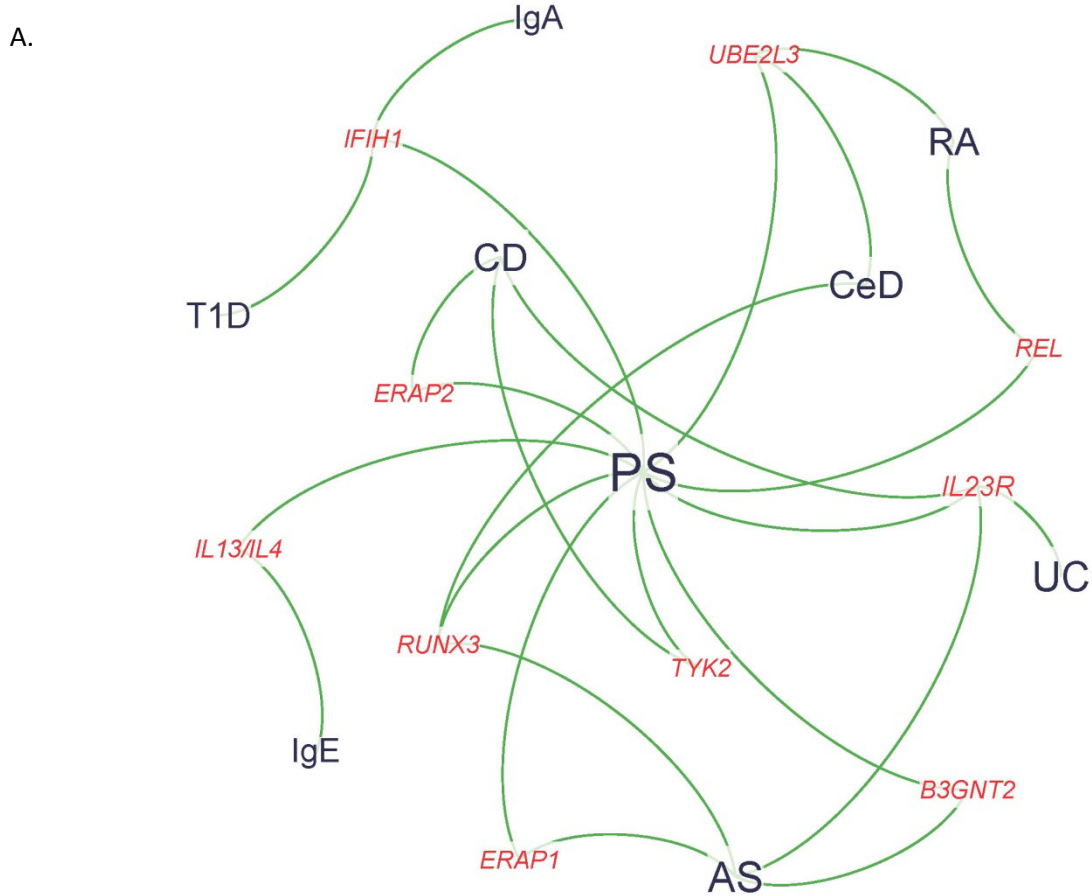
Supplementary Figure. 4. Regional association plots for the significant loci in the conditional meta-analysis.



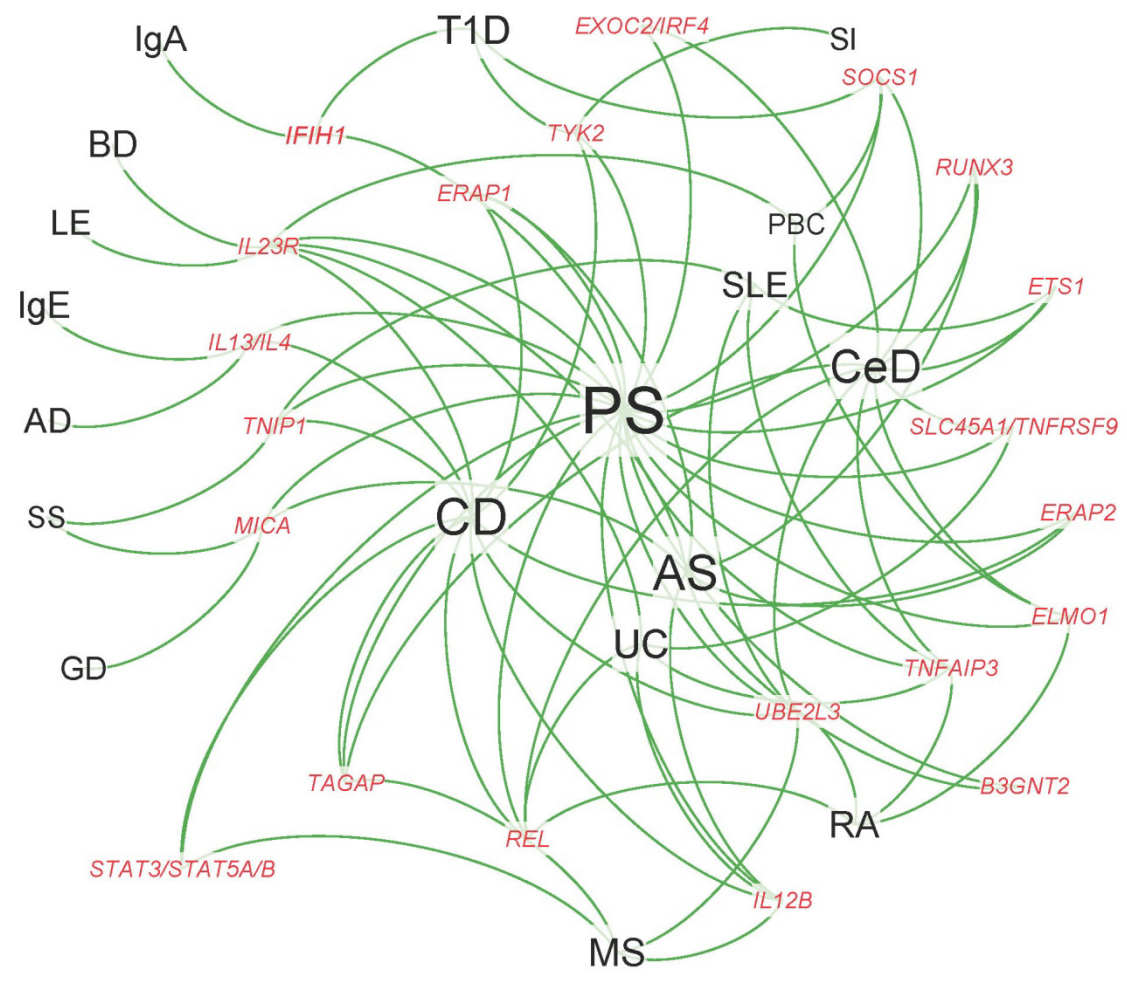
Supplementary Figure 5. Plots illustrating the phenotype overlap for the susceptibility variants listed in Table 1.

Only disease associations that are listed in the NHGRI GWAS catalog (<http://www.genome.gov/gwastudies>) and Immuchip results for Celiac disease⁴ were included. Genes are shown in red and phenotypes in black. A) Shows the overlap with phenotypes where the identified variant is in LD ($r^2 > 0.7$) with the identified psoriasis variant. B) Shows all loci shared with phenotypes that have identified variants within 500kb of the identified psoriasis variant for that locus. Phenotypes sharing the most loci with psoriasis are generally more central to the plot, while those sharing only one or two loci are situated on the outside (Plots were produced using Gephi available at <http://gephi.org/>)⁸. Owing to the number of connections with other phenotypes, the HLA locus was removed from the plot.

AD: Atopic dermatitis, AS: Ankylosing spondylitis, BD: Behcet's disease, CD: Crohn's disease, CeD: Celiac disease, IgE: Serum IgE, IgA: Selective Immunoglobulin A deficiency, LE: Leprosy, MS: Multiple Sclerosis, PBC: primary biliary cirrhosis, PS: Psoriasis, RA: rheumatoid arthritis, SI: Soluble ICAM-1, SLE: Systemic lupus erythematosus, SS: Systemic sclerosis T1D: Type I Diabetes, UC: Ulcerative colitis.



B.



Supplementary note

Membership of Contributing Consortia and acknowledgements of grant support

Wellcome Trust Case Control Consortium 2

Management Committee

Peter Donnelly (Chair)^{1,2}, Leena Peltonen (Deputy Chair)³, Jenefer M Blackwell^{4, 5}, Elvira Bramon⁶, Matthew A Brown⁷, Juan P Casas⁸, Aiden Corvin⁹, Nicholas Craddock¹⁰, Panos Deloukas³, Audrey Duncanson¹¹, Janusz Jankowski¹², Hugh S Markus¹³, Christopher G Mathew¹⁴, Mark I McCarthy¹⁵, Colin NA Palmer¹⁶, Robert Plomin¹⁷, Anna Rautanen¹, Stephen J Sawcer¹⁸, Nilesh Samani¹⁹, Richard C Trembath¹⁴, Ananth C Viswanathan^{20,21}, Nicholas W Wood²²

Data and Analysis Group

Chris C A Spencer¹, Gavin Band¹, Céline Bellenguez¹, Colin Freeman¹, Garrett Hellenthal¹, Eleni Giannoulidou¹, Matti Pirinen¹, Richard Pearson¹, Amy Strange¹, Zhan Su¹, Damjan Vukcevic¹, Peter Donnelly^{1,2}

DNA, Genotyping, Data QC and Informatics Group

Cordelia Langford³, Sarah E Hunt³, Sarah Edkins³, Rhian Gwilliam³, Hannah Blackburn³, Suzannah J Bumpstead³, Serge Dronov³, Matthew Gillman³, Emma Gray³, Naomi Hammond³, Alagurevathi Jayakumar³, Owen T McCann³, Jennifer Liddle³, Marc L Perez³, Simon C Potter³, Radhi Ravindrarajah³, Michelle Ricketts³, Matthew Waller³, Paul Weston³, Sara Widaa³, Pamela Whittaker³, Panos Deloukas³, Leena Peltonen³

Publications Committee

Christopher G Mathew (Chair)¹⁴, Jenefer M Blackwell^{4,5}, Matthew A Brown⁷, Aiden Corvin⁹, Mark I McCarthy¹⁵, Chris C A Spencer¹

1 Wellcome Trust Centre for Human Genetics, Roosevelt Drive, Oxford OX3 7LJ, UK; 2 Dept Statistics, University of Oxford, Oxford OX1 3TG, UK; 3 Wellcome Trust Sanger Institute, Wellcome Trust Genome Campus, Hinxton, Cambridge CB10 1SA, UK; 4 Telethon Institute for Child Health Research, Centre for Child Health Research, University of Western Australia, 100 Roberts Road, Suciaco, Western Australia 6008; 5 Genetics and Infection Laboratory, Cambridge Institute of Medical Research, Addenbrooke's Hospital, Cambridge CB2 0XY, UK; 6 Division of Psychological Medicine and Psychiatry, Biomedical Research Centre for Mental Health at the Institute of Psychiatry, King's College London and The South London and Maudsley NHS Foundation Trust, Denmark Hill, London SE5 8AF, UK; 7 Diamantina Institute of Cancer, Immunology and Metabolic Medicine, Princess Alexandra Hospital, University of Queensland, Brisbane, Queensland, Australia; 8 Dept Epidemiology and Population Health, London School of Hygiene and Tropical Medicine, London WC1E 7HT, UK; 9 Neuropsychiatric Genetics Research Group, Institute of Molecular Medicine, Trinity College Dublin, Dublin 2, Eire; 10 Dept Psychological Medicine, Cardiff University School of Medicine, Heath Park, Cardiff CF14 4XN, UK; 11 Molecular and Physiological Sciences, The Wellcome Trust, London NW1 2BE; 12 Centre for Gastroenterology, Bart's and the London School of Medicine and Dentistry, London E1 2AT, UK; 13 Clinical Neurosciences, St George's University of London, London SW17 0RE; 14 Dept Medical and Molecular Genetics, King's College London School of Medicine, Guy's Hospital, London SE1 9RT, UK; 15 Oxford Centre for Diabetes, Endocrinology and Metabolism

(ICDEM), Churchill Hospital, Oxford OX3 7LJ, UK; 16 Biomedical Research Centre, Ninewells Hospital and Medical School, Dundee DD1 9SY, UK; 17 Social, Genetic and Developmental Psychiatry Centre, King's College London Institute of Psychiatry, Denmark Hill, London SE5 8AF, UK; 18 University of Cambridge Dept Clinical Neurosciences, Addenbrooke's Hospital, Cambridge CB2 2QQ, UK; 19 Dept Cardiovascular Science, University of Leicester, Glenfield Hospital, Leicester LE3 9QP; 20 Glaucoma Research Unit, Moorfields Eye Hospital NHS Foundation Trust, London EC1V 2PD, UK; 21 Dept Genetics, University College London Institute of Ophthalmology, London EC1V 9EL, UK; 22 Dept Molecular Neuroscience, Institute of Neurology, Queen Square, London WC1N 3BG, UK.

Genetic Analysis of Psoriasis Consortium (GAPC)

Management Committee

Richard C Trembath (Chair)^{1,2}, Jonathan N Barker¹, A David Burden³, Michael J Cork⁴, Xavier Estivill⁵, Christopher EM Griffiths⁶, Juha Kere⁷, Ross McManus^{8,9}, Giuseppe Novelli^{10,11}, André Reis¹², Lena Samuelsson¹³, Joost Schalkwijk¹⁴, Mona Ståhle¹⁵, Rachid Tazi-Ahnini⁴, Wolfgang Weger¹⁶, Jane Worthington¹⁷

KCL group

Michael H Allen¹, Jonathan N Barker¹, Francesca Capon¹, Adrian Hayday¹⁸, Jo Knight^{1,2}, Frank O Nestle¹, Alexandros Onoufriadis¹, Catherine H Smith¹⁹, Richard C Trembath^{1,2}, Michael E Weale¹

AU-Graz group:

Angelika Hofer¹⁶, Wolfgang Salmhofer¹⁶, Wolfgang Weger¹⁶, Peter Wolf¹⁶

FIN-Helsinki group:

Kati Kainu²⁰, Juha Kere⁷, Ulpu Saarialho-Kere²⁰, Sari Suomela²⁰

GER-Erlangen group:

Petra Badorf¹², Ulrike Hüffmeier¹², Werner Kurrat²¹, Wolfgang Küster²², Jesús Lascorz²³, Rotraut Mössner²⁴, André Reis¹², Funda Schürmeier-Horst²⁵, Markward Ständer²⁶, Heiko Traupe²⁵

HOL-Nijmegen group:

Judith G M Bergboer¹⁴, Martin den Heijer²⁷, Joost Schalkwijk¹⁴, Peter C. van de Kerkhof¹⁴, Patrick L J M Zeeuwen¹⁴

IRE-Dublin group (GRIPPSA members are denoted by *):

Louise Barnes^{8,9}, Linda E Campbell²⁸, Catriona Cusack²⁹, Ciara Coleman^{8,9}, Judith Conroy^{8,9}, Sean Ennis^{8,9}, Oliver Fitzgerald^{30*}, Phil Gallagher³⁰, Alan D Irvine^{31*}, Brian Kirby^{30*}, Trevor Markham²⁹, WH Irwin McLean²⁸, Ross McManus^{8,9*}, Joe McPartlin^{8,9}, Sarah F Rogers³⁰, Anthony W Ryan^{8,9}, Agnieszka Zawirska³⁰

ITA-Rome group:

Emiliano Giardina¹⁰, Tiziana Lepre¹⁰, Giuseppe Novelli^{10,11}, Carlo Perricone¹⁰

SPA-Barcelona group:

Xavier Estivill⁵, Gemma Martín-Ezquerro³², Ramon M Pujol³², Eva Riveira-Munoz⁵

SWE-Gothenburg group:

Annica Inerot³³, Åsa T Naluai¹³, Lena Samuelsson¹³,

SWE-Stockholm group:

Lotus Mallbris¹⁵, Mona Ståhle¹⁵, Katarina Wolk¹⁵

UK-Glasgow group:

A David Burden³, Joyce Leman³

UK-Manchester group:

Anne Barton¹⁷, Christopher EM Griffiths⁶, Richard B Warren⁶, Jane Worthington¹⁷, Helen S Young⁶

UK-Sheffield group:

Michael J Cork⁴, Rachid Tazi-Ahnini⁴

Groningen group (Italian and Dutch controls):

Isis Ricano-Ponce³⁴, Gosia Trynka³⁴, Cisca Wijmenga³⁴

¹Division of Genetics and Molecular Medicine, King's College London, London, UK; ²National Institute for Health Research (NIHR), Biomedical Research Centre, Guy's and St. Thomas' NHS Foundation Trust and King's College London, London, UK; ³Department of Dermatology, Western Infirmary, Glasgow, UK; ⁴Academic Unit of Dermatology Research, Department of Infection and Immunity, The University of Sheffield, Sheffield, UK; ⁵Genes and Disease Programme, Centre for Genomic Regulation (CRG) and UPF, Hospital del Mar Research Institute (CRG), and Public Health and Epidemiology Network Biomedical Research Centre (CIBERESP), Barcelona, Spain; ⁶Dermatological Sciences, Salford Royal NHS Foundation Trust, University of Manchester, Manchester Academic Health Science Centre, Manchester, UK; ⁷Department of Biosciences and Nutrition, Karolinska Institutet, Stockholm, Sweden, and Folkhälsan Institute of Genetics, Helsinki, Finland, and Department of Medical Genetics, University of Helsinki, Finland; ⁸Department of Clinical Medicine, Trinity College Dublin, Ireland; ⁹Institute of Molecular Medicine, Trinity College Dublin, Ireland ¹⁰National Agency for Evaluation of Universities and Research Institutes (ANVUR); ¹¹Research Center San Pietro Hospital, Rome, Italy; ¹²Institute of Human Genetics, University of Erlangen-Nuremberg, Erlangen, Germany; ¹³Department of Medical and Clinical Genetics, Institute of Biomedicine, Sahlgrenska Academy, University of Gothenburg, Gothenburg, Sweden; ¹⁴Department of Dermatology, Radboud University Nijmegen Medical Centre, Nijmegen, The Netherlands; ¹⁵Dermatology Unit, Department of Medicine, Karolinska Institutet, Stockholm, Sweden; ¹⁶Department of Dermatology, Medical University of Graz, Graz, Austria; ¹⁷Arthritis Research UK Epidemiology Unit, University of Manchester, Manchester Academic Health Science Centre, Manchester, UK; ¹⁸Division of Immunology, Infection and Inflammatory Disease; King's College London, London, UK; ¹⁹St John's Institute of Dermatology, King's College London, London, UK; ²⁰Department of Dermatology and Venerology, University of Helsinki, Helsinki, Finland; ²¹Asklepios Nordseeklinik, Westerland/Sylt, Germany; ²²TOMESA Clinics, Bad Salschlirf, Germany; ²³Division of Molecular Genetic Epidemiology, German Cancer Research Center (DKFZ), Heidelberg, Germany; ²⁴Department of Dermatology, University of Göttingen, Göttingen, Germany; ²⁵Department of Dermatology, University of Münster, Münster, Germany; ²⁶Psoriasis Rehabilitation Hospital, Bad Bentheim, Germany; ²⁷Department of Endocrinology and Department of Epidemiology and Biostatistics, Radboud University Nijmegen Medical Centre, Nijmegen, The Netherlands; ²⁸University of Dundee, Dundee, UK; ²⁹University College Hospital Galway, Galway, Ireland; ³⁰St Vincent's University Hospital, Dublin, Ireland; ³¹Department of Clinical Medicine, Trinity College Dublin, Our Lady's Children's Hospital Crumlin, Dublin, Ireland; ³²Dermatology Service, Hospital del Mar-IMAS, Barcelona, Spain; ³³Department of Dermatology and Venereology, Sahlgrenska University Hospital, Gothenburg, Sweden; ³⁴Genetics Department, University Medical Center Groningen and the University of Groningen, the Netherlands

Collaborative Association Study of Psoriasis (CASP)

Rajan P. Nair^{1*}, Kristina Callis Duffin^{2*}, Cindy Helms^{3*}, Jun Ding^{4*}, Philip E. Stuart¹, David Goldgar², Johann E. Gudjonsson¹, Yun Li⁴, Trilokraj Tejasvi¹, Justin Paschall¹⁷, M. J. Malloy¹⁸,

C. R. Pullinger¹⁸, J. P. Kane¹⁸, J. Gardner³, A. Perlmutter¹⁹, A. Miner¹⁹, Bing Jian Feng², Ravi Hiremagalore¹, Robert W. Ike²⁰, Henry W. Lim²¹, Enno Christophers⁶, Tilo Henseler⁶, Stefan Schreiber^{22,23}, Andre Franke²², Andreas Ruether⁵, Michael Weichenthal⁶, Dafna Gladman⁷, Proton Rahman⁸, Steven J. Schrodi⁹, Sampath Prahalad¹⁰, Stephen L Guthery¹⁰, Judith Fischer¹¹, Wilson Liao¹², Pui Kwok¹², Alan Menter¹³, G. Mark Lathrop¹¹, C. Wise¹⁴, Ann B. Begovich⁹, John J. Voorhees¹, Utah Psoriasis Initiative, James T. Elder^{1,15}, Gerald G. Krueger², Anne M. Bowcock³, Gonçalo R. Abecasis⁴

¹ Department of Dermatology, University of Michigan, Ann Arbor, MI; ² Department of Dermatology, University of Utah, Salt Lake City, UT; ³ Division of Human Genetics, Department of Genetics, Washington University at St. Louis, St. Louis, MO; ⁴ Center for Statistical Genetics, Department of Biostatistics, University of Michigan, Ann Arbor, MI ⁵ Institute for Clinical Molecular Biology, University of Kiel, Kiel, Germany; ⁶ Department of Dermatology, University of Kiel, Kiel, Germany; ⁷ Department of Rheumatology, University of Toronto, Toronto, Ontario; ⁸ Department of Medicine, Memorial University, St. John's, Newfoundland; ⁹ Celera, 1401 Harbor Bay Parkway, Alameda, CA; ¹⁰ Departments of Pediatrics, Rheumatology and Gastroenterology, University of Utah, Salt Lake City, UT; ¹¹ Centre National de Génotypage, Institut Génomique, Commissariat à l'Énergie Atomique, Evry, France; ¹² Department of Dermatology, University of California, San Francisco; ¹³ Department of Dermatology, Baylor University Medical Center, Dallas, TX; ¹⁴ Seay Center for Musculoskeletal Research, Texas Scottish Rite Hospital for Children, Dallas, TX; ¹⁵ Ann Arbor Veterans Affairs Hospital, Ann Arbor, MI; ¹⁷ National Center for Biotechnology Information, National Library of Medicine, National Institutes of Health, Bethesda, Maryland, USA; ¹⁸ Cardiovascular Research Institute and Center for Human Genetics, University of California-San Francisco, CA; ¹⁹ Department of Psychiatry, Washington University School of Medicine, St. Louis, MO; ²⁰ Department of Internal Medicine, University of Michigan Medical School, Ann Arbor, MI ²¹ Department of Dermatology, Henry Ford Hospital, Detroit, MI ²² Institute for Clinical Molecular Biology, University of Kiel, Germany; ²³ Department of General Medicine, University of Kiel, Germany

Psoriasis Association Genetics Extension (PAGE)

University of Michigan (UMich)

James T Elder^{1,2}, Philip E Stuart¹, Rajan P Nair¹, Trilokraj Tejasvi¹, Johann E. Gudjonsson¹, John J Voorhees¹

Lam C Tsoi³, Jun Ding³, Yanming Li³, Hyun M Kang³, Goncalo R Abecasis³

Christian-Albrechts-University (CAU) of Kiel

Andre Franke⁴, Eva Ellinghaus⁴, Stefan Schreiber⁴, Ulrich Mrowietz⁵, Stephan Weidinger⁵, Michael Weichenthal⁵

University of Toronto (UToronto)

Dafna D Gladman⁶, Fawnda J Pellett⁶, Vinod Chandran⁶, Cheryl F Rosen⁷

Memorial University (MU)

Proton Rahman⁸

University of Tartu (UTartu) and Estonian Genome Center University of Tartu (EGCUT)

Sulev Koks⁹, Külli Kingo¹⁰, Tonu Esko¹¹, Andres Metspalu¹¹

The Feinstein Institute for Medical Research (FIMR)

Peter Gregersen¹²

National Psoriasis Victor Henschel BioBank (NPF)

Andrew Henschel¹³, Marin Aurand¹³, Bruce Bebo¹³

Collaborative Research in the Region of Augsburg (KORA)

please see below for KORA membership

Henry Ford Hospital (HFH)

Henry W Lim¹⁴

¹Department of Dermatology, University of Michigan Ann Arbor, MI 48109, USA; ²Ann Arbor Veterans Affairs Hospital, Ann Arbor, MI 48105 USA; ³Department of Biostatistics, Center for Statistical Genetics, University of Michigan Ann Arbor, MI 48109, USA; ⁴Institute of Clinical Molecular Biology, Christian-Albrechts-University of Kiel, 24105 Kiel, Germany; ⁵Department of Dermatology, University Hospital, Schleswig-Holstein, Christian-Albrechts-University of Kiel, 24105 Kiel, Germany; ⁶Department of Medicine, Division of Rheumatology, University of Toronto, Toronto Western Hospital, Toronto, Ontario M5T 2S8, Canada; ⁷Department of Medicine, Division of Dermatology, University of Toronto, Toronto Western Hospital, Toronto, Ontario M5T2S8; ⁸Department of Medicine, Memorial University, St. John's, Newfoundland A1C 5B8, Canada; ⁹Department of Physiology, Centre of Translational Medicine and Centre for Translational Genomics, University of Tartu, 50409 Tartu, Estonia; ¹⁰Department of Dermatology and Venerology, University of Tartu, 50409 Tartu, Estonia; ¹¹Estonian Genome Center and Center of Translational Genomics; Estonian Biocenter; Institute of Molecular and Cell Biology, University of Tartu, 50409 Tartu, Estonia; ¹²Robert S. Boas Center for Genomics and Human Genetics, The Feinstein Institute for Medical Research, Manhasset, NY 11030; ¹³National Psoriasis Foundation, Portland, OR 97223 USA; ¹⁴Henry Ford Hospital, Detroit, Michigan, 48202, USA

Cooperative Research in the Region of Augsburg (KORA)

H. Erich Wichmann^{1,2,3}, Christian Gieger⁴, Thomas Illig⁵, Juliane Winkelmann^{6,7,8},

¹Institute of Epidemiology I, Helmholtz Centre Munich, German Research Center for Environmental Health, 85764 Neuherberg, Germany; ²Institute of Medical Informatics, Biometry and Epidemiology, Ludwig-Maximilians-University, 81377 Munich, Germany; ³Klinikum Grosshadern, 81377 Munich, Germany; ⁴Institute of Genetic Epidemiology, Helmholtz Centre Munich, German Research Center for Environmental Health, 85764 Neuherberg, Germany; ⁵Research Unit Molecular Epidemiology, Helmholtz Centre Munich, German Research Center for Environmental Health, 85764 Neuherberg, Germany; ⁶Department of Neurology, Technische Universität München, Munich, Germany; ⁷Institute of Human Genetics, Technische Universität München, Munich, Germany; ⁸Institute of Human Genetics, Helmholtz Zentrum Munich, German Research Center for Environmental Health, Munich, Germany;

Heinz Nixdorf Recall (Risk Factors, Evaluation of Coronary Calcification, and Lifestyle) study (HNR)

Susanne Moebus¹, Karl-Heinz Jöckel¹, Raimund Erbel²

¹Institute for Medical Informatics, Biometry and Epidemiology (IMIBE), University of Duisburg-Essen, Hufelandstr. 55, 45122 Essen, Germany; ²Clinic of Cardiology, West German Heart Centre, University Hospital of Essen, University Duisburg-Essen, Essen, Germany

Grant Support Acknowledgments

JTE, GRA, RPN, PES, TT, and LCT were supported by National Institutes of Health (NIH) grants R01 AR042742, R01 AR050511, and AR054966. JTE is supported by the Ann Arbor Veterans Affairs Hospital. GRA was supported by NIH grant HG007022. RCT and JK were supported by the Department of Health via the National Institute for Health Research (NIHR) comprehensive Biomedical Research Centre awards to Guy's & St. Thomas' NHS Foundation Trust in partnership with King's College London. RCT, FON, AH and JNB were funded by the UK Medical Research Council (G06011387). The Wellcome Trust Case Control Consortium 2 project was funded by the Wellcome Trust (085475/B/08/Z and 083948/Z/07/Z). RM was supported by Science Foundation Ireland grant 09/IN.1/B2640. MJC was supported by the Psoriasis Association and by the Cecil King Memorial Foundation. JEG was supported by NIH award K08 AR060802, the Frances and Kenneth Eisenberg Emerging Scholar Award of the A. Alfred Taubman Medical Research Institute, the American Skin Association, and the Dermatology Foundation. SW was supported by grants from the German Research Foundation (DFG grants WE 2678/4-1 and WE 2678/8-1), and the Federal Ministry of Education and Research as part of the German National Genome Research Network (NGFN 01GS 0818), the Christiane Kühne Center for Allergy Research and Education (<http://www.ck-care.ch/>), the Technische Universität München, and the COST (European Cooperation in Science and Technology) action BM0903. SK was supported by the University of Tartu Translation Genomics Centre project, by a grant from the European Regional Development Fund (Centre of Translational Medicine) and by the COST actions BM0901 and BM0903. KK was supported by the Estonian Ministry of Education grant SF0180043s07. Estonian Genome Center from the University of Tartu received financing by (ENGAGE, OPENGENE), targeted financing from Estonian Government SF0180142s08, Estonian Research Roadmap through Estonian Ministry of Education and Research (3.2.0304.11-0312), Center of Excellence in Genomics (EXCEGEN) and Development Fund of University of Tartu (SP1GVARENG). AMB was supported by NIH grant R01 AR050266. DDG was supported by the Krembil Foundation, the Canadian Institutes of Health Research NET grant, and the Arthritis Society. PR was supported by the Canadian Institute of Health Research and the Arthritis Society of Canada. AR was supported by German Federal Ministry of Education and Research (BMBF) under the Ancyloss project (grant 01 EC 1002 A). The KORA Augsburg studies were financed by the Helmholtz Zentrum München, German Research Center for Environmental Health, Neuherberg, Germany and supported by grants from the German Federal Ministry of Education and Research (BMBF). Part of this work was financed by the German National Genome Research Network (NGFN). The HNR study is supported by the Heinz Nixdorf Foundation (Germany). Additionally, the study is funded by the German Ministry of Education and Science and the German Research Council (DFG; Project SI 236/8-1, SI236/9-1, ER 155/6-1). Part of the genotyping was financed by the German National Genome Research Network (NGFN).

Additional Methods and results

Association Analysis

Logistic regression was used to perform association analysis for the imputed dosages for the GWAS datasets: Kiel (mach2dat^{7,9}), CASP (mach2dat), and the WTCCC2 (SNPTESTv2¹⁰). Linear mixed modeling as implemented in EMMAX¹¹ was used to perform association analyses for the two ImmunoChip datasets separately due to its ability to control for population stratification and cryptic relatedness. The Balding-Nicholls algorithm¹² was used to generate the kinship matrix.

Meta-analysis

Sample size weighting was employed to combine P-values across the 5 studies using METAL, employing effective sample sizes¹³. To calculate the meta-odds ratios (ORs) for each SNP, we performed logistic regression analysis for the ImmunoChip data, using the top ten PCs to adjust for population stratification. The meta-ORs were then calculated as follows:

$$\beta_{weighted} = \frac{\sum_{i=1}^D N_i^{eff} \beta_i}{\sum_{i=1}^D N_i^{eff}}$$
$$OR_{meta} = e^{\beta_{weighted}}$$

where β_i is the coefficient estimated from the logistic regression analysis, and D is the number of datasets.

Conditional analysis of the newly identified signal at 10.82 Mb on chr19

Conditional analysis was performed to determine if the signal tagged by rs892085 at 10.82 Mb on chromosome 19 is new signal associated with psoriasis. We conditioned on two SNPs from the known locus near *TYK2*: i) the previously identified SNP rs12720356³; ii) the current best SNP from our meta-analysis rs34536443. Each conditional analysis was first performed individually for each study (logistic regression framework for the three GWAS; linear mixed model for the ImmunoChip datasets). Meta-analysis based on the conditional results was then performed using METAL¹³. Since rs34536443 has poor imputation quality ($r^2=0.17$) in the CASP dataset, we excluded this dataset when conditioning on rs34536443. As shown in **Supplementary Table 5**, rs892085 achieves genome-wide significance after conditioning on either of the two *TYK2* SNPs, indicating that it is an independent signal for psoriasis susceptibility.

Conditional analysis

We performed conditional analysis for the 3 GWAS datasets using logistic regression, whereas we used the linear mixed modeling implemented in EMMAX for the two ImmunoChip datasets. The most strongly associated SNPs from the 19 known loci achieving genome-wide significance

in this study and the 15 new loci (**Table 1**) were used as covariates for all five studies. Because the CASP GWAS did not have good imputation quality ($r^2 > 0.3$) for SNP rs34536443; the second best SNP in the 19q13.2 region (rs2304256: $P_{\text{comb}} = 1.20 \times 10^{-20}$) was used in the conditional analysis of the CASP dataset. We next used METAL to combine the conditional analysis results; for the 19q13.2 region (ie ± 500 kb surrounding SNP rs34536443) the meta-analysis excluded the CASP dataset, whereas we used all five datasets for the other regions.

Conditional analysis on the ERAP2 signal

For the follow-up conditional analysis of the *ERAP2* signal, we used only the best *ERAP1* SNP (rs27432) as a covariate. Conditioning only on rs27432, the most significant *ERAP1* SNP in the unconditional analysis, continued to support the *ERAP2* signal ($P = 3.6 \times 10^{-7}$). When considered together with the LD results between the 2 SNPs ($r^2 = 0.17$ and $D' = 0.75$ for PAGE; $r^2 = 0.18$ and $D' = 0.76$ for GAPC), these suggest the two loci might have opposite effects arising from the same haplotype. To test this, we performed a haplotype association test using the PAGE phased genotypes data for rs27432 and rs2910686. The risk/non-risk alleles for these SNPs are A/G and C/T, respectively, and their haplotype frequencies are: 0.03 (AC), 0.25 (AT), 0.41 (GC), and 0.31 (GT). The haplotype association analysis for *ERAP1-ERAP2* was performed using logistic regression, with haplotype counts of AT (*ERAP1* risk / *ERAP2* nonrisk), GC (*ERAP1* nonrisk / *ERAP2* risk), and AC (*ERAP1* risk / *ERAP2* risk) as 3 independent variables, and the top 10 PCs as covariates. We found that the AT (*ERAP1* risk / *ERAP2* nonrisk) haplotype is strongly associated ($P = 3.1 \times 10^{-6}$), the GC (*ERAP1* nonrisk / *ERAP2* risk) haplotype is weakly associated ($P = 2.7 \times 10^{-2}$), and the rare AC (*ERAP1* risk / *ERAP2* risk) haplotype is not associated ($P = 0.25$), suggesting that the genetic effect of *ERAP2* is masked by *ERAP1*.

Causal SNP lookup

We identified SNPs in strong LD (≥ 0.9) with the most significant SNP from each of the known and new loci listed in Table 1, including the secondary signals identified by the conditional analysis. LD among SNPs was computed from 379 European-ancestry samples in the 1000 Genomes project (May 21st 2011 version). We then used ANNOVAR¹⁴ to annotate each of these SNPs. All identified SNPs affecting the predicted protein sequence were missense variants; none were nonsense or splicing mutations. SIFT¹⁵ and PolyPhen¹⁶ were used to predict the impact of the mutations on the function of the protein.

Epistasis

We performed an analysis of epistasis using the most significantly associated SNP from each of the 34 loci in **Tables 1** reaching genome-wide significance in this study. Logistic regression was used to model epistasis in the five datasets using a risk allele dosage model; for the PAGE and GAPC datasets the top 10 PCs were included as covariates. For each pair of SNPs, the likelihood ratio test was employed to compute the p-value of the interaction term for each dataset. Epistasis results were combined using METAL, again omitting the CASP dataset for the 19q13.2 region.

Gene expression

We retrieved the SNPs that reside within 500 kb (3 Mb for MHC) of each of the most strongly associated SNPs identified from the known or new loci, including secondary signals from the conditional analysis. Using European-ancestry samples from the 1000 Genomes Project, we then used the tag SNP function from PLINK to identify genomic regions in strong LD ($r^2 > 0.7$) with the most significant SNP; we then extended the tagged regions by 50kb on each side. We identified genes overlapping any of the extended regions, and we used false discovery rate (FDR) ≤ 0.05 and fold-change (FC) ≤ 0.67 or ≥ 1.5 to declare genes as differentially expressed in psoriatic skin lesions from a previous microarray experiment^{17,18}.

eQTL lookup

To check whether any of the 34 genome-wide significant SNPs that were known or new and the 5 secondary signals identified by conditional analysis were eQTLs, we queried the cis-psoriasis eQTL database (in normal and psoriatic skin) compiled by Ding *et al.*¹⁹, and we used $P < 1 \times 10^{-7}$ as criteria to look for eQTLs using expression of microarray probesets corresponding to Entrez genes. (available at <http://www.sph.umich.edu/csg/junding/eQTL/TableDownload/>).

Since the imputation was performed using Hapmap reference panel in Ding *et al.*, we performed eQTL analysis using our imputed CASP GWAS data (using 1000 genomes for reference panel) and their corresponding gene expression microarray data (data as described in Ding *et al.*¹⁹). The significant results are consistent with the cis-psoriasis eQTL database.

Heritability explained by psoriasis-associated SNPs

We estimated the variance in liability (locus-specific heritability)²⁰ that can be explained by the known, new, and the secondary signals of psoriasis-associated SNPs using the approach described by So *et al.*⁶. We set the prevalence of the disease as 0.02, and calculated risk ratios (RR) from our estimated ORs using an iterative approach²¹.

References

1. Ellinghaus, E. *et al.* Genome-wide association study identifies a psoriasis susceptibility locus at TRAF3IP2. *Nat Genet* **42**, 991-5 (2010).
2. Nair, R.P. *et al.* Genome-wide scan reveals association of psoriasis with IL-23 and NF-kappaB pathways. *Nat Genet* **41**, 199-204 (2009).
3. Strange, A. *et al.* A genome-wide association study identifies new psoriasis susceptibility loci and an interaction between HLA-C and ERAP1. *Nat Genet* **42**, 985-90 (2010).
4. Trynka, G. *et al.* Dense genotyping identifies and localizes multiple common and rare variant association signals in celiac disease. *Nat Genet* **43**, 1193-201 (2011).
5. Elder, J.T. *et al.* Molecular dissection of psoriasis: integrating genetics and biology. *J Invest Dermatol* **130**, 1213-26 (2010).
6. So, H.C., Gui, A.H., Cherny, S.S. & Sham, P.C. Evaluating the heritability explained by known susceptibility variants: a survey of ten complex diseases. *Genet Epidemiol* **35**, 310-7 (2011).
7. Pruim, R.J. *et al.* LocusZoom: regional visualization of genome-wide association scan results. *Bioinformatics* **26**, 2336-7 (2010).
8. Bastian, M., Heymann, S. & Jacomy, M. Gephi: an open source software for exploring and manipulating networks. in *International AAAI Conference on Weblogs and Social Media* (2009).
9. Li, Y., Willer, C., Sanna, S. & Abecasis, G. Genotype imputation. *Annu Rev Genomics Hum Genet* **10**, 387-406 (2009).
10. Marchini, J. & Howie, B. Genotype imputation for genome-wide association studies. *Nat Rev Genet* **11**, 499-511 (2010).
11. Kang, H.M. *et al.* Variance component model to account for sample structure in genome-wide association studies. *Nat Genet* **42**, 348-54 (2010).
12. Balding, D.J. & Nichols, R.A. A method for quantifying differentiation between populations at multi-allelic loci and its implications for investigating identity and paternity. *Genetica* **96**, 3-12 (1995).
13. Willer, C.J., Li, Y. & Abecasis, G.R. METAL: fast and efficient meta-analysis of genomewide association scans. *Bioinformatics* **26**, 2190-1 (2010).
14. Wang, K., Li, M. & Hakonarson, H. ANNOVAR: functional annotation of genetic variants from high-throughput sequencing data. *Nucleic Acids Res* **38**, e164 (2010).
15. Kumar, P., Henikoff, S. & Ng, P.C. Predicting the effects of coding non-synonymous variants on protein function using the SIFT algorithm. *Nat Protoc* **4**, 1073-81 (2009).
16. Adzhubei, I.A. *et al.* A method and server for predicting damaging missense mutations. *Nat Methods* **7**, 248-9 (2010).
17. Gudjonsson, J.E. *et al.* Assessment of the psoriatic transcriptome in a large sample: additional regulated genes and comparisons with in vitro models. *J Invest Dermatol* **130**, 1829-40 (2010).
18. Gudjonsson, J.E. *et al.* Global gene expression analysis reveals evidence for decreased lipid biosynthesis and increased innate immunity in uninvolved psoriatic skin. *J Invest Dermatol* **129**, 2795-804 (2009).
19. Ding, J. *et al.* Gene expression in skin and lymphoblastoid cells: Refined statistical method reveals extensive overlap in cis-eQTL signals. *Am J Hum Genet* **87**, 779-89 (2010).
20. Falconer, D. The inheritance of liability to certain diseases, estimated from the incidence among relatives. *Ann Hum Genet* **29**, 51-76 (1965).
21. So, H.C. & Sham, P.C. Effect size measures in genetic association studies and age-conditional risk prediction. *Hum Hered* **70**, 205-18 (2010).