

The post-translational modification of the *Clostridium difficile* flagellin affects motility, cell surface properties and virulence

Alexandra Faulds-Pain,¹ Susan M. Twine,² Evgeny Vinogradov,² Philippa C. R. Strong,² Anne Dell,³ Anthony M. Buckley,⁴ Gillian R. Douce,⁴ Esmeralda Valiente,¹ Susan M. Logan² and Brendan W. Wren^{1*}

¹London School of Hygiene and Tropical Medicine, Keppel Street, London WC1E 7HT, UK.

²Vaccine Program, Human Health Therapeutics Portfolio, National Research Council, Ottawa, ON K1A 0R6, Canada.

³Department of Life Sciences, Imperial College, London SW7 2AZ, UK.

⁴Institute of Infection, Immunity and Inflammation, Glasgow Biomedical Research Centre, University of Glasgow, Glasgow, UK.

Summary

Clostridium difficile is a prominent nosocomial pathogen, proliferating and causing enteric disease in individuals with a compromised gut microflora. We characterized the post-translational modification of flagellin in *C. difficile* 630. The structure of the modification was solved by nuclear magnetic resonance and shown to contain an *N*-acetylglucosamine substituted with a phosphorylated *N*-methyl-L-threonine. A reverse genetics approach investigated the function of the putative four-gene modification locus. All mutants were found to have truncated glycan structures by LC-MS/MS, taking into account bioinformatic analysis, we propose that the open reading frame CD0241 encodes a kinase involved in the transfer of the phosphate to the threonine, the CD0242 protein catalyses the addition of the phosphothreonine to the *N*-acetylglucosamine moiety and CD0243 transfers the methyl group to the threonine. Some mutations affected motility and caused cells to aggregate to each other and abiotic surfaces. Altering the structure of the flagellin modification impacted on colonization

and disease recurrence in a murine model of infection, showing that alterations in the surface architecture of *C. difficile* vegetative cells can play a significant role in disease. We show that motility is not a requirement for colonization, but that colonization was compromised when the glycan structure was incomplete.

Introduction

The intestinal pathogen *Clostridium difficile* is a strictly anaerobic, Gram-positive bacterium. In recent years it has become a huge burden both economically and to human health due to its global spread throughout health care environments, where it causes disease ranging from mild diarrhoea to life threatening pseudomembranous colitis (Loo *et al.*, 2005; Goorhuis *et al.*, 2007; Kuijper *et al.*, 2007). Its ability to differentiate into endospores, a metabolically dormant and highly robust cell form, is essential in its transmission as this allows it to survive external stresses such as desiccation, osmotic shock, and contact with chemicals such as disinfectants (Lawley *et al.*, 2010; Deakin *et al.*, 2012). Two large clostridial toxins, TcdA and TcdB are considered the main virulence factors associated with disease symptoms, their production leading to the disruption and eventual destruction of the intestinal epithelium (Voth and Ballard, 2005). The generation of at least one of these two potent toxins is essential for the pathogenesis of this organism (Lyras *et al.*, 2009; Kuehne *et al.*, 2010); however, other properties of *C. difficile* contribute to its success as a pathogen by promoting the colonization of the host, which may be influential in disease recurrence.

Bacterial surface-associated proteins are often involved in host colonization and immune evasion (Pizarro-Cerda and Cossart, 2006). *C. difficile* produces many such proteins, including peritrichous flagella, a paracrystalline S-layer, cell wall proteins and a putative sortase and sorted proteins (Hennequin *et al.*, 2003; Eidhin *et al.*, 2006; Kirby *et al.*, 2009; Reynolds *et al.*, 2011). Flagella are the organelles of bacterial propulsion and have been found to be important for the penetration of the mucous layer and adherence to the gut mucosa in enteric pathogens (Liu *et al.*, 1988; Grant *et al.*, 1993), although in *C. difficile* the

Accepted 13 August, 2014. *For correspondence. E-mail Brendan.wren@lshtm.ac.uk; Tel. (+44) 207 927 2288; Fax (+44) 207 637 2131.

© 2014 The Authors. *Molecular Microbiology* published by John Wiley & Sons Ltd.

This is an open access article under the terms of the Creative Commons Attribution License, which permits use, distribution and reproduction in any medium, provided the original work is properly cited.

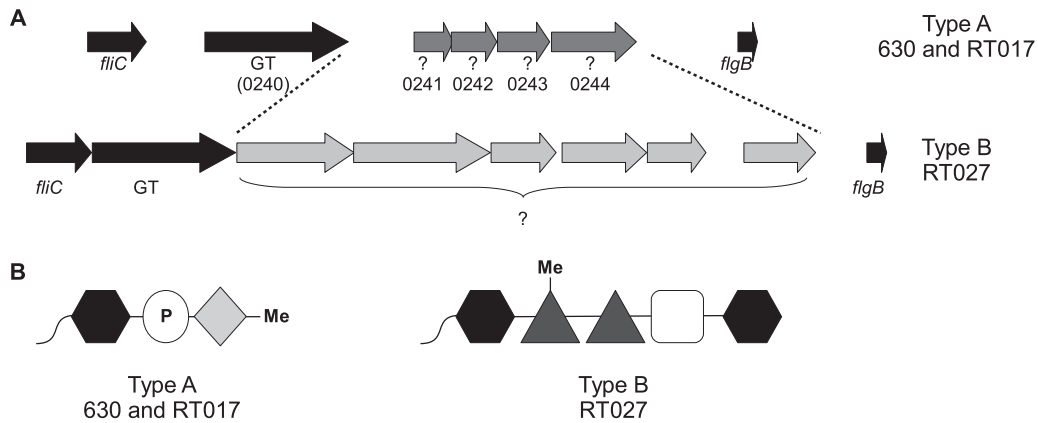


Fig. 1. Schematic diagram illustrates the alternative flagellin modification gene loci type A and type B. A. The flagella structural genes *fliC* and *flgB* flank the genes predicted to be involved in flagellin modification in the ribotype 012 strain 630 and the ribotype 027 strains. The gene adjacent to *fliC* in both loci is a predicted glycosyltransferase (GT) and the ORFs in grey are the remaining putative modification genes, predicted to be involved in flagellin modification. B. The predicted modification structures of the type A 630/RT017 strains and the type B RT027 strains. The black hexagon represents a HexNAc, the white circle represents a phosphate group, Me denotes a methyl group, dark gray triangles represent a deoxyhexose and the white square a heptose, the light gray diamond represents an unidentified structure.

flagella are not essential for virulence and colonization of the hamster or murine model (Dingle *et al.*, 2011; Aubry *et al.*, 2012; Baban *et al.*, 2013).

Flagellin is the main protein component of the flagella; it forms the long whip-like filament which when rotated by the basal subunits of the structure causes motility. Some bacteria produce ‘simple’ flagella filaments which are composed of a single flagellin, while others produce ‘complex’ flagella filaments made up of multiple flagellins (Logan, 2006). In a number of Gram-positive and Gram-negative bacteria the flagellin is post-translationally modified with an O-linked oligosaccharide at serine and/or threonine residues on the highly variable, surface-exposed domains of the protein (Logan, 2006). Enzymes, often encoded alongside the flagella genes, transfer these post-translational modifications (PTMs) specifically to the flagellin. The nature of this specificity is yet to be determined as no consensus sequence is recognized by these enzymes. In many bacteria these flagellin PTMs are essential for motility and mutants of the PTM enzymes are not only unable to modify their flagellin but are also unable to secrete the flagellin from the cell, as has been described in *Campylobacter jejuni*, *Helicobacter pylori*, *Caulobacter crescentus*, *Aeromonas caviae* and *Shewanella oneideinsis* (Ewing *et al.*, 2009; Asakura *et al.*, 2010; Faulds-Pain *et al.*, 2011; Parker *et al.*, 2012; Sun *et al.*, 2013). However, this is not the case for all bacteria, for example in *Pseudomonas aeruginosa* motility is unaffected when flagellin modification genes are mutated (Schirm *et al.*, 2004; Verma *et al.*, 2006).

C. difficile produces a simple flagella filament with a single flagellin which is post-translationally modified. As with most bacterial O-linked PTM systems, the genes

encoding the modification enzymes are colocalized with those encoding the target protein. In *C. difficile* strains these enzymes are thought to be encoded among the flagella structural and regulatory genes, between the flagellin gene, *fliC* and the putative flagella basal body rod gene, *flgB* (Stabler *et al.*, 2009).

It has been found that the *C. difficile* flagellin can be modified with at least two oligosaccharide structures, herein referred to as type A and type B, and that these structural variations are strain-specific and reflected in variations at the genome level (Fig. 1; Twine *et al.*, 2009). The coding sequence (CDS) immediately downstream of *fliC* is conserved in the type A and type B strains and encodes a putative glycosyltransferase (GT) (Fig. 1A), which is essential for the modification of the flagellin and motility but not flagellin secretion or filament formation (Twine *et al.*, 2009). The sugar associated with the flagellin protein in both type A and type B oligosaccharide modifications, has been identified by mass spectrometry to be an *N*-acetyl hexosamine (HexNAc) (Twine *et al.*, 2009), suggesting that this first sugar is transferred to the flagellin by this common GT. Beyond this initial sugar neither the modification genes nor the structure of the PTMs are conserved in the type A and type B strains (Smith *et al.*, 1981; Verma *et al.*, 2006). The type A flagellin modification was previously proposed to be a methylated aspartic acid attached to the initial HexNAc via a phosphate bond in the non-epidemic strain 630 (Twine *et al.*, 2009). The type B structure was identified among BI-1/NAP-1/ ribotype 027 epidemic strains. The oligosaccharide structure of these modifications is complex and consists of multiple monosaccharide residues which includes a HexNAc moiety through which the glycan is linked to the protein as well as

two deoxyhexose residues and a heptose (Fig. 1B; Twine *et al.*, 2009; Hitchen *et al.*, 2010).

It has been hypothesized that as the type B PTM was identified in BI-I/NAP-I/ ribotype 027 outbreak strains, while the type A PTM was found in a non-epidemic strain, the type B PTMs could be contributing to the hypervirulence of these organisms (Stabler *et al.*, 2009; Twine *et al.*, 2009). In this study however we identified the presence of the type A loci in the toxin A negative epidemic ribotype 017 (RT017) strains of *C. difficile*, indicating that the relative importance of the type A and type B modifications might not be easily defined. We investigate the flagellin type A PTMs in both the 630 strain and an epidemic RT017 strain M68. A definitive structure for this modification was determined by NMR spectroscopy and the role of the putative modification genes were assessed. We also investigated the role of motility and flagellin modification in the colonization of C57BL/6 mice, finding that motility is not a requirement but that colonization was compromised when the glycan structure was incomplete.

Results

Orthologues of the type A modification gene cluster are found only in P. aeruginosa PA01 strains

Molecular typing and sequence analysis has revealed that there are at least five clonal lineages of *C. difficile*, designated clades one to five (He *et al.*, 2010; Stabler *et al.*, 2012), and that all have been involved in outbreaks of *C. difficile*-associated disease. Utilizing ACT comparisons; putative flagellin modification gene loci were compared among the five clonal lineages of *C. difficile* strains. Orthologues of the 630 type A modification genes were found in only one of these lineages which includes the epidemic RT017 strains.

To determine whether the type A modification genes are commonly found associated with flagella genes, BLASTP analysis was carried out with the sequences of strain 630 open reading frames (ORFs) CD0241, CD0242, CD0243 and CD0244. While orthologues of the ORFs CD0241 and CD0242 were occasionally identified together in other genomes (such as *Helicobacter hepaticus*) they were not associated with any known structural orthologues such as the flagella. In fact it was only in strain PA01 of *P. aeruginosa* where orthologues of CD0241, CD0242 and CD0243 were clustered together and like *C. difficile* they were found within the flagella genetic locus. It was noted previously that the flagellin modification of the PA01 flagellin was similar to that of *C. difficile* 630 (Twine *et al.*, 2009), containing a methylated amino acid (in this case a tryptophan) attached via a phosphate bond to a deoxyhexose sugar on the surface of the flagellin (Verma *et al.*, 2006). The genes PA1088, PA1089 and PA1090, located

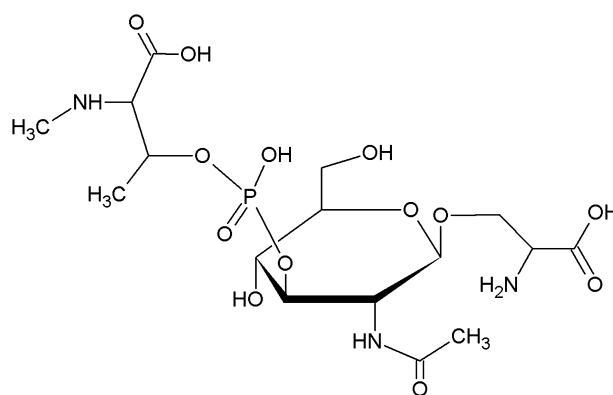


Fig. 2. Schematic diagram illustrates the structure of the *C. difficile* 630 flagellar glycan shown in O-linkage to a serine residue, solved by NMR.

directly upstream of the flagellin GT and flagellin genes in *P. aeruginosa* PA01 strains, are orthologues of CD0243, CD0241 and CD0242 respectively and are involved in the modification of the PA01 flagellin. Their amino acid similarity, location and the similar structure of the modification indicate that these genes may have a similar function in *C. difficile*. No orthologue of the CD0244 ORF was found to be co-located with the other three ORFs in *P. aeruginosa* or any other organism and BLASTP searches only identified hypothetical proteins.

NMR analysis of the type A flagellin solves the structure of its post-translational modification

The structure of the *C. difficile* 630 flagellin glycan has been previously studied by LC-MS/MS and defined as a HexNAc sugar carrying a phosphate linked to a moiety which was suggested to be a methylated aspartic acid (Fig. 1B). This glycan was attached to the flagellin via the HexNAc at five sites (S¹⁴¹, S¹⁷⁴, T¹⁸³, S¹⁸⁸ and S²⁰⁵ [S = serine and T = threonine]) (Twine *et al.*, 2009). However, it has since been noted that at a mass of 115 Da the methylated amino acid is too small to be a methyl-aspartic acid (129 Da). In order to solve the structure of this modification, nuclear magnetic resonance (NMR) analysis of the flagellin glycan was carried out. Glycopeptides were released from the purified glycoprotein by Proteinase K treatment and isolated using size-exclusion and anion-exchange chromatography. Enzymatic hydrolysis did not cleave all amino acids and the product represented a mixture of glycosylated short peptides. NMR analysis using 2D spectra (gCOSY, TOCSY, ROESY, ¹H-¹³C HSQC, ¹H-¹³C HMBC, ¹H-³¹P HMQC) indicated that the single HexNAc monosaccharide is a N-acetyl-β-glucosamine (GlcNAc) (all vicinal coupling constants 8–10 Hz), linked to a serine residue on the flagellin protein (Fig. 2). GlcNAc was phosphorylated at O-3, which caused a downfield shift

Table 1. NMR data (δ , ppm; Varian INOVA 500 MHz, 25°C) for the *C. difficile* 630 glycopeptide.

	H/C 1	H/C 2	H/C 3	H/C 4	H/C 5	H/C 6	Me
GlcNAc	4.65	3.85	4.17	3.63	3.51	3.79; 3.93	
	100.1	55.6	79.9	70.5	76.6	61.6	
N-Me-L-Thr		3.52	4.51	1.41			2.76
	172.0	70.5	73.0	19.6			33.9

Exact mass of glycosyl cation 398.109035.

NAc signals C-1 176.1; H/C-2 2.08/23.8 ppm. ^{31}P at -0.5 ppm.

of H/C-3 signals (Table 1). Additional signals were present, belonging to HOOC-CHX-CHX-CH₃ fragment and a methyl group (Table 1). HMBC correlations between H/C of the methyl group and H/C-2 of this fragment indicated that methyl group was linked to the C-2 through a heteroatom. By the signal position of the C-2 at 70.5 ppm this heteroatom was most probably nitrogen. A downfield shift of the C-2 signal from its expected position of approximately 55 ppm was thus caused by N-methylation. C-3 carried a hydroxyl group which followed from the position of the C-3 signal at 73 ppm. The H-3 signal of the amino acid was shifted to 4.5 ppm due to phosphorylation. Overall this represents phosphorylated N-methylthreonine, in agreement with MS data indicating the mass of the glycosyl moiety at 398.1 amu (Fig. 2). Absolute L-configuration and identity of the N-methylthreonine was confirmed by GC of its acetylated ester with optically pure 2-octanol.

The linkage between N-methylthreonine and GlcNAc was determined from the ^1H - ^{31}P HMQC spectrum which showed correlations between H-3 of GlcNAc and H-3 of the N-methylthreonine and the same ^{31}P signal at -0.5 ppm. To summarize, NMR revealed that the 630 glycan is formed of a single GlcNAc linked to a phosphorylated N-methyl-L-threonine at the oxygen at C3 of the sugar (Fig. 2).

The type A modification genes are essential for motility in strain 630

Flagellin modification is essential to motility in many organisms which modify their flagellins including *C. difficile*, in which mutation of the GT believed to transfer the first sugar to the flagellin protein causes a loss of motility in 630 Δerm (Twine *et al.*, 2009). To determine whether the other putative type A modification genes are required for *C. difficile* motility, mutations in the 630 ORFs CD0241, CD0242, CD0243 and CD0244 were generated by Clostron mutagenesis in 630 Δerm (Table 2 for all strains and plasmids). These mutants were assessed for motility by different methods as have been previously described (Twine *et al.*, 2009; Baban *et al.*, 2013), the most reproducible and quantifiable results were achieved on *C. difficile* minimal media (CDMM) motility plates. In all assays the ORFs CD0241,

CD0242 and CD0244 were found to be essential for the motility of *C. difficile* 630 Δerm , with the normal swimming phenotype of the parental strain being completely abolished in these mutants, this was also observed in mutations of *fliC* and the initial GT CD0240 as was previously described (Fig. 3A; Twine *et al.*, 2009). The non-motile phenotypes were all restored on complementation *in trans* (Fig. 3A), although the phenotypes of the *fliC*, CD0241 and CD0244 mutants were not restored to wild type levels. The mutant of CD0243 formed smaller swarms than the parental strain; however this difference was not statistically significant (Fig. 3A).

It was previously observed by Twine and co-workers that despite being non-motile, the GT CD0240 mutant still produced polymerized flagella filaments, although they were truncated and fewer in number compared to the parental strain (Twine *et al.*, 2009). To determine whether this was also true of the CD0241, CD0242, CD0243 and CD0244 putative flagellin modification mutants, we extracted the cell surface-associated proteins by glycine extraction and probed them with an anti-FliC antibody on a Western blot. All mutants were found to still produce flagellin, although its size varied (Fig. 3B). This is likely to be caused by alterations in the modifications leading to changes in the size of the protein.

Individual cells were visualized by negative stain transmission electron microscopy (TEM) by which the presence of flagella filaments associated with the surface of the cells in 630 Δerm and the CD0241, CD0242, CD0243 and CD0244 (Fig. 3C). On further analysis of these electron micrographs it was observed that the flagella of the non-motile mutants of CD0241, CD0242 and CD0244 appeared to clump together, which was not the case for the motile parental strain, 630 Δerm , or the motile mutant CD0243 whose flagella filaments were distributed evenly around the cell.

Mutations in the type A modification genes cause alterations of the PTM

Disruption of the putative GT gene, CD0240, was previously reported to result in an inability to attach glycan to the sites of modification on the flagellin (Twine *et al.*, 2009). In

Table 2. Bacterial strains and plasmids.

Strain/plasmid	Genotype or description	Reference(s) or source
Strains		
<i>E. coli</i>		
Top10	F ⁻ <i>mcrA</i> Δ(<i>mrr-hsdRMS-mcrBC</i>) φ80 <i>lacZ</i> Δ <i>M15</i> Δ <i>lacX74</i> <i>nupG</i> <i>recA1</i> <i>araD139</i> Δ(<i>ara-leu</i>)7697 <i>galE15</i> <i>galK16</i> <i>rpsL</i> (Str ^r) <i>endA1</i> λ ⁻	Invitrogen
CA434	<i>E. coli</i> HB101 [F ⁻ <i>mcrB</i> <i>mrr</i> <i>hsdS20</i> (r _B ⁻ m _B ⁻) <i>recA13</i> <i>leuB6</i> <i>ara-14</i> <i>proA2</i> <i>lacY1</i> <i>galK2</i> <i>xyI-5</i> <i>mtl-1</i> <i>rpsL20</i> (Sm ^r) <i>glnV44</i> λ ⁻] containing plasmid R702	Williams <i>et al.</i> (1990)
<i>C. difficile</i>		
630Δ <i>erm</i>	Derivative of 630 strain, erythromycin sensitive	Hussain <i>et al.</i> (2005)
630Δ <i>erm-fliC</i>	<i>fliC</i> ::CT insertion mutant derived from 630Δ <i>erm</i>	Twine <i>et al.</i> (2009)
630Δ <i>erm</i> -0240	0240 mutant derived from 630Δ <i>erm</i> by clostron insertion	Twine <i>et al.</i> (2009)
M68Δ <i>erm</i>	M68Δ <i>erm</i> : Derived from M68 by deletion of <i>ermB</i>	Faulds-Pain and Wren (2013)
M68Δ <i>fliC</i>	M68Δ <i>fliC</i> : Derived from M68 by deletion of <i>fliC</i>	Faulds-Pain and Wren (2013)
630Δ <i>erm</i> -0241::CT	0241 mutant derived from 630Δ <i>erm</i> by clostron insertion	This study
630Δ <i>erm</i> -0242::CT	0242 mutant derived from 630Δ <i>erm</i> by clostron insertion	This study
630Δ <i>erm</i> -0243::CT	0243 mutant derived from 630Δ <i>erm</i> by clostron insertion	This study
630Δ <i>erm</i> -0244::CT	0244 mutant derived from 630Δ <i>erm</i> by clostron insertion	This study
M68Δ <i>erm</i> -0242::CT	0242 mutant derived from M68Δ <i>erm</i> by clostron insertion	This study
M68Δ <i>erm</i> -0243::CT	0243 mutant derived from M68Δ <i>erm</i> by clostron insertion	This study
630Δ <i>erm</i> -0241 Δ <i>fliC</i>	Double mutant <i>fliC</i> deletion mutant derived from 630Δ <i>erm</i> -0241::CT	This study
630Δ <i>erm</i> -0242 Δ <i>fliC</i>	Double mutant <i>fliC</i> deletion mutant derived from 630Δ <i>erm</i> -0242::CT	This study
630Δ <i>erm</i> -0244 Δ <i>fliC</i>	Double mutant <i>fliC</i> deletion mutant derived from 630Δ <i>erm</i> -0244::CT	This study
Plasmids		
pMTL84151	<i>E. coli</i> – <i>C. difficile</i> shuttle plasmid (pCD6; <i>catP</i> ; ColE1+ <i>tra</i>)	Heap <i>et al.</i> (2009)
p <i>fliC</i> _comp	pMTL84151, with <i>C. difficile</i> 630 <i>fliC</i> and its native promoter	This study
pMTL84153	<i>E. coli</i> – <i>C. difficile</i> shuttle plasmid (pCD6; <i>catP</i> ; ColE1+ <i>tra</i> ; <i>fdx</i> promoter)	Heap <i>et al.</i> (2009)
p0241_comp	pMTL84153 with CD0241 cloned behind the <i>fdx</i> promoter	This study
p0242_comp	pMTL84153 with CD0242 cloned behind the <i>fdx</i> promoter	This study
p0244_comp	pMTL84153 with CD0244 cloned behind the <i>fdx</i> promoter	This study
pMTL007C-E2-CD0241	Clostron plasmid retargeted to CD0241 at 231/232s (DNA 2.0)	This study
pMTL007C-E2-CD0242	Clostron plasmid retargeted to CD0242 at 156/157s (DNA 2.0)	This study
pMTL007C-E2-CD0243	Clostron plasmid retargeted to CD0243 at 309/310a (DNA 2.0)	This study
pMTL007C-E2-CD0244	Clostron plasmid retargeted to CD0244 at 556/557a (DNA 2.0)	This study
pMTLAFP <i>fliC</i>	pMTL82151 with + /– 630 <i>fliC</i> 1200 bp	Faulds-Pain and Wren (2013)

order to characterize the role of the remaining type A modification genes, the flagellin modifications of the CD0241, CD0242, CD0243 and CD0244 mutants were examined by Mass Spectrometry. Flagellin was isolated from wild type and mutant strains by shearing or glycine extraction and proteins were separated by SDS-PAGE. Gel bands corresponding to flagellin were excised, digested with trypsin and analysed by nLC-MS/MS. The corresponding MS/MS spectra were sequenced *de novo*, and the identified glycopeptides are listed in Table 3. Tandem mass spectrometry analyses of flagellin tryptic digests from the CD0241 mutant showed glycopeptides to be modified with a single HexNAc moiety. No peptides from the CD0241 mutant harboured the wild-type 398 Da glycan. Flagellin isolated from the CD0242 mutant also only harboured glycopeptides modified with a single HexNAc moiety. In contrast, flagellin isolated from the CD0243 mutant showed variable glycan modifications. A number of glycopeptides were modified with a single HexNAc moiety (Fig. 4A), and a number of peptides modified with a 384 Da glycan (Fig. 4B). The MS/MS spectrum of this structure showed typical peptide fragmentation and a glycan

oxonium ion at m/z 385. Glycan-related fragment ions were also observed at m/z 284, 186 and 168, identical to the fragmentation pattern of the wild-type sugar (Twine *et al.*, 2009). In the high m/z region of the MS/MS spectrum, neutral losses of 98 and 203 were observed, suggesting the 384 Da sugar is closely related to the wild type 398 Da sugar. The sugar structures appear to differ by 14 mass units, which indicates absence of the methyl group in the sugar of the CD0243 mutant strain. *De novo* sequencing of MS/MS spectra of flagellin from the CD0244 mutant showed a mixture of glycopeptides, modified with either a single HexNAc moiety, or the 398 Da wild-type sugar.

In trans complementation of CD0241, CD0242 or CD0244 mutants either partially or fully restored modification of flagellin with the 398 Da wild type sugar (Table 3). For example, flagellin isolated from the complemented CD0241 mutant, showed glycopeptides modified with either HexNAc or the wild-type sugar. Flagellin isolated from the CD0242 complement harboured peptides modified with a 203 Da sugar, 384 Da sugar or the 398 Da wild-type sugar. Complementation of the CD0244 mutant appeared to fully restore wild type glycosylation.

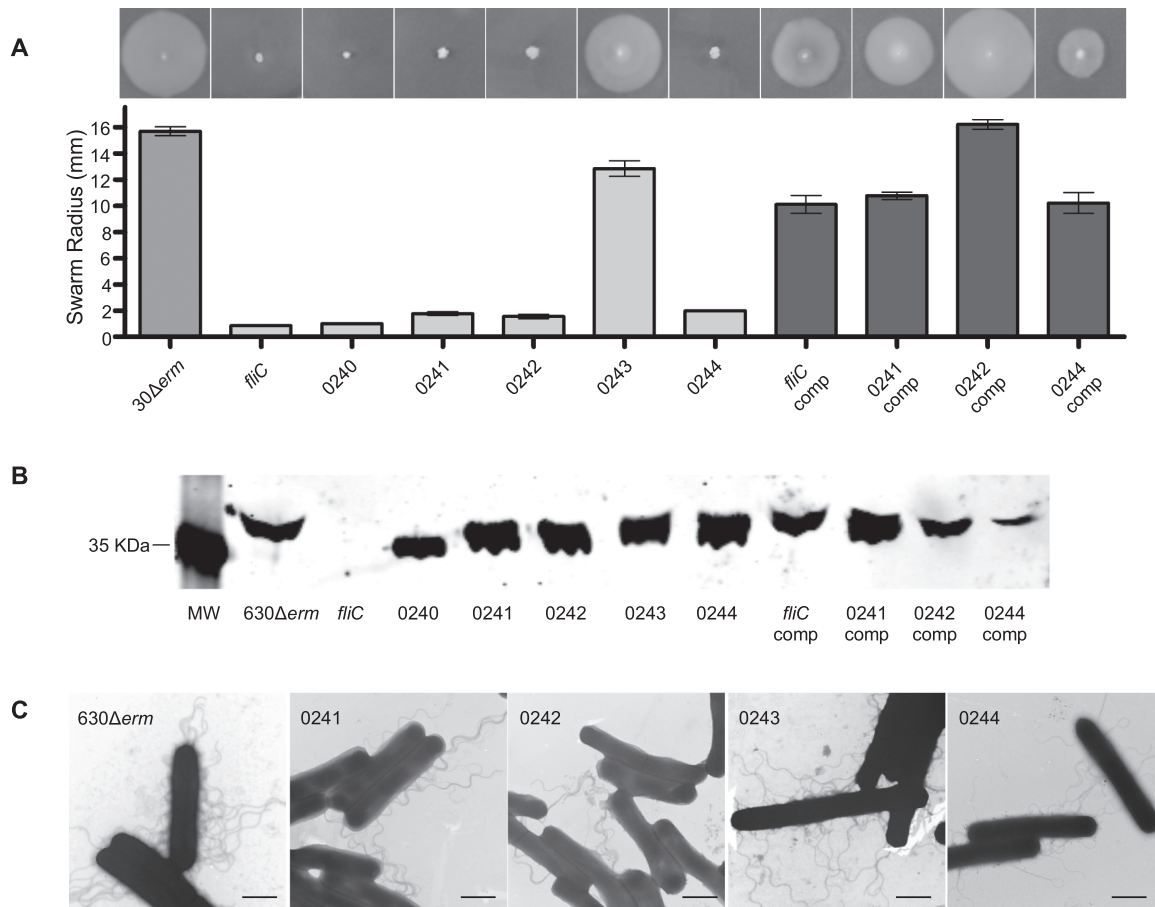


Fig. 3. Motility and flagella production in 630 putative modification mutants.

A. Motility assays of the 630Δerm parental strain compared to the *fliC* Clostron mutant and the mutations in the predicted modification genes were carried out in CDMM containing 0.3% Difco-bacto agar. The *fliC* mutant and the initial GT mutant were non-motile, as described previously, as were mutations in the ORFs CD0241, CD0242 and CD0244. These were all restored to motility by complementation. **B.** Flagellin from 630Δerm and the modification mutants were probed with an anti-FliC antibody by Western blot (MW = molecular weight, gene names and numbers below indicate mutation, comp = *in trans* complementation of mutant). All strains with the exception of the *fliC* mutant were found to produce flagellin, although the mass of the protein varied. **C.** The parental strain 630Δerm and the mutants of CD0241, CD0242, CD0243 and CD0244 were observed by TEM, the black scale bar in each image represents a length of 1 μm. All of the mutants appeared to have flagella associated with the surface of the cells.

Surface layer extracts of 630Δerm and the modification mutants were analysed by Western blot with an anti-β-O-GlcNAc antibody and confirmed the NMR structure that the initial sugar is a GlcNAc (Fig. 4C). Interestingly, there was no interaction of this antibody with the 630Δerm flagellin but it did bind to the flagellins of the CD0241, CD0242, CD0243 and CD0244 mutants, suggesting that the further modifications block the epitope for antibody binding to the GlcNAc residue in the parental strain glycan. As predicted no binding of the antibody to the flagellin of the CD0240 mutant, which cannot transfer glycan to the flagellin, was observed.

Alterations in the flagella PTM causes cell aggregation

When grown in liquid culture we observed that the CD0240, CD0241, CD0242 and CD0244 mutants all

settle out of the suspension and formed sediment at the bottom of the growth vessel, while cultures of the parental strain 630Δerm and the CD0243 mutant remained in suspension (Fig. 5A). This phenotype was restored upon complementation *in trans* (Fig. 5A). As all mutants that formed sediment were also non-motile it was hypothesized that these two phenotypes could be related and that loss of motility led to sedimentation. However, when the non-motile aflagellate *fliC* mutant was grown in liquid it behaved as the motile parental strain and remained in suspension, suggesting that loss of motility alone cannot account for sedimentation of the modification mutants (Fig. 5A).

In order to quantify this phenotype an assay was developed which allowed us to determine whether the cells settled out during growth or at stationary phase and whether the growth rate was affected by this phenotype.

Table 3. Summary of glycan modifications of *C. difficile* 630 flagellin glycosylation mutants.

Strain/plasmid	Detected glycopeptides (precursor m/z)	Glycan masses and predicted composition (Da)
630 Δ <i>erm</i>	Various peptides	398
CD0241 mutant	LLDGTSSSTIR (633.3 ²⁺)	203
	TMVSSLDAALK (669.8 ²⁺)	203
CD0241 mutant	AGGTTGTDAAK (577.3 ²⁺)	203
p0241_comp	TMVSSLDAALK (697.4 ²⁺)	203
	TMVSSLDAALK (775.3 ²⁺)	398 (203-80-115)
	LLDGTSSSTIR (633.3 ²⁺)	203
	LLDGTSSSTIR (730.8 ²⁺)	398(203-80-115)
CD0242 mutant	TMVSSLDAALK+ox (677.8 ²⁺)	203
CD0242 mutant	TMVSSLDAALK (679.3 ²⁺)	203
p0242_comp		384(203-80-101)
		398(203-80-115)
CD0243 mutant	LLDGTSSSTIR (633.3 ²⁺)	203
	LLDGTSSSTIR (732.8 ²⁺)	384(203-80-101)
	TMVSSLDAALK (679.3 ²⁺)	203
	TMVSSLDAALK (724.2 ²⁺)	384(203-80-101)
CD0244 mutant	TMVSSLDAALK (679.3 ²⁺)	203
	TMVSSLDAALK (775.5 ²⁺)	398(203-80-115)
	LLDGTSSSTIR (730.8 ²⁺)	398(203-80-115)
CD0244 mutant	LLDGTSSSTIR (730.8 ²⁺)	398(203-80-115)
p0244_comp	TMVSSLDAALK (775.5 ²⁺)	398(203-80-115)

For this we measured both the optical density (OD) of a well mixed culture (referred to here as a mixed culture) in order to assess the overall growth rate of the strains and the OD₆₀₀ from the top 1 ml of an undisturbed culture (referred to here as an unmixed culture), which when compared to the OD₆₀₀ of the mixed culture would indicate whether the cells were coming out of suspension. As the process of measuring these OD_{600S} involves mixing and altering the overall volume of the cultures, it meant that two separate cultures were required for the mixed and unmixed measurements and that new cultures would be required for each time point tested to avoid distorting the results.

Throughout exponential growth of the parental strain 630 Δ *erm* the mixed and unmixed cultures had very similar OD_{600S} to one another, indicating that during growth of this strain little sedimentation occurs (Fig. 5B). At 24 h however the OD_{600S} of the unmixed cultures were lower than the mixed (OD₆₀₀ of approximately 0.8 and 1.2 respectively), suggesting that at stationary phase cells begin to sediment out of solution (Fig. 5B). No difference was observed in the overall growth of the *fliC* mutant compared to 630 Δ *erm*. In the unmixed culture of the *fliC* mutant the OD₆₀₀ increases between 3 and 7.5 h, however these OD_{600S} are lower than those of both the *fliC* mixed cultures and the 630 Δ *erm* unmixed cultures, indicating that some sedimentation occurs in this strain during growth (Fig. 5B). By 24 h the OD₆₀₀ of the unmixed culture fell to an OD₆₀₀ of approximately 0.2, while the mixed culture was around 1.0, this difference in OD₆₀₀ at this time point is much greater than was observed in 630 Δ *erm*.

In the modification gene mutants CD0241, CD0242 and CD0244, overall growth was not significantly different to 630 Δ *erm* or the *fliC* mutant, however the sedimentation phenotype was much more pronounced and no increase in OD₆₀₀ was observed in the unmixed culture beyond an OD₆₀₀ of approximately 0.2 throughout the exponential growth phase (Fig. 5C). In line with other phenotypic observations, the knock-out mutant of CD0243, which encodes the putative methyltransferase, did not display a phenotype which was significantly different to the parental strain (Fig. 5A and C).

While it appears that the loss of the flagellin results in some sedimentation, mutations in the modification genes cause a more extreme phenotype which is continuous throughout growth. We therefore hypothesized that this phenotype is due to the presence of a flagella filament lacking the full repertoire of modifications. To address this hypothesis we took advantage of the recent progress in genetic tools for *C. difficile* (Faulds-Pain and Wren, 2013) and generated in-frame deletions of the *fliC* gene by allele exchange in the CD0241, CD0242 and CD0244 clostron mutant genetic backgrounds. Destructive growth curves were carried out as before and from the OD₆₀₀ of the unmixed cultures it was found that sedimentation did occur during the growth of all three double mutants (Fig. 5D), however, unlike the single modification gene mutants, which remained at an OD₆₀₀ of approximately 0.2 in the unmixed cultures, the double mutants did increase during growth phase, peaking at OD₆₀₀ of between 0.8 and 1.2 at 7.5 h and had a comparable profile to the *fliC* single mutant (Fig. 5B). This supports the hypothesis that the sedimen-

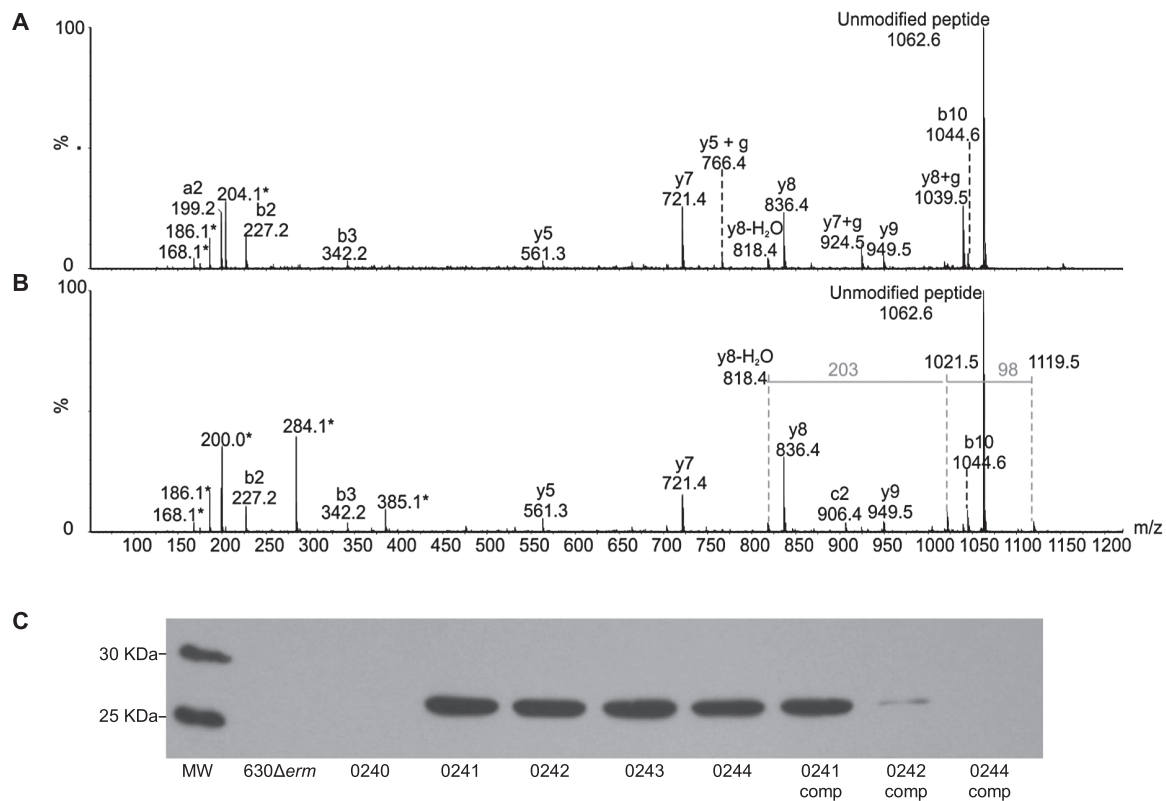


Fig. 4. Mass spectrometry analyses of *C. difficile* flagellin tryptic glycopeptides from strain 630 Δ erm CD0243 mutant. Peptide MS/MS spectra were obtained from in gel digestion of protein bands from glycine extraction of whole cells.

A. MS/MS spectrum of *C. difficile* flagellin glycopeptide LLDGTSSTIR. The unmodified peptide ion was observed at m/z 1062, with low intensity peptide type y and b ions confirming the peptide sequence. A moderately intense HexNAc oxonium ion was observed at m/z 204, with sequential dehydration giving rise to glycan related ions at m/z 186 and 168. Glycan related fragment ions are indicated with an asterisk. B. MS/MS spectrum of *C. difficile* flagellin glycopeptide LLDGTSSTIR, modified with a glycan of 384 Da. The MS/MS spectrum shows the typical peptide fragment ions and an additional, with a glycan oxonium ion at m/z 385. Glycan related ions were also observed at m/z 284, 186 and 168. In addition, in the higher m/z region of the spectrum neutral losses of 98 and 203 Da were observed. Together these data suggest the 384 Da glycan moiety is similar to the 398 Da wild type sugar, with the absence of a methyl group. C. Flagellin from 630 Δ erm and the modification mutants were analysed by Western blot, probing with an anti- β -O-GlcNAc antibody (MW = molecular weight, gene numbers below indicate mutation, comp = *in trans* complementation of mutant). With the exception of the CD0240 mutant, the flagellin of all mutants was found react with the anti- β -O-GlcNAc antibody, however the parental strain 630 Δ erm and the CD0244 complement did not.

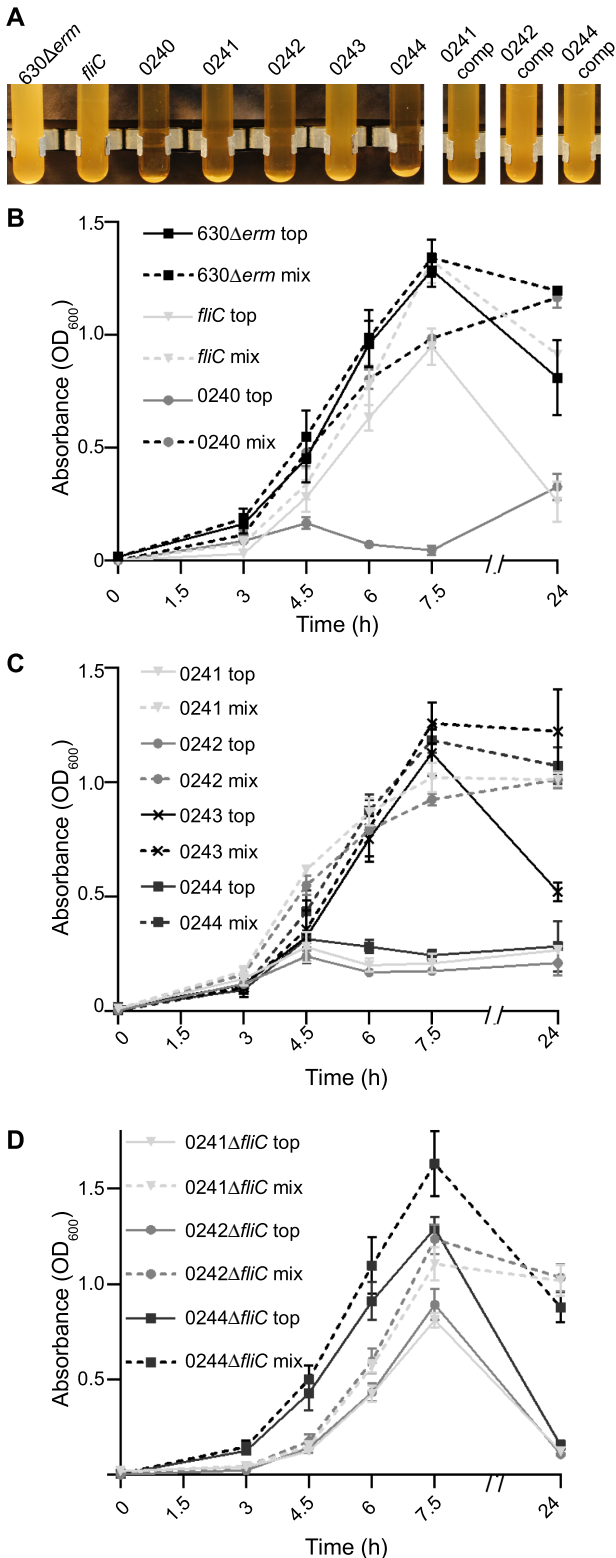
tation which occurs in these modification mutants is chiefly a consequence of an incompletely modified flagella filament.

To determine whether these cells are interacting with one another or with components of the growth medium, the mutants were tested for autoagglutination. Cells were first grown on solid BHIS agar then transferred to PBS, all strains were then normalized by absorbance to a starting OD_{600} of 10, as described previously (Howard *et al.*, 2009; Reynolds *et al.*, 2011). Following incubation overnight, sedimentation was observed in the CD0240, CD0241, CD0242 and CD0244 mutants (Fig. 6A). The results were quantified by calculating the difference between the absorbance of the top 1 ml of the solution and the absorbance of the whole volume, autoagglutination was calculated as the percentage of cells that had sedimented (Fig. 6B). This was found to be between 10 and 20% in the

parental strain, the *fliC* mutant and the CD0243 mutant but 86% in the CD0240 mutant and between 65% and 72% in the CD0241, CD0242 and CD0244 mutants.

Alterations in the flagella PTMs leads to increased cell binding to abiotic surfaces

The autoagglutination observed in the CD0240, CD0241, CD0242 and CD0244 PTM mutants indicated that these cells had a 'stickiness' that caused them to group together and as a consequence settle out of solution. To determine whether this also made them more adherent to abiotic surfaces, *C. difficile* strains were grown in 24-well plates for 5 days and the comparative number of cells adhered to the surface of these plates were quantified by crystal violet staining (Fig. 6C; Dawson *et al.*, 2012). All of the PTM mutations lead to an increased interaction with the surface



of the plates; interestingly however this phenotype among the modification mutants was the least pronounced in the CD0240 mutant which had the strongest auto-aggregation phenotype. In contrast the CD0243 mutant, for which we

Fig. 5. Sedimentation of the modification mutants.

A. Mutations in the modification genes led cells to sediment in liquid culture with the exception of CD0243, this phenotype was restored by complementation *in trans*. B and C. This was quantified during growth by measuring the OD₆₀₀ of the top 1 ml of culture (top – continuous lines) and a well mixed culture (mix – broken lines), demonstrating sedimentation in the CD0240, CD0241, CD0242 and CD0244 mutants, confirming the observations in A. D. The sedimentation in double mutants of CD0241 and *fliC*, CD0242 and *fliC* and CD0244 and *fliC* were also quantified. These double mutants had a growth profile similar to the *fliC* clostron mutant (B).

previously observed no phenotypes, adhered to the abiotic surfaces as well as the CD0241, CD0242 and CD0244 mutants.

The role of PTM in the epidemic ribotype 017 strains

The configuration of the 630 type A modification locus was also identified in ribotype 017 strains, a distinct *C. difficile* lineage, members of which have caused a number of epidemics across Europe and Asia, but are toxin A negative (Drudy *et al.*, 2007). To determine whether the properties associated with the PTM mutants in 630Δerm could be extrapolated to the orthologues in the ribotype 017 strains, mutants were made in the strain M68Δerm, an erythromycin-sensitive derivative of the ribotype 017 strain M68 isolated from an outbreak in Dublin (Drudy *et al.*, 2007; Faulds-Pain and Wren, 2013). An in-frame deletion of the chromosomal *ermB* gene of M68, which we had previously constructed, makes this strain sensitive to macrolide, lincosamide, streptogramin (MLS) antibiotics which are typically required for mutagenesis by Clostron insertion (Faulds-Pain and Wren, 2013). The two genes M68-0242 and M68-0243 (orthologues of CD0242 and CD0243 respectively) were selected for mutagenesis as the former had a strong phenotype in 630Δerm and the latter a subtle phenotype. Motility of these mutants was assayed and compared to 630Δerm and M68Δerm and a *fliC* deletion mutant of M68, described previously (Faulds-Pain and Wren, 2013). As in the 630Δerm background, the M68-0242 mutant caused a complete loss of motility which was restored on complementation, while the M68-0243 mutant was slightly less motile than the parental strain (Fig. 7A and B).

Flagellin modification is essential for efficient colonization and recurrence in the murine model of infection

In a murine model, *C. difficile* can cause a self-limiting, chronic intestinal infection by which colonization and relapse can be studied (Chen *et al.*, 2008; Lawley *et al.*, 2009). We used this model to assess the role of the

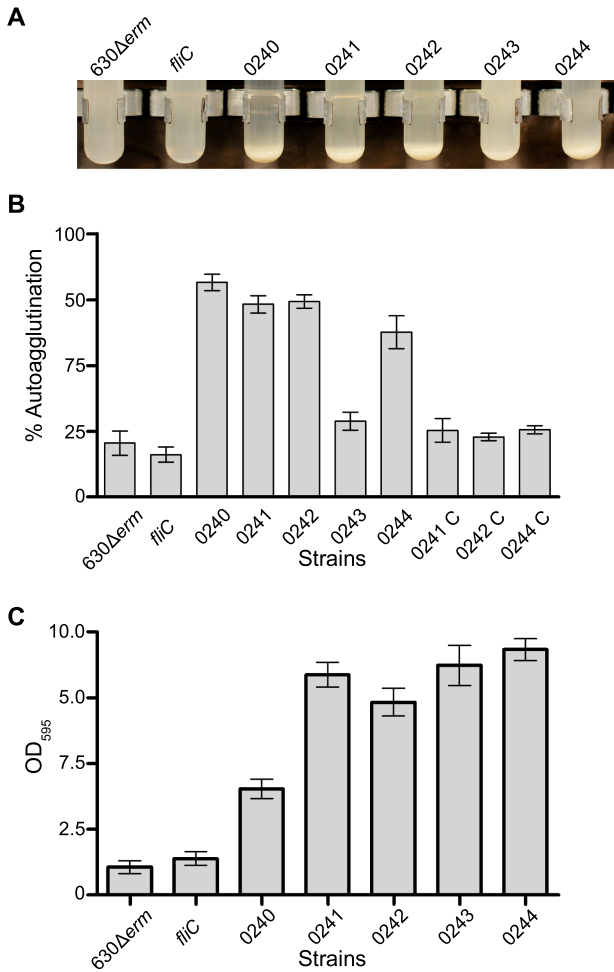


Fig. 6. Agglutination of cells to one another and abiotic surfaces. A and B. The autoagglutination of the modification mutants was measured in the absence of media by growing them on solid media and transferring them to PBS. The total autoagglutination was calculated as the OD₆₀₀ of the top 1 ml of cell solution compared to the total OD₆₀₀ following 16 h incubation. Autoagglutination was found to be the highest in CD0240, CD0241, CD0242 and CD0244 mutants and could be restored on complementation, the *fliC* and CD0243 mutant were similar to the parental strain. C. The agglutination phenotype of the mutants was also investigated in their interaction with abiotic surfaces, strains were grown in 24-well plates for 5 days and the relative amount of cells bound was measured with crystal violet stain. All of the modification mutants showed a marked increase in binding to the surface of the wells compared to 630Δerm and the *fliC* mutant.

flagellin modifications in the establishment and recurrence of *C. difficile* infection. In order to clear the natural intestinal microflora and allow *C. difficile* to establish an infection, clindamycin was administered to 8 week-old C57BL/6 mice 5 days prior to challenge with *C. difficile* spores derived from either 630Δerm or the isogenic *fliC*, CD0241 or CD0243 mutants. Shedding of *C. difficile* in the faeces was used as an indirect measure of host colonization and was determined by plating emulsified faecal pellets and enumerating the colony forming units (cfu) per

gram of faeces. In this model, colonization is transient and detection of bacteria in the faeces is difficult 14 days post infection. However, as low numbers persist, a second dose of clindamycin administered approximately 28 days post infection stimulates outgrowth and shedding, indicating relapse of infection, can be monitored.

Mice challenged with the parental strain 630Δerm shed the bacteria at high levels from day 1 until day 4 post challenge (approximately 5×10^6 cfu g⁻¹ faeces), by day 7 the *C. difficile* load in the faeces had begun to fall ($c. 1 \times 10^4$ cfu g⁻¹ faeces) and by day 14 the load of *C. difficile* in the faeces was below the limit of detection (Fig. 8A). Recurrence of *C. difficile* shedding occurred 3 days after the administration of a second dose of clindamycin (experiment day 31). Shedding peaked after 4 days (day 32) (approximately 4.6×10^7 cfu g⁻¹ faeces) and remained high at 7 days (day 35), after 14 days (day 42) levels had dropped almost to the level of detection of the experiment.

In these experiments mice challenged with the *fliC* mutant both the initial infection and the relapse of infection had a similar profile to the parental strain (Fig. 8A). The most significant difference between these two strains was that following the second dose of clindamycin *C. difficile* shedding in the faeces recurred after 1 day in the mutant (approximately 3×10^3 cfu g⁻¹ faeces) compared to 3 days in the parental strain. After 4 days (experiment day 32) shedding of the *fliC* mutant peaked (approximately

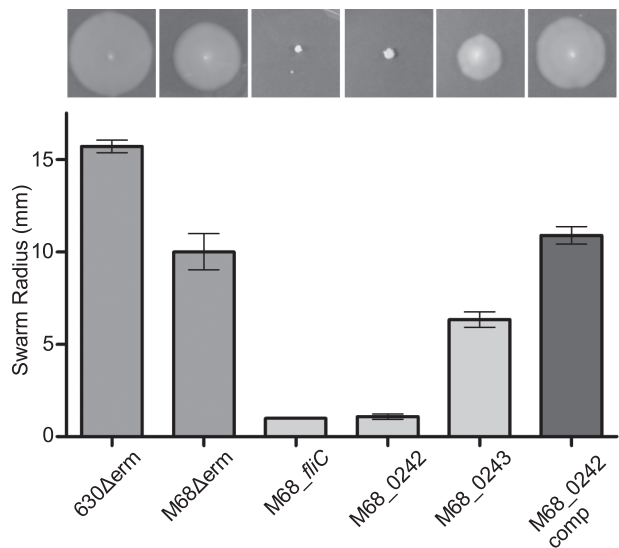


Fig. 7. Motility in M68 putative modification mutants. Motility assays of both the 630Δerm and M68Δerm parental strains compared to the M68Δ*fliC* in-frame deletion mutant and the mutations in the predicted modification genes M68_CD0242 and M68_CD0243 were carried out in CDMM containing 0.3% Difco-bacto agar. M68Δerm was motile and the M68_fliC mutant non-motile, as described previously. A mutant of the M68_0242 gene was non-motile, this was restored upon complementation. The M68_0243 mutant was motile, with a slightly reduced motility compared to the parent.

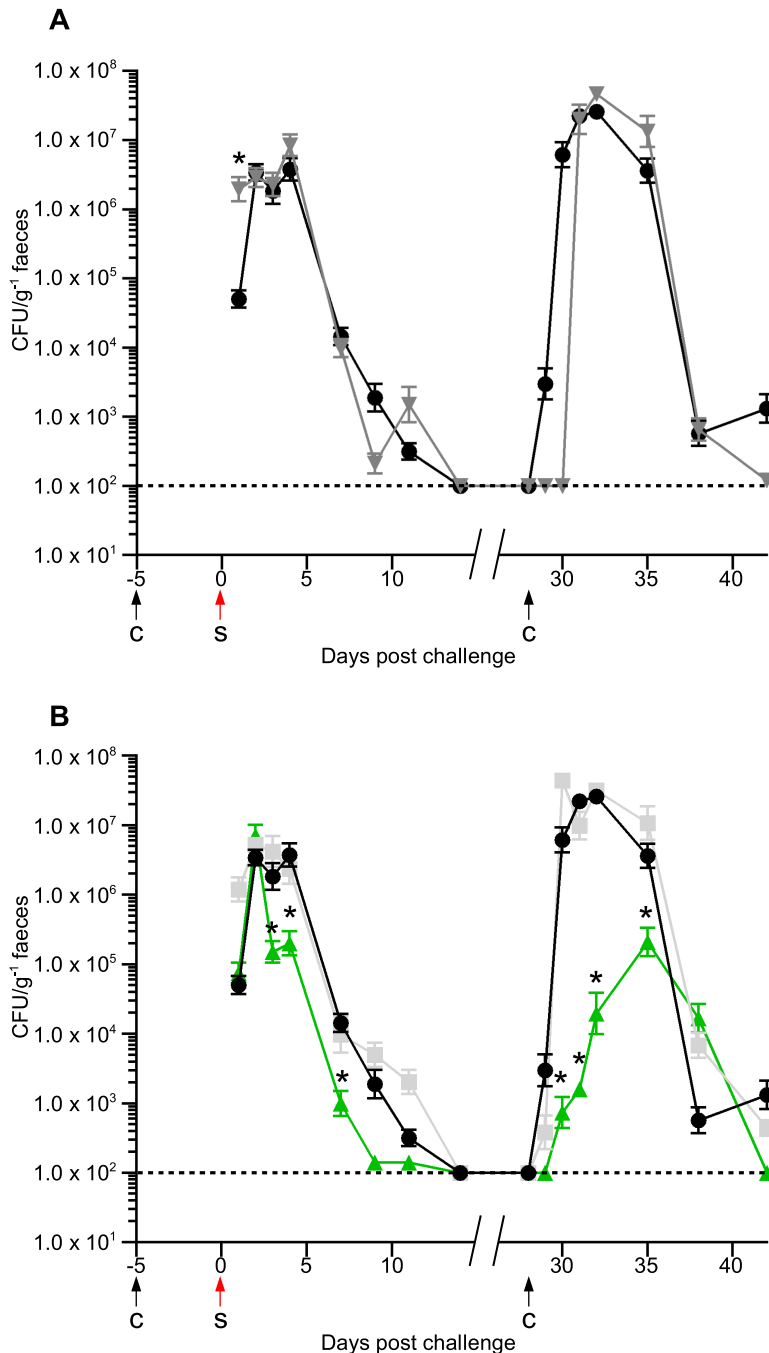


Fig. 8. Flagellin modification is essential in the colonization and recurrence of *C. difficile* infection in C57BL/6 mice. Mice were challenged with *C. difficile* spores (S) 5 days following administration of clindamycin (C). Levels of *C. difficile* were measured by plating faecal samples and determining the *C. difficile* cfu g⁻¹.

A. Mice were challenged with the parental strain 630Δ*erm* (inverted grey triangles) and the non-motile *fliC* Clostron mutant (black circles). Initial colonization is similar in these strains but relapse is delayed in 630Δ*erm* by 2 days following the second dose of clindamycin.

B. The initial colonization and relapse of the *fliC* mutant (black circles) were compared to the CD0241 and CD0243 modification mutants (green triangles and light grey squares respectively). While CD0243 has a similar initial colonization and recurrence rate to the *fliC* mutant, the CD0241 mutant is defective in both initial colonization and recurrence. Asterisks indicate a significant difference compared to the *fliC* mutant.

2.6×10^7 cfu g⁻¹ faeces) and remained high at 7 days (day 35), as was observed in the parental strain. At 14 days (day 42) *C. difficile* was still detectable in the faeces but in low numbers (approximately 1.2×10^3 cfu g⁻¹ faeces). The shedding profile of mice challenged with the CD0243 mutant was not significantly different to strain the *fliC* mutant at any point post challenge or post second clindamycin treatment (Fig. 8B). The delay in re-colonization following the second dose of clindamycin observed in the parental strain did not occur in any of the mutants tested.

As the Clostron mutants are marked with an *ermB* gene, which confers resistance to clindamycin [minimum inhibitory concentration (MIC) *fliC* = 16 μg ml⁻¹, CD0241 = 8 μg ml⁻¹ and CD0243 = 4 μg ml⁻¹], while the parental strain, 630Δ*erm* is sensitive to this class of antibiotics (MIC = 0.25 μg ml⁻¹), it is likely that the clindamycin in the mice inhibits the recurrence of 630Δ*erm* but not the mutants until the residual antibiotic is cleared.

Mice infected with spores of the CD0241 mutant reached a similar level of shedding as the parental strain

by day 2 post challenge; however, while the parental strain and the *fliC* and CD0243 mutants continued to shed at high levels until day 4, shedding of the CD0241 mutant fell on day 3 and remained significantly lower than the *fliC* mutant at day 4 ($P = 0.04$; Fig. 8B). This trend continued at day 7 and at both days 9 and 11 the number of *C. difficile* cfu in the faeces was almost at the limit of detection. Following the second dose of clindamycin, recurrence of infection by the CD0241 mutant did occur, however the shedding of this mutant in the faeces was significantly less than the *fliC* mutant at all time points tested up to 10 days later (day 38) ($P = 0.0011$).

Weight change was monitored in the mice as another marker of infection. The animals were weighed before challenge and at 2 days post challenge with all four strains. Those infected with 630 Δ *erm*, the *fliC* mutant and the CD0243 mutant all lost weight in this time (between 2.3% and 6.3% of total body weight) compared to those challenged with the CD0241 mutant (gained 5% body weight). The difference in the change of weight in animals challenged with this strain was significantly different than 630 Δ *erm* ($P = 0.002$), the *fliC* mutant ($P = 0.008$) and the CD0243 ($P = 0.01$) mutant. It was also observed that the mice challenged with either 630 Δ *erm*, the *fliC* mutant and the CD0243 mutant produced sticky faeces in their cages, a sign of significant infection, this was not observed in those animals challenged with the CD0241 mutant.

In this experiment colonization of C57BL/6 mice and disease recurrence does not appear to be reliant on bacterial motility or the presence of the flagellin in *C. difficile* strain 630 Δ *erm*; however, disruption of the flagellin modification leads to attenuation in both colonization and relapse.

Discussion

Treatment of *C. difficile* disease is extremely difficult and relapse rates are high. Much work has been dedicated to the study of *C. difficile* toxins as they are important in disease and to sporulation and the spread of infection. However, little is known about the organisms' ability to interact with and colonize the intestinal epithelia of the host, a trait which may be vital in disease recurrence. In this study, we defined the structure of the type A flagellin post-translational modification by NMR and found that the resultant change altered the extent of colonization and outgrowth in the murine relapse model of infection.

Of the known flagellin modification structures only some *P. aeruginosa* strains produce a structure composed of a sugar plus a phosphate and a methylated amino acid, similar to the *C. difficile* type A flagellin modification (Verma *et al.*, 2006). Interestingly, as with *C. difficile*, the *P. aeruginosa* flagellins are also subject to strain-specific variation of the PTMs, some being modified as the *C. difficile* type A

strain such as strain PA01 and others, such as the strain PAK being modified with a larger glycan composed of a number of monosaccharide moieties (Verma *et al.*, 2006). The precise role of this modification in *P. aeruginosa* has not been determined; however, flagella are known to be essential in the establishment of acute infections by *P. aeruginosa* (Cobb *et al.*, 2004). The *C. difficile* type A flagellin modification was previously studied by LC-MS/MS and the initial structure was assigned as a HexNAc sugar with a methylated aspartic acid attached via a phosphate bond (Twine *et al.*, 2009). On further analysis however it was realized that this amino acid was mis-identified as an aspartic acid, the mass of the moiety attached to the phosphate group being 115 Da is too small for an aspartic acid plus a methyl group. In this study, to definitively determine the structure of this modification a large-scale extraction of *C. difficile* 630 flagellin was completed. The flagellin protein was extensively digested with proteinase K and following purification the glycan structure was solved by NMR. The structural configuration of the HexNAc linking sugar was confirmed to be β -O linked GlcNAc and the remaining modification was linked via phosphate bond and determined to be an *N*-methylthreonine residue in the L-configuration.

Oligosaccharide flagellin modifications are commonly formed of a series of sugars, predominantly pseudaminic acid or its derivative legionaminic acid (Asakura *et al.*, 2010; Parker *et al.*, 2012; Sun *et al.*, 2013). Specialist enzymes are required for the biosynthesis of these sugars as they are not synthesized by the cell for any other purpose (Parker *et al.*, 2012; Sun *et al.*, 2013). This is not the case for the *C. difficile* type A flagellin modification, as GlcNAc sugars are common precursors for many biosynthetic pathways, therefore no specialized biosynthesis genes are required. This is reflected in its modification genes (Fig. 1), which are predicted to be involved in the transfer of the modifications rather than the synthesis of precursors.

By generating mutations of the *C. difficile* type A modification genes and studying the resulting structures on the flagella filaments by LC-MS/MS, we were able to define more specifically the role each gene plays in the resulting modification. Flagellins of the CD0241 and CD0242 mutants are modified with the GlcNAc sugar only and both lack the phosphate group and the *N*-methylthreonine residue (Fig. 2). This indicates that the addition of the phosphate and the threonine to the GlcNAc is not sequential, but rather that they are added to the structure together. These genes encode proteins which have similarity with phosphoserine phosphatases and phosphocholine cytidylyltransferases respectively. Phosphoserine phosphatases catalyse the reversible reaction of serine and phosphate to phosphoserine and H₂O, and it seems likely that CD0241 could encode a kinase which catalyses the addition of

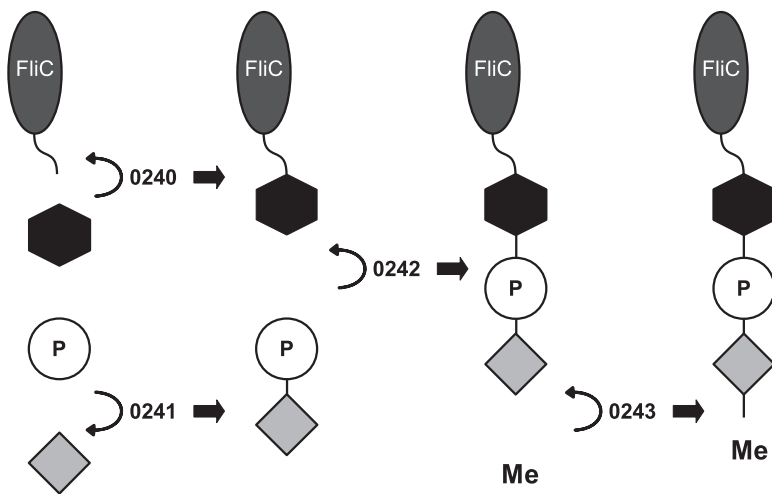


Fig. 9. Schematic diagram illustrates the structure of the type A modification and the predicted contribution of the enzymes to the synthesis of the glycan. The FliC protein is modified at seven serine and threonine residues (grey oval represents a FliC monomer with the curved line representing either a serine or threonine amino acid within the FliC protein). To these residues a GlcNAc (black hexagon) is transferred by the GT encoded by CD0240. A phosphate group (white circle) is attached to a threonine (light grey diamond) by the enzyme encoded by CD0241 and this phosphorylated threonine is attached to the FliC-GlcNAc by the enzyme encoded by CD0242. The methyltransferase encoded by CD0243 adds a methyl group to the threonine.

phosphate to threonine (Fig. 9). This is supported by a DXDX(T/V) motif encoded at the N-terminus of CD0241, this domain functions as an intermediate phosphoryl acceptor, indicative of a phosphatase (Osman *et al.*, 2010). Phosphocholine cytidyltransferases catalyse the reversible reactions of CTP plus choline phosphate to CDP-choline and diphosphate. As there is no evidence of phosphocholine in the flagellin modification, we hypothesize that the enzyme encoded by CD0242 catalyses the addition of the phosphothreonine to the GlcNAc residue (Fig. 9).

LC-MS/MS of the putative methyltransferase knockout (CD0243) identified a mixed population of glycan structures on flagellar peptides; either the GlcNAc residue alone or the extended structure where the threonine was no longer methylated. The former population indicates that the function of this enzyme is to transfer a methyl group to the threonine. This is represented as the final step in the formation of the glycan in Fig. 9, however from our data we cannot discern at what stage methylation occurs, whether it is when the threonine is in complex with the glycan, when it phosphorylated or when it is free threonine. The presence of some residues which are modified with GlcNAc alone is less easy to interpret; but it may indicate that when the methyl group is absent the modification is less stable. It is also unclear from our data what the function of the fourth gene in the locus, CD0244, might be. The LC-MS/MS analysis identifies a mixed population of both the wild-type structure and the GlcNAc alone; however the phenotypic characteristics of this mutant are the same as the CD0241 and CD0242 mutants. This predicted protein has some similarity with glycerophosphotransferase enzymes; consequently, we would predict that it is involved in the transfer of the phosphate group to either the threonine or the GlcNAc. This mixed population may indicate that this enzyme is partially redundant. Interestingly, the similar flagellin PTM cluster in *P. aeruginosa* PA01 strains con-

tains only orthologues of CD0241, CD0242 and CD0243, with CD0244 absent, supporting this redundancy hypothesis. This protein may however have a function not identified in this current study.

Previously, the CD0240 mutant, predicted to encode the initial glycosyltransferase enzyme, was characterized and found to be non-motile (Twine *et al.*, 2009). Unusually for strains with a mutation that prevents flagellin modification, this knock-out was still able to both secrete flagellin and form a filament. In this study we found that the CD0241, CD0242 and CD0244 mutants likewise produce flagella and are non-motile, but the mutant of CD0243 retained motility similar to the parental strain. Loss of motility in flagellin PTM mutants in most organisms can be explained by the absence of a flagella filament, this is not the case for the *C. difficile* PTM mutants suggesting that other properties of these unmodified or partially modified filaments are interfering with motility. We noted another property of these mutants was their tendency to aggregate to each other and to surfaces and consequently to sediment when grown in broth. This phenotype was independent of motility and was dependent on the presence of an unmodified or incompletely modified flagella filament. One possible explanation is that an alteration in the flagellin modifications affects the polarity of the cell surface, causing the aggregation of the cells which prevents them from swimming efficiently. An alternative hypothesis is that the alteration in the charge on the flagellins is causing deleterious changes in the regularity of filament pitch height and length and consequently affecting the organisms' ability to swim efficiently.

The type A modification gene locus identified in 630 has also been identified in the RT017 epidemic lineage of *C. difficile*. We found that the phenotypes associated with the type A modification mutants in 630 Δ erm were also associated with mutants of their orthologues in the RT017 strain M68 Δ erm.

Little is known about the advantages flagellin PTMs provide a bacterium, although they have been implicated in host colonization and virulence in a number of organisms (Balonova *et al.*, 2012; Iwashkiw *et al.*, 2012; Lithgow *et al.*, 2014). Flagellin is a hugely abundant protein, prominently displayed on the surface of the cell and PTMs are localized to its externally exposed domains, indicating that their function may lie in the interaction with the environment. C57BL/6 mice have been shown to be a useful model for the study of *C. difficile* colonization and recurrence as they do not succumb to the overwhelming effects of the toxins during infection (Chen *et al.*, 2008; Lawley *et al.*, 2009). To investigate the role of flagellin, motility and PTMs in the infection and relapse, these mice were challenged with the parent strain, 630 Δ *erm*, and the *fliC*, CD0241 and CD0243 mutants. We found that the non-motile *fliC* mutant and the motile CD0243 mutant had the same profile of faecal *C. difficile* loads as 630 Δ *erm* during both the initial infection and relapse, although the relapse of clindamycin sensitive 630 Δ *erm* was delayed by 2 days compared to the mutants. The Clostron mutagenesis method used to generate our mutants requires an MLS antibiotic sensitive parent strain, in this case 630 Δ *erm*, and results in mutants marked with an *ermB* gene which confers MLS antibiotic resistance. As clindamycin is a MLS antibiotic and in this experiment it is used to trigger relapse, it is likely that the delay in 630 Δ *erm* recurrence is due to its sensitivity to clindamycin and the ability of the mutants to immediately re-grow is due to their resistance. During the initial infection the non-motile CD0241 mutant reached the same peak of bacterial load in the faeces as the other three strains however, this decreased much sooner and relapse of infection was slower, peaked later and reached a lower bacterial load in the faeces. These mice also avoided other symptoms of severe infection such as weight loss and sticky faeces.

We observed that neither flagella nor motility appear to be required for the efficient colonization of *C. difficile* in the mouse intestine, as had been described previously (Baban *et al.*, 2013). The complete modification of the flagellin however does appear to be important in colonization and relapse. It is not known whether the CD0241 mutant aggregates *in vivo* as it does *in vitro* but it is possible that this phenotype is affecting the fitness of the bacteria or the hosts' ability to clear it from the intestine. Potentially the alteration in the modification structure could affect the interaction of this highly abundant protein with the hosts' immune system.

Experimental procedures

Bacterial strains and growth conditions

Escherichia coli Top10 (Invitrogen) and *E. coli* CA434 were grown at 37°C in Luria–Bertani (LB) growth media supple-

mented with chloramphenicol (12.5 μ g ml⁻¹) and CA434 with Kanamycin (50 μ g ml⁻¹) where appropriate. *C. difficile* was cultured at 37°C in an anaerobic work station (Don Whitley, Yorkshire, UK) and grown routinely in BHIS medium (Brain heart infusion medium supplemented with 5 mg ml⁻¹ yeast extract and 0.1% w/v L-cysteine). *C. difficile* was activated from glycerol stocks on Braziers agar [CCEY (Bioconnections), 4% w/v egg yolk and 1% w/v defibrinated horse blood]. *C. difficile* was supplemented with D-cycloserine (250 μ g ml⁻¹), cefoxitin (8 μ g ml⁻¹), thiamphenicol (15 μ g ml⁻¹) and erythromycin (10 μ g ml⁻¹) where appropriate. Plasmids were transferred to *C. difficile* by conjugation from *E. coli* CA434 as described previously (Heap *et al.*, 2007; Cartman and Minton, 2010).

C. difficile minimal media (CDMM) (Cartman and Minton, 2010) containing 0.3% bacto-agar (DIFCO) was used to assay motility of *C. difficile* strains, plates containing 35 ml media were inoculated with a single colony using a sterile toothpick and incubated for 3 days. Images were captured using a Canon 600D SLR camera. Minimum inhibitory concentration (MIC) assays were performed as described previously (Andrews, 2001).

General molecular biology techniques

Plasmids were extracted using a plasmid mini kit (Qiagen) and the genomic DNA with the DNeasy Blood and tissue kit (Qiagen) following treatment with lysozyme (10 mg ml⁻¹ in phosphate-buffered saline at 37°C for 30 min), then SDS (10% w/v) at 65°C for 30 min (Cartman and Minton, 2010) or Chelex extraction [cell pellets vortexed in 5% chelex (Sigma) boiled for 10 min, pelleted and the supernatants removed and used] or by phenol-chloroform purification as described previously (Cartman and Minton, 2010). DNA was amplified for cloning using Phusion high fidelity polymerase (NEB), and for screening using Go-taq polymerase (Promega), both in accordance with the manufacturers' instructions. DNA was extracted from PCR reactions and agarose gels using the QIAquick PCR and gel extraction kits (Qiagen) respectively. Allele exchange and complementation plasmids were constructed by restriction/ligation cloning using restriction endonucleases, Antarctic phosphatase and T4 ligase (NEB). Clostron plasmids were designed at <http://www.clostron.com> and synthesized and cloned into pMTL007C-E2 by DNA2.0 (Heap *et al.*, 2010).

Southern blot analysis was done using an intron specific probe. One microgram of genomic DNA was digested overnight with HindIII restriction enzyme (Promega). AlkPhosDirect™ Labelling and detection kit (GE Healthcare) and detection reagents, in accordance with the manufacturer's guidelines and visualized using CDP star (GE Healthcare).

Mutagenesis

C. difficile was mutated using the Clostron mutagenesis system as described previously (Heap *et al.*, 2007; 2010). Briefly, gene-specific re-targeted Clostron plasmids (Table 2) were transformed in to *C. difficile* by conjugation and transconjugants selected for with thiamphenicol, mutants were then positively selected with erythromycin and confirmed by PCR

and Southern blot. Double mutants were made in *C. difficile* by allele exchange using the method described previously (Faulds-Pain and Wren, 2013). Briefly, the plasmid pAFP91 (Faulds-Pain and Wren, 2013) was transformed in to the *C. difficile* 630 Δ *erm* Clostron mutants of CD0241, CD0242 and CD0244 by conjugation and transconjugants selected for with thiamphenicol, a series of replica plating on thiamphenicol allowed single crossover integrants to be isolated, double crossovers were then isolated by replica plating without selection and identified by their inability to grow on thiamphenicol. Mutant construction was verified by PCR.

Construction of complementation vectors

The *fliC* complementation vector contained the genes own promoter and terminator, the primers amplified from the end of the TAA stop sequence of the gene immediately upstream of the *fliC* and 196 bp downstream of the *fliC* stop site. The PCR product was cloned into the *C. difficile* complementation vector pMTL84151 (Heap *et al.*, 2009; Table S1 for primers and restriction sites). The CD0241 and CD0242 ORFs only were amplified and cloned into the complementation vector pMTL84153 (as the pMTL84151 vector but with an *fdx* promoter/RBS and terminator) at the NdeI site, immediately after the RBS in the vector and utilizes the ATG in its restriction sequence. The CD0244 ORF already contains an NdeI restriction site within its sequence therefore to utilize this restriction site as with the other two ORFs, the internal NdeI site was first removed by making a non-coding change in the sequence by SOE-PCR. All constructs were confirmed by restriction analysis and Sanger sequencing (SourceBioscience). In these three vectors expression of the complement genes are driven by the non-native constitutive promoter from the *fdx* gene of *Clostridium pasteurianum*.

Sedimentation growth curves

Sixty millilitres of BHIS broth was inoculated with a 1:100 dilution of an overnight culture, the inoculated broth was split into 5 ml aliquots which were each allowed to grow statically. At specific time points the top 1 ml of a 5 ml culture was carefully removed from one replicate, while the second replicate was mixed by vortexing and 1 ml of this mixed culture was removed, the OD₆₀₀ of both were measured. These cultures were then disposed of and the subsequent OD₆₀₀ reading taken from another pair of 5 ml cultures. Assays were repeated in triplicate. Statistical analysis was done in Graph-Pad Prism by two-way ANOVA and groups compared using a Tukey's multiple-comparisons test.

Autoagglutination assay

Strains of *C. difficile* grown overnight on BHIS agar were resuspended in PBS and normalized to an OD₆₀₀ of 10 in a volume of 5 ml. Following incubation for 16 h at 37°C in the anaerobic cabinet the top 1 ml of cells was removed and the OD₆₀₀ measured and the OD₆₀₀ of the whole solution measured. Autoagglutination was calculated as the difference between the OD₆₀₀ of the whole solution and the OD₆₀₀ of the top 1 ml as a percentage of the whole solution OD. Assays were repeated in triplicate.

Adherence to an abiotic surface

Overnight cultures of *C. difficile* were used to inoculate 2 ml of BHIS in high bind 24-well plates at a 1:100 dilution. The cultures were grown for 6 days after which the supernatant was carefully removed and the wells washed with PBS. 1% crystal violet was added to the wells and incubated at room temperature for 20 min, the wells were then washed twice with PBS and the remaining crystal violet was detached from the cells attached to the surface of the wells with methanol. The OD₅₉₅ was measured in a Spectrophotometer (Biotek, UK). Assays were repeated in triplicate.

Transmission electron microscopy

Cultures of *C. difficile* were inoculated 1:100 from overnight culture and allowed to grow statically for the 6 h. An equal volume of fixative (2.5% paraformaldehyde, 2.5% glutaraldehyde, 0.1 M Na cacodylate at pH 7.4) was added to the cultures. Fixed samples were diluted in MilliQ water at a 1:6 dilution and 10 μ l spotted on to a 400 mesh copper grid with a polyform support film and incubated for 1 min. Excess liquid was then removed by pipetting and 10 μ l of 0.3% phosphotungstic acid (PTA) added in order to stain the sample and incubated for 1 min. The excess PTA was drawn off with filter paper and the grid air-dried before examining on a Jeol JEM-1200EX II Transmission Electron Microscope fitted with a 2K side mounted AMT (Advanced Microscopy Techniques) CCD digital camera supplied by Debens UK Ltd (<http://www.debens.co.uk>), used to record the digital images.

Low-pH glycine extractions

Cells from 18 h overnight cultures of *C. difficile* strains were harvested, washed with phosphate buffered saline and resuspended in a 1:100 volume of low-pH glycine (0.2 M glycine-HCl, pH 2.2) and incubated at room temperature for 20 min with gentle shaking. The cells were removed by centrifugation at 4°C and the supernatant neutralized with the addition of 2M Tris to a pH of 7 to 8.

Purification of flagellar glycan for NMR analysis

Flagellar glycoprotein sample was digested with a large excess of proteinase K in 0.01 M TRIS-HCl buffer at pH 8 at 37°C for 48 h. The products of digestion or free oligosaccharides were separated on Bio-Gel P6 column (2.5 \times 60 cm) and each fraction which eluted before the salt peak was dried and analysed by ¹H NMR. Fractions containing sugars were separated by anion exchange chromatography on Hitrap Q column (5 ml size, Amersham) and the glycans eluted with a linear gradient of NaCl (0–1 M, 1 h). Desalting was performed on Sephadex G15 prior to analysis by NMR.

NMR spectroscopy analysis

NMR experiments were carried out on a Varian INOVA 500 MHz (¹H) spectrometer with 3 mm gradient probe at 25°C with acetone internal reference (2.225 ppm for ¹H and

31.45 ppm for ^{13}C) using standard pulse sequences DQCOSY, TOCSY (mixing time 120 ms), ROESY (mixing time 500 ms), HSQC and HMBC (100 ms long range transfer delay). AQ time was kept at 0.8–1 s for H-H correlations and 0.25 s for HSQC, 256 increments was acquired for t1. For ^1H - ^{31}P HMQC H-P coupling was set to 10 Hz.

Absolute configuration of N-methylthreonine

Glycopeptides were dephosphorylated with 48% HF (10 $\mu\text{l ml}^{-1}$, 30 min, 30°C), dried by air stream, (*R*)-2-octanol (0.2 ml) and acetyl chloride (0.02 ml) were added at room temperature, heated at 100°C for 2 h, dried by air stream, acetylated (0.2 ml Ac_2O –0.2 ml pyridine, 100°C, 30 min), dried, and analysed by GC-MS as described above. A standard was prepared from *N*-methyl-L-Thr (Sigma) by the same procedure without the dephosphorylation step with (*R*)- or (*RS*)-2-octanol. Analysis was performed on Agilent 6890 GC instrument with DB17 column at 160–280°C by 4°C min^{-1} .

In-gel digestion of flagellin proteins for mass spectrum analysis

Flagellin gel bands were excised and destained using 25% ethanol: 10% acetic acid. The gel bands were subsequently dehydrated with the addition of acetonitrile. Fully dehydrated gel bands were air dried under a laminar flow hood and then digested over night with 20–50 μl of 20 $\text{ng } \mu\text{l}^{-1}$ sequencing grade modified trypsin in 50 mM Ammonium bicarbonate. Digests were incubated at 37°C overnight. Peptides were extracted into fresh microfuge tubes and stored at –20°C.

Mass spectral identification and de novo sequencing of in-gel digested flagellins

Protein digests were analysed using a QTOF Ultima coupled to a nanoAcquity UPLC system. Briefly, 10 μl of each digested was injected onto a 180 $\mu\text{m ID} \times 20 \text{ mm}$, 5 μm symmetry C18 trap column in trapping mode, diverting flow through to waste. Peptides were eluted by reversed phase liquid chromatography (RPLC) to a 100 $\mu\text{m ID} \times 10 \text{ cm}$, 1.7 μm BEH130 C18 column (Waters) in analytical mode, using a linear gradient from 1% to 45% solvent B in 18 min, 45% to 85% solvent B for 2 min, 85% to 1% solvent B over 1 min, and hold for 8 min at 1% solvent B. Tandem mass spectrometry analyses were performed in data-dependent acquisition (DDA) mode. Peak-list files were generated and searched against the *C. difficile* 630 translated genome sequence, using MASCOT (Matrix Science) to identify unmodified peptides. The mass tolerance for precursor and fragment ions was 0.8 Da and an ion score of 30 or above indicated identity. In-house software 'Glycan Hunter' performed peak listing of MS/MS spectra of unmatched spectra that featured key glycan related ions, using information from previously published studies (Twine *et al.*, 2009). Glycopeptides were identified by manual inspection of the MS/MS data, and *de novo* sequencing of peptide related ions.

Western blot

The flagellin was isolated by low-pH glycine extractions in all cases. For the anti-FliC Western blots the low-pH glycine

extraction was carried out as described above. Samples were normalized according to the OD_{600} of the cultures and a total volume of 15 μl was run on a Nu-Page 12% Bis-Tris SDS-PAGE gel in MOPS running buffer (both Life Technologies). Proteins were transferred to an H + membrane in a semi-dry blotter in transfer buffer (0.24% Tris, 1.14% glycine and 20% Methanol). The membrane was blocked in PBS plus 2% milk (PBS-M) and probed with an anti-FliC antibody (a generous gift from the Armstrong lab) at a 1 in 10 000 dilution for 1 h at room temperature. Following standard membrane washing with PBS-T (PBS plus 0.1% Tween 20) a Li-cor Donkey anti-chicken IR Dye 680RD secondary antibody (Li-cor) was added at a 1: 5000 in PBS-M plus 0.1% Tween 20 and 0.01% SDS and incubated in the dark for 1 h. The membrane was washed as before and visualized using a Li-cor Odyssey.

For the anti-GlcNAc Western blots, low-pH glycine extraction was achieved by scraping overnight growth of *C. difficile* from plates and incubating the cells with low-pH glycine buffer. Samples were standardized according to the OD_{600} of the resuspended cells and protein separated on 12% Tris Glycine gels, and transferred to a PVDF membrane. The membrane was blocked with 5% milk-PBS-T then probed with 1 in 5000 dilution of anti- β -O-GlcNAc (Covance, Montreal, Canada) in PBS-T for 45 min at room temperature. After washing with PBS-T, reactivity was detected with anti-mouse IgM HRP conjugate (Sigma Aldrich, Oakville, Canada) secondary antibody at 1 in 10 000 dilution in PBS-T for 45 min at room temperature. Blots were imaged with ECL Prime Western blotting detection kit (GE Healthcare, Baie D'Urfe, Canada) according to manufacturer's guidelines, followed by exposure to X-ray film.

Ethics statement

All procedures were strictly conducted according to the requirements of the Animals (Scientific Procedures) Act 1986 approved by the Home Office, UK (project licence 60/4218).

Animal experiments

A total of 55 8-week-old C57BL/6 mice were housed in groups of 5/6 a week before dosing with 150 mg kg^{-1} clindamycin by oral gavage. Five days later animals were challenged with $\sim 1 \times 10^5$ spores/mouse *C. difficile* by oral gavage and mouse weight and body condition monitored throughout the study. Cages were changed weekly and the cabinet washed with perasafe after each group. To monitor *C. difficile* shedding faecal pellets from individuals were collected, serially diluted and plated on CCEY agar supplemented with cycloserine/cefoxitin, egg yolk emulsion and 15 $\mu\text{g ml}^{-1}$ lincomycin (for mutants only). At 28 days post challenge, once *C. difficile* shedding levels were below the limit of detection, mice were given a second dose of clindamycin (150 mg kg^{-1}) and shedding monitored for infection relapse. Results are expressed as mean \pm SE of at least 10 animals from two independent biological replicates. All statistical analyses were performed using the GraphPad InStat 3.10 (GraphPad InStat Software). A Mann-Whitney analysis of variance analysis (ANOVA) was used to determine significant difference in bacterial recoveries between all time points examined. *P*-values ≤ 0.05 were considered significant.

PCR was performed on colonies obtained from faecal shedding to determine the validity of the shedding strain. For the clostron mutants, gene-specific primers in combination with the universal EBS primer was used in PCR reactions, while for 630 Δ erm MLVA PCR analysis was used to confirm the identity of the shedding of this strain (Table S1). PCRs were done 1 day post challenge and weekly thereafter.

Acknowledgements

All authors have no conflict of interest to declare regarding commercial or other relationships. This work was supported by the Wellcome Trust and the Medical Research Council, UK. E.V. was supported by a Marie Curie Intra-European fellowship for career development (PIEF-GA-2009-252207-CDI). A.B. was supported by a Wellcome Trust grant 086418. We thank Kelly Fulton for preparation of flagellin digests for mass spectrometry analysis, Maria McCrossan at the LSHTM microscopy facility for the TEM work, Glen Armstrong for the provision of the FliC antibody and Peter Mullany for the provision of *C. difficile* 630 Δ erm.

References

- Andrews, J.M. (2001) Determination of minimum inhibitory concentrations. *J Antimicrob Chemother* **48** (Suppl. 1): 5–16.
- Asakura, H., Churin, Y., Bauer, B., Boettcher, J.P., Bartfeld, S., Hashii, N., et al. (2010) *Helicobacter pylori* HP0518 affects flagellin glycosylation to alter bacterial motility. *Mol Microbiol* **78**: 1130–1144.
- Aubry, A., Hussack, G., Chen, W., KuoLee, R., Twine, S.M., Fulton, K.M., et al. (2012) Modulation of toxin production by the flagellar regulon in *Clostridium difficile*. *Infect Immun* **80**: 3521–3532.
- Baban, S.T., Kuehne, S.A., Barketi-Klai, A., Cartman, S.T., Kelly, M.L., Hardie, K.R., et al. (2013) The role of flagella in *Clostridium difficile* pathogenesis: comparison between a non-epidemic and an epidemic strain. *PLoS ONE* **8**: e73026.
- Balonova, L., Mann, B.F., Cervený, L., Alley, W.R., Jr, Chovancova, E., Forslund, A.L., et al. (2012) Characterization of protein glycosylation in *Francisella tularensis* subsp. holarctica: identification of a novel glycosylated lipoprotein required for virulence. *Mol Cell Proteomics* **11** (M111): 015016.
- Cartman, S.T., and Minton, N.P. (2010) A mariner-based transposon system for in vivo random mutagenesis of *Clostridium difficile*. *Appl Environ Microbiol* **76**: 1103–1109.
- Chen, X., Katchar, K., Goldsmith, J.D., Nanthakumar, N., Cheknis, A., Gerding, D.N., and Kelly, C.P. (2008) A mouse model of *Clostridium difficile*-associated disease. *Gastroenterology* **135**: 1984–1992.
- Cobb, L.M., Mychaleckyj, J.C., Wozniak, D.J., and Lopez-Boado, Y.S. (2004) *Pseudomonas aeruginosa* flagellin and alginate elicit very distinct gene expression patterns in airway epithelial cells: implications for cystic fibrosis disease. *J Immunol* **173**: 5659–5670.
- Dawson, L.F., Valiente, E., Faulds-Pain, A., Donahue, E.H., and Wren, B.W. (2012) Characterisation of *Clostridium difficile* biofilm formation, a role for Spo0A. *PLoS ONE* **7**: e50527.
- Deakin, L.J., Clare, S., Fagan, R.P., Dawson, L.F., Pickard, D.J., West, M.R., et al. (2012) The *Clostridium difficile* spo0A gene is a persistence and transmission factor. *Infect Immun* **80**: 2704–2711.
- Dingle, T.C., Mulvey, G.L., and Armstrong, G.D. (2011) Mutagenic analysis of the *Clostridium difficile* flagellar proteins, FliC and FliD, and their contribution to virulence in hamsters. *Infect Immun* **79**: 4061–4067.
- Drudy, D., Fanning, S., and Kyne, L. (2007) Toxin A-negative, toxin B-positive *Clostridium difficile*. *Int J Infect Dis* **11**: 5–10.
- Eidhin, D.N., Ryan, A.W., Doyle, R.M., Walsh, J.B., and Kelleher, D. (2006) Sequence and phylogenetic analysis of the gene for surface layer protein, *slpA*, from 14 PCR ribotypes of *Clostridium difficile*. *J Med Microbiol* **55**: 69–83.
- Ewing, C.P., Andreishcheva, E., and Guerry, P. (2009) Functional characterization of flagellin glycosylation in *Campylobacter jejuni* 81–176. *J Bacteriol* **191**: 7086–7093.
- Faulds-Pain, A., and Wren, B.W. (2013) Improved bacterial mutagenesis by high-frequency allele exchange, demonstrated in *Clostridium difficile* and *Streptococcus suis*. *Appl Environ Microbiol* **79**: 4768–4771.
- Faulds-Pain, A., Birchall, C., Aldridge, C., Smith, W.D., Grimaldi, G., Nakamura, S., et al. (2011) Flagellin redundancy in *Caulobacter crescentus* and its implications for flagellar filament assembly. *J Bacteriol* **193**: 2695–2707.
- Goorhuis, A., Van der Kooij, T., Vaessen, N., Dekker, F.W., Van den Berg, R., Harmanus, C., et al. (2007) Spread and epidemiology of *Clostridium difficile* polymerase chain reaction ribotype 027/toxinotype III in The Netherlands. *Clin Infect Dis* **45**: 695–703.
- Grant, C.C., Konkel, M.E., Cieplak, W., Jr, and Tompkins, L.S. (1993) Role of flagella in adherence, internalization, and translocation of *Campylobacter jejuni* in nonpolarized and polarized epithelial cell cultures. *Infect Immun* **61**: 1764–1771.
- He, M., Sebahia, M., Lawley, T.D., Stabler, R.A., Dawson, L.F., Martin, M.J., et al. (2010) Evolutionary dynamics of *Clostridium difficile* over short and long time scales. *Proc Natl Acad Sci USA* **107**: 7527–7532.
- Heap, J.T., Pennington, O.J., Cartman, S.T., Carter, G.P., and Minton, N.P. (2007) The ClosTron: a universal gene knock-out system for the genus *Clostridium*. *J Microbiol Methods* **70**: 452–464.
- Heap, J.T., Pennington, O.J., Cartman, S.T., and Minton, N.P. (2009) A modular system for *Clostridium* shuttle plasmids. *J Microbiol Methods* **78**: 79–85.
- Heap, J.T., Kuehne, S.A., Ehsaan, M., Cartman, S.T., Cooksley, C.M., Scott, J.C., and Minton, N.P. (2010) The ClosTron: mutagenesis in *Clostridium* refined and streamlined. *J Microbiol Methods* **80**: 49–55.
- Hennequin, C., Janoir, C., Barc, M.C., Collignon, A., and Karjalainen, T. (2003) Identification and characterization of a fibronectin-binding protein from *Clostridium difficile*. *Microbiology* **149**: 2779–2787.
- Hitchen, P.G., Twigger, K., Valiente, E., Langdon, R.H., Wren, B.W., and Dell, A. (2010) Glycoproteomics: a powerful tool for characterizing the diverse glycoforms of bacterial pilins and flagellins. *Biochem Soc Trans* **38**: 1307–1313.

- Howard, S.L., Jagannathan, A., Soo, E.C., Hui, J.P., Aubry, A.J., Ahmed, I., *et al.* (2009) *Campylobacter jejuni* glycosylation island important in cell charge, legionaminic acid biosynthesis, and colonization of chickens. *Infect Immun* **77**: 2544–2556.
- Hussain, H.A., Roberts, A.P., and Mullany, P. (2005) Generation of an erythromycin-sensitive derivative of *Clostridium difficile* strain 630 (630Deltaerm) and demonstration that the conjugative transposon Tn916DeltaE enters the genome of this strain at multiple sites. *J Med Microbiol* **54**: 137–141.
- Iwashkiw, J.A., Seper, A., Weber, B.S., Scott, N.E., Vinogradov, E., Stratilo, C., *et al.* (2012) Identification of a general O-linked protein glycosylation system in *Acinetobacter baumannii* and its role in virulence and biofilm formation. *PLoS Pathog* **8**: e1002758.
- Kirby, J.M., Ahern, H., Roberts, A.K., Kumar, V., Freeman, Z., Acharya, K.R., and Shone, C.C. (2009) Cwp84, a surface-associated cysteine protease, plays a role in the maturation of the surface layer of *Clostridium difficile*. *J Biol Chem* **284**: 34666–34673.
- Kuehne, S.A., Cartman, S.T., Heap, J.T., Kelly, M.L., Cockayne, A., and Minton, N.P. (2010) The role of toxin A and toxin B in *Clostridium difficile* infection. *Nature* **467**: 711–713.
- Kuijper, E.J., van Dissel, J.T., and Wilcox, M.H. (2007) *Clostridium difficile*: changing epidemiology and new treatment options. *Curr Opin Infect Dis* **20**: 376–383.
- Lawley, T.D., Clare, S., Walker, A.W., Goulding, D., Stabler, R.A., Croucher, N., *et al.* (2009) Antibiotic treatment of *Clostridium difficile* carrier mice triggers a supershedder state, spore-mediated transmission, and severe disease in immunocompromised hosts. *Infect Immun* **77**: 3661–3669.
- Lawley, T.D., Clare, S., Deakin, L.J., Goulding, D., Yen, J.L., Raisen, C., *et al.* (2010) Use of purified *Clostridium difficile* spores to facilitate evaluation of health care disinfection regimens. *Appl Environ Microbiol* **76**: 6895–6900.
- Lithgow, K.V., Scott, N.E., Iwashkiw, J.A., Thomson, E.L., Foster, L.J., Feldman, M.F., and Dennis, J.J. (2014) A general protein O-glycosylation system within the *Burkholderia cepacia* complex is involved in motility and virulence. *Mol Microbiol* **92**: 116–137.
- Liu, S.L., Ezaki, T., Miura, H., Matsui, K., and Yabuuchi, E. (1988) Intact motility as a *Salmonella typhi* invasion-related factor. *Infect Immun* **56**: 1967–1973.
- Logan, S.M. (2006) Flagellar glycosylation – a new component of the motility repertoire? *Microbiology* **152**: 1249–1262.
- Loo, V.G., Poirier, L., Miller, M.A., Oughton, M., Libman, M.D., Michaud, S., *et al.* (2005) A predominantly clonal multi-institutional outbreak of *Clostridium difficile*-associated diarrhea with high morbidity and mortality. *N Engl J Med* **353**: 2442–2449.
- Lyras, D., O'Connor, J.R., Howarth, P.M., Sambol, S.P., Carter, G.P., Phumoonna, T., *et al.* (2009) Toxin B is essential for virulence of *Clostridium difficile*. *Nature* **458**: 1176–1179.
- Osman, C., Haag, M., Wieland, F.T., Brugger, B., and Langer, T. (2010) A mitochondrial phosphatase required for cardiolipin biosynthesis: the PGP phosphatase Gep4. *EMBO J* **29**: 1976–1987.
- Parker, J.L., Day-Williams, M.J., Tomas, J.M., Stafford, G.P., and Shaw, J.G. (2012) Identification of a putative glycosyltransferase responsible for the transfer of pseudaminic acid onto the polar flagellin of *Aeromonas caviae* Sch3N. *MicrobiologyOpen* **1**: 149–160.
- Pizarro-Cerda, J., and Cossart, P. (2006) Bacterial adhesion and entry into host cells. *Cell* **124**: 715–727.
- Reynolds, C.B., Emerson, J.E., de la Riva, L., Fagan, R.P., and Fairweather, N.F. (2011) The *Clostridium difficile* cell wall protein CwpV is antigenically variable between strains, but exhibits conserved aggregation-promoting function. *PLoS Pathog* **7**: e1002024.
- Schirm, M., Arora, S.K., Verma, A., Vinogradov, E., Thibault, P., Ramphal, R., and Logan, S.M. (2004) Structural and genetic characterization of glycosylation of type A flagellin in *Pseudomonas aeruginosa*. *J Bacteriol* **186**: 2523–2531.
- Smith, C.J., Markowitz, S.M., and Macrina, F.L. (1981) Transferable tetracycline resistance in *Clostridium difficile*. *Antimicrob Agents Chemother* **19**: 997–1003.
- Stabler, R.A., He, M., Dawson, L., Martin, M., Valiente, E., Corton, C., *et al.* (2009) Comparative genome and phenotypic analysis of *Clostridium difficile* 027 strains provides insight into the evolution of a hypervirulent bacterium. *Genome Biol* **10**: R102.
- Stabler, R.A., Dawson, L.F., Valiente, E., Cairns, M.D., Martin, M.J., Donahue, E.H., *et al.* (2012) Macro and micro diversity of *Clostridium difficile* isolates from diverse sources and geographical locations. *PLoS ONE* **7**: e31559.
- Sun, L., Jin, M., Ding, W., Yuan, J., Kelly, J., and Gao, H. (2013) Posttranslational modification of flagellin FlaB in *Shewanella oneidensis*. *J Bacteriol* **195**: 2550–2561.
- Twine, S.M., Reid, C.W., Aubry, A., McMullin, D.R., Fulton, K.M., Austin, J., and Logan, S.M. (2009) Motility and flagellar glycosylation in *Clostridium difficile*. *J Bacteriol* **191**: 7050–7062.
- Verma, A., Schirm, M., Arora, S.K., Thibault, P., Logan, S.M., and Ramphal, R. (2006) Glycosylation of b-Type flagellin of *Pseudomonas aeruginosa*: structural and genetic basis. *J Bacteriol* **188**: 4395–4403.
- Voth, D.E., and Ballard, J.D. (2005) *Clostridium difficile* toxins: mechanism of action and role in disease. *Clin Microbiol Rev* **18**: 247–263.
- Williams, D.R., Young, D.I., and Young, M. (1990) Conjugative plasmid transfer from *Escherichia coli* to *Clostridium acetobutylicum*. *J Gen Microbiol* **136**: 819–826.

Supporting information

Additional supporting information may be found in the online version of this article at the publisher's web-site.